

# **YORK AND NORTH YORKSHIRE PARTNERSHIP EXECUTIVE**

**19 FEBRUARY 2009**

## **GEOGRAPHIC PROGRAMME - UPDATE**

### **1. Purpose of the Report**

1.1 The purpose of this report is to update the Partnership Executive on progress on the development of the Geographic Programmes for York and North Yorkshire

### **2. Background**

2.1 Since our last report in October 2008 work has continued on the development of the Geographic Programmes for York and North Yorkshire.

### **3.0 Context**

3.1 In our note to local authority Chief Executives of 2 February 2009 Yorkshire Forward set out the context in which Geographic Programmes were considered by our Board.

3.2 The development of Geographic Programmes across the region has taken place against the background of a deepening economic downturn and a significant reduction in Yorkshire Forwards budgets. In developing Geographic Programmes, Yorkshire Forward recognises that we need to respond to the current downturn and that this will require flexibility in the delivery and funding of Geographic Programmes in order that we can respond to economic issues as they arise.

### **4. Progress to Date – North Yorkshire**

4.1 Meetings have been held with all districts to agree their priorities for the Geographic Programme. The starting points for all discussions were the outcomes of the 2007 SRIP Review which set out the priority areas, both thematic and geographic for the sub-region.

4.2 Discussions have focussed primarily on future investments in the sub-regions market towns, especially which priority market towns will continue to receive support from the main market towns programme and which move into a transition phase out of RMT programme over the next three years. Partner authorities have suggested the following designation for towns in their areas.

#### **Priority Towns**

Catterick /Richmond  
Northallerton  
Skipton  
Malton &Norton  
Whitby  
Knaresborough

#### **Transitional Towns**

Helmsley  
Kirkbymoorside  
Bedale  
Boroughbridge  
Pickering  
Settle

4.3 Further investment in the sub-regions market towns will be delivered through the Rural Enterprise Capitals programme. Work is currently underway to build on the study undertaken by consultants King Sturge ([http://www.rmtportal.com/asset\\_store/document/081030\\_rural\\_business\\_space\\_final\\_report\\_1633\\_14.doc](http://www.rmtportal.com/asset_store/document/081030_rural_business_space_final_report_1633_14.doc)) to identify potential sites for workspace development.

4.4 The issue of the future of the current renaissance delivery teams was also discussed at these meetings. Yorkshire Forward has already agreed to extend the current contracts to March 2010, whilst partners reach agreement on how delivery is supported in the future.

4.5 Yorkshire Forward remain open minded about support to local delivery. However financial assistance for delivery teams will only be made available where there is a clear YF supported capital programme. We also believe that some additional support at the sub-regional level may be required to reduce the need for additional ad-hoc consultant support to assist delivery teams.

4.6 Discussions have also taken place with Scarborough BC and Selby DC on priorities for their urban renaissance programmes.

4.7 North Yorkshire partners met with Yorkshire Forward Executive Directors in December 2008 to discuss priorities for the sub-region. A follow up meeting with Directors will take place in March.

## **5. Financial Position**

5.1 At its meeting in January, Yorkshire Forwards Board agreed forecast spend of **£118m** into the North Yorkshire Geographic Programme. This total figure represents a figure of around **£35m** forecast for local projects and a share of about **£84m**, which the sub-region can expect to receive from regional projects. Final figures will be agreed at the board meeting in March following a period of consultation with the Assembly and LGYH about the overall balance of spend across regional and policy areas.

5.2 The financial profile for the Geographic Programme will be available in due course. But in any case funding for new projects in 2009/10 will be limited as several existing SRIP projects in the sub-region have still to be completed. Given this, there will be no pressure to have agreed projects ready to start in April.

## **6. Process Issues**

6.1 Over the months since the last report, it has been clear from the government's response to the SNR that accountability for RDA funds will remain with RDA's and that there will not be a formal delegation of funding to local partners,. Given this, we will not now be developing Accountable Body agreements with any Geographic Programme partners.

6.2 Whilst there will be no formal accountable body role for the Geographic Programme Yorkshire Forward wish to develop with the Partnership Executive an enhanced way of working and decision making, which will build on the partnership working and co-operation that was developed through the SRIP process.

6.3 We are proposing that the for management of the Geographic Programme the Partnership Executive take greater responsibility for both decision making, on which projects and activities are recommended for support and in monitoring the performance of both local and regional projects in the sub-region. The attached flow chart sets out our initial thoughts on the role the Partnership Executive could play in decision making on GP projects.

6.4 Our proposal is that the Partnership Executive takes on a more active role in the endorsement of projects before they are submitted for appraisal through Yorkshire Forward's Performance Management Framework (PMF) appraisal system. Previously, under SRIP, the Partnership Executive had no had a formal role in approving projects submitted by partners. This proposal is major change in how projects seeking Geographic Programme funding are endorsed.

6.5 The Partnership Executive would need to reach their own conclusions on how they see this pre-appraisal role being undertaken. If adopted, Yorkshire Forward would welcome early discussions on the process to ensure compatibility with PMF.

6.6 From the summer, Yorkshire Forward will be inviting partners to take part in all aspects of our PMF process. Details of this are still being worked through and further information will be shared with partners when it is known. The Partnership Executive, through representation at the

City Region, will also be asked to take on a greater role in the review of significant regional contracts such as that with Business Link Yorkshire and the Yorkshire Tourist Board. Details of how this will work will be developed over the coming months.

6.7 Post project approval, we are advocating an increased role for the Partnership Executive in the monitoring of Geographic Programme performance. For local projects, this would involve some analysis of projects spend and output performance and where performance is felt to be unsatisfactory recommending to Yorkshire Forward changes to projects or programmes.

6.8 For regional projects delivering in North Yorkshire, the Partnership Executive may wish to take on a more active role in ensuring that these regional projects are delivering on the priorities identified in the SRIP review 2007. As with the appraisal process, if agreed by the Partnership Executive Yorkshire Forward would welcome early discussions on how this process might work.

6.9 Contracting arrangements are still under discussion, but we do anticipate some of the Yorkshire Forward funding to North Yorkshire will be allocated to the delivery of county-wide programmes. Further discussions will take place with partners about the most appropriate arrangements for delivering these programmes.

6.10 Yorkshire Forward will also be making an increased contribution to the York and North Yorkshire Partnership Unit as way of recognising the increased role they will play in the management of the Geographic Programme and in developing the evidence base for the Integrated Regional Strategy.

6.11 Regular reviews of the project approval process will need be held to ensure that projects are moving through the system and that both Yorkshire Forward and sub-regional partners are on course to meet spend targets.

## **7. Progress to Date - York**

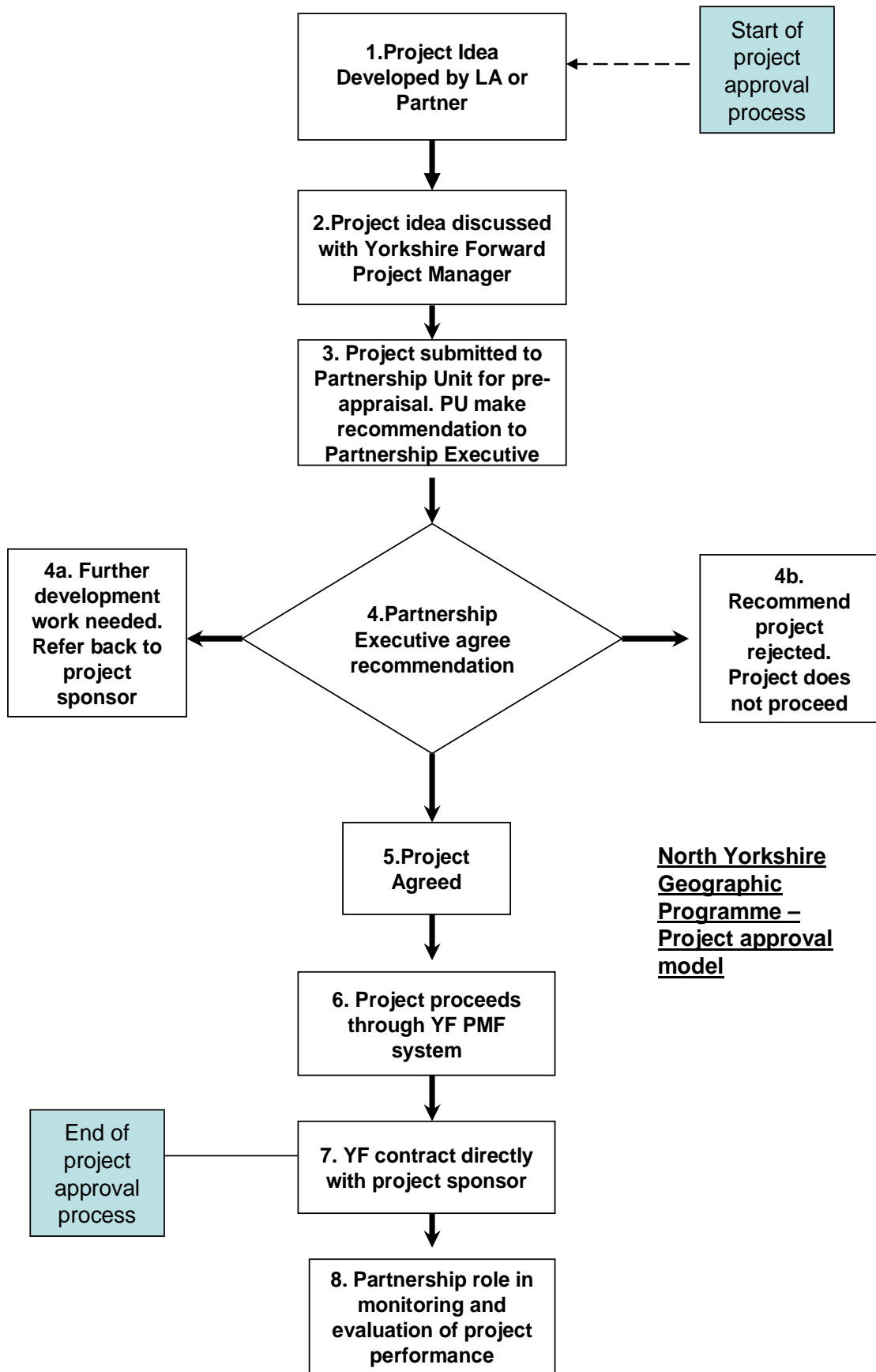
7.1 Meetings continue to be held with City of York Council on the content of their Geographic Programme. Yorkshire Forwards Board has agreed forecast spend of circa £54m into the city. £28m of this will be available for local projects with the balance of approx. £26m being invested in York through regional projects

7.2 Yorkshire Forward is also working with City of York Council to look at capacity issues for major capital projects.

## **8.0 Recommendation**

8.1 Members of the Partnership Executive are asked to note the content of this report and to for their views on the draft project approval model attached.

**Julie Hutton**  
**Assistant Director – York and North Yorkshire**



## **Notes on flowchart**

1. Project ideas are generated and developed by Local Authorities and other partners
2. Once a project idea has been developed, that will seek Yorkshire Forward funding, there will need to be an early discussion with the relevant Yorkshire Forward project manager to ensure the project fits with Policy Products and that Yorkshire Forward are prepared to consider it for funding.
3. When a project has received in-principle support from Yorkshire Forward it should be submitted to the Partnership Unit for a pre-appraisal. This pre-appraisal would be to consider the projects fit with sub-regional priorities and to assess the likely contribution the project would make to the sub-regions economy and output and outcome targets. The Partnership Unit would make a recommendation to the North Yorkshire Partnership Executive based on three options – Agree project; Refer the project back for further work or rejection.
4. The Partnership Executive would consider the project and the recommendation from the Partnership Unit and decide how they wish to proceed with the project
  - a. If further work is required then the project would be sent back to the developer with a clear indication of where it needed further development. The revised project would then be submitted back to the Partnership Unit to ensure the issues had been addressed
  - b. If a project is rejected it would not be considered for Yorkshire Forward funding support. The Partnership Unit would need to guide project sponsors as to whether the project could be revised and resubmitted.
5. If a project is agreed it would need to be developed into a full Outline Business Plan ready for submission through Yorkshire Forwards Performance Management Framework (PMF)
6. Once submitted into the PMF process the project would proceed through its approval stages supported by the Yorkshire Forward project manager.
7. Once approved through the PMF process Yorkshire Forward would issue a Single Programme contract directly with the project sponsor/deliverer.
8. The role the Partnership Executive take in monitoring and evaluation of both projects and the performance of the Geographic Programme overall will be subject to further discussion with Yorkshire Forward.