

Progress in York and North Yorkshire

Light Touch Review

March 2010



York and North Yorkshire
Partnership Unit



data & intelligence partnership

yorkshirefutures

CONTENTS

1.	INTRODUCTION.....	3
2.	THE IMPACT OF THE ECONOMIC DOWNTURN.....	5
3.	OVERALL PROGRESS.....	7
4.	THE YORK AND NORTH YORKSHIRE SUB REGION.....	11
5.	ECONOMY	14
6.	QUALITY OF LIFE.....	15
7.	ENVIRONMENT	16
8.	INFRASTRUCTURE	17
9.	EDUCATION AND SKILLS	18
10.	GOVERNANCE AND CIVIC PARTICIPATION.....	19
11.	TECHNICAL APPENDIX.....	20

1. INTRODUCTION

Purpose of the Report

This report provides a light touch update of Progress in York and North Yorkshire produced in March 2009 and focuses on the performance of the sub region measured against a series of key indicators. This work continues to be funded by Yorkshire Futures and managed by the York and North Yorkshire Partnership Unit on behalf of the York and North Yorkshire Data and Intelligence Partnership (YNYDIP).

The York and North Yorkshire Partnership Unit is also undertaking an initial Economic Assessment for the sub region, prior to the preparation of a statutory Economic Assessment for North Yorkshire and providing support for City of York Council. More comprehensive analysis of the indicators contained in this report is included within the technical assessment and will be available in the spring of 2010.

This report is one of a suite of 'Progress' reports available across the region. An overall 'Progress' is produced for the Yorkshire and Humber region, one for the functional sub region of York and North Yorkshire and one for each of the city regions of Leeds, Sheffield, and Hull and Humber Ports.

Progress in the Region includes comprehensive data and information about the Yorkshire and Humberside region, setting out a broad picture and conclusions which are useful for informing key policy areas. The regional report monitors a series of headline and high level indicators. The headline indicators measure the following:

- ◆ Quality of Life (Quality of Life Index);
- ◆ Economy
 - Part a) Total Gross Value Added (GVA)
 - Part b) Regional Index of Sustainable Economic Well Being (R-ISEW);
- ◆ Climate Change (carbon dioxide emissions).

A list of the high level indicators can be found in the overall summary chapter.

Much of the data included in the regional and sub / city regional reports can also be downloaded from the 'Progress in the Region Live' and forthcoming 'Progress in York and North Yorkshire Live' functions via the Yorkshire Futures website (www.yorkshirefutures.com). Progress in the Region Live is an interactive mapping tool that allows the user to see how places are performing against a series of indicators with national comparator data also provided. Proxy indicators are provided where data is not available at a sub regional level.

Structure of the Report




Following a section exploring the impact of the economic downturn on York and North Yorkshire and an introduction to the demography of the sub region, the report is divided into six main sections, namely:

- ◆ Economy;
- ◆ Quality of Life;
- ◆ Environment;
- ◆ Infrastructure;
- ◆ Education and Skills;
- ◆ Governance and Civic Participation.

Each section includes an 'at a glance' data table outlining the progress of the sub region against regional and national performance for the related headline and high level indicators. A technical appendix is included to detail the definition, source and highlight any technical issues for each indicator.

Measuring Progress

Where available each indicator is measured against a baseline year (1998, or the earliest year possible otherwise). The most recent available data (as of January 2010) is presented with an assessment of whether the sub region has improved since the baseline year. For some indicators there is no baseline, for example where an indicator has recently been introduced. The following symbols are used to indicate the progress made and are as follows:

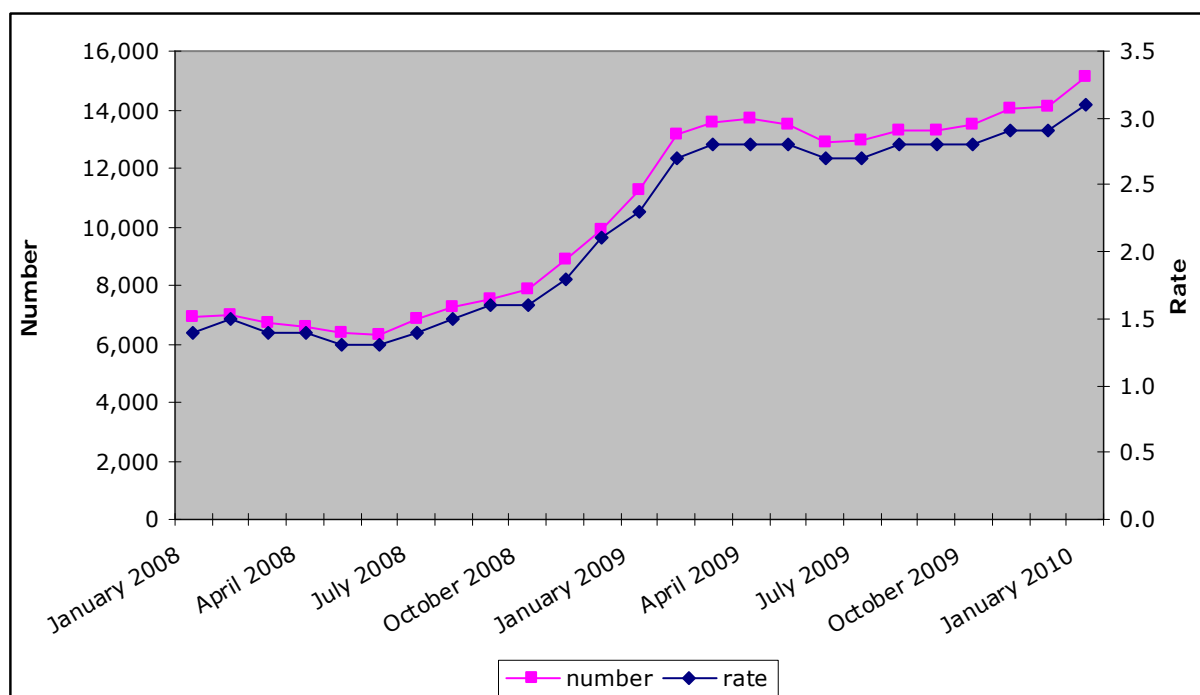
	A notable improvement has been observed
	A notable deterioration has been observed
	Data shows little or no change
No Trend	No time series data is available to measure change
n/a	Data is not available

2. THE IMPACT OF THE ECONOMIC DOWNTURN

In order to monitor the impact of the economic downturn on the economy of York and North Yorkshire, the Partnership Unit established a monthly economic bulletin to be circulated to partners across the sub region in April of 2009. The bulletin monitors key national indicators, labour and housing markets including planning applications and key trends emerging from the voluntary sector.

The following chart indicates both the count and rate of Job Seekers Allowance (JSA) claimants in York and North Yorkshire. Whilst the volume of claimants in the sub region has more than doubled since January 2008, the rate of increase has started to slow over the last 12 months. Although the sub region has seen a significant increase claimant count rate, it remains below regional and national averages.

Figure 1: Volume and Rate of JSA Claimants, York and North Yorkshire January 2008 – January 2010



Source: Office for National Statistics, Nomis

There is concern that the volume of long term claimants continues to increase. Figures show that the numbers of people claiming for six and twelve months have both more than doubled over the last year. Likewise, the number of 18 – 24 year olds claiming job seekers allowance has also more than doubled and at a rate much greater than seen regionally and nationally. The difficult labour market conditions are further compounded by falling numbers of job vacancies; there are now 4.40 claimants for every vacancy¹.

¹ Number of live unfilled vacancies versus total claimants:- Office for National Statistics, Nomis

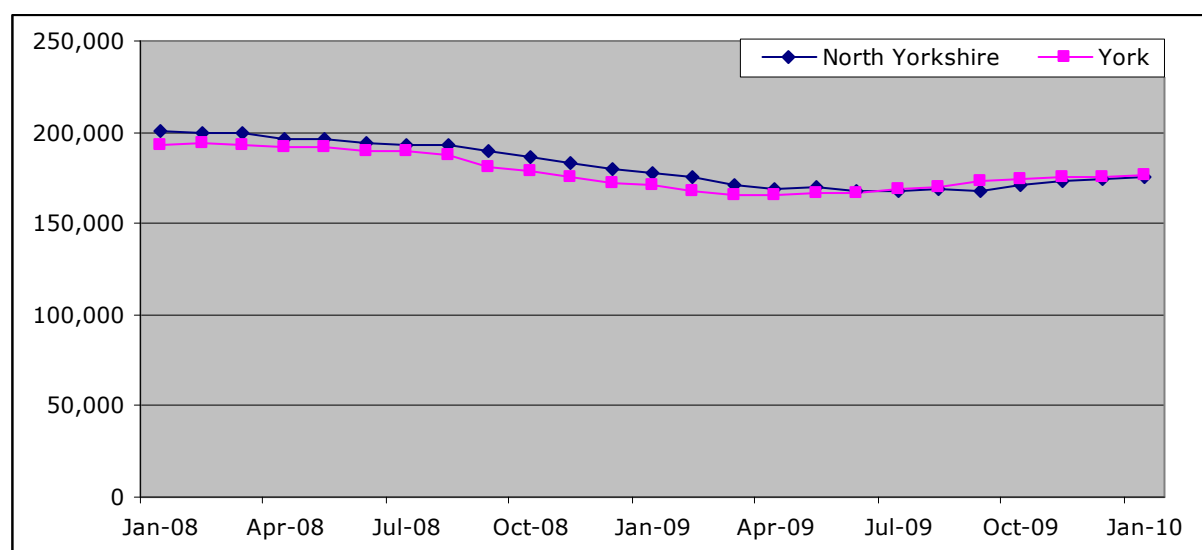
Table 1: Job Seekers Allowance Claimants, York and North Yorkshire

	January 2008	January 2009	January 2010
Total Number Claimants	6,892	11,269	15,100
Claimant Count Rate	1.4	2.3	3.1
Number 18-24 yr olds	1,840	3,125	4,270
Number Claiming 6 months	1,625	1,960	4,515
Number Claiming 12 months	720	650	1,835
Claimant to Vacancy ratio	1.47	4.93	4.40

Source: Office for National Statistics, Nomis

The housing market has also been affected by the recession. The average house price in North Yorkshire is currently £175,967, which is 12 per cent lower than in January 2008, and £176,701 in York, down by 8 per cent since January 2008. House prices are now starting to recover in both areas.

Figure 2: Land Registry, Average House Prices, January 2008 - January 2010



Source: Land Registry

The above analysis above shows a snapshot of some of the changes that have occurred in the sub region during the recession. It highlights the significant change that has happened within the past two years which has yet to be picked up by many of the datasets used to measure the indicators set out in this report.

3. OVERALL PROGRESS

Between 1998 and 2007 the York and North Yorkshire economy grew by over half to reach £13.5 billion and at a faster growth rate than seen regionally or nationally. The economic downturn is however too recent to fully impact on the indicators used and how it affects long term progress will not be apparent until trends are clearer.

The potential impact of the downturn has not yet emerged in the other economic indicators, for example the working age employment rate increased to 80 per cent and median weekly wages also increased. There is some concern that despite an increase in the levels of business stock² at the start of 2008, the new business registration rate³ had fallen. This suggests that whilst overall the number of businesses continues to increase, the rate of creation is falling. It is not clear if this trend, which is also apparent both regionally and nationally, is due to the difficult credit conditions of the economic downturn.

The quality of life of residents in York and North Yorkshire has for the most part improved. Both male and female life expectancy has increased and remains higher than both regional and national averages. Levels of crime continue to fall and remain substantially below regional and national averages. Levels of participation are also higher for both sport and active recreation and culture.

The sub region has improved against all the environmental indicators for which data is available. Climate change and the awareness that globally we need to reduce carbon emissions is a key national priority. Data shows that whilst CO₂ emissions are still high in comparison to the national average, they have fallen. Although changes to the methodology mean that the 2006 ecological footprint cannot be directly compared to that of 2004, the amount of resources that the sub region consumes above that which is available to us has dropped. The ecological footprint of the sub region, at 4.87 global hectares per capita, does however remain higher than the regional and national figures.

The sub region has not however performed as well against the indicators for infrastructure. Road traffic continues to increase, with a 13.4 per cent rise in the number of kilometres travelled per year which may be caused by the reliance on private transport common to many rural areas. There is also little change to the percentage of journeys being made by non private forms of transport.

² Per 10,000 adult population

³ which measures the number of new VAT and PAYE businesses registered in a year by the adult population

The impact of the economic downturn on the housing market is starting to become apparent. Although housing affordability continues to be a problem, with house prices at just under nine times the average income⁴, the ratio declined for the first time since the baseline year, as a result of lower house prices. The number of houses being built has also declined, with completions four per cent lower in 2008/09 than in the previous year.

Educational attainment levels continue to improve and the sub region also compares favourably against both the regional and national averages for all the education related indicators. Almost a third of the working age population are now educated to at least NVQ Level 4. Although the levels of workforce training have increased in the last year there is some concern that they remain lower than in 2001.

The following table outlines the progress of York and North Yorkshire against the headline indicators. Total Gross Value Added and CO2 emissions have both improved.

Table 2: Summary of Progress against Headline Indicators by Key Policy Area

Quality of Life	H1	Quality of Life Index	n/a
Economy	H2a	Total Gross Value Added (GVA)	😊
	H2b	Regional Index of Sustainable Economic Wellbeing (R-ISEW)	n/a
Climate Change	H3	Per capita carbon dioxide emissions	😊

Of the 35 high level indicators, progress can be measured against 22, the results of which are indicated below. York and North Yorkshire is improving in 16 of the indicators, saw no real change in 2 (1 of which remains at 100%) and has declined on the earliest available data in only 4 indicators.

Table 3: Summary of Progress by Chapter

	😊	😐	😞	No Trend	n/a
Economy (6)	3	-	-	-	3
Quality of life (8)	4	-	1	1	2
Environment (7)	3	1	-	1	2
Infrastructure (6)	1	1	2	1	1
Education and skills (6)	5	-	1	-	-
Governance and Civic Participation (2)	-	-	-	1	1
Total (35)	16	2	4	4	9

⁴ Lower quartiles

The following table summarises performance against each individual high level Indicator.

Table 4: Summary of Progress against High Level Indicator by Key Policy Area

Productivity and Innovation	HL1	GVA per hour worked (Index)	n/a
	HL2	Business R&D investment as a % of GVA	n/a
	HL3	Investment by UK firms as a % of total GVA	n/a
Enterprise	HL4	Start of year VAT registered businesses per 10,000 population	😊
Employment and Incomes	HL5	Working age ILO employment rate	😊
	HL6	Median weekly pay	😊
Health and Well Being	HL7	Average life expectancy at birth	😊
	HL8	Obesity prevalence amongst those aged 16+	n/a
Crime and Safety	HL9	Total recorded crime, all types, per 1,000 population	😊
	HL10	Total recorded violent crime against the person per 1,000 population	😊
Culture	HL11	% of adults doing regular sport and active recreation	😊
	HL12	% of the population having done cultural activity (arts, museums, libraries, etc) in the past 12 months	No Trend
Diversity and Equalities	HL13	% of areas in the most deprived 10% nationally	😞
	HL14	% of workless households	n/a
Climate Change and Energy	HL15	Ecological footprint	No Trend
	HL16	Renewably generated electricity as a % of total electricity consumed	n/a
Waste and Resources	HL17	% of total municipal waste sent to landfill	😊
Biodiversity	HL18	% of Sites of Special Scientific Interest (SSSIs) in favourable or recovering condition	😊
Quality of Local Environments	HL19	% of Local Areas in the poorest air quality quintile	😊
	HL20	% river length classified as fair or better (biological)	😊
	HL21	Regional Quality of Place index (urban renaissance)	n/a
Transport	HL22	Total vehicle traffic (car + taxi)	😞
	HL23	% of journeys to work not by car/motorbike/taxi	😐
Housing	HL24	House prices to earnings ratio	😞
	HL25	Number of new homes completed	n/a
Planning and Land	HL26	% of new homes on previously developed land	😊
	HL27	% of properties at significant or moderate risk of flooding	No Trend

Education and Skills	HL28	% of 16 yr olds with 5 GCSEs at A*-C including English and Maths	😊
	HL29	% of working age population without qualifications	😊
	HL30	% of working age population with NVQ Level 2+	😊
	HL31	% of working age population with NVQ Level 3+	😊
	HL32	% of working age population with NVQ Level 4+	😊
	HL33	% of employees receiving job related training in the past 13 weeks	☹️
Communities and Participation	HL34	% of local authorities rated as good or excellent	No Trend
	HL35	% of population involved in 'civic affairs'	n/a

A comparison to the region can be assessed in 21 of the 35 high level indicators. Of the 21, York and North Yorkshire compares favourably in 16 and is lower or worse than the region in only 1.

Table 5: Comparison of Performance against High Level Indicators with the Region

	Higher or better than region	No notable difference to region	Lower or worse than region	Comparison not available
Economy (6)	2	1	-	3
Quality of life (8)	5	-	-	3
Environment (7)	3	1	1	2
Infrastructure (6)	-	2	-	4
Education and Skills (6)	6	-	-	-
Governance and Civic Participation (2)	-	-	-	2
Total	16	4	1	14

4. THE YORK AND NORTH YORKSHIRE SUB REGION

York and North Yorkshire is one of four functional sub / city regions across Yorkshire and the Humber; the others being Hull and Humber Ports City Region, Leeds City Region and Sheffield City Region. Within York and North Yorkshire there are seven district authorities and the Unitary Authority of York. York, Craven, Harrogate and Selby are also part of Leeds City Region.

Figure 3: Map of York and North Yorkshire



Source: York and North Yorkshire Partnership Unit

According to ONS estimates, between 2001 and 2008 the population of York and North Yorkshire increased by 5.8 per cent to reach approximately 794,700. Although the area of York and North Yorkshire is over half of the physical area of the region, only 15.2 per cent of the region's population live in the sub region. This is reflected in the considerably lower population density compared to the national and regional averages. As Table 1 demonstrates however, this varies significantly at local authority level. The population of Richmondshire has increased the most since 2001, though it is not certain how the Ministry Of Defence presence in Catterick affects this, and in Scarborough the least. York has by far the highest population density at 718 persons per square kilometre, which is more than 7 times the sub regional average. In contrast, the more rural areas of Ryedale and Richmondshire have much smaller population densities of 36 and 39 respectively.

Table 6: Population Change and Density by Local Authority, 2001-2008

	Number (000's)	% Δ since 2001	% of regional population	Area (sq km)	Population Density (people per sq km)
England	51,446.2	4.0	-	130,281	395
Yorkshire and Humber	5,213.2	4.8	-	15,408	338
York and North Yorkshire	794.7	5.8	15.2	8,310	96
North Yorkshire	599.2	5.1	11.5	8,038	75
York	195.4	7.8	3.7	272	718
Craven	56.2	4.7	1.1	1,177	48
Hambleton	87.1	3.4	1.7	1,311	66
Harrogate	160.5	5.9	3.1	1,308	123
Richmondshire	51.5	9.3	1.0	1,319	39
Ryedale	53.5	5.1	1.0	1,507	36
Scarborough	108.5	2.2	2.1	817	133
Selby	82.0	7.0	1.6	599	137

Source: Office for National Statistics, Mid-Year Population Estimates 2001, 2008

The population of York and North Yorkshire is also increasing at a faster rate than is seen regionally or nationally, although it would appear this is due to in migration rather than natural change. Birth and death data indicates that the number of children has decreased in all local authorities across the sub region (except for Richmondshire, where it remains unchanged). The sub regional rate of decline in the ratio of births to deaths is also greater than both the national and regional averages.

Table 7: Percentage change of population by broad Age Band and Local Authority, 2001 to 2008

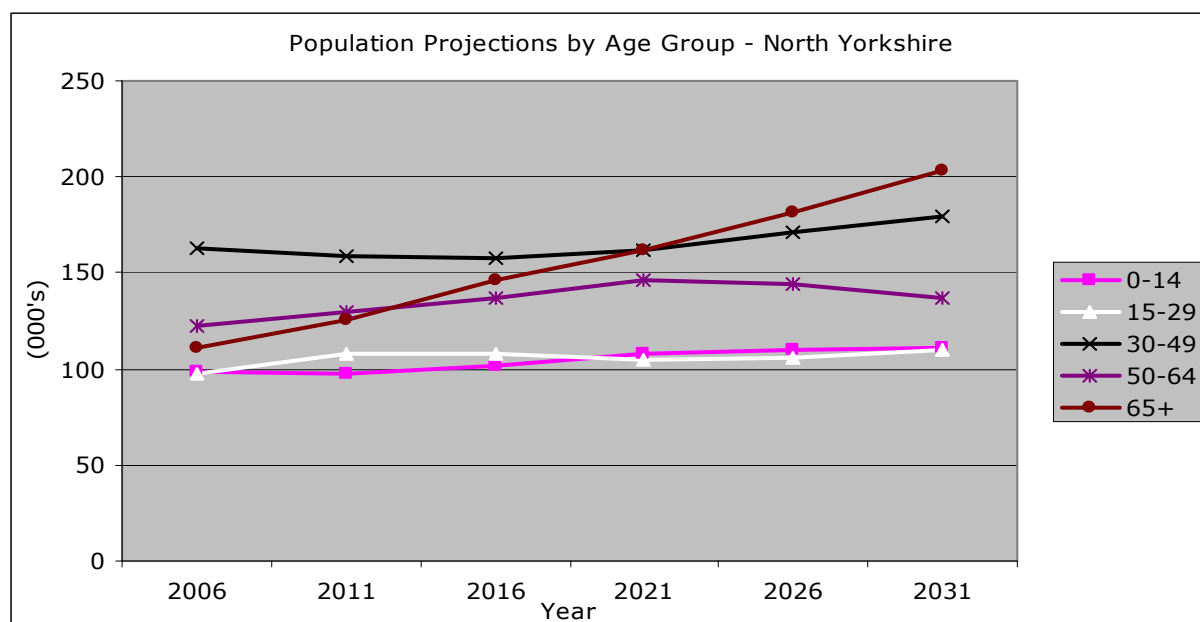
	Total % Δ	0-15	15-29	30-49	50-64	65+
England	4.0	-2.7	10.2	1.5	7.3	5.7
Yorkshire and Humber	4.8	-4.6	18.9	-0.1	7.5	4.9
York and North Yorkshire	5.7	-4.8	18.6	-0.3	8.9	10.1
North Yorkshire	5.1	-4.8	14.2	-0.9	9.7	11.5
York	7.8	-4.7	29.0	1.6	6.0	5.6
Craven	4.7	-7.4	12.0	-2.0	12.6	11.0
Hambleton	3.4	-6.0	14.2	-7.3	6.7	18.2
Harrogate	5.9	-3.7	14.2	2.0	9.1	11.7
Richmondshire	9.3	0.0	18.9	0.8	14.0	16.7
Ryedale	5.1	-4.5	14.1	-0.7	10.1	9.6
Scarborough	2.2	-8.3	13.1	-4.0	6.3	5.7
Selby	7.0	-3.4	14.2	3.0	13.5	13.3

Source: Office for National Statistics, Mid-Year Population Estimates 2001, 2008

The differences in the age profile of the population are apparent at local authority level in particular. For example, York has a higher percentage of 15-29 year olds, a share which has increased the most significantly on figures from 2001, though this is due largely to its student population. Craven, Ryedale and Scarborough have higher proportions of people who are 65 and over though the rate of increase is slowest for these authorities.

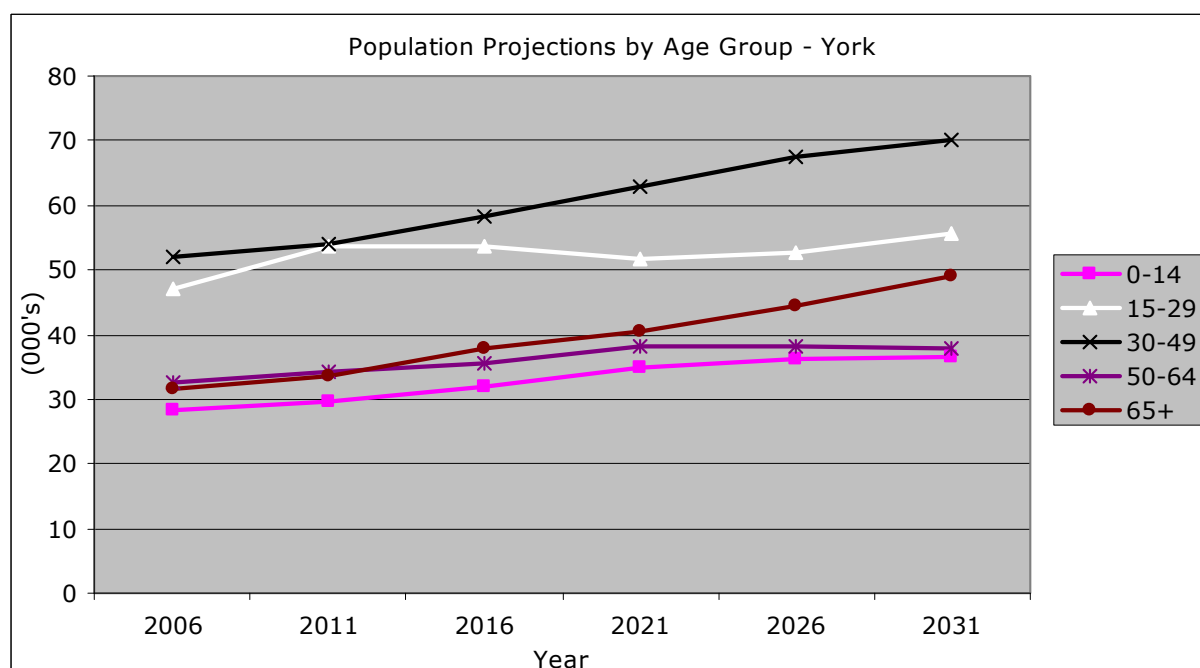
Future population projections show that the population in North Yorkshire is ageing, with the proportion of over 65's rising steeply compared to the younger age groups and which is broadly reflected in the England averages. The picture in York is different however, with the 30 – 49 age group rising at the same rate as the over 65's. Although the number of children is not predicted to rise as steeply as other age groups, absolute numbers of young people will remain high. This suggests that in-migration is the main contributing factor to the younger demographic in York.

Figure 4: Population Projections by age group, North Yorkshire 2006 - 2031



Source: Office for National Statistics, Sub-national Population Projections 2006

Figure 5: Population Projections by age group, York 2006 - 2031



Source: Office for National Statistics, Sub-national Population Projections 2006

5. ECONOMY

Table 8: At a Glance Summary – Economy

Indicator	Baseline Year	Current Data Year	York and North Yorkshire				Yorkshire and Humber				England			
			Baseline	Latest Data	Change on Baseline	Progress	Baseline	Latest Data	Change on Baseline	Progress	Baseline	Latest Data	Change on Baseline	Progress
H 2a - Total GVA (£billion)	1998	2007	8.8	13.5	+4.7 (+53.4%)	😊	57.6	86.3	+28.7 (+49.8%)	😊	658.2	989.7	+331.5 (+50.4%)	😊
H 2b - Total ISEW (£million)	1998	2007	Data not available				30,900	43,263	+12,363 (+40.0%)	😊	446,016	578,247	+132,231 (+29.6%)	😊
HL 1 - GVA per hour worked: Index UK=100 (workplace basis)	1998	2007	Data not available				94.0	89.2	-4.8 (-5.1%)	😞	101.1	101.8	+0.7 (0.7%)	😐
Proxy - GVA per head (£)	1998	2007	12,013	17,134	+5,121 (+42.6%)	😊	11,616	16,670	+5,054 (+43.5%)	😊	13,482	20,458	+6,976 (+51.7%)	😊
HL 2 - Business R&D Investment (as a % of GVA)	1998	2007	Data not available				0.5	0.5	No change	😐	1.5	1.5	No change	😐
HL 3 - Investment by UK Firms (as a % of Total GVA)	1998	2006	Data not available				9.3	5.9	-3.4pp (-36.6%)	😞	9.1	5.9	-3.2pp (-35.2%)	😞
HL 4 - VAT Registered Businesses (per 10,000 adult population)	1998	2008	476	508	+32 (+6.7%)	😊	314	345	+31 (+9.9%)	😊	367	419	+52 (+14.2%)	😊
Proxy - New Business Registration Rate	2004	2008	61.2	50.5	-10.7 (-17.5%)	😞	50.6	44.3	-6.2 (-12.5%)	😞	61.6	57.2	-4.4 (-7.1%)	😞
HL 5 - Working Age Employment Rate (%)	1999/2000	2008	77.8	80.0	+2.2pp (+2.9%)	😊	72.6	73.0	+0.4pp (+0.6%)	😐	74.4	74.2	-0.2pp (-0.3%)	😐
HL 6 - Median Weekly Pay (full time workers, workplace based)	1998	2009	298.5	447.4	+148.9 (+49.9%)	😊	313.7	450.8	+137.1 (+43.7%)	😊	339.4	495.2	+155.8 (+45.9%)	😊

6. QUALITY OF LIFE

Table 9: At a Glance - Quality of Life

Indicator	Baseline Year	Current Data Year	York and North Yorkshire				Yorkshire and Humber				England			
			Baseline	Latest Data	Change on Baseline	Progress	Baseline	Latest Data	Change on Baseline	Progress	Baseline	Latest Data	Change on Baseline	Progress
H 1 – Quality of Life Index	2004	2008	Data not available				60.7	62.3	+1.6 (+2.6%)	😊	62.0	63.7	+1.7 (+2.7%)	😊
HL 7 – Life Expectancy (Average Life Expectancy at Birth in years)	1998/ 2000	2006/ 2008	Male 76.5	79.1	+2.6 (+3.4%)	😊	74.7	77.1	+2.4 (+3.2%)	😊	75.4	77.9	+2.5 (+3.3%)	😊
			Female 80.8	82.8	+2.0 (+2.5%)		79.7	81.3	+1.6 (+2.0%)		80.2	82.0	+1.8 (+2.2%)	
HL 8 - Obesity prevalence amongst those aged 16+	1998	2007	Data not available				20.3	27.1	6.8pp (33.5%)	😞	19.2	24.1	4.9pp (25.6%)	😞
Proxy – Obesity prevalence amongst those aged 16+	-	2003/ 2005	-	23.4	-	-	-	24.1	-	-	-	23.6	-	-
HL 9 - Total recorded Crime (All types per 1000 population)	2002/ 2003	2008/ 2009	89	64	-25 (-28.1%)	😊	136	94	-42 (-30.9%)	😊	113	86	-27 (-23.9%)	😊
HL 10 - Violent crime against the person (per 1000 population)	2002/ 2003	2008/ 2009	11	10	-1 (-9.1%)	😊	14	16	+2 (+14.3%)	😞	16	16	No change	😊
HL 11 - % of adults doing regular sport and active recreation	2006	2009	23.2	25.2	+2.0 (+8.6%)	😊	20.1	22.0	+1.9pp (+9.5%)	😊	21.0	21.6	+0.6pp (+2.9%)	😊
HL 12 - % of the population having done cultural activity (arts, museums, libraries, etc) in the past 12 months	-	2009	-	52.1	-	-	-	45.0	-	-	-	49.0	-	-
HL 13 - % of SOAs in the most deprived 10% nationally	2004	2007	1.4	1.6	+0.2pp (+14.3%)	😞	17.4	16.7	-0.7pp (-4.0%)	😊	Not Applicable			
HL 14 - % of working age people living in workless houses	1998	2009	Data not available				14.6	14.0	-0.6pp (-4.1%)	😊	12.4	12.3	-0.1pp (-0.8%)	😊
Proxy - % of population claiming work related benefits (LAA)	2001	2009	8.9	8.4	-0.5pp (-5.6%)	😊	14.6	13.8	-0.8pp (-5.5%)	😊	12.8	12.8	No change	😊
Proxy - % of working age households that are workless	-	2008	-	10.8	-	-	-	16.4	-	-	-	11.2	-	-

7. ENVIRONMENT

Table 10: At a Glance - Environment

Indicator	Baseline Year	Current Data Year	York and North Yorkshire				Yorkshire and Humber				England			
			Baseline	Latest Data	Change on Baseline	Progress	Baseline	Latest Data	Change on Baseline	Progress	Baseline	Latest Data	Change on Baseline	Progress
H 3 - Climate Change: Total CO2 emissions (tonnes per capita)	2005	2007	9.7	9.3	-0.4 (-4.1%)	😊	10.2	9.9	-0.3 (-2.9%)	😊	8.5	8.3	-0.2 (-2.4%)	😊
HL 15 - Ecological Footprint: Global hectares per capita*	-	2006	-	4.87	-	-	-	4.54	-	-	-	4.64	-	-
HL 16 -Renewable Energy Capacity (as a % of Electricity Consumed)	2003	2008	Data not available				2.8	5.7	+2.9pp (+103.6%)	😊	2.5	4.0	+1.5pp (+60.0%)	😊
HL 17 - Total Municipal Waste sent to Landfill (%)	2005/ 2006	2008/ 2009	72	59	-13pp (-18.1%)	😊	67	56	-11pp (-16.4%)	😊	62	50	-12pp (-19.4%)	😊
HL 18 - SSSIs in Favourable or Recovering Condition (%)	2003	2009	44.2	90.7	+46.5pp (+105.2%)	😊	43.6	89.1	+45.5pp (+104.4%)	😊	56.9	88.0	+31.1pp (+55.5%)	😊
HL 19 - % of Local Areas within the Poorest Air Quality Quintile	2001	2005	0	0	No change	😊	20.5	11.5	-9.0pp (-78%)	😊	Not Applicable			
HL 20 - % of River Length Classified as Fair or Better (Biological)	1995	2008	93.8	97.4	+3.6pp (+3.8%)	😊	83.4	89.8	+6.4pp (7.7%)	😊	92.5	94.6	+2.1pp (+2.3%)	😊
HL 21 - Regional quality of place index	2003	2008	Data not available				1.00	1.07	+0.07 (+7.0%)	😊	1.00	1.07	+0.07 (+7.0%)	😊

* Figures quoted for this indicator are for the United Kingdom and not England

8. INFRASTRUCTURE

Table 11: At a Glance - Infrastructure

Indicator	Baseline Year	Current Data Year	York and North Yorkshire				Yorkshire and Humber				England			
			Baseline	Latest Data	Change on Baseline	Progress	Baseline	Latest Data	Change on Baseline	Progress	Baseline	Latest Data	Change on Baseline	Progress
HL22 – Total Vehicle Traffic (billion km per yr)	1998	2008	8.2	9.3	+1.1 (+13.4%)	☹️	38.0	42.5	+4.5 (+11.8%)	☹️	395.1	436.3	+41.2 (+10.4%)	☹️
HL23 – % of journeys to Work not by Car, Motorbike or Taxi	2006	2008	25	24	-1pp (-4.0%)	😐	26	24	-2pp (-7.7%)	☹️	28	29	+1pp (+3.6%)	😊
HL24 – House Prices to Earnings Ratio (lower quartiles)	1998	2008	4.44	8.59	+4.15 (+93.5%)	☹️	3.05	6.05	+3.00 (+98.4%)	☹️	3.65	6.98	+3.33 (+91.2%)	☹️
Data for Y&NY is unweighted and therefore not directly comparable to other areas														
HL25 – Number of New Homes Completed	1998/1999	2008/2009	Data not available				13,083	11,480	-1,603 (-12.3%)	☹️	140,708	133,830	-6,878 (-4.9%)	☹️
Proxy – Number of new homes completed	2003/2004	2008/2009	1,931	1,849	-82 (-4.2%)	☹️	14,900	15,629	+729 (+4.9%)	😊	Data not available			
HL26 – % New Homes on Previously Developed Land	1997/2000	2005/2008	52	75	+23pp (+44.2%)	😊	52	74	+22pp (+42.3%)	😊	56	75	+19pp (+33.9%)	😊
Data for Y&NY is unweighted and therefore not directly comparable to other areas														
HL27 – % of Homes at Significant or Moderate Risk of Flooding	-	2008	-	5.4	-	-	-	8.4	-	-	-	4.7	-	-

9. EDUCATION AND SKILLS

Table 12: At a Glance – Education and Skills

Indicator	Baseline Year	Current Data Year	York and North Yorkshire				Yorkshire and the Humber				England			
			Baseline	Latest Data	Change on Baseline	Progress	Baseline	Latest Data	Change on Baseline	Progress	Baseline	Latest Data	Change on Baseline	Progress
HL 28 - GCSEs: % of 16 year olds with five GCSEs (A* - C) including English and Mathematics	2005	2009	52.0	58.6	+6.6pp (+12.7%)	😊	39.1	47.3	+8.2pp (+19.9%)	😊	44.9	49.8	+4.9pp (+10.9%)	😊
HL 29 - Basic Skills: % of working age population without qualifications	1999	2008	13.8	8.6	-5.2pp (-37.7%)	😊	18.0	13.4	-4.6pp (-25.6%)	😊	16.5	12.3	-4.2pp (-25.5%)	😊
HL 30 - Standard Level Skills: % of working age population with NVQ Level 2+	1999	2008	63.2	71.7	+8.5pp (+9.3%)	😊	56.0	62.9	+6.9pp (+12.3%)	😊	57.7	64.6	+6.9pp (+12.0%)	😊
HL 31 - Intermediate Level Skills: % of working age population with NVQ Level 3+	1999	2008	43.6	53.0	+9.4pp (+21.6%)	😊	37.3	44.2	+6.9pp (+18.5%)	😊	39.1	46.5	+7.4pp (+18.9%)	😊
HL 32 - Higher Level Skills: % of working age population with NVQ Level 4+	1999	2008	24.3	32.6	+8.3pp (+34.2%)	😊	19.5	25.0	+5.5pp (+28.2%)	😊	22.4	28.7	+6.3pp (+28.1%)	😊
HL 33 - Workforce Training: % receiving job related training in the last thirteen weeks	2001	2008	25.3	21.5	-3.8pp (-15.0%)	😞	23.0	19.4	-3.6pp (-15.7%)	😞	23.0	20.0	-3.0pp (-13.0%)	😞

10. GOVERNANCE AND CIVIC PARTICIPATION

Table 13: At a Glance – Governance and Civic Participation

Indicator	Base line year	Latest Data Year	York and North Yorkshire				Yorkshire and Humber				England			
			Baseline	Latest Data	Change on Baseline	Progress	Baseline	Latest Data	Change on Baseline	Progress	Baseline	Latest Data	Change on Baseline	Progress
HL 34 - Public Services: % of LAs rated as performing well or excellently (CAA)*	-	2009	-	55.9	-	-	-	40.9	-	-	-	56.4	-	-
HL 35 - Civic Participation: % of population involved in civic affairs	2001	2008/2009	Data not available				34	38	+4pp (+11.8%)	😊	39	38	-1pp (-2.6%)	😞
Proxy - % of households involved in Civic Affairs	2005	2009	14.5	20.5	+6.0pp (+41.4%)	😊	11.2	16.8	+5.6pp (+50.0%)	😊	12.9	19.2	+6.3pp (+48.8%)	😊

The Comprehensive Area Assessment (CAA) is a new assessment tool for public services and uses a different method to the Comprehensive Performance Assessment (CPA) that was previously reported in Progress. The results of the CAA are not comparable with the CPA.

Table 14: Comprehensive Area Assessment Results by Local Authority, 2009

	Score for Managing Performance	Score for Managing Resources	Overall Score	Overall performance
North Yorkshire County Council	3	3	3	Performs Well
City of York Council	3	2	2	Performs Adequately
Craven District Council	2	1	1	Performs Poorly
Hambleton District Council	3	2	3	Performs Well
Harrogate Borough Council	3	2	3	Performs Well
Richmondshire District Council	3	2	2	Performs Adequately
Ryedale District Council	2	2	2	Performs Adequately
Scarborough Borough Council	3	2	3	Performs Well
Selby District Council	3	3	3	Performs Well

Source: The Audit Commission, 2009

11. TECHNICAL APPENDIX

This section explains any issues with the indicators used in the report and gives sources of data.

Table 15: Headline Indicators

Indicator	Key Policy Area	Source/Notes
H1	Quality of Life (Quality of Life Index)	Yorkshire Futures, 2009
		Figures for quality of life are taken from the Yorkshire Futures Quality of Life Index (available to download from the following link http://www.yorkshirefutures.com/progress-region), which uses a wide variety of measures to produce an index comparing quality of life in the UK. Data is not currently available at sub regional level. Scores for the individual quality of life indicators used in the index are however presented where appropriate/available.
H2a	Economic Growth (Total Gross Value Added)	Office of National Statistics, Regional Accounts, 2009
H2b	Economic Growth (Index of Sustainable Well Being)	New Economics Foundation, 2007
		Data is not available below the regional level and currently no proxy indicator is available
H3	Climate Change (CO2 emissions per capita)	'Local and Regional CO2 Emissions Estimates for 2005-2007', produced by AEA for Defra (Revised release 06/11/2009)

Table 16: High Level Indicators

Indicator		Source/Notes
HL1	GVA per hour worked on a workplace basis	Employment Earnings & Innovation Division, Office for National Statistics
		This measure is an index where UK=100. This means that changes to the baseline represent changes relative to how the UK is performing. Data is not available at sub regional level
Proxy	GVA per head	Office of National Statistics, Regional Accounts, 2009
HL2	Business R&D investment as a % of GVA	Business Enterprise R&D Survey and Regional Accounts, Office for National Statistics
		Data is not available at sub regional level
HL3	Investment by UK firms as a % of total GVA	Annual Business Inquiry & Regional Accounts, Office for National Statistics
		Data is not available at sub regional level
HL4	VAT registered businesses per 10,000 population	Nomis, VAT Registrations and Stocks
		This indicator has been replaced by the Business Registration Rate and will no longer be produced.
Proxy	New Business Registration Rate	ONS Business Demography
		Number of new VAT or PAYE registered businesses by the adult population
HL5	Working age ILO employment rate	Labour Force Survey, Annual Population Survey, Nomis

		Figures presented are for the period January to December for each year.
HL6	Median weekly pay (full time workers, workplace based)	Annual Survey of Hours and Earnings, Office for National Statistics
HL7	Average life expectancy at birth	Office for National Statistics
HL8	Obesity prevalence amongst those aged 16+	Compendium of Health Indicators, Health Survey for England 2008
Proxy	Obesity prevalence amongst those aged 16+	Neighbourhood Statistics, Healthy Lifestyle Behaviours Model Based Estimates of 2003-2005
HL9	Total recorded crime	Local Authority Level Police Recorded Crime, Home Office 2009
HL10	Total recorded violent crime against the person per 1,000 population	Local Authority Level Police Recorded Crime, Home Office 2009
		Changes were made to the methodology for reporting crime statistics between 2005/06 and 2006/07. Some changes in the data may therefore be a result of these changes.
HL11	Percentage of adults doing regular sport and active recreation	Active People Survey, Sport England
HL12	Percentage of the population having done relevant activity (arts, museums, libraries, etc) in the past 12 months	Department for Culture, Media and Sport, 2010
		Data was only previously collected at regional and national level. From 2008 it has also been collected on a local authority level, with 2008 data calculated to form baseline. This means that the 2009 data is the first year of data available for this measure. The figure presented is an average of the scores recorded for NIs 9, 10 and eleven.
HL13	Percentage of areas in the most deprived 10% nationally	Department for Communities and Local Government, Index of Multiple Deprivation, 2004, 2007
HL14	Percentage of working age people living in workless households	Nomis, Annual Population Survey 2009
		A workless household is defined as one that includes at least one person of working age and no one aged 16 and over is in employment.
Proxy	Percentage of population claiming work related benefits	Nomis, Work and Pensions Longitudinal Study
		Work related benefits are: Job Seekers Allowance; ESA and incapacity benefits; Lone Parents and Other Work related benefits. Rate used is the proportion of the working age population. Data presented is for August each year, using a 4 quarter rolled average.
Proxy	Percentage of working age households that are workless	APS Household data sets
		A workless household is defined as one that includes at least one person of working age and no one aged 16 and over is in employment. Data for York and North Yorkshire is aggregated from local authority level data. There are issues with how robust the data is at LA level and should therefore be used with caution.

HL15	Ecological footprint - global hectares per capita	Stockholm Environment Institute, Biology Department, University of York, Footprint Results from BRIO model, October 2009.
HL16	Renewable energy - renewable generated electricity as a % of electricity consumed	Department for Energy and Climate Change / RESTATS, 2009
		This indicator uses electricity consumption figures (GWh) from DECCs Regional Energy Consumption Statistics. It also uses renewable energy statistics (GWh generated from renewables) from the RESTATS website which are collected by surveys, and which are considered to be the most robust and accurate statistics on renewable energy available. This indicator can only be calculated on a national and regional level.
HL17	Percentage of total municipal waste sent to landfill	Defra Waste Statistics
HL18	Percentage of SSSIs in favourable or recovering condition	Natural England
HL19	Percentage of Local Areas within the Poorest Air Quality Quintile	Neighbourhood Statistics / Staffordshire University
HL20	Percentage of river length classified as fair or better (biological)	Environment Agency
		How water quality is monitored is changing from the General Quality Assessment (GQA), to the Water Framework Directive (WFD), a stricter monitoring framework.
HL21	Regional Quality of Place index (urban renaissance)	Yorkshire Forward
		Data is not available at sub regional level
HL22	Total vehicle traffic (car + taxi), billion km per year	Road Traffic Statistics, Department for Transport
HL23	Percentage of journeys to work not by car/motorbike/taxi	Office for National Statistics, Labour Force Survey
HL24	House prices to earnings ratio (lower quartiles)	Department for Communities and Local Government
		Figures presented for York and North Yorkshire are an unweighted average of local authority level data and not therefore directly comparable.
HL25	Number of new homes completed	Department for Communities and Local Government
		Due to a number of missing local authority returns, data is not available for the sub region
Proxy	Number of new homes completed	Yorkshire and Humber Regional Spatial Strategy Annual Monitoring Report
HL26	Percentage of new homes on previously developed land	Department for Communities and Local Government
HL27	Percentage of homes at significant or moderate risk of flooding	National Flood Risk Assessment, Environment Agency, 2009

HL28	Percentage of pupils with 5 or more GCSEs at A*-C including English & Maths	DCSF: GCSE and Equivalent Results for Young People in England 2008/09 (Revised)
HL29	Percentage of working age population without qualifications	ONS, Nomis, Labour Force Survey and Annual Population Survey
HL30	Percentage of working age population with NVQ Level 2+	ONS, Nomis, Labour Force Survey and Annual Population Survey
HL31	Percentage of working age population with NVQ Level 3+	ONS, Nomis, Labour Force Survey and Annual Population Survey
HL32	Percentage of working age population with NVQ Level 4+	ONS, Nomis, Labour Force Survey and Annual Population Survey
HL33	Percentage receiving job related training in the past 13 weeks	ONS, Nomis, Labour Force Survey and Annual Population Survey
HL34	Percentage of local authorities rated as good or excellent	<p>The Audit Commission, 2009.</p> <p>In April 2007, the Government commissioned a new outcome-focused, proportionate, risk-based system of assessment and inspection for local services called the Comprehensive Area Assessment (CAA). The first set of results were published in December 2009 CAA comprises two elements:</p> <ul style="list-style-type: none"> ♦ an area assessment to look at how well local public services are delivering better results for local people on local priorities - such as health, economic prospects and community safety - and how likely they are to improve in the future ♦ Organisational assessments, which for councils and fire and rescue authorities will be undertaken jointly by the local public service inspectorates. These deliver scores for use of resources (looking at how the individual public bodies deliver value for money in the use of their resources) and managing performance themes. Together these give a combined single score for organisational effectiveness. Efficiency and value for money are key at a time of increasingly constrained public resources.
HL35	Percentage of population involved in 'civic affairs'	The Citizenship Survey, DCLG
Proxy	Percentage of households involved in civic affairs	Acxiom, National Lifestyle Survey, 2010. Acxiom UK Ltd, 2010. All rights to the data contained in Table 13 belong to Acxiom UK Ltd and may not be used or reproduced without the express permission of Acxiom UK Ltd.