



Housing

	April- June 1999 (£)	April-June 2004 (£)	% Increase
Craven	81,002	175,371	116.50
Hambleton	93,452	204,758	119.10
Harrogate	101,386	213,611	110.69
Richmondshire	81,819	163,097	99.34
Ryedale	80,822	178,282	120.58
Scarborough	60,531	137,672	127.44
Selby	68,309	166,222	143.33
York	77,758	161,009	107.06

The table opposite outlines the average house prices across the sub region. Craven has seen an increase of 116% between 1999 and 2004. This is a large increase and the average house price now stands at £175,371. Due to the agricultural nature of the district and the consequential low incomes within the industry, housing affordability is a key issue in the district.

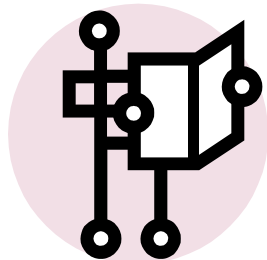
Source: HM Land Registry, Property Price

Key Fact

The Craven district has 7 SOAs in the top 10% of SOAs nationally for the barriers to housing and services domain, which measures different aspects of access. These SOAs tend to be located in the wards of Glusburn and Skipton North and South, which are nearer urban centres. There are also 4 SOAs in the bottom 10% of SOAs for this domain, these are situated in the rural wards of Barden Fell, Gargrave and Malhamdale, Ingelton and Clapham and Upper Wharfedale.

Source: Index of Multiple Deprivation, ODPM, 2004

The York and North Yorkshire Social Inclusion Network was formed in 2004 with the main aims of ensuring social inclusion is on the broader agenda, pooling information, research and data and sharing best practice. These Social Inclusion factsheets form part of the Network's role of providing a resource of key facts and figures. For more information on the Social Inclusion Network and access to further data and research on social inclusion please visit our web pages at: http://www.ynypu.org.uk/social_inclusion/SIN.stm



The York and North Yorkshire Partnership Unit acts as the secretariat for the York and North Yorkshire Social Inclusion Network their contact details are:
 12 Clifton Moor Business Village
 James Nicholson Link
 Clifton Moor
 York
 YO30 4XG

Phone: 01904 477970
 Fax: 01904 477977
 Website: www.ynypu.org.uk



Community Safety

	No. of Offences committed 02/03	Offences per 1,000 population 02/03	No. of Offences committed 03/04	Offences per 1,000 population 03/04
Craven	3,595	67	3,535	65.9
Hambleton	4,608	55	5,036	60
Harrogate	10,921	72.2	10,898	72
Richmondshire	2,550	54.2	2,589	48.3
Ryedale	2,610	51	2,318	46
Scarborough	11,351	107	11,230	106
Selby	6,618	80.7	6,666	87.2
York	25,872	142.8	29,384	162.3

In 2003/04 the Craven district had one of the lower crime rates across the sub-region at 65.9 criminal offences per 1000 population. This is a decrease from the previous year. There is an obvious relationship between rurality and the crime rate as York experienced more than twice the number of offences within the same period.

Source: North Yorkshire Police configured by Safer York Partnership

The Craven district has 10 SOAs in the Crime domain which are in the top 10% of SOAs nationally, 1 SOA in Embsay-with-Eastby is in the top% 1 nationally.

Source: Index of Multiple Deprivation, ODPM, 2004

Overview of Social Exclusion in Craven

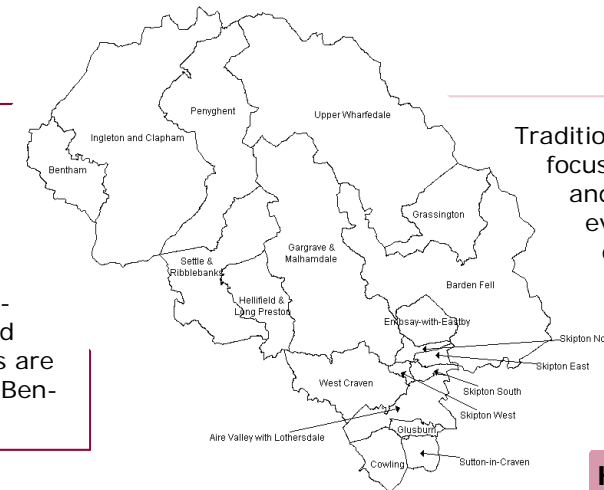
Social Exclusion

"A shorthand term for what can happen when people or areas suffer from a combination of linked problems such as unemployment, poor skills, low incomes, poor housing, high crime, bad health and family breakdown." (Social Exclusion Unit, 2000)

Winter 2004

About Craven

The Craven district covers 1,177 sq km, it is mainly a rural area which covers the Southern part of the Yorkshire Dales National Park. The district is situated to the east of the sub-region and borders the districts of Richmondshire and Harrogate, Bradford and Lancashire. The main settlements are Skipton, Settle, Grassington and Benham.



Traditional industry in the district has focused on agriculture, quarrying and textile manufacturing however certain industries are in decline. Tourism and financial services are key employers.



Transport

The main urban centre of Skipton has good transport links, with three railway lines providing access to Leeds, Bradford, Lancaster and Carlisle. However the more rural parts of the district have a greater reliance on cars and this can lead to isolation for those who don't have access to transport. This is highlighted by the fact that 14% of households in rural Craven do not have a car or van whereas in urban parts of the district 25.7% of households do not have a car.

Source: DEFRA Rural Evidence Hub 2004



Deprivation

The Indices of Deprivation 2004, measures deprivation at the Super Output Area (SOA) level.

In the overall results of the Index of Multiple Deprivation, the Craven district has 2 SOAs in the top 10% of SOAs nationally. These are found in the wards of Glusburn and Skipton North, this is a relatively low number in comparison to some of the other districts within the sub-region.

There are a total of 490 SOAs in the sub-region, 2 of Craven's SOAs are in the bottom 10% of SOAs in York and North Yorkshire. These SOAs are both situated in Skipton town itself however in contrast there is also 1 SOA in the top 10% of SOAs across the sub region, this is also situated in Skipton town in the Skipton North ward. This highlights the diversity of the Skipton town as it experiences both prosperity and deprivation.

Further analysis of the Indices of Deprivation 2004 will be outlined in different sections of this factsheet.

Key Fact

The DEFRA rural definition outlines that 59.8% of people in Craven live in rural areas. This is compared to an average of 20% of people across the Yorkshire and Humber region. In particular 42% of people in the Craven district live within 'sparse' rural areas.

Source: DEFRA Rural Evidence Hub 2004

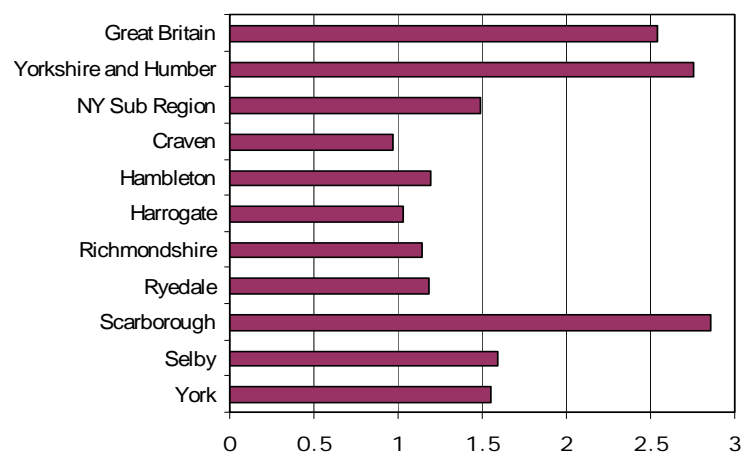
	IMD 2004	
	Bottom 10% Nationally	Top 10% Nationally
Craven	0	2
Hambleton	0	10
Harrogate	0	26
Richmondshire	0	2
Ryedale	0	1
Scarborough	7	0
Selby	0	6
York	0	26
NY Sub Region	7	73

Source: Index of Multiple Deprivation, ODPM, 2004



Employment

Unemployment Rate 2003



Source: Nomis 2004

Craven's employment rate in 2002/03 was 82.7%. This is higher than the national and regional employment rates but slightly lower the sub regional rate.

Source: LFS, 2002/03

The graph opposite highlights the unemployment rate in the Craven district, this is lower than the sub-regional, regional and national averages.

Source: Nomis 2004

Key Fact

According to the Housing Needs Survey 2001, 503 housing units per year are required, this need was highlighted as mostly social housing.

Source: Craven District Council, Community Strategy 2003

	Average Household Income 2003 (£)
NY Sub Region	26,263
Craven	26,330
Hambleton	28,744
Harrogate	29,676
Richmondshire	26,018
Ryedale	24,035
Scarborough	21,470
Selby	28,118
York	25,295

© Acxiom UK Ltd. All rights in the data contained in this data belong to Acxiom UK Ltd and may not be used or reproduced without the express permission of Acxiom UK Ltd.

Key Fact

Craven has 8 SOAs in the Education domain, which are in the top 10% of SOAs nationally. In particular 1 of these SOAs is in the top 1% of SOAs nationally, this SOA is situated in the Skipton North ward.

Source: Index of Multiple Deprivation, ODPM, 2004

	% of population aged 16-60 with poor literacy	% of population aged 16-60 with poor numeracy
NY Sub Region	23.2%	22.1%
Craven	25.5%	23.9%
Hambleton	21.8%	20.2%
Harrogate	20.6%	19.2%
Richmondshire	22.3%	19.5%
Ryedale	27.4%	24.4%
Scarborough	26.6%	25.5%
Selby	22.3%	22.1%
York	23.0%	23.3%



Income

The average household income for the Craven district is £26,330 this is the third highest income across the sub-region and is just higher than the sub-regional average. It is over £4860 higher than the average income for the Scarborough district, which is the lowest across the sub-region.

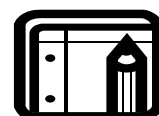
Source: Acxiom UK Ltd 2003

24% of Craven's full-time workers earn less than £13,000 per year, this is around the average for the sub-region.

Source: North Yorkshire Household Survey 2000

Craven has 4 SOAs that are in the top 10% of SOAs nationally in the Income domain. This domain measures various factors such as Income Support households. These SOAs are located in the wards of Glusburn, Ingleton and Clapham, Penyghent and Skipton North. Craven has no SOAs in bottom 10% nationally for this domain.

Source: Index of Multiple Deprivation, ODPM, 2004



Education

Within the Craven district 25% of people have no qualifications, this is higher than the sub-regional and regional averages. There is also a high percentage (23%) of people who are educated to NVQ level 4/5, this is higher than both the sub-regional and regional averages.

Source: Census 2001

The table to the right outlines the percentage of the population who have either poor literacy or numeracy skills. Craven compares well to the other districts, with both literacy and numeracy levels above the sub regional averages.

Source: Basic Skills Agency 2003



Health

	Life Expectancy Female 2000-2002	Life Expectancy Male 2000-2002
England & Wales	80.57	75.88
Yorkshire & Humber	80.2	75.4
Craven	81.6	78
Hambleton	81.6	77.9
Harrogate	81.9	77.3
Richmondshire	82.0	76.8
Ryedale	82.4	78.1
Scarborough	80.9	76
Selby	80.4	77
York	81.5	76.9

The map below highlights Incapacity Benefit Claimants as a percentage of the total population aged 16-65. The map clearly illustrates that there is a concentration of Incapacity Benefit claimants in some areas of the Craven district. In particular 8.96% of people aged 16-65 within the Skipton South ward claim Incapacity Benefit, this figure is 7.28% in Skipton West ward.

Key Fact

There is one SOA in the Craven district in the Health domain which is in the top 10% of SOAs nationally. This SOA is situated in the ward of Emsay-with-Eastby.

Source: Index of Multiple Deprivation, ODPM, 2004

9,241 people in the Craven district have a limiting long-term illness, this is 17.23% of the district's population which is the second highest percentage across the sub-region.

2001 Census figures highlight that there are 5,689 people who provide unpaid care in the Craven district, which makes up 10.6% of the population. 75.48% of carers provide care for between 1-19 hours per week.

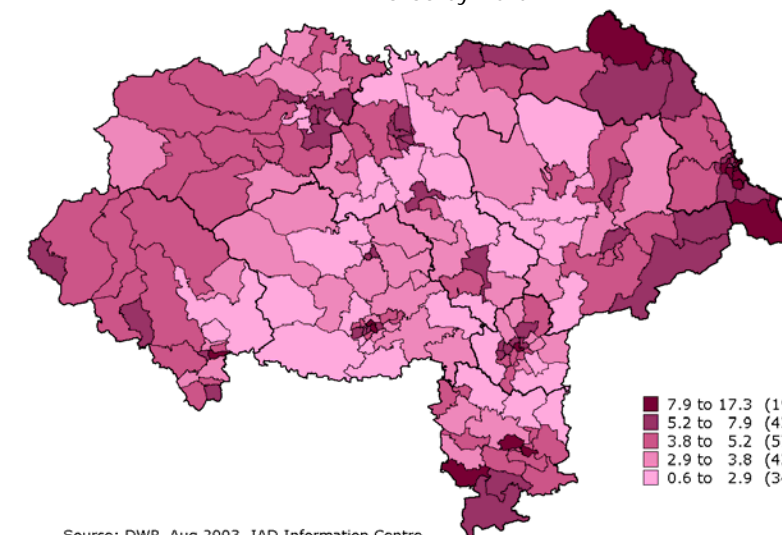
8.18% of all people in the Craven district perceive their health as 'not good'. This is the second highest percentage across the sub-region. Consequently, 21.68% of people in the Craven district perceive their health as 'fairly good' and 70.13% perceive their health as 'good'.

Source: Census 2001

Life Expectancy for Craven district residents compares well to the other districts in the sub-region. Female life expectancy stands at 81.6, whereas male life expectancy is the second highest at 78. Both male and female life expectancy exceeds regional and national averages.

Source: ONS, 2003

Incapacity Benefit Claimants as a percentage of the total population aged 16-65 by ward



Source: DWP, Aug 2003, IAD Information Centre



Population

The 2001 Census gives the total population within the Craven district as 53,620. The district has a population density of 46 people per sq km, which is one of the lowest densities across the sub-region. The main settlement are Skipton and Settle. The remainder of the population is dispersed throughout the district in villages and remote hamlets.

The ethnic make up of the Craven district is predominantly white at 98.55%, this is much higher than the national average which is 92.1%.

4.2% of all households in the Craven district are made up of lone parents households. This is lower than both the sub-regional and regional averages. This is split by 13.33% male lone parents and 86.67% of female lone parents.

Source: Census 2001.

