



Housing

	April– June 1999 (£)	April–June 2004 (£)	% Increase
Craven	81,002	175,371	116.50
Hambleton	93,452	204,758	119.10
Harrogate	101,386	213,611	110.69
Richmondshire	81,819	163,097	99.34
Ryedale	80,822	178,282	120.58
Scarborough	60,531	137,672	127.44
Selby	68,309	166,222	143.33
York	77,758	161,009	107.06

The table opposite outlines the average house prices across the sub-region. The Hambleton district has seen an increase of 119% between 1999 and 2004. This is the one of the higher increases across York and North Yorkshire. The average house price now stands at £204,758, which is the second highest across the sub-region. Due to the low-paid nature of some occupations within the Hambleton district, housing affordability is a key issue.

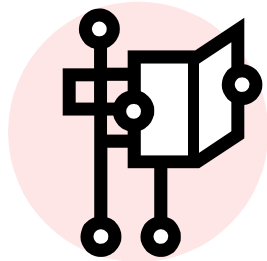
Source: HM Land Registry, Property Price

Key Fact

The DEFRA Rural Definition highlights that 81.6% of people in the Hambleton district live in rural areas, this is compared to a 20% average across Yorkshire and Humber. Of these people who live in rural areas, 30% live in 'sparse' rural areas and 70% live in 'less sparse' rural areas.

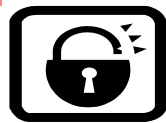
Source: DEFRA Rural Evidence Hub 2004

The York and North Yorkshire Social Inclusion Network was formed in 2004 with the main aims of ensuring social inclusion is on the broader agenda, pooling information, research and data and sharing best practice. These Social Inclusion factsheets form part of the Network's role of providing a resource of key facts and figures. For more information on the Social Inclusion Network and access to further data and research on social inclusion please visit our web pages at http://www.ynypu.org.uk/social_inclusion/SIN.stm



The York and North Yorkshire Partnership Unit acts as the secretariat for the York and North Yorkshire Social Inclusion Network their contact details are:
 12 Clifton Moor Business Village
 James Nicholson Link
 Clifton Moor
 York
 YO30 4XG

Phone: 01904 477970
 Fax: 01904 477977
 Website: www.ynypu.org.uk



Community Safety

	No. of Offences committed 02/03	Offences per 1,000 population 02/03	No. of Offences committed 03/04	Offences per 1,000 population 03/04
Craven	3,595	67	3,535	65.9
Hambleton	4,608	55	5,036	60
Harrogate	10,921	72.2	10,898	72
Richmondshire	2,550	54.2	2,589	48.3
Ryedale	2,610	51	2,318	46
Scarborough	11,351	107	11,230	106
Selby	6,618	80.7	6,666	87.2
York	25,872	142.8	29,384	162.3

In 2003/04 60 criminal offences per 1000 population took place across the Hambleton district. This is the third lowest number of offences across the sub-region. There is an obvious relationship between rurality and the crime rate as York had just over twice the number of offences taking place within the same period.

Source: North Yorkshire Police configured by Safer York Partnership

The Hambleton district has 21 SOAS in the Crime domain which are in the top 10% of SOAs nationally, 4 of these SOAs are in the top 1% nationally. These SOA are situated in the wards of Helperby, Romanby, Shipton and Thorntons. Hambleton has no SOAs which are in the bottom 10% of SOAs nationally, for this domain.

Source: Index of Multiple Deprivation, ODPM, 2004

Social Exclusion
 "A shorthand term for what can happen when people or areas suffer from a combination of linked problems such as unemployment, poor skills, low incomes, poor housing, high crime, bad health and family breakdown." (Social Exclusion Unit, 2000)

About Hambleton

The district of Hambleton covers an area of 817 sq km; it is mainly a rural area which includes the towns of Northallerton, Thirsk and Easingwold. The district is situated centrally in the sub-region and borders the districts of Harrogate, York, Richmondshire, Ryedale, Scarborough and four Local Authorities in the North East region



Industry in Hambleton has traditionally focused upon agriculture and other business activities including food and drink and engineering. The public sector is also a major employer.

Winter 2004



Transport

The urban centre of Northallerton has relatively good transport links, via regular train services however in the more rural parts of the district transport links are relatively poor and infrequent. The lack of public transport, particularly for remote villages provides added difficulties, in terms of access to employment and other support agencies and services

The need for access to transport in rural areas is further emphasised by the fact that 12.1% of households in rural Hambleton do not have a car, whereas in urban areas 22.4% of households do not have a car.

Source: DEFRA Rural Evidence Hub, 2004



Deprivation

The Indices of Deprivation 2004, measures deprivation at the Super Output Area (SOA) level.

In the overall results of the Index of Multiple Deprivation, the Hambleton district has 10 SOAs in the top 10% of SOAs nationally. These are found in the wards of Bedale, Easingwold, Great Ayton, Leeming, Northallerton Broomfield, Romanby and Stokesley.

There are a total of 490 SOAs in the sub region, 7 of Hambleton's SOAs are in the top 10% of SOAs in York and North Yorkshire. These SOAs are situated in Easingwold, Northallerton Broomfield, Romanby and Stokesley. Hambleton has no SOAs in the bottom 10% sub-regionally.

Further analysis of the Indices of Deprivation 2004 will be outlined in different sections of this factsheet.

Key Fact

Hambleton has 9 SOAs that are in the top 10% of SOAs nationally for the Environment domain, there are 4 SOAs which are in the top 1%. These SOAs are situated in the wards of Bedale, Northallerton Broomfield, Romanby, Stokesley, Ripon Spa and Richmond East.

Source: Index of Multiple Deprivation, ODPM, 2004

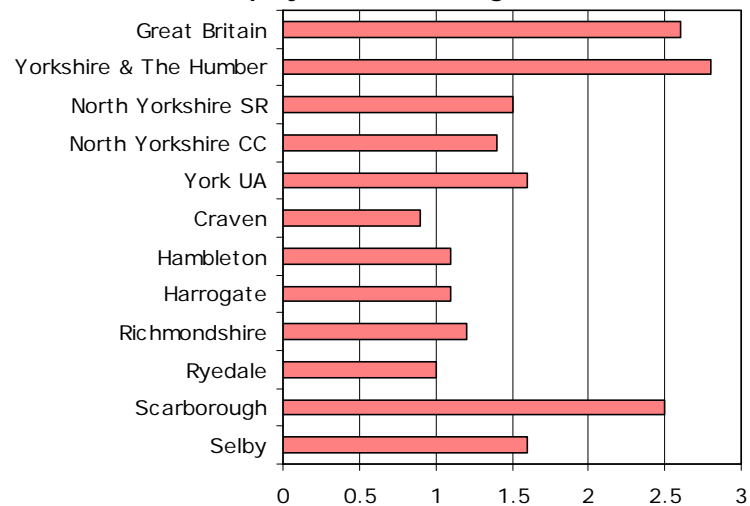
	IMD 2004	
	Bottom 10%	Top 10%
Craven	0	2
Hambleton	0	10
Harrogate	0	26
Richmondshire	0	2
Ryedale	0	1
Scarborough	7	0
Selby	0	6
York	0	26
NY Sub Region	7	73

Source: Index of Multiple Deprivation, ODPM, 2004



Employment

Unemployment Rate - August 2003



Source: Nomis 2004

Hambleton's employment rate in 2002/03 was 85.30%. This is the highest rate across the sub-region and is higher than both the regional and sub-regional employment rates.

Source: LFS 2002/03

The graph opposite highlights the unemployment rate in the Hambleton district, this is one of lowest rates across the sub-region and is lower than the sub-regional average.

Source: Nomis 2004

Key Fact

Hambleton's turnout for the 2003 local election was 38.7%, this was the third highest turnout across the sub-region.

Source: University of Plymouth, Local Elections Handbooks 1998-2003

	Average Household Income 2003 (£)
NY Sub Region	26,263
Craven	26,330
Hambleton	28,744
Harrogate	29,676
Richmondshire	26,018
Ryedale	24,035
Scarborough	21,470
Selby	28,118
York	25,295

© Acxiom UK Ltd. All rights in the data contained in this data

Key Fact

Hambleton has 14 SOAs in the top 10% of SOAs nationally for the Education domain, which measures various factors such as average scores at Key Stage tests and individuals not remaining in education. There is 1 SOA in the bottom 10% of SOAs nationally. This SOA is situated in the ward of Thirsk.

Source: Index of Multiple Deprivation, ODPM, 2004

	% of population aged 16-60 with	% of population aged 16-60 with
NY Sub Region	23.2%	22.1%
Craven	25.5%	23.9%
Hambleton	21.8%	20.2%
Harrogate	20.6%	19.2%
Richmondshire	22.3%	19.5%
Ryedale	27.4%	24.4%
Scarborough	26.6%	25.5%
Selby	22.3%	22.1%
York	23.0%	23.3%



Income

The average household income for the Hambleton district is £28,744, this is second highest income across the sub-region and well exceeds the sub-regional average. It is over £6500 more than the average income for the Scarborough district, which is the lowest income across the sub-region.

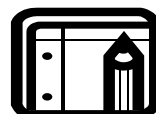
Source: Acxiom UK Ltd 2003

17% of Hambleton's full-time workers earn less than £13,000 per year, this is one of the lowest percentages across the sub region.

Source: North Yorkshire Household Survey 2000

The Hambleton district has 9 SOAs that are in the top 10% of SOAs nationally for the Income domain, this domain measures various factors such as Income Support households. There is 1 SOA which is in the top 1% of SOAs nationally, this SOA is situated in Romanby. Hambleton has no SOAs in the bottom 10% nationally, for this domain.

Source: Index of Multiple Deprivation, ODPM, 2004



Education

Within the Hambleton district 25% of people aged 16-74 have no qualifications, this is lower than the sub-regional average. There is also a high percentage of people who are educated to NVQ level 4/5 (24%).

Source: Census 2001

The table to the right outlines the percentage of the population who have either poor literacy or numeracy skills. Hambleton has the second lowest poor literacy levels and the third lowest poor numeracy levels. They are both lower than the sub-regional averages.

Source: Basic Skills Agency 2003



Health

	Life Expectancy Female 2000-2002	Life Expectancy Male 2000-2002
England & Wales	80.57	75.88
Yorkshire & Humber	80.2	75.4
Craven	81.6	78
Hambleton	81.6	77.9
Harrogate	81.9	77.3
Richmondshire	82.0	76.8
Ryedale	82.4	78.1
Scarborough	80.9	76
Selby	80.4	77
York	81.5	76.9

The map below highlights Incapacity Benefit claimants as a percentage of the total population aged 16-65. The map illustrates a concentration of Incapacity Benefit claimants in urban areas of the Hambleton district. In particular 7.37% of people aged 16-65 within the Northallerton North ward claim Incapacity Benefit. This figure is 6.6% in the Thirsk ward and 6.23% in Northallerton Central.

Key Fact

Since 1997 Hambleton has seen year on year increases in the number of homelessness applications to the Council.

Source: Hambleton District Council Housing Strategy 2002-05.



Population

The 2001 Census gives the total population within the District as 84,111. This is the fourth largest population in the sub-region. The main settlement areas are Northallerton, Thirsk and Easingwold. The remainder of the population is dispersed throughout the district in villages and remote hamlets.

The ethnic make up of the Hambleton district is predominantly white at 99.25%, this is much higher than the national average which is 92.1%.

4.08% of all households in the Hambleton district are made up of lone parents households. The district has the highest percentage of male lone parents across the sub-region at 13.92%. The percentage of male lone parents exceeds both national and regional averages.

Source: Census 2001.

13,476 people in the Hambleton district have a limiting long-term illness, this is 16.02% of the district's population and is around average in comparison to the other districts.

2001 Census figures highlight that there are 8,358 people who provide unpaid care in the Hambleton district, which makes up 9.87% of all people. 16.65% of these unpaid carers provide care for 50+ hours per week, this is the second lowest percentage across the sub-region.

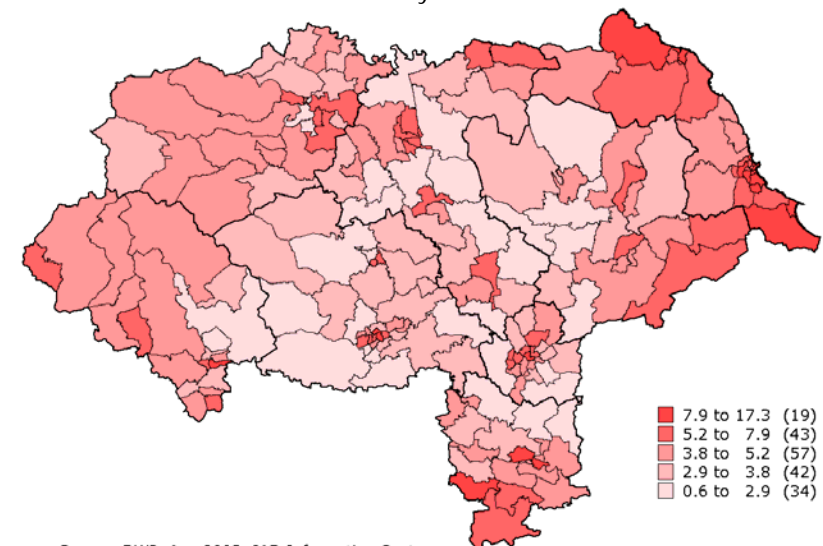
7.57% of all people in the Hambleton district perceive their health as 'not good'. This is lower than the average for the sub-region. Consequently, 20.67% of people in the Hambleton district perceive their health as 'fairly good' and 71.76% perceive their health as 'good'.

Source: Census 2001

Life Expectancy for Hambleton district residents compares well to the other districts in the sub-region. Female life expectancy is the stands at 81.6, whereas male life expectancy is 77.9. Both male and female life expectancy for the Hambleton districts exceeds national and regional figures.

Source: ONS, 2003

Incapacity Benefit Claimants as a percentage of the total population aged 16-65 by ward



Source: DWP, Aug 2003, IAD Information Centre

Hambleton

