



Housing

	April- June 1999 (£)	April-June 2004 (£)	% Increase
Craven	81,002	175,371	116.50
Hambleton	93,452	204,758	119.10
Harrogate	101,386	213,611	110.69
Richmondshire	81,819	163,097	99.34
Ryedale	80,822	178,282	120.58
Scarborough	60,531	137,672	127.44
Selby	68,309	166,222	143.33
York	77,758	161,009	107.06

The table opposite outlines the average house prices across the sub region. Harrogate has seen an increase of 110.69% between 1999 and 2004. Although this the third lowest increase across York and North Yorkshire, the average house price is the highest across the sub-region and stands at £213,611. Due to the low-paid nature of some occupations within the Harrogate district, housing affordability is a key issue.

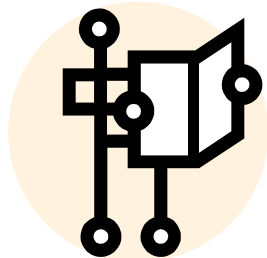
Source: HM Land Registry, Property Price

Key Fact

The DEFRA Rural Definition highlights that 32.5% of people in the Harrogate district live in rural areas, this is compared to a 20% average across Yorkshire and Humber. Of the Harrogate residents who live in rural areas, 9% live in 'sparse' rural areas and 81% live in 'less sparse' rural areas.

Source: DEFRA Rural Evidence Hub 2004

The York and North Yorkshire Social Inclusion Network was formed in 2004 with the main aims of ensuring social inclusion is on the broader agenda, pooling information, research and data and sharing best practice. These Social Inclusion factsheets form part of the Network's role of providing a resource of key facts and figures. For more information on the Social Inclusion Network and access to further data and research on social inclusion please visit our web pages at: http://www.ynypu.org.uk/social_inclusion/SIN.stm



The York and North Yorkshire Partnership Unit acts as the secretariat for the York and North Yorkshire Social Inclusion Network their contact details are:
 12 Clifton Moor Business Village
 James Nicholson Link
 Clifton Moor
 York
 YO30 4XG

Phone: 01904 477970
 Fax: 01904 477977
 Website: www.ynypu.org.uk



Community Safety

	No. of Offences committed 02/03	Offences per 1,000 population 02/03	No. of Offences committed 03/04	Offences per 1,000 population 03/04
Craven	3,595	67	3,535	65.9
Hambleton	4,608	55	5,036	60
Harrogate	10,921	72.2	10,898	72
Richmondshire	2,550	54.2	2,589	48.3
Ryedale	2,610	51	2,318	46
Scarborough	11,351	107	11,230	106
Selby	6,618	80.7	6,666	87.2
York	25,872	142.8	29,384	162.3

In 2003/04 72 criminal offences per 1000 population took place across the Harrogate district. This is the fourth highest amount across the sub region, York, Scarborough and Selby have a higher number of recorded offences. There is an obvious relationship between rurality and the crime rate as more rural areas of Ryedale and Richmondshire have much lower numbers of offences taking place.

Source: North Yorkshire Police configured by Safer York Partnership

The Harrogate district has 47 SOAs in the Crime domain which are in the top 10% of SOAs nationally, 12 of these SOAs are in the top 1% nationally. There is only 1 SOA which is in the bottom 10% of SOAs nationally, this SOA is situated in the Low Harrogate ward.

Source: Index of Multiple Deprivation, ODPM, 2004

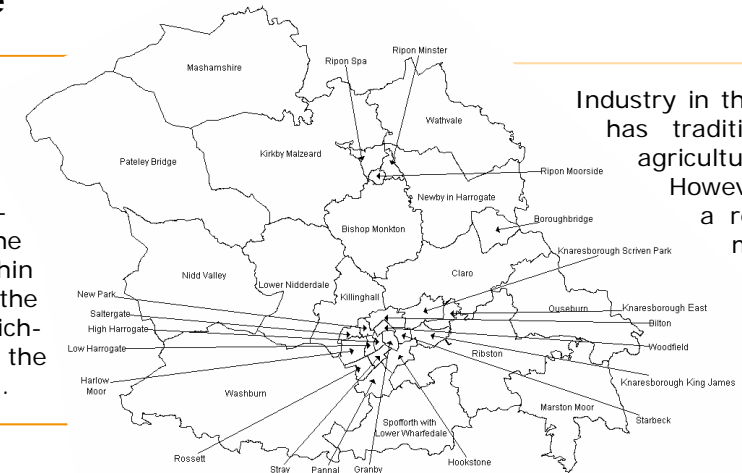
Social Exclusion

"A shorthand term for what can happen when people or areas suffer from a combination of linked problems such as unemployment, poor skills, low incomes, poor housing, high crime, bad health and family breakdown." (Social Exclusion Unit, 2000)

Winter 2004

About Harrogate

The district of Harrogate covers an area of 1,308 sq km, it is mainly a rural area which includes the towns of Harrogate, Ripon, Knaresborough, and Boroughbridge. The district is situated centrally within the sub-region and borders the districts of Craven, Selby, Richmondshire, Hambleton and the City of York, Leeds and Bradford.



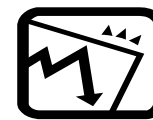
Industry in the Harrogate district has traditionally focused on agriculture and tourism. However there has been a recent shift towards more business focused tourism and digital industries.



Transport

Harrogate town has relatively good transport links, with railway links to both Leeds and York. However the more rural parts of the district have a greater reliance on cars and this can lead to isolation for those who do not have access to transport. This is illustrated by the fact that 9.3% of households in rural Harrogate do not have a car or van, compared to urban parts of the district where 21.5% of households do not have a car or van.

Source: DEFRA Rural Evidence Hub 2004



Deprivation

The Indices of Deprivation 2004, measures deprivation at the Super Output Area (SOA) level.

In the overall results of the Index of Multiple Deprivation, the Harrogate district has 26 SOAs in the top 10% of SOAs nationally.

There are a total of 490 SOAs in the sub region, 3 of Harrogate's SOAs are in the bottom 10% of SOAs in York and North Yorkshire. These SOAs are situated in Harrogate town itself however in contrast there are also 17 SOAs which are in the top 10% of SOAs across the sub region, these are SOAs are situated across the district. This highlights the prosperity of the Harrogate district.

Further analysis of the Indices of Deprivation 2004 will be outlined in different sections of this factsheet.

Key Fact

Harrogate has 3 SOAs in the overall IMD which are in the top 1% of SOAs nationally, these SOAs are situated in the wards of Pannal and Rossett. Harrogate is the only district in the sub-region to have SOAs in the top 1% nationally for the overall IMD.

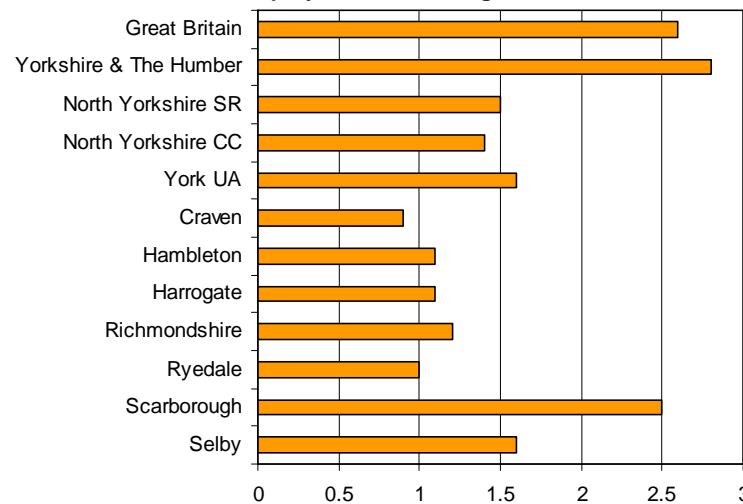
Source: Index of Multiple Deprivation, ODPM, 2004

	IMD 2004	
	Bottom 10% Nationally	Top 10% Nationally
Craven	0	2
Hambleton	0	10
Harrogate	0	26
Richmondshire	0	2
Ryedale	0	1
Scarborough	7	0
Selby	0	6
York	0	26
NY Sub Region	7	73

Source: Index of Multiple Deprivation, ODPM, 2004

Employment

Unemployment Rate - August 2003



Source: Nomis 2004

Harrogate's employment rate in 2002/03 was 83.30%. This is the second highest rate across the sub-region and is higher than national, regional and sub-regional employment rates.

Source: LFS, 2002/03

The graph opposite highlights the unemployment rate in the Harrogate district, this is one of the lowest rates across the sub-region and is lower than the sub-regional, regional and national averages.

Source: Nomis 2004

Key Fact

Harrogate's turnout for the 2003 local election was 34.7%, this was the second lowest turnout across the sub-region.

Source: University of Plymouth, Local Elections Handbooks 1998-2003

	Average Household Income 2003 (£)
NY Sub Region	26,263
Craven	26,330
Hambleton	28,744
Harrogate	29,676
Richmondshire	26,018
Ryedale	24,035
Scarborough	21,470
Selby	28,118
York	25,295

© Acxiom UK Ltd. All rights in the data contained in this data belong to Acxiom UK Ltd and may not be used or reproduced without the express permission of Acxiom UK Ltd.

Key Fact

Harrogate has 45 SOAs which are in the top 10% of SOAs nationally for the Education domain, this measures several indicators such as average scores at various key stages and the proportion of individuals attending higher education. There are 7 SOAs which are in top 1% of SOAs nationally, they are situated in wards of Pannal, Rossett and Stray.

Source: Index of Multiple Deprivation, ODPM, 2004

	% of population aged 16-60 with poor literacy	% of population aged 16-60 with poor numeracy
NY Sub Region	23.2%	22.1%
Craven	25.5%	23.9%
Hambleton	21.8%	20.2%
Harrogate	20.6%	19.2%
Richmondshire	22.3%	19.5%
Ryedale	27.4%	24.4%
Scarborough	26.6%	25.5%
Selby	22.3%	22.1%
York	23.0%	23.3%

Income

The average household income for the Harrogate district is £29,676 this is highest income across York and North Yorkshire and well exceeds the sub-regional average. This is over £8206 more than the average income for the Scarborough district, which is the lowest across the sub-region.

Source: Acxiom UK Ltd 2003

26% of Harrogate's full-time workers earn less than £13,000 per year, this is the fourth highest percentage across the sub region.

Source: North Yorkshire Household Survey 2000

Harrogate has 20 SOAs in the top 10% of SOAs nationally in the Income domain, which measures various factors such as Income Support households. 1 SOA is in the top 1% nationally. This SOA is situated in the ward of Bilton. Harrogate has no SOAs in the bottom 10% of SOAs nationally for this domain.

Source: Index of Multiple Deprivation, ODPM, 2004

Education

Within the Harrogate district 22% of people aged 16-74 have no qualifications, this is lower than the sub-regional average and more than 10% lower than the regional average. Consequently the Harrogate district has the highest percentage of people (25%) aged 16-74, across the sub-region, who are educated to NVQ level 4/5.

Source: Census 2001

The table to the right outlines the percentage of the population who have either poor literacy or numeracy skills. The Harrogate district compares well to the other districts as it has both the lowest percentage of population who have poor literacy or poor numeracy.

Source: Basic Skills Agency 2003

Health

	Life Expectancy Female 2000-2002	Life Expectancy Male 2000-2002
England & Wales	80.57	75.88
Yorkshire & Humber	80.2	75.4
Craven	81.6	78
Hambleton	81.6	77.9
Harrogate	81.9	77.3
Richmondshire	82.0	76.8
Ryedale	82.4	78.1
Scarborough	80.9	76
Selby	80.4	77
York	81.5	76.9

The map below highlights the percentage of Incapacity Benefit Claimants as a percentage of the total population aged 16-65. The map clearly illustrates that there is a concentration of Incapacity Benefit claimants in Harrogate town. In particular 9.11% of people aged 16-65 within the Woodfield ward claim Incapacity Benefit. This figure is 7.97% in the Granby ward and 6.15% in the Low Harrogate ward.

Key Fact

Harrogate has 19 SOAs which are in the bottom 10% of SOAs nationally for the barriers to housing and services domain, which measures aspects of access. 7 of these SOAs are in the bottom 1% nationally. There are 2 SOAs which are in the top 10% nationally.

Source: Index of Multiple Deprivation, ODPM, 2004

23,591 people in the Harrogate district have a limiting long-term illness, this is 15.59% of the district's population and is around average in comparison to the other districts.

2001 Census figures highlight that there are 14,524 people who provide unpaid care in the Harrogate district, which makes up 9.87% of all people. 18.61% of these unpaid carers provide care for 50+ hours per week, this is the second highest percentage across the sub-region.

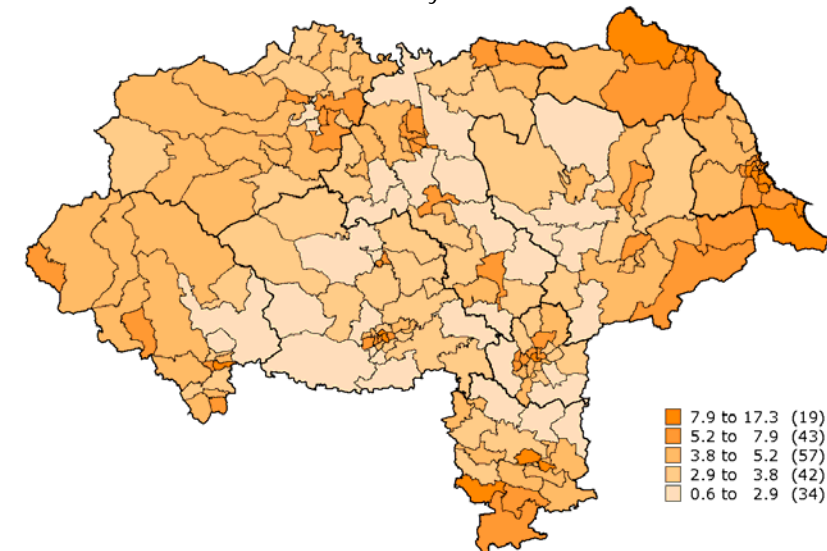
7.21% of all people in the Harrogate district perceive their health as 'not good'. This is just lower than the average for the sub region. Consequently, 20.65% of people in the Harrogate district perceive their health as 'fairly good' and 72.15% perceive their health as 'good'.

Source: Census 2001

Life Expectancy for the Harrogate district residents compares well across the sub-region. Female life expectancy is the third highest in the sub-region at 81.9, whereas male life expectancy is the fourth highest at 77.3.

Source: ONS, 2003

Incapacity Benefit Claimants as a percentage of the total population aged 16-65 by ward



Population

The 2001 Census gives the total population within the District as 151,336, this is the second highest population across the sub-region. The main settlement areas are Harrogate, Ripon, Knaresborough and Boroughbridge. The remainder of the population is dispersed throughout the district in villages and remote hamlets.

The ethnic make up of the Harrogate district is predominantly white at 98.44%, this is much higher than the national average which is 92.1%.

4.65% of all households in the Harrogate district are made up of lone parents households. This is lower than the national, regional and sub-regional averages. This is split by 10.47% male lone parents and 89.53% female lone parents.

Source: Census 2001.

