



Housing

	April– June 1999 (£)	April–June 2004 (£)	% Increase
Craven	81,002	175,371	116.50
Hambleton	93,452	204,758	119.10
Harrogate	101,386	213,611	110.69
Richmondshire	81,819	163,097	99.34
Ryedale	80,822	178,282	120.58
Scarborough	60,531	137,672	127.44
Selby	68,309	166,222	143.33
York	77,758	161,009	107.06

The table opposite outlines the average house prices across the sub region. Richmondshire has seen an increase of 99.34% between 1999 and 2004. This is the lowest increase across York and North Yorkshire. The average house price now stands at £163,097. Due to the low-paid nature of some occupations within the Richmondshire district, housing affordability is a key issue.

Source: HM Land Registry, Property Price

Key Fact

The DEFRA Rural Definition highlights that 100% of people in the Richmondshire district live in rural areas, this is compared to a 20% average across Yorkshire and Humber, obviously highlighting the rural nature of the district. 25% of Richmondshire's residents live in 'sparse' rural areas and 75% live in 'less sparse' rural areas.

Source: DEFRA Rural Evidence Hub 2004



Community Safety

	No. of Offences committed 02/03	Offences per 1,000 population 02/03	No. of Offences committed 03/04	Offences per 1,000 population 03/04
Craven	3,595	67	3,535	65.9
Hambleton	4,608	55	5,036	60
Harrogate	10,921	72.2	10,898	72
Richmondshire	2,550	54.2	2,589	48.3
Ryedale	2,610	51	2,318	46
Scarborough	11,351	107	11,230	106
Selby	6,618	80.7	6,666	87.2
York	25,872	142.8	29,384	162.3

In 2003/04 48.3 criminal offences per 1000 population took place across the Richmondshire district. This is the second lowest amount across the sub region, only Ryedale has a lower number of recorded offences. There is an obvious relationship between rurality and the crime rate as the Scarborough district had more than twice as many offences taking place within the same period.

Source: North Yorkshire Police configured by Safer York Partnership

Richmondshire has 17 SOAs in the Crime domain, which are in the top 10% of SOAs nationally, 7 of these SOAs are in the top 1%. These SOAs are situated in the wards of Bolton Castle, Hipswell, Lower Wensleydale, Penhill, Reeth and Arken-garth, Richmond East and Scotton. Richmondshire has no SOAs in the bottom 10% of SOAs nationally.

Source: Index of Multiple Deprivation, ODPM, 2004

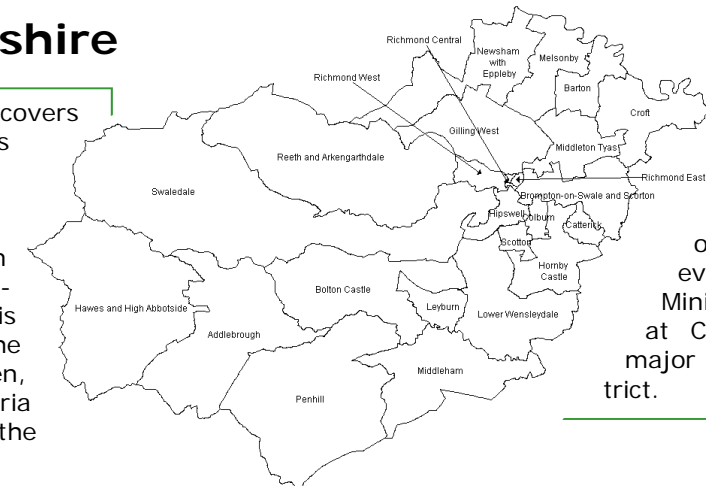
Social Exclusion

"A shorthand term for what can happen when people or areas suffer from a combination of linked problems such as unemployment, poor skills, low incomes, poor housing, high crime, bad health and family breakdown." (Social Exclusion Unit, 2000)

Winter 2004

About Richmondshire

The district of Richmondshire covers an area of 1,319 sq km which is the second largest district in the sub-region, with the second lowest population density. It is a rural area that includes the main settlements of Richmond, Leyburn and Hawes. The district is situated to the North West of the sub-region and borders Craven, Harrogate, Hambleton, Cumbria and two Local Authorities in the North East region.



Due to the rural nature of the district industry has traditionally focused on agriculture. However tourism and the Ministry of Defence based at Catterick Garrison are major employers in the district.



Transport

Although public transport is available across the district through a number of bus service, there is a relatively infrequent service in the more rural areas. The lack of public transport, particularly for remote villages provides added difficulties, in terms of access to employment and other support agencies and services.

The need for access to transport is further emphasised by the fact that Richmondshire has the second lowest percentage of households without a car or van at 14.6%

Source: Census 2001



Deprivation

The Indices of Deprivation 2004, measures deprivation at the Super Output Area (SOA) level.

In the overall results of the Index of Multiple Deprivation, the Richmondshire district has two SOAs which are in top 10% nationally. These are both found in the ward of Richmond East.

There are a total of 490 SOAs in the sub-region, one SOA is in the top 10% of SOAs across the sub-region. This SOA is situated in the ward of Richmond East. Richmondshire has no SOAs in the bottom 10% of SOAs across York and North Yorkshire.

Further analysis of the Indices of Deprivation 2004 will be outlined in different sections of this factsheet.

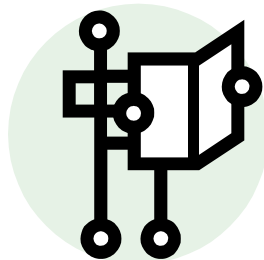
Key Fact

Richmondshire has 9 SOAs that are in the top 10% of SOAs nationally for the Environment domain. These SOAs are situated in the wards of Catterick, Hipswell, Richmond Central, Richmond East and Scotton. Richmondshire has no SOAs in the bottom 10%.

Source: Index of Multiple Deprivation, ODPM, 2004

	IMD 2004	
	Bottom 10%	Top 10%
Craven	0	2
Hambleton	0	10
Harrogate	0	26
Richmondshire	0	2
Ryedale	0	1
Scarborough	7	0
Selby	0	6
York	0	26
NY Sub Region	7	73

Source: Index of Multiple Deprivation, ODPM, 2004



The York and North Yorkshire Partnership Unit acts as the secretariat for the York and North Yorkshire Social Inclusion Network their contact details are:
12 Clifton Moor Business Village
James Nicholson Link
Clifton Moor
York
YO30 4XG

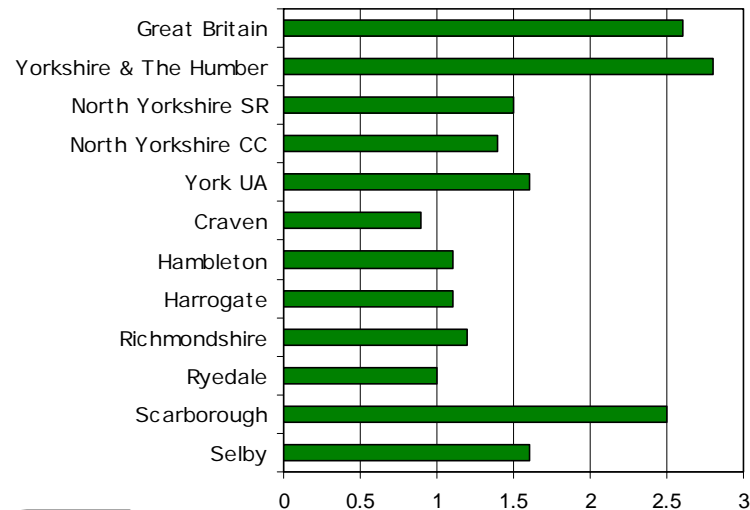
Phone: 01904 477970

Fax: 01904 477977

Website: www.ynypu.org.uk

Employment

Unemployment Rate - August 2003



Source: Nomis 2004

Richmondshire's employment rate in 2002/03 was 80.7%. This is higher than sub-regional, regional and national employment rates.

Source: LFS 2002/03

The graph opposite highlights the unemployment rate in the Richmondshire district, this is lower than sub-regional, regional and national rates.

Source: Nomis 2004

Key Fact

At the 2003 Local Election, the turnout for Richmondshire was 39.7% which was the second highest turnout across the sub-region.

Source: University of Plymouth, Local Elections Handbooks 1998-2003

	Average Household Income 2003 (£)
NY Sub Region	26,263
Craven	26,330
Hambleton	28,744
Harrogate	29,676
Richmondshire	26,018
Ryedale	24,035
Scarborough	21,470
Selby	28,118
York	25,295

© Acxiom UK Ltd. All rights in the data contained in this data belong to Acxiom UK Ltd and may not be used or reproduced without the express permission of Acxiom UK Ltd.

Key Fact

Richmondshire has 16 SOAs which are in the bottom 10% of SOAs nationally for the Barriers to Housing and Services domain. 9 of the SOAs are in the bottom 1% nationally. These SOAs are situated in Addleborough, Bolton Castle, Gilling West, Hawes and High Abbotside, Lower Wensleydale, Newsham and Eppleby, Penhill, Reeth and Arkethgarthdale and Swaledale.

Source: Index of Multiple Deprivation, ODPM, 2004

	% of population aged 16-60 with poor literacy	% of population aged 16-60 with poor numeracy
NY Sub Region	23.2%	22.1%
Craven	25.5%	23.9%
Hambleton	21.8%	20.2%
Harrogate	20.6%	19.2%
Richmondshire	22.3%	19.5%
Ryedale	27.4%	24.4%
Scarborough	26.6%	25.5%
Selby	22.3%	22.1%
York	23.0%	23.3%

Income

The average household income for the Richmondshire district is £26,018 this is lower than the sub-regional average. However it is still more than £4500 higher than the average income for the Scarborough district, which is the lowest across the sub-region.

Source: Acxiom UK Ltd 2003

30% of Richmondshire's full-time workers earn less than £13,000 per year, this is the lowest percentage across the sub region and highlights the low-paid nature of occupations within the district.

Source: North Yorkshire Household Survey 2000

Richmondshire has 5 SOAs which are in the top 10% of SOAs nationally for the Income domain, which measures various factors such as Income Support households. These SOAs are located in the wards of Hipswell, Penhill, Richmond East and Scotton.

Source: Index of Multiple Deprivation, ODPM, 2004

Education

Within the Richmondshire district 25% of people aged 16-60 have no qualifications, this is lower than the sub-regional average. There is also a comparatively low percentage of people who are educated to level 4/5 at 19% of the population, which is lower than the sub-regional average but higher than the regional average.

Source: Census 2001

The table to the right outlines the percentage of the population who have either poor literacy or numeracy skills. Richmondshire compares well to the other districts, with the third lowest poor literacy levels and the second lowest poor numeracy levels.

Source: Basic Skills Agency 2003

Health

	Life Expectancy Female 2000-2002	Life Expectancy Male 2000-2002
England & Wales	80.57	75.88
Yorkshire & Humber	80.2	75.4
Craven	81.6	78
Hambleton	81.6	77.9
Harrogate	81.9	77.3
Richmondshire	82.0	76.8
Ryedale	82.4	78.1
Scarborough	80.9	76
Selby	80.4	77
York	81.5	76.9

The map below highlights the percentage of Incapacity Benefit Claimants as a percentage of the total population aged 16-65. Although Richmondshire compares well to the other districts with regards to claimants, the map clearly illustrates that there is a higher concentration of claimants in some areas, in particular 5.72% of people aged 16-65 within the Hornby Castle ward claim Incapacity Benefit, this figure is 6.44% in the Richmond East ward.

Key Fact

Richmondshire has 1 SOA in top 10% nationally for the Education domain, this SOA is situated in Middleton Tyas. However there is also 1 SOA which is in the bottom 10% of SOAs nationally, this SOA is situated in Colburn.

Source: Index of Multiple Deprivation, ODPM, 2004

Population

The 2001 Census gives the total population within the District as 47,010, this is the lowest population across the sub-region. The main settlement areas are Richmond, Leyburn and Hawes. The remainder of the population is dispersed throughout the district in villages and remote hamlets.

The ethnic make up of the Richmondshire district is predominantly white at 98.25%, this is much higher than the national average which is 92.1%.

4.87% of all households in the Richmondshire district are made up of lone parents households. This is split by 12.24% male lone parents and 87.76% female lone parents. This is higher than the sub-regional average but lower than the national and regional averages.

Source: Census 2001.

7,170 people in the Richmondshire district have a limiting long-term illness, this is 15.25% of the district's population and the lowest percentage across the sub-region.

2001 Census figures highlight that there are 4,011 people who provide unpaid care in the Richmondshire district, which makes up 8.5% of all people. 17.15% of these unpaid carers provide care for 50+ hours per week, this is around average in comparison to the other districts across the sub-region.

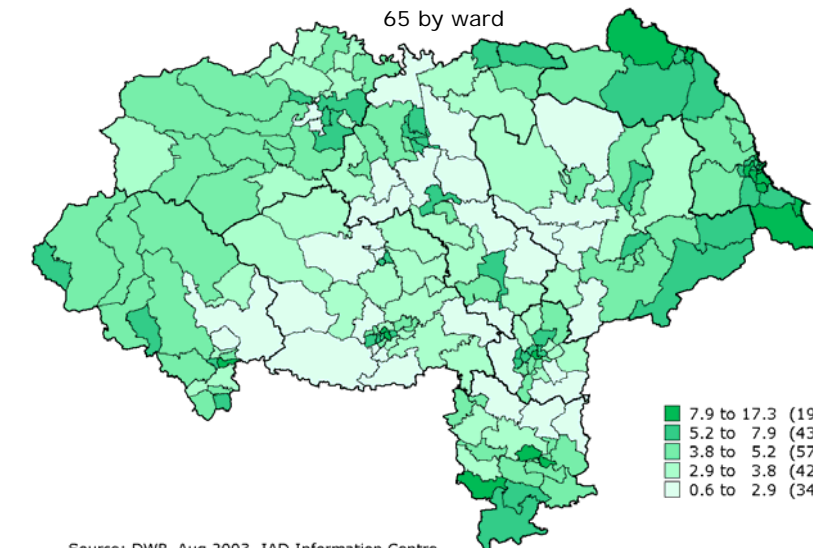
6.72% of all people in the Richmondshire district perceive their health as 'not good'. This is the lowest percentage across the sub-region. Consequently, 20.30% of people in the Richmondshire perceive their health as 'fairly good' and 72.98% perceive their health as 'good', which is the highest percentage across the sub-region.

Source: Census 2001

Life Expectancy for Richmondshire district residents compares well to the other districts in the sub-region. Female life expectancy is the second highest in the sub-region at 82.0 whereas male life expectancy is the second lowest at 76.8. Both male and female life expectancy figures exceed than the national and regional figures.

Source: ONS, 2003

Incapacity Benefit Claimants as a percentage of the total population aged 16-65 by ward



Source: DWP, Aug 2003, IAD Information Centre

