



Housing

	April– June 1999 (£)	April-June 2004 (£)	% Increase
Craven	81,002	175,371	116.50
Hambleton	93,452	204,758	119.10
Harrogate	101,386	213,611	110.69
Richmondshire	81,819	163,097	99.34
Ryedale	80,822	178,282	120.58
Scarborough	60,531	137,672	127.44
Selby	68,309	166,222	143.33
York	77,758	161,009	107.06

The table opposite outlines the average house prices across the sub-region. Ryedale has seen an increase of 120.58% between 1999 and 2004. This is one of the highest increases across York and North Yorkshire. The average house price now stands at £178,282, which is one of higher average prices. Due to low incomes in the district, housing affordability is a key issue.

Source: HM Land Registry, Property Price

Key Fact

The DEFRA Rural Definition highlights that 76.5% of people in the Ryedale district live in rural areas, this is compared to a 20% average across Yorkshire and Humber. Of these people who live in rural areas, 70% live in 'sparse' rural areas and 30% live in 'less sparse' rural areas.

Source: DEFRA Rural Evidence Hub 2004



Community Safety

	No. of Offences committed 02/03	Offences per 1,000 population 02/03	No. of Offences committed 03/04	Offences per 1,000 population 03/04
Craven	3,595	67	3,535	65.9
Hambleton	4,608	55	5,036	60
Harrogate	10,921	72.2	10,898	72
Richmondshire	2,550	54.2	2,589	48.3
Ryedale	2,610	51	2,318	46
Scarborough	11,351	107	11,230	106
Selby	6,618	80.7	6,666	87.2
York	25,872	142.8	29,384	162.3

In 2003/04 46 criminal offences per 1000 population took place across the Ryedale district. This is the lowest amount across the sub region. There is an obvious relationship between rurality and the crime rate as the districts with greater urban areas tend to have higher crime rates. For example Scarborough had twice as many offences taking place within the same period.

Source: North Yorkshire Police configured by Safer York Partnership

Ryedale has 16 SOAs in the top 10% of SOAs nationally for the Crime domain, there are 2 SOAs which are in the top 1% nationally, they are situated in Ampleforth and Norton East.

Source: Index of Multiple Deprivation, ODPM, 2004

Social Exclusion

"A shorthand term for what can happen when people or areas suffer from a combination of linked problems such as unemployment, poor skills, low incomes, poor housing, high crime, bad health and family breakdown." (Social Exclusion Unit, 2000)

Winter 2004

About Ryedale

The district of Ryedale covers an area of 1,507 sq km which is the largest district in the sub-region. It is mainly a rural area which includes the towns of Malton, Norton, Pickering and Helmsley. The district is situated to the east of the sub-region and borders the districts of Scarborough, Hambleton, the East Riding of Yorkshire and the City of York.



Due to the rural nature of the district industry has traditionally focused on agriculture. However the food and drink industry, engineering and tourism are now major employers.



Transport

Malton and Norton have relatively good transport links, with a train line to York and Scarborough however the more rural areas have poorer public transport and therefore a greater reliance on cars, which can lead to isolation for those who do not have access to transport. This is highlighted by the fact that 14.3% of households in rural areas do not have a car or van whereas in the urban areas of the district 26.4% of households do not have a car or van.

Source: DEFRA Rural Evidence Hub 2004



Deprivation

The Indices of Deprivation 2004, measures deprivation at the Super Output Area (SOA) level.

In the overall results of the Index of Multiple Deprivation, the Ryedale district has 1 SOA in the top 10% of SOAs nationally. This SOA is situated in the ward of Malton.

There are a total of 490 SOAs in the sub region, Ryedale has no SOAs in either the top 10% sub-regionally or the bottom 10% sub-regionally. The other local authority areas all have SOAs in either the top or bottom 10% sub-regionally.

Further analysis of the Indices of Deprivation 2004 will be outlined in different sections of this factsheet.

Key Fact

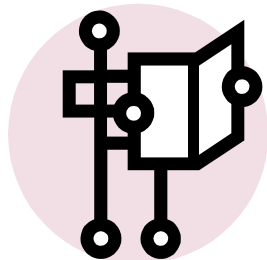
Ryedale has 13 SOAs which are in top 10% of SOAs nationally for the Health domain. These SOAs are situated across the district in 13 different wards. Ryedale has no SOAs in the bottom 10% of SOAs nationally for this domain.

Source: Index of Multiple Deprivation, ODPM, 2004

	IMD 2004	
	Bottom 10% Nationally	Top 10% Nationally
Craven	0	2
Hambleton	0	10
Harrogate	0	26
Richmondshire	0	2
Ryedale	0	1
Scarborough	7	0
Selby	0	6
York	0	26
NY Sub Region	7	73

Source: Index of Multiple Deprivation, ODPM, 2004

The York and North Yorkshire Social Inclusion Network was formed in 2004 with the main aims of ensuring social inclusion is on the broader agenda, pooling information, research and data and sharing best practice. These Social Inclusion factsheets form part of the Network's role of providing a resource of key facts and figures. For more information on the Social Inclusion Network and access to further data and research on social inclusion please visit our web pages at http://www.ynypu.org.uk/social_inclusion/SIN.stm



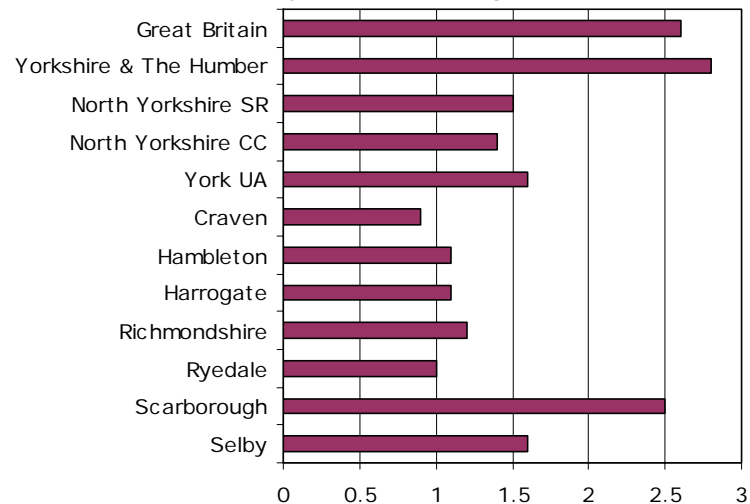
The York and North Yorkshire Partnership Unit acts as the secretariat for the York and North Yorkshire Social Inclusion Network their contact details are:
12 Clifton Moor Business Village
James Nicholson Link
Clifton Moor
York
YO30 4XG

Phone: 01904 477970
Fax: 01904 477977
Website: www.ynypu.org.uk



Employment

Unemployment Rate - August 2003



Source: Nomis 2004

Ryedale's employment rate in 2002/03 was 81.20%. This is higher than both the regional and sub-regional average employment rates.

Source: LFS 2002/03

The graph opposite highlights the unemployment rate in the Ryedale district, this is the second lowest rate across the sub-region and is lower than sub-regional, regional and national averages.

Source: Nomis 2004

Key Fact

At the 2003 Local Election, the turnout for Ryedale was 40.7%, this was the highest turnout across the sub-region.

University of Plymouth, Local Elections Handbooks 1998-2003

	Average Household Income 2003 (£)
NY Sub Region	26,263
Craven	26,330
Hambleton	28,744
Harrogate	29,676
Richmondshire	26,018
Ryedale	24,035
Scarborough	21,470
Selby	28,118
York	25,295

© Acxiom UK Ltd. All rights in the data contained in this data belong to Acxiom UK Ltd and may not be used or reproduced without the express permission of Acxiom UK Ltd.

Key Fact

Ryedale has 12 SOAs in the bottom 10% of SOAs nationally for the Barriers to Housing and Services domain. 2 of these SOAs are in the bottom 1% nationally, they are situated in the wards of Helmsley and Thornton Dale. However there are 3 Ryedale SOAs in the top 10% of SOAs nationally for this domain.

Source: Index of Multiple Deprivation, ODPM, 2004

	% of population aged 16-60 with poor literacy	% of population aged 16-60 with poor numeracy
NY Sub Region	23.2%	22.1%
Craven	25.5%	23.9%
Hambleton	21.8%	20.2%
Harrogate	20.6%	19.2%
Richmondshire	22.3%	19.5%
Ryedale	27.4%	24.4%
Scarborough	26.6%	25.5%
Selby	22.3%	22.1%
York	23.0%	23.3%



Income

The average household income for the Ryedale district is £24,035 this is second lowest income across the sub-region. The average household income for Harrogate, which is the highest across the sub-region, is over £5500 more than the Ryedale average.

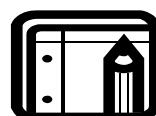
Source: Acxiom UK Ltd 2003

28% of Ryedale's full-time workers earn less than £13,000 per year, this is the third highest percentage across the sub-region and is 10% more than the figure for Selby.

Source: North Yorkshire Household Survey 2000

Ryedale has 2 SOAs which are in the top 10% for SOAs nationally for the Income domain, which measures various factors such as Income Support households. These SOAs are situated in the wards of Malton and Norton West.

Source: Index of Multiple Deprivation, ODPM, 2004



Education

Within the Ryedale district 30% of people aged 16-74 have no qualifications, this is the highest percentage across the sub-region and is therefore higher than the sub-regional average, but not the regional average. There is also a comparatively low percentage of people who are educated to level 4/5 at 19%.

Source: Census 2001

The table to the right outlines the percentage of the population who have either poor literacy or numeracy skills. Ryedale has the highest percentage of the population aged 16-60 who have poor literacy skills at 27.4%. The district also has the second highest percentage of the population aged 16-60 with poor numeracy skills.

Source: Basic Skills Agency 2003



Health

	Life Expectancy Female 2000-2002	Life Expectancy Male 2000-2002
England & Wales	80.57	75.88
Yorkshire & Humber	80.2	75.4
Craven	81.6	78
Hambleton	81.6	77.9
Harrogate	81.9	77.3
Richmondshire	82.0	76.8
Ryedale	82.4	78.1
Scarborough	80.9	76
Selby	80.4	77
York	81.5	76.9

8,573 people in the Ryedale district have a limiting long-term illness, this is 16.85% of the district's population and is around average in comparison to the other districts.

2001 Census figures highlight that there are 5,095 people who provide unpaid care in the Ryedale district, which makes up 10.01% of all people. 18.37% of these unpaid carers provide care for 50+ hours per week, this is the third highest percentage across the sub-region.

7.75% of all people in the Ryedale district perceive their health as 'not good'. Consequently, 22.85% of people in the Ryedale district perceive their health as 'fairly good' and 69.39% perceive their health as 'good'.

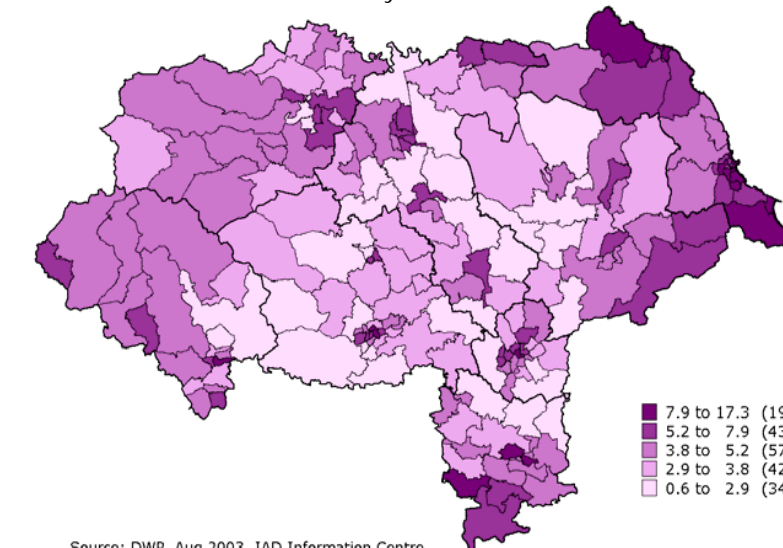
Source: Census 2001

Life Expectancy for Ryedale district residents compares well to the other districts in the sub region. Both female and male life expectancy are the highest in the sub-region. Female life expectancy for Ryedale residents is 82.4 whereas male life expectancy is 78.1. Both life expectancy figures exceed the national and regional figures.

Source: ONS, 2003

The map below highlights the percentage of Incapacity Benefit claimants as a percentage of the total population aged 16-65. Although Ryedale compares well to the other districts in the sub-region with regards to claimants, the map clearly illustrates that there is a higher concentration of Incapacity Benefit claimants in some of the southern wards such as the Wolds and Sherburn wards.

Incapacity Benefit Claimants as a percentage of the total population aged 16-65 by ward



Source: DWP, Aug 2003, IAD Information Centre

Key Fact

The Ryedale Housing Strategy outlines a total affordable housing need of 506 units per year.

Source: Ryedale District Council Housing Strategy 2002/03 -2005/6



Population

The 2001 Census gives the total population within the District as 50,872. The main settlement areas are Malton, Norton, Pickering and Helmsley. The remainder of the population is dispersed throughout the district in villages and remote hamlets.

The ethnic make up of the Ryedale district is predominantly white at 99.37%, this is highest white population across the sub-region and is much higher than the national average which is 92.1%. This is illustrated by the fact that Ryedale is in the top 10 Local Authorities who have the highest white population.

3.89% of all households in the Ryedale district are made up of lone parents households. This is the lowest amount across the sub-region and is lower than the sub-regional, regional and national averages.

Source: Census 2001.

