



Environment

The quality of the beaches in North Yorkshire has improved significantly in recent years. An increasing number of beaches have achieved guideline status and therefore the incidence of beaches failing the standard has been reduced. In addition the Whitby and Scarborough North Bay beaches have gained the Blue Flag Award.

In relation to the Indices of Deprivation, the Living Environment Indices measures deprivation related to the quality of housing, air quality and road traffic accidents. Scarborough has 17 SOAs which are in the bottom 10% of all SOAs across the country. These SOAs are all located within the town centres of Scarborough and Whitby and feature particularly in the wards of Castle and Central in Scarborough.

Source: Index of Multiple Deprivation, ODPM, 2004



Housing

	April- June 1999 (£)	April-June 2004 (£)	% Increase
Craven	81,002	175,371	116.50
Hambleton	93,452	204,758	119.10
Harrogate	101,386	213,611	110.69
Richmondshire	81,819	163,097	99.34
Ryedale	80,822	178,282	120.58
Scarborough	60,531	137,672	127.44
Selby	68,309	166,222	143.33
York	77,758	161,009	107.06

The table opposite outlines the average house prices across the sub region. Scarborough has seen an increase of 127% between 1999 and 2004. Although this the second highest increase across the York and North Yorkshire, the average house price remains the lowest. However due to the low average income in the Scarborough district, housing affordability is therefore an important issue.

Source: HM Land Registry, Property Price



Community Safety

In 2003/04 there were 106 criminal offences per 1000 population took place across the Scarborough district. This is the second highest amount across the sub region, only York has a higher number of recorded offences. Ryedale had under half the number of offences take place within the same period.

	No. of Offences committed 02/03	Offences per 1,000 population 02/03	No. of Offences committed 03/04	Offences per 1,000 population 03/04
Craven	3,595	67	3,535	65.9
Hambleton	4,608	55	5,036	60
Harrogate	10,921	72.2	10,898	72
Richmondshire	2,550	54.2	2,589	48.3
Ryedale	2,610	51	2,318	46
Scarborough	11,351	107	11,230	106
Selby	6,618	80.7	6,666	87.2
York	25,872	142.8	29,384	162.3

Source: North Yorkshire Police configured by Safer York Partnership

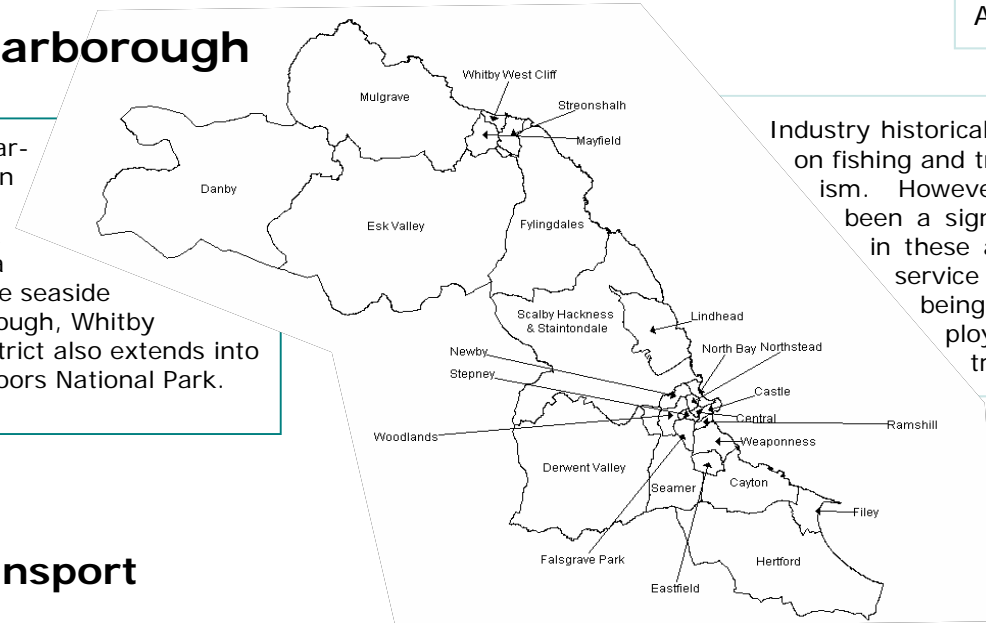
Social Exclusion

"A shorthand term for what can happen when people or areas suffer from a combination of linked problems such as unemployment, poor skills, low incomes, poor housing, high crime, bad health and family breakdown." (Social Exclusion Unit, 2000)

Autumn 2004

About Scarborough

The district of Scarborough covers an area of 817 sq km; it is mainly a large coastal area which includes the seaside towns of Scarborough, Whitby and Filey. The district also extends into the North York Moors National Park.



Industry historically has focused on fishing and traditional tourism. However there has been a significant decline in these areas with the service sector now being the main employer in the district.



Transport

30.65% of all households in the Scarborough district do not have a car or van, this is the highest percentage across York and North Yorkshire and is more than double the percentage of households in Hambleton and Richmondshire. Scarborough therefore has a lower percentage of households with two- four + cars or vans.

Nearly 50% of people from Scarborough travel to work by car, this is the lowest percentage across the sub-region, approximately a further 20% of people travel on foot which comparatively is the highest percentage in York and North Yorkshire. 5% of Scarborough's employees travel to work by bus, coach etc, again this is high in comparison to the other districts. These factors may be related to the lower levels of car ownership. Source: Census 2001.



Deprivation

The Indices of Deprivation 2004, measures deprivation at the Super Output Area (SOA) level.

In the overall results of the Index of Multiple Deprivation, the Scarborough district has 7 SOAs in the worst 10% of all SOAs across the country, all are within Scarborough town itself. In contrast there are 73 SOAs within the sub-region in the top 10%, Scarborough is the only district to have no SOAs in the top 10%.

There are a total of 490 SOAs in the sub-region, 70 in the Scarborough district, 23 of Scarborough's are in the bottom 10% of SOAs in York and North Yorkshire. These SOAs tend to be located in the town centres of Scarborough and Whitby in the wards of Castle, Central, Eastfield and Whitby West Cliff.

Further analysis will be outlined in different sections of this factsheet.

Key Fact

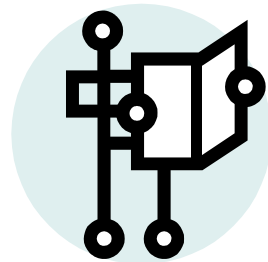
Scarborough has the second highest number of individuals accepted by their local authority as being homeless and in priority need within the sub-region.

Source: ONS, 2004

	IMD 2004	
	Bottom 10%	Top 10%
Craven	0	2
Hambleton	0	10
Harrogate	0	26
Richmondshire	0	2
Ryedale	0	1
Scarborough	7	0
Selby	0	6
York	0	26
NY Sub Region	7	73

Source: Index of Multiple Deprivation, ODPM,

The York and North Yorkshire Social Inclusion Network was formed in 2004 with the main aims of ensuring social inclusion is on the broader agenda, pooling information, research and data and sharing best practice. These Social Inclusion factsheets form part of the Network's role of providing a resource of key facts and figures. For more information on the Social Inclusion Network and access to further data and research on social inclusion please visit our webpages at http://www.ynypu.org.uk/social_inclusion/SIN.stm



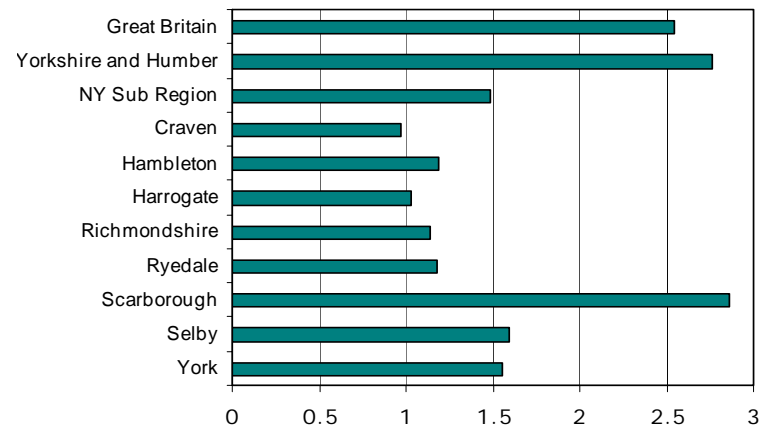
The York and North Yorkshire Partnership Unit acts as the secretariat for the York and North Yorkshire Social Inclusion Network their contact details are:
12 Clifton Moor Business Village
James Nicholson Link
Clifton Moor
York
YO30 4XG

Phone: 01904 477970
Fax: 01904 477977
Website: www.ynypu.org.uk



Employment

Unemployment Rate 2003



Source: Nomis 2004

Scarborough's employment rate in 2002/03 was the lowest in the sub-region at only 69.5%. This is lower than the other districts across the sub region and also lower than the regional employment rate.

The graph opposite highlights the unemployment rate in the Scarborough district. This is by far the highest in the sub-region and it is also higher than the Great Britain and regional average.

Key Fact

At the 2003 Local Election, Scarborough's turn out was the lowest across the sub-region at 31%. There is nearly a 10% difference between the turn out in Ryedale which was 40.7% and the turn out in Scarborough.

Source: University of Plymouth, Local Elections Handbooks 1998-2003

	Average Household Income 2003 (£)
NY Sub Region	26,263
Craven	26,330
Hambleton	28,744
Harrogate	29,676
Richmondshire	26,018
Ryedale	24,035
Scarborough	21,470
Selby	28,118
York	25,295

© Acxiom UK Ltd. All rights in the data contained in this data belong to Acxiom UK Ltd and may not be used or reproduced without the express permission of Acxiom UK Ltd.

Key Fact

Scarborough has 5 SOAs in the bottom 10% of all SOAs across the country in the Health domain. Across the sub region, only Harrogate has 1 SOA which is in the bottom 10% across the country.

Source: Index of Multiple Deprivation, ODPM, 2004

	% of population aged 16-60 with poor literacy	% of population aged 16-60 with poor numeracy
NY Sub Region	23.2%	22.1%
Craven	25.5%	23.9%
Hambleton	21.8%	20.2%
Harrogate	20.6%	19.2%
Richmondshire	22.3%	19.5%
Ryedale	27.4%	24.4%
Scarborough	26.6%	25.5%
Selby	22.3%	22.1%
York	23.0%	23.3%



Income

The average household income for the Scarborough district is £21,470 this is the lowest across the sub-region and lower than the South Yorkshire average income. There is over an £8000 difference between the average incomes for Harrogate, who has the highest average income and Scarborough.

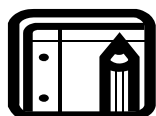
Source: Acxiom UK Ltd 2004

29% of Scarborough's full-time workers earn less than £13,000 per year; this is a similar percentage to the district's of Ryedale (28%) and Richmondshire (30%).

Source: North Yorkshire Household Survey 2000

When looking at the index for Income Deprivation Affecting Children, Scarborough has 7 SOAs which are within the worst 10% nationally. They are concentrated in the Scarborough town wards of Castle, Eastfield, North Bay and Woodlands. 3 of the same SOAs (out of a total of 4) are also in the worst 10% nationally for the Income Deprivation Affecting Older People index. However Scarborough also has 4 SOAs in the best 10% nationally for this index.

Source: Index of Multiple Deprivation, ODPM, 2004



Education

Within the Scarborough district 32% of people aged 16-74 have no qualifications, this is the highest percentage across the sub-region, in particular this is 10% higher than in the Harrogate district.

Similarly Scarborough has the lowest percentage of people aged 16-74 with a qualification level of NVQ 4/5, again this is nearly 10% lower than the Harrogate district.

Source: Census 2001.

The table to the right highlights that Scarborough has a high percentage of the population aged 16-60 who have poor literacy or numeracy.

Source: Basic Skills Agency 2003



Health

	Life Expectancy Female 2000-2002	Life Expectancy Male 2000-2002
England & Wales	80.57	75.88
Yorkshire & Humber	80.2	75.4
Craven	81.6	78
Hambleton	81.6	77.9
Harrogate	81.9	77.3
Richmondshire	82.0	76.8
Ryedale	82.4	78.1
Scarborough	80.9	76
Selby	80.4	77
York	81.5	76.9

The map below highlights Incapacity Benefit Claimants as a percentage of the population aged 16-65. The map clearly illustrates that there is a concentration of claimants within the Scarborough district compared to other districts. In particular 17.27% of people aged 16-65 in the Castle ward claim Incapacity Benefit and the figure is 14.39% for the Eastfield ward. This trend agrees with the high percentage of people with a long term illness within the district.

Key Fact

Scarborough's teenage pregnancy rate in 2000 for 15-17 year olds exceeded the sub-regional, regional and national averages.

Source: ONS, 2001



Population

The population of Scarborough is 106,243; this is the third highest population in the York and North Yorkshire sub region. 60% of the population live in the urban areas of Scarborough, Whitby and Filey. Census figures show that Scarborough has the highest percentage of population who are aged 65-84.

The ethnic make up of the Scarborough district is predominantly white at around 99.03% which is much higher than the average for the whole of England and Wales which is 91.3%

2001 Census figures outline that there are 2770 lone parent households in the Scarborough district, which make up 5.93% of all households.

This is the highest percentage of lone parent households within York and North Yorkshire, however this is still less than the National and Regional averages.

62.81% of Scarborough's male lone parents work either full or part time, 44.84% of Scarborough's female lone parents also work.

Source: Census 2001.

22,942 people in the Scarborough district have a limiting long-term illness, this is 21.59% of the district's population and is around 5% higher than the other districts.

2001 Census figures highlight that there are 11,304 people who provide unpaid care in the Scarborough district, which makes up 10.63% of all people. 23.08% of these unpaid carers provide care for 50+ hours per week, this is again around 5% higher than the other districts and supports the fact that there are a higher number of people with serious long term illnesses.

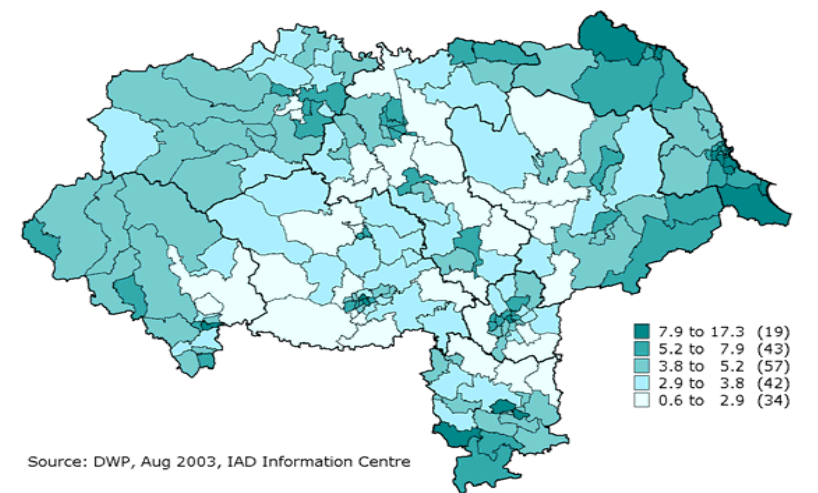
10.38% of all people in the Scarborough district perceive their health as 'not good'. This is the highest percentage across the sub region and this corresponds with the high levels of long-term illness in the district. Consequently, a lower percentage 24.18% perceive their health as 'fairly good' and 65.44% perceive their health as 'good'.

Source: Census 2001

Life Expectancy for Scarborough district residents is low in comparison to the other districts in the sub region. Female life expectancy is the second lowest in the sub region at 80.9, whereas male life expectancy is the lowest at 76. This life expectancy is just slightly higher than the national and regional figures.

Source: ONS, 2003

Incapacity Benefit Claimants as a percentage of the total population aged 16-65 by ward



Source: DWP, Aug 2003, IAD Information Centre

