



Housing

	April– June 1999 (£)	April-June 2004 (£)	% Increase
Craven	81,002	175,371	116.50
Hambleton	93,452	204,758	119.10
Harrogate	101,386	213,611	110.69
Richmondshire	81,819	163,097	99.34
Ryedale	80,822	178,282	120.58
Scarborough	60,531	137,672	127.44
Selby	68,309	166,222	143.33
York	77,758	161,009	107.06

The table above outlines the average house prices across the sub-region. York has seen an increase of 107.06% between 1999 and 2004. This is the second lowest increase across the sub-region however the average house price is still high and now stands at £161,009. The issue of housing affordability is therefore key to York.

Source: HM Land Registry, Property Price

The 2002 Housing Needs Survey highlighted a net affordable housing requirement for 954 units per year during the period to 2007. Furthermore 409 Households in York were accepted as homeless in 2002/03.

Source: City of York Council, Homelessness Review and Strategy 03-08

Key Fact

York has 18 SOAs which are in bottom 10% of SOAs nationally for the Crime index, 2 of these SOAs are in the bottom 1%. These SOAs are situated in the wards of Clifton and Hull Road, however in contrast there 19 SOAs in York which are in the top 10% nationally.

Source: Index of Multiple Deprivation, ODPM, 2004



Community Safety

In 2003/04 162.3 criminal offences per 1000 population took place across the York district, this is an increase from 2002/03. and is the highest number of offences across the sub region. There is an obvious relationship between rurality and the crime rate as the Ryedale district experienced a third of the offences which took place in York within the same period of time.

Source: North Yorkshire Police configured by Safer York Partnership

	No. of Offences committed 02/03	Offences per 1,000 population 02/03	No. of Offences committed 03/04	Offences per 1,000 population 03/04
Craven	3,595	67	3,535	65.9
Hambleton	4,608	55	5,036	60
Harrogate	10,921	72.2	10,898	72
Richmondshire	2,550	54.2	2,589	48.3
Ryedale	2,610	51	2,318	46
Scarborough	11,351	107	11,230	106
Selby	6,618	80.7	6,666	87.2
York	25,872	142.8	29,384	162.3

Overview of Social Exclusion in York

Social Exclusion

"A shorthand term for what can happen when people or areas suffer from a combination of linked problems such as unemployment, poor skills, low incomes, poor housing, high crime, bad health and family breakdown." (Social Exclusion Unit, 2000)

Winter 2004

About York

The York local authority area covers 272 sq km, this comprises of the urban centre of York and a number of small villages. The city is the largest urban conurbation across the sub-region with the highest population density. It borders the districts of Ryedale, Hambleton, Selby, Harrogate and the East Riding of Yorkshire.



Industry in York has traditionally focused on rail, food and drink and other heavy industry. However, there has been a recent shift towards science and technology through the Science City York initiative. Tourism and financial services also remain central to York's economy.

Key Fact

The largest ethnic minority group within York as recorded by the Census is Chinese, however evidence suggests that there are also a significant number of travelling families, who are not recorded. There are approximately 200 families within the York area who either live on one of the three traveller sites across the city or are transient travellers.

Source: York Travellers Trust



Transport

York has good transport links with regular train services across the country. There are a number of park and ride sites which aim to reduce traffic congestion within the city and an established bus network.

Consequently census figures highlight that there is a lower percentage of people who travel to work by car (48.18%), this is the lowest percentage across the sub-region. Therefore a higher percentage of people travel by foot, bus or bicycle. There are three times as many people who travel to work by bicycle than any of the other districts.

Source: Census 2001.



Deprivation

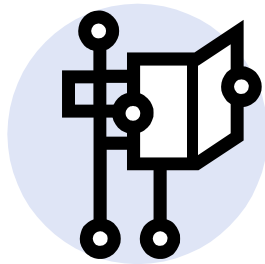
The Indices of Deprivation 2004, measures deprivation at the Super Output Area (SOA) level. In the overall results of the Index of Multiple Deprivation, York has 26 SOAs in the top 10% of SOAs nationally.

There are a total of 490 SOAs in the sub region, 16 of York's SOAs are in the bottom 10% of SOAs in York and North Yorkshire. These SOAs are situated in the wards of Acomb, Clifton, Guildhall, Heworth, Holgate, Hull Road, Micklegate, and Westfield. However in contrast there are also 17 SOAs in the top 10% of SOAs across the sub-region, these are situated in Bishopthorpe, Derwent, Dringhouses and Woodthorpe, Haxby and Wigginton, Heworth Without, Hull Road, Rural West York, Strensall and Wheldrake. Within the Hull Road ward there are SOAs in the both top and bottom 10%, this highlights the diversity of the York as it experiences both prosperity and deprivation.

Further analysis of the Indices of Deprivation 2004 will be outlined in different sections of this factsheet.

	IMD 2004	
	Bottom 10% Nationally	Top 10% Nationally
Craven	0	2
Hambleton	0	10
Harrogate	0	26
Richmondshire	0	2
Ryedale	0	1
Scarborough	7	0
Selby	0	6
York	0	26
NY Sub Region	7	73

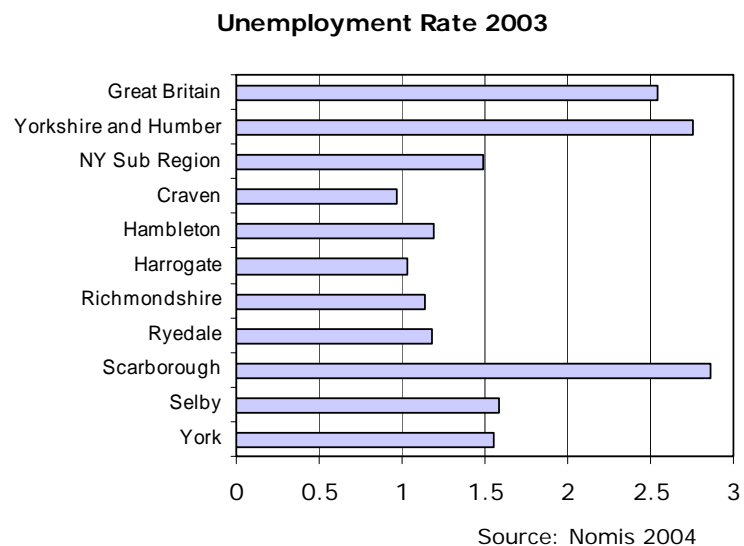
Source: Index of Multiple Deprivation, ODPM, 2004



The York and North Yorkshire Partnership Unit acts as the secretariat for the York and North Yorkshire Social Inclusion Network their contact details are:
12 Clifton Moor Business Village
James Nicholson Link
Clifton Moor
York
Y030 4XG

Phone: 01904 477970
Fax: 01904 477977
Website: www.ynypu.org.uk

Employment



Income

The average household income for York district is £25,295 this is one of lowest incomes across the sub-region and is lower than the sub-regional average. However it is still just under £4000 more than the average for the Scarborough district, which is the lowest in the sub-region.

Source: Acxiom UK Ltd 2003

York has the lowest percentage of full-time workers who earn less than £13,000 per year at only 17%, this is 12% less than the figure for the Scarborough district.

Source: North Yorkshire Household Survey 2000

Analysis of the Income Deprivation affecting Children Index, outlines that there are 6 SOAs in York which are in the bottom 10% of SOAs nationally. They are situated in the wards of Acomb, Clifton, Fishergate, Heworth and Hull Road. However York also has 16 SOAs in the best 10% nationally for this index, which highlights the diversity of income deprivation in York.

Source: Index of Multiple Deprivation, ODPM, 2004

Education

Within York 25% of people aged 16-74 have no qualifications, this is lower than both the sub-regional and regional averages. There is also a high percentage (24%) of people who are educated to NVQ level 4/5, this is higher than the sub-regional and regional averages.

Source: Census 2001

The table to the right outlines the percentage of the population who have either poor literacy or numeracy skills. York compares well to the other districts, with literacy and numeracy levels similar to the sub-regional averages.

Source: Basic Skills Agency 2003

	% of population aged 16-60 with poor literacy	% of population aged 16-60 with poor numeracy
NY Sub Region	23.2%	22.1%
Craven	25.5%	23.9%
Hambleton	21.8%	20.2%
Harrogate	20.6%	19.2%
Richmondshire	22.3%	19.5%
Ryedale	27.4%	24.4%
Scarborough	26.6%	25.5%
Selby	22.3%	22.1%
York	23.0%	23.3%

York's employment rate in 2002/03 was 79.10% This is higher than both the national and regional employment rates.

Source: LFS, 2002/03

The graph opposite highlights the unemployment rate in York, although lower than the Scarborough and Selby rates, it is slightly higher than the sub-regional rate.

Source: Nomis 2004

Key Fact

The DEFRA rural definition states that 17.3% of people in York live in 'less sparse' rural areas. This is compared to an average of 18% of people who live in 'less sparse' rural areas across the region.

Source: DEFRA Rural Evidence Hub 2004

	Average Household Income 2003 (£)
NY Sub Region	26,263
Craven	26,330
Hambleton	28,744
Harrogate	29,676
Richmondshire	26,018
Ryedale	24,035
Scarborough	21,470
Selby	28,118
York	25,295

© Acxiom UK Ltd. All rights in the data contained in this data belong to Acxiom UK Ltd and may not be used or reproduced without the express permission of Acxiom UK Ltd.

Key Fact

York's teenage pregnancy rate in 2000 for 15-17 year olds, was the second highest across the sub-region. This is higher than the North Yorkshire County average however lower than the national and regional averages.

Source: ONS, 2001

Health

	Life Expectancy Female 2000-2002	Life Expectancy Male 2000-2002
England & Wales	80.57	75.88
Yorkshire & Humber	80.2	75.4
Craven	81.6	78
Hambleton	81.6	77.9
Harrogate	81.9	77.3
Richmondshire	82.0	76.8
Ryedale	82.4	78.1
Scarborough	80.9	76
Selby	80.4	77
York	81.5	76.9

The map below highlights Incapacity Benefit claimants as a percentage of the total population aged 16-65. The map clearly illustrates that there is a concentration of Incapacity Benefit claimants in some areas of central York. In particular 7.77% of people aged 16-65 within the Westfield ward claim Incapacity Benefit and 6.89% of people from the Clifton ward.

Key Fact

York has an unauthorised absence rate for primary schools of 0.45, which is the same rate as the regional average but higher than the national average. The secondary school rate stands at 1.14. This is lower than the regional average but again higher than the national average.

Source: DFES Statistical Releases: Pupil Absence in Schools

Population

The 2001 Census gives the total population within York as 181,094, this is the highest population for any of the districts across the sub-region. The population is spread between the urban centre of York and a number of surrounding villages.

York has the highest percentage of ethnic minorities within its population, compared to the other districts. Individuals from ethnic minorities make up approximately 2.2% of the total population, however the white population is higher than the national average which is 92.1%.

5.3% of all households in the York are made up of lone parents households. This is the second highest amount across the sub-region, however it is lower than the national and regional averages. Furthermore York has the lowest percentage of male lone parents at 9.49%. 70.54% of York's male lone parents work either full or part time and 52.8% of York's female lone parents work.

Source: Census 2001.

30,064 people in York have a limiting long-term illness, this is 16.60% of the district's population and is around average in comparison to the other districts.

2001 Census figures highlight that there are 17,009 people who provide unpaid care in York, which makes up 9.39% of all people. 73.36% of carers provide 1-19 hours of care per week.

8% of all people in York perceive their health as 'not good'. This is the third highest percentage across the sub-region. Consequently, 21.74% of people in York perceive their health as 'fairly good' and 70.26% perceive their health as 'good'.

Source: Census 2001

Life Expectancy for York residents compares well to the other districts in the sub-region. Both female and male life expectancy exceeds the national and regional averages.

Source: ONS, 2003

Key Fact

At the 2003 Local Election, the turn out for York was 37.2%, this is just higher than the sub-regional average.

Source: University of Plymouth, Local Elections Handbooks 1998-2003

Incapacity Benefit Claimants as a percentage of the total population aged 16-65 by ward

