

## National Picture

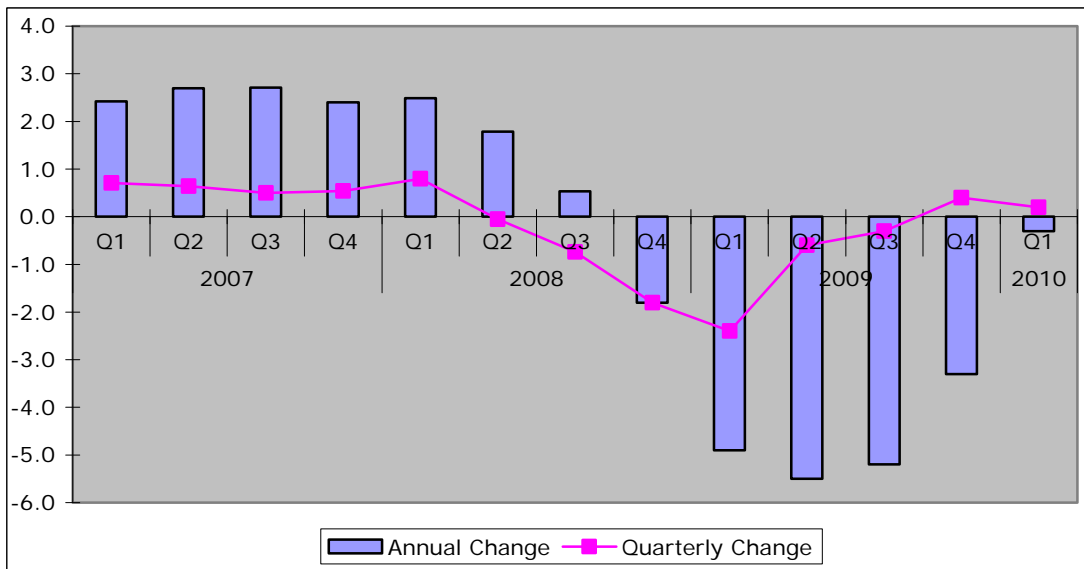
Key Indicators	February 2010	March 2010*	Change
Inflation figures - CPI	3.0	3.4	0.4
Inflation figures - RPI	3.7	4.4	0.7
New Businesses - VAT Registrations	15,042	19,886	4,844
			32.2%
VAT De-registrations	17,394	18,969	1,575
			9.1%

Source: ONS, UK Trade Info

\* Provisional

- ◆ Provisional estimates suggest GDP increased by 0.2% in Q1 of 2010.

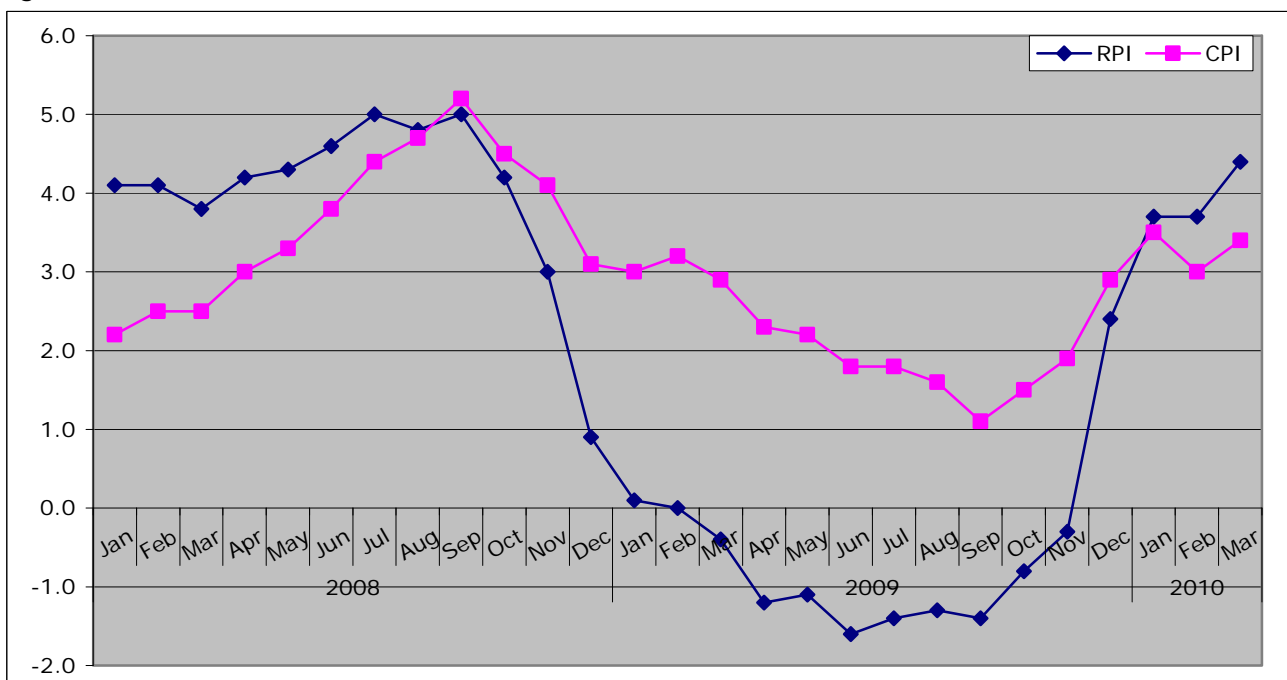
Figure: Change to GDP



Source: ONS

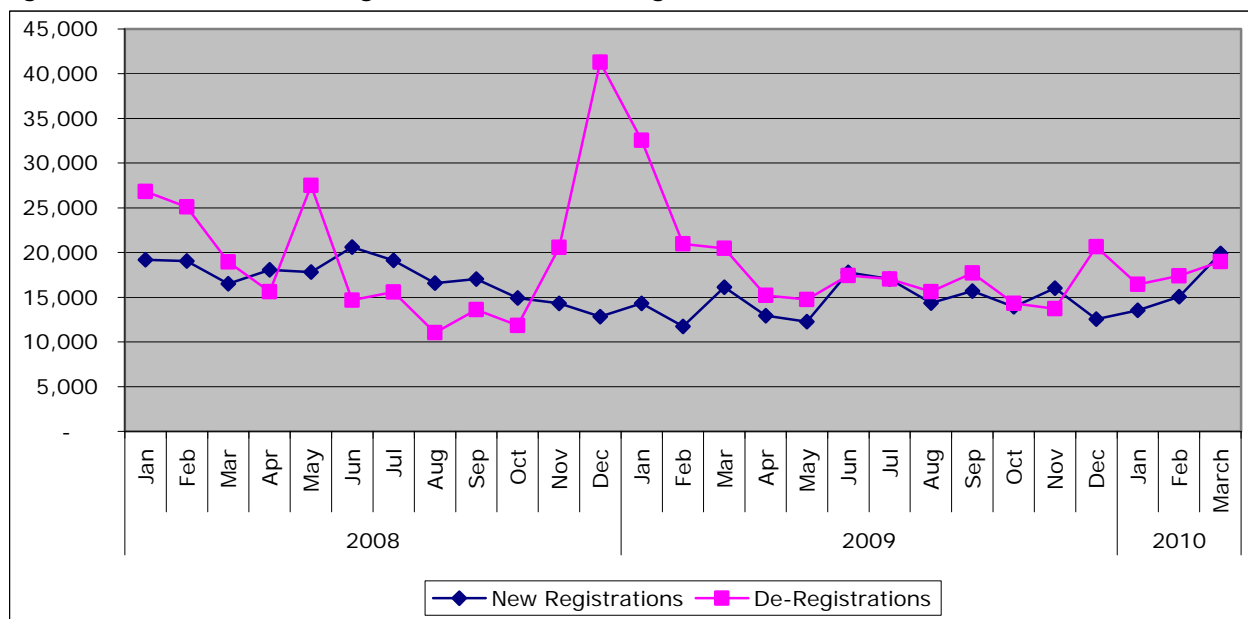
\* Data is provisional

Figure: Inflation Trends



Source: ONS

Figure 1: New Business Registrations and De-Registrations



Source: UK Trade Info

## Local Picture

### Labour Market

#### Confirmed Job losses - March / April 2010

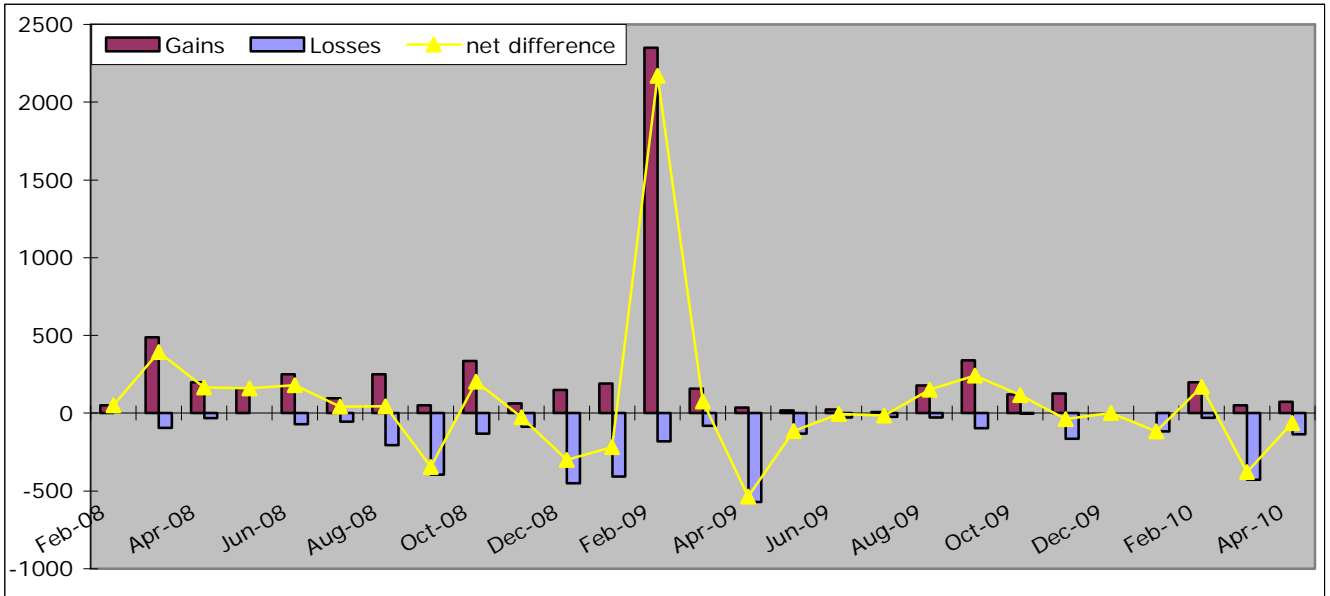
Company	Location	No. jobs	Type of Service
Harvilles	York	-20	Hotels and Restaurants
Fenwicks	York	-11	Distribution and Retail
Adams Kids	Scarborough	-6	Distribution and Retail
Homeloan Management Ltd	Skipton	-42	Financial Services
Jarvis	York	-350	Transport and Communications
Skipton Building Society	Scarborough	-136	Financial Services
<b>Total</b>		<b>-20</b>	

#### Confirmed Job Gains - March / April 2010

Company	Location	No. Jobs	Type of Service
Whitakers Chocolates	Skipton	25	Manufacturing Food, Drink and Tobacco
Perry Slingsby Systems	Kirkbymoorside	25	Business Services
The Yorkshire Linen Company	Harrogate		Distribution & retail
Nespresso (Nestle)	York	73	Manufacturing Food, Drink and Tobacco
<b>Total</b>		<b>123</b>	

Source: Yorkshire Futures Monthly jobs database

Figure: Jobs/Gains and net difference



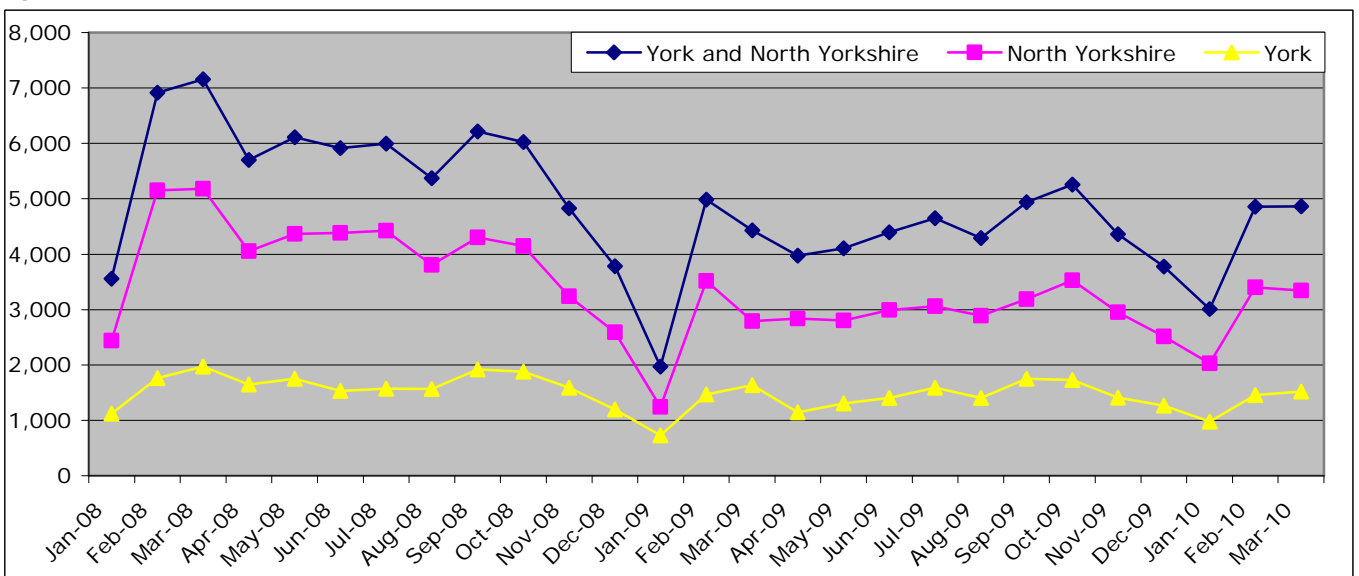
Source: Yorkshire Forward jobs database

**Job Centre Plus – notified job vacancies**

	March 2010	Monthly Change		Annual Change	
England	284,742	18,772	7.1%	65,797	30.1%
Yorkshire and Humber	30,205	2,309	8.3%	6,478	27.3%
York and North Yorkshire	4,862	3	0.1%	433	9.8%
North Yorkshire	3,344	-61	-1.8%	552	19.8%
York	1,518	64	4.4%	-119	-7.3%
Craven	256	-20	-7.2%	29	12.8%
Hambleton	392	20	5.4%	122	45.2%
Harrogate	1,013	-154	-13.2%	86	9.3%
Richmondshire	268	64	31.4%	90	50.6%
Ryedale	232	-13	-5.3%	-7	-2.9%
Scarborough	559	-116	-17.2%	75	15.5%
Selby	625	158	33.8%	159	34.1%

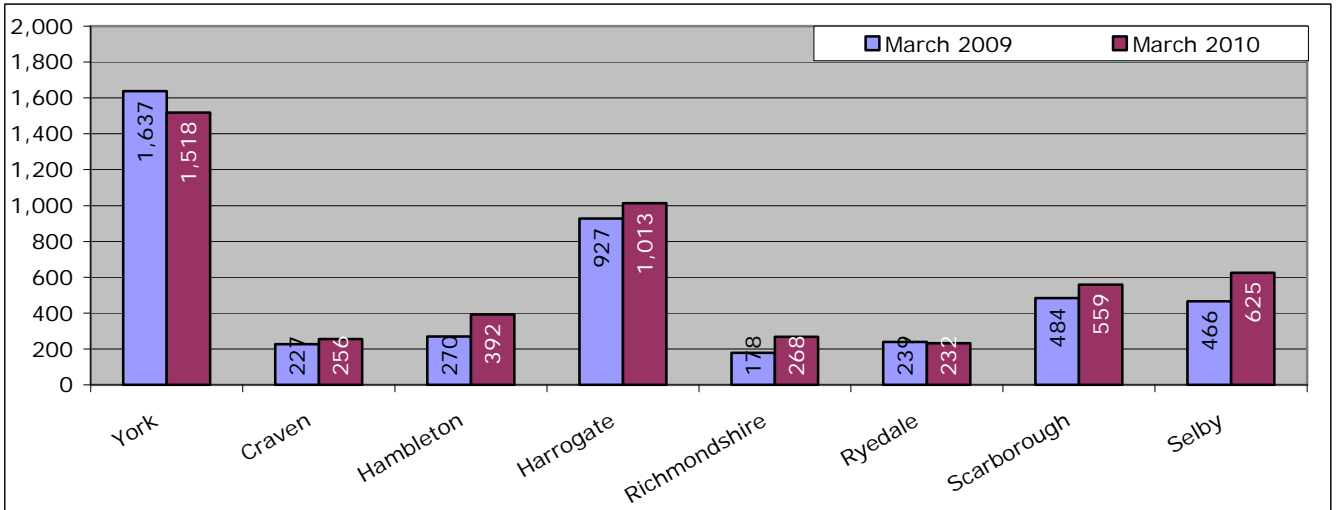
Source: Nomis

Figure: Number of vacancies trend



Source: Nomis

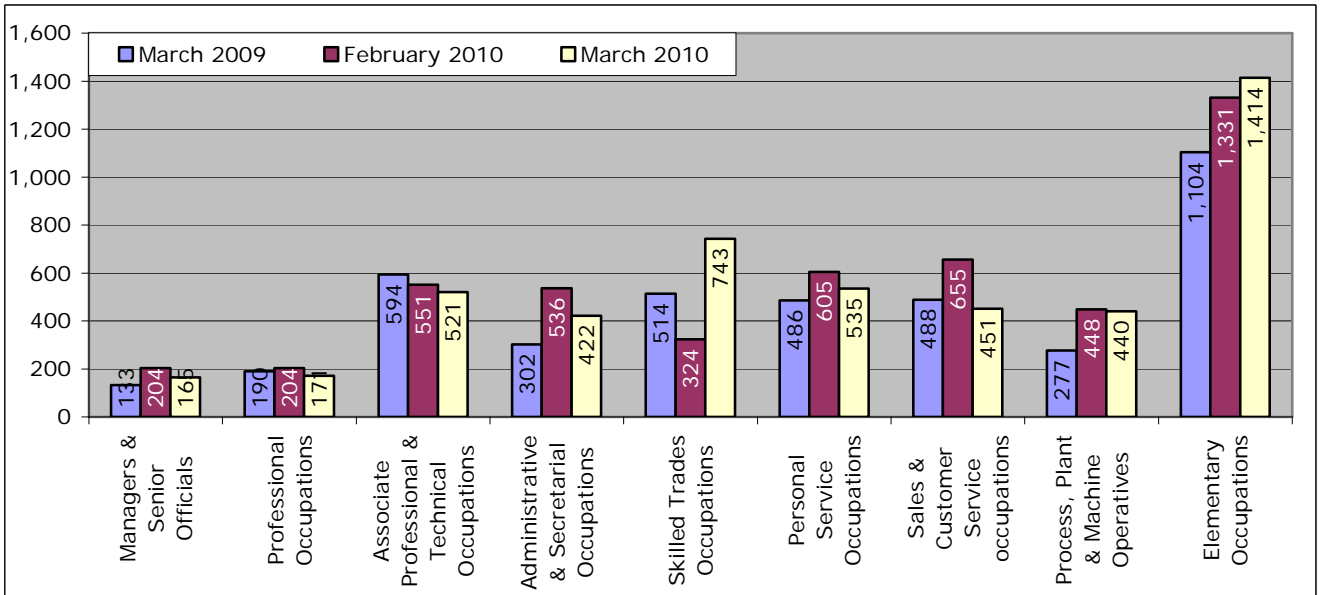
Figure: Number of Vacancies, Year on Year comparison



Source: Nomis

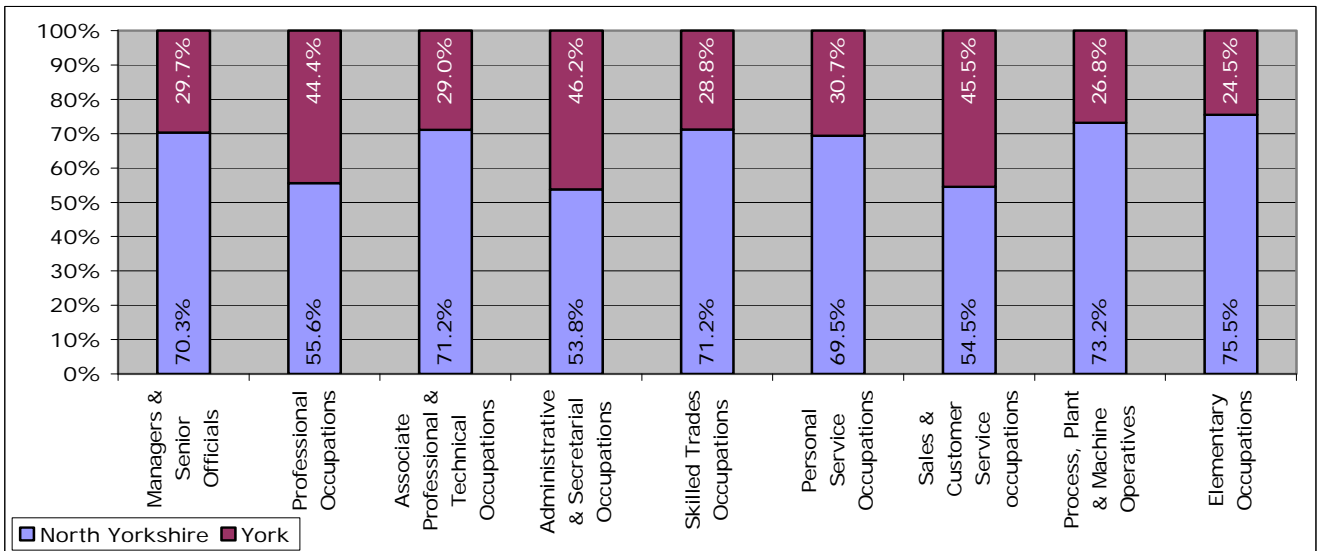
### Vacancies by Occupation

Figure: Share of vacancies by occupation, York and North Yorkshire, year on year comparison



Source: Nomis

Figure: Distribution of vacancies by occupation between North Yorkshire & York, February 2010



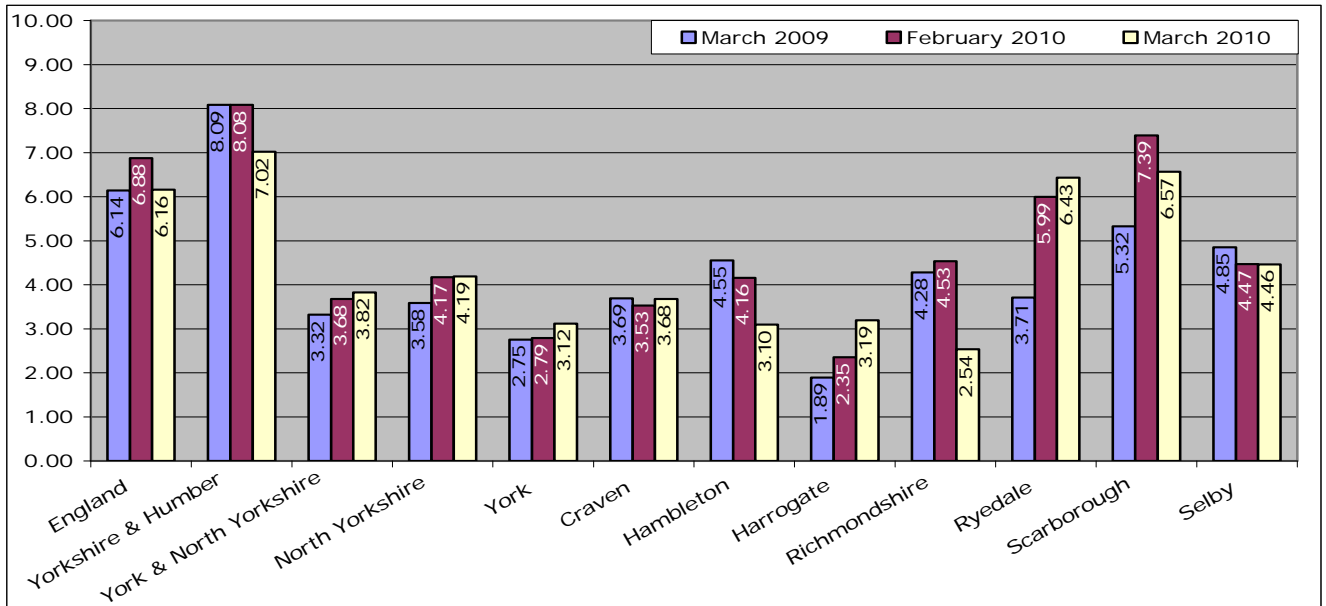
Source: Nomis

### Number of Claimants to Notified Vacancies ratio

	March 2009	February 2010	March 2010	Annual Change	Monthly Change
England	6.14	6.88	6.16	0.01	-0.72
Yorkshire and Humber	8.09	8.08	7.02	-1.06	-1.06
York and North Yorkshire	3.32	3.68	3.82	0.51	0.15
North Yorkshire	3.58	4.17	4.19	0.61	0.02
York	2.75	2.79	3.12	0.37	0.32
Craven	3.69	3.53	3.68	-0.01	0.15
Hambleton	4.55	4.16	3.10	-1.46	-1.06
Harrogate	1.89	2.35	3.19	1.30	0.84
Richmondshire	4.28	4.53	2.54	-1.75	-2.00
Ryedale	3.71	5.99	6.43	2.73	0.44
Scarborough	5.32	7.39	6.57	1.24	-0.83
Selby	4.85	4.47	4.46	-0.39	0.00

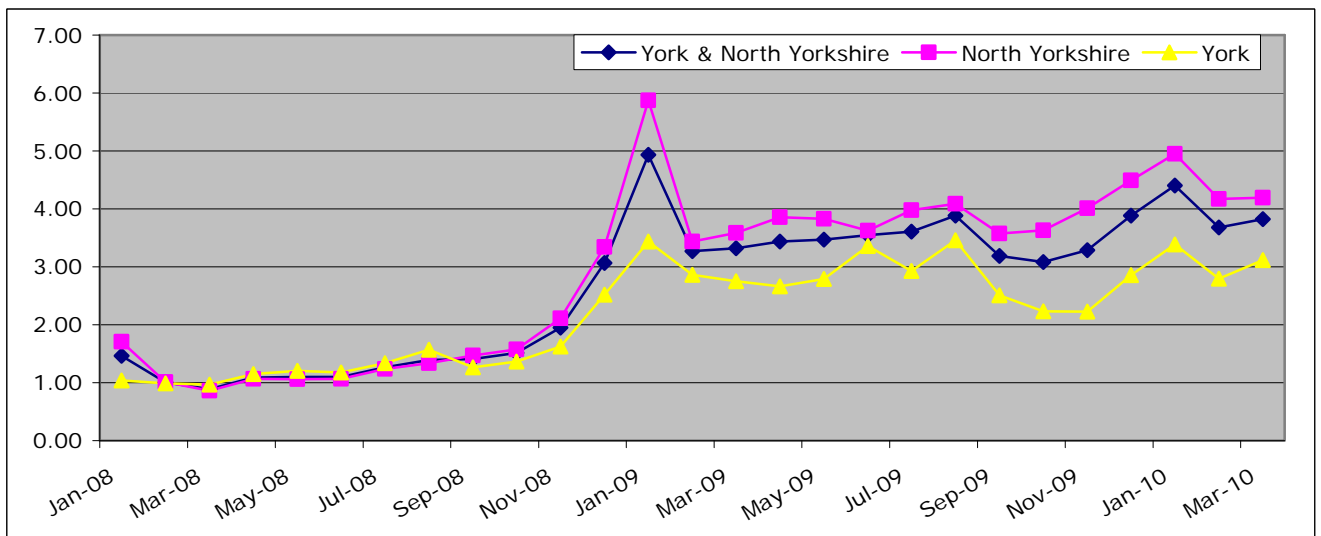
Source: Nomis

Figure: Number of Claimants to Notified Vacancies, Year on Year comparison



Source: Nomis

Figure: Number of Claimants to Notified Vacancies ratio trend



Source: Nomis

## Unemployment

### Total Claimant Count

	March 2010	Annual Change	Annual % Change	Monthly Change	Monthly % Change
England	1,333,659	60,801	4.8	-36,626	-2.7
Yorkshire and Humber	159,963	11,590	7.8	-4,674	-2.8
York and North Yorkshire	14,408	823	6.1	-805	-5.3
North Yorkshire	10,402	404	4.0	-677	-6.1
York	4,006	419	11.7	-128	-3.1
Craven	721	49	7.3	-41	-5.4
Hambleton	1,139	-72	-5.9	-75	-6.2
Harrogate	2,153	123	6.1	-169	-7.3
Richmondshire	596	-72	-10.8	-25	-4.0
Ryedale	830	70	9.2	-63	-7.1
Scarborough	3,231	297	10.1	-222	-6.4
Selby	1,732	9	0.5	-82	-4.5

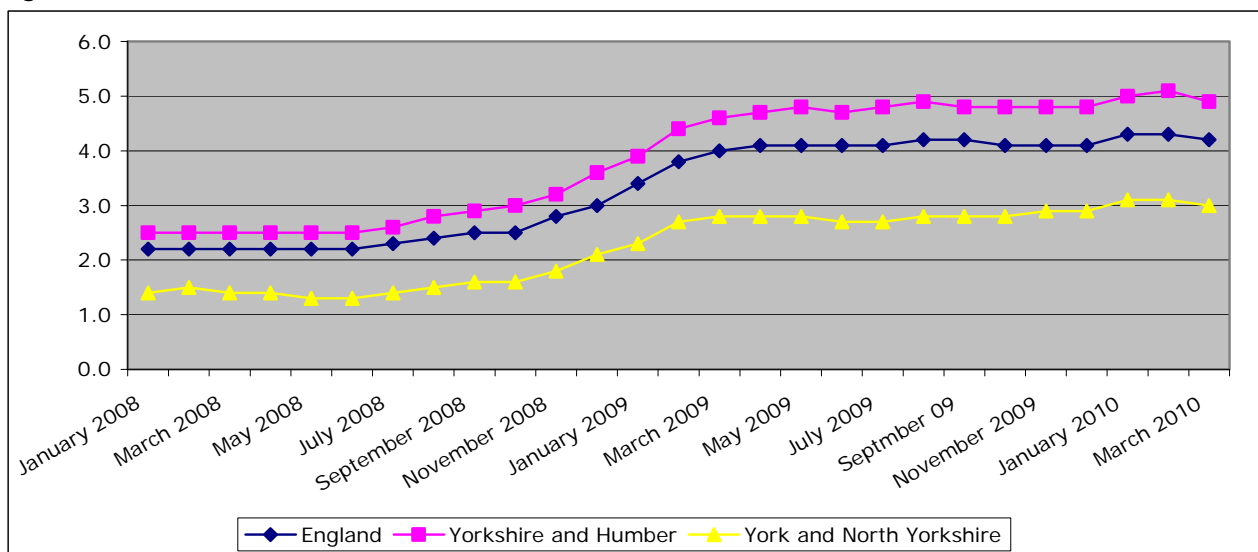
Source: Nomis

### Claimant Count Rate

	England	Yorkshire and Humber	York and North Yorkshire
March 2009	4.0	4.6	2.8
April 2009	4.1	4.7	2.8
May 2009	4.1	4.8	2.8
June 2009	4.1	4.7	2.7
July 2009	4.1	4.8	2.7
August 2009	4.2	4.9	2.8
September 2009	4.2	4.8	2.8
October 2009	4.1	4.8	2.8
November 2009	4.1	4.8	2.9
December 2009	4.1	4.8	2.9
January 2010	4.3	5.0	3.1
February 2010	4.3	5.1	3.1
March 2010	4.2	4.9	3.0

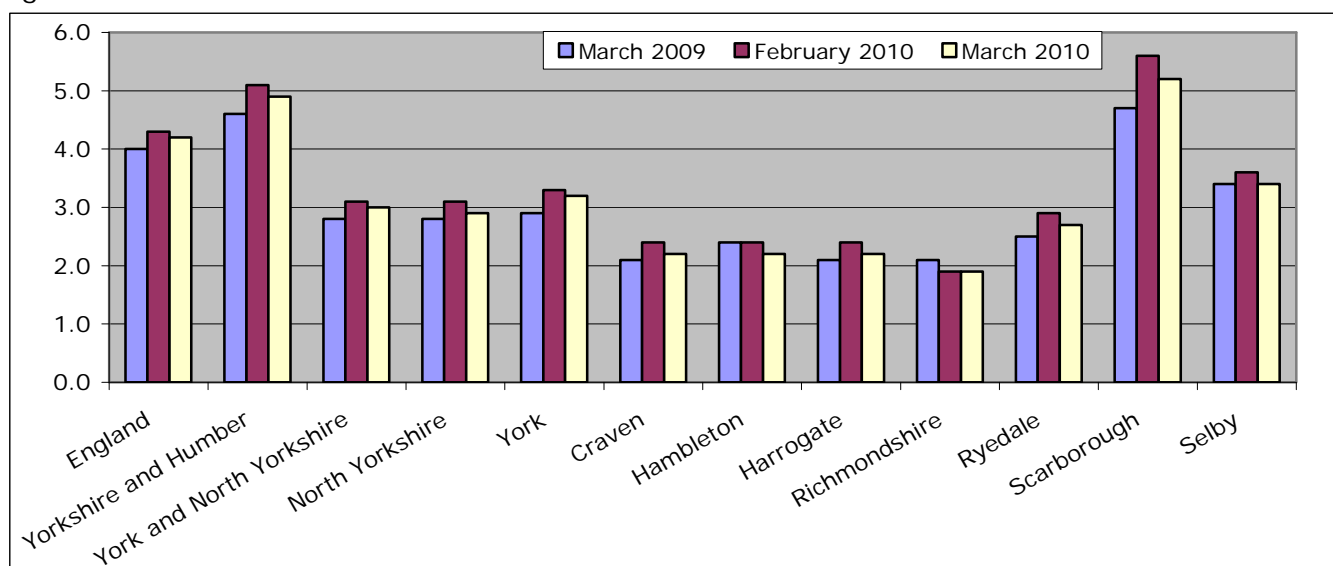
Source: Nomis

Figure: Claimant Count Rate



Source: Nomis

Figure: Claimant Count Rate



Source: Nomis

### Total Claiming for Over 12 months

	March 2010	Annual change	Annual % change	Monthly Change	Monthly % change
England	210,560	113,390	116.7	6,045	3.0
Yorkshire and Humber	24,975	14,530	139.1	710	2.9
York and North Yorkshire	2,080	1,395	203.6	100	5.1
North Yorkshire	1,515	1,025	209.2	70	4.8
York	565	370	189.7	25	4.6
Craven	80	55	220.0	10	14.3
Hambleton	160	100	166.7	5	3.2
Harrogate	305	215	238.9	15	5.2
Richmondshire	70	45	180.0	5	7.7
Ryedale	140	90	180.0	5	3.7
Scarborough	465	295	173.5	20	4.5
Selby	290	225	346.2	10	3.6

Source: Nomis

### Total claiming for over 6 months

	March 2010	Actual Annual Change	Annual percentage change	Actual Monthly Change	Monthly Percentage change
England	490,075	205,350	72.1	6,950	1.4
Yorkshire and Humber	59,260	25,420	75.1	950	1.6
York and North Yorkshire	4,825	2,480	105.8	130	2.8
North Yorkshire	3,475	1,775	104.4	90	2.7
York	1,350	705	109.3	40	3.1
Craven	240	135	128.6	25	11.6
Hambleton	350	160	84.2	-15	-4.1
Harrogate	740	400	117.6	5	0.7
Richmondshire	160	60	60.0	-10	-5.9
Ryedale	280	145	107.4	5	1.8
Scarborough	1,100	530	93.0	85	8.4
Selby	605	350	137.3	-5	-0.8

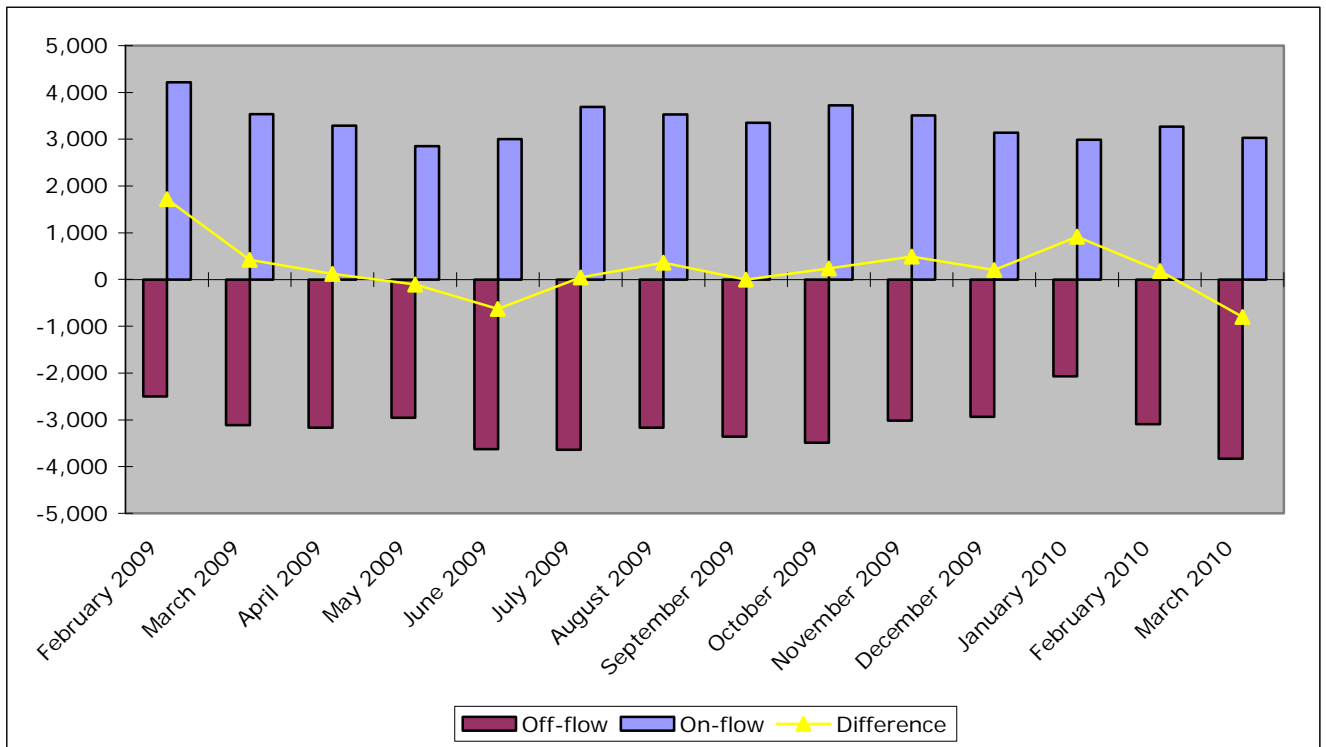
Source: Nomis

### Claimant Count On-Flow and Off-Flow in York and North Yorkshire

	Off-flow	On-flow	Difference
February 2009	-2,499	4,220	1,721
March 2009	-3,115	3,535	420
April 2009	-3,167	3,288	121
May 2009	-2,956	2,850	-106
June 2009	-3,630	3,003	-627
July 2009	-3,641	3,687	46
August 2009	-3,169	3,532	363
September 2009	-3,357	3,355	-2
October 2009	-3,487	3,722	235
November 2009	-3,018	3,511	493
December 2009	-2,936	3,137	201
January 2010	-2,069	2,986	917
February 2010	-3,091	3,272	181
March 2010	-3,832	3,031	-801

Source: Nomis

### Claimant Count On flow and Off Flow, York and North Yorkshire



Source: Nomis

### Claimant Count Off-Flow

	March 2010	Annual % change	Monthly % change
England	301,427	19.1	2.8
Yorkshire and Humber	34,815	20.5	7.7
York and North Yorkshire	3,832	23.0	24.0
North Yorkshire	2,811	22.0	26.5
York	1,020	25.9	17.5
Craven	190	7.3	5.0
Hambleton	341	42.1	22.7
Harrogate	635	23.3	27.3
Richmondshire	195	36.4	25.8
Ryedale	224	41.8	40.9
Scarborough	790	2.7	35.0
Selby	437	44.7	19.7

Source: Nomis

### Claimant Count On-Flow

	March 2010	Annual % change	Monthly % change
England	264,576	-16.0	-10.9
Yorkshire and Humber	30,238	-12.9	-10.9
York and North Yorkshire	3,031	-14.3	-7.4
North Yorkshire	2,131	-15.8	-9.2
York	900	-10.4	-2.7
Craven	147	-22.2	-13.5
Hambleton	270	-8.2	0.4
Harrogate	451	-26.2	-15.9
Richmondshire	168	-5.1	18.3
Ryedale	164	-12.3	-11.8
Scarborough	562	-13.9	-10.2
Selby	369	-11.9	-11.5

Source: Nomis

### Ratio of Claimant Count Off-flow to On-flow

	Mar-09	Feb-10	Mar-10	Annual Change	Monthly Change
England	1.25	1.01	0.88	-0.37	-0.13
Yorkshire and Humber	1.20	1.05	0.87	-0.33	-0.18
York and North Yorkshire	1.13	1.06	0.79	-0.34	-0.27
North Yorkshire	1.10	1.06	0.76	-0.34	-0.30
York	1.24	1.07	0.88	-0.36	-0.18
Craven	1.07	0.94	0.77	-0.29	-0.17
Hambleton	1.23	0.97	0.79	-0.43	-0.18
Harrogate	1.19	1.07	0.71	-0.48	-0.36
Richmondshire	1.24	0.92	0.86	-0.38	-0.05
Ryedale	1.18	1.17	0.73	-0.45	-0.44
Scarborough	0.85	1.07	0.71	-0.14	-0.36
Selby	1.39	1.14	0.84	-0.54	-0.30

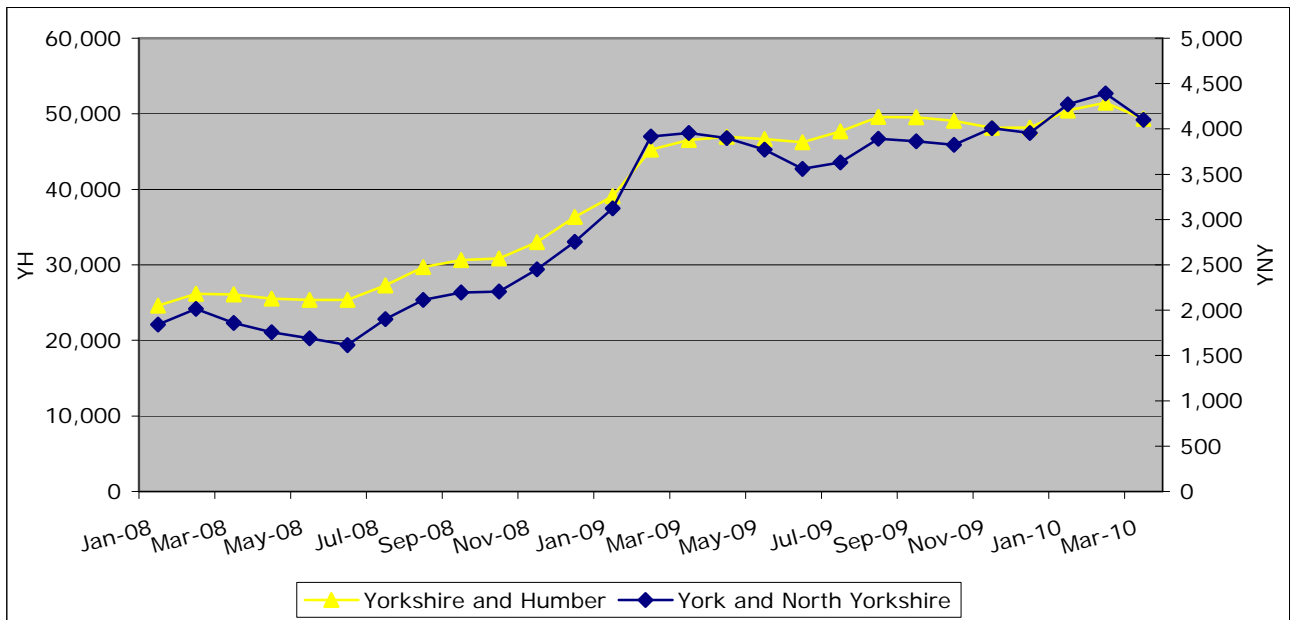
Source: Nomis

### Claimant Count 18-24 year olds

	March 2010	Annual Change	Annual % Change	Monthly Change	Monthly % Change
England	386,445	6,925	1.8	-15,805	-3.9
Yorkshire and Humber	49,330	2,820	6.1	-2,145	-4.2
York and North Yorkshire	4,100	145	3.7	-290	-6.6
North Yorkshire	2,960	70	2.4	-230	-7.2
York	1,140	80	7.5	-60	-5.0
Craven	190	10	5.6	-15	-7.3
Hambleton	345	-45	-11.5	-45	-11.5
Harrogate	495	10	2.1	-60	-10.8
Richmondshire	205	-15	-6.8	10	5.1
Ryedale	255	40	18.6	-25	-8.9
Scarborough	970	80	9.0	-80	-7.6
Selby	500	-10	-2.0	-15	-2.9

Source: Nomis

Figure: 18 – 24 yr old claimants



Source: Nomis

## Business Activity

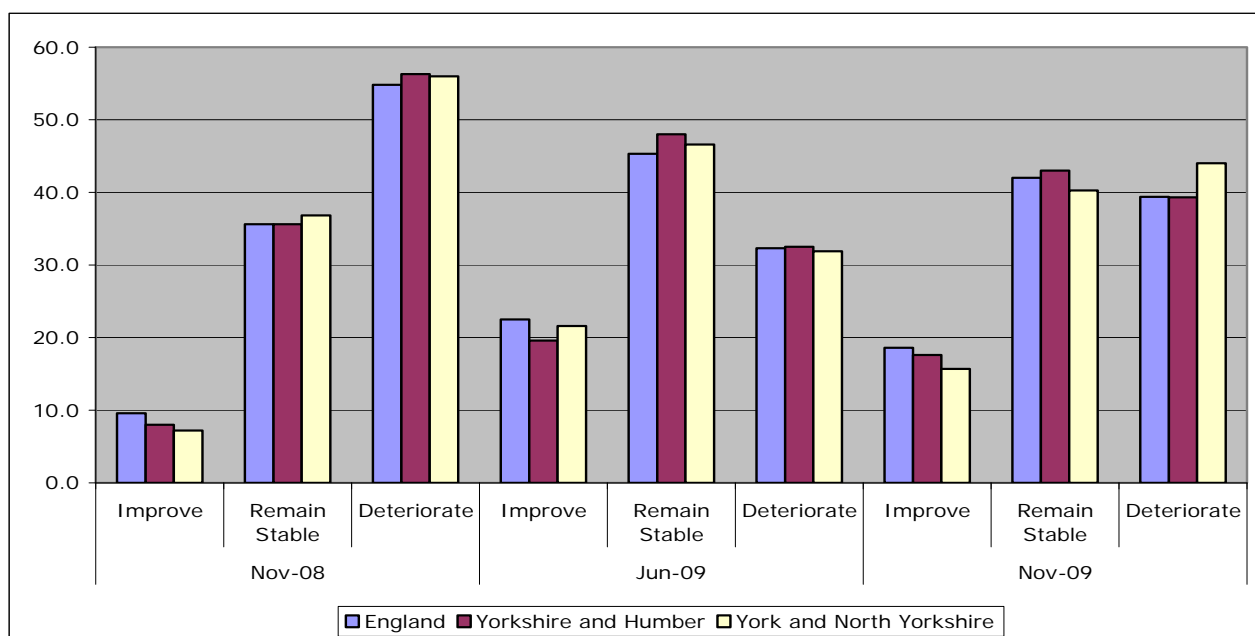
### Business Confidence

The National Business Survey is a large scale research project conducted by Ipsos Mori on behalf of the RDA Network and Invest Northern Ireland. It explores perceptions of businesses across England and Northern Ireland, on current and recent business conditions as well as looking forward to potential issues and views on projected change over the coming months. The survey asks a series of questions on business confidence, a number of which are presented here.

Over the next 12 months do you expect the business climate in which your business operates to generally improve, remain stable, or deteriorate?

	Nov-08			Jun-09			Nov-09		
	Improve	Remain Stable	Deteriorate	Improve	Remain Stable	Deteriorate	Improve	Remain Stable	Deteriorate
England	9.6	35.6	54.8	22.5	45.3	32.3	18.6%	42.0%	39.4%
Yorkshire and Humber	8.0	35.6	56.3	19.6	48.0	32.5	17.6%	43.0%	39.3%
York and North Yorkshire	7.2	36.8	56.0	21.6	46.6	31.9	15.7%	40.3%	44.0%

Source: 'National Business Survey, November 2009, (Ipsos Mori on behalf of England's Regional Development Agencies and Invest Northern Ireland)'

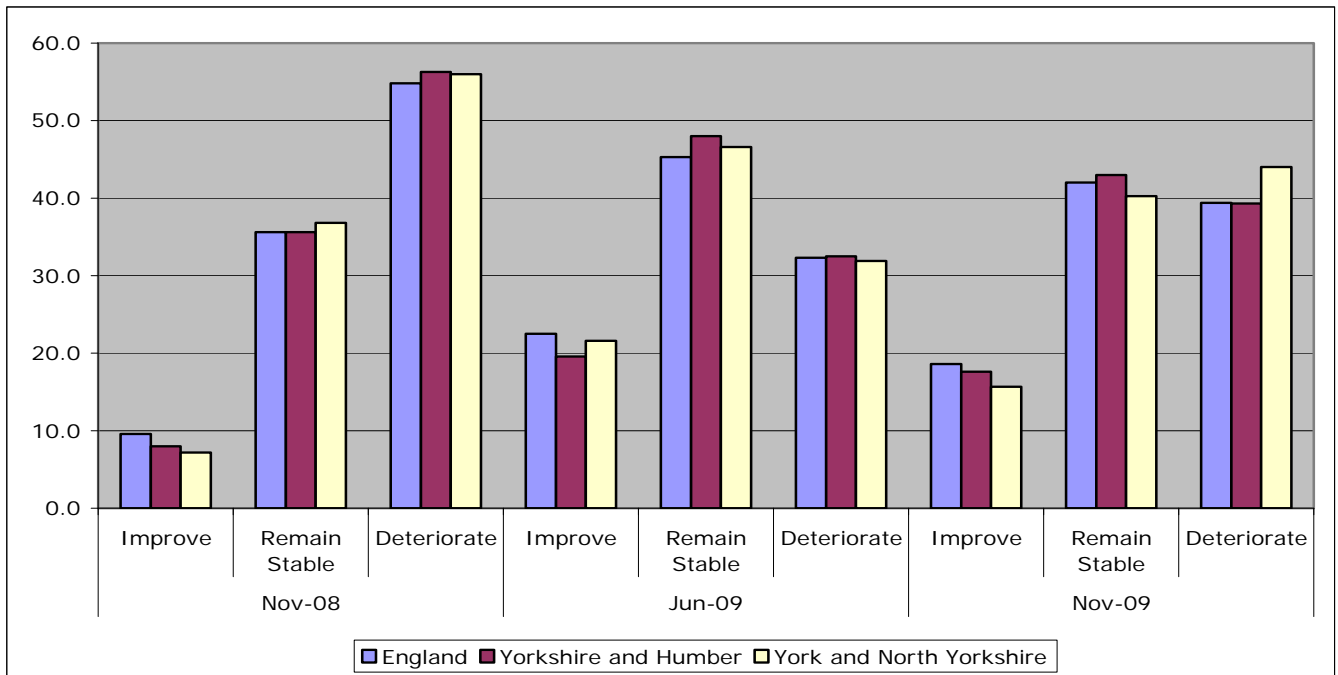


Source: 'National Business Survey, November 2009, (Ipsos Mori on behalf of England's Regional Development Agencies and Invest Northern Ireland)'

What has been the trend in the last 12 months with regard to numbers employed?

	Nov-08				Jun-09				Nov-09			
	Higher	Same	Lower	n/a	Higher	Same	Lower	n/a	Higher	Same	Lower	n/a
England	11.9	49.1	22.3	16.7	9.0	46.4	32.2	12.4	12.6%	46.5%	25.6%	15.3%
Yorkshire and Humber	13.4	46.9	24.4	15.2	7.1	44.5	29.8	18.6	16.3%	50.7%	19.2%	13.8%
York and North Yorkshire	12.8	43.9	20.0	23.3	6.3	50.9	24.3	18.5	14.5%	48.6%	22.4%	14.6%

Source: 'National Business Survey, June 2009, (Ipsos Mori on behalf of England's Regional Development Agencies and Invest Northern Ireland)'



Source: 'National Business Survey, November 2009, (Ipsos Mori on behalf of England's Regional Development Agencies and Invest Northern Ireland)'

N.B. The National Business Survey data is a sample and subject to some survey error. Sample sizes are smaller at more local levels therefore the confidence intervals are higher. Sample size can vary over the different time periods.

## **New Businesses**

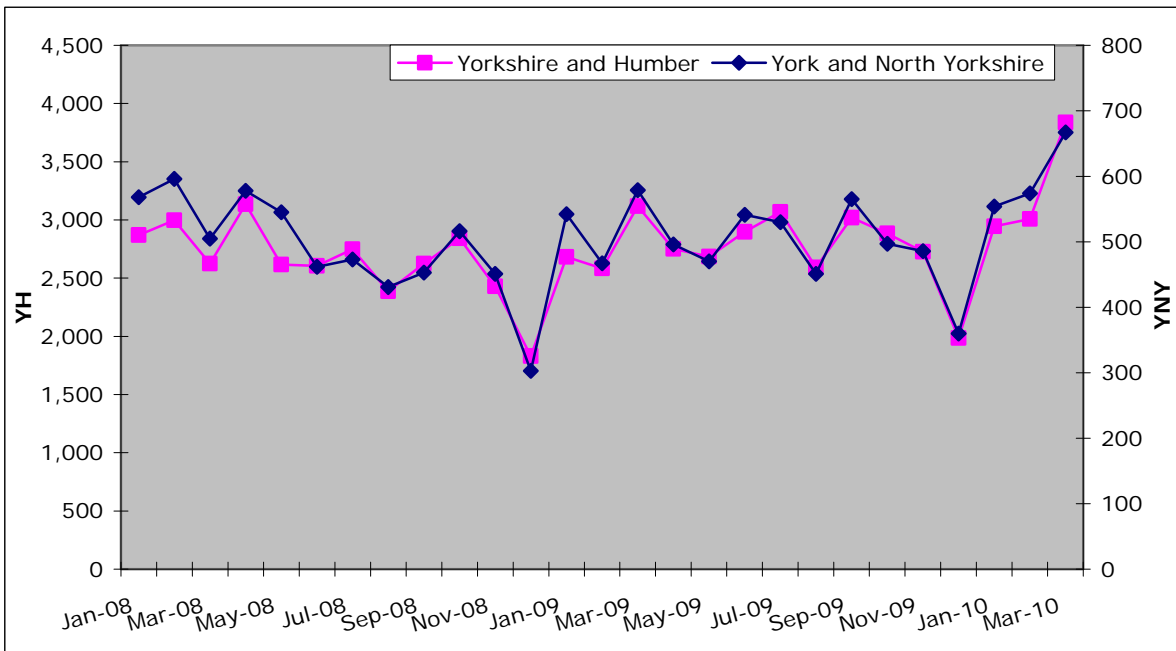
Information from the BankSearch Start up Interactive Database (IADB) provides a proxy to the number of new businesses being created in the sub region. The database provides information from Barclays, Co-Operative Bank, HSBC, Lloyds Banking Group, Royal Bank of Scotland and Santander. A 'Start-up' reflects the opening of a first current account from a small business banking product range. They represent businesses new to banking or those previously operated through a personal account. The data exclude businesses operating through personal accounts, those without banking relationships or those banking with other institutions. A small business is defined as having, or expected to have, annual debit turnover (i.e. outward payments from their accounts) of up to £1m per annum.

Number of new bank accounts

	March 2010	Monthly Change		Annual Change	
England	47,138	9,599	25.6%	8,990	23.6%
Yorkshire and Humber	3,837	830	27.6%	719	23.1%
York and North Yorkshire	667	93	16.2%	88	15.2%
North Yorkshire	544	75	16.0%	81	17.5%
York	123	18	17.1%	7	6.0%
Craven	44	0	0.0%	0	0.0%
Hambleton	69	1	1.5%	13	23.2%
Harrogate	187	27	16.9%	42	29.0%
Richmondshire	43	7	19.4%	3	7.5%
Ryedale	43	10	30.3%	-4	-8.5%
Scarborough	83	26	45.6%	29	53.7%
Selby	75	4	5.6%	-2	-2.6%

Source: BankSearch February 2010

Figure: Number of new bank accounts



Source: BankSearch

# Housing

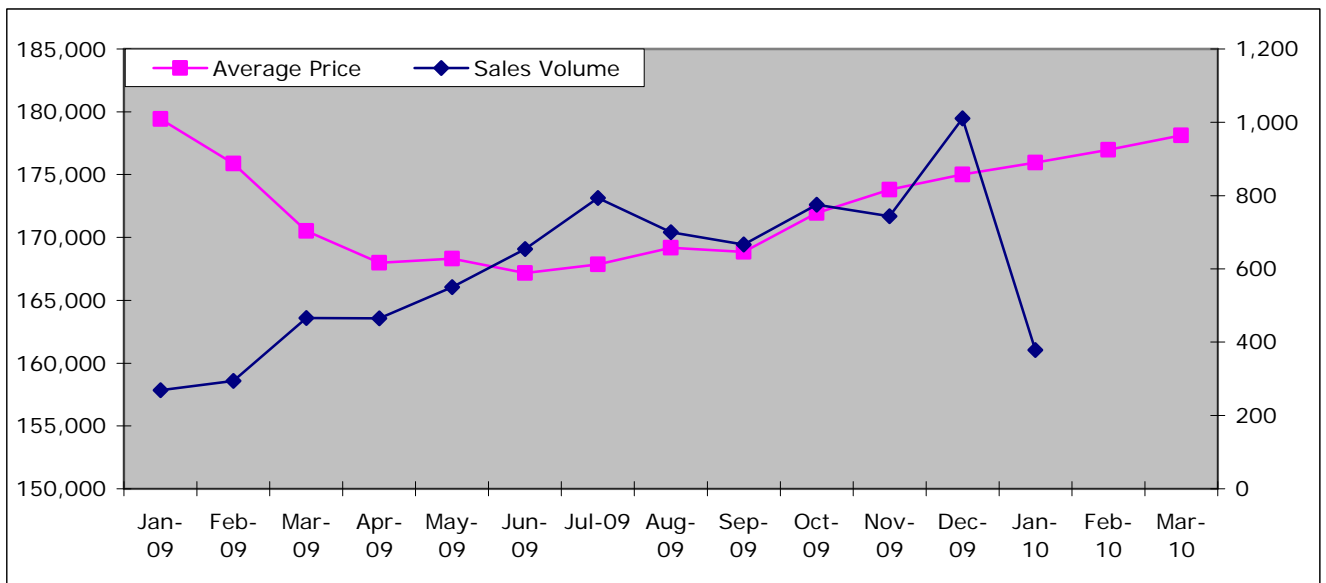
## Land Registry House Price Index

### North Yorkshire

	Index	Average Price	Monthly Change	Annual Change	Sales Volume
Jan-09	264.3	179,420	-1.1	-10.4	269
Feb-09	259.0	175,872	-2.0	-11.9	294
Mar-09	251.2	170,522	-3.0	-14.6	466
Apr-09	247.4	167,978	-1.5	-14.4	465
May-09	247.9	168,306	0.2	-14.3	550
Jun-09	246.2	167,168	-0.7	-14.0	654
Jul-09	247.2	167,855	0.4	-13.2	794
Aug-09	249.2	169,174	0.8	-12.1	700
Sep-09	248.7	168,866	-0.2	-10.6	667
Oct-09	253.3	171,952	1.8	-7.9	775
Nov-09	256.0	173,818	1.1	-5.7	744
Dec-09	257.8	175,012	0.7	-3.5	1,011
Jan-10	259.2	175,960	0.5	-1.9	378
Feb-10	260.7	176,980	0.6	0.6	-
Mar-10	262.3	178,115	0.6	4.5	-

Source: Land Registry, House Price Index  
 - Data not available

Figure: North Yorkshire – Average Price & Sales Volume



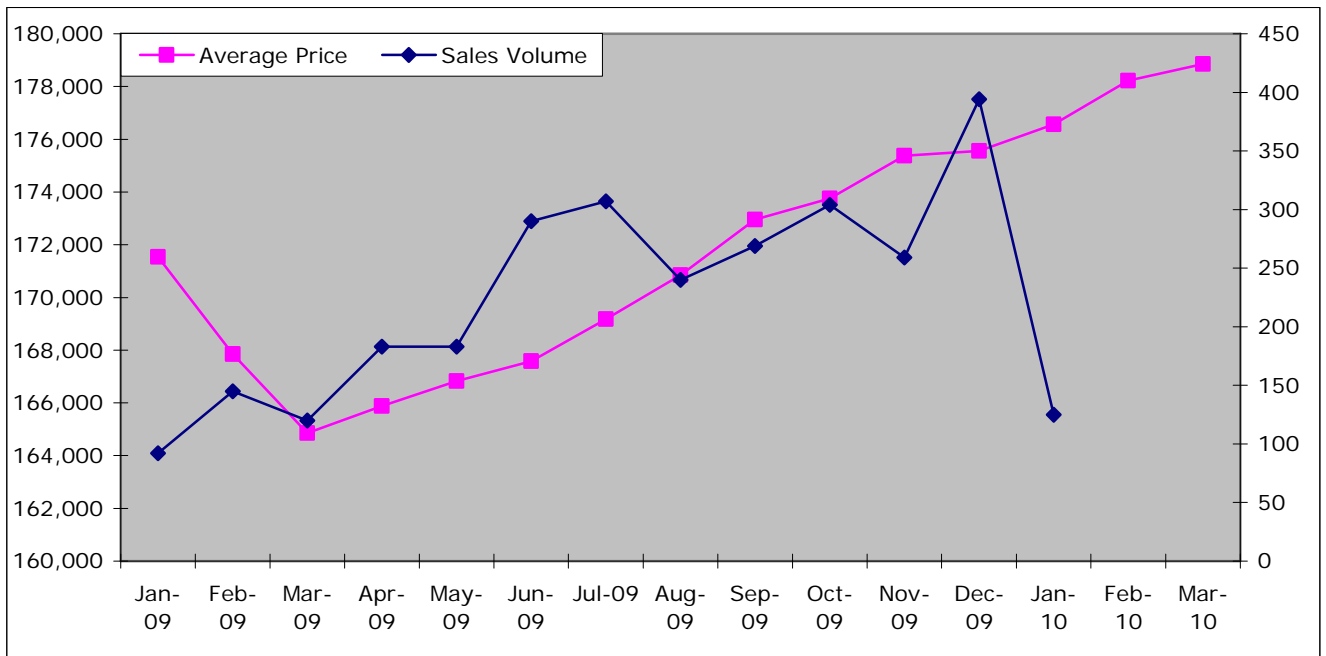
Source: Land Registry, House Price Index

York – Average Price & Sales Volume

	Index	Average Price	Monthly Change	Annual Change	Sales Volume
Jan-09	263.9	171,541	-0.3	-11.2	92
Feb-09	258.2	167,847	-2.2	-13.4	145
Mar-09	253.6	164,854	-1.8	-14.8	120
Apr-09	255.1	165,874	0.6	-14.1	183
May-09	256.6	166,828	0.6	-13.2	183
Jun-09	257.8	167,582	0.5	-11.6	290
Jul-09	260.2	169,176	1.0	-10.6	307
Aug-09	262.8	170,845	1.0	-8.9	240
Sep-09	266.0	172,949	1.2	-4.6	269
Oct-09	267.3	173,757	0.5	-2.7	304
Nov-09	269.7	175,370	0.9	-0.5	259
Dec-09	270.0	175,557	0.1	2.0	394
Jan-10	271.6	176,571	0.6	2.9	125
Feb-10	274.1	178,224	0.9	6.2	-
Mar-10	275.1	178,852	0.4	8.5	-

Source: Land Registry, House Price Index  
 - Data not available

Figure: York – Average Price & Sales Volume



Source: Land Registry, House Price Index

## Mean House Prices

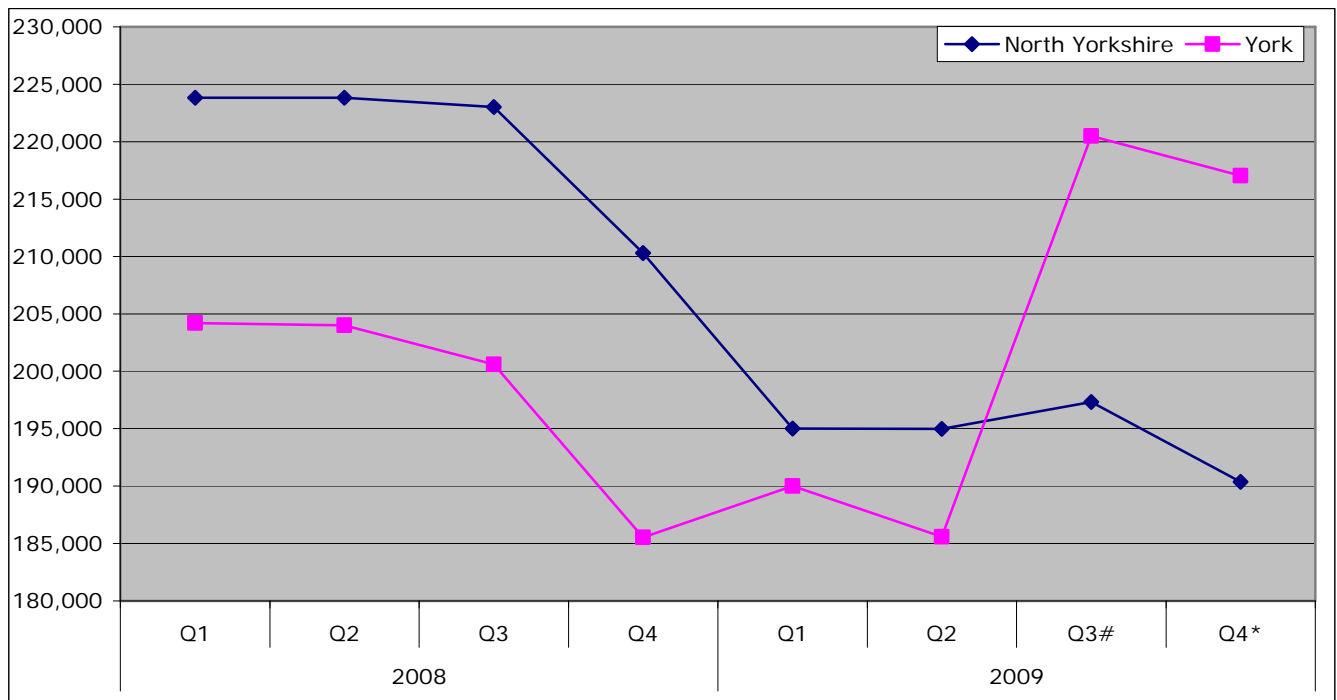
	2008				2009				% Change on previous year	% Change on previous Quarter
	Q1	Q2	Q3	Q4	Q1	Q2	Q3#	Q4*		
England	221,270	222,441	227,182	207,372	200,539	206,034	226,487	222,444	7.3%	-1.8%
Yorkshire & Humber	155,180	159,859	156,608	150,688	140,852	146,489	158,849	161,406	7.1%	1.6%
York & North Yorkshire	220,471	220,073	219,456	207,143	191,931	190,597	216,092	214,146	3.4%	-0.9%
North Yorkshire	223,812	223,835	223,002	210,287	195,019	194,982	197,340	190,368	-9.5%	-3.5%
York	204,209	204,004	200,603	185,531	189,994	185,595	220,493	217,018	17.0%	-1.6%
Craven	206,501	211,979	213,589	202,136	168,367	193,672	204,714	200,970	-0.6%	-1.8%
Hambleton	231,621	248,417	240,533	254,409	197,409	213,195	224,662	231,974	-8.8%	3.3%
Harrogate	280,397	286,204	269,747	244,392	239,973	238,305	272,966	260,521	6.6%	-4.6%
Richmondshire	210,311	230,944	223,971	190,838	208,510	196,254	233,267	229,744	20.4%	-1.5%
Ryedale	266,365	225,208	239,240	233,013	210,153	180,015	221,301	213,924	-8.2%	-3.3%
Scarborough	179,150	169,107	167,178	172,640	150,757	147,100	162,225	170,586	-1.2%	5.2%
Selby	185,217	184,721	200,788	174,182	170,288	170,643	189,110	188,429	8.2%	-0.4%

Source: DCLG

# Data has been revised

\* Data is provisional

Figure: Mean House Prices, North Yorkshire and York



Source: DCLG

# Data has been revised

\* Data is provisional

## Property Sales

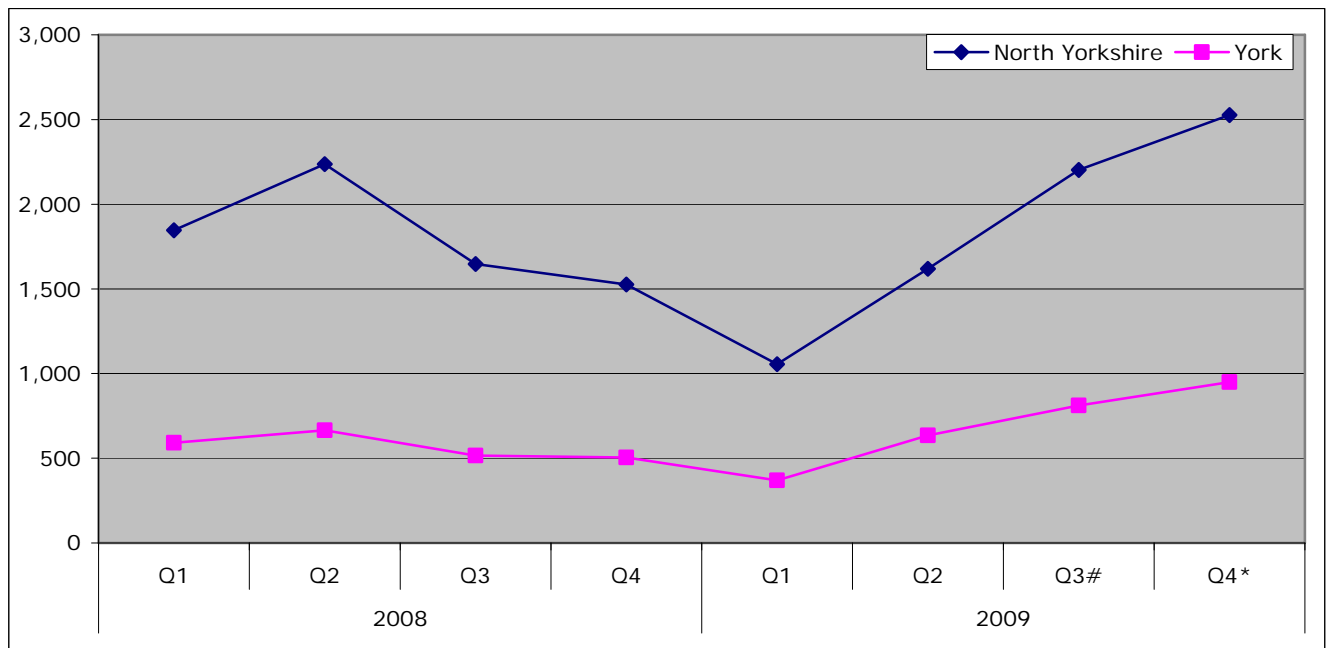
	2008				2009				% Change on previous year	% Change on previous Quarter
	Q1	Q2	Q3	Q4	Q1	Q2	Q3#	Q4*		
England	173,560	181,420	138,533	116,327	87,289	126,631	171,550	189,129	36.5%	49.4%
Yorkshire & Humber	17,276	18,717	14,017	12,059	8,537	12,004	14,932	16,631	18.6%	38.5%
York & North Yorkshire	2,436	2,902	2,162	2,030	1,424	2,253	3,014	3,476	60.8%	54.3%
North Yorkshire	1,845	2,237	1,646	1,526	1,055	1,619	2,203	2,527	53.5%	56.1%
York	591	665	516	504	369	634	811	949	83.9%	49.7%
Craven	173	223	161	163	92	133	227	242	50.3%	82.0%
Hambleton	222	292	244	202	145	231	308	345	41.4%	49.4%
Harrogate	489	537	443	352	316	450	626	710	60.3%	57.8%
Richmondshire	133	188	94	94	61	110	157	155	64.9%	40.9%
Ryedale	124	178	127	146	67	121	193	206	62.2%	70.2%
Scarborough	448	485	381	347	240	335	409	485	27.3%	44.8%
Selby	256	334	196	222	134	239	283	384	95.9%	60.7%

Source: DCLG

# Data has been revised

\* Data is provisional

Figure: Number of Property Sales, North Yorkshire and York



Source: DCLG

# Data has been revised

\* Data is provisional

## Mortgage and Landlord Possession Claims/Orders

The following data indicates the number of claims/orders that have been issued at County Court level for possession of properties either under mortgage or landlord possession.

N.B. Important note - Introduction of Mortgage Pre-Action Protocol (MPAP) on 19 November 2008.

A new mortgage pre action protocol (MPAP), was introduced for possession claims in the County Courts with effect from 19 November 2008.

Evidence from administrative records from October to December 2008 suggests that this date coincided with a fall of around 50% in the daily and weekly numbers of new mortgage repossession claims being issued in the courts. It therefore seems highly likely that the launch of the MPAP has led to a marked fall in the number of new claims being issued during the latter part of the period covered by this bulletin. However, given the apparent cause, users should exercise caution in drawing broader inferences from the fall in mortgage possession claims issued in Q4 2008.

Mortgage possession orders are typically made around 8 weeks after the corresponding claims are issued. For this reason, the impact of the MPAP is expected to occur during the early months of 2009. At this early stage is not clear to what extent the launch of the MPAP has led to a permanent fall in the numbers of new mortgage possession claims being issued, as opposed to some merely being postponed. This will become clearer as statistics for 2009 are published.

### Mortgage Possession Claims Issued

	Q1 2008	Q2 2008	Q3 2008	Q4 2008	Q1 2009	Q2 2009	Q3 2009	Q4 2009	% change since Q4 2008	% change since Q3 2009
Yorkshire & Humber	4,038	3,928	3,962	2,669	2,476	2,760	2,820	1,990	-25.4%	-29.4%
York & North Yorkshire	360	337	358	258	237	245	230	220	-14.7%	-4.3%
Harrogate	59	56	44	45	40	45	50	40	-11.1%	-20.0%
Scarborough	120	97	138	93	78	80	65	60	-35.5%	-7.7%
Skipton	33	41	29	20	24	25	25	25	25.0%	0.0%
York	148	143	147	100	95	95	90	70	-30.0%	-22.2%

Source: Ministry of Justice

### Mortgage Possession Orders Issued

	Q1 2008	Q2 2008	Q3 2008	Q4 2008	Q1 2009	Q2 2009	Q3 2009	Q4 2009	% change since Q4 2008	% change since Q3 2009
Yorkshire & Humber	-	-	-	-	1,821	1,920	2,325	1,875	-	-19.4%
York & North Yorkshire	-	-	-	-	152	160	195	175	-	-10.3%
Harrogate	-	-	-	-	30	25	40	30	-	-25.0%
Scarborough	90	80	116	113	57	45	65	35	-69.0%	-46.2%
Skipton	29	32	31	27	15	20	15	15	-44.4%	0.0%
York	100	106	93	123	50	70	75	55	-55.3%	-26.7%

Source: Ministry of Justice

### Landlord Possession Claims issued

	Q1 2008	Q2 2008	Q3 2008	Q4 2008	Q1 2009	Q2 2009	Q3 2009	Q4 2009	% change since Q4 2008	% change since Q3 2009
Yorkshire & Humber	2,671	2,656	2,434	2,438	2,370	2,340	2,215	2,205	-9.6%	-9.6%
York & North Yorkshire	280	252	288	266	232	240	210	250	-6.0%	-6.0%
Harrogate	46	48	56	40	33	40	35	25	-37.5%	-37.5%
Scarborough	82	64	81	85	60	75	65	65	-23.5%	-23.5%
Skipton	15	8	16	18	12	10	10	10	-44.4%	-44.4%
York	137	132	135	123	127	115	100	100	-18.7%	-18.7%

Source: Ministry of Justice

### Landlord Possession Orders issued

	Q1 2008	Q2 2008	Q3 2008	Q4 2008	Q1 2009	Q2 2009	Q3 2009	Q4 2009	% change since Q4 2008	% change since Q3 2009
Yorkshire & Humber	-	-	-	-	2,403	1,660	1,815	1,725	-	-5.0%
York & North Yorkshire	-	-	-	-	233	-	190	220	-	15.8%
Harrogate	-	-	-	-	44	20	35	25	-	-28.6%
Scarborough	76	52	69	75	70	30	70	55	-26.7%	-21.4%
Skipton	16	5	13	12	12	*	15	10	-16.7%	-33.3%
York	110	75	106	116	107	95	70	90	-22.4%	28.6%

Source: Ministry of Justice

\* The figure is not provided as the number of claims leading to an order made is either 7 or less, or if it is a % change where there are fewer than 30 observations in the base period

## Planning

### Total Planning Decisions

	Q4 2008	Q1 2009	Q2 2009	Q3 2009	Q4 2009	Annual Change		Quarterly Change	
England	115,489	93,100	105,000	111,630	105,320	-10,169	-8.8%	-6,310	-5.7%
Yorkshire and Humber	9,937	7,800	8,900	9,333	8,453	-1,484	-14.9%	-880	-9.4%
York and North Yorkshire	2,513	2,111	2,197	2,085	1,948	-565	-22.5%	-137	-6.6%
North Yorkshire	2,058	1,737	1,818	1,673	1,541	-517	-25.1%	-132	-7.9%
York	455	374	379	412	407	-48	-10.5%	-5	-1.2%
Craven	117	121	#	139	134	17	14.5%	-5	-3.6%
Hambleton	300	278	337	326	271	-29	-9.7%	-55	-16.9%
Harrogate	613	461	427	529	452	-161	-26.3%	-77	-14.6%
Richmondshire	141	138	173	148	144	3	2.1%	-4	-2.7%
Ryedale	180	155	187	176	168	-12	-6.7%	-8	-4.5%
Scarborough	186	165	188	188	206	20	10.8%	18	9.6%
Selby	213	168	211	167	166	-47	-22.1%	-1	-0.6%
North York Moors	166	143	160	156	167	1	0.6%	11	7.1%
Yorkshire Dales	142	108	135	141	114	-28	-19.7%	-27	-19.1%

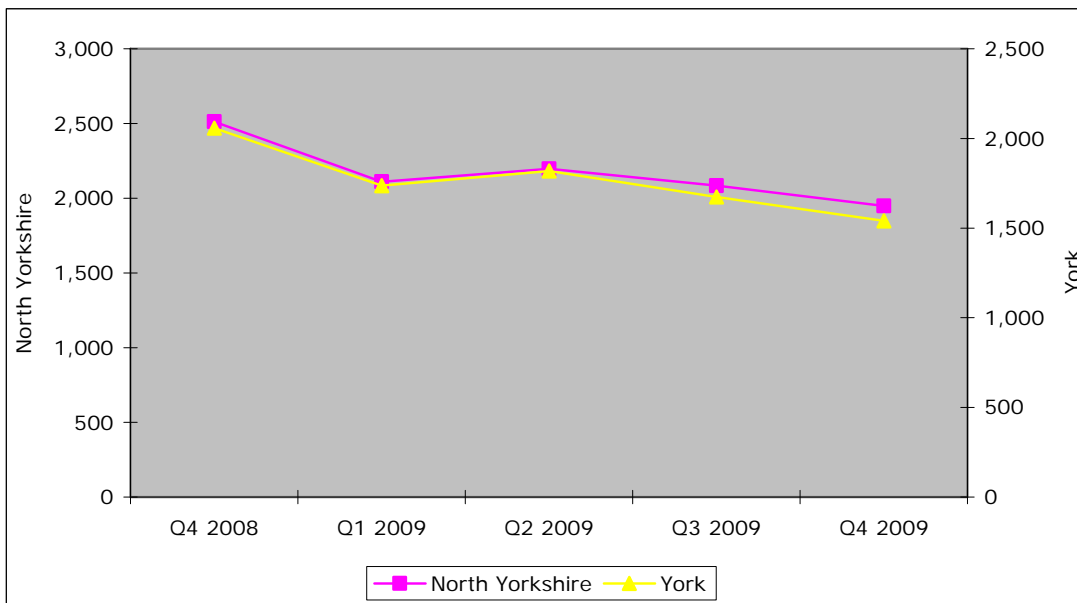
Source: Statistics of Planning Decisions, CLG

# Data not submitted

- Data cannot be calculated

The figures for York and North Yorkshire for Q2 2009 does not include data for Craven

Figure: Total Planning Decisions, North Yorkshire/York



Source: Statistics of Planning Decisions, CLG

N.B. The number of decisions made in Q3 2008 is not available and therefore excluded from the chart. The figure for North Yorkshire for Q2 2009 does not include data for Craven

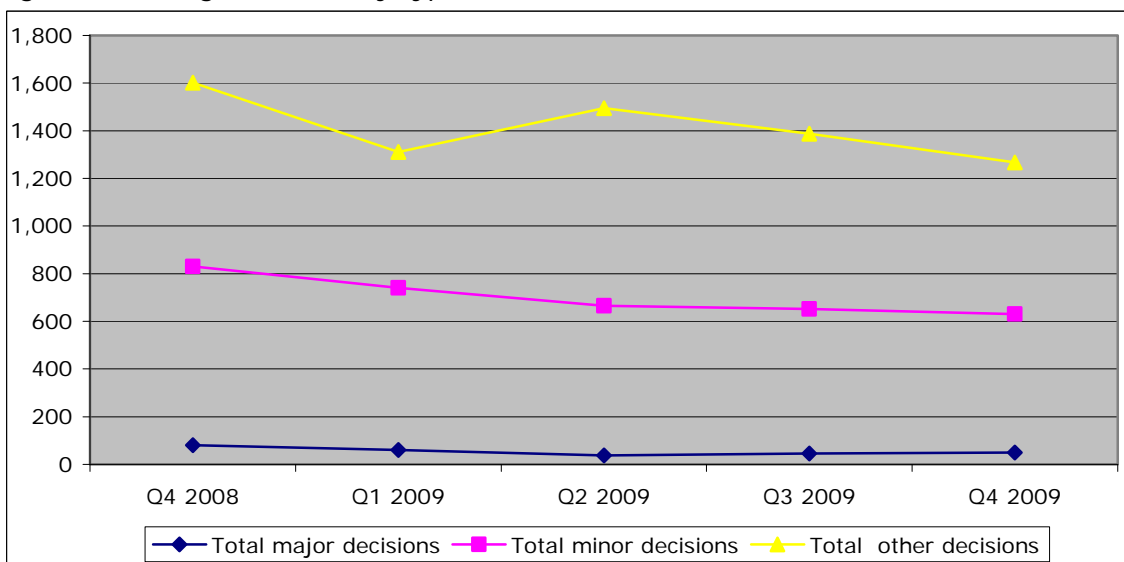
**Breakdown of planning decisions by type in York and North Yorkshire**

	Q4 2008	Q1 2009	Q2 2009	Q3 2009	Q4 2009
Total major decisions	81	60	37	45	50
Total minor decisions	830	740	666	652	631
Total other decisions	1,602	1,311	1,494	1,388	1,267
<b>Total</b>	<b>2,513</b>	<b>2,111</b>	<b>2,197</b>	<b>2,085</b>	<b>1,948</b>

Source: Statistics of Planning Decisions, CLG

N.B Figures shown for Q2 2009 does not include data for Craven

Figure: Planning Decisions by type, York and North Yorkshire



Source: Statistics of Planning Decisions, CLG

N.B Figures shown for Q2 2009 does not include data for Craven

### Breakdown of planning decisions by type, North Yorkshire

	Q4 2008	Q1 2009	Q2 2009	Q3 2009	Q4 2009
Total major decisions	69	50	33	33	47
Total minor decisions	700	630	575	551	526
Total other decisions	1,289	1,057	1,210	1,089	968
<b>Total</b>	<b>2,058</b>	<b>1,737</b>	<b>1,818</b>	<b>1,673</b>	<b>1,541</b>

Source: Statistics of Planning Decisions, CLG

N.B Figures shown for Q2 2009 does not include data for Craven

### Breakdown of planning decisions by type, York

	Q4 2008	Q1 2009	Q2 2009	Q3 2009	Q4 2009
Total major decisions	12	10	4	12	3
Total minor decisions	130	110	91	101	105
Total other decisions	313	254	284	299	299
<b>Total</b>	<b>455</b>	<b>374</b>	<b>379</b>	<b>412</b>	<b>407</b>

Source: Statistics of Planning Decisions, CLG

## Tourism

### Number of Visits to Leisure Attractions in York and North Yorkshire

	No of Attractions Responding	Total Previous Year	Total	% Change
Jul-08	54	621,521	600,900	-3%
Aug-08	56	832,091	843,934	1%
Sep-08	56	530,743	446,212	-16%
Oct-08	50	422,394	381,563	-10%
Nov-08	40	197,447	184,794	-6%
Dec-08	36	194,004	150,948	-22%
Jan-09	58	153,038	120,111	-22%
Feb-09	44	-	-	-16%
Mar-09	63	-	-	-11%
Apr-09	54	-	-	47%
May-09	54	-	-	11.1%
Jun-09	56			3.7%
Jul-09	57			7.2%

Source: Visitor Attraction Monitor, Yorkshire Tourist Board

## **Community and Voluntary Sector**

### **Demand for CAB services**

2009/10 Q3	Craven	Hambleton	Richmondshire	Ripon	Ryedale	Scarborough	Selby
Benefits	607	903	805	446	703	984	1,247
Debt	414	1598	1,016	113	826	1,732	1,432
Employment	224	291	252	111	129	286	1,128
Health & Community	38	34	26	25	16	43	29
Relationships & family	84	146	156	49	53	145	169
Total	1,367	2,972	2,255	744	1,727	3,190	4,005

Source: York and North Yorkshire Infrastructure Consortium.

N.B it is hoped CAB figures for York and Harrogate will be included next quarter. A new sub-regional figure is included in the main report.