

National Picture

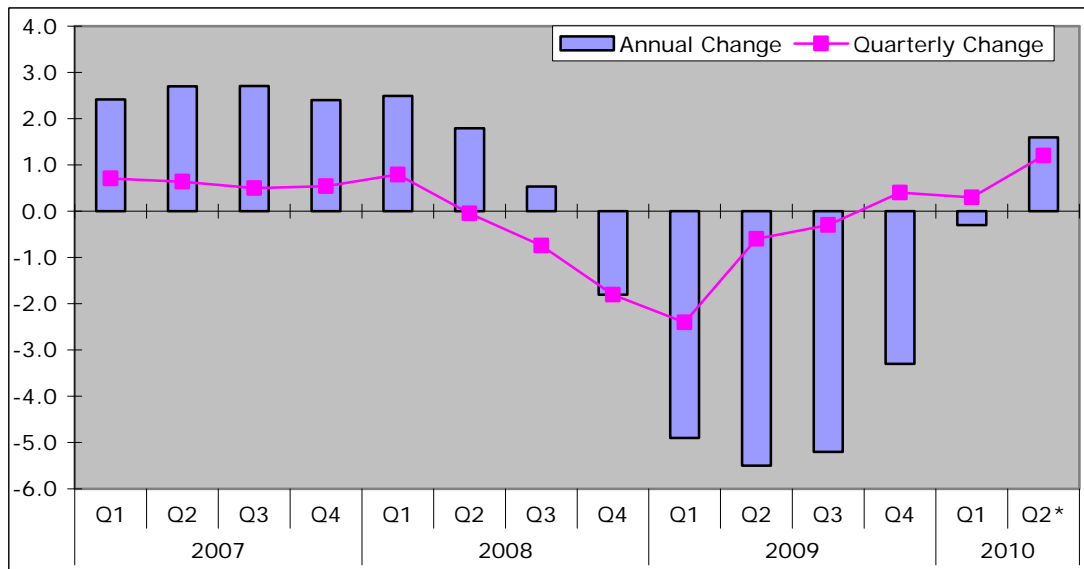
Key Indicators	June 2010	July 2010 *	Change
Inflation figures - CPI	3.2	3.1	-0.1
Inflation figures - RPI	5.0	4.8	-0.2
New Businesses - VAT Registrations	15,810	19,495	3,685 23.3%
VAT De-registrations	19,681	18,384	-1,297 -6.6%

Source: ONS, UK Trade Info

* Provisional

- ◆ Revised estimates suggest GDP increased by 1.2% in Q2 of 2010.

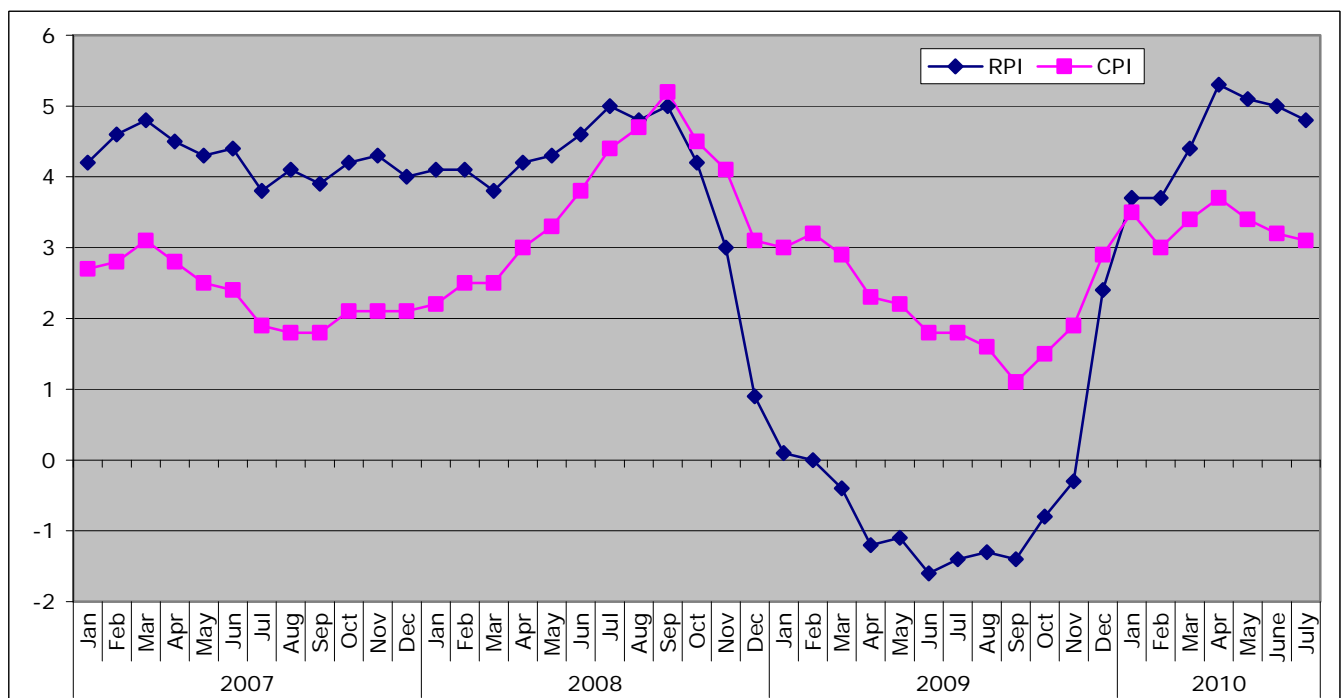
Change to GDP



Source: ONS

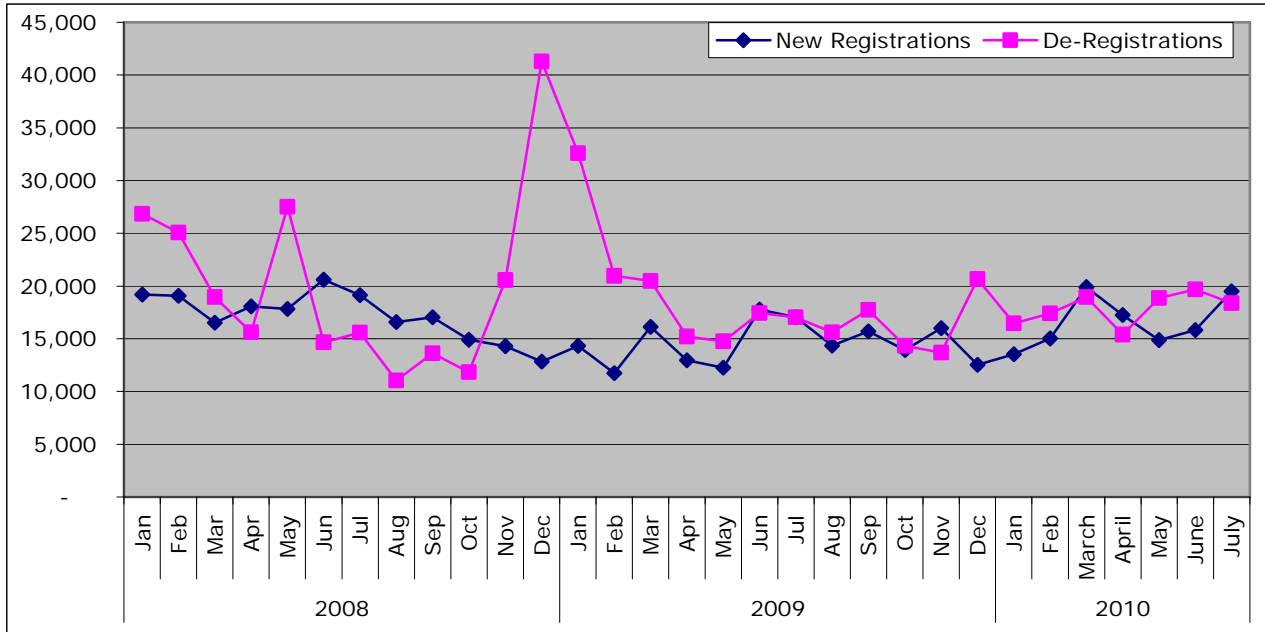
* Data is provisional

Inflation Trends



Source: ONS

New Business Registrations and De-Registrations



Source: UK Trade Info

Local Picture

Labour Market

Confirmed Job losses - April 2010

Company	Location	No. jobs	Type of Service
Skipton Building Society	Scarborough	-136	Financial Services
Total		-136	

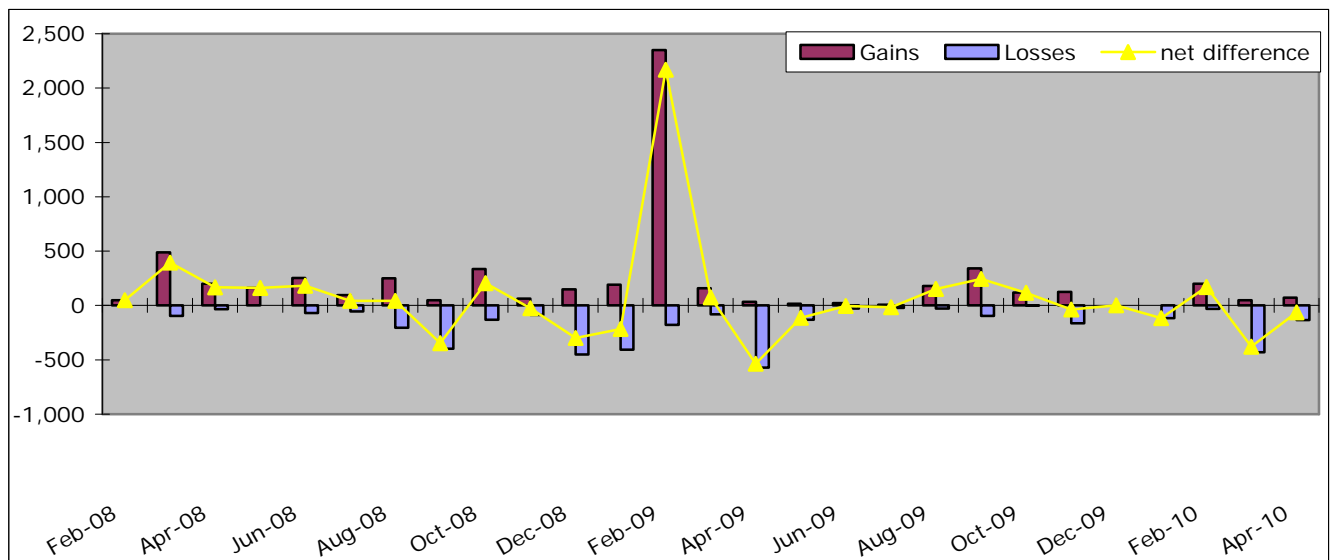
Confirmed Job Gains - April 2010

Company	Location	No. Jobs	Type of Service
Nespresso (Nestle)	York	73	Manufacturing Food, Drink and Tobacco
Total		73	

Source: Yorkshire Futures Monthly jobs database

N.B. An updated jobs database is currently unavailable. Updated information will be provided when available.

Job Gains, Losses and net difference



Source: Yorkshire Forward jobs database

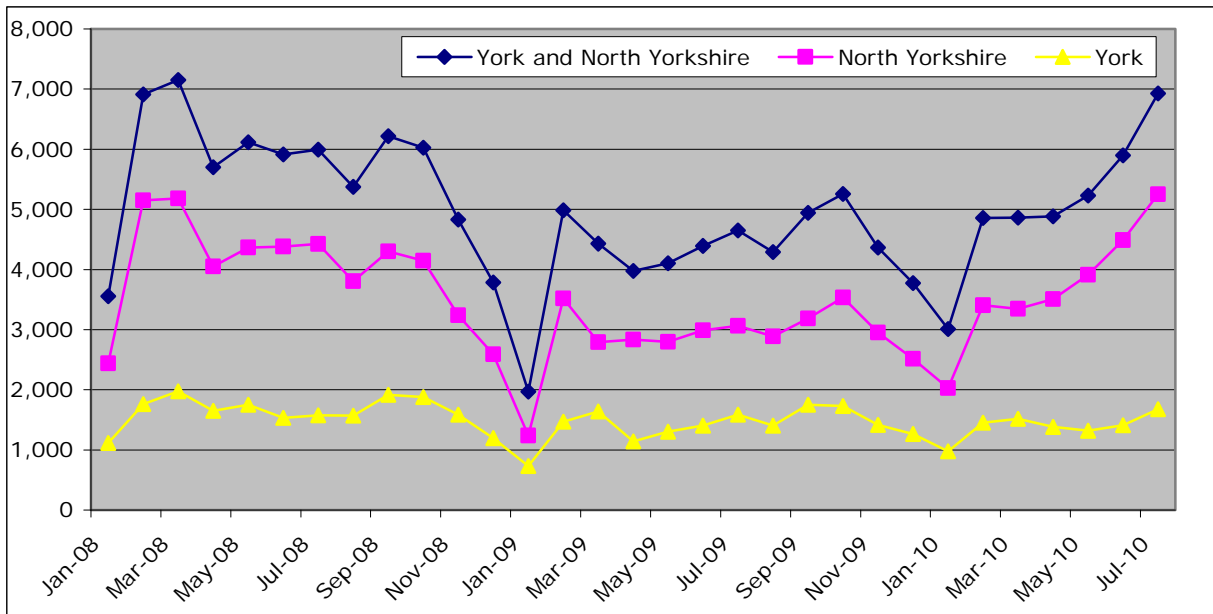
Job Vacancies

Number of notified job vacancies

	July 2010	Monthly Change		Annual Change	
England	303,343	-11,687	-3.7%	54,930	22.1%
Yorkshire and Humber	35,700	1,090	3.1%	10,193	40.0%
York and North Yorkshire	6,929	1,032	17.5%	2,280	49.0%
North Yorkshire	5,251	765	17.1%	2,188	71.4%
York	1,678	267	18.9%	92	5.8%
Craven	356	4	1.1%	135	61.1%
Hambleton	989	297	42.9%	644	186.7%
Harrogate	1,545	194	14.4%	529	52.1%
Richmondshire	433	-11	-2.5%	229	112.3%
Ryedale	271	20	8.0%	115	73.7%
Scarborough	899	83	10.2%	288	47.1%
Selby	757	177	30.5%	247	48.4%

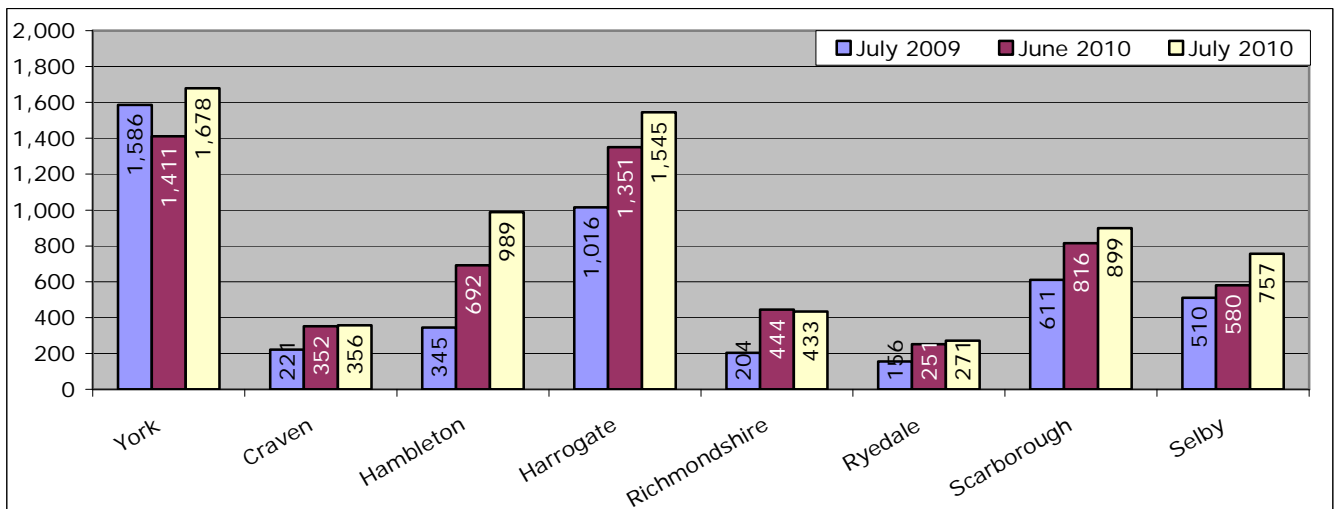
Source: Job Centre Plus, via Nomis

Number of vacancies trend



Source: Job Centre Plus, via Nomis

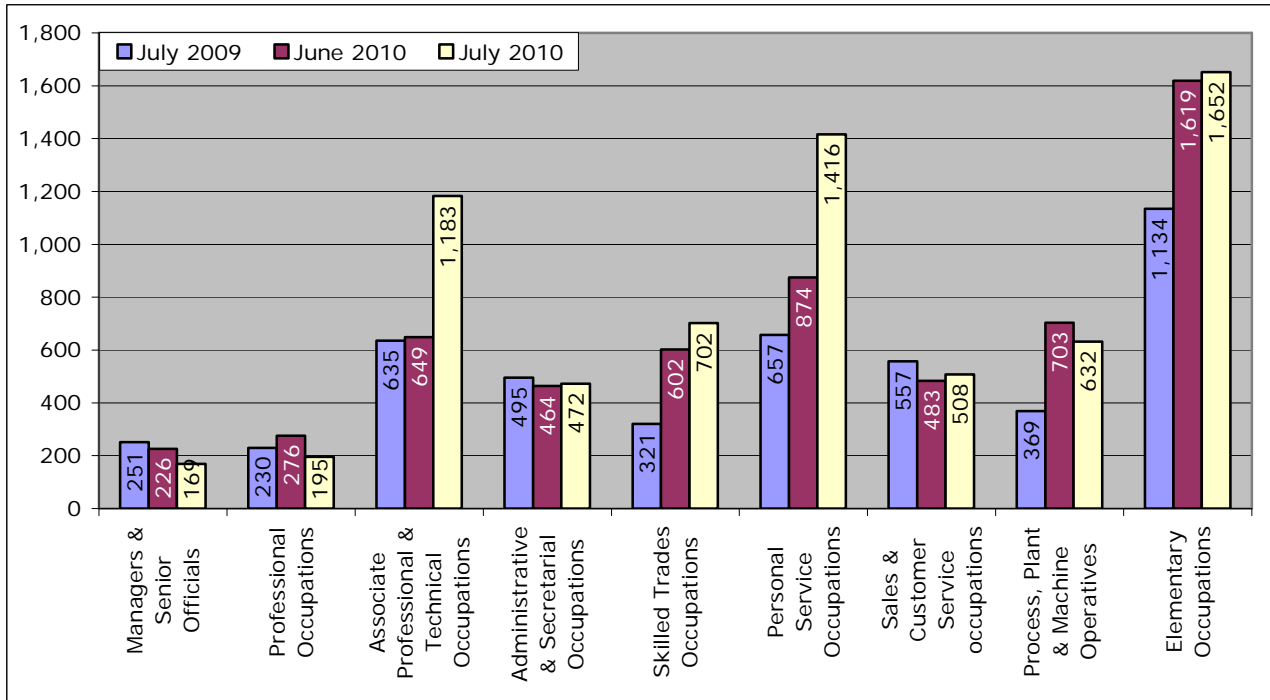
Number of Vacancies, Year on Year comparison



Source: Job Centre Plus, via Nomis

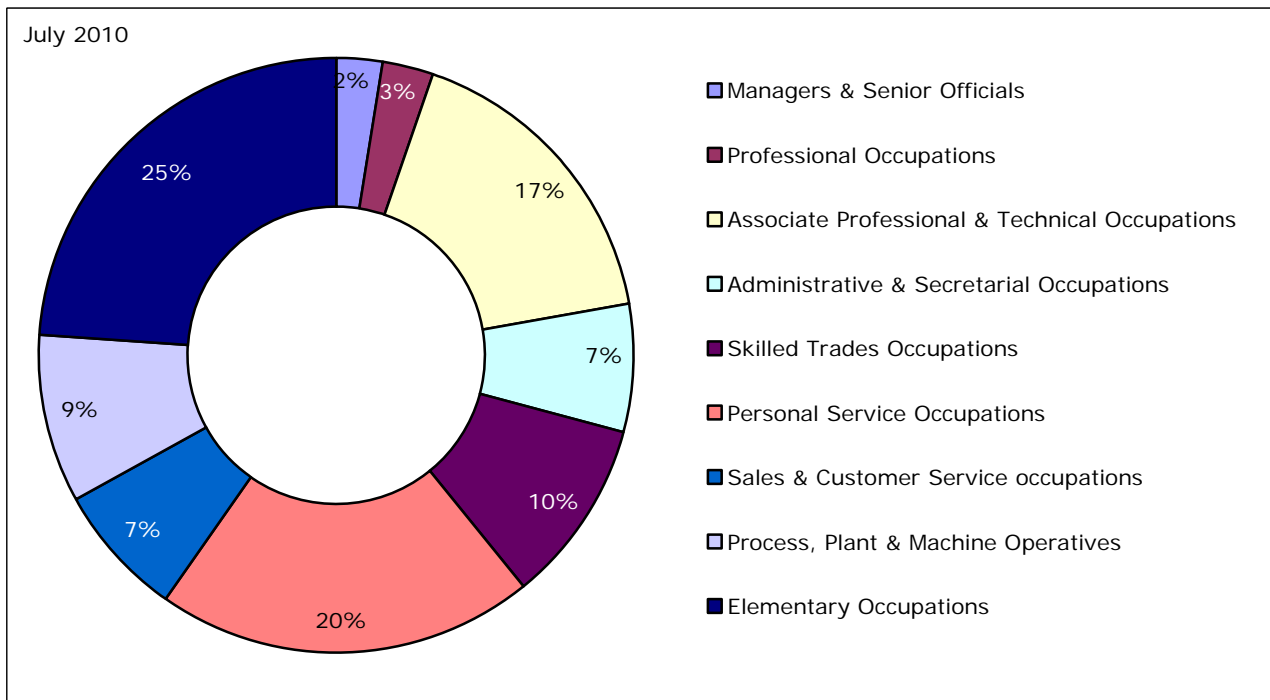
Vacancies by Occupation

Notified Vacancies by Occupation, York and North Yorkshire



Source: Job Centre Plus, via Nomis

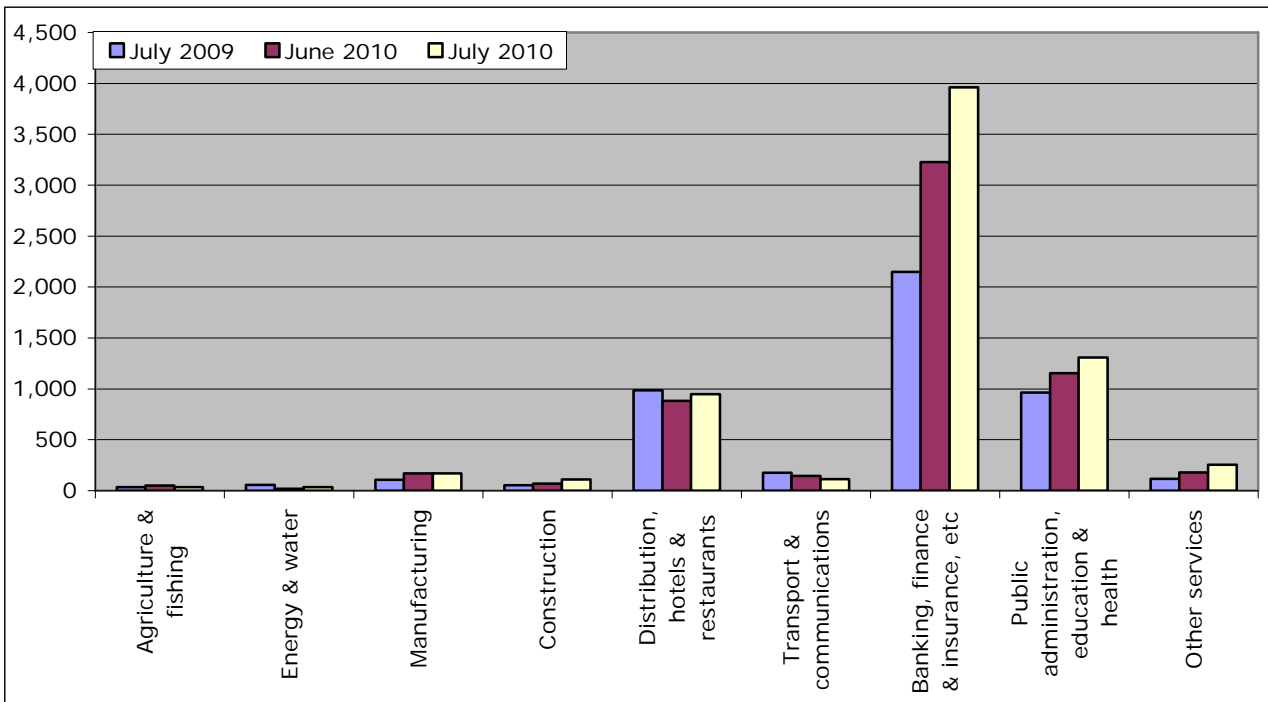
Notified vacancies by occupation, York and North Yorkshire, July 2010



Source: Job Centre Plus, via Nomis

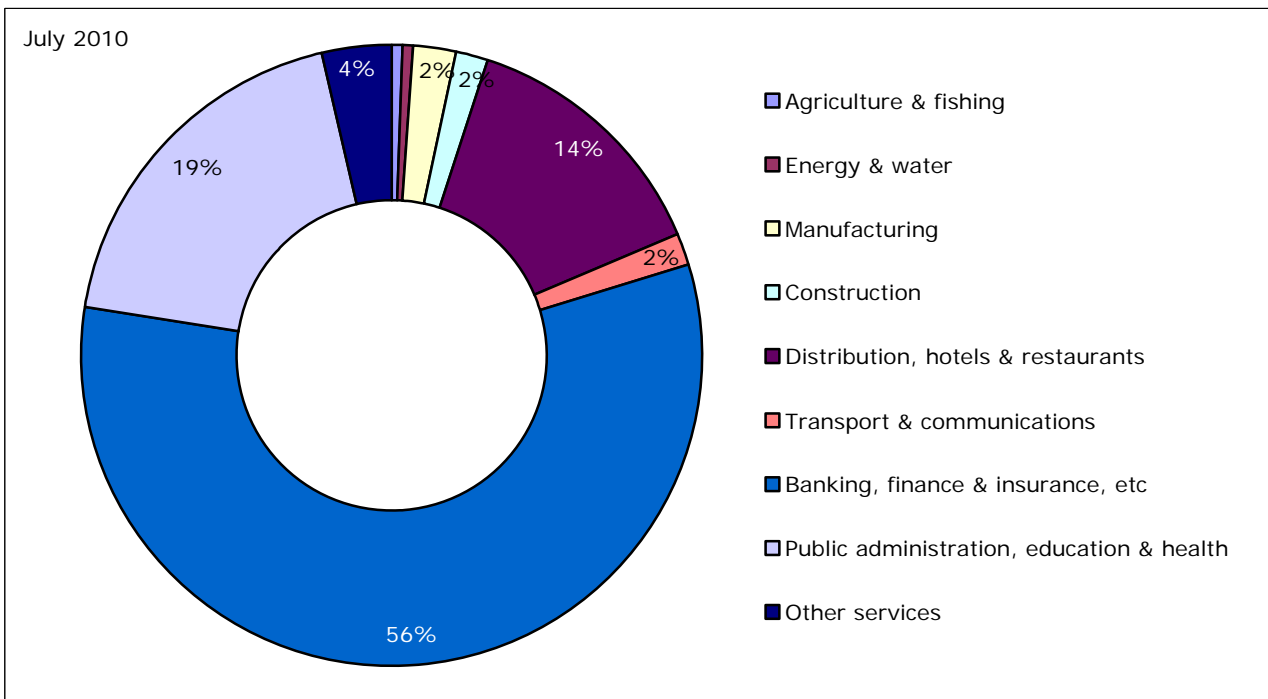
Vacancies by Industry

Notified vacancies by broad industrial sector, York and North Yorkshire



Source: Job Centre Plus, via Nomis

Notified vacancies by broad industrial sector, York and North Yorkshire, July 2010



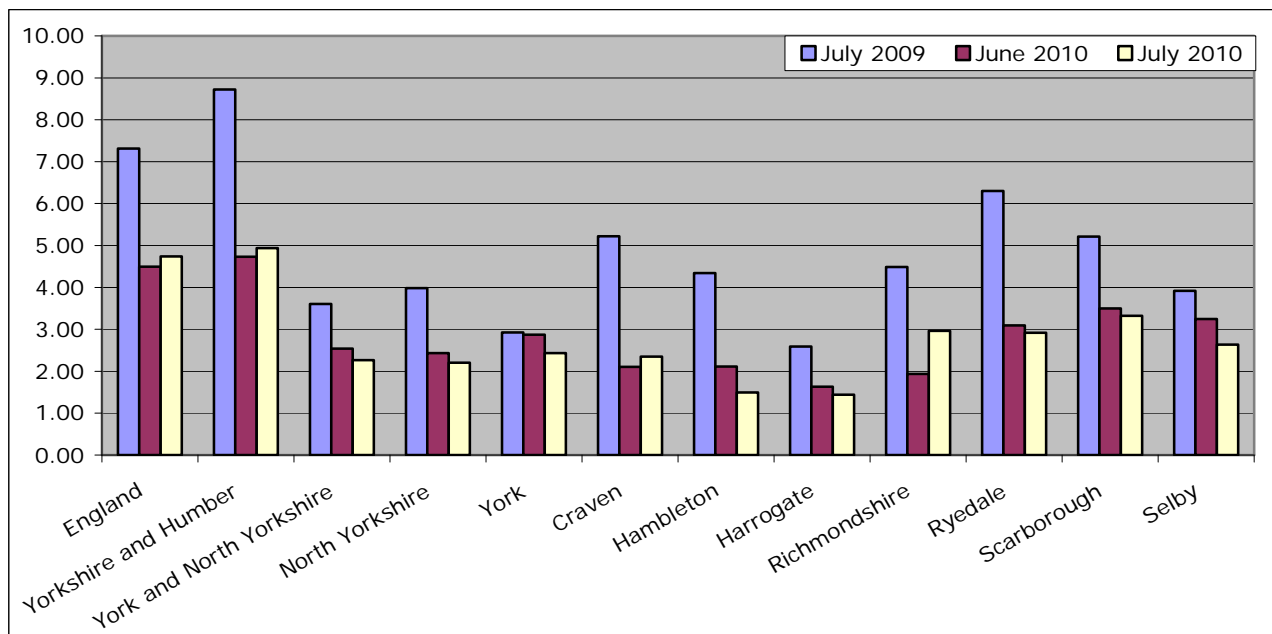
Source: Job Centre Plus, via Nomis

Number of JSA Claimant to Vacancy ratio

	July 2009	June 2010	July 2010	Monthly Change	Annual Change
England	7.32	4.49	4.74	0.24	-2.58
Yorkshire and Humber	8.72	4.73	4.94	0.20	-3.79
York and North Yorkshire	3.61	2.54	2.27	-0.28	-1.34
North Yorkshire	3.98	2.43	2.21	-0.23	-1.77
York	2.93	2.87	2.43	-0.43	-0.49
Craven	5.22	2.11	2.35	0.25	-2.87
Hambleton	4.34	2.12	1.49	-0.62	-2.85
Harrogate	2.59	1.63	1.44	-0.19	-1.15
Richmondshire	4.48	1.93	2.97	1.03	-1.52
Ryedale	6.30	3.09	2.92	-0.17	-3.38
Scarborough	5.22	3.50	3.32	-0.18	-1.90
Selby	3.92	3.25	2.63	-0.61	-1.29

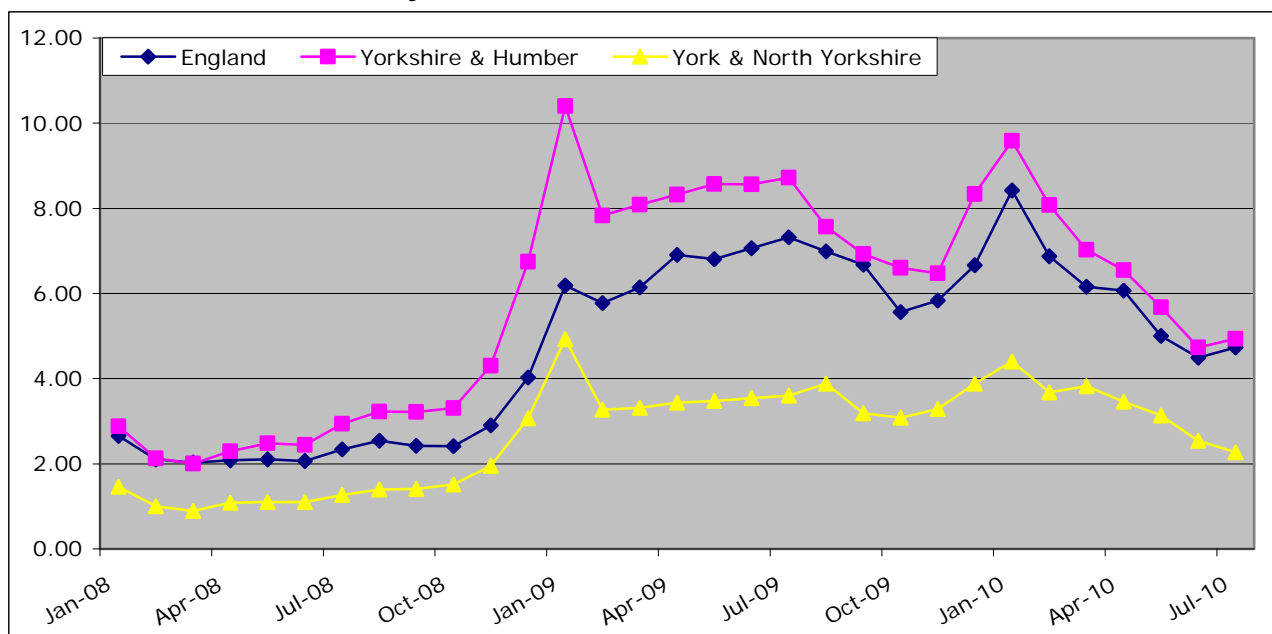
Source: Nomis

Number of Claimant to Vacancy ratio, Year on Year comparison



Source: Nomis

Number of Claimant to Vacancy ratio trend



Source: Nomis

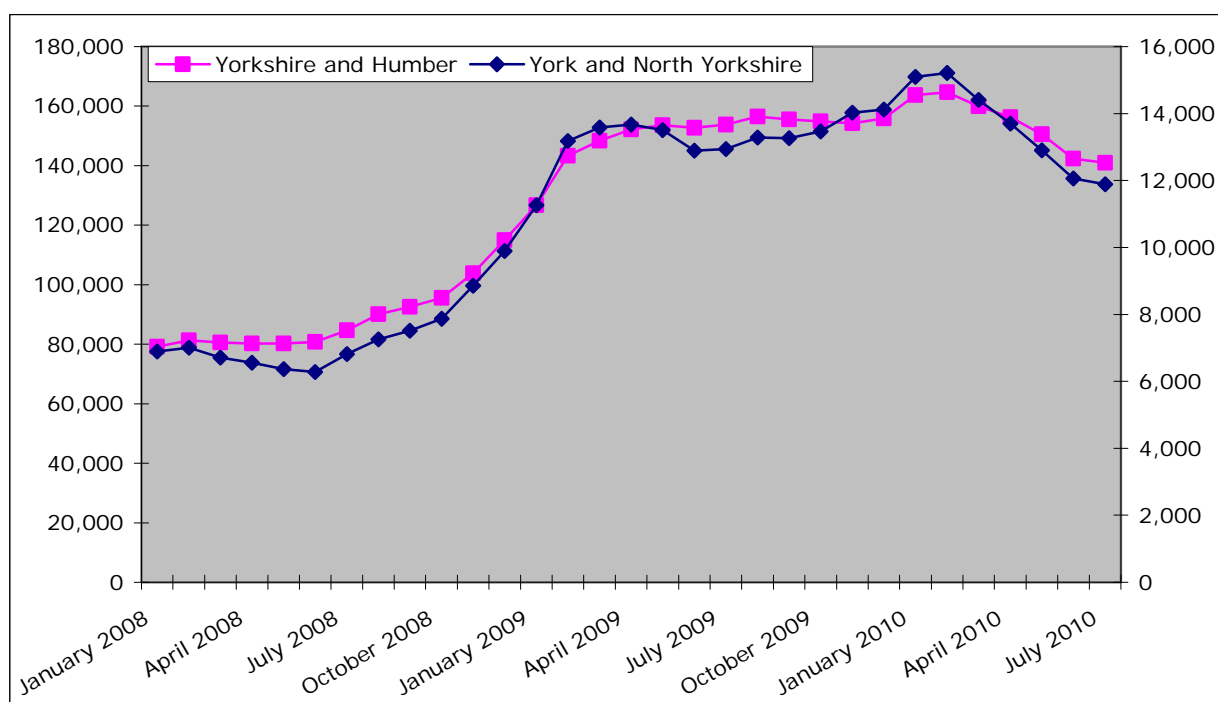
Unemployment

Total Number JSA Claimants (Claimant Count)

	July 2010	Monthly Change	Monthly % Change	Annual Change	Annual % Change
England	1,177,672	-8,674	-0.7	-133,426	-10.2
Yorkshire and Humber	140,908	-1,482	-1.0	-12,886	-8.4
York and North Yorkshire	11,887	-177	-1.5	-1,054	-8.1
North Yorkshire	8,444	-156	-1.8	-767	-8.3
York	3,443	-21	-0.6	-287	-7.7
Craven	671	20	3.1	29	4.5
Hambleton	998	8	0.8	-113	-10.2
Harrogate	1,715	-106	-5.8	-370	-17.7
Richmondshire	510	5	1.0	-73	-12.5
Ryedale	604	4	0.7	-64	-9.6
Scarborough	2,460	-86	-3.4	-18	-0.7
Selby	1,486	-1	-0.1	-158	-9.6

Source: Nomis

Total Number of Claimants



Source: Nomis

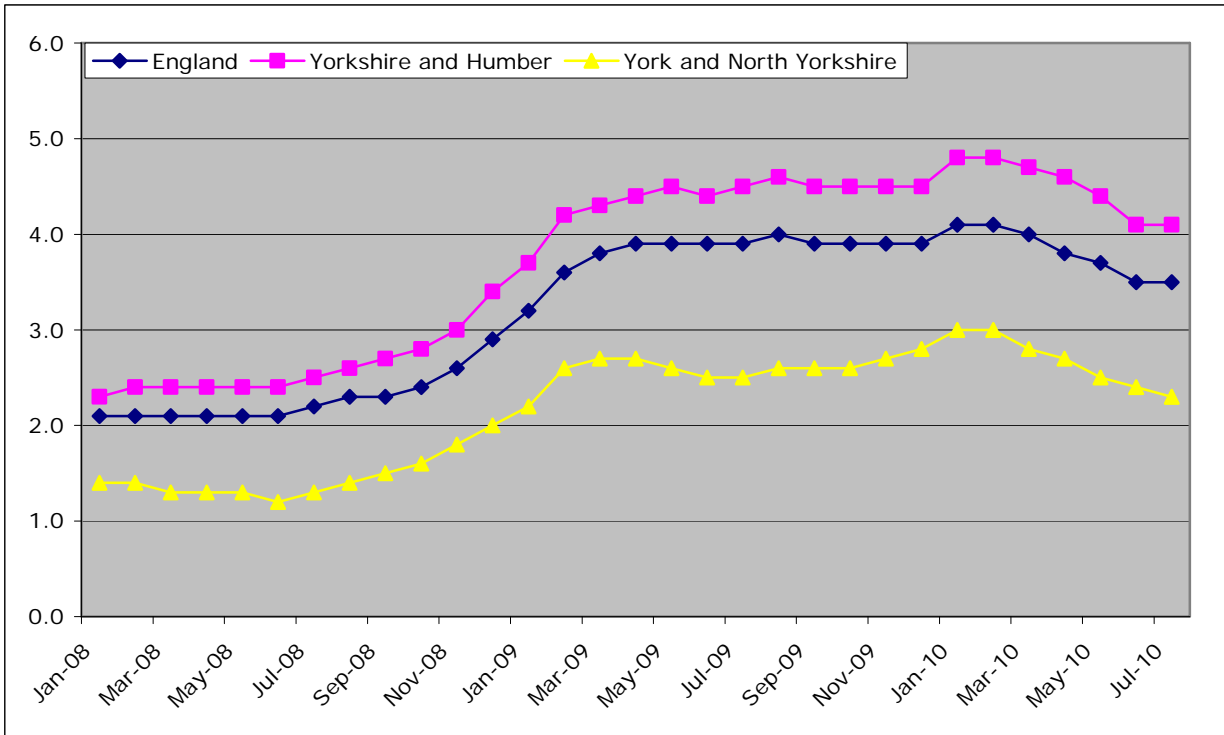
Claimant Count Rate

	July 2010	Monthly Change	Annual Change
England	3.5	0.0	-0.4
Yorkshire and Humber	4.1	0.0	-0.4
York and North Yorkshire	2.3	-0.1	-0.2
North Yorkshire	2.3	0.0	-0.2
York	2.5	-0.1	-0.3
Craven	2.0	0.1	0.1
Hambleton	1.8	0.0	-0.3
Harrogate	1.7	-0.1	-0.4
Richmondshire	1.5	0.0	-0.2
Ryedale	1.8	0.0	-0.2
Scarborough	3.7	-0.1	0.0
Selby	2.8	0.0	-0.3

Source: Nomis

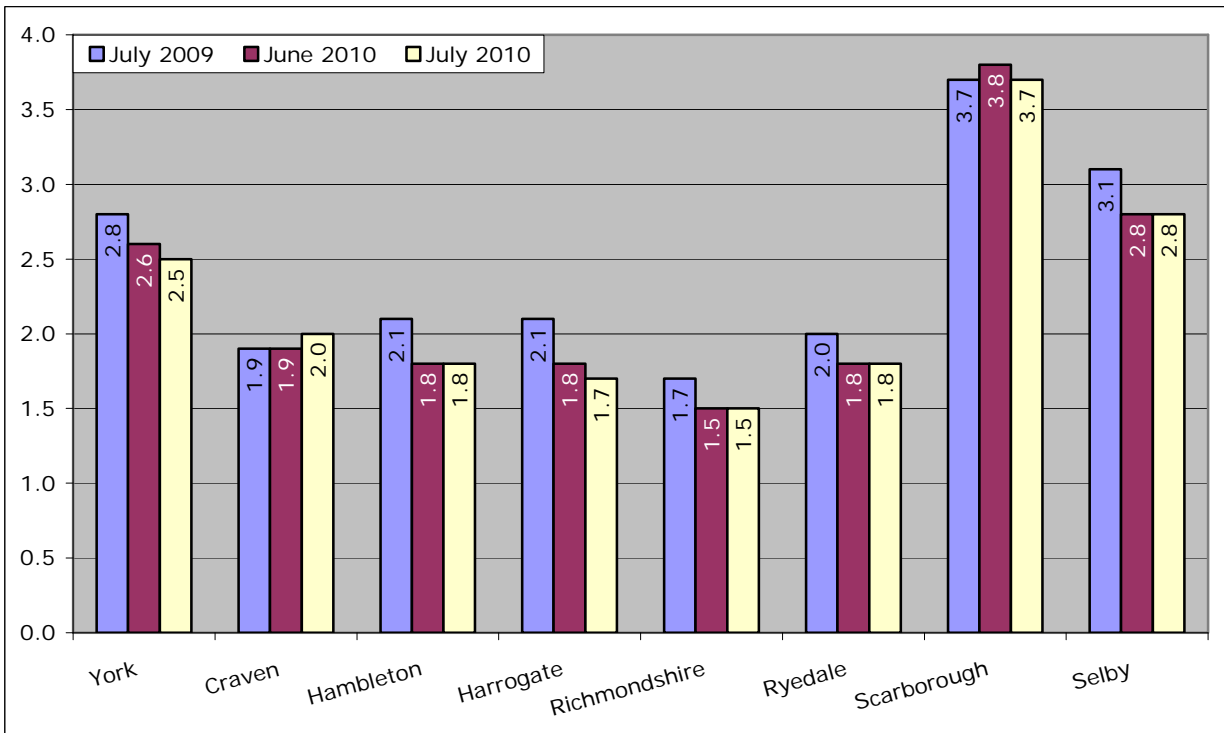
Change is percentage point

Claimant Count Rate



Source: Nomis

Claimant Count Rate



Source: Nomis

Claimant Flows

Claimant Count On-Flow

	July 2010	Monthly Change	Monthly % Change	Annual Change	Annual % Change
England	277,000	44,814	19.3	-30,191	-9.8
Yorkshire and Humber	32,288	5,261	19.5	-3,630	-10.1
York and North Yorkshire	3,206	568	21.5	-481	-13.0
North Yorkshire	2,280	385	20.3	-348	-13.2
York	925	182	24.5	-133	-12.6
Craven	180	48	36.4	-24	-11.8
Hambleton	329	81	32.7	-5	-1.5
Harrogate	483	24	5.2	-158	-24.6
Richmondshire	156	24	18.2	-44	-22.0
Ryedale	159	31	24.2	-5	-3.0
Scarborough	577	88	18.0	-69	-10.7
Selby	395	88	28.7	-45	-10.2

Source: Nomis

Claimant Count Off-Flow

	July 2010	Monthly Change	Monthly % Change	Annual Change	Annual % Change
England	283,893	-2,458	-0.9	-7,306	-2.5
Yorkshire and Humber	33,242	-2,191	-6.2	-1,125	-3.3
York and North Yorkshire	3,331	-163	-4.7	-310	-8.5
North Yorkshire	2,394	-73	-3.0	-274	-10.3
York	937	-90	-8.8	-36	-3.7
Craven	152	5	3.4	-56	-26.9
Hambleton	314	-14	-4.3	-7	-2.2
Harrogate	586	49	9.1	-3	-0.5
Richmondshire	137	-33	-19.4	-79	-36.6
Ryedale	153	-27	-15.0	-23	-13.1
Scarborough	664	-19	-2.8	-36	-5.1
Selby	389	-32	-7.6	-70	-15.3

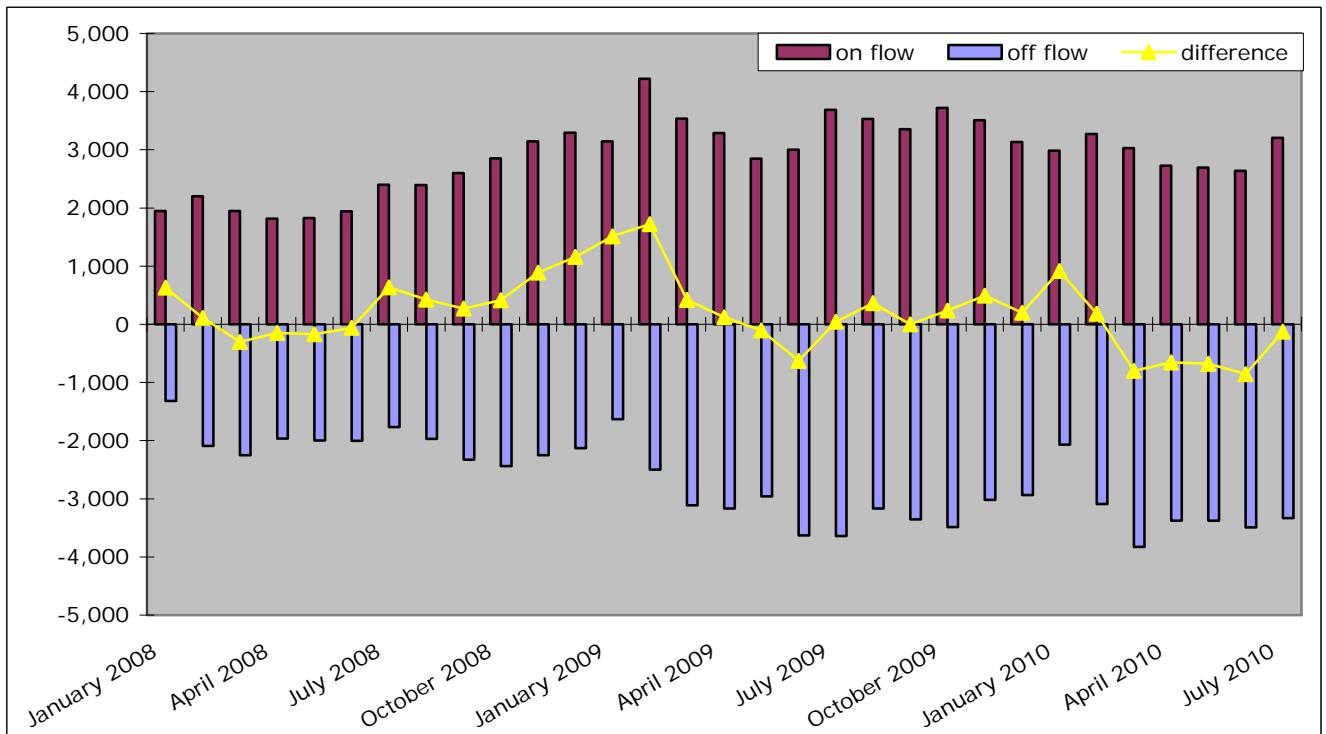
Source: Nomis

Claimant Count On-Flow and Off-Flow

	On Flow	Off Flow	Difference
England	277,000	283,893	-6,893
Yorkshire and Humber	32,288	33,242	-954
York and North Yorkshire	3,206	3,331	-125
North Yorkshire	2,280	2,394	-114
York	925	937	-12
Craven	180	152	28
Hambleton	329	314	15
Harrogate	483	586	-103
Richmondshire	156	137	19
Ryedale	159	153	6
Scarborough	577	664	-87
Selby	395	389	6

Source: Nomis

Claimant Count On flow and Off Flow, York and North Yorkshire, June 2010



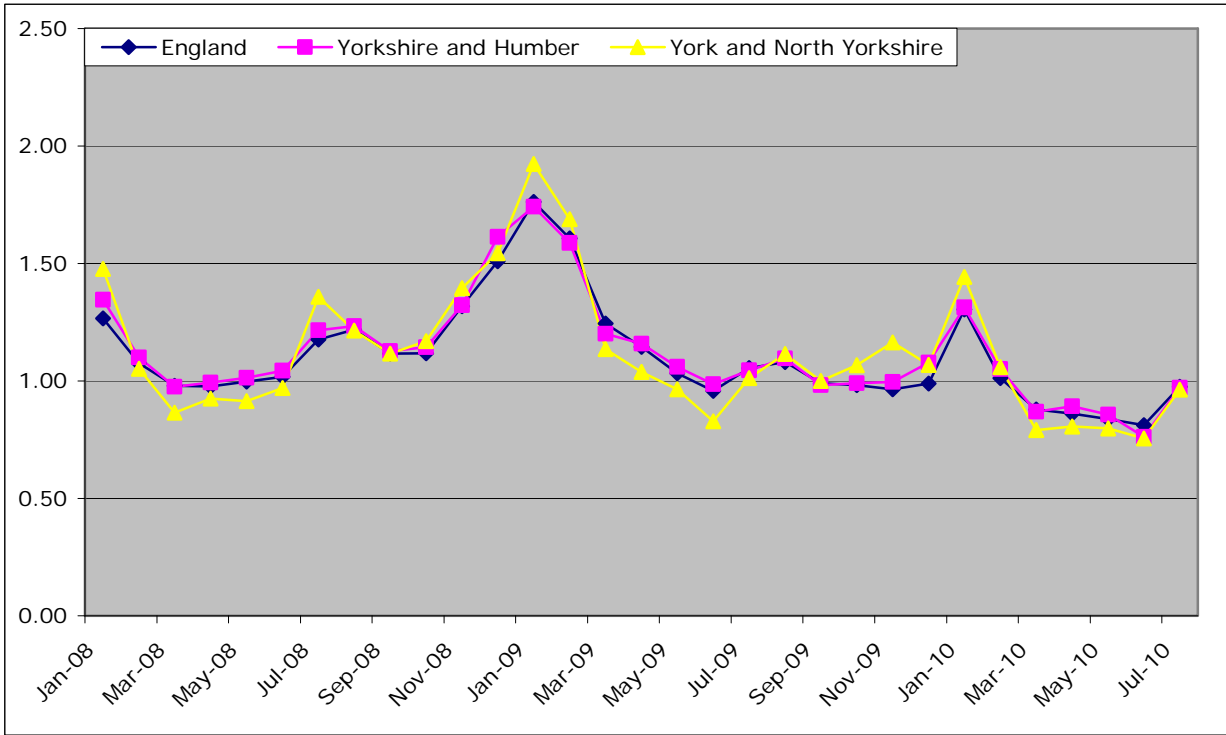
Source: Nomis

Ratio of Claimant Count Off-flow to On-flow

	July 2009	June 2010	July 2010	Monthly Change	Annual Change
England	1.05	0.81	0.98	0.16	-0.08
Yorkshire and Humber	1.05	0.76	0.97	0.21	-0.07
York and North Yorkshire	1.01	0.76	0.96	0.21	-0.05
North Yorkshire	0.99	0.77	0.95	0.18	-0.03
York	1.09	0.72	0.99	0.26	-0.10
Craven	0.98	0.90	1.18	0.29	0.20
Hambleton	1.04	0.76	1.05	0.29	0.01
Harrogate	1.09	0.85	0.82	-0.03	-0.26
Richmondshire	0.93	0.78	1.14	0.36	0.21
Ryedale	0.93	0.71	1.04	0.33	0.11
Scarborough	0.92	0.72	0.87	0.15	-0.05
Selby	0.96	0.73	1.02	0.29	0.06

Source: Nomis

Ratio of Claimant Count On flow to Off flow



Source: Nomis

Claimants by Duration

Total claiming for over 6 months

	July 2010	Monthly Change	Monthly % Change	Annual Change	Annual % Change
England	445,485	-26,105	-5.5	58,330	15.1
Yorkshire and Humber	54,620	-3,250	-5.6	8,330	18.0
York and North Yorkshire	4,410	-305	-6.5	1,065	31.8
North Yorkshire	3,170	-250	-7.3	755	31.3
York	1,240	-50	-3.9	305	32.6
Craven	245	-10	-3.9	95	63.3
Hambleton	290	-40	-12.1	-5	-1.7
Harrogate	610	-65	-9.6	115	23.2
Richmondshire	145	-5	-3.3	10	7.4
Ryedale	245	-15	-5.8	60	32.4
Scarborough	1,075	-80	-6.9	370	52.5
Selby	560	-35	-5.9	110	24.4

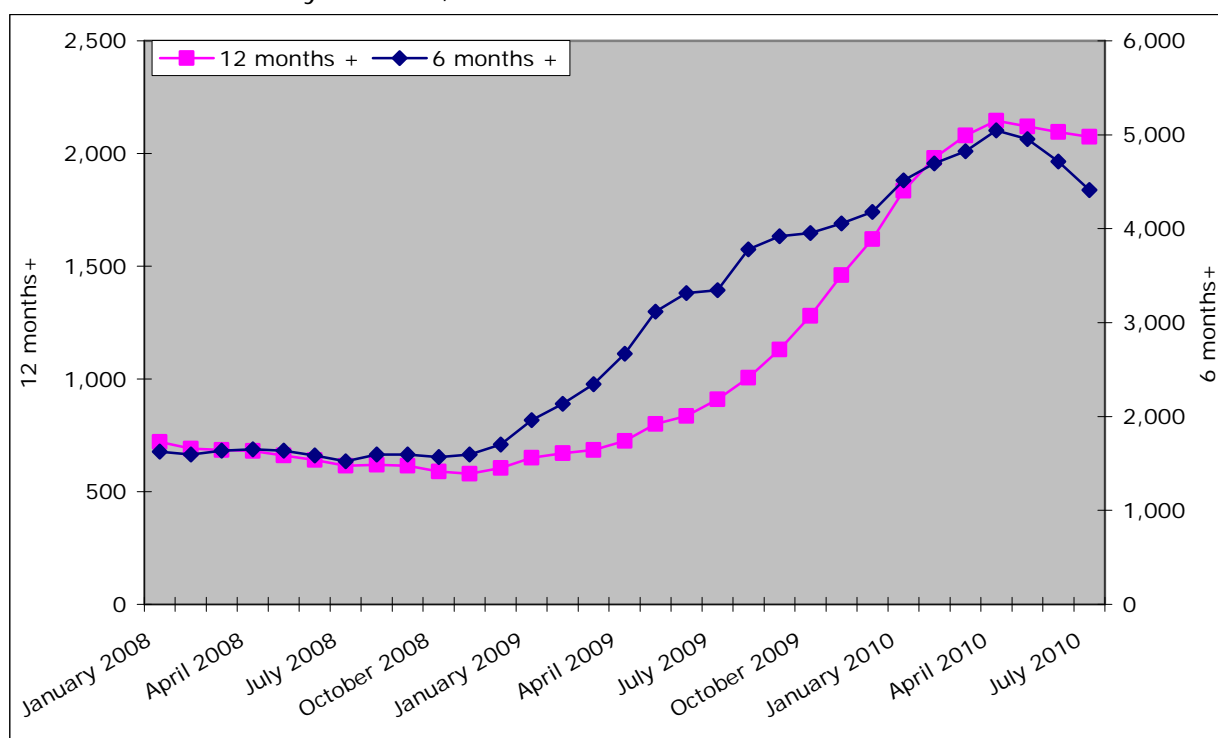
Source: Nomis

Total Claiming for Over 12 months

	July 2010	Monthly Change	Monthly % Change	Annual Change	Annual % Change
England	213,845	-2,380	-1.1	94,665	79.4
Yorkshire and Humber	25,860	-60	-0.2	12,225	89.7
York and North Yorkshire	2,075	-20	-1.0	1,165	128.0
North Yorkshire	1,475	-30	-2.0	810	121.8
York	600	10	1.7	355	144.9
Craven	105	5	5.0	60	133.3
Hambleton	150	0	0.0	75	100.0
Harrogate	290	-15	-4.9	145	100.0
Richmondshire	70	5	7.7	30	75.0
Ryedale	115	-10	-8.0	45	64.3
Scarborough	460	-5	-1.1	255	124.4
Selby	290	-5	-1.7	200	222.2

Source: Nomis

Number of claimants by duration, York and North Yorkshire



Source: Nomis

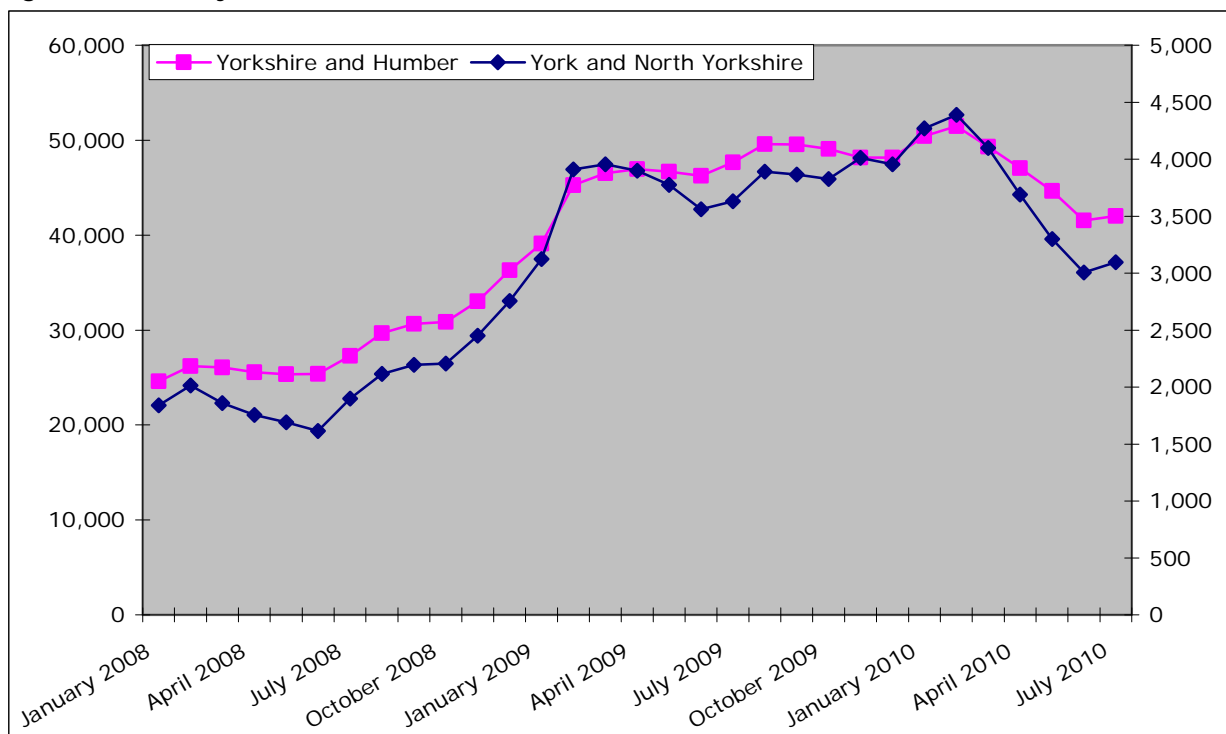
Claimants by Age

Claimant Count 18-24 year olds

	July 2010	Monthly Change	Monthly % Change	Annual Change	Annual % Change
England	324,845	5,950	1.9	-58,925	-15.4
Yorkshire and Humber	42,020	470	1.1	-5,650	-11.9
York and North Yorkshire	3,095	90	3.0	-535	-14.7
North Yorkshire	2,160	40	1.9	-355	-14.1
York	935	55	6.3	-175	-15.8
Craven	195	15	8.3	35	21.9
Hambleton	240	5	2.1	-95	-28.4
Harrogate	380	-5	-1.3	-150	-28.3
Richmondshire	155	10	6.9	-15	-8.8
Ryedale	160	15	10.3	-30	-15.8
Scarborough	635	-5	-0.8	-25	-3.8
Selby	400	5	1.3	-65	-14.0

Source: Nomis

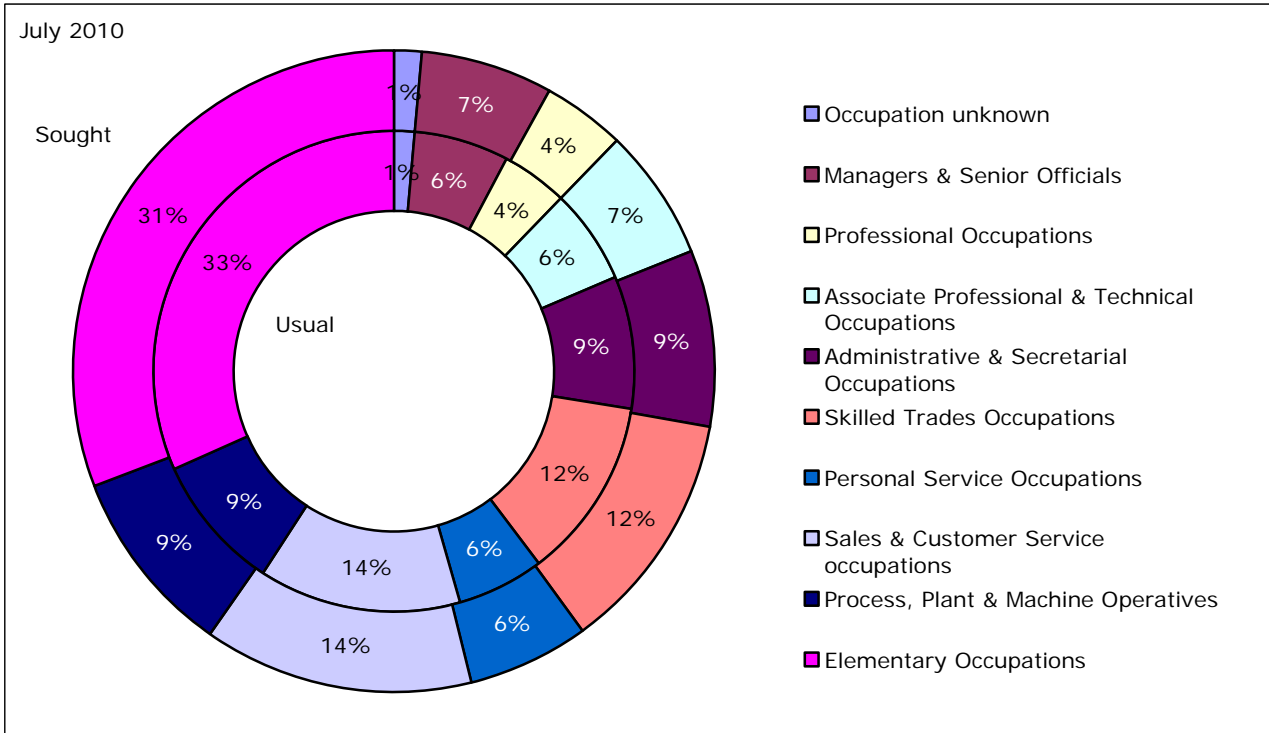
Figure: 18 – 24 yr old claimants



Source: Nomis

Claimants by Occupation

Claimants by Sought and Usual occupation, York and North Yorkshire, June 2010



Source: Nomis

Work Related Benefits

Number of people claiming work related benefits

	February 2010	Quarterly Change		Annual Change	
England	4,203,450	39,250	0.9%	72,600	1.8%
Yorkshire and Humber	466,630	5,710	1.2%	12,160	2.7%
York and North Yorkshire	42,680	610	1.4%	1,150	2.8%
North Yorkshire	31,840	400	1.3%	630	2.0%
York	10,840	210	2.0%	520	5.0%
Craven	2,470	-20	-0.8%	40	1.6%
Hambleton	3,670	20	0.5%	-40	-1.1%
Harrogate	6,710	30	0.4%	200	3.1%
Richmondshire	1,980	-30	-1.5%	-50	-2.5%
Ryedale	2,350	100	4.4%	20	0.9%
Scarborough	9,920	160	1.6%	290	3.0%
Selby	4,740	150	3.3%	170	3.7%

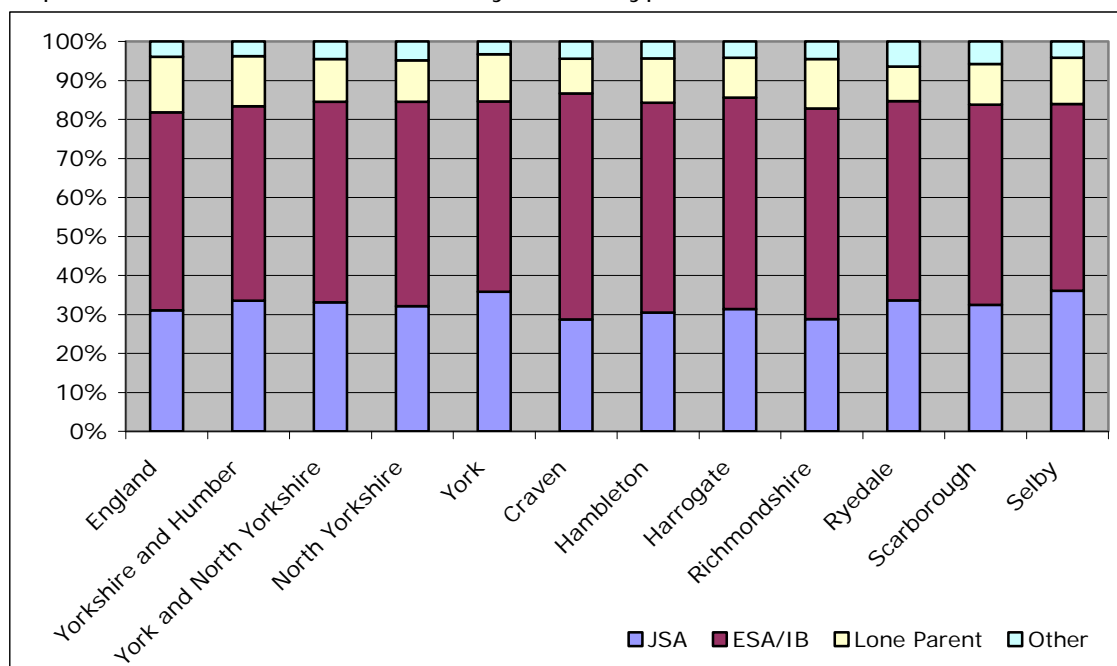
Source: Work and Pensions Longitudinal Study via Nomis

Proportion of the working age population (16-64) claiming out of work benefits

	February 2010	Quarterly Change		Annual Change	
England	12.5		0.1		0.2
Yorkshire and Humber	13.6		0.2		0.4
York and North Yorkshire	8.4		0.2		0.3
North Yorkshire	8.5		0.1		0.2
York	8.0		0.1		0.4
Craven	7.3		-0.1		0.1
Hambleton	6.8		0		-0.1
Harrogate	6.7		0		0.2
Richmondshire	5.7		-0.1		-0.1
Ryedale	7.2		0.3		0.1
Scarborough	15.0		0.3		0.5
Selby	8.9		0.3		0.3

Source: Work and Pensions Longitudinal Study via Nomis

Proportion of work related benefits by benefit type



Source: Work and Pensions Longitudinal Study via Nomis

ILO Employment Rate

Working Age Employment Rate in York and North Yorkshire

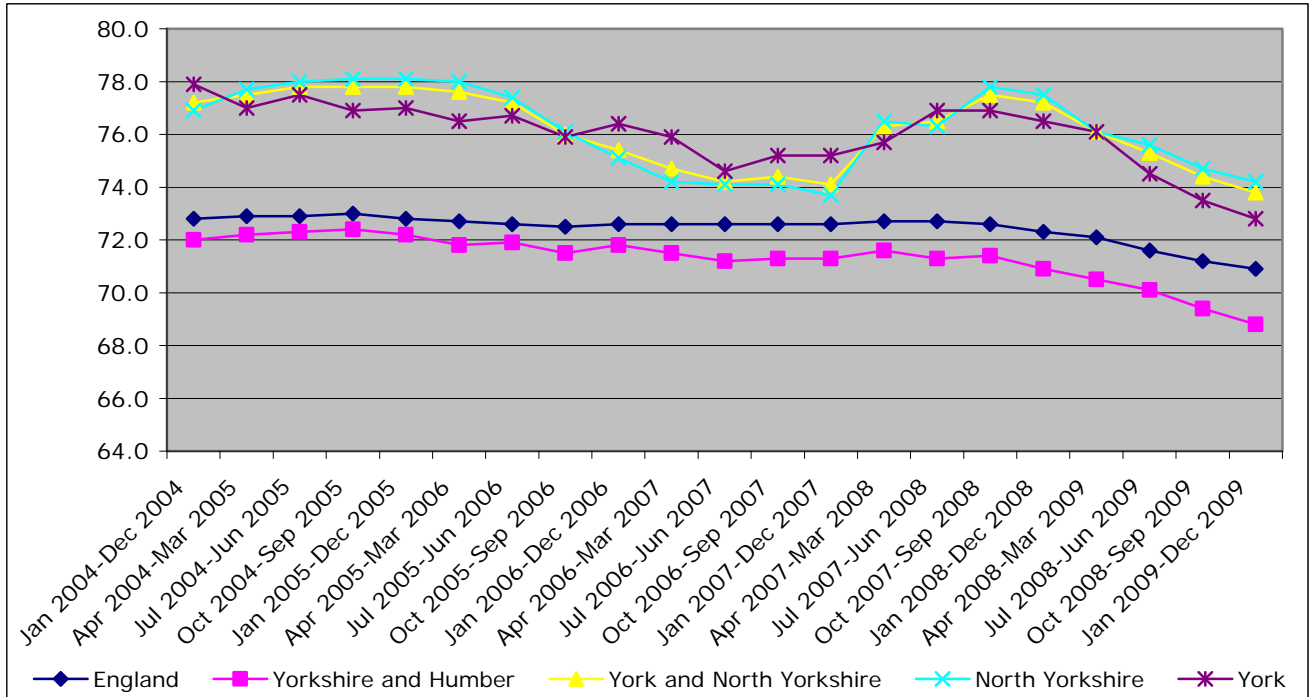
	Jan 2009 - Dec 2009	Change on quarter	Change on year
England	70.9	-0.3	-1.4
Yorkshire and Humber	68.8	-0.6	-2.1
York and North Yorkshire	73.8	-0.6	-3.4
North Yorkshire	74.2	-0.5	-3.3
York	72.8	-0.7	-3.7

Source: Annual Population Survey

Change is percentage point

N.B. Confidence intervals at District level are unreliable

Working Age Employment Rate



Source: Annual Population Survey

ILO Unemployment Rate

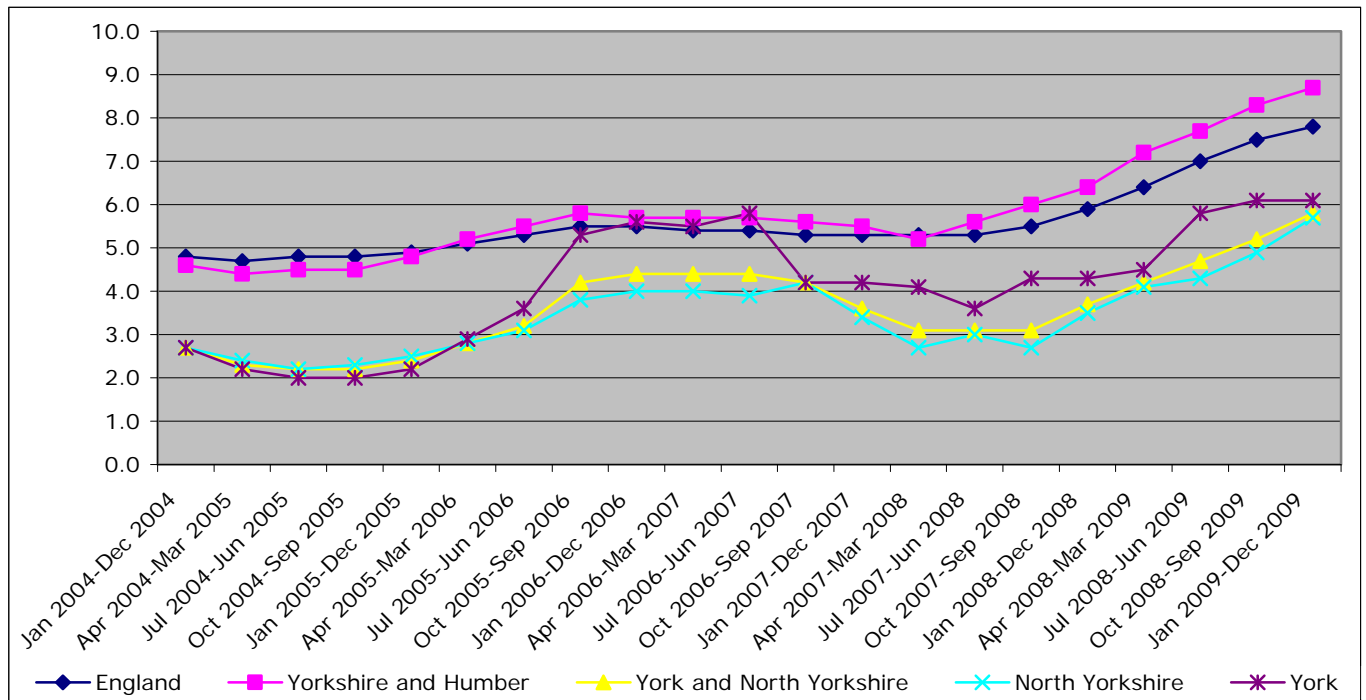
Working age unemployment rate

	Jan 2009 - Dec 2009	Change on quarter	Change on year
England	7.8	0.3	1.9
Yorkshire and Humber	8.7	0.4	2.3
York and North Yorkshire	5.8	0.6	2.1
North Yorkshire	5.7	0.8	2.2
York	6.1	0.0	1.8

Source: Annual Population Survey

N.B. Data is either disclosive or confidence intervals are unreliable at District level.

Working Age Unemployment Rate



Source: Annual Population Survey

Business Activity

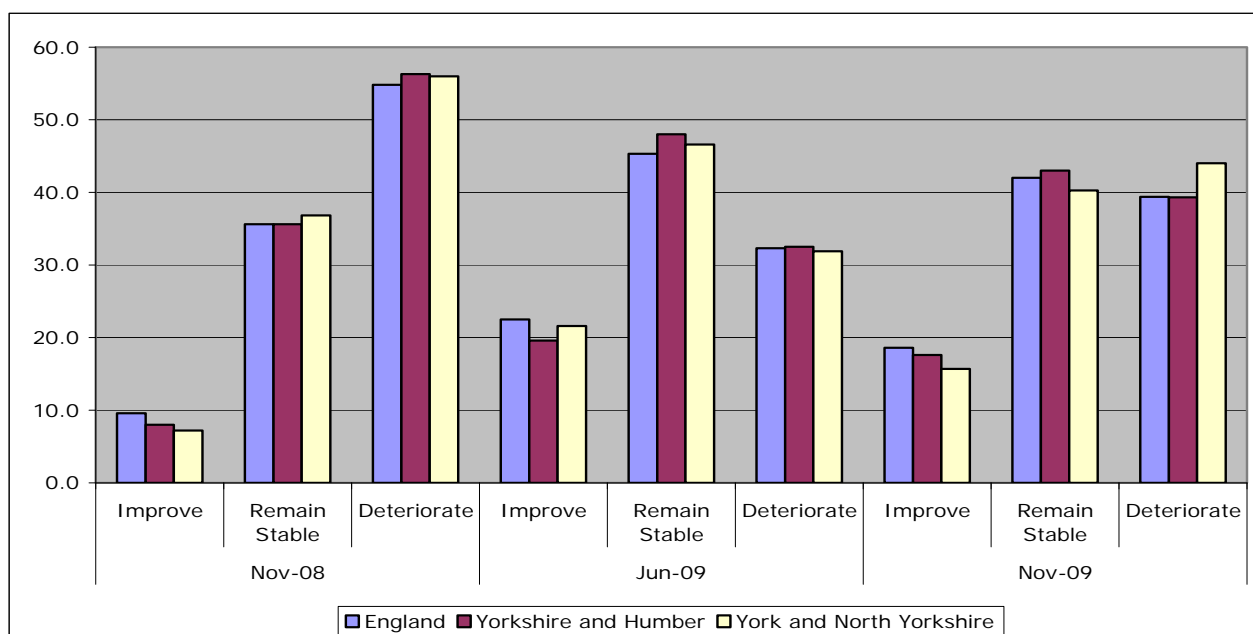
Business Confidence

The National Business Survey is a large scale research project conducted by Ipsos Mori on behalf of the RDA Network and Invest Northern Ireland. It explores perceptions of businesses across England and Northern Ireland, on current and recent business conditions as well as looking forward to potential issues and views on projected change over the coming months. The survey asks a series of questions on business confidence, a number of which are presented here.

Over the next 12 months do you expect the business climate in which your business operates to generally improve, remain stable, or deteriorate?

	Nov-08			Jun-09			Nov-09		
	Improve	Remain Stable	Deteriorate	Improve	Remain Stable	Deteriorate	Improve	Remain Stable	Deteriorate
England	9.6	35.6	54.8	22.5	45.3	32.3	18.6%	42.0%	39.4%
Yorkshire and Humber	8.0	35.6	56.3	19.6	48.0	32.5	17.6%	43.0%	39.3%
York and North Yorkshire	7.2	36.8	56.0	21.6	46.6	31.9	15.7%	40.3%	44.0%

Source: 'National Business Survey, November 2009, (Ipsos Mori on behalf of England's Regional Development Agencies and Invest Northern Ireland)'

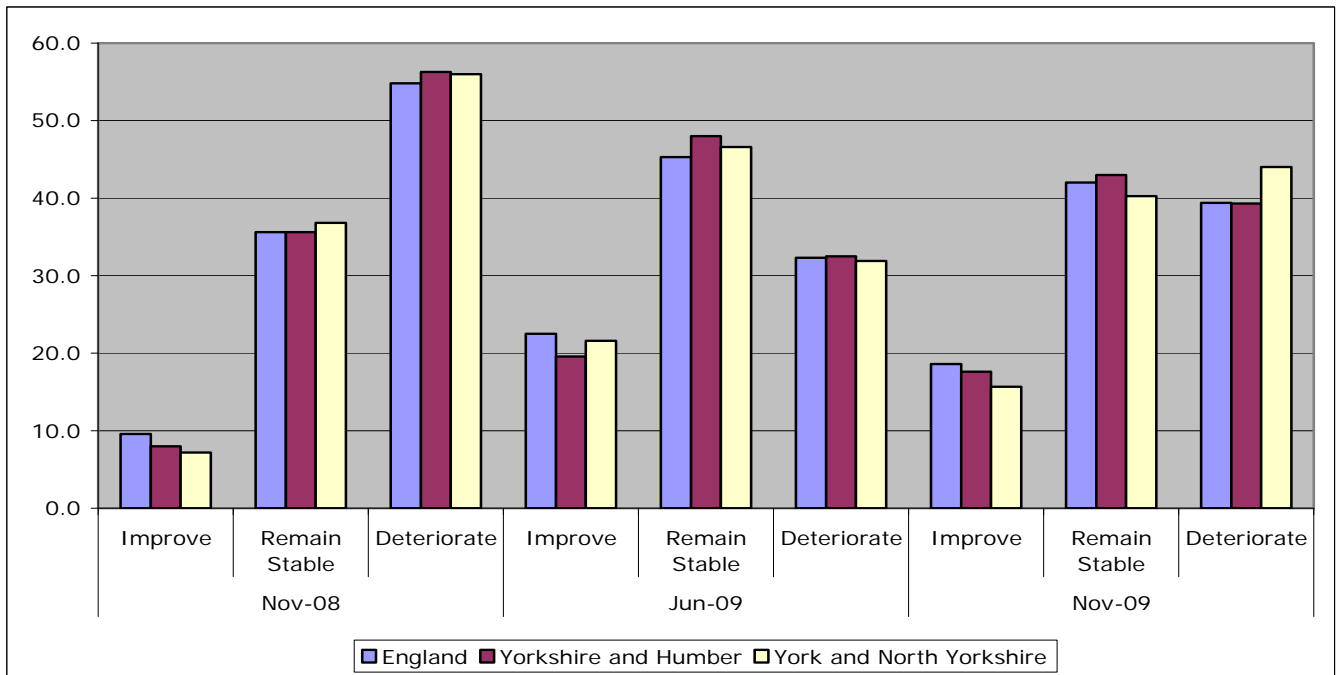


Source: 'National Business Survey, November 2009, (Ipsos Mori on behalf of England's Regional Development Agencies and Invest Northern Ireland)'

What has been the trend in the last 12 months with regard to numbers employed?

	Nov-08				Jun-09				Nov-09			
	Higher	Same	Lower	n/a	Higher	Same	Lower	n/a	Higher	Same	Lower	n/a
England	11.9	49.1	22.3	16.7	9.0	46.4	32.2	12.4	12.6%	46.5%	25.6%	15.3%
Yorkshire and Humber	13.4	46.9	24.4	15.2	7.1	44.5	29.8	18.6	16.3%	50.7%	19.2%	13.8%
York and North Yorkshire	12.8	43.9	20.0	23.3	6.3	50.9	24.3	18.5	14.5%	48.6%	22.4%	14.6%

Source: 'National Business Survey, June 2009, (Ipsos Mori on behalf of England's Regional Development Agencies and Invest Northern Ireland)'



Source: 'National Business Survey, November 2009, (Ipsos Mori on behalf of England's Regional Development Agencies and Invest Northern Ireland)'

N.B. The National Business Survey data is a sample and subject to some survey error. Sample sizes are smaller at more local levels therefore the confidence intervals are higher. Sample size can vary over the different time periods.

New Businesses

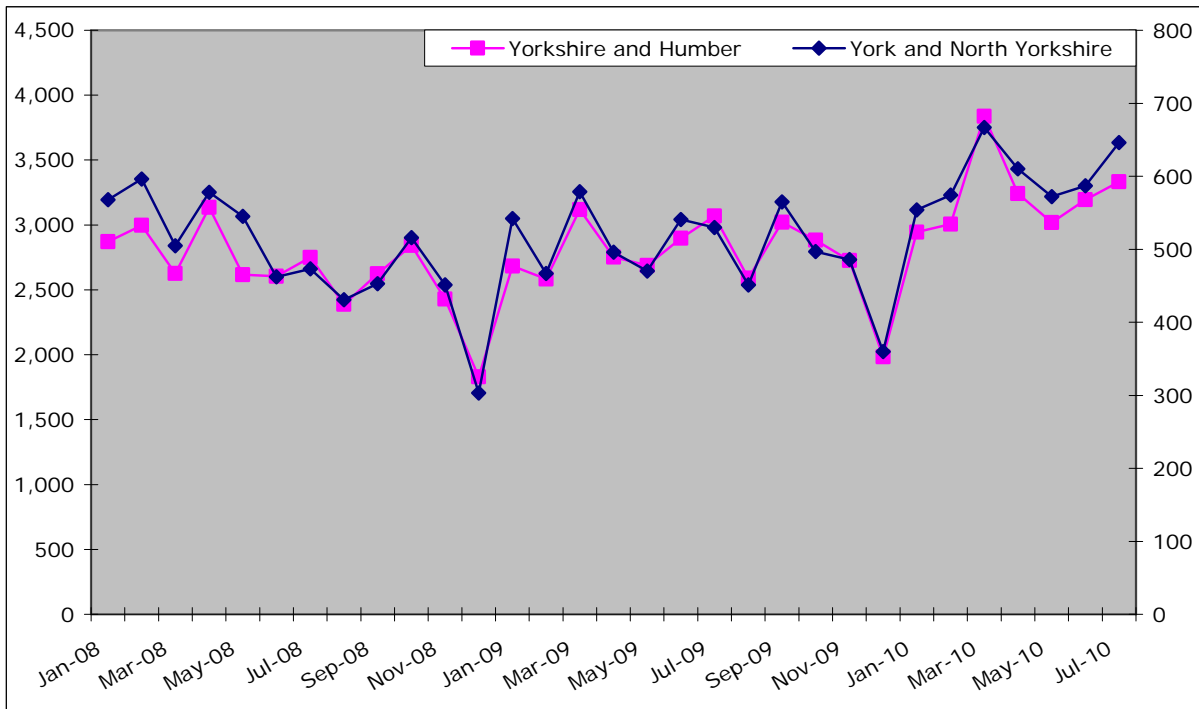
Information from the BankSearch Start up Interactive Database (IADB) provides a proxy to the number of new businesses being created in the sub region. The database provides information from Barclays, Co-Operative Bank, HSBC, Lloyds Banking Group, Royal Bank of Scotland and Santander. A 'Start-up' reflects the opening of a first current account from a small business banking product range. They represent businesses new to banking or those previously operated through a personal account. The data exclude businesses operating through personal accounts, those without banking relationships or those banking with other institutions. A small business is defined as having, or expected to have, annual debit turnover (i.e. outward payments from their accounts) of up to £1m per annum.

Number of new bank accounts

	July 2010	Monthly Change		Annual Change	
England	41,683	1,149	2.8%	3,753	9.9%
Yorkshire and Humber	3,332	137	4.3%	264	8.6%
York and North Yorkshire	646	59	10.1%	116	21.9%
North Yorkshire	483	36	8.1%	66	15.8%
York	163	23	16.4%	50	44.2%
Craven	53	13	32.5%	22	71.0%
Hambleton	76	15	24.6%	15	24.6%
Harrogate	150	0	0.0%	24	19.0%
Richmondshire	38	13	52.0%	1	2.7%
Ryedale	37	-1	-2.6%	6	19.4%
Scarborough	67	-10	-13.0%	4	6.3%
Selby	62	6	10.7%	-6	-8.8%

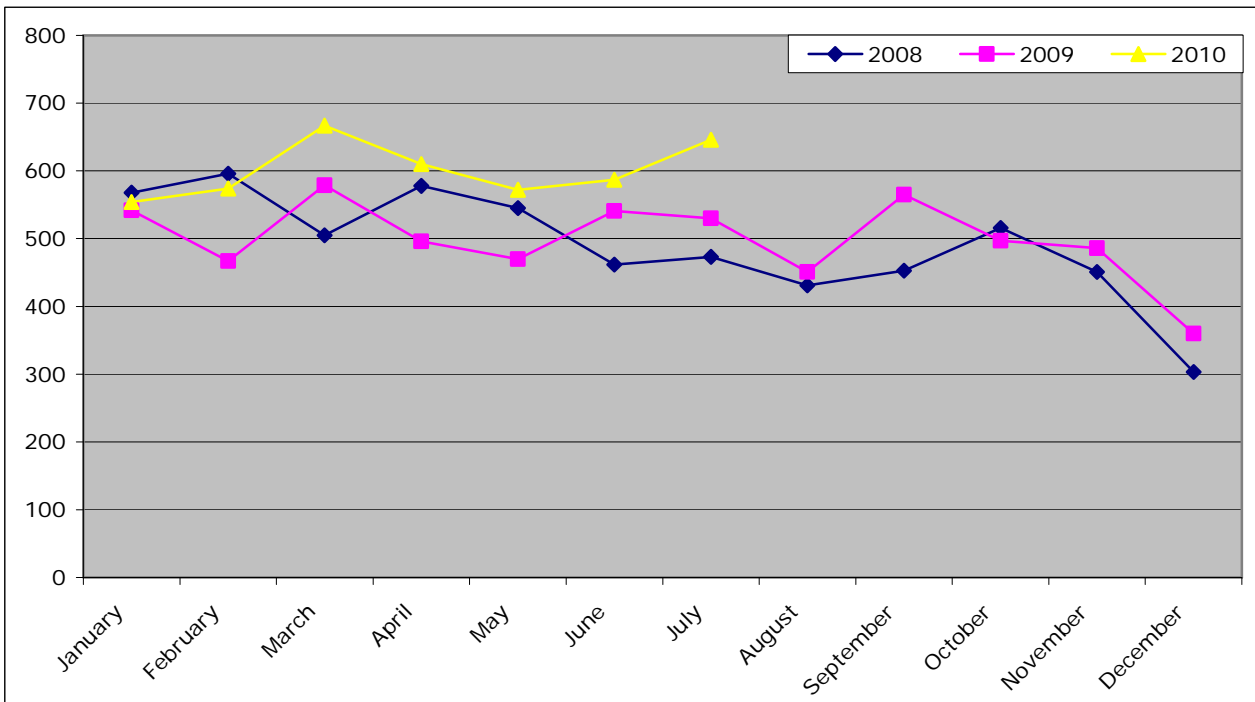
Source: BankSearch Ltd

Figure: Number of new bank accounts



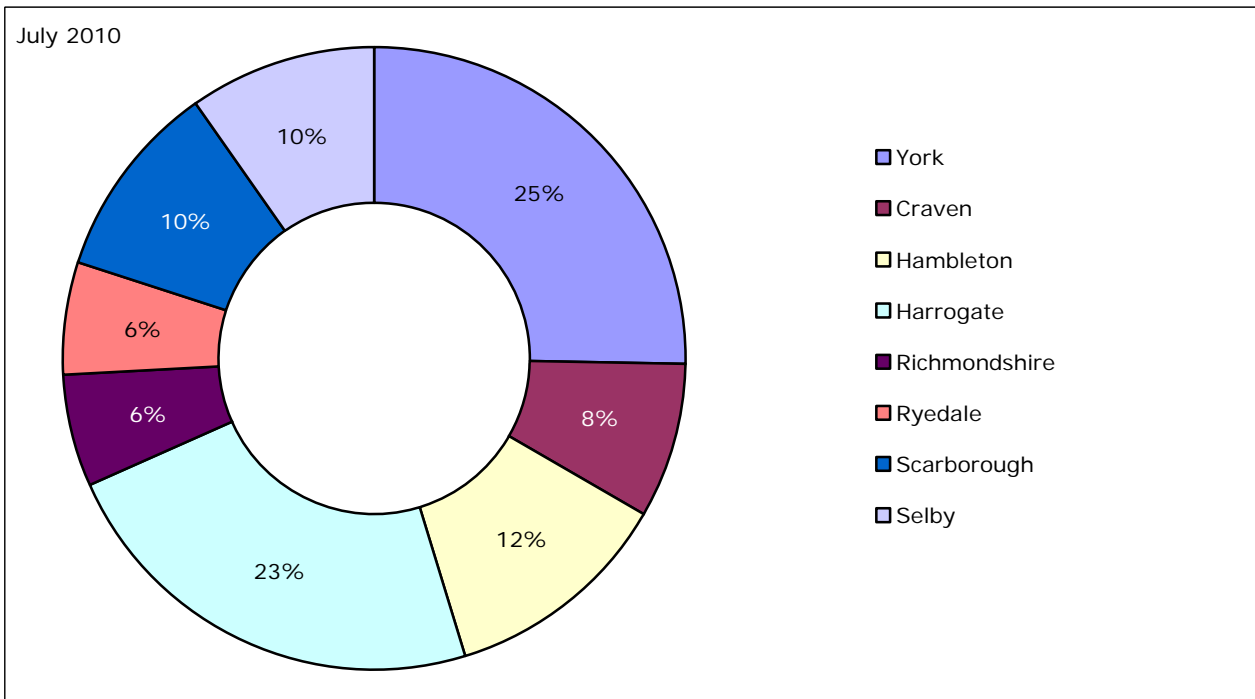
Source: BankSearch Ltd

Number of new bank accounts by year, York and North Yorkshire, 2008-2010



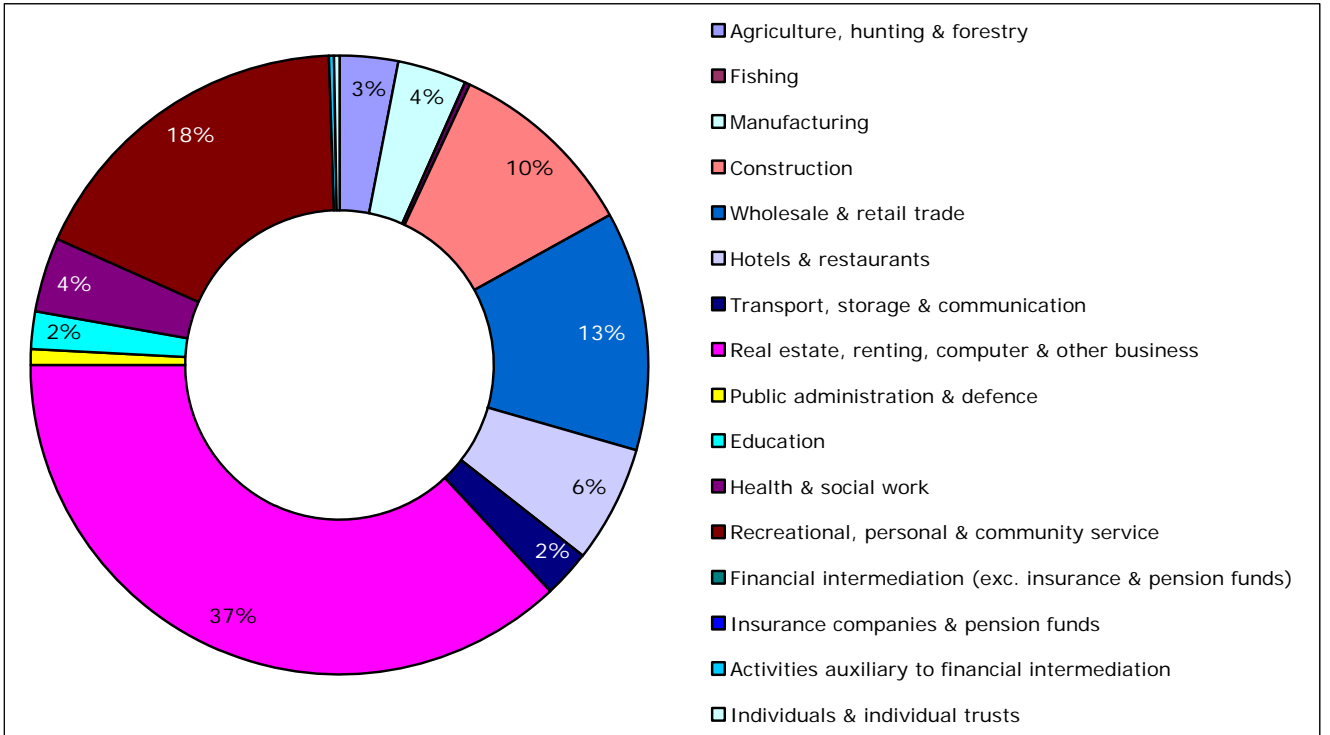
Source: BankSearch Ltd

Proportion of new bank accounts by Local Authority District, York and North Yorkshire



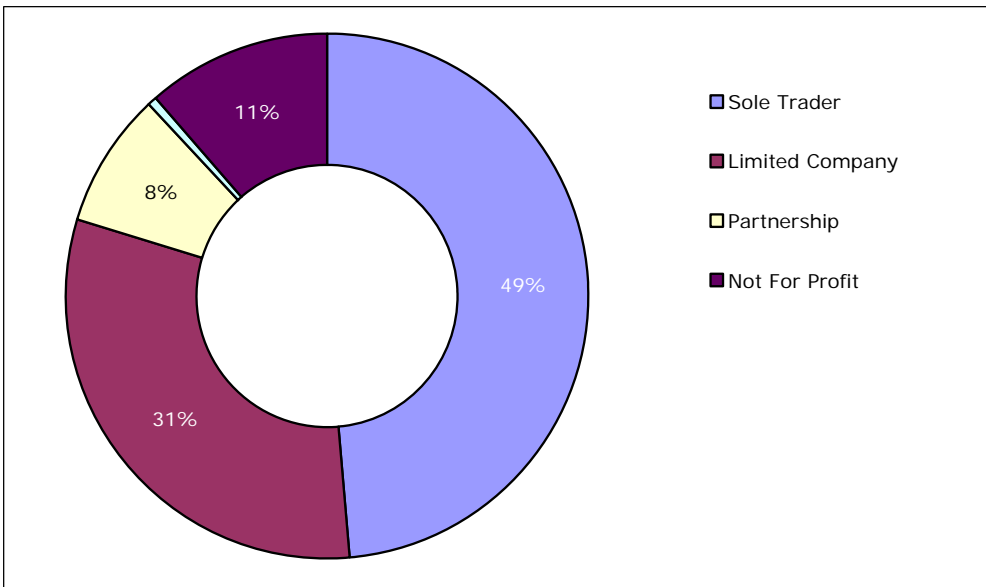
Source: BankSearch Ltd

New bank accounts by industry



Source: BankSearch Ltd

New bank accounts by legal status



Source: BankSearch Ltd

Housing

Land Registry House Price Index

Average Price

	July 2010	Monthly Change		Annual Change	
		No.	%	No.	%
England and Wales	166,798	690	0.4	10,431	6.7
Yorkshire and Humber	127,919	1294	1.0	4,189	3.4
North Yorkshire	178,127	-145	-0.1	10,439	6.2
York	183,059	-22	0.0	14,165	8.4

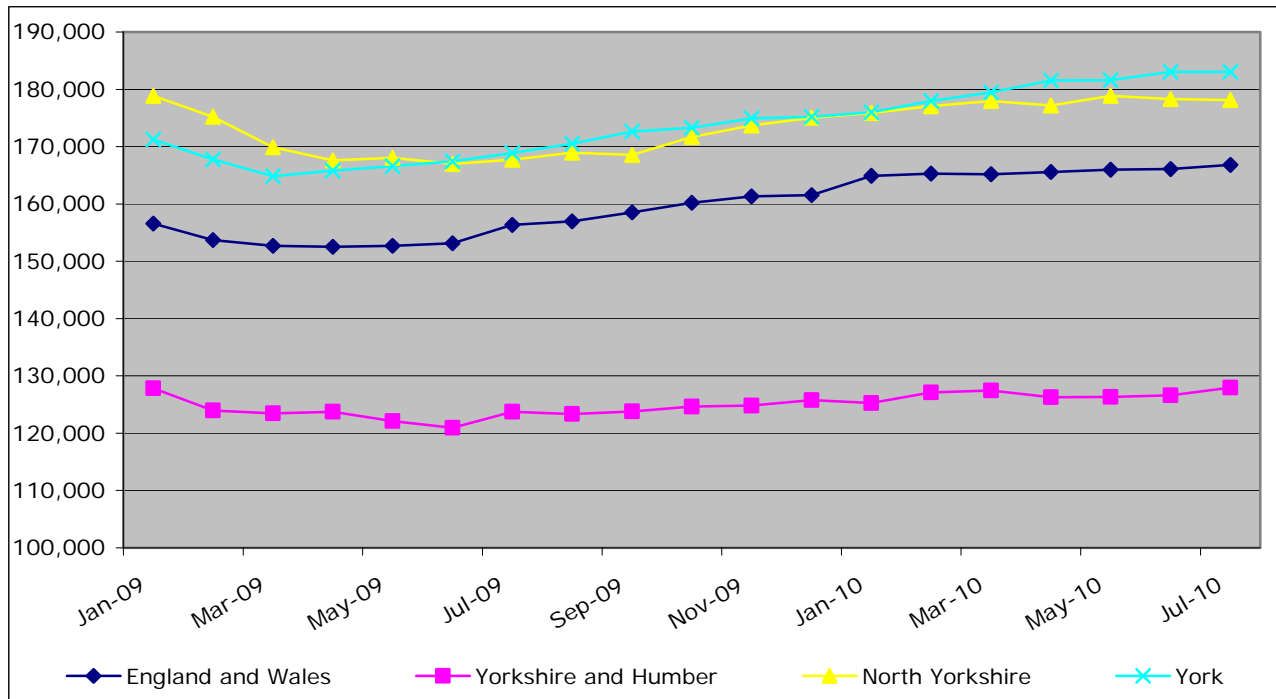
Source: Land Registry, House Price Index

Sales Volume

	May 2010	Monthly Change		Annual Change	
		No.	%	No.	%
England and Wales	49,412	-1,402	-2.8	3,598	7.9
Yorkshire and Humber	4,434	194	4.6	362	8.9
North Yorkshire	615	-47	-7.1	64	11.6
York	208	-14	-6.3	25	13.7

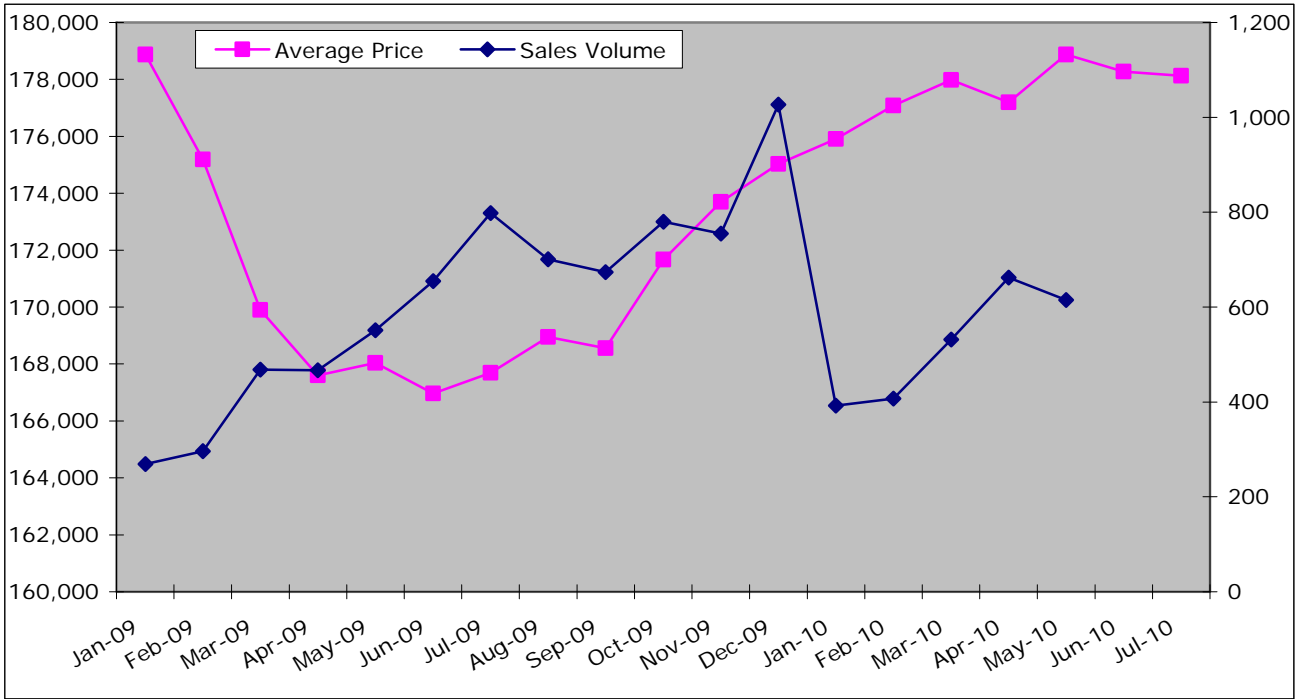
Source: Land Registry, House Price Index

Figure: Average Prices with national and regional comparison



Source: Land Registry, House Price Index

Figure: North Yorkshire – Average Price & Sales Volume



Source: Land Registry, House Price Index

Figure: York – Average Price & Sales Volume



Source: Land Registry, House Price Index

Mean House Prices

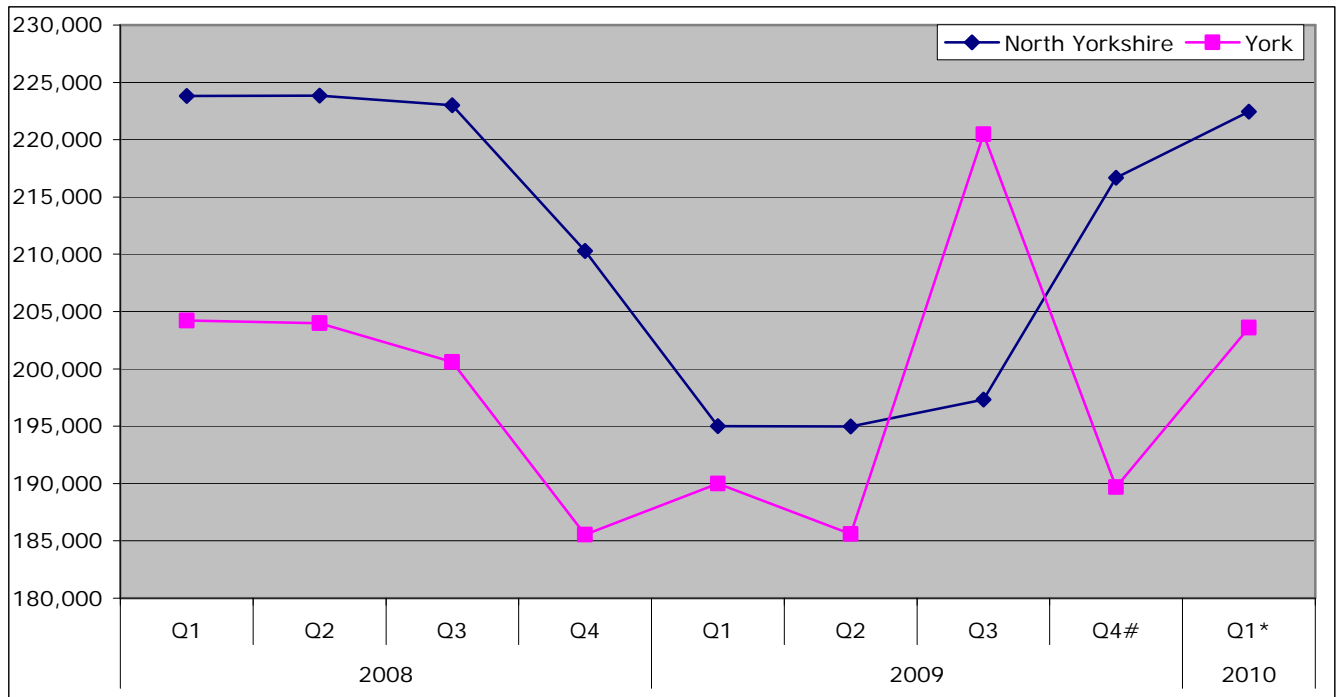
	Quarter 1 2010*	Change on previous quarter		Change on previous year	
England	238,341	£16,262	7.3%	£37,802	18.9%
Yorkshire & Humber	158,069	-£3,090	-1.9%	£17,217	12.2%
York & North Yorkshire	216,312	£5,764	2.7%	£24,380	12.7%
North Yorkshire	222,428	£5,741	2.6%	£27,409	14.1%
York	203,587	£13,896	7.3%	£13,593	7.2%
Craven	226,734	£24,387	12.1%	£58,367	34.7%
Hambleton	228,457	-£4,803	-2.1%	£31,048	15.7%
Harrogate	275,181	£15,740	6.1%	£35,208	14.7%
Richmondshire	238,311	£10,010	4.4%	£29,801	14.3%
Ryedale	211,327	-£2,674	-1.2%	£1,174	0.6%
Scarborough	161,251	-£8,440	-5.0%	£10,494	7.0%
Selby	185,646	-£2,005	-1.1%	£15,358	9.0%

Source: DCLG

Data has been revised

* Data is provisional

Figure: Mean House Prices, North Yorkshire and York



Source: DCLG

Data has been revised

* Data is provisional

Property Sales

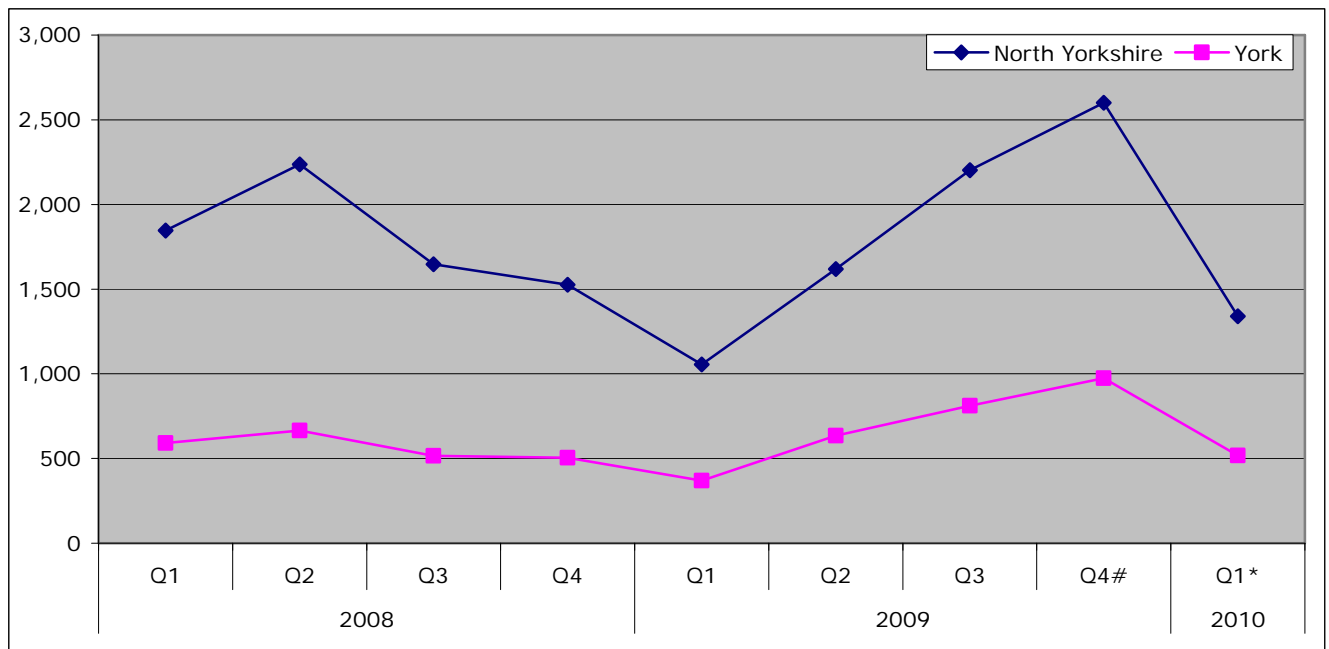
	Quarter 1 2010*	Change on previous quarter		Change on previous year	
England	121,558	-74,681	-38.1%	34,269	39.3%
Yorkshire & Humber	10,390	-6,871	-39.8%	1,853	21.7%
York & North Yorkshire	1,858	-1,717	-48.0%	434	30.5%
North Yorkshire	1,340	-1,261	-48.5%	285	27.0%
York	518	-456	-46.8%	149	40.4%
Craven	139	-108	-43.7%	47	51.1%
Hambleton	176	-180	-50.6%	31	21.4%
Harrogate	403	-328	-44.9%	87	27.5%
Richmondshire	66	-98	-59.8%	5	8.2%
Ryedale	111	-96	-46.4%	44	65.7%
Scarborough	261	-237	-47.6%	21	8.8%
Selby	184	-214	-53.8%	50	37.3%

Source: DCLG

Data has been revised

* Data is provisional

Figure: Number of Property Sales, North Yorkshire and York



Source: DCLG

Data has been revised

* Data is provisional

Mortgage and Landlord Possession Claims/Orders

Mortgage and Landlord possession claims and orders have recently been revised to Local Authority Level, data for which are outlined below. All figures are rounded to the nearest 5. Where the number of claims issued is either 7 or less the number is not provided and is noted with a (-)

Mortgage Possession Claims Issued

	Q2 2010*	Quarterly Change		Annual Change	
England	17,110	-360	-2.1%	-7,485	-30.4%
Yorkshire and Humber	2,130	25	1.2%	-635	-23.0%
York and North Yorkshire	180	15	9.1%	-45	-20.0%
North Yorkshire	140	0	0.0%	-50	-26.3%
York	30	0	0.0%	-15	-33.3%
Craven	15	0	0.0%	-5	-25.0%
Hambleton	15	-5	-25.0%	-5	-25.0%
Harrogate	35	5	16.7%	-5	-12.5%
Richmondshire	15	5	50.0%	-5	-25.0%
Ryedale	10	-	-	-	-
Scarborough	25	-5	-16.7%	-15	-37.5%
Selby	35	5	16.7%	-5	-12.5%

Source: Ministry of Justice

Mortgage Possession Orders Issued

	Q2 2010*	Quarterly Change		Annual Change	
England	12,645	-490	-3.7%	-5,185	-29.1%
Yorkshire and Humber	1,465	-200	-12.0%	-445	-23.3%
York and North Yorkshire	95	-25	-20.8%	-60	-38.7%
North Yorkshire	90	-15	-14.3%	-35	-28.0%
York	20	5	33.3%	-15	-42.9%
Craven	-	-	-	-	-
Hambleton	-	-	-	-	-
Harrogate	25	5	25.0%	-5	-16.7%
Richmondshire	10	0	0.0%	0	0.0%
Ryedale	-	-	-	-	-
Scarborough	20	5	33.3%	0	0.0%
Selby	20	0	0.0%	-10	-33.3%

Source: Ministry of Justice

Landlord Possession Claims issued

	Q2 2010*	Quarterly Change		Annual Change	
England	29,955	-3,640	-10.8%	-1,015	-3.3%
Yorkshire and Humber	2,120	-180	-7.8%	-225	-9.6%
York and North Yorkshire	225	-20	-8.2%	-25	-10.0%
North Yorkshire	155	-5	-3.1%	-20	-11.4%
York	70	-15	-17.6%	-5	-6.7%
Craven	10	-5	-33.3%	0	0.0%
Hambleton	10	-15	-60.0%	-10	-50.0%
Harrogate	35	5	16.7%	-5	-12.5%
Richmondshire	15	0	0.0%	-5	-25.0%
Ryedale	10	0	0.0%	-5	-33.3%
Scarborough	55	15	37.5%	10	22.2%
Selby	20	-5	-20.0%	-5	-20.0%

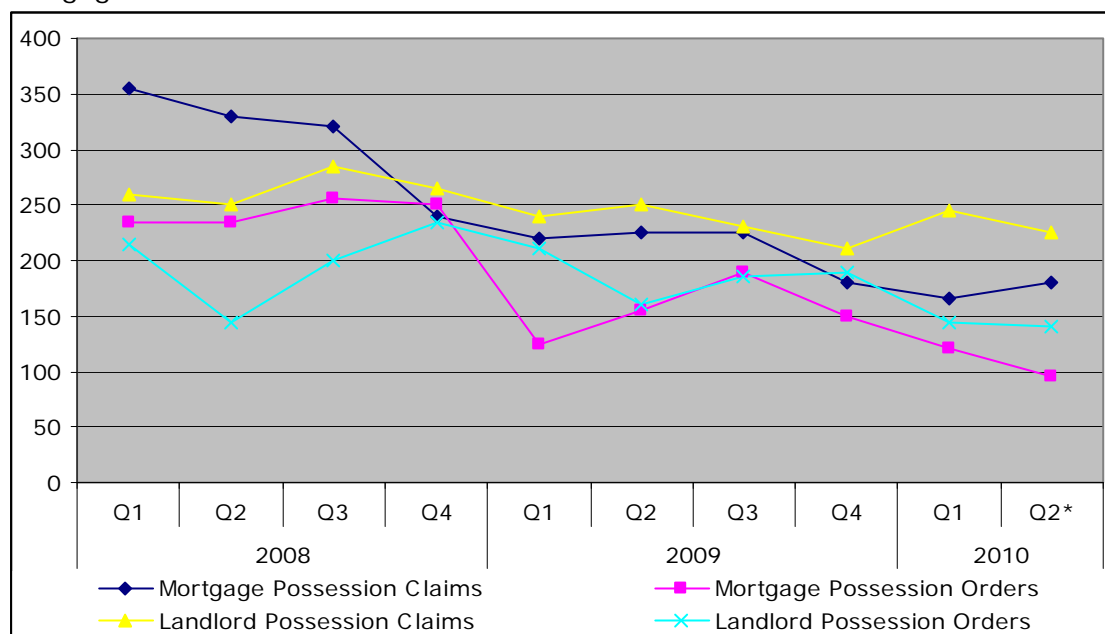
Source: Ministry of Justice

Landlord Possession Orders issued

	Q2 2010*	Quarterly Change		Annual Change	
England	21,220	-300	-1.4%	95	0.4%
Yorkshire and Humber	1,695	50	3.0%	40	2.4%
York and North Yorkshire	140	-5	-3.4%	-20	-12.5%
North Yorkshire	90	-15	-14.3%	-5	-5.3%
York	55	15	37.5%	-10	-15.4%
Craven	-	-	-	-	-
Hambleton	10	-5	-33.3%	0	0.0%
Harrogate	20	5	33.3%	0	0.0%
Richmondshire	10	0	0.0%	0	0.0%
Ryedale	-	-	-	-	-
Scarborough	25	-10	-28.6%	5	25.0%
Selby	20	0	0.0%	-5	-20.0%

Source: Ministry of Justice

Mortgage/Landlord Possession Orders and Claims in York and North Yorkshire



Source: Ministry of Justice

Planning

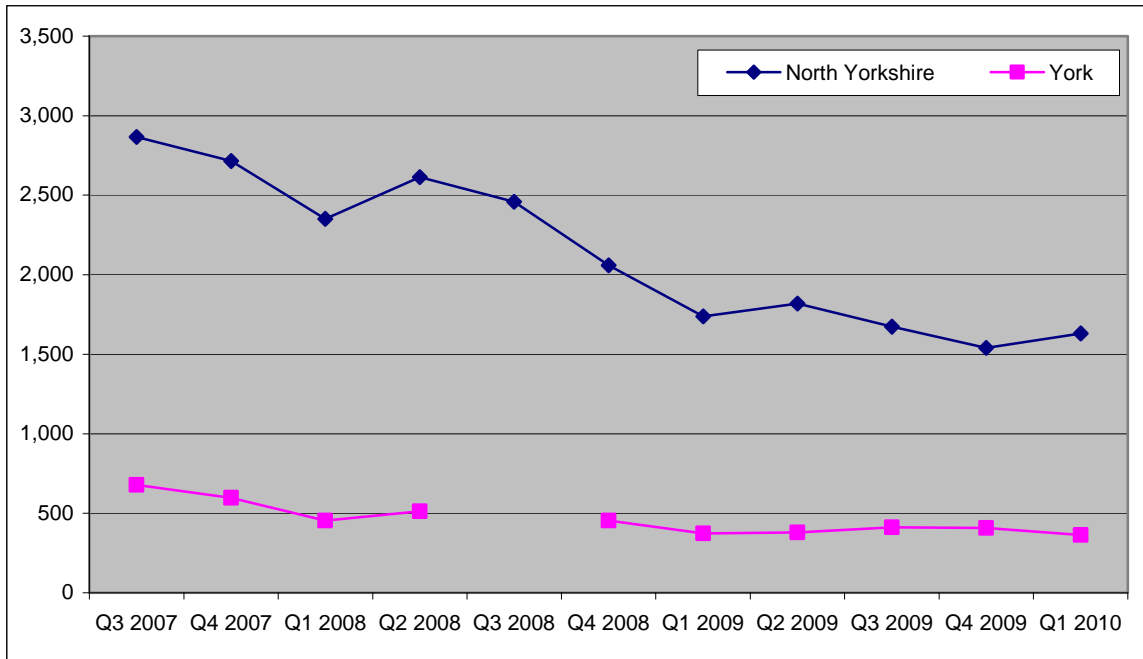
Total Planning Decisions

	Quarter 1 2010*	Change on previous quarter		Change on previous year	
England	95,700	-9,620	-9.1	2,600	2.8
Yorkshire and Humber	7,531	-922	-10.9	-269	-3.4
York and North Yorkshire	1,994	46	2.4	-117	-5.5
North Yorkshire	1,631	90	5.8	-106	-6.1
York	363	-44	-10.8	-11	-2.9
Craven	118	-16	-11.9	-3	-2.5
Hambleton	238	-33	-12.2	-40	-14.4
Harrogate	473	21	4.6	12	2.6
Richmondshire	104	-40	-27.8	-34	-24.6
Ryedale	141	-27	-16.1	-14	-9.0
Scarborough	164	-42	-20.4	-1	-0.6
Selby	155	-11	-6.6	-13	-7.7
North York Moors	124	-43	-25.7	-19	-13.3
Yorkshire Dales	114	-	-	6	5.6

Source: Statistics of Planning Decisions, CLG

- Data cannot be calculated

Total Planning Decisions, North Yorkshire/York



Source: Statistics of Planning Decisions, CLG

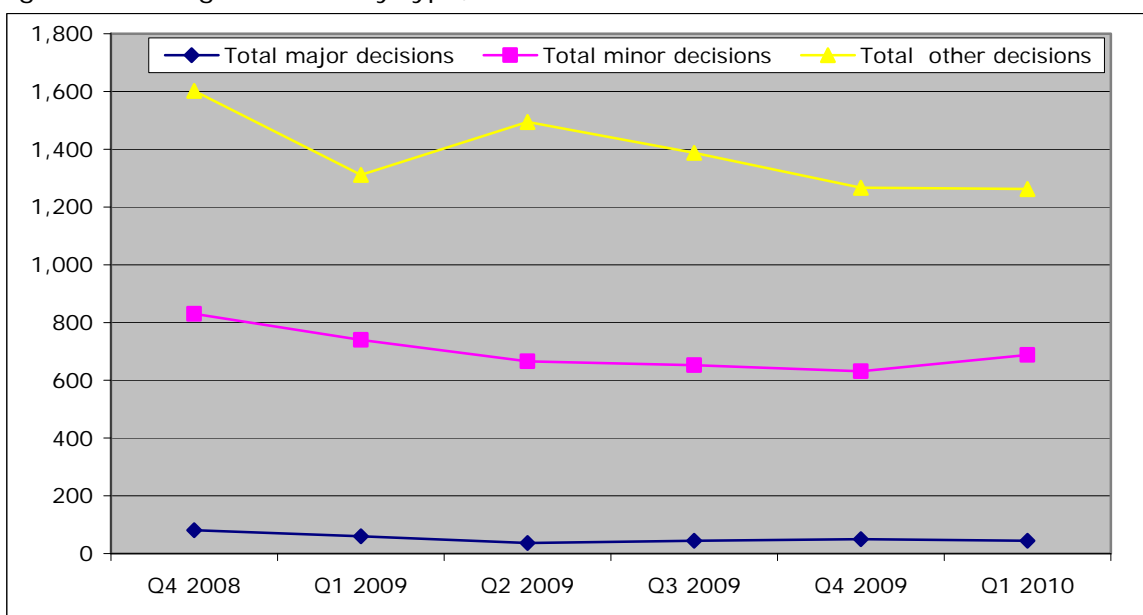
N.B. The number of decisions made in Q3 2008 is not available and therefore excluded from the chart. The figure for North Yorkshire for Q2 2009 does not include data for Craven

Breakdown of planning decisions by type in York and North Yorkshire

	Q1 2010	Change on previous quarter		Change on previous year	
Total major decisions	44	-6	-12.0%	-16	-26.7%
Total minor decisions	688	57	9.0%	-52	-7.0%
Total other decisions	1,262	-5	-0.4%	-49	-3.7%
Total	1,994	46	2.4%	-117	-5.5%

Source: Statistics of Planning Decisions, CLG

Figure: Planning Decisions by type, York and North Yorkshire



Source: Statistics of Planning Decisions, CLG

N.B. Figures shown for Q2 2009 does not include data for Craven

Community and Voluntary Sector

Demand for CAB services

2009/10 Q3	Craven	Hambleton	Richmondshire	Ripon	Ryedale	Scarborough	Selby
Benefits	607	903	805	446	703	984	1,247
Debt	414	1598	1,016	113	826	1,732	1,432
Employment	224	291	252	111	129	286	1,128
Health & Community	38	34	26	25	16	43	29
Relationships & family	84	146	156	49	53	145	169
Total	1,367	2,972	2,255	744	1,727	3,190	4,005

Source: York and North Yorkshire Infrastructure Consortium.

N.B it is hoped CAB figures for York and Harrogate will be included next quarter. A new sub-regional figure is included in the main report.