

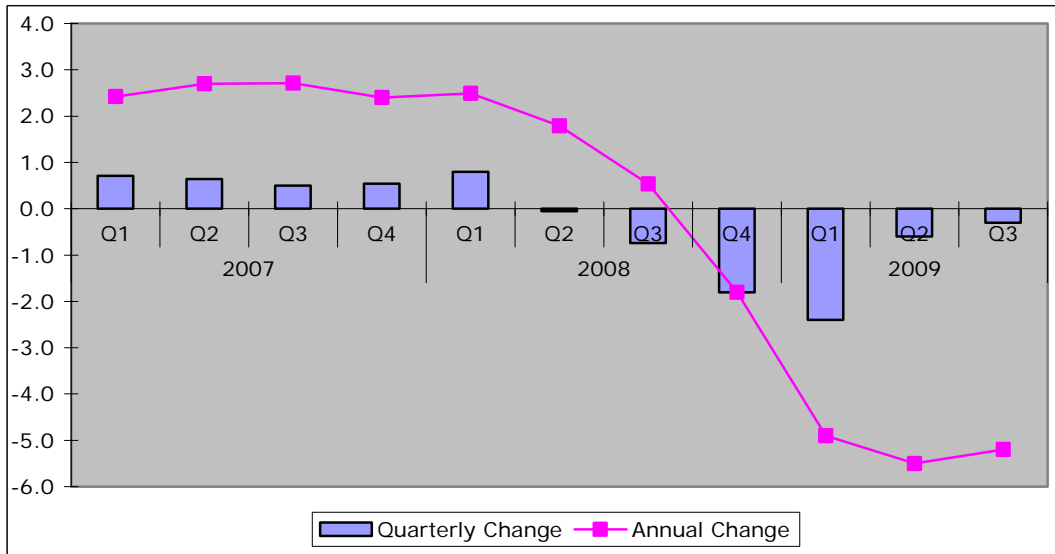
National Picture

Key Indicators	October 2009	November 2009	Change
Inflation figures - CPI	1.5	1.9	0.4
Inflation figures - RPI	-0.8	-0.3	0.5
New Businesses - VAT Registrations	13,922	16,002	2,080
			14.9%
VAT De-registrations	14,320	13,701	-619
			-4.3%

Source: ONS, UK Trade Info

- ◆ GDP contracted by 0.2% in Q3 of 2009.

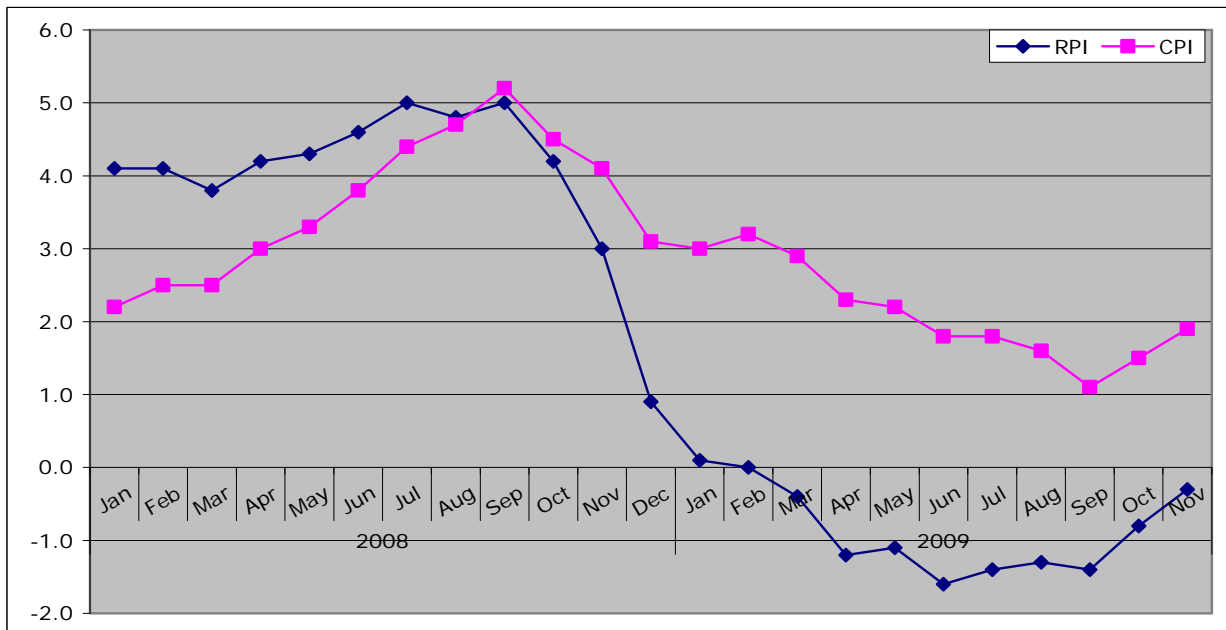
Figure: Change to GDP



Source: ONS

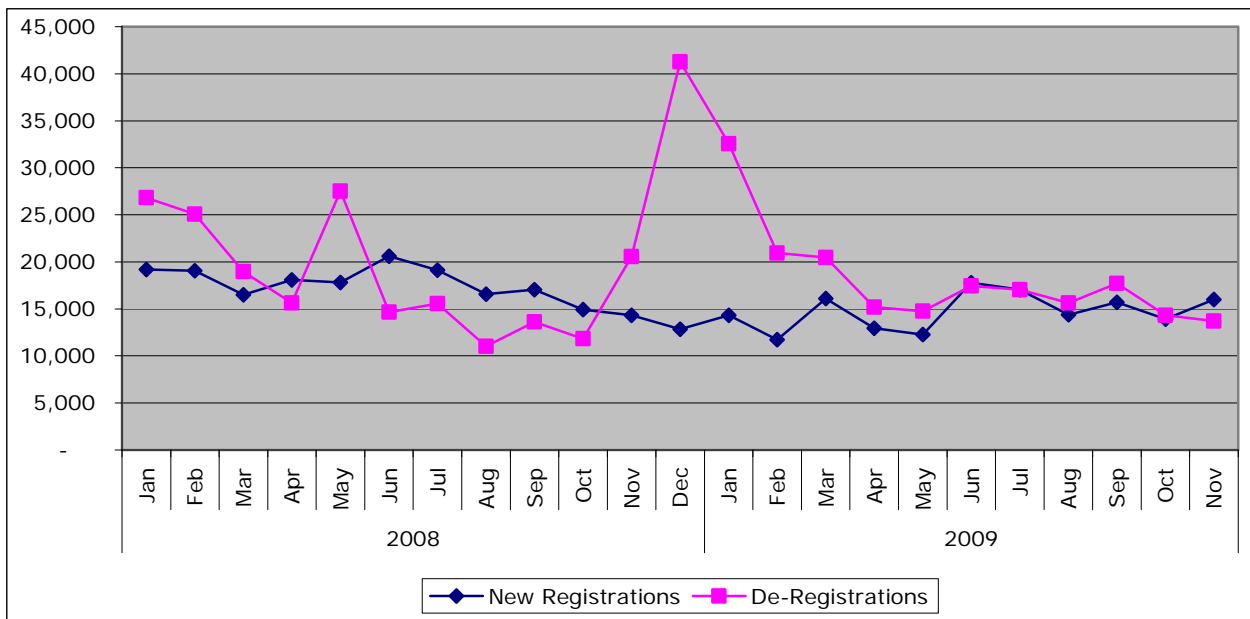
* Data is provisional

Figure: Inflation Trends



Source: ONS

Figure 1: New Business Registrations and De-Registrations



Source: UK Trade Info

Local Picture

Employment

Job Gains/Losses

Confirmed Job losses - November 2009

Company	Location	No. jobs	Type of Service
First Quench Retailing	Scarborough	-4	Distribution and Retail
Severfield-Rowen	Dalton, Thirsk	-95	Manufacturing
Severfield-Rowen	Sherburn, Scarborough	-60	Manufacturing
Threshers	York	-5	Distribution and Retail
Total		-164	

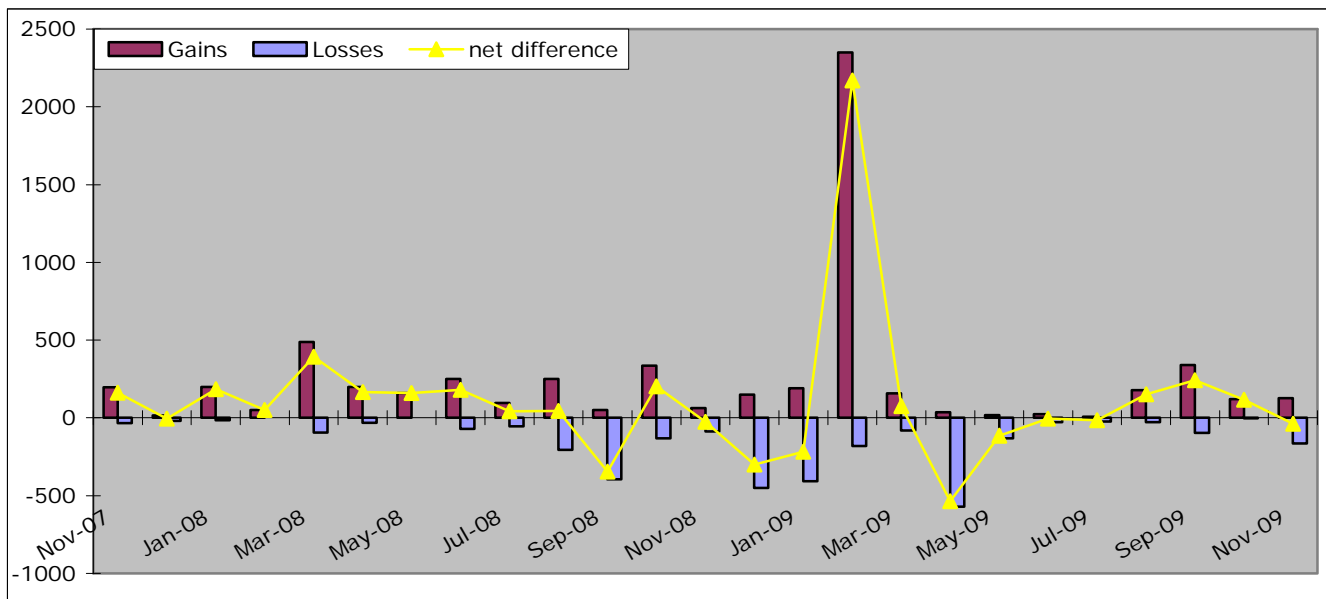
Source: Yorkshire Futures Monthly jobs database

Confirmed Job Gains - November 2009

Company	Location	No. Jobs	Type of Service
Stowe Family Law	Harrogate	3	Business Services
Job Match Scheme	Scarborough	33	Various Services
Birse Civils Ltd	York	90	Construction
Total		126	

Source: Yorkshire Futures Monthly jobs database

Figure: Jobs/Gains and net difference



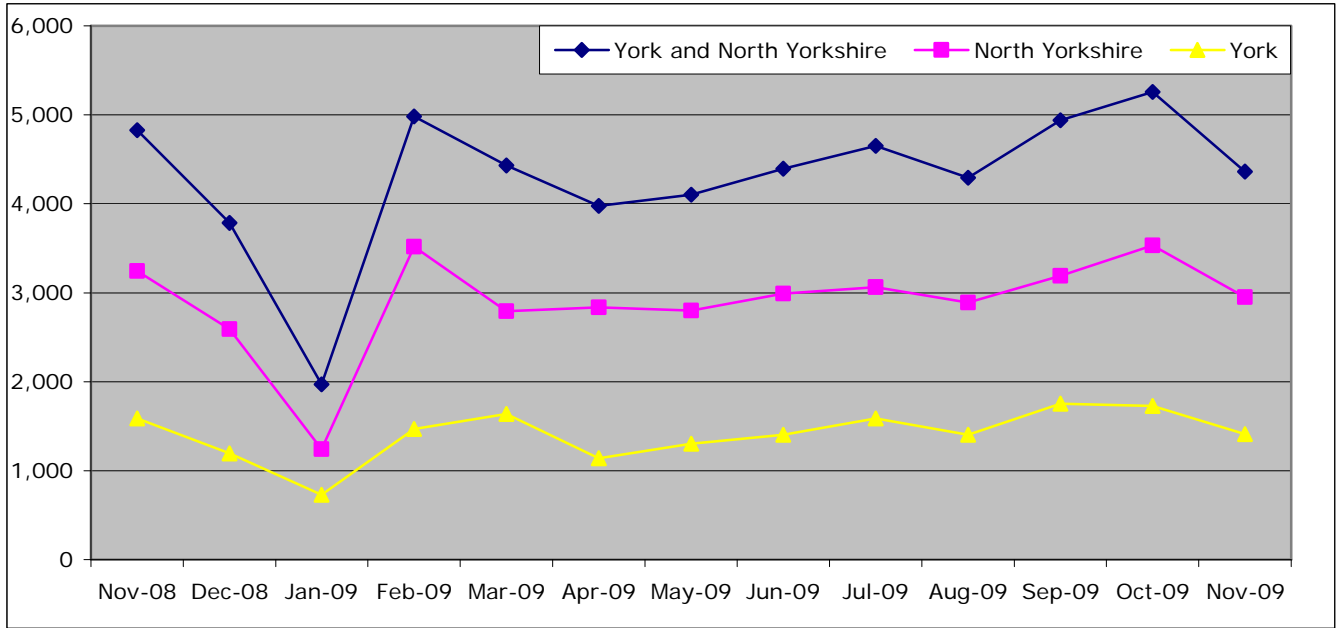
Source: Yorkshire Forward jobs database

Job Centre Plus – notified job vacancies

	November 2009	Monthly Change		Annual Change	
England	279,806	-47,029	-14.4%	-3,516	-1.2%
Yorkshire and Humber	29,340	-2,043	-6.5%	-690	-2.3%
York and North Yorkshire	4,363	-894	-17.0%	-466	-9.7%
North Yorkshire	2,951	-580	-16.4%	-291	-9.0%
York	1,412	-315	-18.2%	-175	-11.0%
Craven	307	20	7.0%	20	7.0%
Hambleton	451	-122	-21.3%	-38	-7.8%
Harrogate	822	-163	-16.5%	-300	-26.7%
Richmondshire	214	25	13.2%	45	26.6%
Ryedale	106	-127	-54.5%	-57	-35.0%
Scarborough	583	-81	-12.2%	65	12.5%
Selby	468	-132	-22.0%	-26	-5.3%

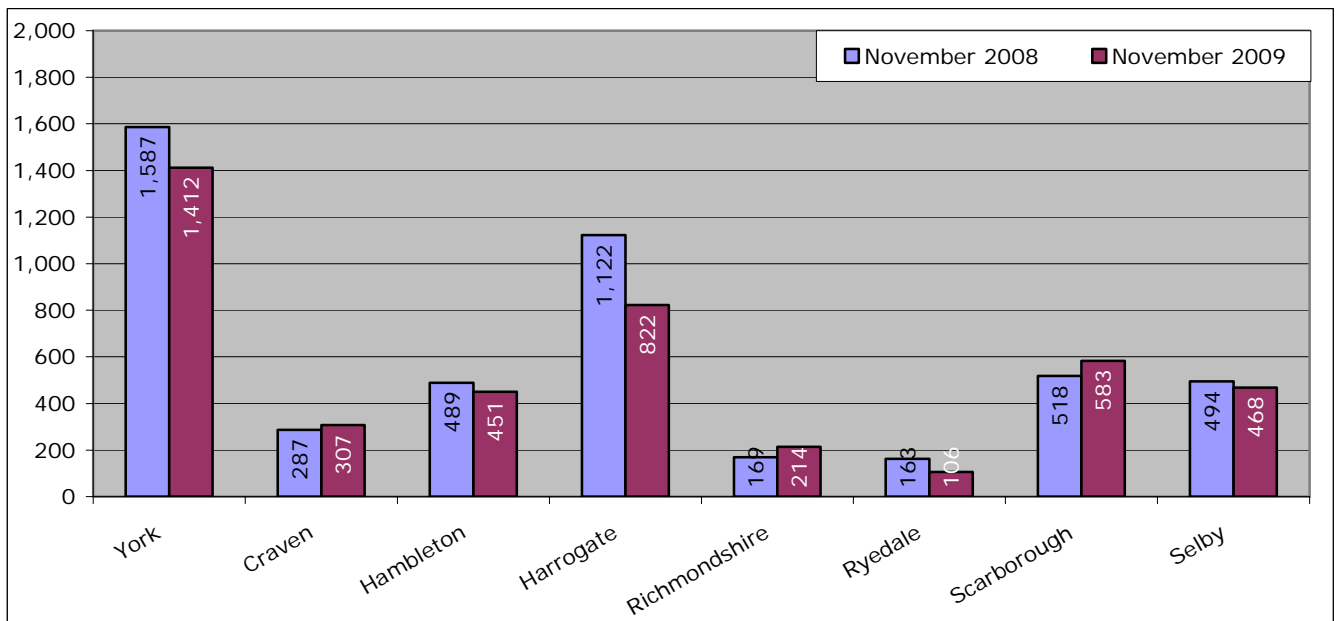
Source: Nomis

Figure: Number of vacancies trend



Source: Nomis

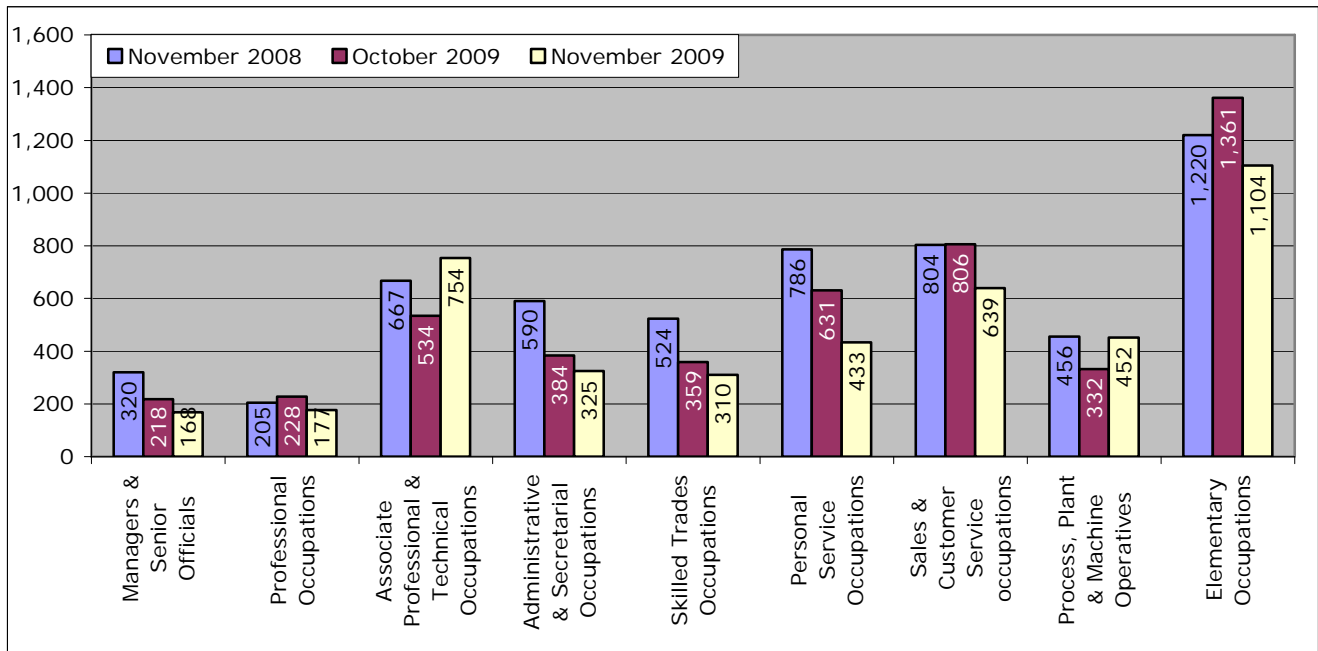
Figure: Number of Vacancies, Year on Year comparison



Source: Nomis

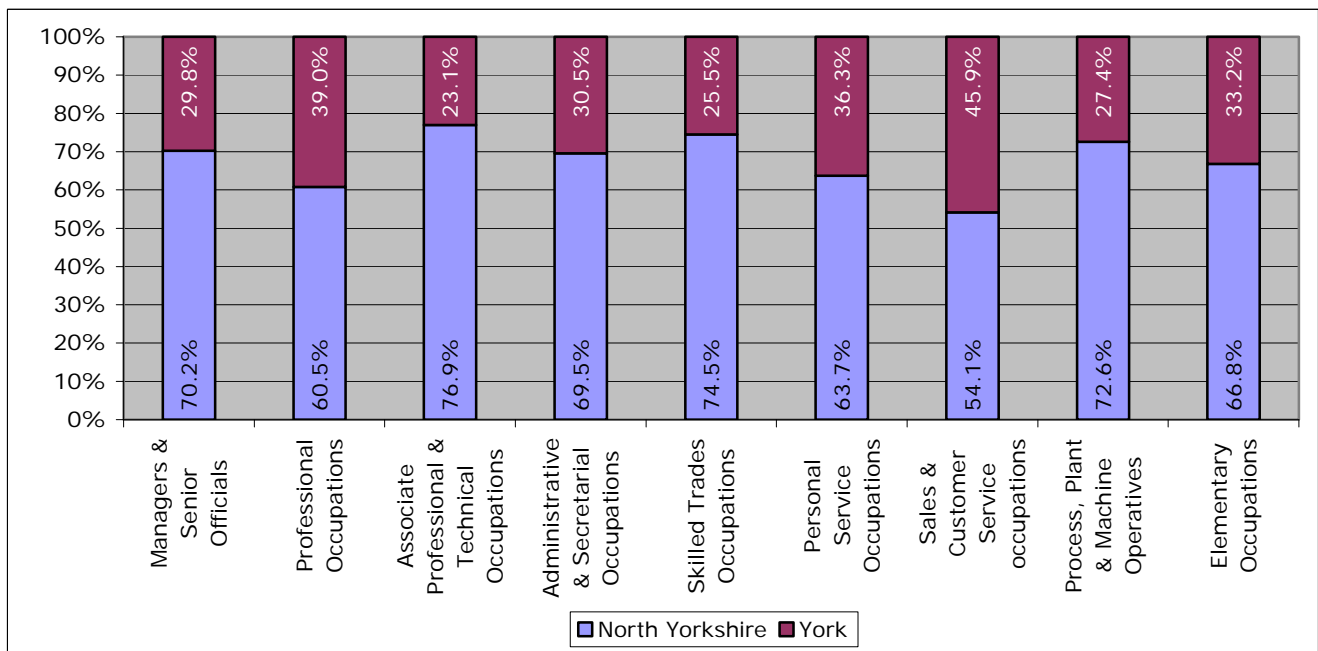
Vacancies by Occupation

Figure: Share of vacancies by occupation, York and North Yorkshire, year on year comparison



Source: Nomis

Figure: Distribution of vacancies by occupation between North Yorkshire & York, November 2009



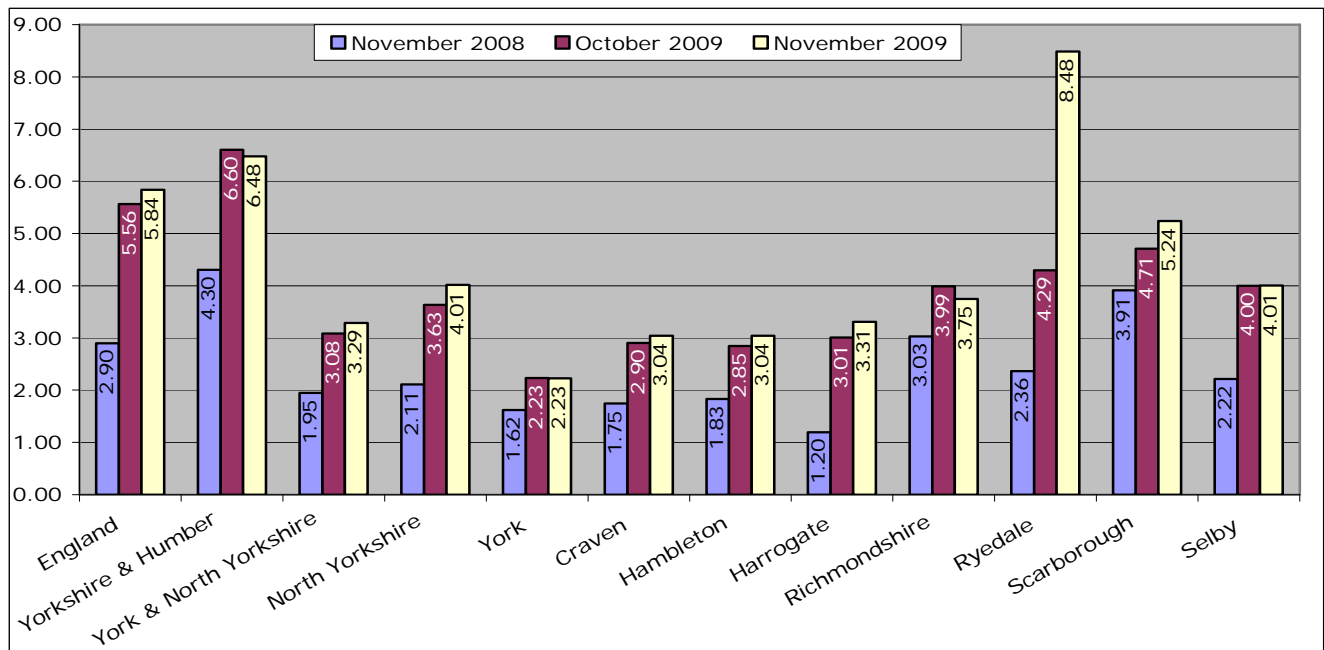
Source: Nomis

Number of Claimants to Notified Vacancies ratio

	November 2008	October 2009	November 2009	Annual Change	Monthly Change
England	2.90	5.56	5.84	2.94	0.27
Yorkshire and Humber	4.30	6.60	6.48	2.17	-0.13
York and North Yorkshire	1.95	3.08	3.29	1.34	0.20
North Yorkshire	2.11	3.63	4.01	1.90	0.38
York	1.62	2.23	2.23	0.60	-0.01
Craven	1.75	2.90	3.04	1.30	0.14
Hambleton	1.83	2.85	3.04	1.21	0.20
Harrogate	1.20	3.01	3.31	2.11	0.30
Richmondshire	3.03	3.99	3.75	0.72	-0.24
Ryedale	2.36	4.29	8.48	6.12	4.19
Scarborough	3.91	4.71	5.24	1.33	0.53
Selby	2.22	4.00	4.01	1.79	0.01

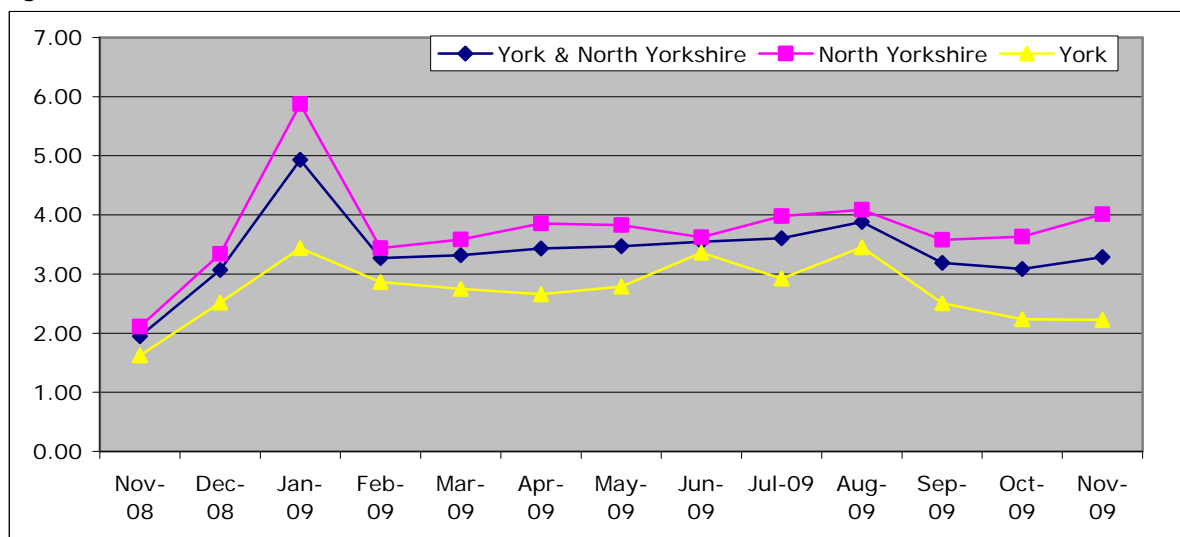
Source: Nomis

Figure: Number of Claimants to Notified Vacancies, Year on Year comparison



Source: Nomis

Figure: Number of Claimants to Notified Vacancies ratio trend



Source: Nomis

Unemployment

Total Claimant Count

	November 2009	Annual Change	Annual % Change	Monthly Change	Monthly % Change
England	1,307,139	429,092	48.9	-14,938	-1.1
Yorkshire and Humber	154,277	50,435	48.6	-623	-0.4
York and North Yorkshire	14,026	5,166	58.3	556	4.1
North Yorkshire	10,170	3,740	58.2	520	5.4
York	3,856	1,426	58.7	36	0.9
Craven	697	269	62.9	26	3.9
Hambleton	1,160	446	62.5	10	0.9
Harrogate	2,190	910	71.1	10	0.5
Richmondshire	645	178	38.1	67	11.6
Ryedale	755	266	54.4	85	12.7
Scarborough	3,028	1,005	49.7	311	11.4
Selby	1,695	666	64.7	11	0.7

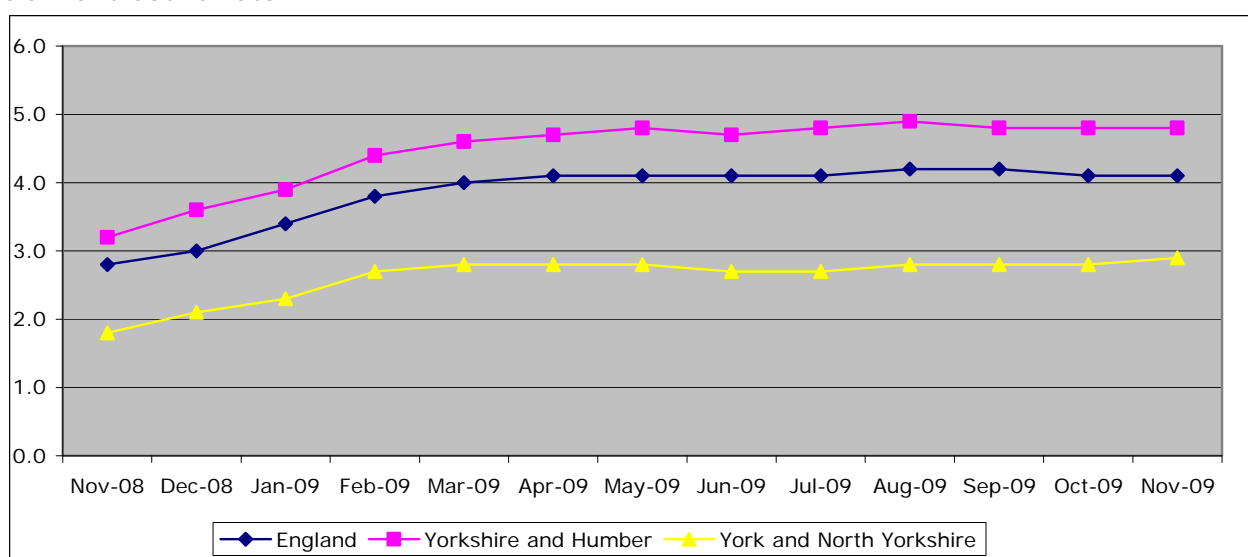
Source: Nomis

Claimant Count Rate

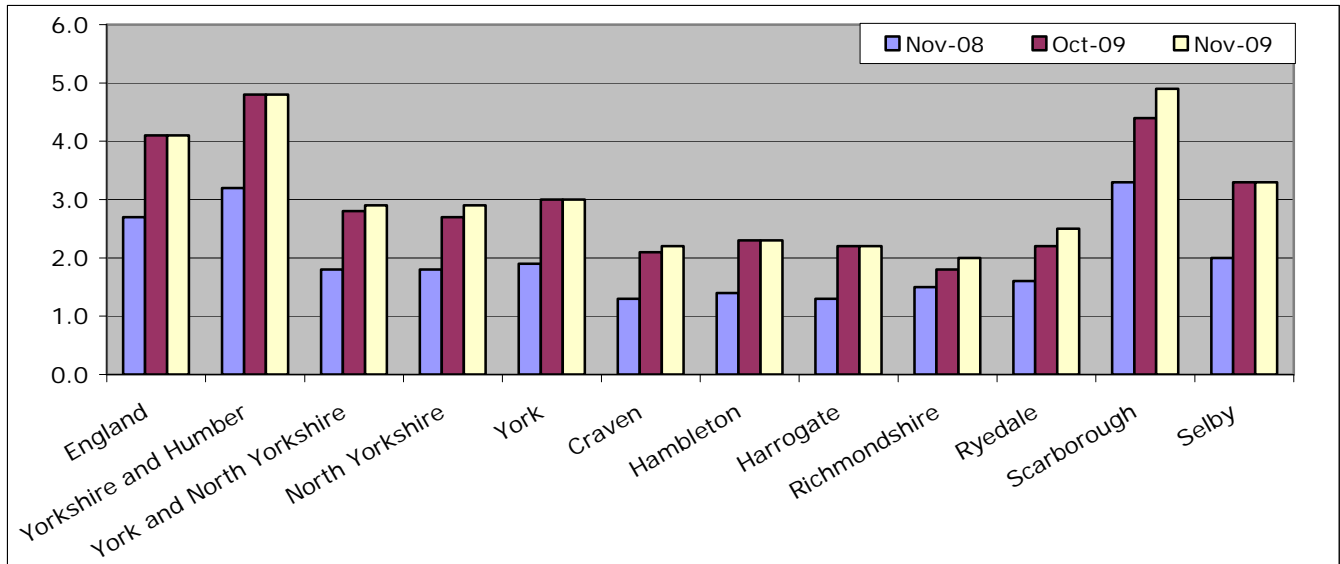
	England	Yorkshire and Humber	York and North Yorkshire
November 2008	2.8	3.2	1.8
December 2008	3.0	3.6	2.1
January 2009	3.4	3.9	2.3
February 2009	3.8	4.4	2.7
March 2009	4.0	4.6	2.8
April 2009	4.1	4.7	2.8
May 2009	4.1	4.8	2.8
June 2009	4.1	4.7	2.7
July 2009	4.1	4.8	2.7
August 2009	4.2	4.9	2.8
September 2009	4.2	4.8	2.8
October 2009	4.1	4.8	2.8
November 2009	4.1	4.8	2.9

Source: Nomis

Claimant Count Rate



Source: Nomis



Source: Nomis

Total Claiming for Over 12 months

	Nov-09	Annual Change	Annual % Change	Monthly Change	Monthly % Change
England	166,035	81,380	96.1	14,415	9.5
Yorkshire and Humber	19,490	10,990	129.3	1,880	10.7
York and North Yorkshire	1,460	880	151.7	180	14.1
North Yorkshire	1,070	675	170.9	140	15.1
York	395	210	113.5	45	12.9
Craven	50	30	150.0	0	0.0
Hambleton	110	55	100.0	5	4.8
Harrogate	210	130	162.5	15	7.7
Richmondshire	55	35	175.0	10	22.2
Ryedale	110	70	175.0	25	29.4
Scarborough	330	200	153.8	45	15.8
Selby	200	155	344.4	45	29.0

Source: Nomis

Total claiming for over 6 months

	November 2009	Annual Change	Annual % Change	Monthly Change	Monthly % Change
England	446,330	238,910	115.2	-215	0.0
Yorkshire and Humber	52,665	29,210	124.5	205	0.4
York and North Yorkshire	4,055	2,460	154.2	100	2.5
North Yorkshire	2,930	1,790	157.0	50	1.7
York	1,125	675	150.0	50	4.7
Craven	185	115	164.3	5	2.8
Hambleton	320	180	128.6	-10	-3.0
Harrogate	630	385	157.1	15	2.4
Richmondshire	155	100	181.8	-10	-6.1
Ryedale	225	125	125.0	-10	-4.3
Scarborough	845	460	119.5	35	4.3
Selby	565	415	276.7	15	2.7

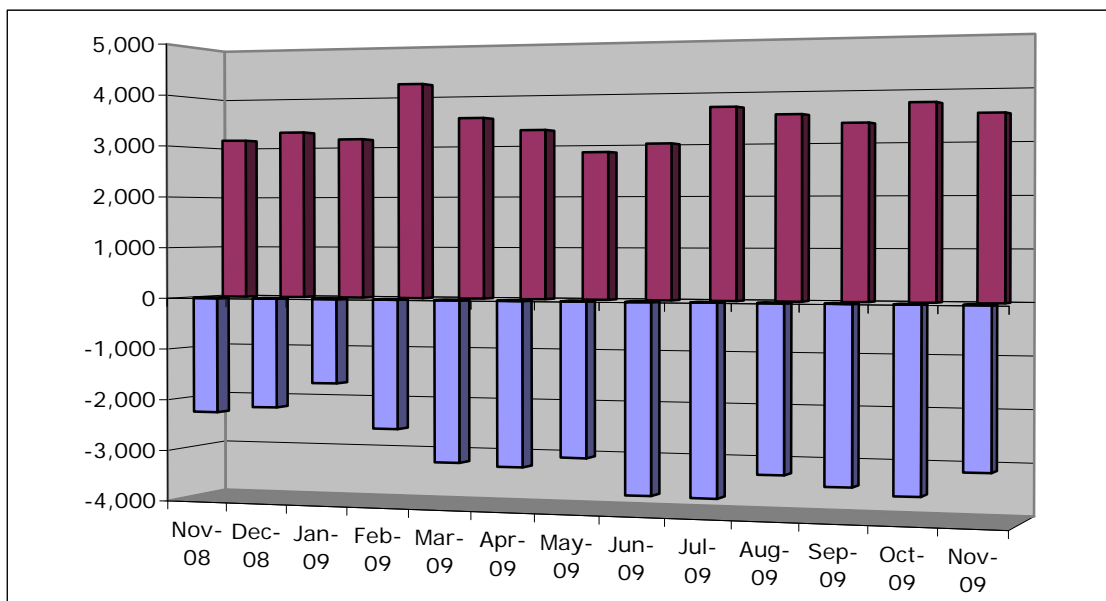
Source: Nomis

Claimant Count On-Flow and Off-Flow in York and North Yorkshire

	Off-flow	On-flow	Difference
November 2008	-2,253	3,143	890
December 2008	-2,132	3,292	1,160
January 2009	-1,636	3,146	1,510
February 2009	-2,499	4,220	1,721
March 2009	-3,115	3,535	420
April 2009	-3,167	3,288	121
May 2009	-2,956	2,850	-106
June 2009	-3,630	3,003	-627
July 2009	-3,641	3,687	46
August 2009	-3,169	3,532	363
September 2009	-3,357	3,355	-2
October 2009	-3,487	3,722	235
November 2009	-3,018	3,511	493

Source: Nomis

Claimant Count On flow and Off Flow, York and North Yorkshire



Source: Nomis

Claimant Count Off-Flow November 2009

	November 2009	Annual % Change	Monthly % Change
England	290,640	47.8	-6.1
Yorkshire and Humber	32,880	42.6	-6.9
York and North Yorkshire	3,018	34.0	-13.4
North Yorkshire	2,140	31.9	-14.4
York	878	39.4	-11.0
Craven	153	26.4	-18.2
Hambleton	290	51.8	-4.6
Harrogate	466	14.2	-25.0
Richmondshire	146	27.0	-30.1
Ryedale	142	61.4	-5.3
Scarborough	530	15.0	-0.2
Selby	413	72.8	-17.2

Source: Nomis

Claimant Count On-Flow November 2009

	November 2009	Annual % Change	Monthly % Change
England	280,231	8.1	-7.8
Yorkshire and Humber	32,744	7.4	-6.3
York and North Yorkshire	3,511	11.7	-5.7
North Yorkshire	2,580	12.1	-5.6
York	931	10.6	-6.0
Craven	174	9.4	-3.3
Hambleton	297	18.3	-10.8
Harrogate	484	6.4	-25.9
Richmondshire	210	17.3	15.4
Ryedale	212	15.2	22.5
Scarborough	784	11.4	2.0
Selby	418	13.0	-5.4

Source: Nomis

Ratio of Claimant Count Off-flow to On-flow

	Nov-08	Oct-09	Nov-09	Annual Change	Monthly Change
England	1.3	0.98	0.96	-0.35	-0.02
Yorkshire and Humber	1.3	0.99	1.00	-0.33	0.01
York and North Yorkshire	1.4	1.07	1.16	-0.23	0.09
North Yorkshire	1.4	1.09	1.21	-0.21	0.12
York	1.3	1.00	1.06	-0.28	0.06
Craven	1.3	0.96	1.14	-0.18	0.18
Hambleton	1.3	1.10	1.02	-0.29	-0.08
Harrogate	1.1	1.05	1.04	-0.08	-0.01
Richmondshire	1.6	0.87	1.44	-0.12	0.57
Ryedale	2.1	1.15	1.49	-0.60	0.34
Scarborough	1.5	1.45	1.48	-0.05	0.03
Selby	1.5	0.89	1.01	-0.54	0.12

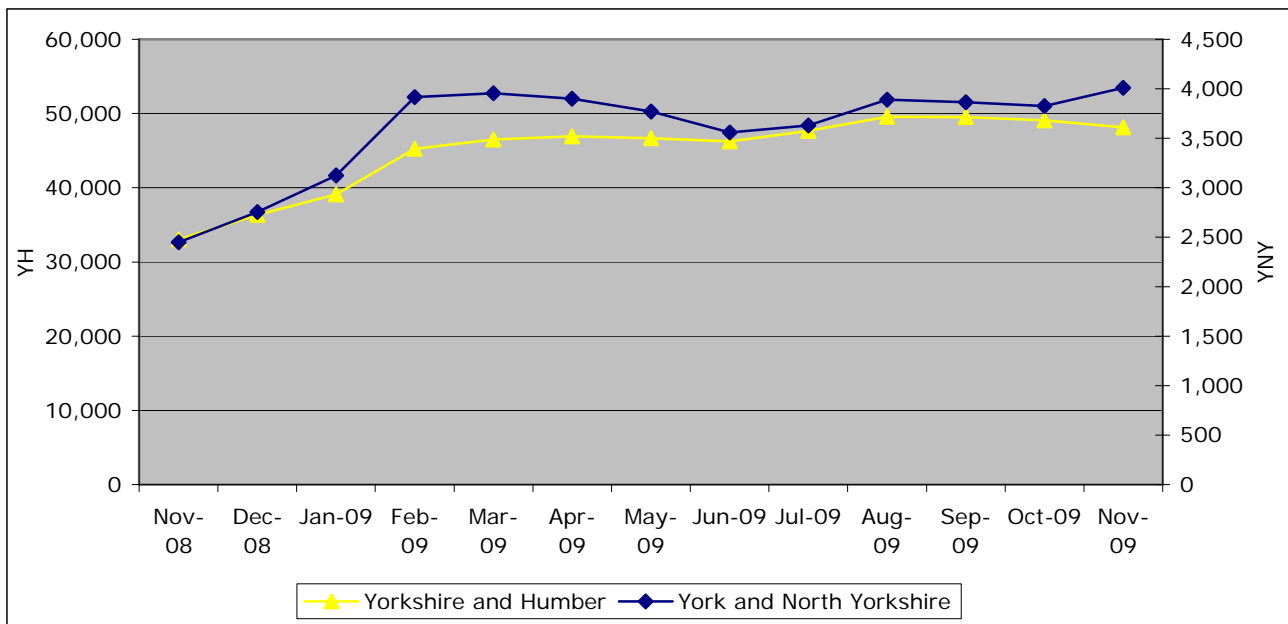
Source: Nomis

Claimant Count 18-24 year olds

	November 2009	Annual Change	Annual % Change	Monthly Change	Monthly % Change
England	385,380	119,890	45	-12,020	-3.0
Yorkshire and Humber	48,160	15,130	46	-920	-1.9
York and North Yorkshire	4,010	1,560	64	185	4.8
North Yorkshire	2,875	1,095	62	180	6.7
York	1,135	465	69	10	0.9
Craven	190	75	65	10	5.6
Hambleton	360	150	71	-15	-4.0
Harrogate	530	260	96	-15	-2.8
Richmondshire	190	35	23	20	11.8
Ryedale	205	50	32	20	10.8
Scarborough	920	335	57	155	20.3
Selby	475	190	67	-10	-2.1

Source: Nomis

Figure: 18 – 24 yr old claimants



Source: Nomis

Business Activity

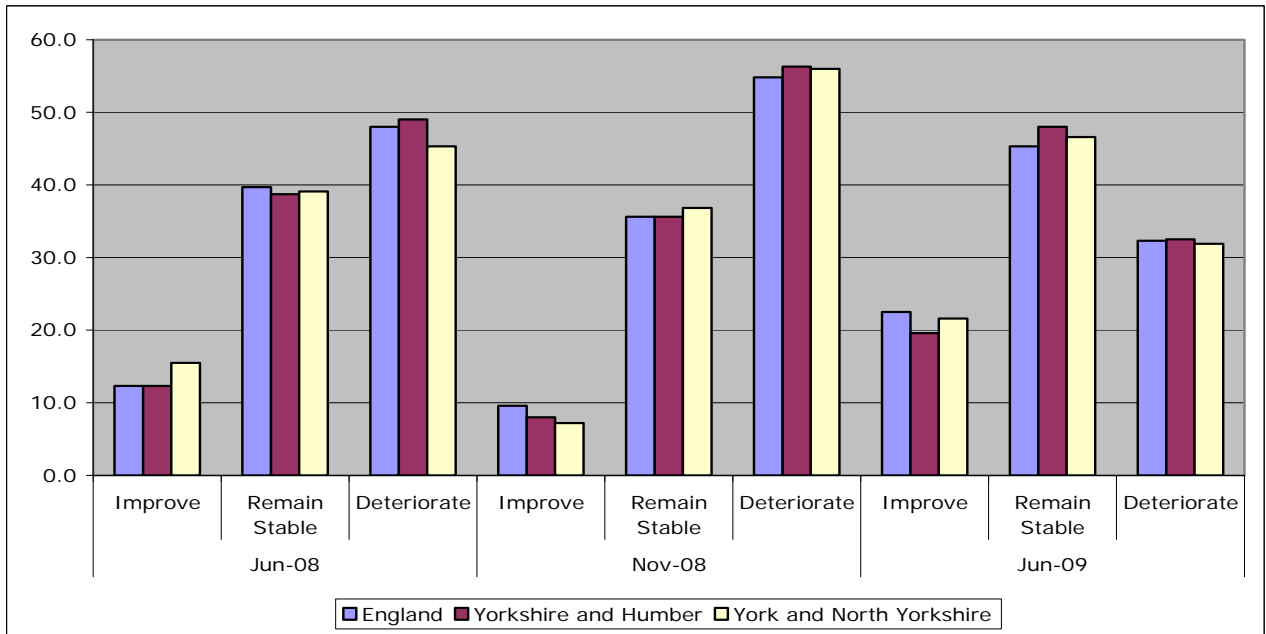
Business Confidence

The National Business Survey is a large scale research project conducted by Ipsos Mori on behalf of the RDA Network and Invest Northern Ireland. It explores perceptions of businesses across England and Northern Ireland, on current and recent business conditions as well as looking forward to potential issues and views on projected change over the coming months. The survey asks a series of questions on business confidence, a number of which are presented here.

Over the next 12 months do you expect the business climate in which your business operates to generally improve, remain stable, or deteriorate?

	Jun-08			Nov-08			Jun-09		
	Improve	Remain Stable	Deteriorate	Improve	Remain Stable	Deteriorate	Improve	Remain Stable	Deteriorate
England	12.3	39.7	48.0	9.6	35.6	54.8	22.5	45.3	32.3
Yorkshire and Humber	12.3	38.7	49.0	8.0	35.6	56.3	19.6	48.0	32.5
York and North Yorkshire	15.5	39.1	45.3	7.2	36.8	56.0	21.6	46.6	31.9

Source: 'National Business Survey, November 2008, (Ipsos Mori on behalf of England's Regional Development Agencies and Invest Northern Ireland)'

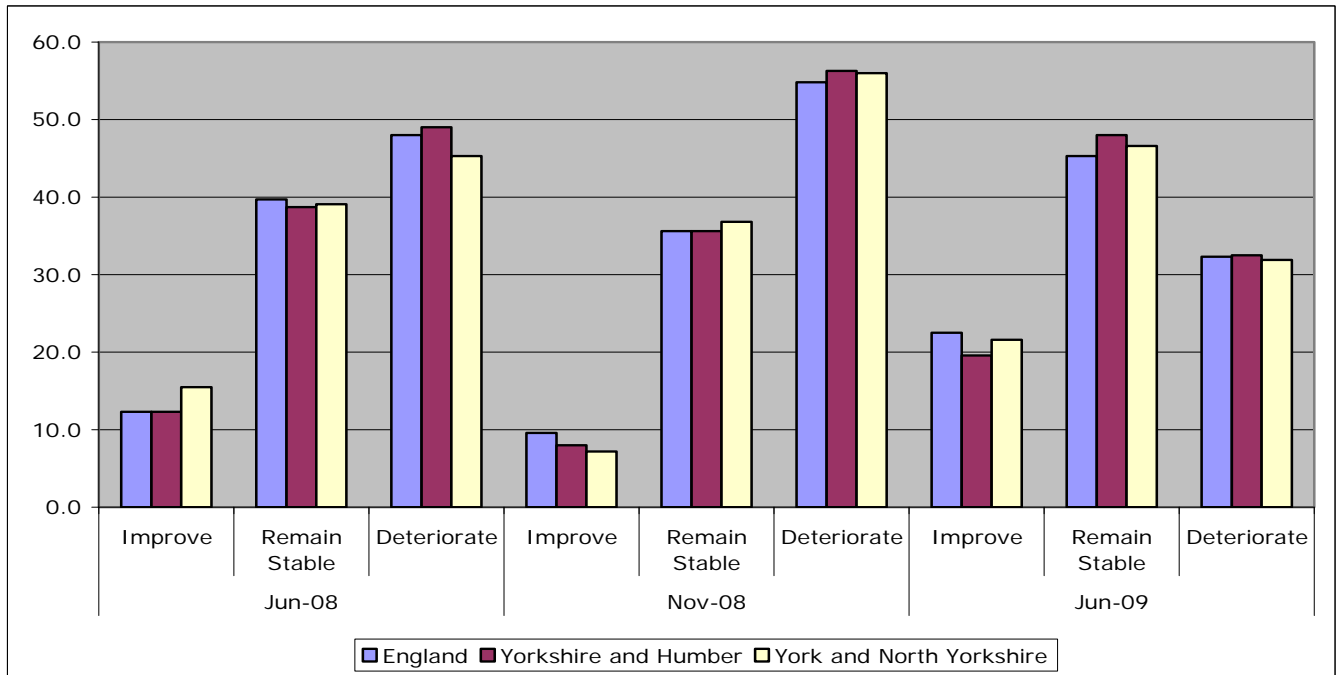


Source: 'National Business Survey, November 2008, (Ipsos Mori on behalf of England's Regional Development Agencies and Invest Northern Ireland)'

What has been the trend in the last 12 months with regard to numbers employed?

	Jun-08				Nov-08				Jun-09			
	Higher	Same	Lower	n/a	Higher	Same	Lower	n/a	Higher	Same	Lower	n/a
England	17.1	53.9	16.5	12.4	11.9	49.1	22.3	16.7	9.0	46.4	32.2	12.4
Yorkshire and Humber	15.1	54.1	18.1	12.6	13.4	46.9	24.4	15.2	7.1	44.5	29.8	18.6
York and North Yorkshire	14.3	56.0	15.6	14.2	12.8	43.9	20.0	23.3	6.3	50.9	24.3	18.5

Source: 'National Business Survey, November 2008, (Ipsos Mori on behalf of England's Regional Development Agencies and Invest Northern Ireland)'



Source: 'National Business Survey, November 2008, (Ipsos Mori on behalf of England's Regional Development Agencies and Invest Northern Ireland)'

N.B. The National Business Survey data is a sample and subject to some survey error. Sample sizes are smaller at more local levels therefore the confidence intervals are higher. Sample size can vary over the different time periods.

Tourism

Number of Visits to Leisure Attractions in York and North Yorkshire

	No of Attractions Responding	Previous Year	Total	% Change
Jul-08	54	621,521	600,900	-3%
Aug-08	56	832,091	843,934	1%
Sep-08	56	530,743	446,212	-16%
Oct-08	50	422,394	381,563	-10%
Nov-08	40	197,447	184,794	-6%
Dec-08	36	194,004	150,948	-22%
Jan-09	58	153,038	120,111	-22%
Feb-09	44	-	-	-16%
Mar-09	63	-	-	-11%
Apr-09	54	-	-	47%
May-09	54	-	-	11.1%
Jun-09	56	-	-	3.7%
Jul-09	57	-	-	7.2%

Source: Visitor Attraction Monitor, Yorkshire Tourist Board

Housing

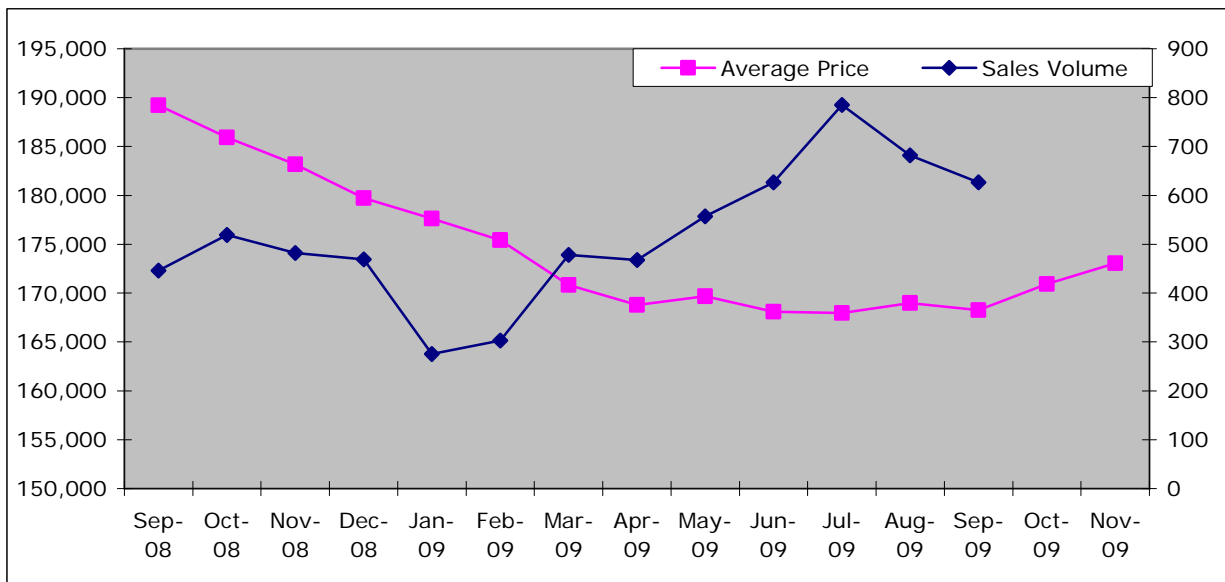
Land Registry House Price Index

North Yorkshire

	Index	Average Price	Monthly Change	Annual Change	Sales Volume
Sep-08	278.6	189,228	-1.8	-4.7	446
Oct-08	273.8	185,948	-1.7	-6.6	519
Nov-08	269.7	183,175	-1.5	-8.1	482
Dec-08	264.6	179,737	-1.9	-10.3	469
Jan-09	261.5	177,628	-1.2	-11.4	275
Feb-09	258.3	175,425	-1.2	-12.1	303
Mar-09	251.5	170,828	-2.6	-14.5	478
Apr-09	248.5	168,803	-1.2	-14.0	468
May-09	249.9	169,671	0.5	-13.5	557
Jun-09	247.5	168,104	-0.9	-13.5	627
Jul-09	247.3	167,978	-0.1	-13.1	785
Aug-09	248.8	168,979	0.6	-12.3	682
Sep-09	247.7	168,248	-0.4	-11.1	627
Oct-09	251.7	170,929	1.6	-8.1	-
Nov-09	254.8	173,049	1.2	-5.5	-

Source: Land Registry, House Price Index
 - Data not available

Figure: North Yorkshire – Average Price & Sales Volume



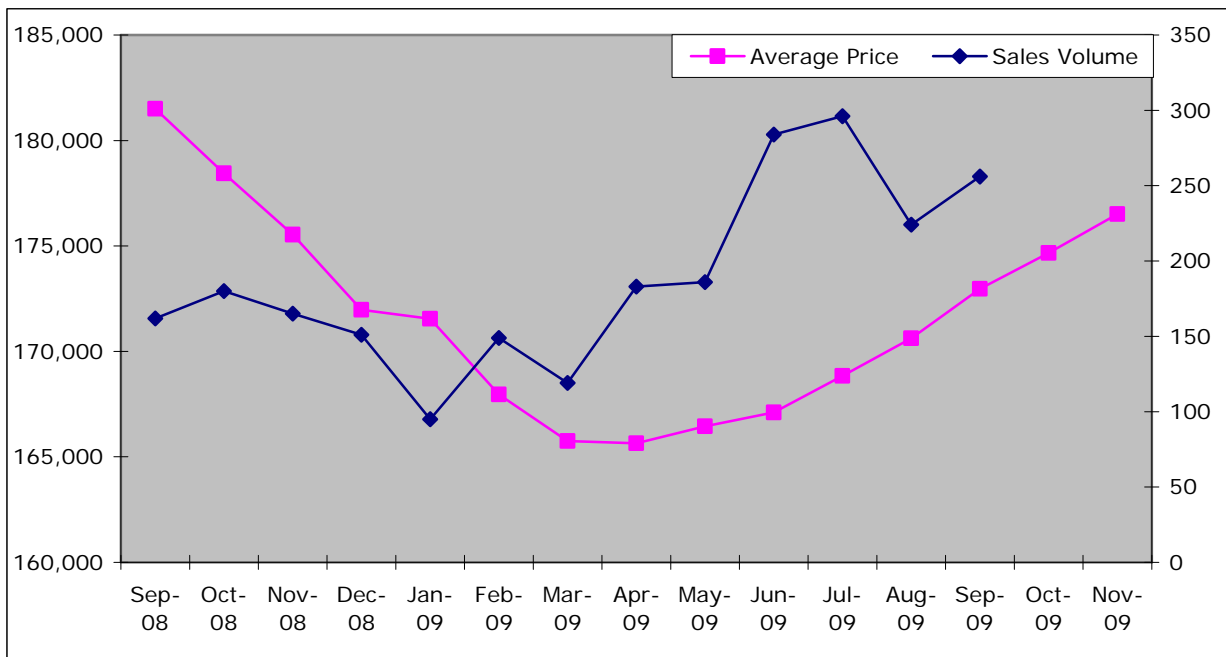
Source: Land Registry, House Price Index

York – Average Price & Sales Volume

	Index	Average Price	Monthly Change	Annual Change	Sales Volume
Sep-08	278.6	181,500	-3.6	-6.8	162
Oct-08	273.9	178,443	-1.7	-8.4	180
Nov-08	269.5	175,533	-1.6	-9.3	165
Dec-08	264.0	171,979	-2.0	-11.1	151
Jan-09	263.4	171,554	-0.2	-11.1	95
Feb-09	257.8	167,952	-2.1	-13.4	149
Mar-09	254.5	165,751	-1.3	-13.9	119
Apr-09	254.3	165,648	-0.1	-13.8	183
May-09	255.5	166,458	0.5	-13.3	186
Jun-09	256.5	167,106	0.4	-11.8	284
Jul-09	259.2	168,839	1.0	-11.1	296
Aug-09	261.9	170,623	1.1	-9.4	224
Sep-09	265.5	172,968	1.4	-4.7	256
Oct-09	268.1	174,671	1.0	-2.1	-
Nov-09	271.0	176,516	1.1	0.6	-

Source: Land Registry, House Price Index
 - Data not available

Figure: York – Average Price & Sales Volume



Source: Land Registry, House Price Index

Mean House Prices

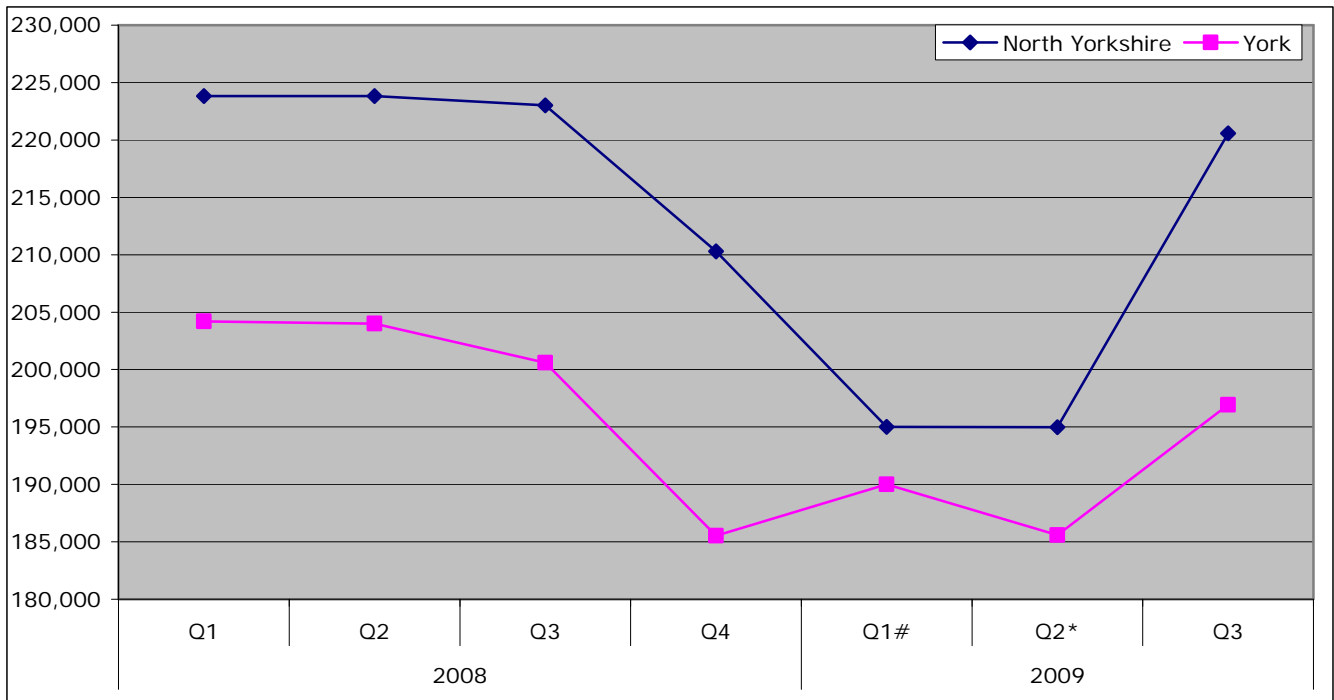
	2008				2009			% Change on previous year	% Change on previous Quarter
	Q1	Q2	Q3	Q4	Q1#	Q2*	Q3		
England	221,270	222,441	227,182	207,372	200,539	206,034	226,648	-0.2%	10.0%
Yorkshire & Humber	155,180	159,859	156,608	150,688	140,852	146,489	159,145	1.6%	8.6%
York & North Yorkshire	220,471	220,073	219,456	207,143	191,931	190,597	213,627	-2.7%	12.1%
North Yorkshire	223,812	223,835	223,002	210,287	195,019	194,982	220,595	-1.1%	13.1%
York	204,209	204,004	200,603	185,531	189,994	185,595	196,949	-1.8%	6.1%
Craven	206,501	211,979	213,589	202,136	168,367	193,672	204,456	-4.3%	5.6%
Hambleton	231,621	248,417	240,533	254,409	197,409	213,195	224,488	-6.7%	5.3%
Harrogate	280,397	286,204	269,747	244,392	239,973	238,305	272,620	1.1%	14.4%
Richmondshire	210,311	230,944	223,971	190,838	208,510	196,254	233,753	4.4%	19.1%
Ryedale	266,365	225,208	239,240	233,013	210,153	180,015	223,842	-6.4%	24.3%
Scarborough	179,150	169,107	167,178	172,640	150,757	147,100	162,299	-2.9%	10.3%
Selby	185,217	184,721	200,788	174,182	170,288	170,643	190,610	-5.1%	11.7%

Source: DCLG

Data has been revised

* Data is provisional

Figure: Mean House Prices, North Yorkshire and York



Source: DCLG

Data has been revised

* Data is provisional

Property Sales

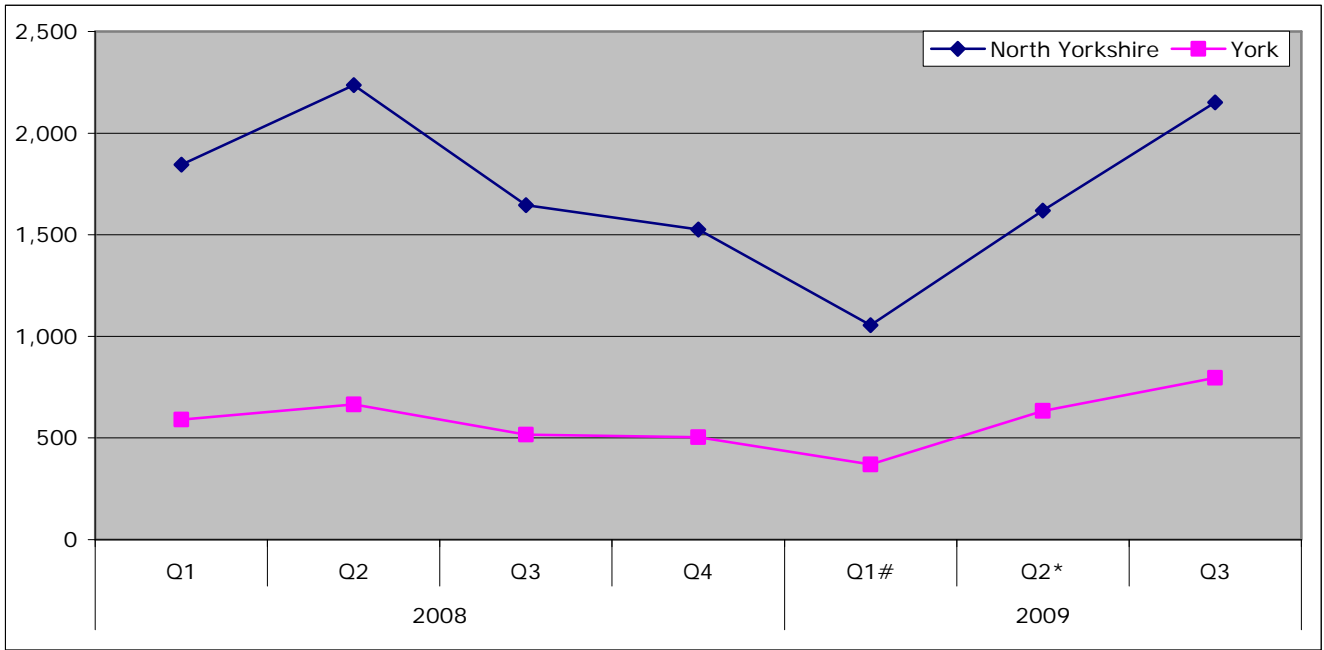
	2008				2009			% Change on previous year	% Change on previous Quarter
	Q1	Q2	Q3	Q4	Q1#	Q2*	Q3		
England	173,560	181,420	138,533	116,327	87,289	126,631	166,826	20.4%	31.7%
Yorkshire & Humber	17,276	18,717	14,017	12,059	8,537	12,004	14,522	3.6%	21.0%
York & North Yorkshire	2,436	2,902	2,162	2,030	1,424	2,253	2,947	36.3%	30.8%
North Yorkshire	1,845	2,237	1,646	1,526	1,055	1,619	2,151	30.7%	32.9%
York	591	665	516	504	369	634	796	54.3%	25.6%
Craven	173	223	161	163	92	133	224	39.1%	68.4%
Hambleton	222	292	244	202	145	231	303	24.2%	31.2%
Harrogate	489	537	443	352	316	450	605	36.6%	34.4%
Richmondshire	133	188	94	94	61	110	154	63.8%	40.0%
Ryedale	124	178	127	146	67	121	189	48.8%	56.2%
Scarborough	448	485	381	347	240	335	403	5.8%	20.3%
Selby	256	334	196	222	134	239	273	39.3%	14.2%

Source: DCLG

Data has been revised

* Data is provisional

Figure: Number of Property Sales, North Yorkshire and York



Source: DCLG

Data has been revised

* Data is provisional

Mortgage and Landlord Possession Claims/Orders

The following data indicates the number of claims/orders that have been issued at County Court level for possession of properties either under mortgage or landlord possession.

N.B. Important note - Introduction of Mortgage Pre-Action Protocol (MPAP) on 19 November 2008.

A new mortgage pre action protocol (MPAP), was introduced for possession claims in the County Courts with effect from 19 November 2008.

Evidence from administrative records from October to December 2008 suggests that this date coincided with a fall of around 50% in the daily and weekly numbers of new mortgage repossession claims being issued in the courts. It therefore seems highly likely that the launch of the MPAP has led to a marked fall in the number of new claims being issued during the latter part of the period covered by this bulletin. However, given the apparent cause, users should exercise caution in drawing broader inferences from the fall in mortgage possession claims issued in Q4 2008.

Mortgage possession orders are typically made around 8 weeks after the corresponding claims are issued. For this reason, the impact of the MPAP is expected to occur during the early months of 2009. At this early stage is not clear to what extent the launch of the MPAP has led to a permanent fall in the numbers of new mortgage possession claims being issued, as opposed to some merely being postponed. This will become clearer as statistics for 2009 are published.

Mortgage Possession Claims Issued

	Q1 2008	Q2 2008	Q3 2008	Q4 2008	Q1 2009	Q2 2009	Q3 2009	% change since Q3 2008
Yorkshire & Humber	4,038	3,928	3,962	2,669	2,476	2,760	2,820	-28.8%
York & North Yorkshire	360	337	358	258	237	245	230	-35.8%
Harrogate	59	56	44	45	40	45	50	13.6%
Scarborough	120	97	138	93	78	80	65	-52.9%
Skipton	33	41	29	20	24	25	25	-13.8%
York	148	143	147	100	95	95	90	-38.8%

Source: Ministry of Justice

Mortgage Possession Orders Issued

	Q1 2008	Q2 2008	Q3 2008	Q4 2008	Q1 2009	Q2 2009	Q3 2009	% change since Q3 2008
Yorkshire & Humber	-	-	-	-	1,821	1,920	2,325	-
York & North Yorkshire	-	-	-	-	152	160	195	-
Harrogate	-	-	-	-	30	25	40	-
Scarborough	90	80	116	113	57	45	65	-44.0%
Skipton	29	32	31	27	15	20	15	-51.6%
York	100	106	93	123	50	70	75	-19.4%

Source: Ministry of Justice

Landlord Possession Claims issued

	Q1 2008	Q2 2008	Q3 2008	Q4 2008	Q1 2009	Q2 2009	Q3 2009	% change since Q3 2008
Yorkshire & Humber	2,671	2,656	2,434	2,438	2,370	2,340	2,215	-9.0%
York & North Yorkshire	280	252	288	266	232	240	210	-27.1%
Harrogate	46	48	56	40	33	40	35	-37.5%
Scarborough	82	64	81	85	60	75	65	-19.8%
Skipton	15	8	16	18	12	10	10	-37.5%
York	137	132	135	123	127	115	100	-25.9%

Source: Ministry of Justice

Landlord Possession Orders issued

	Q1 2008	Q2 2008	Q3 2008	Q4 2008	Q1 2009	Q2 2009	Q3 2009	% change since Q3 2008
Yorkshire & Humber	-	-	-	-	2,403	1,660	1,815	-
York & North Yorkshire	-	-	-	-	233	-	190	-
Harrogate	-	-	-	-	44	20	35	-
Scarborough	76	52	69	75	70	30	70	1.4%
Skipton	16	5	13	12	12	*	15	15.4%
York	110	75	106	116	107	95	70	-34.0%

Source: Ministry of Justice

* The figure is not provided as the number of claims leading to an order made is either 7 or less, or if it is a % change where there are fewer than 30 observations in the base period

Planning

Total Planning Decisions

	Q1 2008	Q2 2008	Q3 2008	Q4 2008	Q1 2009	Q2 2009	Annual Change		Quarterly Change	
England	131,704	144,700	-	115,489	93,100	105,000	-39,700	-27.4%	11,900	12.8%
Yorkshire and Humber	11,534	12,100	-	9,937	7,800	8,900	-3,200	-26.4%	1,100	14.1%
York and North Yorkshire	2,806	3,125	-	2,513	2,111	2,197	-928	-29.7%	86	4.1%
North Yorkshire	2,352	2,613	2,459	2,058	1,737	1,818	-795	-30.4%	81	4.7%
York	454	512	#	455	374	379	-133	-26.0%	5	1.3%
Craven	170	193	200	117	121	#	#	#	#	#
Hambleton	323	399	360	300	278	337	-62	-15.5%	59	21.2%
Harrogate	642	672	561	613	461	427	-245	-36.5%	-34	-7.4%
Richmondshire	154	183	199	141	138	173	-10	-5.5%	35	25.4%
Ryedale	188	228	258	180	155	187	-41	-18.0%	32	20.6%
Scarborough	276	265	240	186	165	188	-77	-29.1%	23	13.9%
Selby	260	296	276	213	168	211	-85	-28.7%	43	25.6%
North York Moors	195	197	216	166	143	160	-37	-18.8%	17	11.9%
Yorkshire Dales	144	180	149	142	108	135	-45	-25.0%	27	25.0%

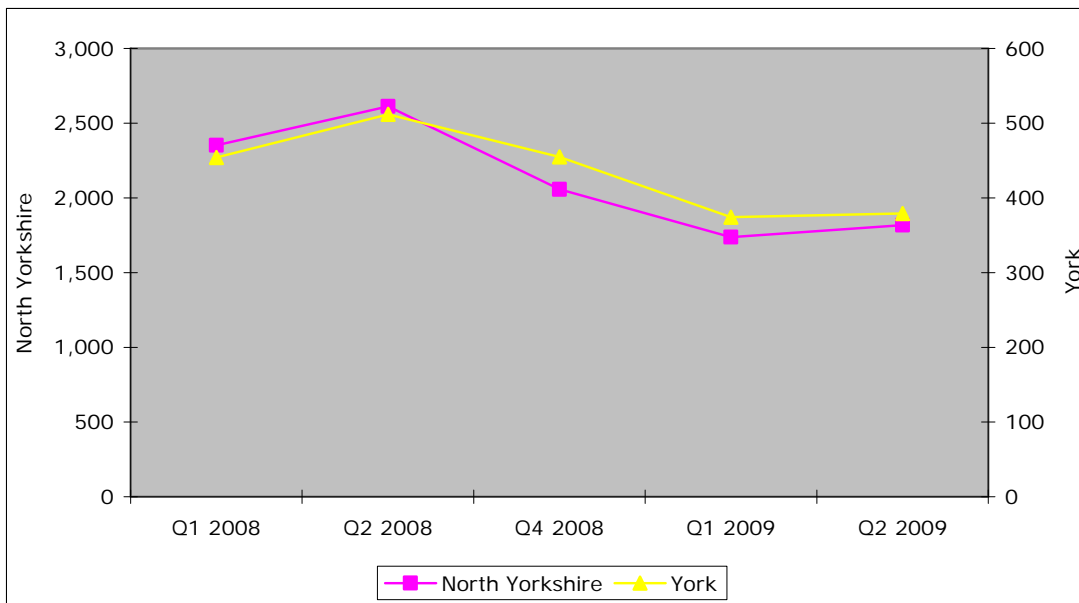
Source: Statistics of Planning Decisions, CLG

Data not submitted

- Data cannot be calculated

The figures for York and North Yorkshire and North Yorkshire for Q2 2009 does not include data for Craven

Figure: Total Planning Decisions, North Yorkshire/York



Source: Statistics of Planning Decisions, CLG

N.B. The number of decisions made in Q3 2008 is not available and therefore excluded from the chart. The figure for North Yorkshire for Q2 2009 does not include data for Craven

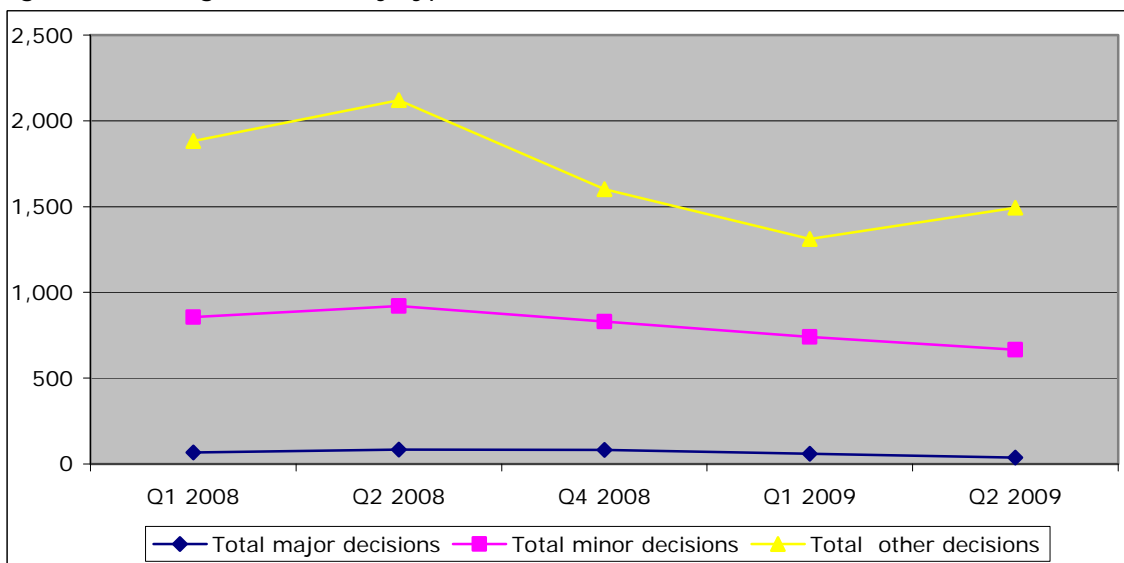
Breakdown of planning decisions by type in York and North Yorkshire

	Q1 2008	Q2 2008	Q3 2008	Q4 2008	Q1 2009	Q2 2009
Total major decisions	67	83	-	81	60	37
Total minor decisions	856	921	-	830	740	666
Total other decisions	1,883	2,121	-	1,602	1,311	1,494
Total	2,806	3,125	-	2,513	2,111	2,197

Source: Statistics of Planning Decisions, CLG

N.B Figures shown for Q2 2009 does not include data for Craven

Figure: Planning Decisions by type, York and North Yorkshire



Source: Statistics of Planning Decisions, CLG

N.B. The total number of decisions made in Q3 2008 is unknown and therefore excluded from the chart. N.B Figures shown for Q2 2009 does not include data for Craven

Breakdown of planning decisions by type, North Yorkshire

	Q1 2008	Q2 2008	Q3 2008	Q4 2008	Q1 2009	Q2 2009
Total major decisions	58	66	54	69	50	33
Total minor decisions	750	799	807	700	630	575
Total other decisions	1,544	1,748	1,598	1,289	1,057	1,210
Total	2,352	2,613	2,459	2,058	1,737	1,818

Source: Statistics of Planning Decisions, CLG

N.B Figures shown for Q2 2009 does not include data for Craven

Breakdown of planning decisions by type, York

	Q1 2008	Q2 2008	Q3 2008	Q4 2008	Q1 2009	Q2 2009
Total major decisions	9	17	#	12	10	4
Total minor decisions	106	122	#	130	110	91
Total other decisions	339	373	#	313	254	284
Total	454	512	#	455	374	379

Source: Statistics of Planning Decisions, CLG

Data not submitted

Community and Voluntary Sector

Demand for CAB services

2009/10 Q1 CAB services	Craven	Hambleton	Richmondshire	Ripon	Ryedale	Scarborough	Selby
Benefits	566	828	847	575	951	898	1288
Debt	619	1142	737	179	781	1240	1985
Employment	202	308	230	147	193	325	642
Health & Community	31	28	32	21	13	28	43
Relationships & family	59	119	112	88	93	125	200
Total	1477	2425	1958	1010	2031	2616	4158

N.B it is hoped CAB figures for York and Harrogate will be included next quarter. A new sub-regional figure is included in the main report