

National Picture

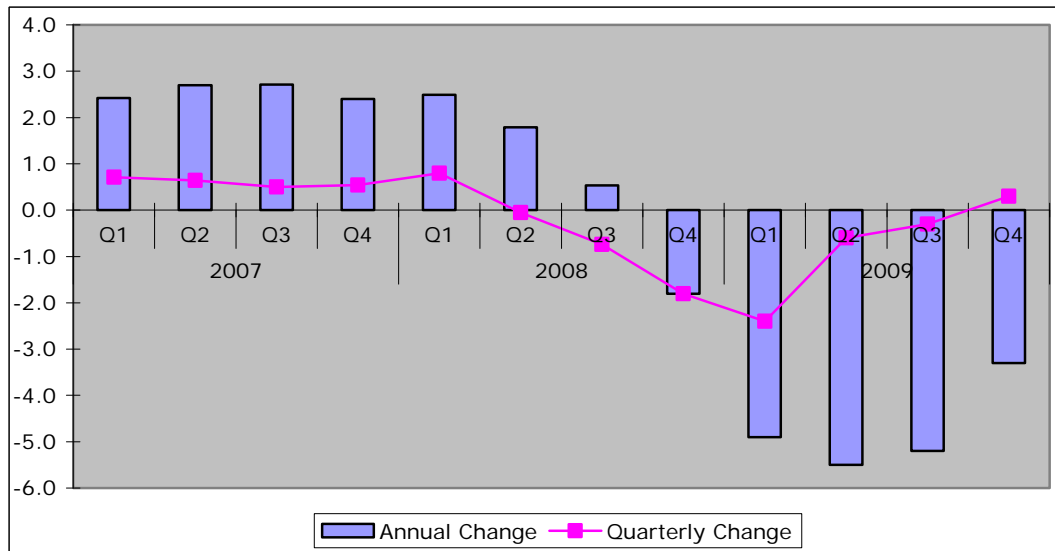
Key Indicators	December 2009	January 2010*	Change
Inflation figures - CPI	2.9	3.5	0.6
Inflation figures - RPI	2.4	3.7	1.3
New Businesses - VAT Registrations	12,539	13,542	1,003 8.0%
VAT De-registrations	20,659	16,446	-4,213 -20.4%

Source: ONS, UK Trade Info

* Provisional

- ◆ Provisional estimates suggest GDP increased by 0.3% in Q4 of 2009.

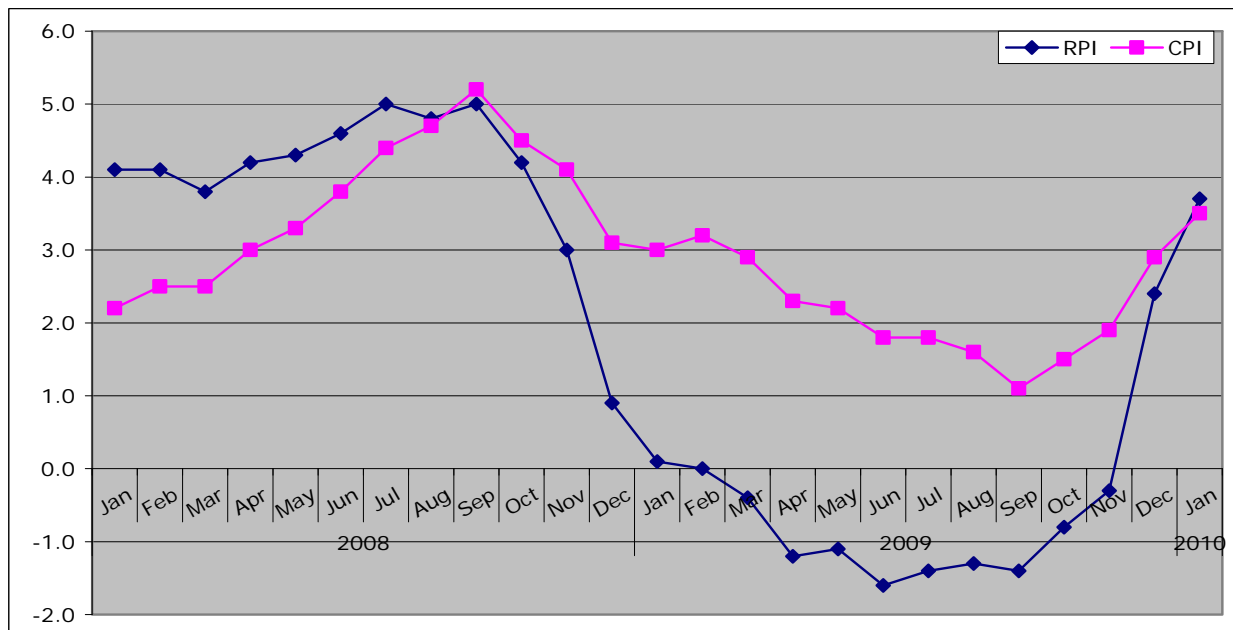
Figure: Change to GDP



Source: ONS

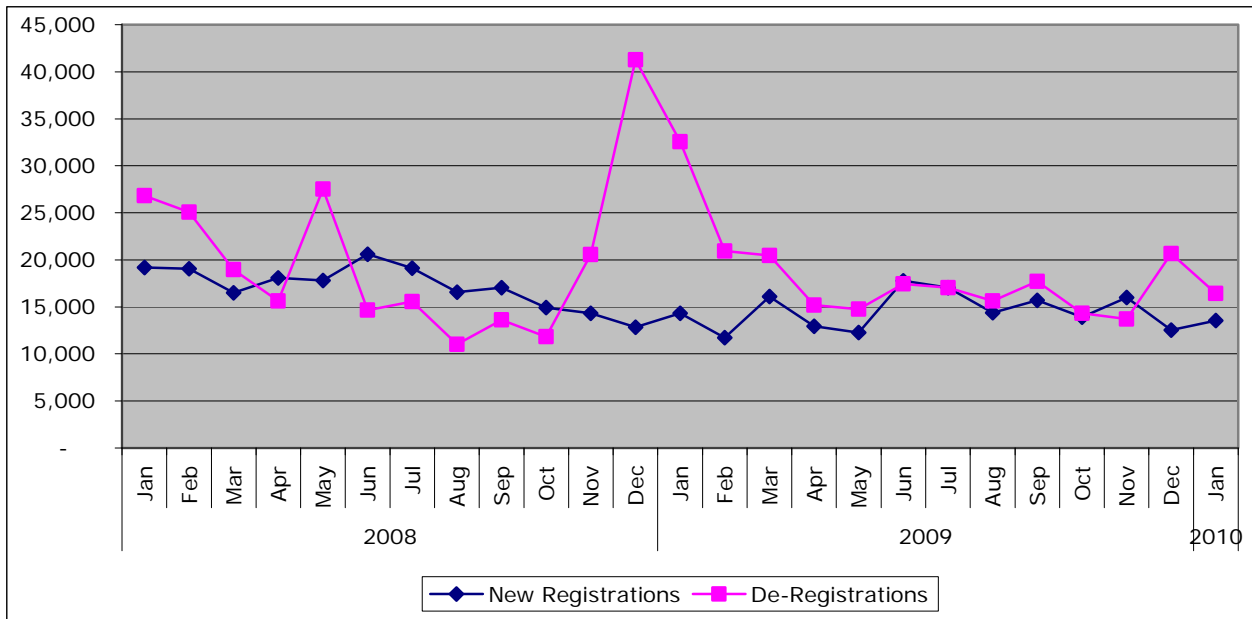
* Data is provisional

Figure: Inflation Trends



Source: ONS

Figure 1: New Business Registrations and De-Registrations



Source: UK Trade Info

Local Picture

Employment

Job Gains/Losses

Confirmed Job losses - January 2010

Company	Location	No. jobs	Type of Service
Portakabin	York	-21	Business services
Redworth Construction	Norton	-50	Construction
Aviva UK	York	-40	Financial services
Early Learning Centre	Scarborough	-6	Distribution and retail
Total		-117	

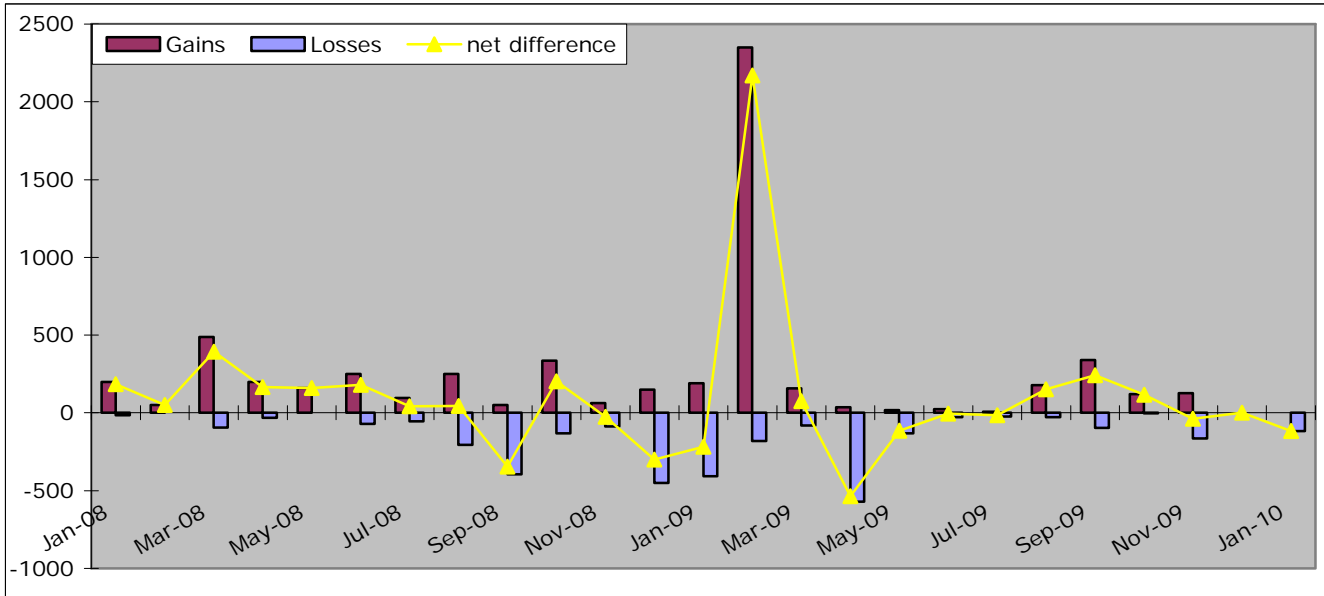
Source: Yorkshire Futures Monthly jobs database

Confirmed Job Gains - January 2010

Company	Location	No. Jobs	Type of Service
-	-	-	-
Total		0	

Source: Yorkshire Futures Monthly jobs database

Figure: Jobs/Gains and net difference



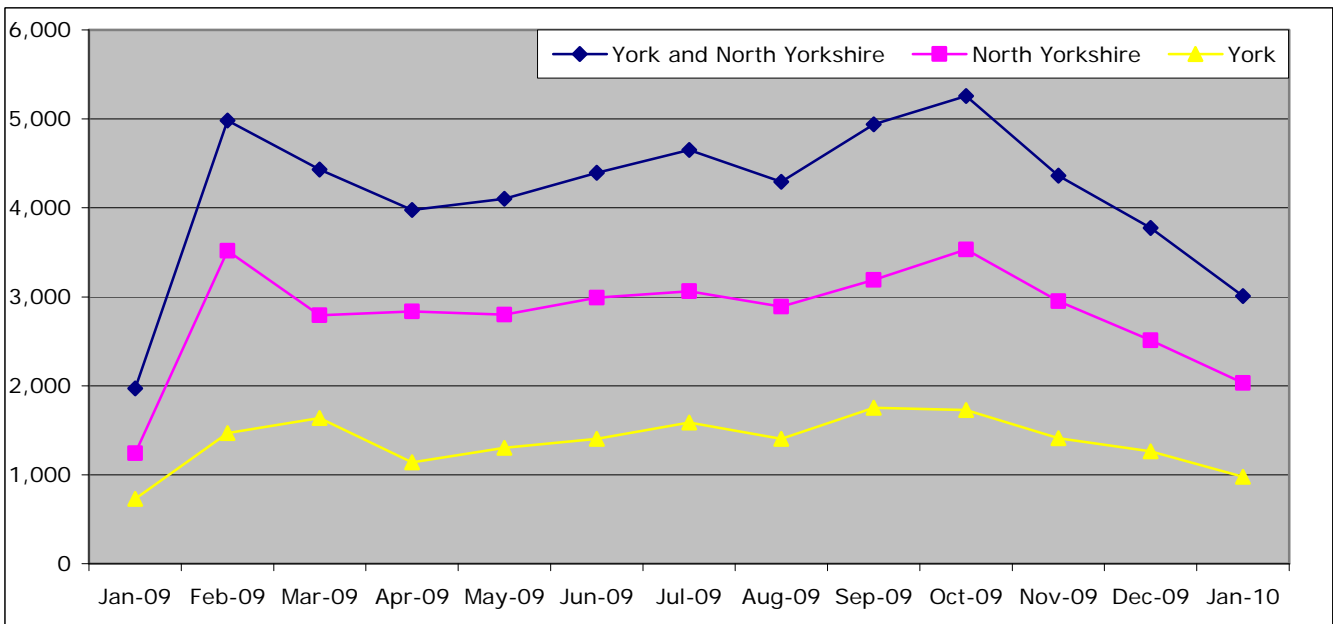
Source: Yorkshire Forward jobs database

Job Centre Plus – notified job vacancies

	January 2010	Monthly Change		Annual Change	
England	167,439	-81,547	-32.8%	56,147	50.5%
Yorkshire and Humber	17,201	-6,054	-26.0%	4,448	34.9%
York and North Yorkshire	3,008	-767	-20.3%	1,037	52.6%
North Yorkshire	2,030	-482	-19.2%	790	63.7%
York	978	-285	-22.6%	248	34.0%
Craven	197	42	27.1%	53	36.8%
Hambleton	326	-55	-14.4%	141	76.2%
Harrogate	605	-367	-37.8%	226	59.6%
Richmondshire	129	10	8.4%	67	108.1%
Ryedale	139	-7	-4.8%	64	85.3%
Scarborough	395	108	37.6%	110	38.6%
Selby	239	-213	-47.1%	129	117.3%

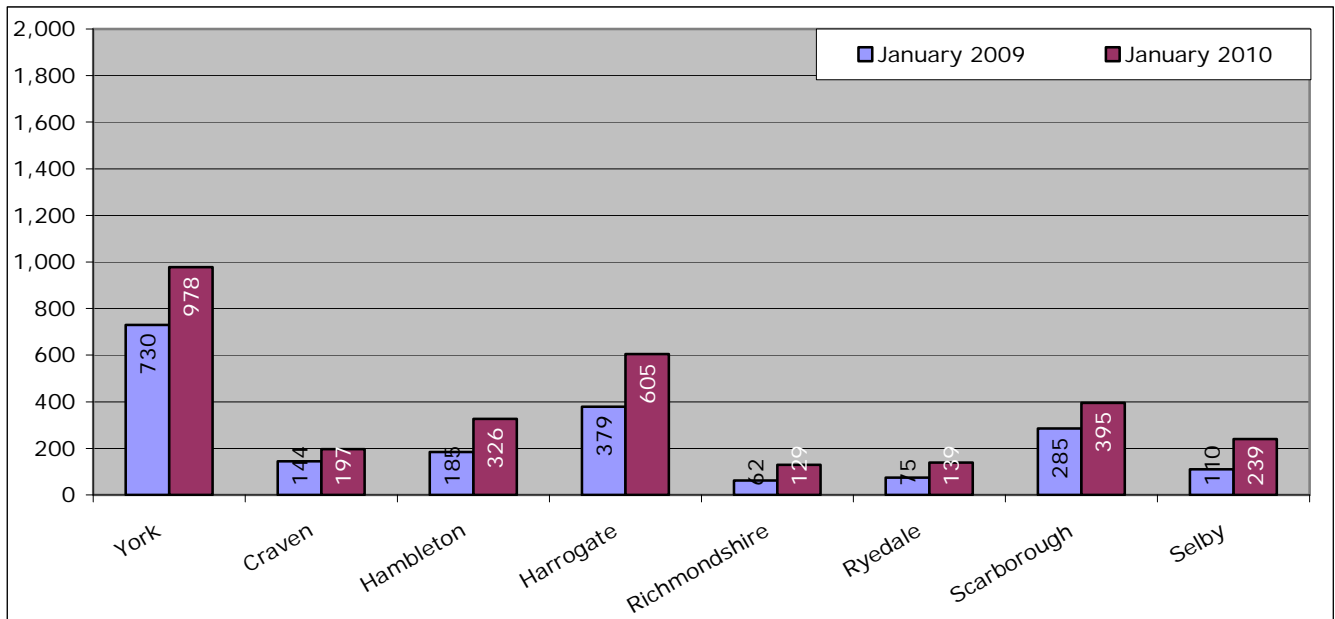
Source: Nomis

Figure: Number of vacancies trend



Source: Nomis

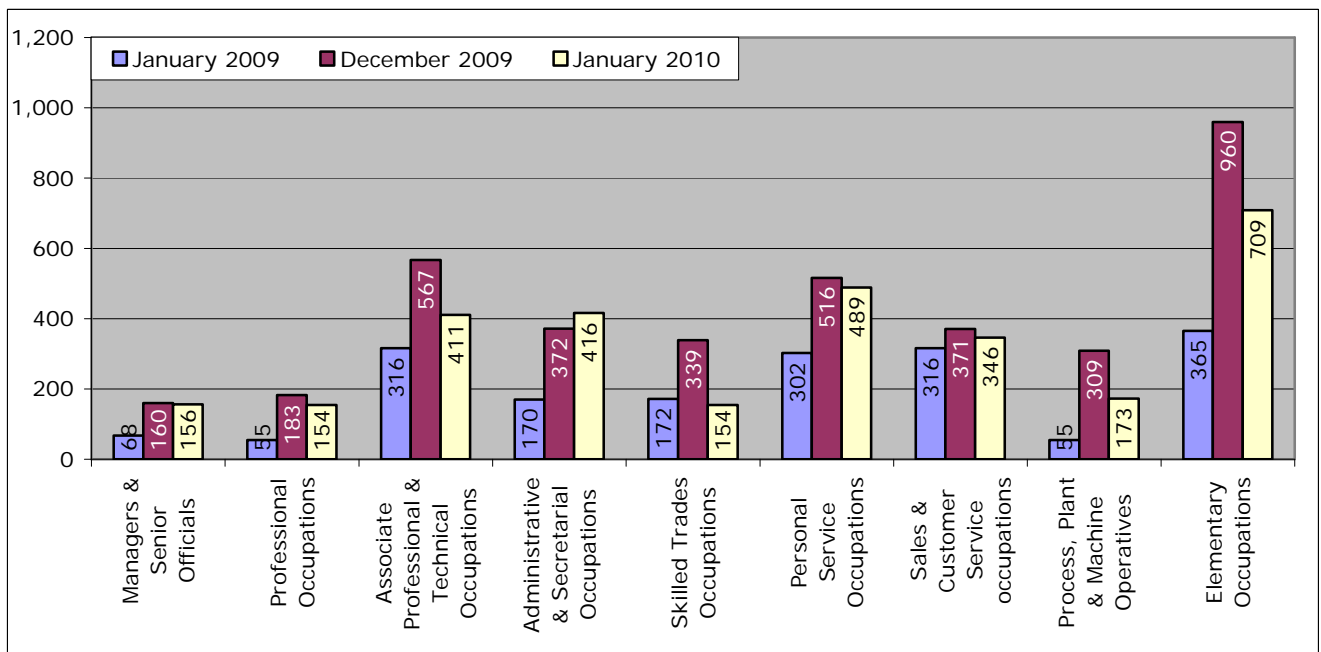
Figure: Number of Vacancies, Year on Year comparison



Source: Nomis

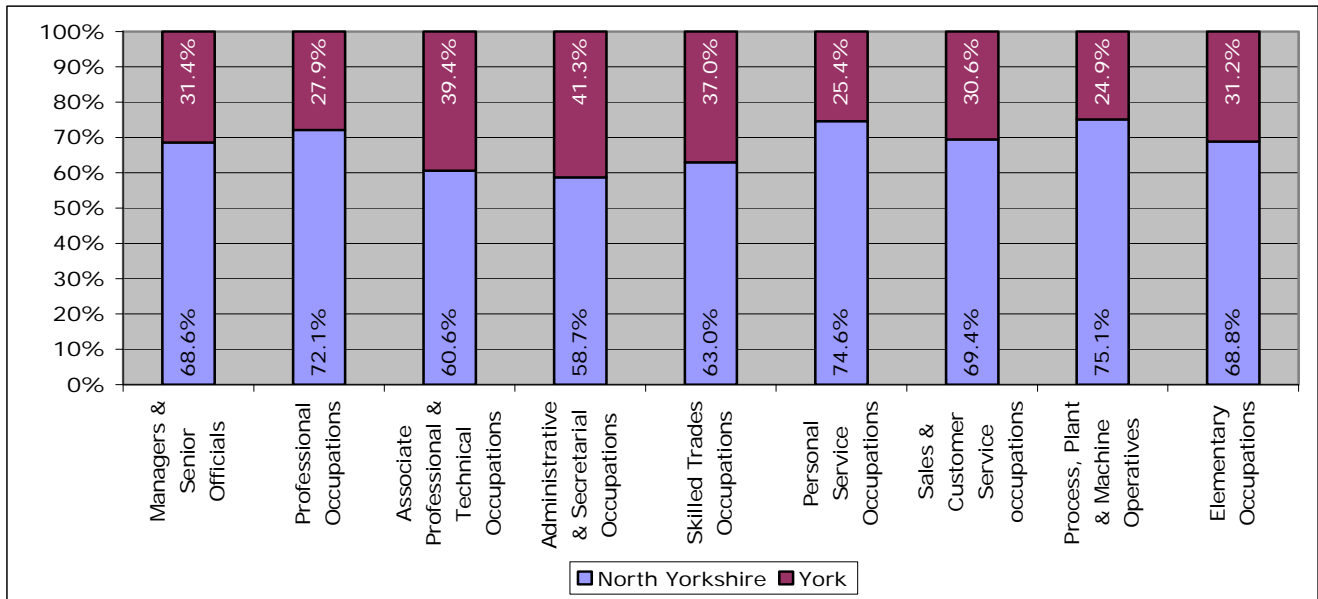
Vacancies by Occupation

Figure: Share of vacancies by occupation, York and North Yorkshire, year on year comparison



Source: Nomis

Figure: Distribution of vacancies by occupation between North Yorkshire & York, January 2010



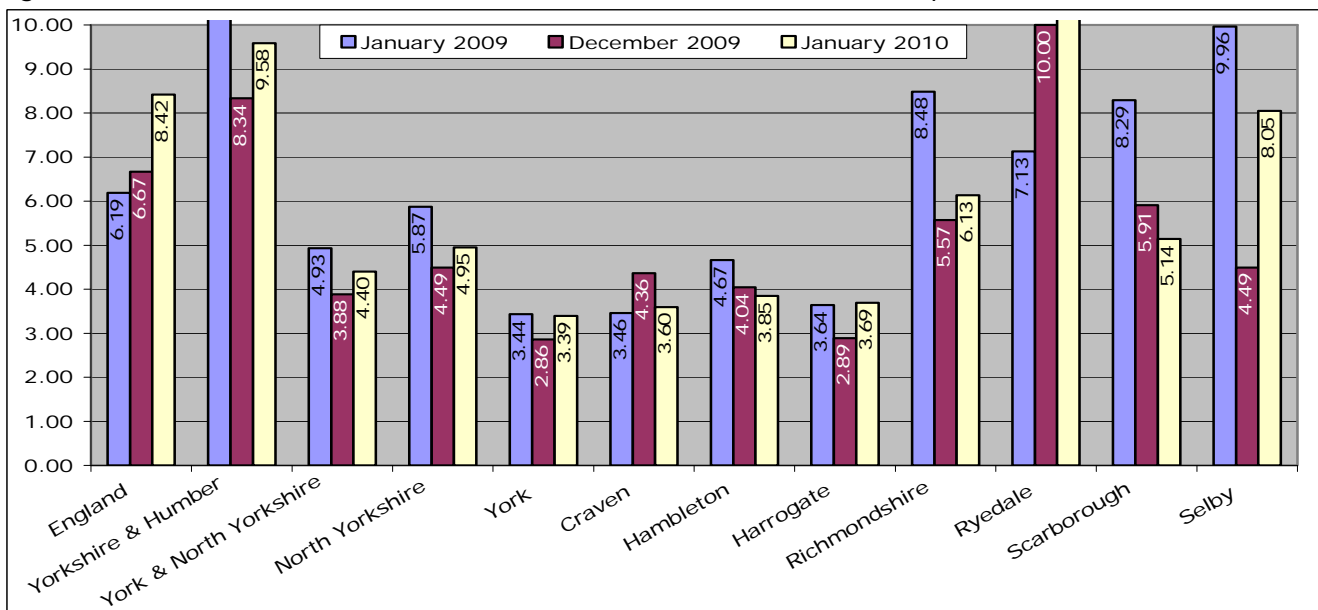
Source: Nomis

Number of Claimants to Notified Vacancies ratio

	January 2009	December 2009	January 2010	Annual Change	Monthly Change
England	6.19	6.67	8.42	2.23	1.75
Yorkshire and Humber	10.40	8.34	9.58	-0.82	1.25
York and North Yorkshire	4.93	3.88	4.40	-0.53	0.52
North Yorkshire	5.87	4.49	4.95	-0.92	0.46
York	3.44	2.86	3.39	-0.05	0.53
Craven	3.46	4.36	3.60	0.14	-0.77
Hambleton	4.67	4.04	3.85	-0.82	-0.19
Harrogate	3.64	2.89	3.69	0.05	0.80
Richmondshire	8.48	5.57	6.13	-2.35	0.56
Ryedale	7.13	10.00	11.34	4.21	1.34
Scarborough	8.29	5.91	5.14	-3.15	-0.76
Selby	9.96	4.49	8.05	-1.91	3.56

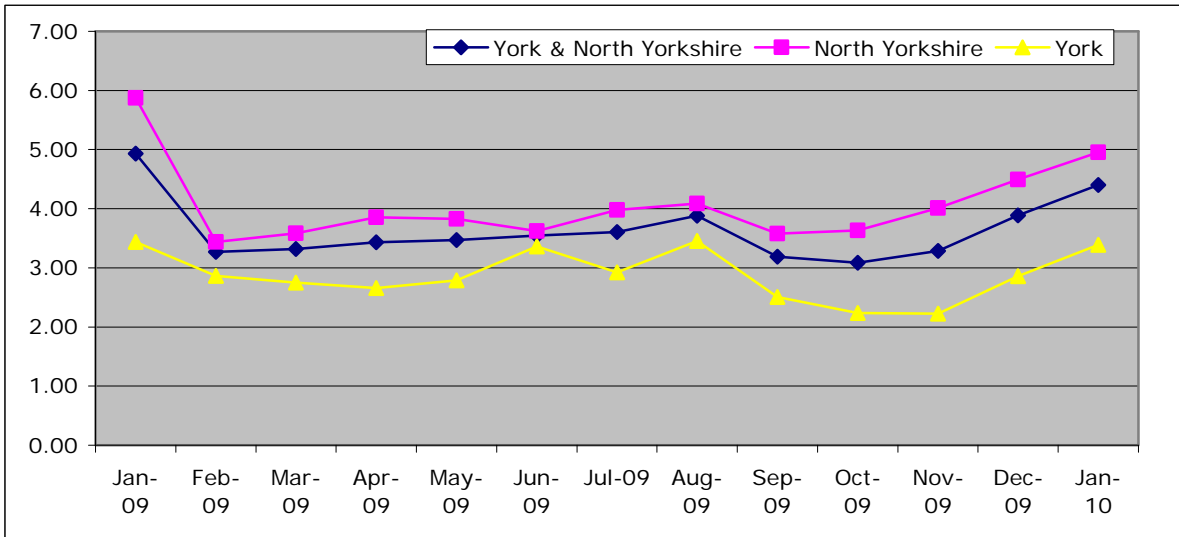
Source: Nomis

Figure: Number of Claimants to Notified Vacancies, Year on Year comparison



Source: Nomis

Figure: Number of Claimants to Notified Vacancies ratio trend



Source: Nomis

Unemployment

Total Claimant Count

	January 2010	Annual Change	Annual % Change	Monthly Change	Monthly % Change
England	1,369,811	303,972	28.5	67,712	5.2
Yorkshire and Humber	163,698	36,975	29.2	7,905	5.1
York and North Yorkshire	15,100	3,831	34.0	983	7.0
North Yorkshire	11,006	2,771	33.6	747	7.3
York	4,094	1,060	34.9	236	6.1
Craven	773	237	44.2	62	8.7
Hambleton	1,220	259	27.0	97	8.6
Harrogate	2,290	696	43.7	143	6.7
Richmondshire	644	84	15.0	20	3.2
Ryedale	873	281	47.5	63	7.8
Scarborough	3,435	798	30.3	222	6.9
Selby	1,771	416	30.7	140	8.6

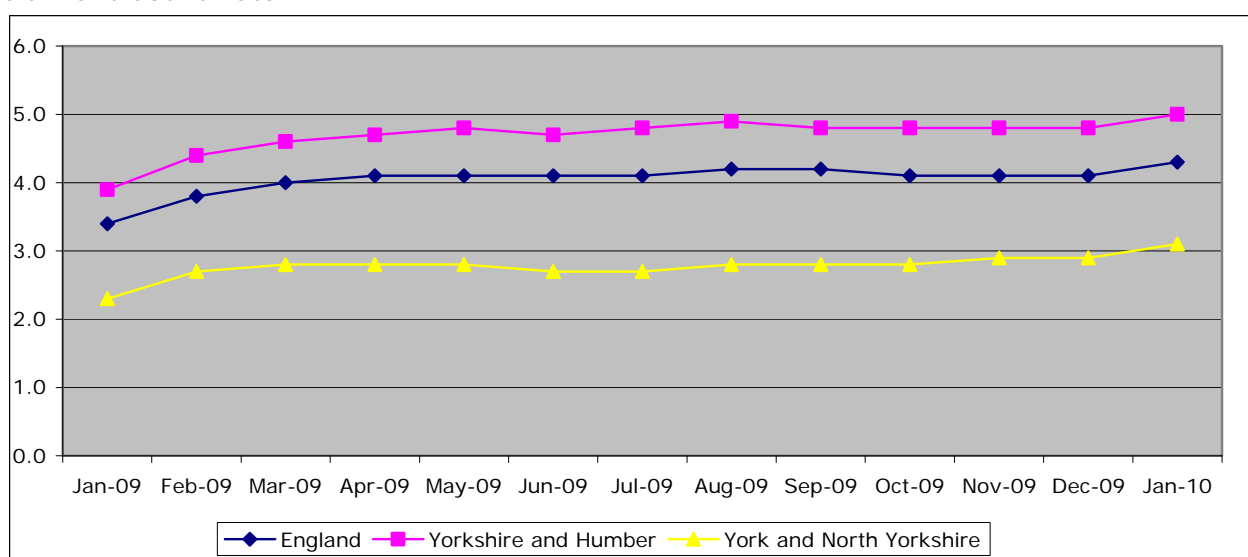
Source: Nomis

Claimant Count Rate

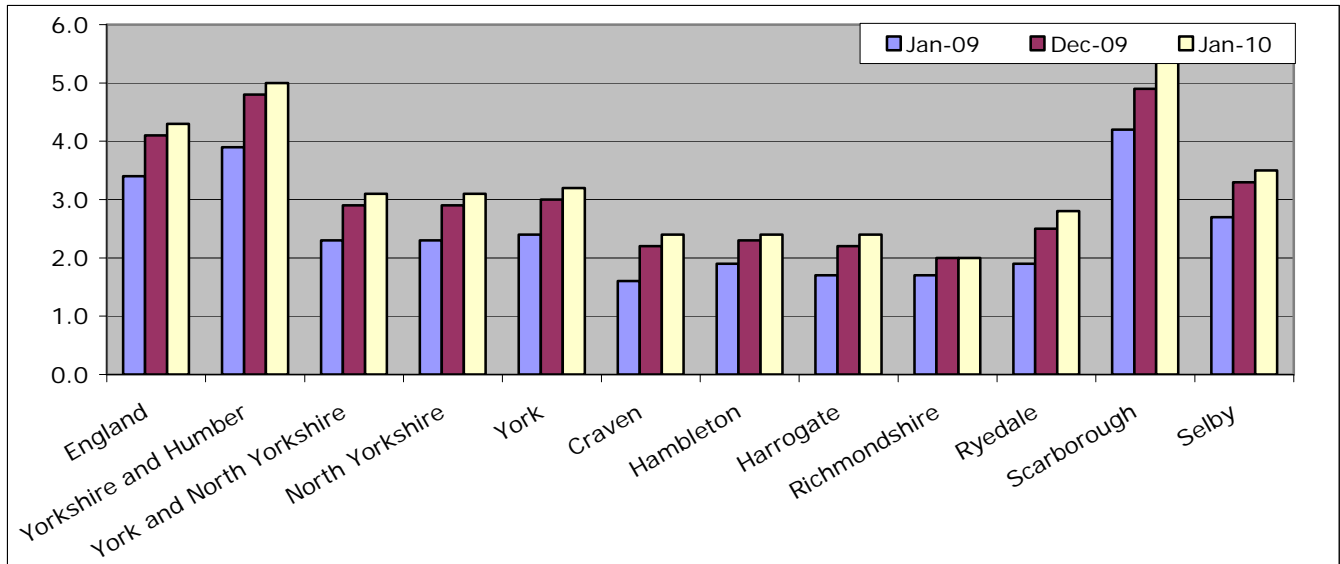
	England	Yorkshire and Humber	York and North Yorkshire
January 2009	3.4	3.9	2.3
February 2009	3.8	4.4	2.7
March 2009	4.0	4.6	2.8
April 2009	4.1	4.7	2.8
May 2009	4.1	4.8	2.8
June 2009	4.1	4.7	2.7
July 2009	4.1	4.8	2.7
August 2009	4.2	4.9	2.8
September 2009	4.2	4.8	2.8
October 2009	4.1	4.8	2.8
November 2009	4.1	4.8	2.9
December 2009	4.1	4.8	2.9
January 2010	4.3	5	3.1

Source: Nomis

Claimant Count Rate



Source: Nomis



Source: Nomis

Total Claiming for Over 12 months

	Jan-10	Annual Change	Annual % Change	Monthly Change	Monthly % Change
England	195,215	105,135	116.7	17,450	9.8
Yorkshire and Humber	23,030	13,690	146.6	2,130	10.2
York and North Yorkshire	1,835	1,185	182.3	215	13.3
North Yorkshire	1,335	880	193.4	165	14.1
York	500	305	156.4	50	11.1
Craven	75	55	275.0	15	25.0
Hambleton	135	75	125.0	10	8.0
Harrogate	260	170	188.9	40	18.2
Richmondshire	60	35	140.0	0	0.0
Ryedale	120	70	140.0	5	4.3
Scarborough	415	265	176.7	50	13.7
Selby	265	210	381.8	35	15.2

Source: Nomis

Total claiming for over 6 months

	January 2010	Annual Change	Annual % Change	Monthly Change	Monthly % Change
England	479,725	240,070	100.2	29,345	6.5
Yorkshire and Humber	57,305	29,390	105.3	3,795	7.1
York and North Yorkshire	4,515	2,555	130.4	335	8.0
North Yorkshire	3,265	1,865	133.2	250	8.3
York	1,255	690	122.1	90	7.7
Craven	205	115	127.8	20	10.8
Hambleton	355	195	121.9	25	7.6
Harrogate	700	405	137.3	60	9.4
Richmondshire	160	85	113.3	5	3.2
Ryedale	265	145	120.8	20	8.2
Scarborough	995	515	107.3	80	8.7
Selby	585	410	234.3	40	7.3

Source: Nomis

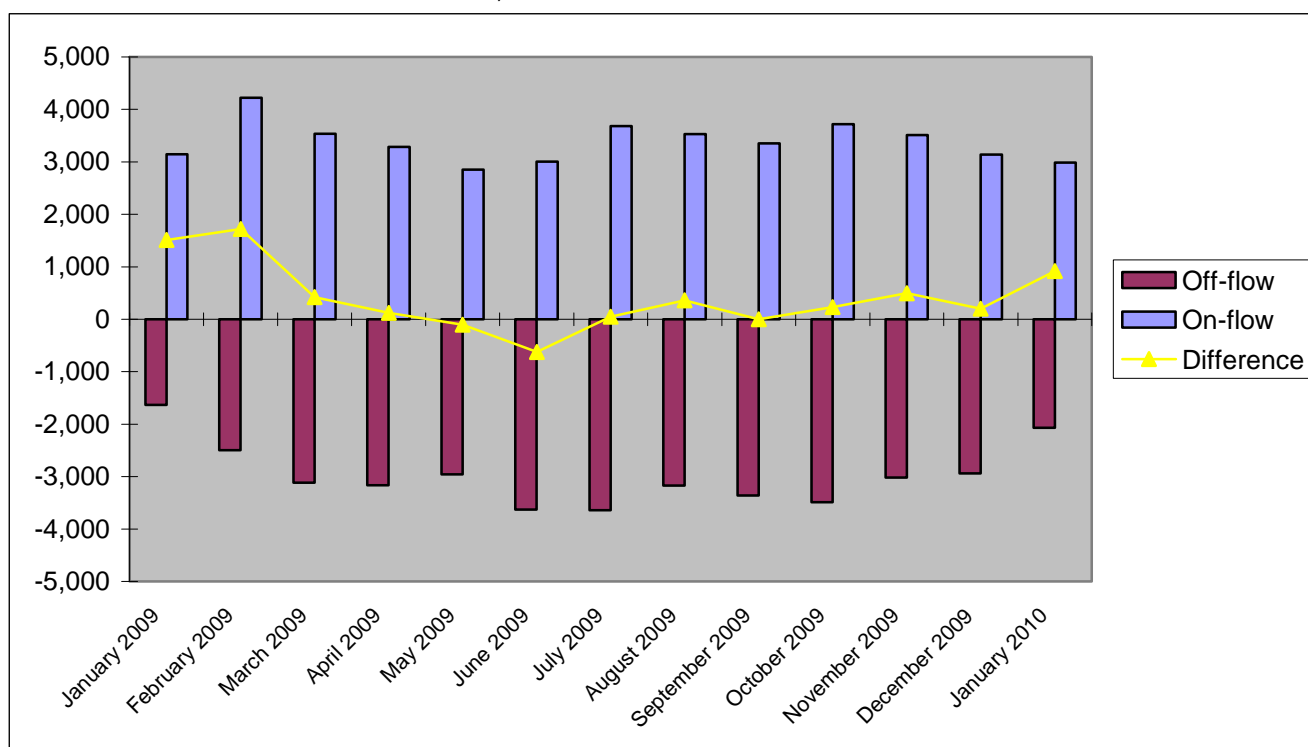
Claimant Count On-Flow and Off-Flow in York and North Yorkshire

	Off-flow	On-flow	Difference
January 2009	-1,636	3,146	1,510

February 2009	-2,499	4,220	1,721
March 2009	-3,115	3,535	420
April 2009	-3,167	3,288	121
May 2009	-2,956	2,850	-106
June 2009	-3,630	3,003	-627
July 2009	-3,641	3,687	46
August 2009	-3,169	3,532	363
September 2009	-3,357	3,355	-2
October 2009	-3,487	3,722	235
November 2009	-3,018	3,511	493
December 2009	-2,936	3,137	201
January 2010	-2,069	2,986	917

Source: Nomis

Claimant Count On flow and Off Flow, York and North Yorkshire



Source: Nomis

Claimant Count Off-Flow January 2010

	January 2010	Annual % Change	Monthly % Change
England	198,835	29.8	-24.5
Yorkshire and Humber	22,856	31.0	-20.8
York and North Yorkshire	2,069	26.5	-29.5
North Yorkshire	1,432	21.7	-32.1
York	637	38.8	-23.0
Craven	97	11.5	-32.2
Hambleton	173	30.1	-34.0
Harrogate	344	33.9	-32.3
Richmondshire	107	-2.7	-37.1
Ryedale	102	13.3	-37.8
Scarborough	387	20.6	-18.7
Selby	220	22.9	-43.2

Source: Nomis

Claimant Count On-Flow January 2010

	January 2010	Annual % Change	Monthly % Change
England	259,349	-3.9	-0.4
Yorkshire and Humber	29,997	-1.3	-3.6
York and North Yorkshire	2,986	-5.1	-4.8
North Yorkshire	2,131	-8.3	-7.2
York	855	4.1	1.7
Craven	154	-14.9	-9.9
Hambleton	263	-13.2	9.6
Harrogate	480	0.4	2.8
Richmondshire	140	-27.1	-11.4
Ryedale	159	8.9	-30.9
Scarborough	595	-0.7	-14.3
Selby	339	-20.4	0.9

Source: Nomis

Ratio of Claimant Count Off-flow to On-flow

	Jan-09	Dec-09	Jan-10	Annual Change	Monthly Change
England	1.8	0.99	1.30	-0.46	0.32
Yorkshire and Humber	1.7	1.08	1.31	-0.43	0.23
York and North Yorkshire	1.9	1.07	1.44	-0.48	0.37
North Yorkshire	2.0	1.09	1.49	-0.49	0.40
York	1.8	1.02	1.34	-0.45	0.33
Craven	2.1	1.20	1.59	-0.49	0.39
Hambleton	2.3	0.92	1.52	-0.76	0.60
Harrogate	1.9	0.92	1.40	-0.46	0.48
Richmondshire	1.7	0.93	1.31	-0.44	0.38
Ryedale	1.6	1.40	1.56	-0.06	0.16
Scarborough	1.9	1.46	1.54	-0.33	0.08
Selby	2.4	0.87	1.54	-0.84	0.67

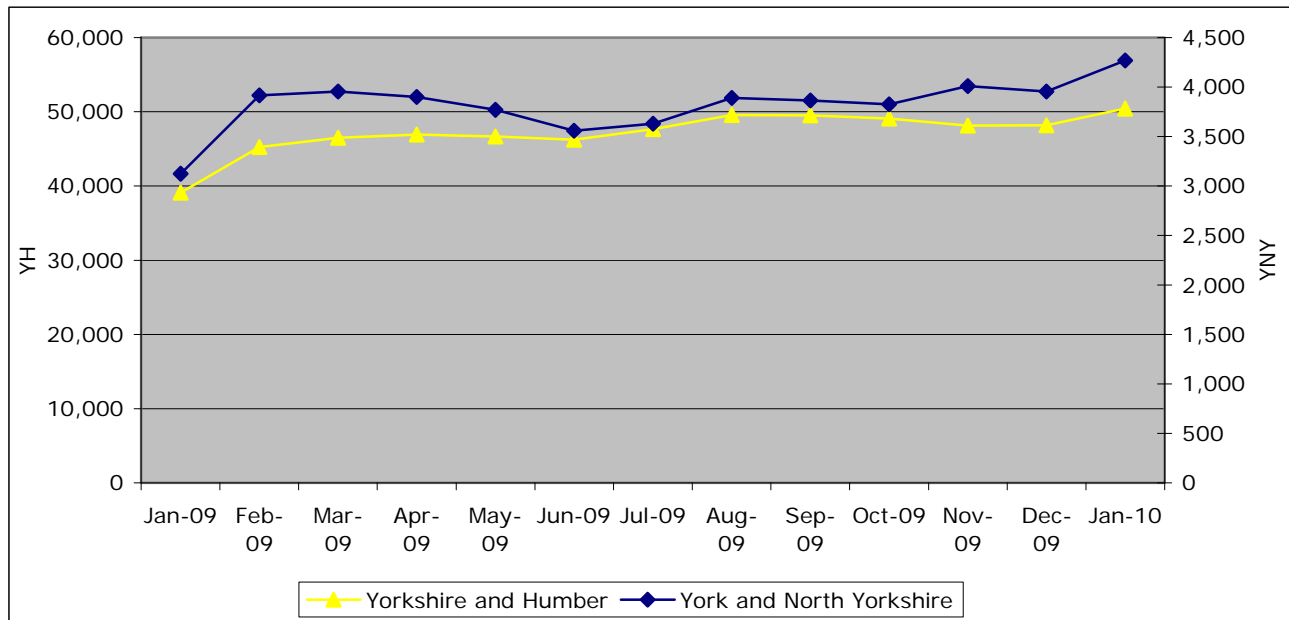
Source: Nomis

Claimant Count 18-24 year olds

	January 2010	Annual Change	Annual % Change	Monthly Change	Monthly % Change
England	396,730	85,440	27	18,035	4.8
Yorkshire and Humber	50,445	11,350	29	2,270	4.7
York and North Yorkshire	4,270	1,145	37	315	8.0
North Yorkshire	3,105	820	36	250	8.8
York	1,170	330	39	65	5.9
Craven	210	60	40	20	10.5
Hambleton	380	95	33	50	15.2
Harrogate	530	200	61	30	6.0
Richmondshire	195	30	18	10	5.4
Ryedale	255	70	38	15	6.3
Scarborough	1,055	265	34	75	7.7
Selby	470	95	25	35	8.0

Source: Nomis

Figure: 18 – 24 yr old claimants



Source: Nomis

Business Activity

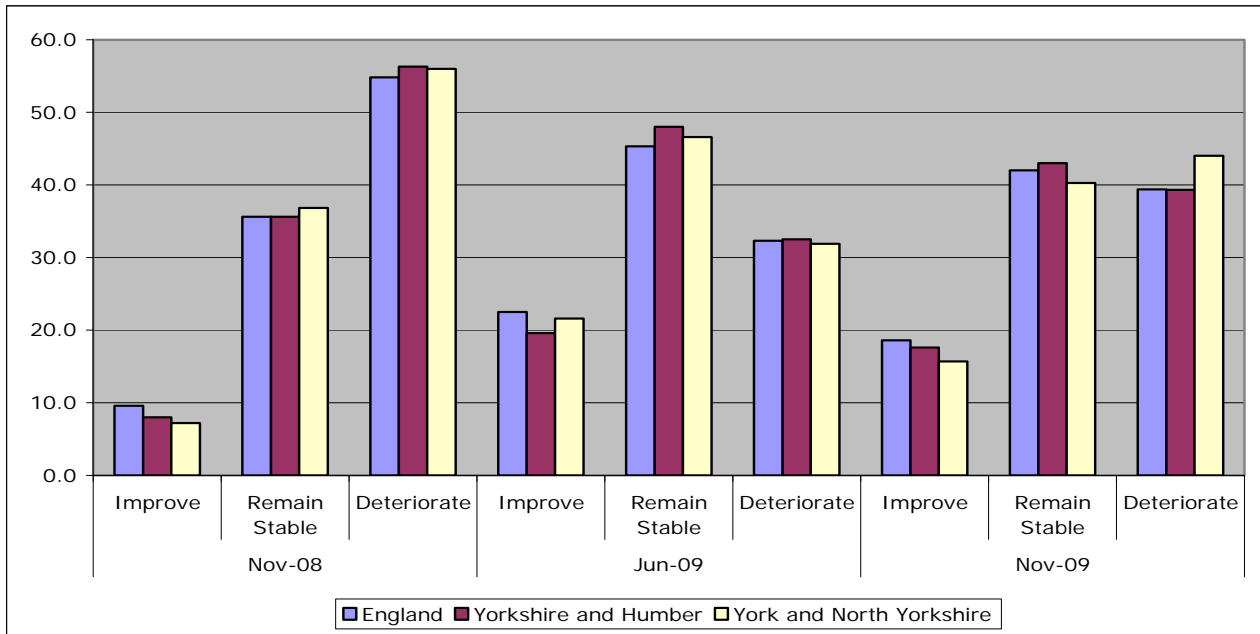
Business Confidence

The National Business Survey is a large scale research project conducted by Ipsos Mori on behalf of the RDA Network and Invest Northern Ireland. It explores perceptions of businesses across England and Northern Ireland, on current and recent business conditions as well as looking forward to potential issues and views on projected change over the coming months. The survey asks a series of questions on business confidence, a number of which are presented here.

Over the next 12 months do you expect the business climate in which your business operates to generally improve, remain stable, or deteriorate?

	Nov-08			Jun-09			Nov-09		
	Improve	Remain Stable	Deteriorate	Improve	Remain Stable	Deteriorate	Improve	Remain Stable	Deteriorate
England	9.6	35.6	54.8	22.5	45.3	32.3	18.6%	42.0%	39.4%
Yorkshire and Humber	8.0	35.6	56.3	19.6	48.0	32.5	17.6%	43.0%	39.3%
York and North Yorkshire	7.2	36.8	56.0	21.6	46.6	31.9	15.7%	40.3%	44.0%

Source: 'National Business Survey, November 2009, (Ipsos Mori on behalf of England's Regional Development Agencies and Invest Northern Ireland)'



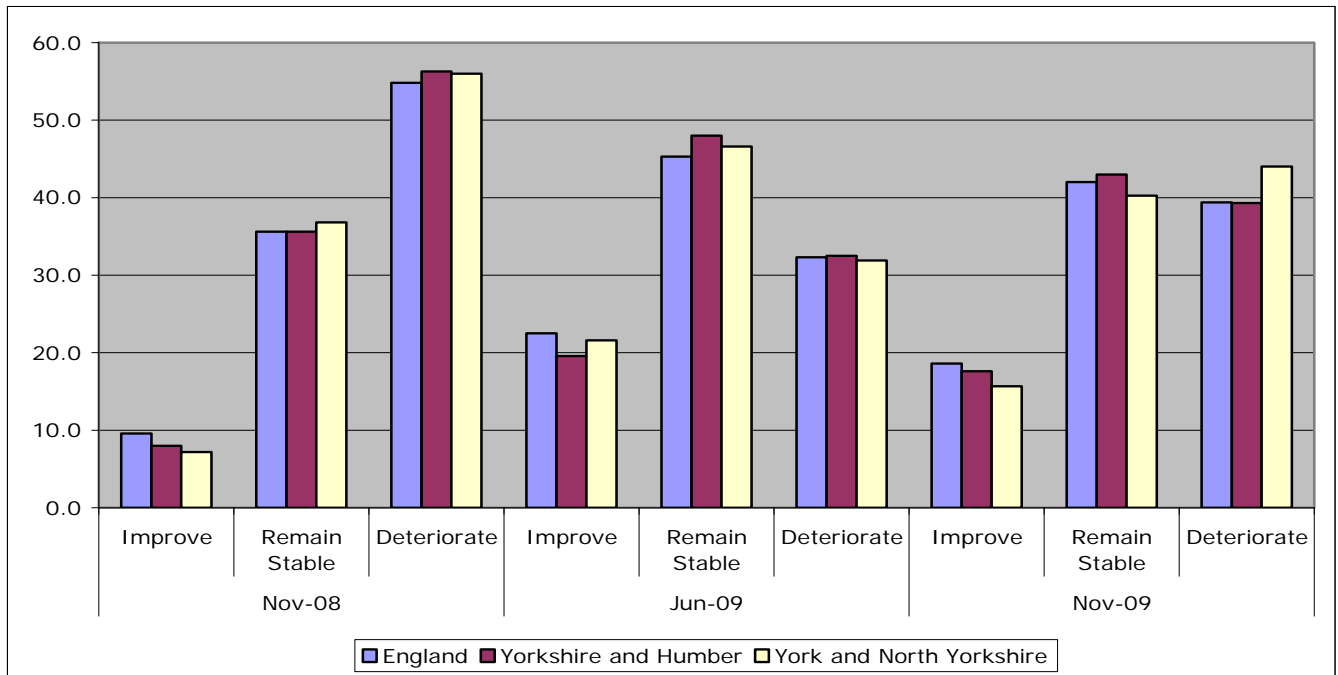
Source: 'National Business Survey, November 2009, (Ipsos Mori on behalf of England's Regional Development Agencies and Invest Northern Ireland)'

What has been the trend in the last 12 months with regard to numbers employed?

	Nov-08				Jun-09				Nov-09			
	Higher	Same	Lower	n/a	Higher	Same	Lower	n/a	Higher	Same	Lower	n/a
England	11.9	49.1	22.3	16.7	9.0	46.4	32.2	12.4	12.6%	46.5%	25.6%	15.3%
Yorkshire and Humber	13.4	46.9	24.4	15.2	7.1	44.5	29.8	18.6	16.3%	50.7%	19.2%	13.8%
York and North Yorkshire	12.8	43.9	20.0	23.3	6.3	50.9	24.3	18.5	14.5%	48.6%	22.4%	14.6%

	Nov-08				Jun-09				Nov-09			
	Higher	Same	Lower	n/a	Higher	Same	Lower	n/a	Higher	Same	Lower	n/a
England	11.9	49.1	22.3	16.7	9.0	46.4	32.2	12.4	12.6%	46.5%	25.6%	15.3%
Yorkshire and Humber	13.4	46.9	24.4	15.2	7.1	44.5	29.8	18.6	16.3%	50.7%	19.2%	13.8%
York and North Yorkshire	12.8	43.9	20.0	23.3	6.3	50.9	24.3	18.5	14.5%	48.6%	22.4%	14.6%

Source: 'National Business Survey, June 2009, (Ipsos Mori on behalf of England's Regional Development Agencies and Invest Northern Ireland)'



Source: 'National Business Survey, November 2009, (Ipsos Mori on behalf of England's Regional Development Agencies and Invest Northern Ireland)'

N.B. The National Business Survey data is a sample and subject to some survey error. Sample sizes are smaller at more local levels therefore the confidence intervals are higher. Sample size can vary over the different time periods.

Tourism

Number of Visits to Leisure Attractions in York and North Yorkshire

	No of Attractions Responding	Previous Year	Total	% Change
Jul-08	54	621,521	600,900	-3%
Aug-08	56	832,091	843,934	1%
Sep-08	56	530,743	446,212	-16%
Oct-08	50	422,394	381,563	-10%
Nov-08	40	197,447	184,794	-6%
Dec-08	36	194,004	150,948	-22%
Jan-09	58	153,038	120,111	-22%
Feb-09	44	-	-	-16%
Mar-09	63	-	-	-11%
Apr-09	54	-	-	47%
May-09	54	-	-	11.1%
Jun-09	56			3.7%
Jul-09	57			7.2%

Source: Visitor Attraction Monitor, Yorkshire Tourist Board

Housing

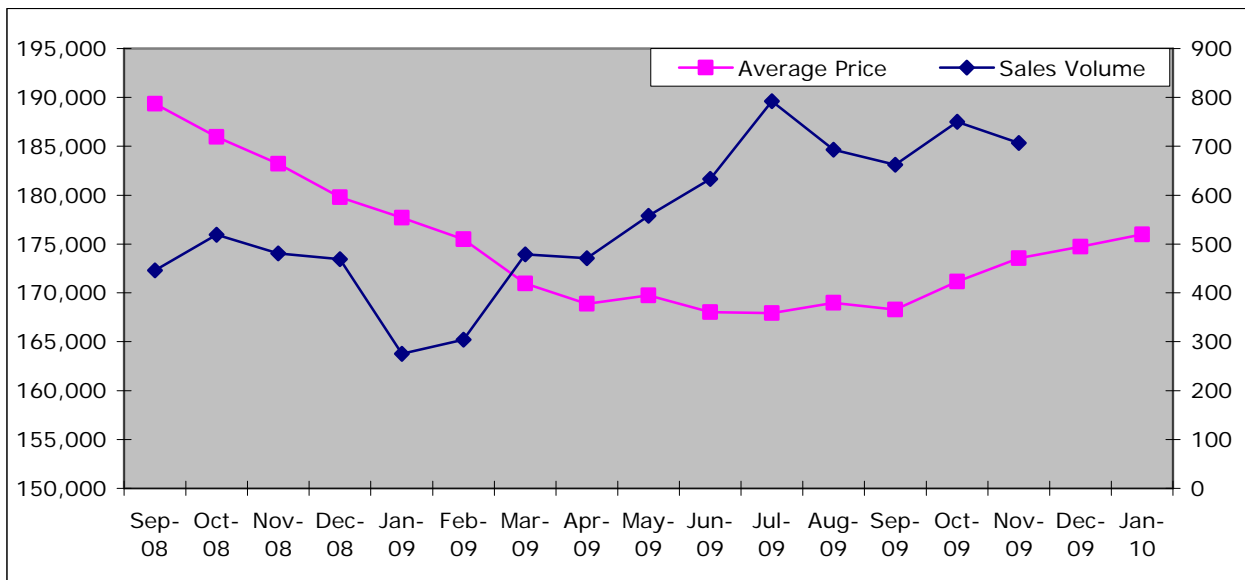
Land Registry House Price Index

North Yorkshire

	Index	Average Price	Monthly Change	Annual Change	Sales Volume
Sep-08	278.6	189,350	-1.8	-4.6	446
Oct-08	273.6	185,958	-1.8	-6.6	519
Nov-08	269.5	183,218	-1.5	-8.0	481
Dec-08	264.5	179,799	-1.9	-10.2	469
Jan-09	261.4	177,687	-1.2	-11.4	275
Feb-09	258.2	175,501	-1.2	-12.1	304
Mar-09	251.5	170,942	-2.6	-14.4	479
Apr-09	248.5	168,893	-1.2	-13.9	471
May-09	249.7	169,729	0.5	-13.3	558
Jun-09	247.2	168,033	-1.0	-13.5	633
Jul-09	247.1	167,942	-0.1	-13.1	792
Aug-09	248.6	168,981	0.6	-12.3	693
Sep-09	247.6	168,282	-0.4	-11.1	662
Oct-09	251.8	171,148	1.7	-8.0	750
Nov-09	255.3	173,536	1.4	-5.3	707
Dec-09	257.1	174,735	0.7	-2.8	
Jan-10	258.9	175,967	0.7	-1.0	

Source: Land Registry, House Price Index
- Data not available

Figure: North Yorkshire – Average Price & Sales Volume



Source: Land Registry, House Price Index

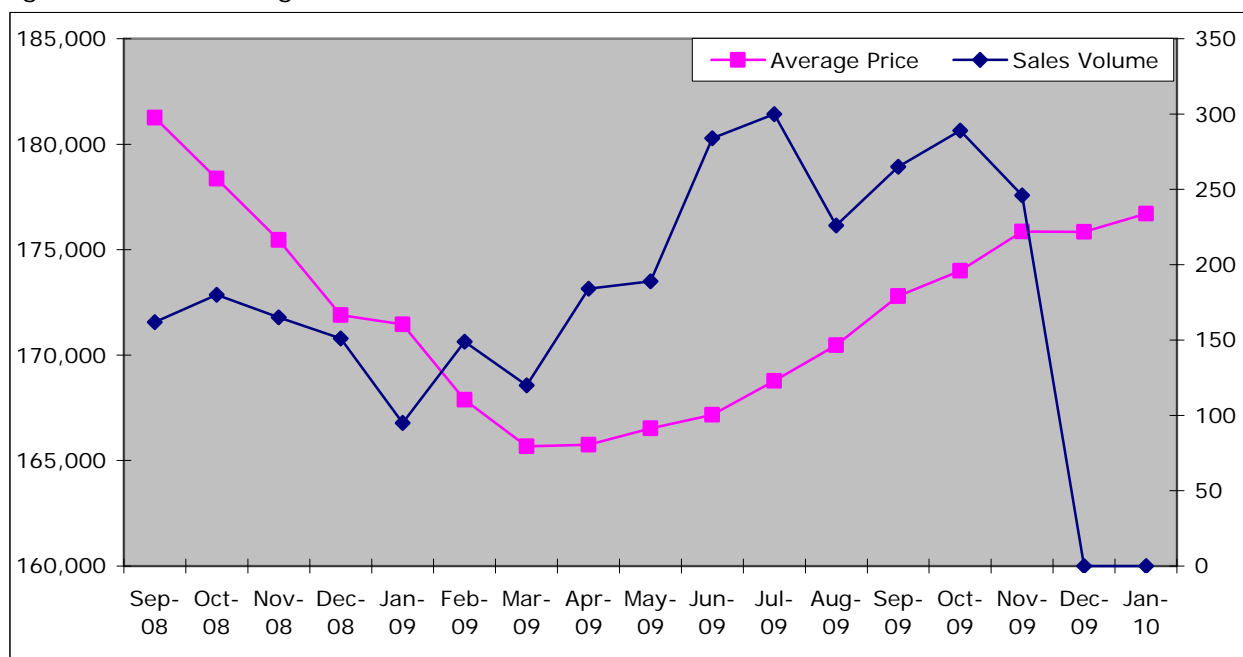
York – Average Price & Sales Volume

	Index	Average Price	Monthly Change	Annual Change	Sales Volume
Sep-08	279.2	181,255	-3.6	-6.8	162
Oct-08	274.8	178,362	-1.6	-8.4	180
Nov-08	270.3	175,456	-1.6	-9.3	165
Dec-08	264.8	171,905	-2.0	-11.1	151
Jan-09	264.2	171,465	-0.3	-11.1	95
Feb-09	258.6	167,879	-2.1	-13.4	149

Mar-09	255.2	165,673	-1.3	-13.9	120
Apr-09	255.4	165,751	0.0	-13.7	184
May-09	256.6	166,533	0.5	-13.2	189
Jun-09	257.5	167,168	0.4	-11.6	284
Jul-09	260.0	168,784	1.0	-11.0	300
Aug-09	262.6	170,469	1.0	-9.3	226
Sep-09	266.2	172,792	1.4	-4.7	265
Oct-09	268.1	173,998	0.7	-2.4	289
Nov-09	270.9	175,856	1.1	0.2	246
Dec-09	270.9	175,840	0.0	2.3	-
Jan-10	272.2	176,701	0.5	3.1	-

Source: Land Registry, House Price Index
- Data not available

Figure: York – Average Price & Sales Volume



Source: Land Registry, House Price Index

Mean House Prices

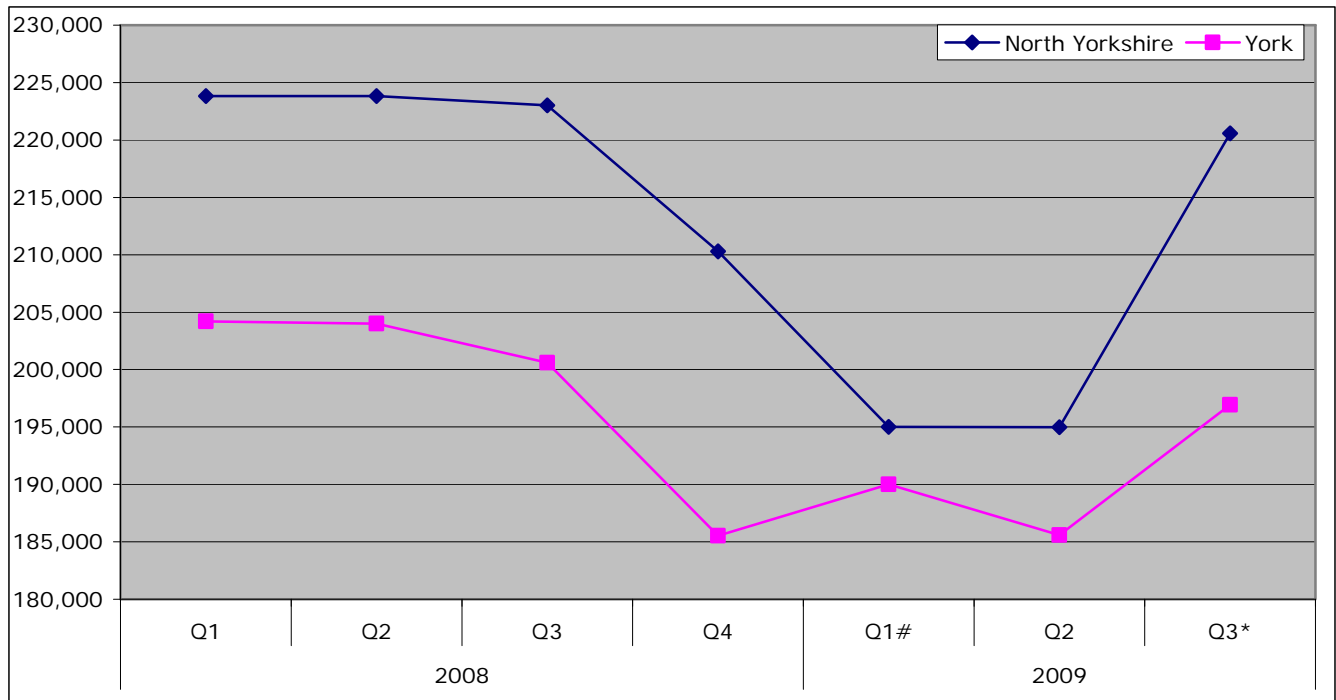
	2008				2009			% Change on previous year	% Change on previous Quarter
	Q1	Q2	Q3	Q4	Q1#	Q2	Q3*		
England	221,270	222,441	227,182	207,372	200,539	206,034	226,648	-0.2%	10.0%
Yorkshire & Humber	155,180	159,859	156,608	150,688	140,852	146,489	159,145	1.6%	8.6%
York & North Yorkshire	220,471	220,073	219,456	207,143	191,931	190,597	213,627	-2.7%	12.1%
North Yorkshire	223,812	223,835	223,002	210,287	195,019	194,982	220,595	-1.1%	13.1%
York	204,209	204,004	200,603	185,531	189,994	185,595	196,949	-1.8%	6.1%
Craven	206,501	211,979	213,589	202,136	168,367	193,672	204,456	-4.3%	5.6%
Hambleton	231,621	248,417	240,533	254,409	197,409	213,195	224,488	-6.7%	5.3%
Harrogate	280,397	286,204	269,747	244,392	239,973	238,305	272,620	1.1%	14.4%
Richmondshire	210,311	230,944	223,971	190,838	208,510	196,254	233,753	4.4%	19.1%
Ryedale	266,365	225,208	239,240	233,013	210,153	180,015	223,842	-6.4%	24.3%
Scarborough	179,150	169,107	167,178	172,640	150,757	147,100	162,299	-2.9%	10.3%
Selby	185,217	184,721	200,788	174,182	170,288	170,643	190,610	-5.1%	11.7%

Source: DCLG

Data has been revised

* Data is provisional

Figure: Mean House Prices, North Yorkshire and York



Source: DCLG

Data has been revised

* Data is provisional

Property Sales

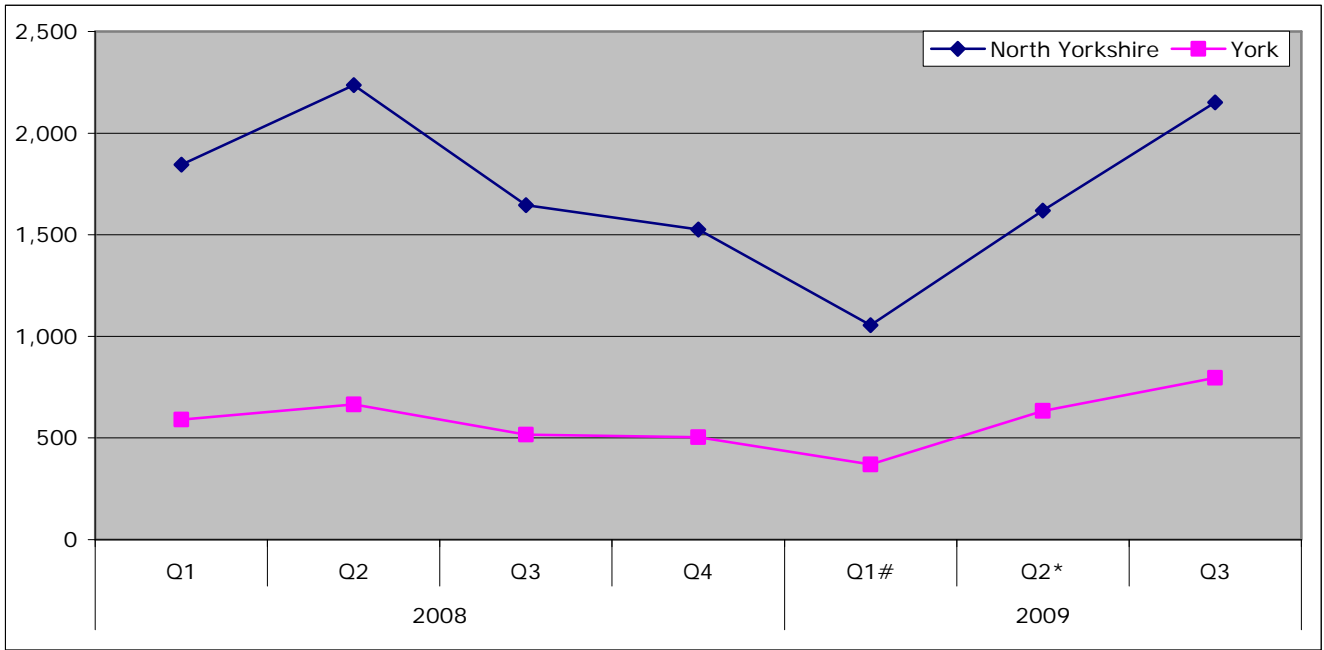
	2008				2009			% Change on previous year	% Change on previous Quarter
	Q1	Q2	Q3	Q4	Q1#	Q2*	Q3		
England	173,560	181,420	138,533	116,327	87,289	126,631	166,826	20.4%	31.7%
Yorkshire & Humber	17,276	18,717	14,017	12,059	8,537	12,004	14,522	3.6%	21.0%
York & North Yorkshire	2,436	2,902	2,162	2,030	1,424	2,253	2,947	36.3%	30.8%
North Yorkshire	1,845	2,237	1,646	1,526	1,055	1,619	2,151	30.7%	32.9%
York	591	665	516	504	369	634	796	54.3%	25.6%
Craven	173	223	161	163	92	133	224	39.1%	68.4%
Hambleton	222	292	244	202	145	231	303	24.2%	31.2%
Harrogate	489	537	443	352	316	450	605	36.6%	34.4%
Richmondshire	133	188	94	94	61	110	154	63.8%	40.0%
Ryedale	124	178	127	146	67	121	189	48.8%	56.2%
Scarborough	448	485	381	347	240	335	403	5.8%	20.3%
Selby	256	334	196	222	134	239	273	39.3%	14.2%

Source: DCLG

Data has been revised

* Data is provisional

Figure: Number of Property Sales, North Yorkshire and York



Source: DCLG

Data has been revised

* Data is provisional

Mortgage and Landlord Possession Claims/Orders

The following data indicates the number of claims/orders that have been issued at County Court level for possession of properties either under mortgage or landlord possession.

N.B. Important note - Introduction of Mortgage Pre-Action Protocol (MPAP) on 19 November 2008.

A new mortgage pre action protocol (MPAP), was introduced for possession claims in the County Courts with effect from 19 November 2008.

Evidence from administrative records from October to December 2008 suggests that this date coincided with a fall of around 50% in the daily and weekly numbers of new mortgage repossession claims being issued in the courts. It therefore seems highly likely that the launch of the MPAP has led to a marked fall in the number of new claims being issued during the latter part of the period covered by this bulletin. However, given the apparent cause, users should exercise caution in drawing broader inferences from the fall in mortgage possession claims issued in Q4 2008.

Mortgage possession orders are typically made around 8 weeks after the corresponding claims are issued. For this reason, the impact of the MPAP is expected to occur during the early months of 2009. At this early stage is not clear to what extent the launch of the MPAP has led to a permanent fall in the numbers of new mortgage possession claims being issued, as opposed to some merely being postponed. This will become clearer as statistics for 2009 are published.

Mortgage Possession Claims Issued

	Q1 2008	Q2 2008	Q3 2008	Q4 2008	Q1 2009	Q2 2009	Q3 2009	Q4 2009	% change since Q4 2008	chan since 20
Yorkshire & Humber	4,038	3,928	3,962	2,669	2,476	2,760	2,820	1,990	-25.4%	-29.4
York & North Yorkshire	360	337	358	258	237	245	230	220	-14.7%	-4.3
Harrogate	59	56	44	45	40	45	50	40	-11.1%	-20.0
Scarborough	120	97	138	93	78	80	65	60	-35.5%	-7.7
Skipton	33	41	29	20	24	25	25	25	25.0%	0.0
York	148	143	147	100	95	95	90	70	-30.0%	-22.2

Source: Ministry of Justice

Mortgage Possession Orders Issued

	Q1 2008	Q2 2008	Q3 2008	Q4 2008	Q1 2009	Q2 2009	Q3 2009	Q4 2009	% change since Q4 2008	% change since Q3 2009
Yorkshire & Humber	2,671	2,656	2,434	2,438	2,370	2,340	2,215	2,205	-9.6%	-9.6%
York & North Yorkshire	280	252	288	266	232	240	210	250	-6.0%	-6.0%
Harrogate	46	48	56	40	33	40	35	25	-37.5%	-37.5%
Scarborough	82	64	81	85	60	75	65	65	-23.5%	-23.5%
Skipton	15	8	16	18	12	10	10	10	-44.4%	-44.4%
York	137	132	135	123	127	115	100	100	-18.7%	-18.7%

Source: Ministry of Justice

Landlord Possession Claims issued

	Q1 2008	Q2 2008	Q3 2008	Q4 2008	Q1 2009	Q2 2009	Q3 2009	Q4 2009	% change since Q4 2008	% change since Q3 2009
Yorkshire & Humber	-	-	-	-	1,821	1,920	2,325	1,875	-	-19.4%
York & North Yorkshire	-	-	-	-	152	160	195	175	-	-10.3%
Harrogate	-	-	-	-	30	25	40	30	-	-25.0%
Scarborough	90	80	116	113	57	45	65	35	-69.0%	-46.2%
Skipton	29	32	31	27	15	20	15	15	-44.4%	0.0%
York	100	106	93	123	50	70	75	55	-55.3%	-26.7%

Source: Ministry of Justice

Landlord Possession Orders issued

	Q1 2008	Q2 2008	Q3 2008	Q4 2008	Q1 2009	Q2 2009	Q3 2009	Q4 2009	% change since Q4 2008	change since 2009
Yorkshire & Humber	-	-	-	-	2,403	1,660	1,815	1,725	-	-5.0%
York & North Yorkshire	-	-	-	-	233	-	190	220	-	15.8%
Harrogate	-	-	-	-	44	20	35	25	-	-28.6%
Scarborough	76	52	69	75	70	30	70	55	-26.7%	-21.4%
Skipton	16	5	13	12	12	*	15	10	-16.7%	-33.3%
York	110	75	106	116	107	95	70	90	-22.4%	28.6%

Source: Ministry of Justice

* The figure is not provided as the number of claims leading to an order made is either 7 or less, or if it is a % change where there are fewer than 30 observations in the base period

Planning

Total Planning Decisions

	Q1 2008	Q2 2008	Q3 2008	Q4 2008	Q1 2009	Q2 2009	Annual Change		Quarterly Change	
England	131,704	144,700	-	115,489	93,100	105,000	-39,700	-27.4%	11,900	12.8%
Yorkshire and Humber	11,534	12,100	-	9,937	7,800	8,900	-3,200	-26.4%	1,100	14.1%
York and North Yorkshire	2,806	3,125	-	2,513	2,111	2,197	-928	-29.7%	86	4.1%
North Yorkshire	2,352	2,613	2,459	2,058	1,737	1,818	-795	-30.4%	81	4.7%
York	454	512	#	455	374	379	-133	-26.0%	5	1.3%
Craven	170	193	200	117	121	#	#	#	#	#
Hambleton	323	399	360	300	278	337	-62	-15.5%	59	21.2%
Harrogate	642	672	561	613	461	427	-245	-36.5%	-34	-7.4%
Richmondshire	154	183	199	141	138	173	-10	-5.5%	35	25.4%
Ryedale	188	228	258	180	155	187	-41	-18.0%	32	20.6%
Scarborough	276	265	240	186	165	188	-77	-29.1%	23	13.9%
Selby	260	296	276	213	168	211	-85	-28.7%	43	25.6%
North York Moors	195	197	216	166	143	160	-37	-18.8%	17	11.9%
Yorkshire Dales	144	180	149	142	108	135	-45	-25.0%	27	25.0%

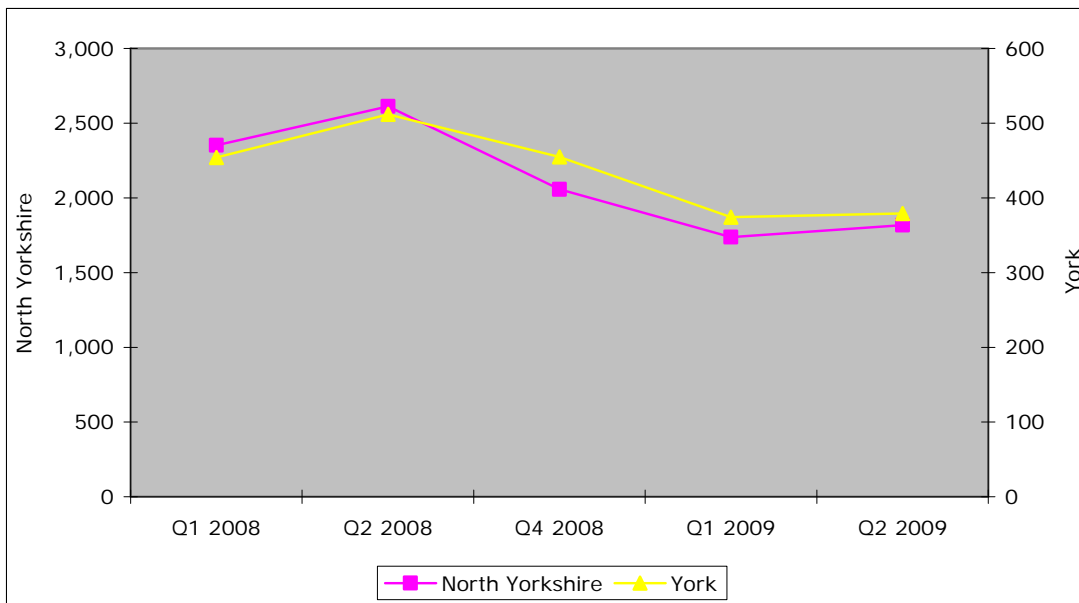
Source: Statistics of Planning Decisions, CLG

Data not submitted

- Data cannot be calculated

The figures for York and North Yorkshire and North Yorkshire for Q2 2009 does not include data for Craven

Figure: Total Planning Decisions, North Yorkshire/York



Source: Statistics of Planning Decisions, CLG

N.B. The number of decisions made in Q3 2008 is not available and therefore excluded from the chart. The figure for North Yorkshire for Q2 2009 does not include data for Craven

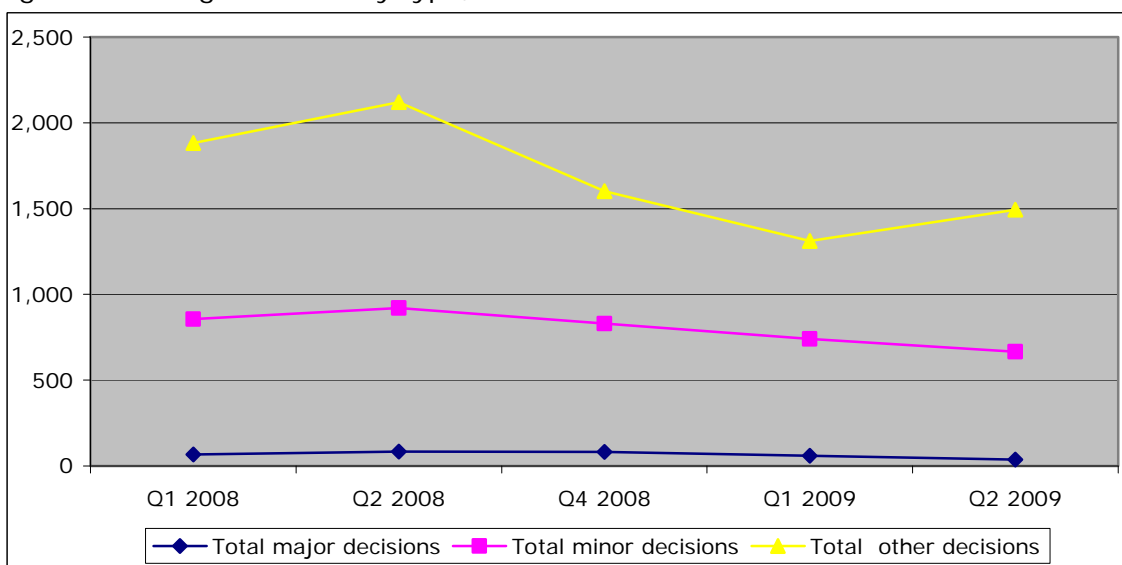
Breakdown of planning decisions by type in York and North Yorkshire

	Q1 2008	Q2 2008	Q3 2008	Q4 2008	Q1 2009	Q2 2009
Total major decisions	67	83	-	81	60	37
Total minor decisions	856	921	-	830	740	666
Total other decisions	1,883	2,121	-	1,602	1,311	1,494
Total	2,806	3,125	-	2,513	2,111	2,197

Source: Statistics of Planning Decisions, CLG

N.B Figures shown for Q2 2009 does not include data for Craven

Figure: Planning Decisions by type, York and North Yorkshire



Source: Statistics of Planning Decisions, CLG

N.B. The total number of decisions made in Q3 2008 is unknown and therefore excluded from the chart. N.B Figures shown for Q2 2009 does not include data for Craven

Breakdown of planning decisions by type, North Yorkshire

	Q1 2008	Q2 2008	Q3 2008	Q4 2008	Q1 2009	Q2 2009
Total major decisions	58	66	54	69	50	33
Total minor decisions	750	799	807	700	630	575
Total other decisions	1,544	1,748	1,598	1,289	1,057	1,210
Total	2,352	2,613	2,459	2,058	1,737	1,818

Source: Statistics of Planning Decisions, CLG

N.B Figures shown for Q2 2009 does not include data for Craven

Breakdown of planning decisions by type, York

	Q1 2008	Q2 2008	Q3 2008	Q4 2008	Q1 2009	Q2 2009
Total major decisions	9	17	#	12	10	4
Total minor decisions	106	122	#	130	110	91
Total other decisions	339	373	#	313	254	284
Total	454	512	#	455	374	379

Source: Statistics of Planning Decisions, CLG

Data not submitted

Community and Voluntary Sector

Demand for CAB services

2009/10 Q3	Craven	Hambleton	Richmondshire	Ripon	Ryedale	Scarborough	Selby
Benefits	607	903	805	446	703	984	1247
Debt	414	1598	1016	113	826	1732	1432
Employment	224	291	252	111	129	286	1128
Health & Community	38	34	26	25	16	43	29
Relationships & family	84	146	156	49	53	145	169
Total	1367	2972	2255	744	1727	3190	4005

Source: York and North Yorkshire Infrastructure Consortium.

N.B it is hoped CAB figures for York and Harrogate will be included next quarter. A new sub-regional figure is included in the main report.