

## National Picture

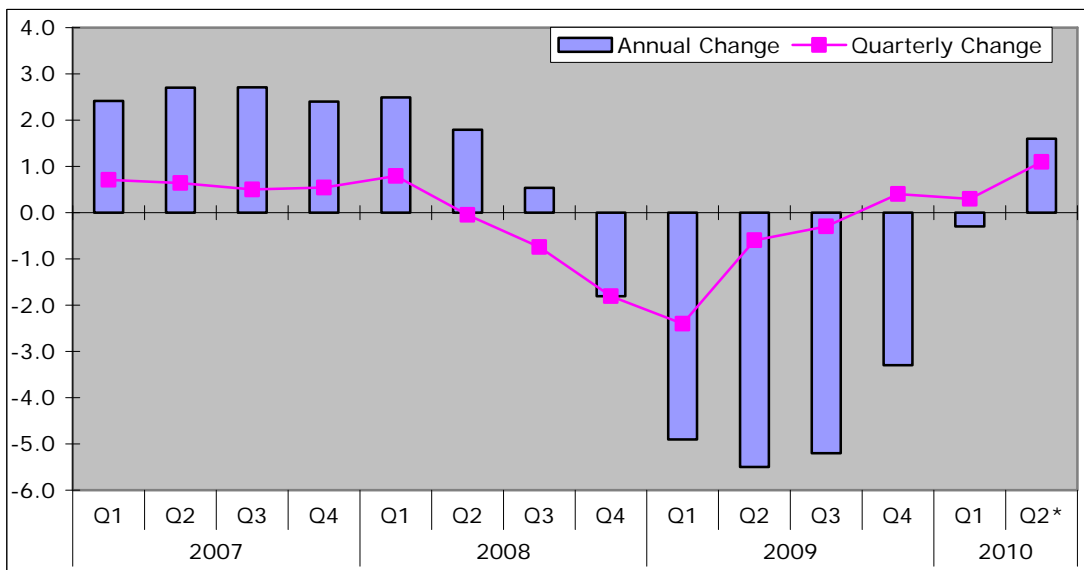
Key Indicators	May 2010	June 2010 *	Change
Inflation figures - CPI	3.4	3.2	-0.2
Inflation figures - RPI	5.1	5.0	-0.1
New Businesses - VAT Registrations	14,865	15,810	945 6.4%
VAT De-registrations	18,860	19,681	821 4.4%

Source: ONS, UK Trade Info

\* Provisional

◆ Preliminary estimates suggest GDP increased by 1.1% in Q2 of 2010 and increased by 1.6% compared to Q2 2009.

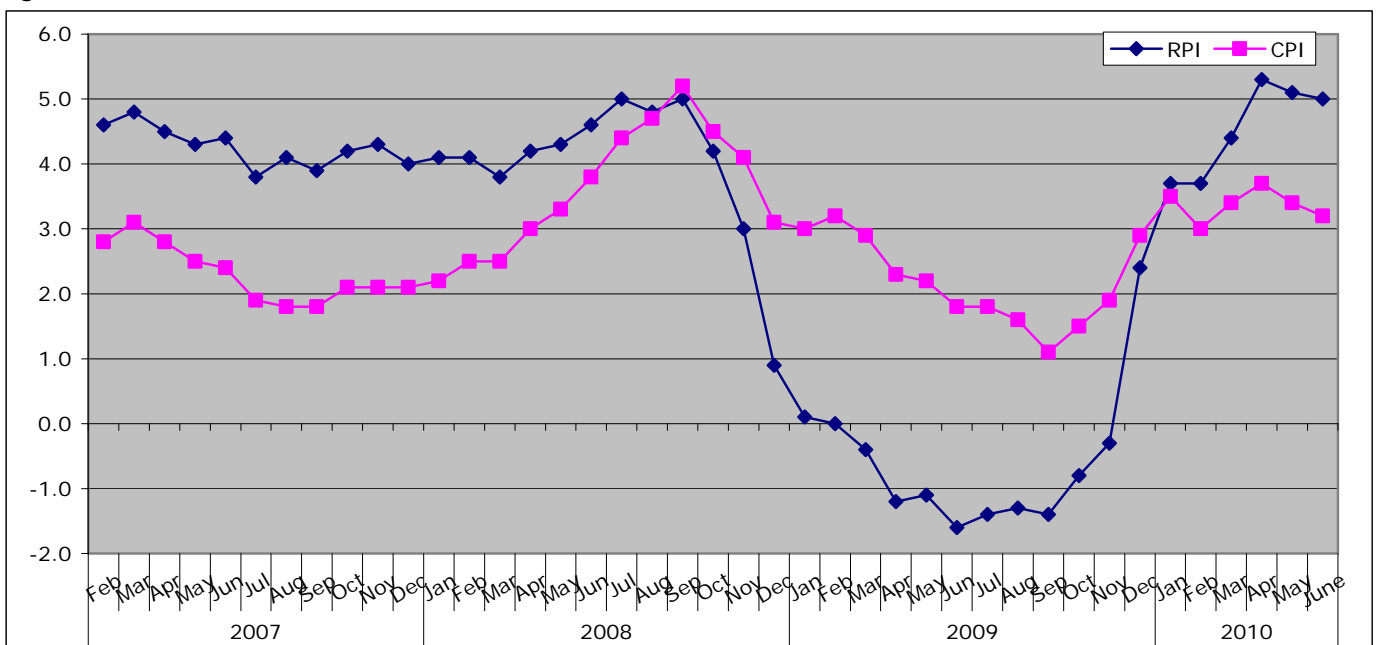
Figure: Change to GDP



Source: ONS

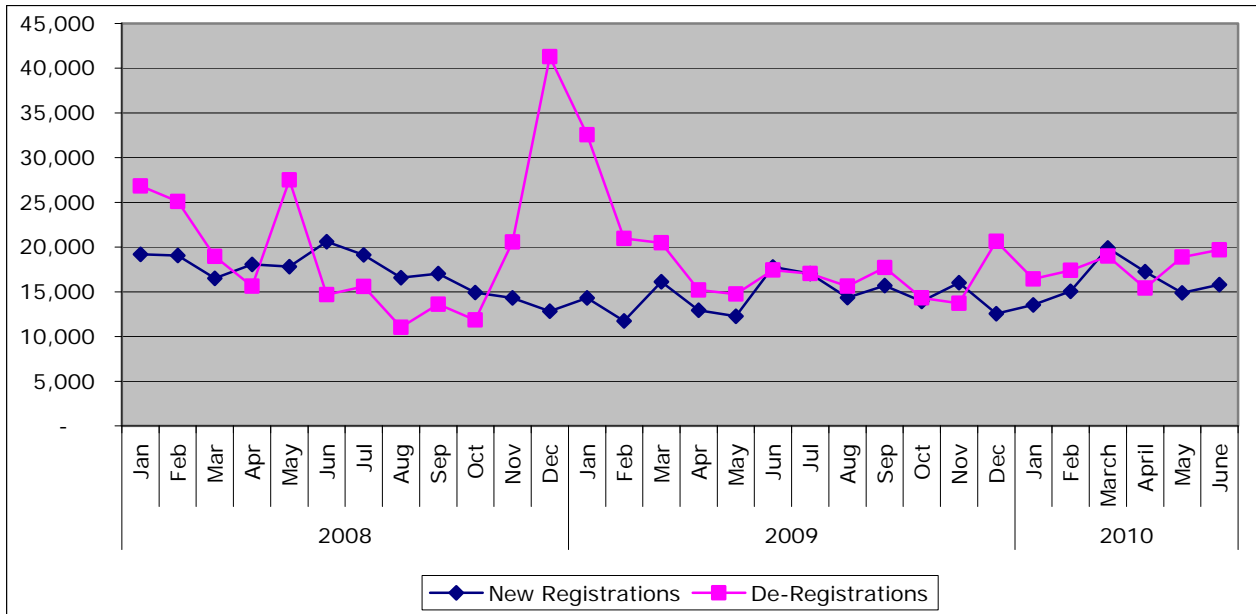
\* Data is provisional

Figure: Inflation Trends



Source: ONS

Figure 1: New Business Registrations and De-Registrations



Source: UK Trade Info

## Local Picture

### Labour Market

Confirmed Job losses - April 2010

Company	Location	No. jobs	Type of Service
Skipton Building Society	Scarborough	-136	Financial Services
<b>Total</b>		<b>-136</b>	

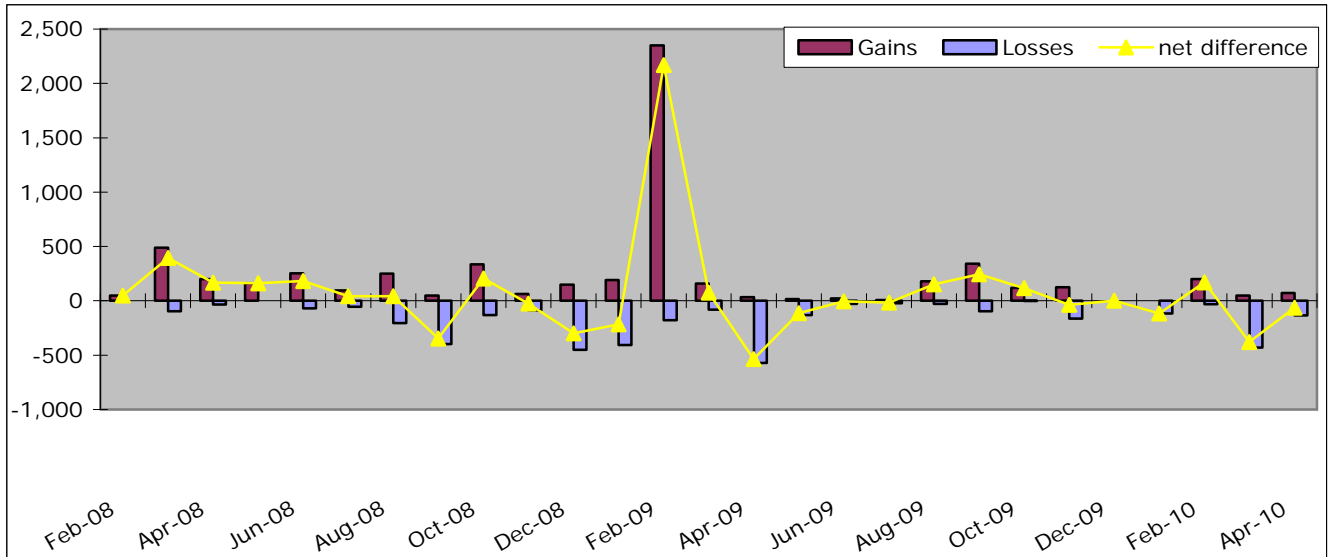
Confirmed Job Gains - April 2010

Company	Location	No. Jobs	Type of Service
Nespresso (Nestle)	York	73	Manufacturing Food, Drink and Tobacco
<b>Total</b>		<b>73</b>	

Source: Yorkshire Futures Monthly jobs database

**N.B. An updated jobs database is currently unavailable. Updated information will be provided when available.**

### Job Gains, Losses and net difference



Source: Yorkshire Forward jobs database

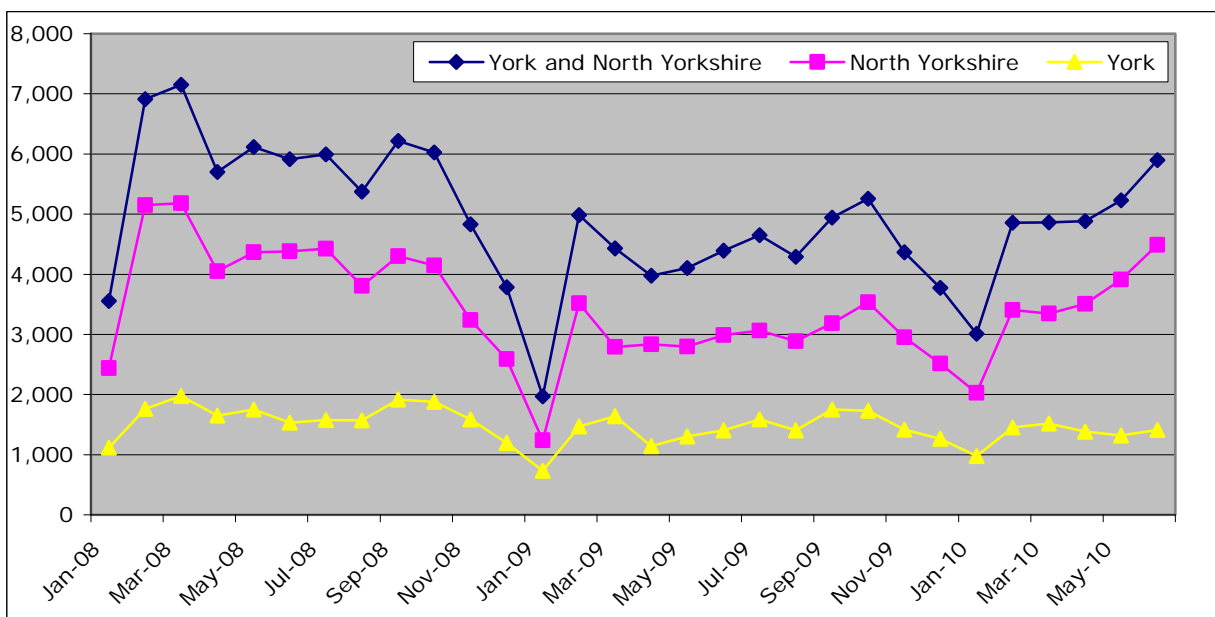
### Job Vacancies

#### Number of notified job vacancies

	June 2010	Monthly Change		Annual Change	
England	315,030	23,423	8.0%	80,156	34.1%
Yorkshire and Humber	34,610	5,443	18.7%	9,400	37.3%
York and North Yorkshire	5,897	668	12.8%	1,504	34.2%
North Yorkshire	4,486	576	14.7%	1,496	50.0%
York	1,411	93	7.1%	8	0.6%
Craven	352	136	63.0%	-19	-5.1%
Hambleton	692	159	29.8%	250	56.6%
Harrogate	1,351	43	3.3%	428	46.4%
Richmondshire	444	-14	-3.1%	262	144.0%
Ryedale	251	-8	-3.1%	95	60.9%
Scarborough	816	256	45.7%	337	70.4%
Selby	580	4	0.7%	142	32.4%

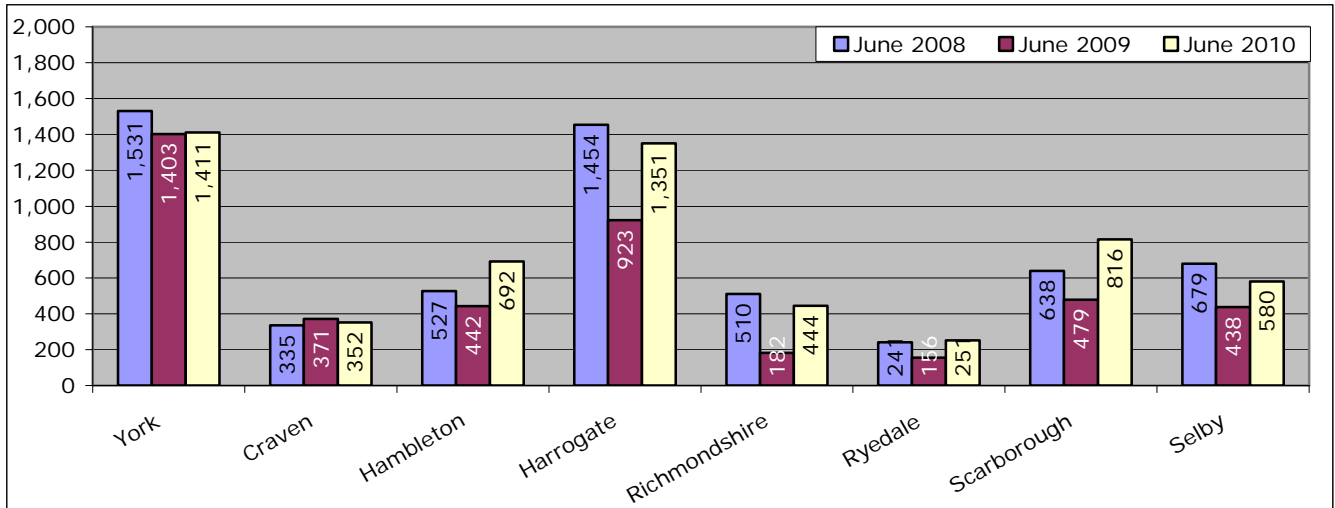
Source: Job Centre Plus, via Nomis

#### Number of vacancies trend



Source: Job Centre Plus, via Nomis

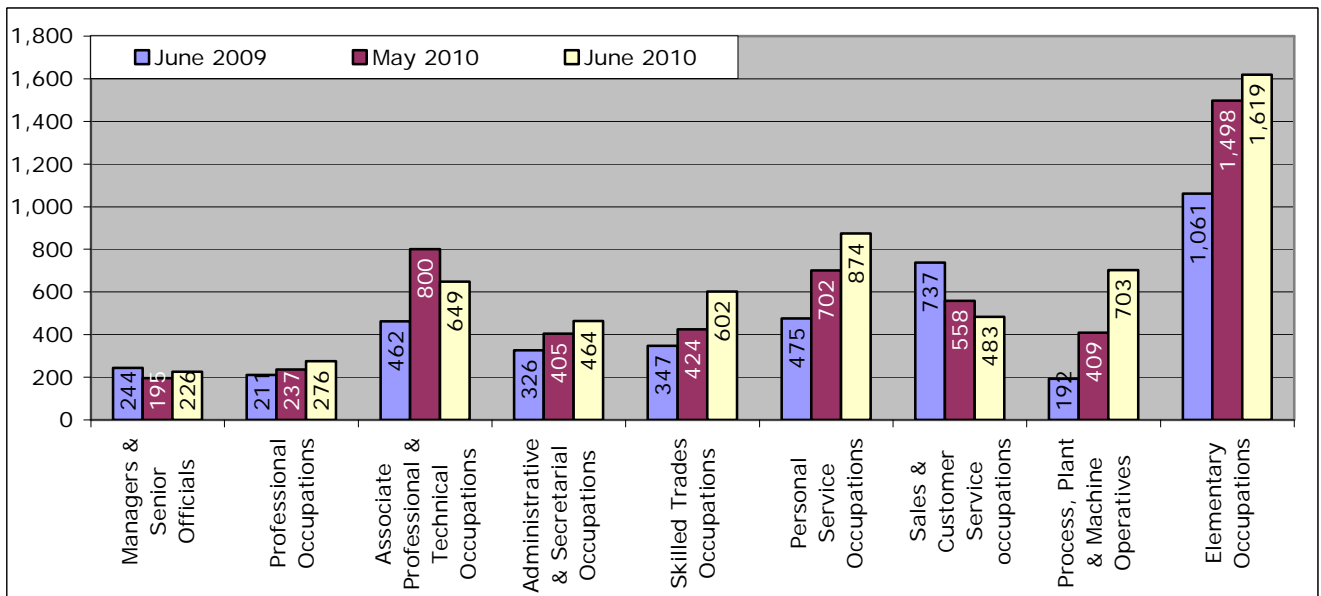
## Number of Vacancies, Year on Year comparison



Source: Job Centre Plus, via Nomis

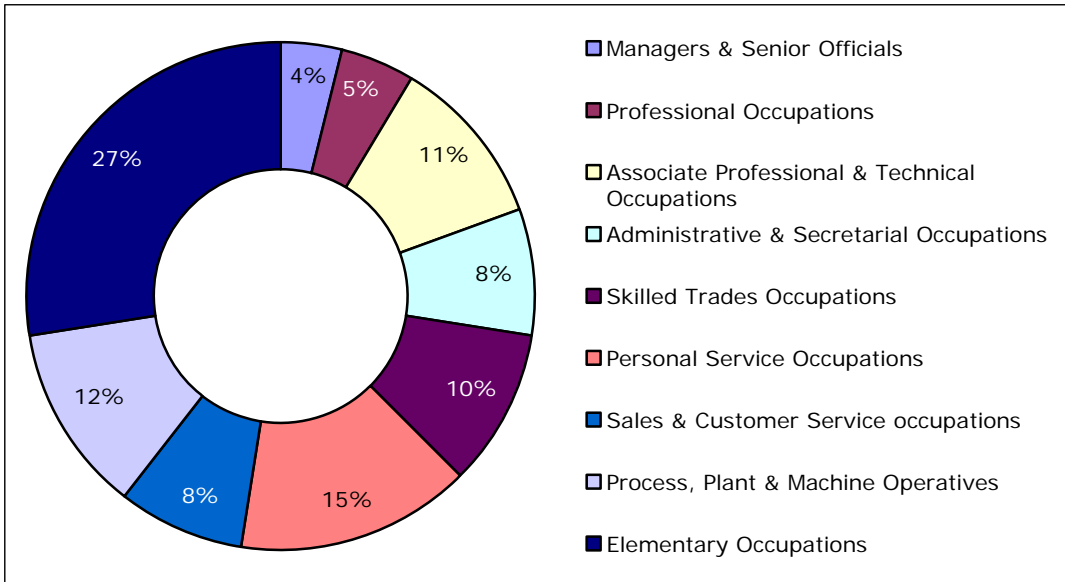
## Vacancies by Occupation

### Notified Vacancies by Occupation, York and North Yorkshire



Source: Job Centre Plus, via Nomis

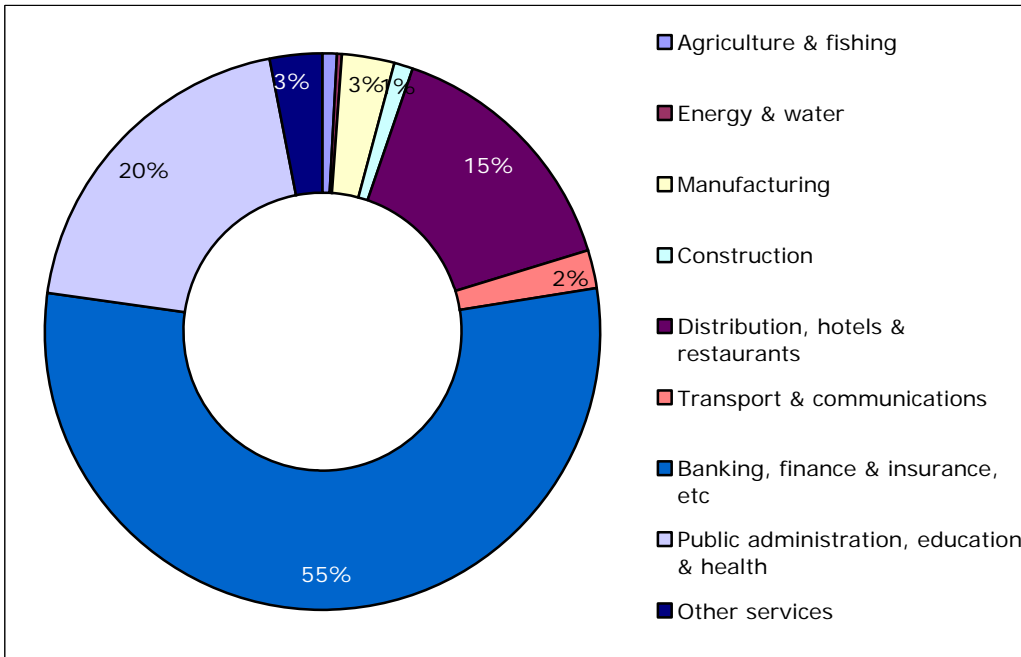
## Notified vacancies by occupation, York and North Yorkshire, June 2010



Source: Job Centre Plus, via Nomis

## Vacancies by Industry

Number of notified vacancies by broad industrial sector, York and North Yorkshire, June 2010



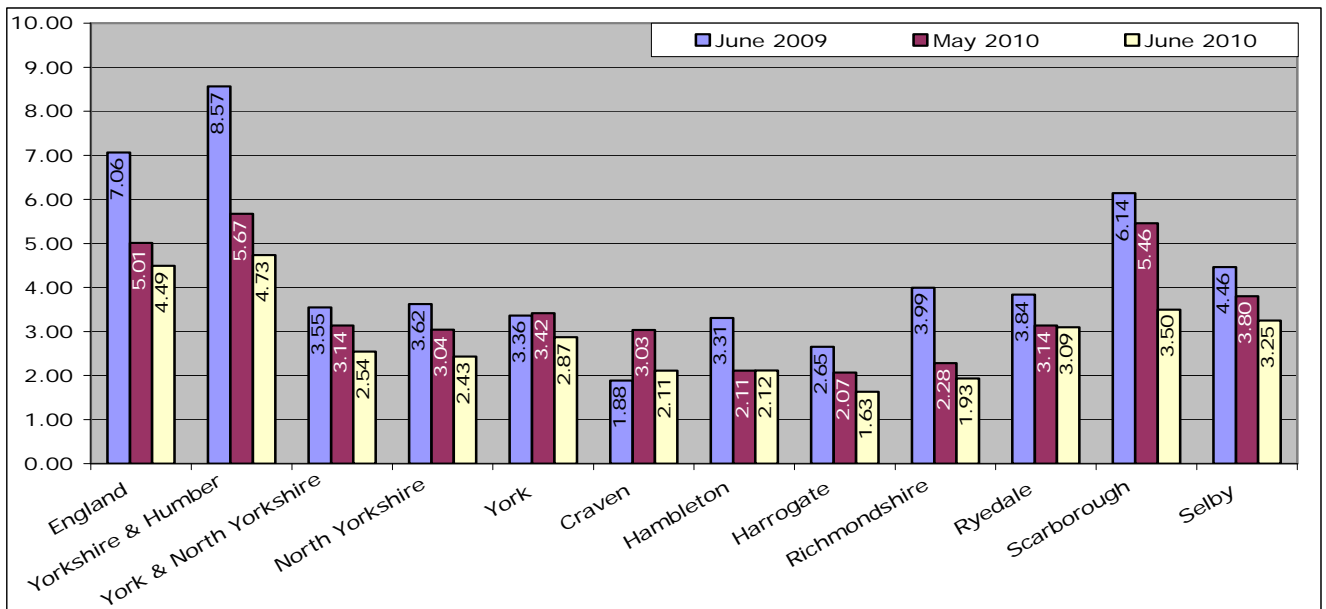
Source: Job Centre Plus, via Nomis

Number of JSA Claimants to Notified Vacancies ratio

	June 2009	May 2010	June 2010	Monthly Change	Annual Change
England	7.06	5.01	4.49	-0.51	-2.57
Yorkshire and Humber	8.57	5.67	4.73	-0.94	-3.83
York and North Yorkshire	3.55	3.14	2.54	-0.60	-1.00
North Yorkshire	3.62	3.04	2.43	-0.61	-1.19
York	3.36	3.42	2.87	-0.55	-0.49
Craven	1.88	3.03	2.11	-0.93	0.22
Hambleton	3.31	2.11	2.12	0.00	-1.19
Harrogate	2.65	2.07	1.63	-0.44	-1.02
Richmondshire	3.99	2.28	1.93	-0.34	-2.06
Ryedale	3.84	3.14	3.09	-0.05	-0.74
Scarborough	6.14	5.46	3.50	-1.96	-2.64
Selby	4.46	3.80	3.25	-0.56	-1.22

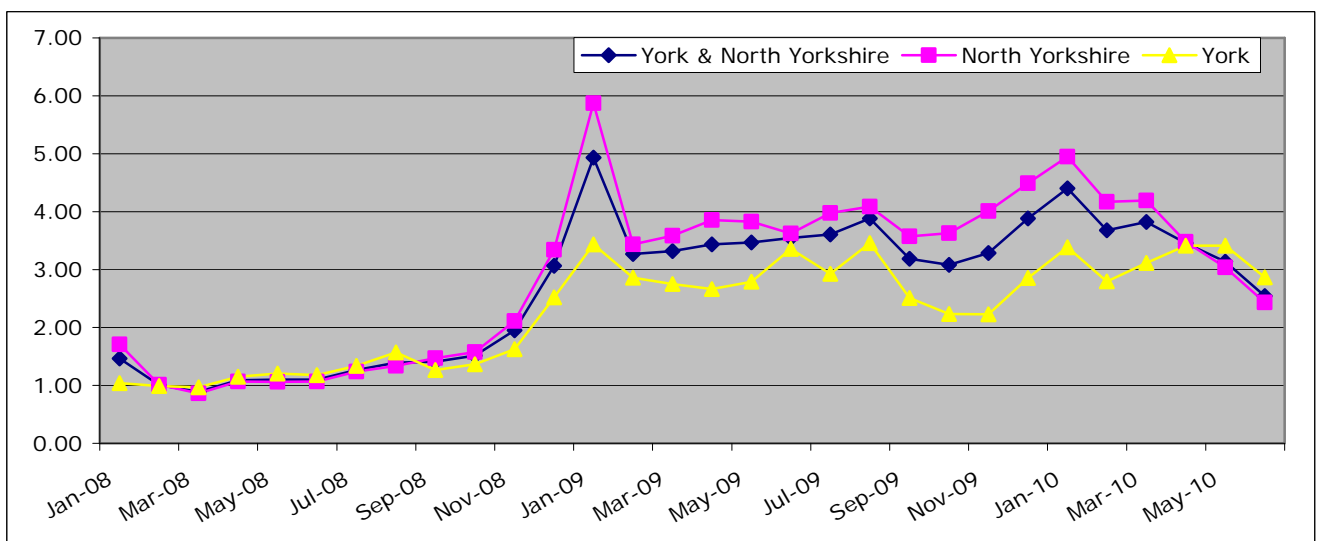
Source: Nomis

Number of Claimants to Notified Vacancies, Year on Year comparison



Source: Nomis

Number of Claimants to Notified Vacancies ratio trend



Source: Nomis

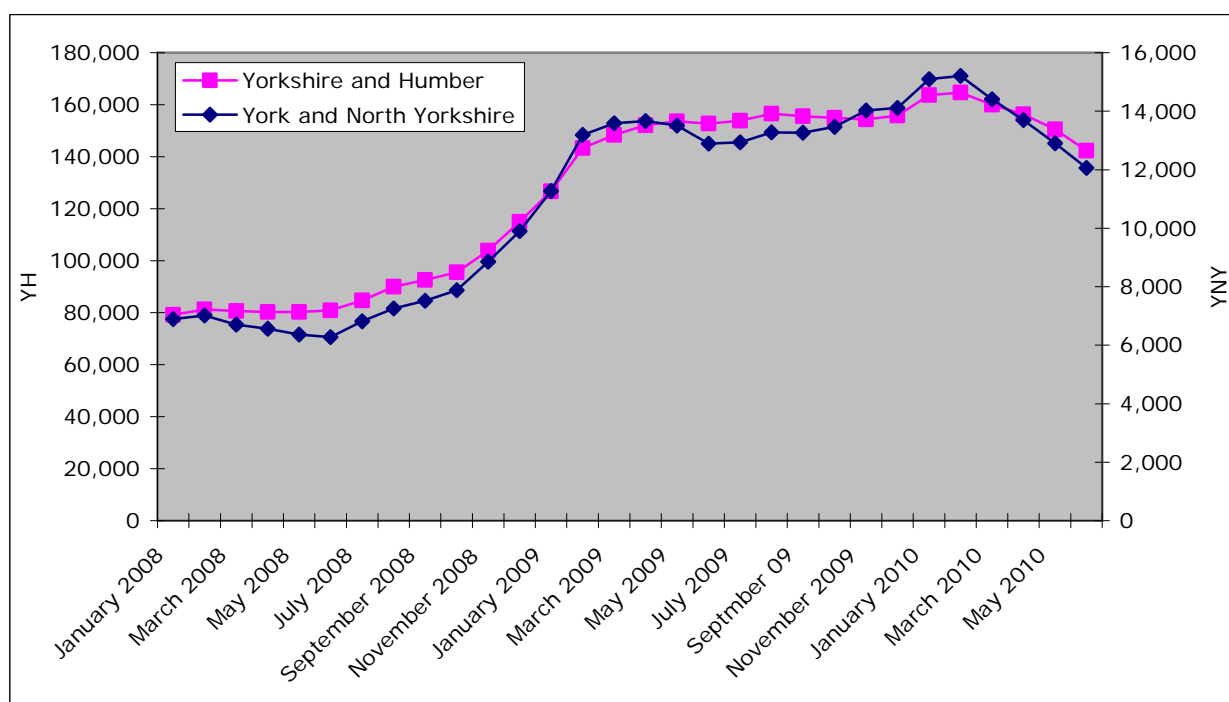
## Unemployment

### Total Number JSA Claimants (Claimant Count)

	June 2010	Monthly Change	Monthly % Change	Annual Change	Annual % Change
England	1,186,346	-52,582	-4.2	-112,226	-8.6
Yorkshire and Humber	142,390	-8,141	-5.4	-10,356	-6.8
York and North Yorkshire	12,064	-842	-6.5	-834	-6.5
North Yorkshire	8,600	-568	-6.2	-644	-7.0
York	3,464	-274	-7.3	-190	-5.2
Craven	651	-16	-2.4	7	1.1
Hambleton	990	-80	-7.5	-111	-10.1
Harrogate	1,821	-91	-4.8	-203	-10.0
Richmondshire	505	-42	-7.7	-90	-15.1
Ryedale	600	-56	-8.5	-79	-11.6
Scarborough	2,546	-177	-6.5	10	0.4
Selby	1,487	-106	-6.7	-178	-10.7

Source: Nomis

### Total Number of Claimants



Source: Nomis

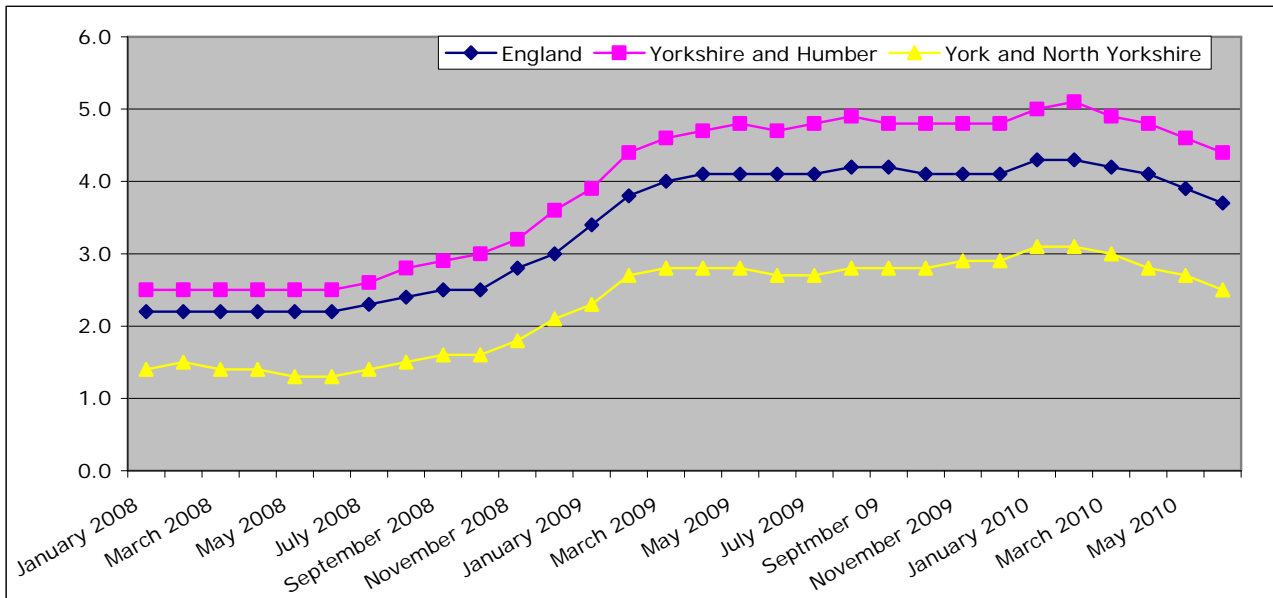
### Claimant Count Rate

	June 2010	Monthly Change	Annual Change
England	3.7	-0.2	-0.4
Yorkshire and Humber	4.4	-0.2	-0.3
York and North Yorkshire	2.5	-0.2	-0.2
North Yorkshire	2.4	-0.2	-0.2
York	2.7	-0.2	-0.2
Craven	2.0	-0.1	0.0
Hambleton	1.9	-0.2	-0.2
Harrogate	1.9	-0.1	-0.2
Richmondshire	1.6	-0.1	-0.2
Ryedale	1.9	-0.2	-0.3
Scarborough	4.1	-0.3	0.0
Selby	2.9	-0.2	-0.4

Source: Nomis

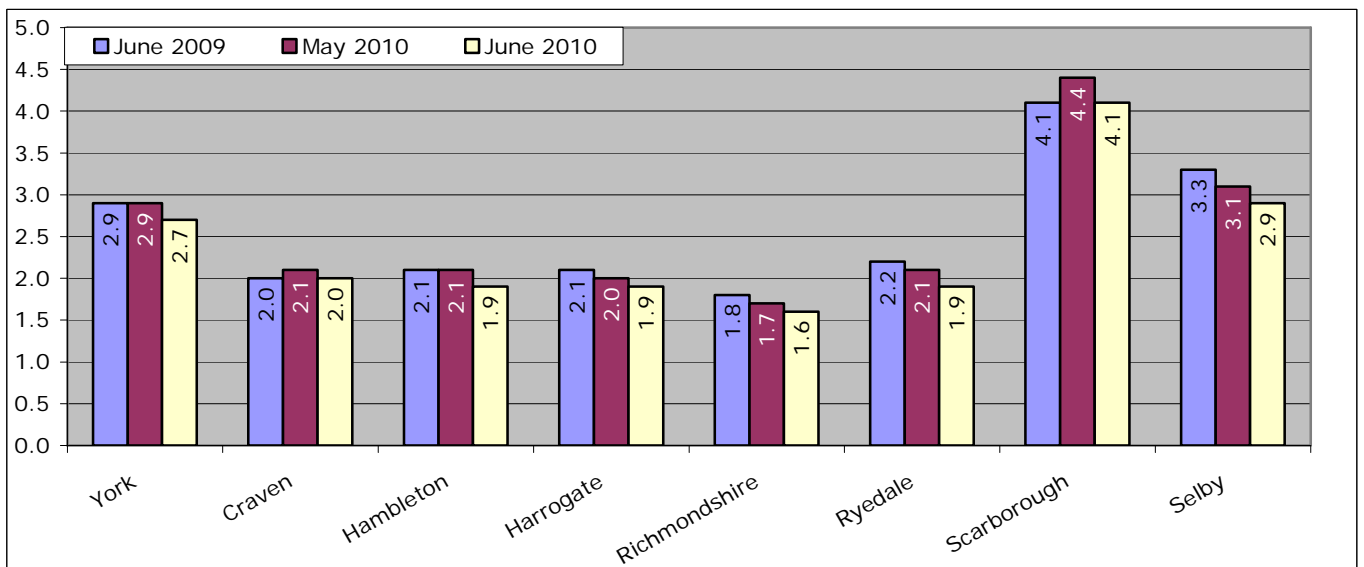
Change is percentage point

### Claimant Count Rate



Source: Nomis

### Claimant Count Rate



Source: Nomis

## Claimant Flows

### Claimant Count On-Flow

	June 2010	Monthly Change	Monthly % change	Annual Change	Annual % change
England	232,186	-1,929	-0.8	-41,906	-15.3
Yorkshire and Humber	27,027	-70	-0.3	-4,549	-14.4
York and North Yorkshire	2,638	-57	-2.1	-365	-12.2
North Yorkshire	1,895	-10	-0.5	-203	-9.7
York	743	-47	-5.9	-162	-17.9
Craven	132	-10	-7.0	-27	-17.0
Hambleton	248	17	7.4	3	1.2
Harrogate	459	6	1.3	-7	-1.5
Richmondshire	132	-3	-2.2	-32	-19.5
Ryedale	128	7	5.8	-26	-16.9
Scarborough	489	-2	-0.4	-68	-12.2
Selby	307	-25	-7.5	-47	-13.3

Source: Nomis

### Claimant Count Off-Flow

	June 2010	Monthly Change	Monthly % change	Annual Change	Annual % change
England	286,351	6,815	2.4	-41	0.0
Yorkshire and Humber	35,433	3,794	12.0	3,423	10.7
York and North Yorkshire	3,494	118	3.5	-136	-3.7
North Yorkshire	2,467	75	3.1	-184	-6.9
York	1,027	43	4.4	48	4.9
Craven	147	-21	-12.5	-37	-20.1
Hambleton	328	57	21.0	11	3.5
Harrogate	537	10	1.9	-73	-12.0
Richmondshire	170	0	0.0	-15	-8.1
Ryedale	180	-9	-4.8	-16	-8.2
Scarborough	683	16	2.4	-11	-1.6
Selby	421	21	5.3	-43	-9.3

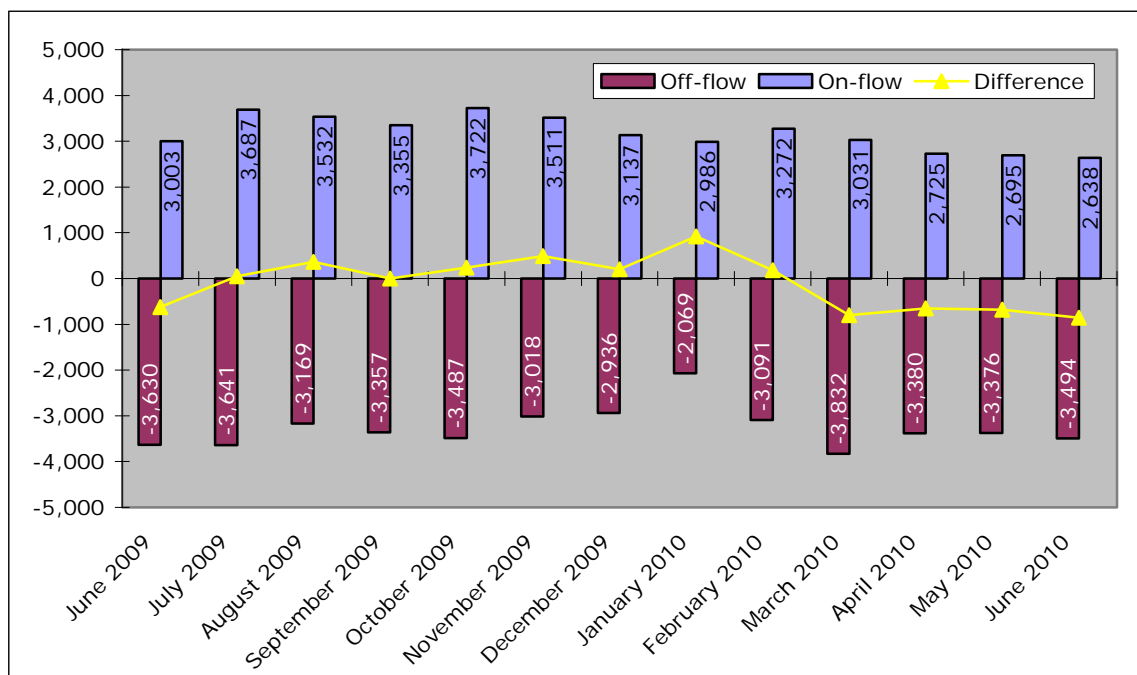
Source: Nomis

### Claimant Count On-Flow and Off-Flow, York and North Yorkshire, June 2010

	On-flow	Off-flow	Difference
June 2009	3,003	-3,630	-627
July 2009	3,687	-3,641	46
August 2009	3,532	-3,169	363
September 2009	3,355	-3,357	-2
October 2009	3,722	-3,487	235
November 2009	3,511	-3,018	493
December 2009	3,137	-2,936	201
January 2010	2,986	-2,069	917
February 2010	3,272	-3,091	181
March 2010	3,031	-3,832	-801
April 2010	2,725	-3,380	-655
May 2010	2,695	-3,376	-681
June 2010	2,638	-3,494	-856

Source: Nomis

### Claimant Count On flow and Off Flow, York and North Yorkshire, June 2010



Source: Nomis

### Ratio of Claimant Count Off-flow to On-flow

	June 2009	May 2010	June 2010	Monthly Change	Annual Change
England	0.96	0.84	0.81	-0.03	-0.15
Yorkshire and Humber	0.99	0.86	0.76	-0.09	-0.22
York and North Yorkshire	0.83	0.80	0.76	-0.04	-0.07
North Yorkshire	0.79	0.80	0.77	-0.03	-0.02
York	0.92	0.80	0.72	-0.08	-0.20
Craven	0.86	0.85	0.90	0.05	0.03
Hambleton	0.77	0.85	0.76	-0.10	-0.02
Harrogate	0.76	0.86	0.85	0.00	0.09
Richmondshire	0.89	0.79	0.78	-0.02	-0.11
Ryedale	0.79	0.64	0.71	0.07	-0.07
Scarborough	0.80	0.74	0.72	-0.02	-0.09
Selby	0.76	0.83	0.73	-0.10	-0.03

Source: Nomis

## Claimants by Duration

Total claiming for over 6 months

	June 2010	Monthly Change	Monthly % Change	Annual Change	Annual % Change
England	471,590	-16,345	-3.3	94,765	25.1
Yorkshire and Humber	57,870	-2,340	-3.9	12,205	26.7
York and North Yorkshire	4,715	-240	-4.8	1,400	42.2
North Yorkshire	3,420	-170	-4.7	990	40.7
York	1,290	-80	-5.8	400	44.9
Craven	255	5	2.0	115	82.1
Hambleton	330	-40	-10.8	55	20.0
Harrogate	675	-60	-8.2	205	43.6
Richmondshire	150	-5	-3.2	15	11.1
Ryedale	260	-15	-5.5	60	30.0
Scarborough	1,155	-30	-2.5	395	52.0
Selby	595	-25	-4.0	155	35.2

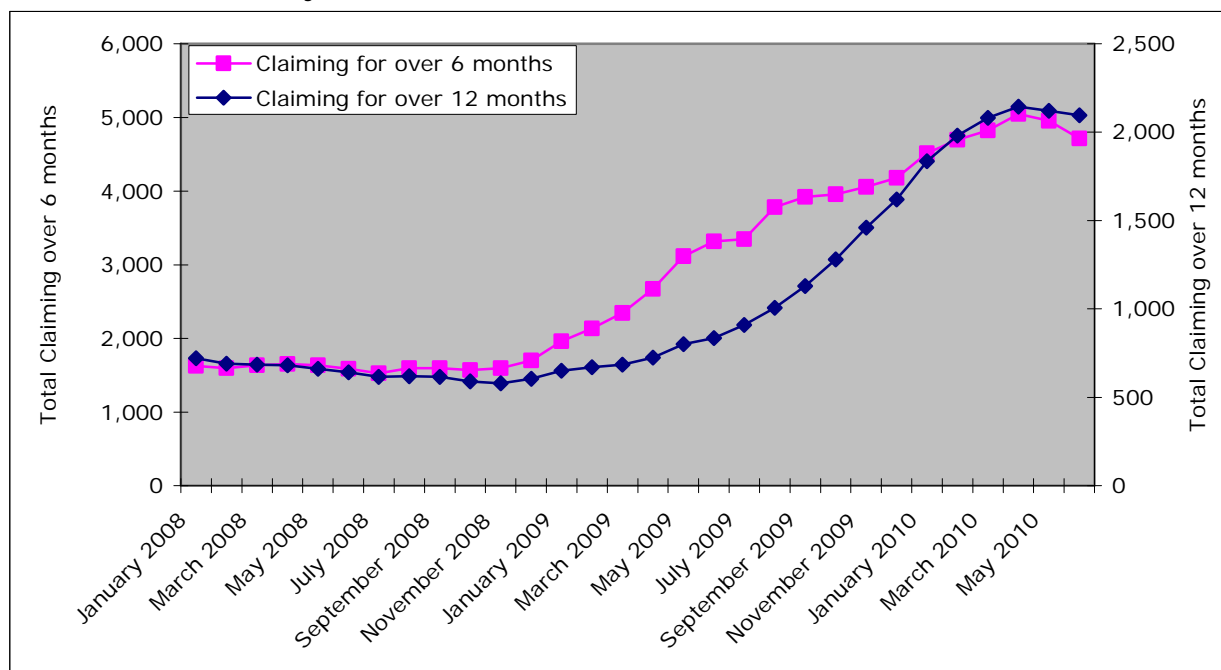
Source: Nomis

Total Claiming for Over 12 months

	June 2010	Monthly Change	Monthly % Change	Annual Change	Annual % Change
England	216,225	-1,735	-0.8	103,695	92.1
Yorkshire and Humber	25,920	-220	-0.8	13,215	104.0
York and North Yorkshire	2,095	-25	-1.2	1,260	150.9
North Yorkshire	1,505	-30	-2.0	885	142.7
York	590	0	0.0	375	174.4
Craven	100	5	5.3	60	150.0
Hambleton	150	-10	-6.3	90	150.0
Harrogate	305	-10	-3.2	165	117.9
Richmondshire	65	-5	-7.1	30	85.7
Ryedale	125	-5	-3.8	60	92.3
Scarborough	465	5	1.1	270	138.5
Selby	295	-10	-3.3	210	247.1

Source: Nomis

Number of claimants by duration, York and North Yorkshire



Source: Nomis

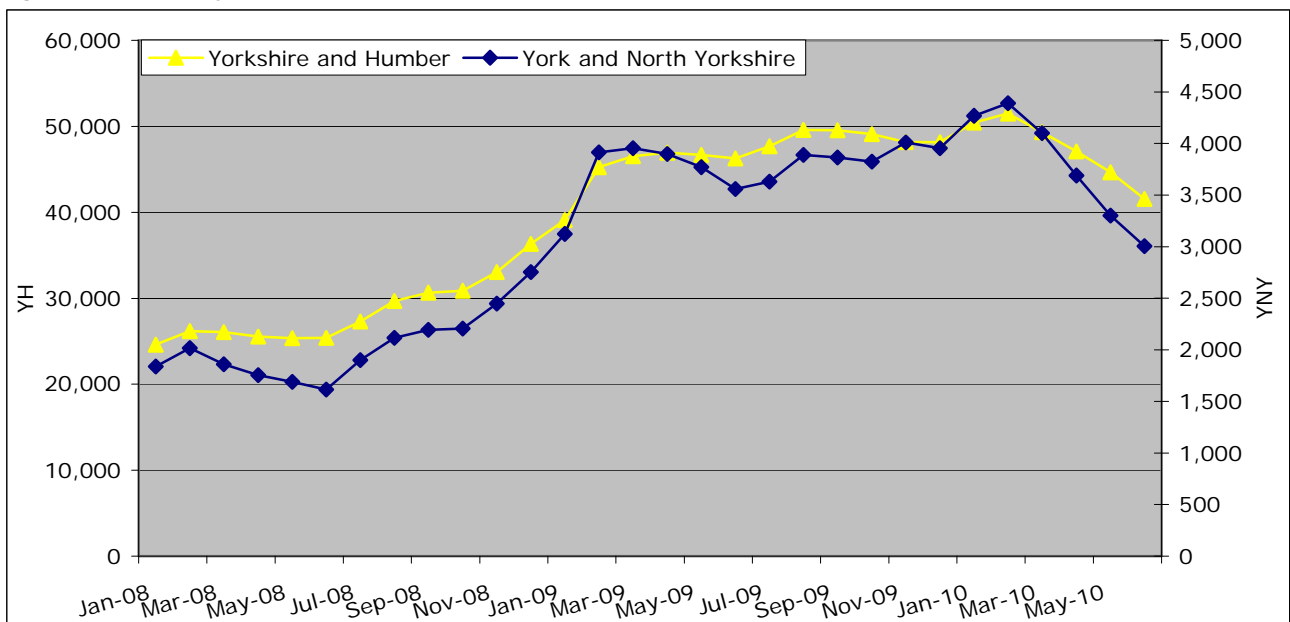
## Claimants by Age

Claimant Count 18-24 year olds

	June 2010	Monthly Change	Monthly % Change	Annual Change	Annual % Change
England	318,895	-19,580	-5.8	-49,895	-13.5
Yorkshire and Humber	41,550	-3,105	-7.0	-4,700	-10.2
York and North Yorkshire	3,005	-295	-8.9	-555	-15.6
North Yorkshire	2,120	-235	-10.0	-365	-14.7
York	880	-65	-6.9	-200	-18.5
Craven	180	5	2.9	25	16.1
Hambleton	235	-50	-17.5	-85	-26.6
Harrogate	385	-20	-4.9	-105	-21.4
Richmondshire	145	-20	-12.1	-40	-21.6
Ryedale	145	-25	-14.7	-40	-21.6
Scarborough	640	-90	-12.3	-40	-5.9
Selby	395	-35	-8.1	-70	-15.1

Source: Nomis

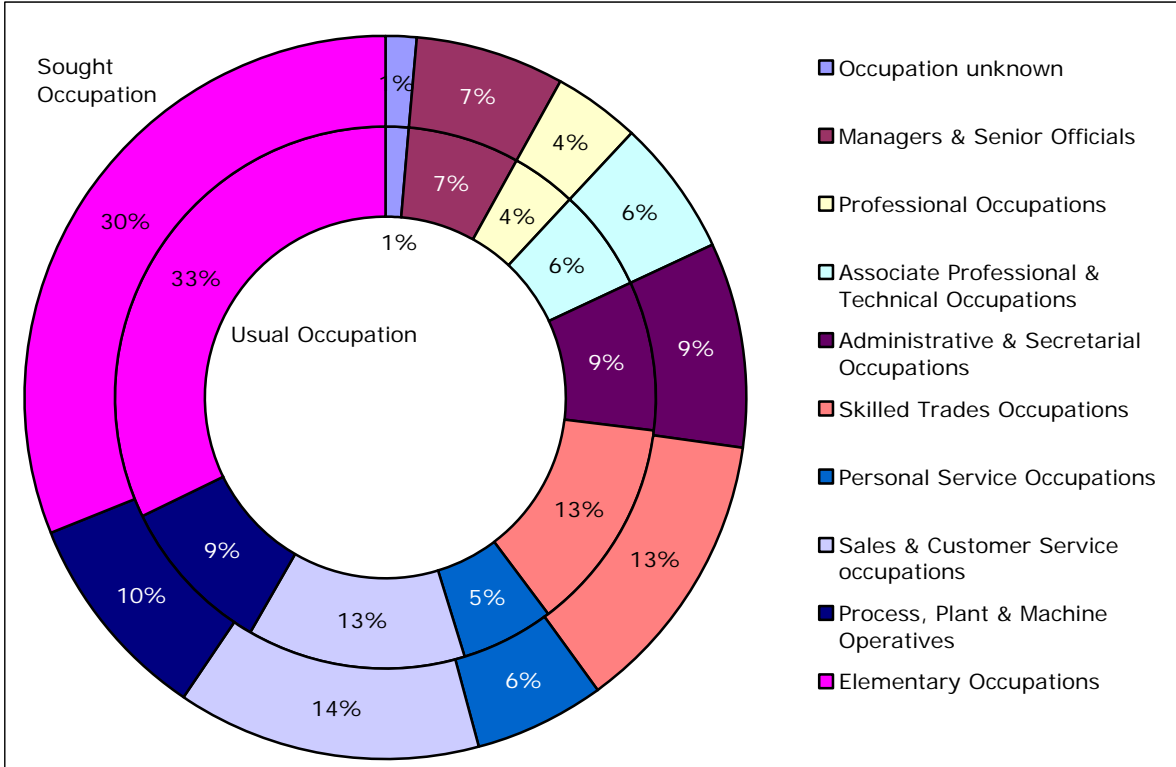
Figure: 18 – 24 yr old claimants



Source: Nomis

**Claimants by Occupation**

Claimants by Sought and Usual occupation, York and North Yorkshire, June 2010



Source: Nomis

## ILO Employment Rate

### Working Age Employment Rate in York and North Yorkshire

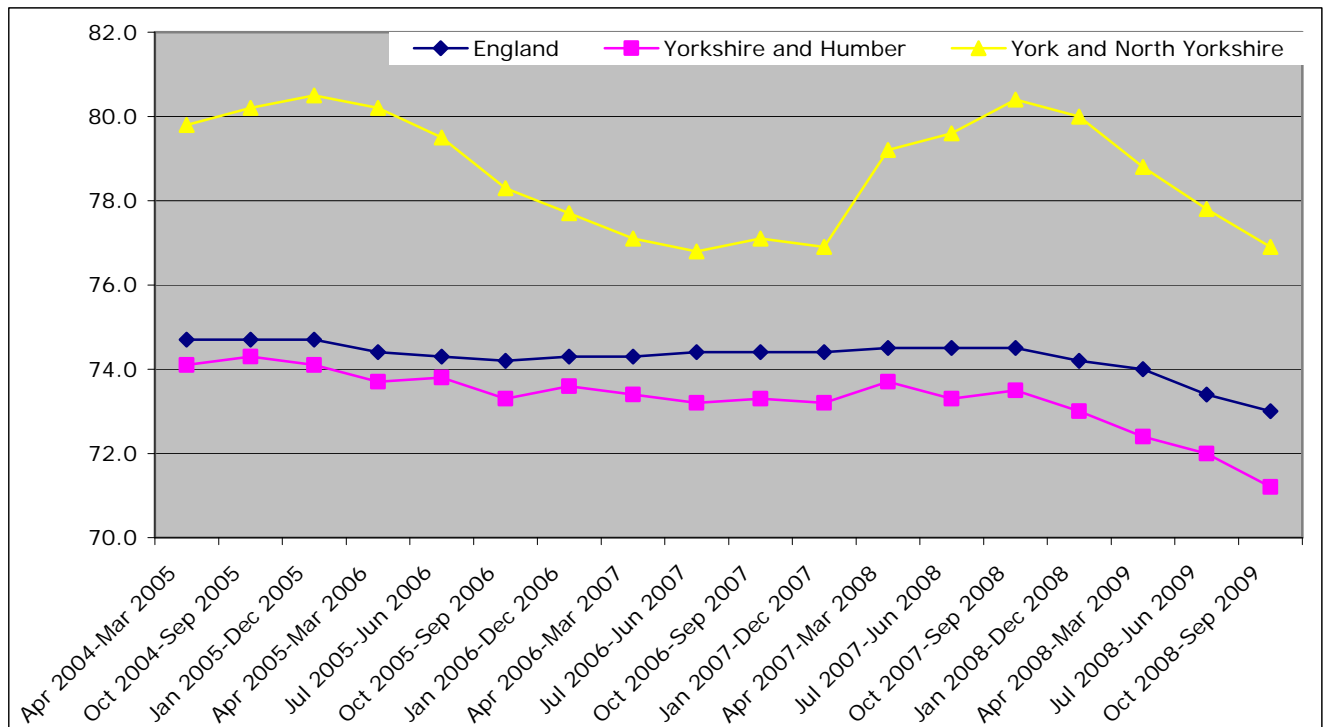
	Oct 2008 - Sep 2009	Change on previous quarter	Change on previous year
England	73.0	-0.4	-1.5
Yorkshire and Humber	71.2	-0.8	-2.3
York and North Yorkshire	76.9	-0.9	-3.5

Source: Annual Population Survey

Change is percentage point

**N.B. Confidence intervals at District level are unreliable**

### Working Age Employment Rate



Source: Annual Population Survey

## ILO Unemployment Rate

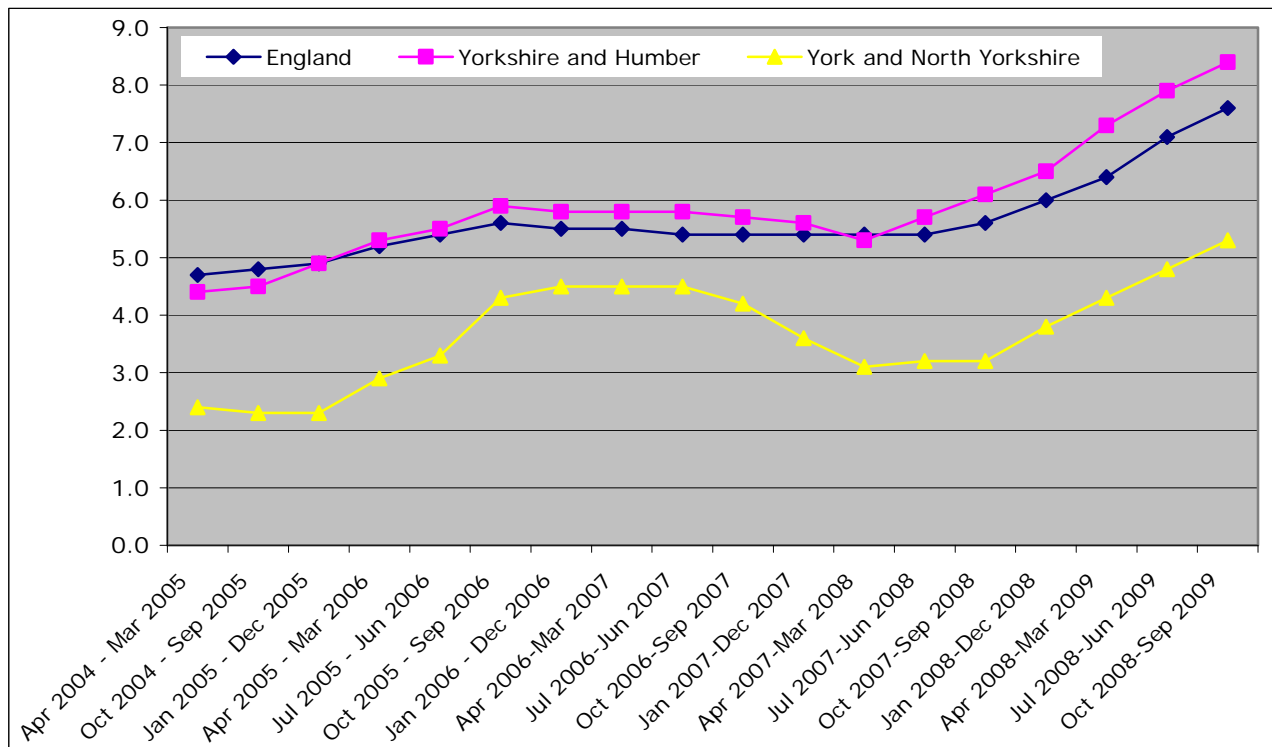
Working age unemployment rate

	Oct 2008 - Sep 2009	Change on previous quarter	Change on previous year
England	7.6	0.5	2.0
Yorkshire and Humber	8.4	0.5	2.3
York and North Yorkshire	5.3	0.5	2.1

Source: Annual Population Survey

**N.B. Data is either disclosive or confidence intervals are unreliable at District level.**

Working Age Unemployment Rate



Source: Annual Population Survey

## **Business Activity**

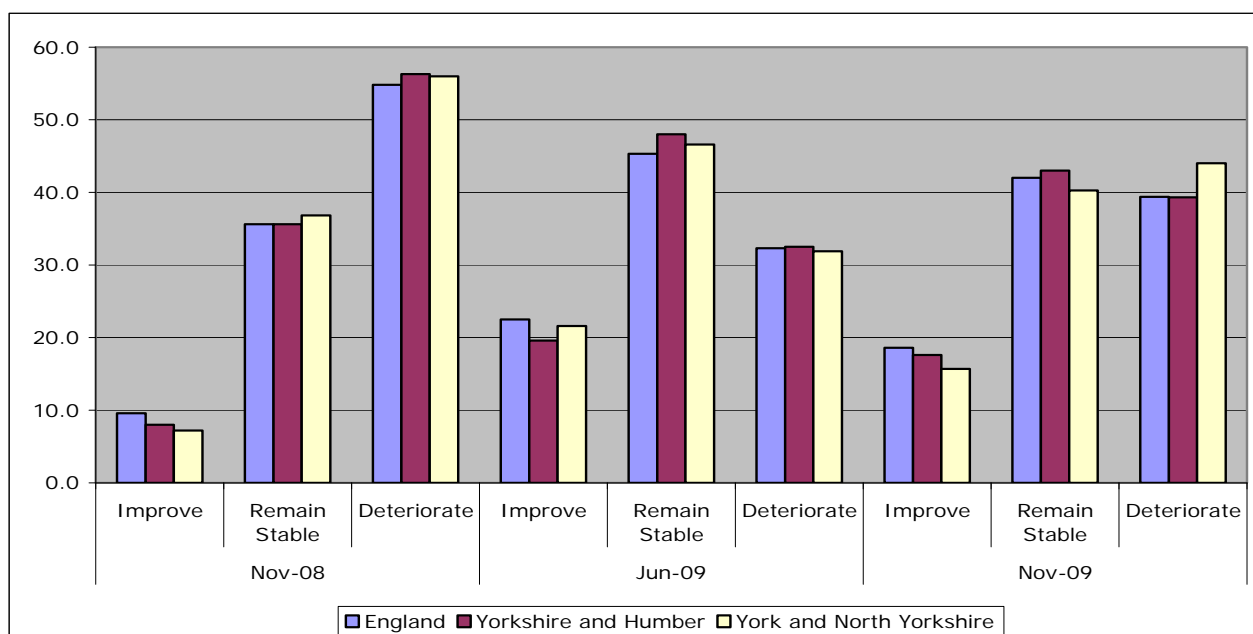
### **Business Confidence**

The National Business Survey is a large scale research project conducted by Ipsos Mori on behalf of the RDA Network and Invest Northern Ireland. It explores perceptions of businesses across England and Northern Ireland, on current and recent business conditions as well as looking forward to potential issues and views on projected change over the coming months. The survey asks a series of questions on business confidence, a number of which are presented here.

Over the next 12 months do you expect the business climate in which your business operates to generally improve, remain stable, or deteriorate?

	Nov-08			Jun-09			Nov-09		
	Improve	Remain Stable	Deteriorate	Improve	Remain Stable	Deteriorate	Improve	Remain Stable	Deteriorate
England	9.6	35.6	54.8	22.5	45.3	32.3	18.6%	42.0%	39.4%
Yorkshire and Humber	8.0	35.6	56.3	19.6	48.0	32.5	17.6%	43.0%	39.3%
York and North Yorkshire	7.2	36.8	56.0	21.6	46.6	31.9	15.7%	40.3%	44.0%

Source: 'National Business Survey, November 2009, (Ipsos Mori on behalf of England's Regional Development Agencies and Invest Northern Ireland)'

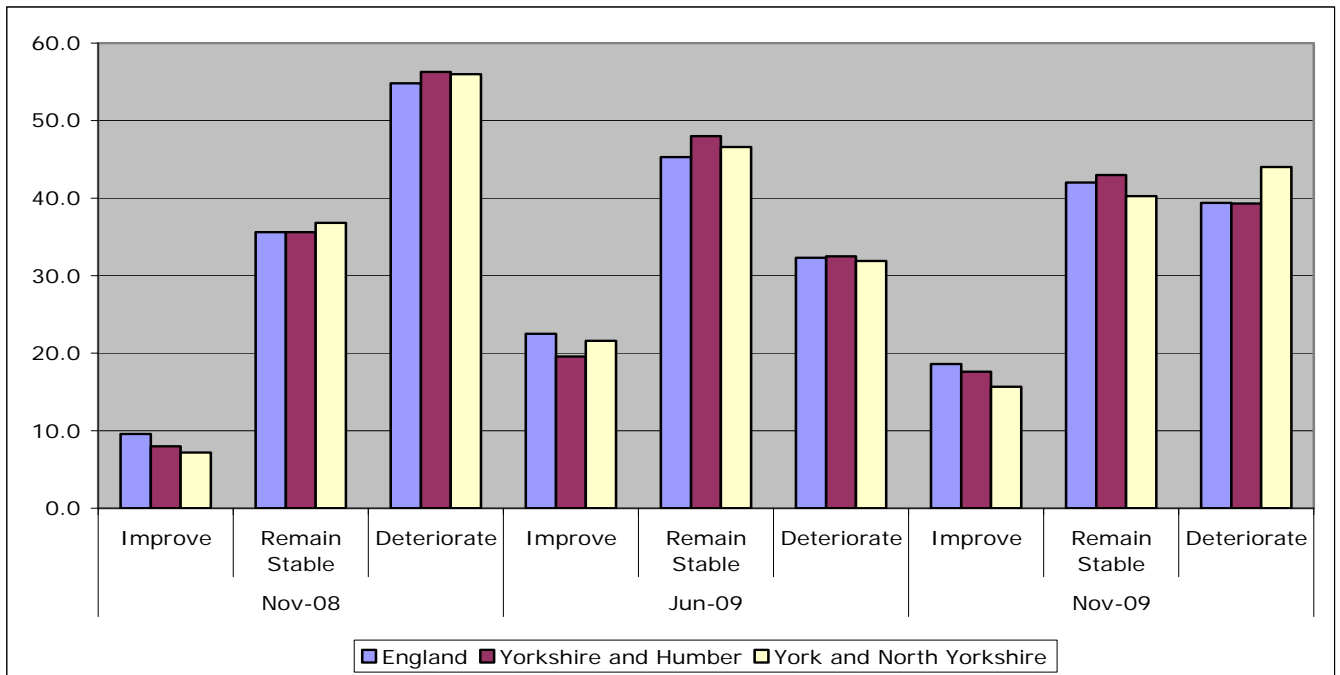


Source: 'National Business Survey, November 2009, (Ipsos Mori on behalf of England's Regional Development Agencies and Invest Northern Ireland)'

What has been the trend in the last 12 months with regard to numbers employed?

	Nov-08				Jun-09				Nov-09			
	Higher	Same	Lower	n/a	Higher	Same	Lower	n/a	Higher	Same	Lower	n/a
England	11.9	49.1	22.3	16.7	9.0	46.4	32.2	12.4	12.6%	46.5%	25.6%	15.3%
Yorkshire and Humber	13.4	46.9	24.4	15.2	7.1	44.5	29.8	18.6	16.3%	50.7%	19.2%	13.8%
York and North Yorkshire	12.8	43.9	20.0	23.3	6.3	50.9	24.3	18.5	14.5%	48.6%	22.4%	14.6%

Source: 'National Business Survey, June 2009, (Ipsos Mori on behalf of England's Regional Development Agencies and Invest Northern Ireland)'



Source: 'National Business Survey, November 2009, (Ipsos Mori on behalf of England's Regional Development Agencies and Invest Northern Ireland)'

N.B. The National Business Survey data is a sample and subject to some survey error. Sample sizes are smaller at more local levels therefore the confidence intervals are higher. Sample size can vary over the different time periods.

## New Businesses

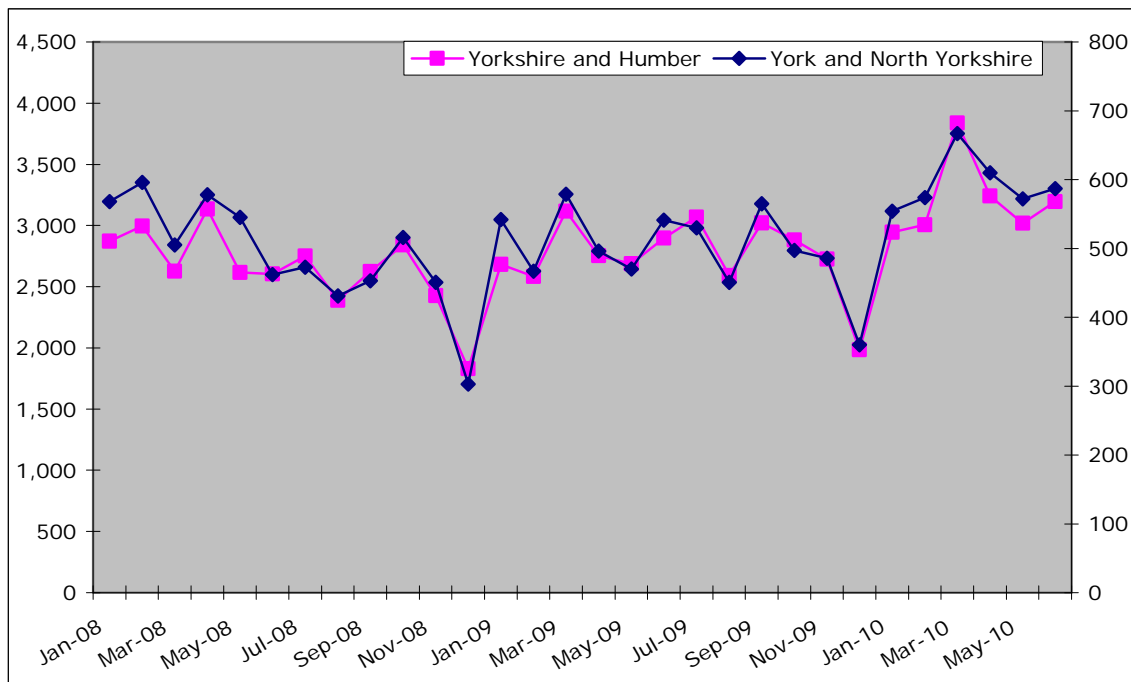
Information from the BankSearch Start up Interactive Database (IADB) provides a proxy to the number of new businesses being created in the sub region. The database provides information from Barclays, Co-Operative Bank, HSBC, Lloyds Banking Group, Royal Bank of Scotland and Santander. A 'Start-up' reflects the opening of a first current account from a small business banking product range. They represent businesses new to banking or those previously operated through a personal account. The data exclude businesses operating through personal accounts, those without banking relationships or those banking with other institutions. A small business is defined as having, or expected to have, annual debit turnover (i.e. outward payments from their accounts) of up to £1m per annum.

Number of new bank accounts

	June 2010	Monthly Change	Annual Change		
England	40,534	2,429	6.4%	3,492	9.4%
Yorkshire and Humber	3,195	176	5.8%	298	10.3%
York and North Yorkshire	587	15	2.6%	46	8.5%
North Yorkshire	447	-10	-2.2%	12	2.8%
York	140	25	21.7%	34	32.1%
Craven	40	-2	-4.8%	7	21.2%
Hambleton	61	2	3.4%	2	3.4%
Harrogate	150	17	12.8%	2	1.4%
Richmondshire	25	-18	-41.9%	-4	-13.8%
Ryedale	38	-3	-7.3%	11	40.7%
Scarborough	77	-4	-4.9%	12	18.5%
Selby	56	-2	-3.4%	-18	-24.3%

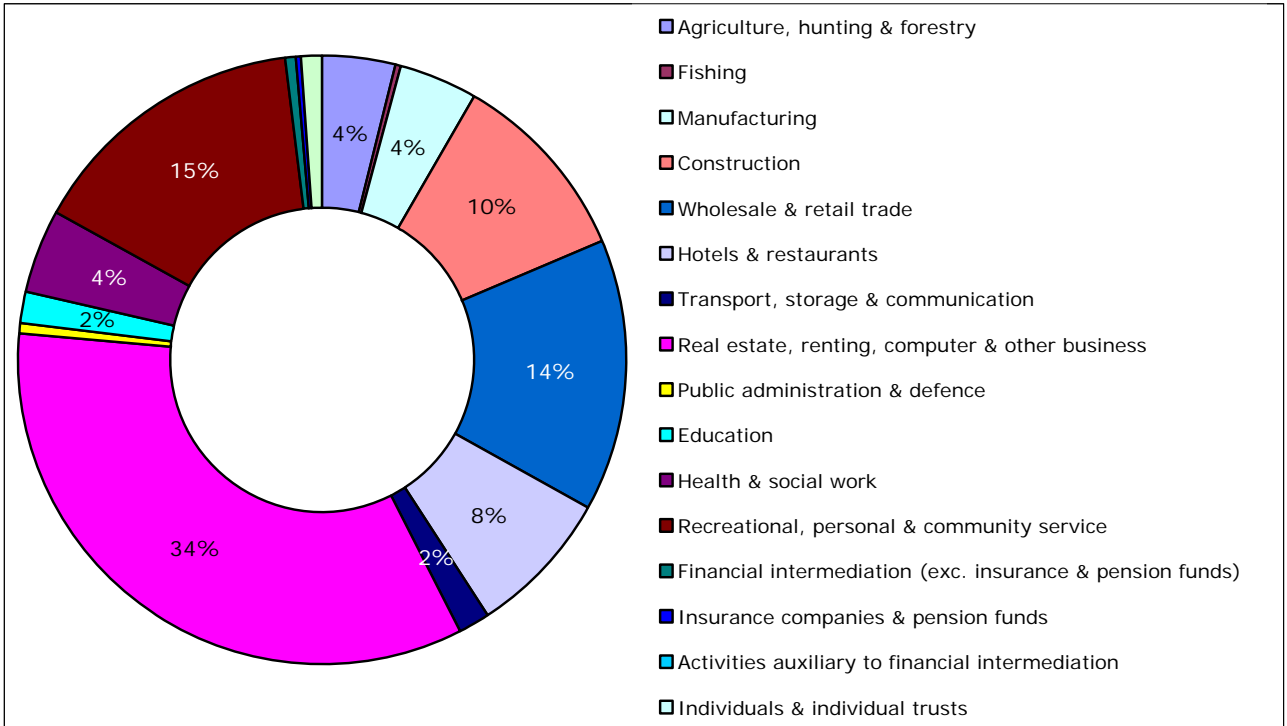
Source: BankSearch Ltd

Figure: Number of new bank accounts



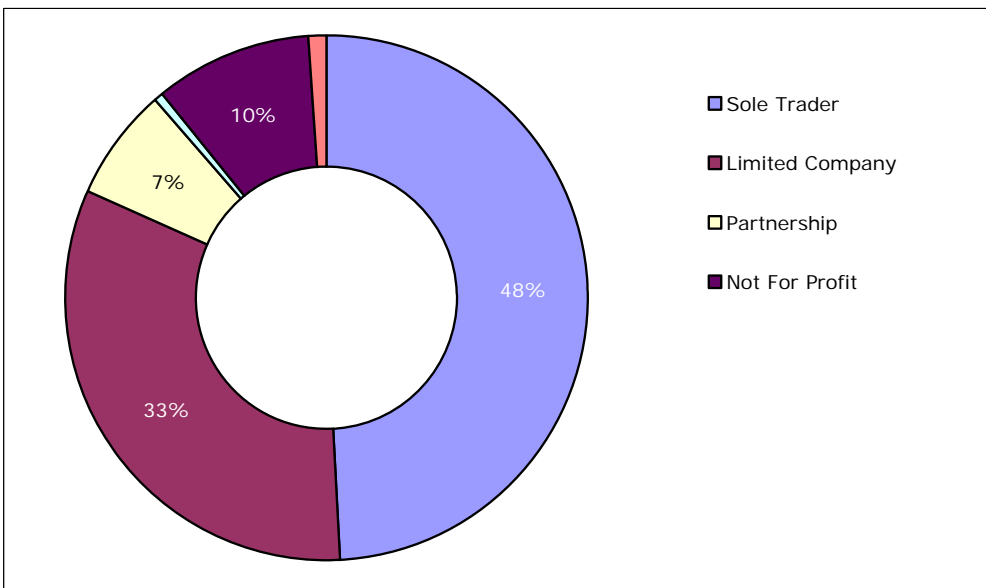
Source: BankSearch Ltd

### New bank accounts by industry



Source: BankSearch Ltd

### New bank accounts by legal status



Source: BankSearch Ltd

## Housing

### Land Registry House Price Index

#### Average Price

	April 2010	Monthly Change		Annual Change	
		No.	%	No.	%
England and Wales	166,072	134	0.1	9,672	8.4
Yorkshire and Humber	127,873	1151	0.9	6,872	5.7
North Yorkshire	177,737	-1,273	-0.7	10,827	6.5
York	183,307	1,311	0.7	15,619	9.3

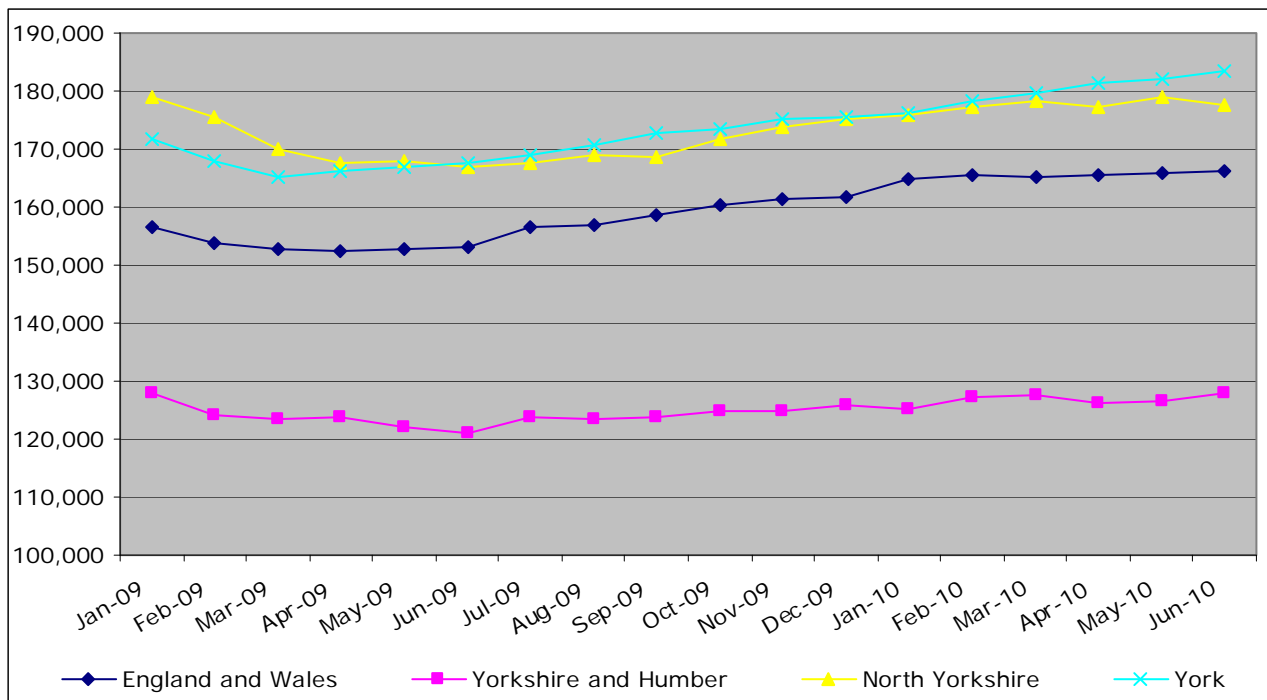
Source: Land Registry, House Price Index

#### Sales Volume

	April 2010	Monthly Change		Annual Change	
		No.	%	No.	%
England and Wales	49,323	-539	-1.1	10,043	25.6
Yorkshire and Humber	4,152	58	1.4	500	13.7
North Yorkshire	652	132	25.4	185	39.6
York	217	1	0.5	34	18.6

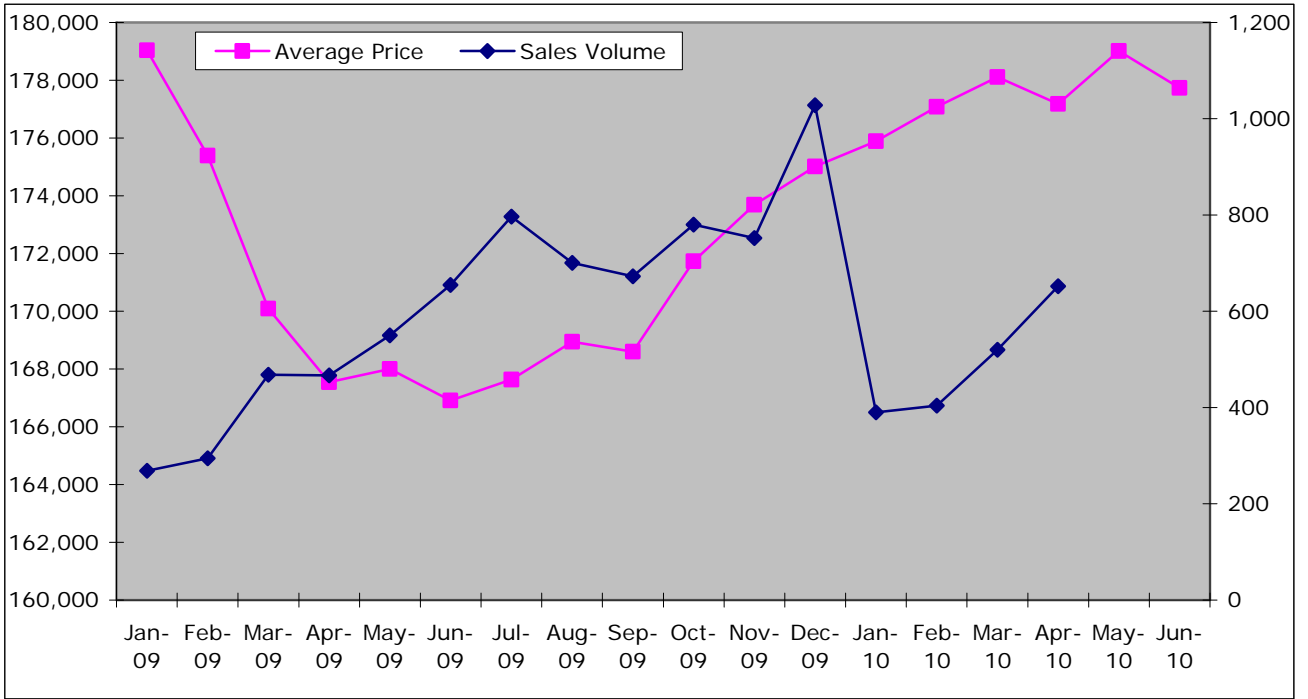
Source: Land Registry, House Price Index

Figure: Average Prices with national and regional comparison



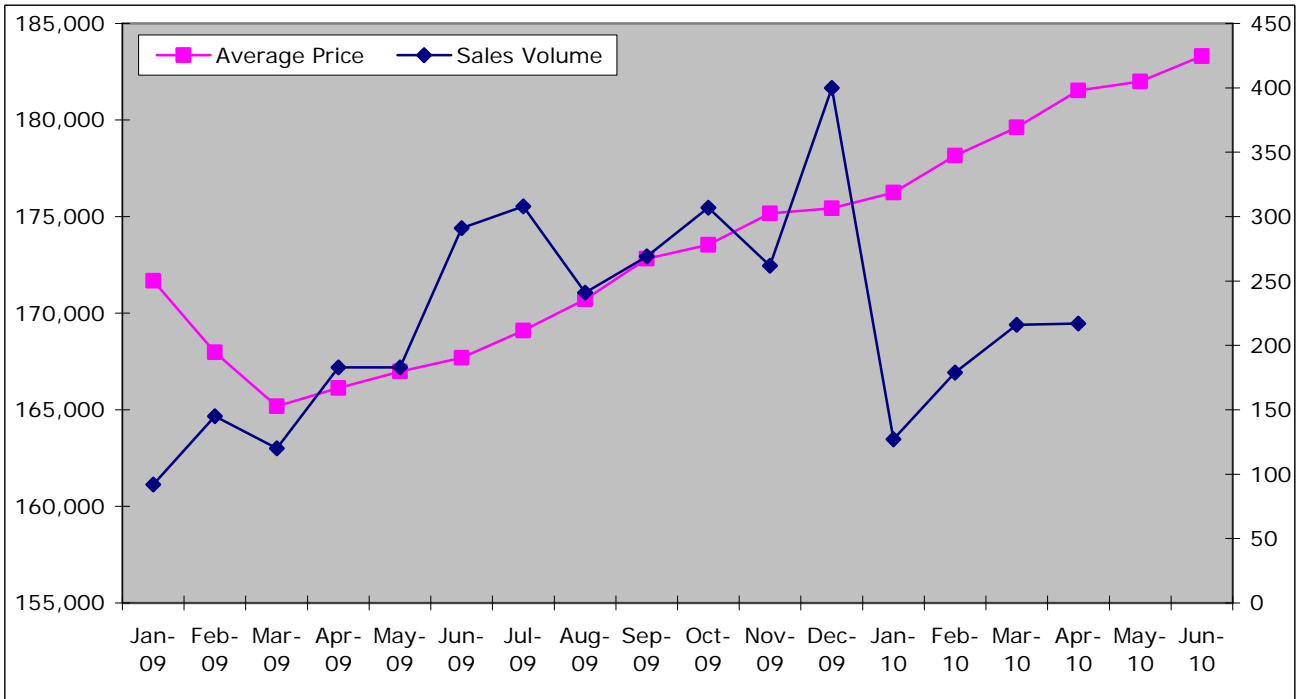
Source: Land Registry, House Price Index

Figure: North Yorkshire – Average Price & Sales Volume



Source: Land Registry, House Price Index

Figure: York – Average Price & Sales Volume



Source: Land Registry, House Price Index

## Mean House Prices

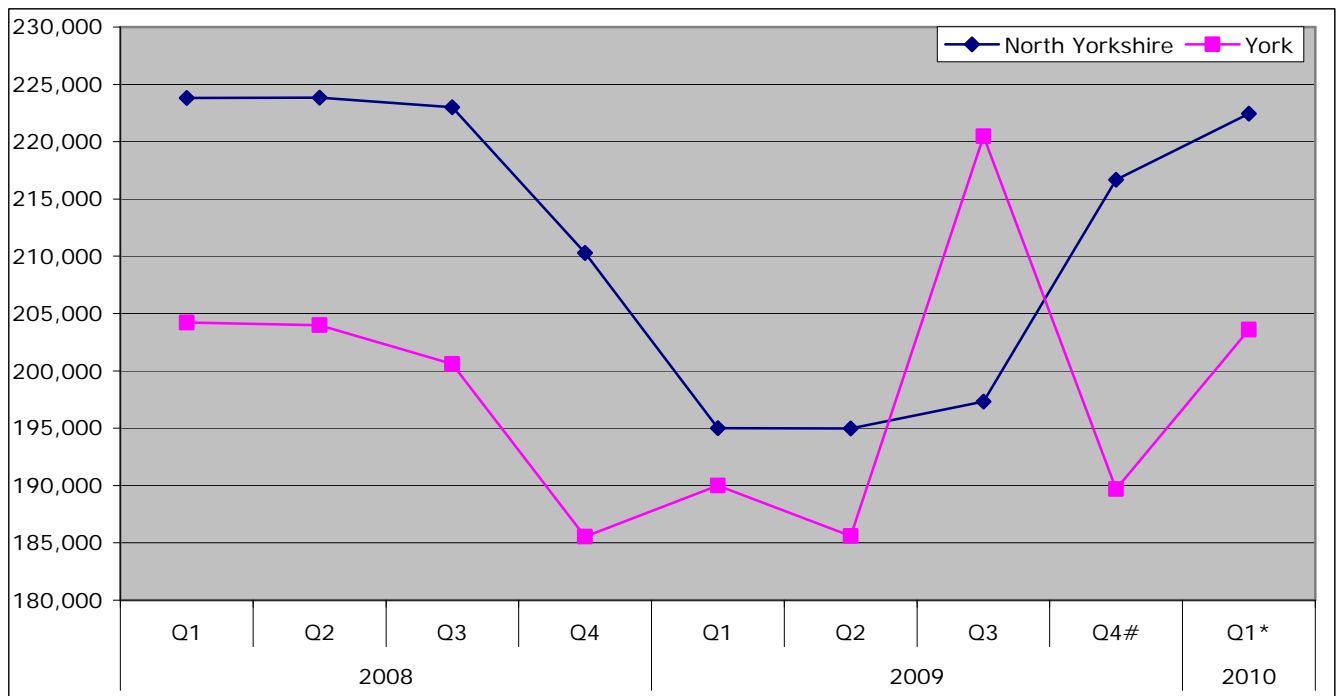
	Quarter 1 2010*	Change on previous quarter		Change on previous year	
England	238,341	£16,262	7.3%	£37,802	18.9%
Yorkshire & Humber	158,069	-£3,090	-1.9%	£17,217	12.2%
York & North Yorkshire	216,312	£5,764	2.7%	£24,380	12.7%
North Yorkshire	222,428	£5,741	2.6%	£27,409	14.1%
York	203,587	£13,896	7.3%	£13,593	7.2%
Craven	226,734	£24,387	12.1%	£58,367	34.7%
Hambleton	228,457	-£4,803	-2.1%	£31,048	15.7%
Harrogate	275,181	£15,740	6.1%	£35,208	14.7%
Richmondshire	238,311	£10,010	4.4%	£29,801	14.3%
Ryedale	211,327	-£2,674	-1.2%	£1,174	0.6%
Scarborough	161,251	-£8,440	-5.0%	£10,494	7.0%
Selby	185,646	-£2,005	-1.1%	£15,358	9.0%

Source: DCLG

# Data has been revised

\* Data is provisional

Figure: Mean House Prices, North Yorkshire and York



Source: DCLG

# Data has been revised

\* Data is provisional

## Property Sales

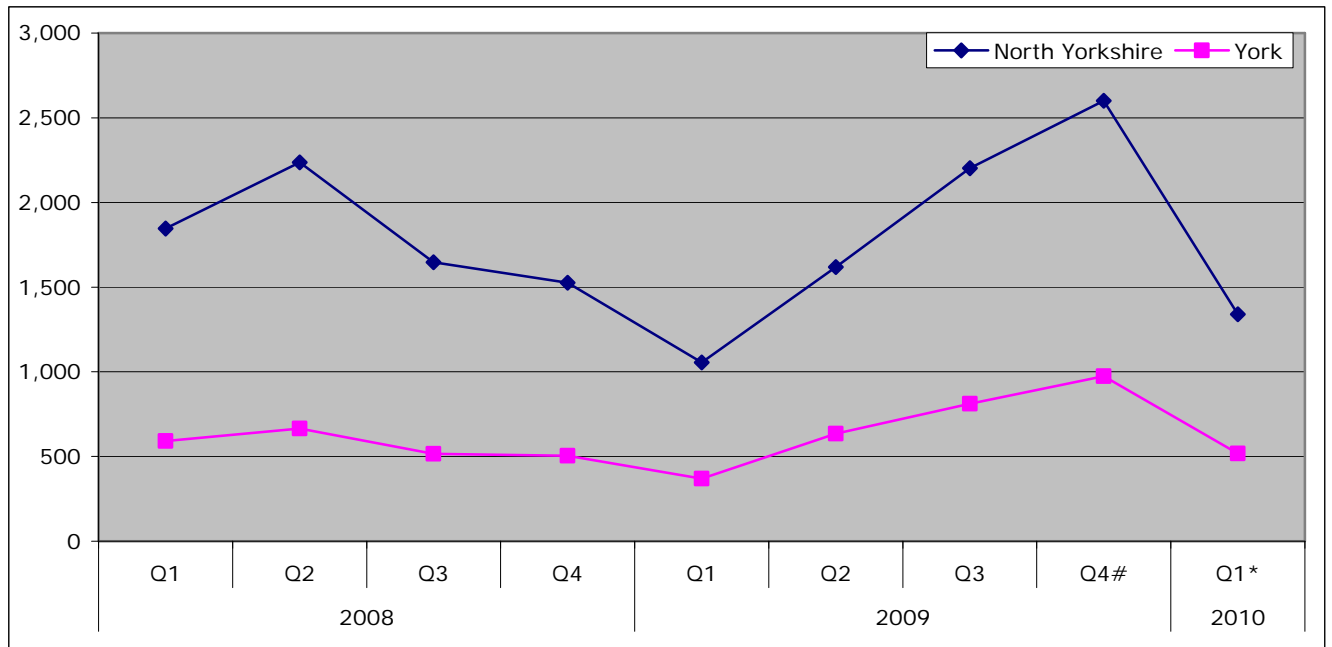
	Quarter 1 2010*	Change on previous quarter		Change on previous year	
England	121,558	-74,681	-38.1%	34,269	39.3%
Yorkshire & Humber	10,390	-6,871	-39.8%	1,853	21.7%
York & North Yorkshire	1,858	-1,717	-48.0%	434	30.5%
North Yorkshire	1,340	-1,261	-48.5%	285	27.0%
York	518	-456	-46.8%	149	40.4%
Craven	139	-108	-43.7%	47	51.1%
Hambleton	176	-180	-50.6%	31	21.4%
Harrogate	403	-328	-44.9%	87	27.5%
Richmondshire	66	-98	-59.8%	5	8.2%
Ryedale	111	-96	-46.4%	44	65.7%
Scarborough	261	-237	-47.6%	21	8.8%
Selby	184	-214	-53.8%	50	37.3%

Source: DCLG

# Data has been revised

\* Data is provisional

Figure: Number of Property Sales, North Yorkshire and York



Source: DCLG

# Data has been revised

\* Data is provisional

## Mortgage and Landlord Possession Claims/Orders

The following data indicates the number of claims/orders that have been issued at County Court level for possession of properties either under mortgage or landlord possession.

N.B. Important note - Introduction of Mortgage Pre-Action Protocol (MPAP) on 19 November 2008.

A new mortgage pre action protocol (MPAP), was introduced for possession claims in the County Courts with effect from 19 November 2008.

Evidence from administrative records from October to December 2008 suggests that this date coincided with a fall of around 50% in the daily and weekly numbers of new mortgage repossession claims being issued in the courts. It therefore seems highly likely that the launch of the MPAP has led to a marked fall in the number of new claims being issued during the latter part of the period covered by this bulletin. However, given the apparent cause, users should exercise caution in drawing broader inferences from the fall in mortgage possession claims issued in Q4 2008.

Mortgage possession orders are typically made around 8 weeks after the corresponding claims are issued. For this reason, the impact of the MPAP is expected to occur during the early months of 2009. At this early stage is not clear to what extent the launch of the MPAP has led to a permanent fall in the numbers of new mortgage possession claims being issued, as opposed to some merely being postponed. This will become clearer as statistics for 2009 are published.

### Mortgage Possession Claims Issued

	Q2 2008	Q3 2008	Q4 2008	Q1 2009	Q2 2009	Q3 2009	Q4 2009	Q1 2010	% change since Q1 2009	% change since Q4 2009
Yorkshire & Humber	3,928	3,962	2,669	2,476	2,760	2,820	1,990	2,065	-16.6%	3.8%
York & North Yorkshire	337	358	258	237	245	230	220	170	-28.3%	-22.7%
Harrogate	56	44	45	40	45	50	40	35	-12.5%	-12.5%
Scarborough	97	138	93	78	80	65	60	55	-29.5%	-8.3%
Skipton	41	29	20	24	25	25	25	15	-37.5%	-40.0%
York	143	147	100	95	95	90	70	65	-31.6%	-7.1%

Source: Ministry of Justice

### Mortgage Possession Orders Issued

	Q2 2008	Q3 2008	Q4 2008	Q1 2009	Q2 2009	Q3 2009	Q4 2009	Q1 2010	% change since Q1 2009	% change since Q4 2009
Yorkshire & Humber	-	-	-	1,821	1,920	2,325	1,875	1,635	-10.2%	-12.8%
York & North Yorkshire	-	-	-	152	160	195	175	130	-14.5%	-25.7%
Harrogate	-	-	-	30	25	40	30	25	-16.7%	-16.7%
Scarborough	80	116	113	57	45	65	35	40	-29.8%	14.3%
Skipton	32	31	27	15	20	15	15	15	0.0%	0.0%
York	106	93	123	50	70	75	55	50	0.0%	-9.1%

Source: Ministry of Justice

### Landlord Possession Claims issued

	Q2 2008	Q3 2008	Q4 2008	Q1 2009	Q2 2009	Q3 2009	Q4 2009	Q1 2010	% change since Q1 2009	% change since Q4 2009
Yorkshire & Humber	2,656	2,434	2,438	2,370	2,340	2,215	2,205	2,255	-4.9%	2.3%
York & North Yorkshire	252	288	266	232	240	210	250	245	5.6%	-2.0%
Harrogate	48	56	40	33	40	35	25	30	-9.1%	20.0%
Scarborough	64	81	85	60	75	65	65	65	8.3%	0.0%
Skipton	8	16	18	12	10	10	10	15	25.0%	50.0%
York	132	135	123	127	115	100	100	120	-5.5%	20.0%

Source: Ministry of Justice

### Landlord Possession Orders issued

	Q2 2008	Q3 2008	Q4 2008	Q1 2009	Q2 2009	Q3 2009	Q4 2009	Q1 2010	% change since Q1 2009	% change since Q4 2009
Yorkshire & Humber	-	-	-	2,403	1,660	1,815	1,725	1,650	-31.3%	-4.3%
York & North Yorkshire	-	-	-	233	-	190	220	145	-37.8%	-34.1%
Harrogate	-	-	-	44	20	35	25	15	-65.9%	-40.0%
Scarborough	52	69	75	70	30	70	55	60	-14.3%	9.1%
Skipton	5	13	12	12	*	15	10	10	-16.7%	-
York	75	106	116	107	95	70	90	65	-39.3%	-27.8%

Source: Ministry of Justice

\* The figure is not provided as the number of claims leading to an order made is either 7 or less, or if it is a % change where there are fewer than 30 observations in the base period

## Planning

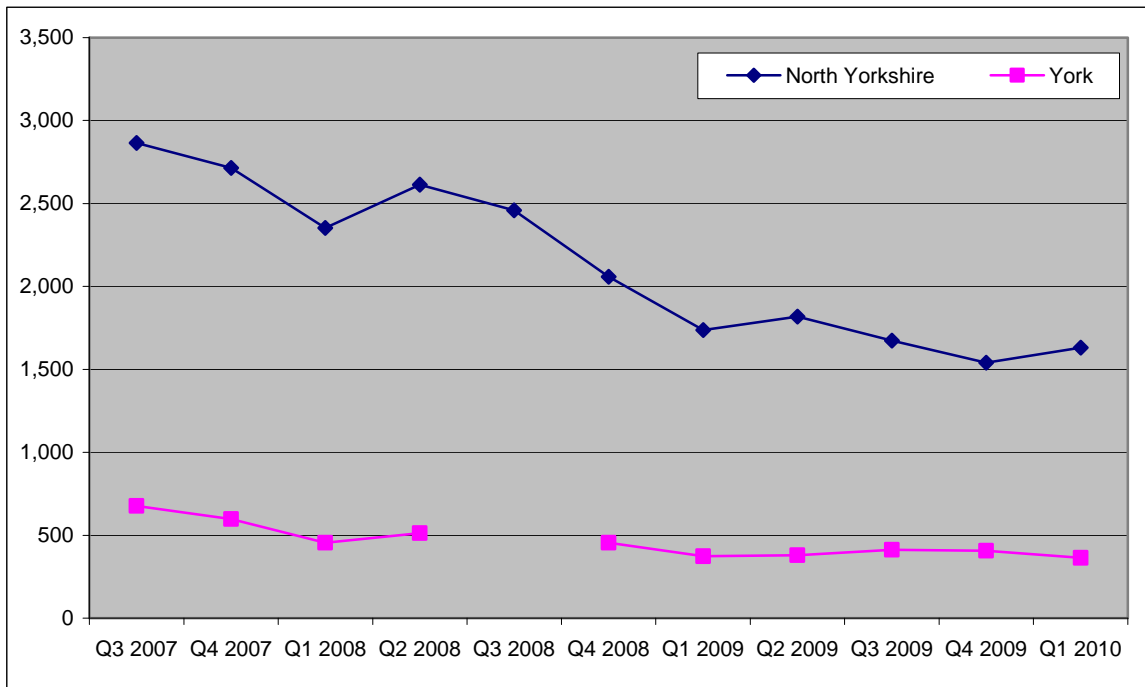
### Total Planning Decisions

	Quarter 1 2010*	Change on previous quarter		Change on previous year	
England	95,700	-9,620	-9.1	2,600	2.8
Yorkshire and Humber	7,531	-922	-10.9	-269	-3.4
York and North Yorkshire	1,994	46	2.4	-117	-5.5
North Yorkshire	1,631	90	5.8	-106	-6.1
York	363	-44	-10.8	-11	-2.9
Craven	118	-16	-11.9	-3	-2.5
Hambleton	238	-33	-12.2	-40	-14.4
Harrogate	473	21	4.6	12	2.6
Richmondshire	104	-40	-27.8	-34	-24.6
Ryedale	141	-27	-16.1	-14	-9.0
Scarborough	164	-42	-20.4	-1	-0.6
Selby	155	-11	-6.6	-13	-7.7
North York Moors	124	-43	-25.7	-19	-13.3
Yorkshire Dales	114	-	-	6	5.6

Source: Statistics of Planning Decisions, CLG

- Data cannot be calculated

### Total Planning Decisions, North Yorkshire/York



Source: Statistics of Planning Decisions, CLG

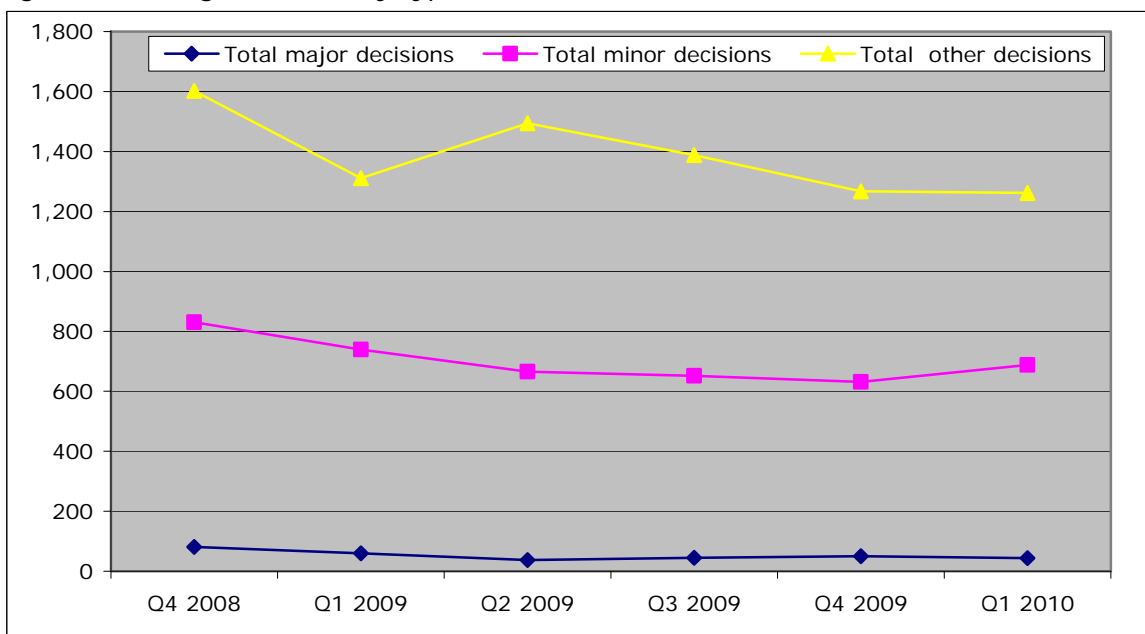
N.B. The number of decisions made in Q3 2008 is not available and therefore excluded from the chart. The figure for North Yorkshire for Q2 2009 does not include data for Craven

### Breakdown of planning decisions by type in York and North Yorkshire

	Q1 2010	Change on previous quarter		Change on previous year	
		Change	%	Change	%
Total major decisions	44	-6	-12.0%	-16	-26.7%
Total minor decisions	688	57	9.0%	-52	-7.0%
Total other decisions	1,262	-5	-0.4%	-49	-3.7%
<b>Total</b>	<b>1,994</b>	<b>46</b>	<b>2.4%</b>	<b>-117</b>	<b>-5.5%</b>

Source: Statistics of Planning Decisions, CLG

Figure: Planning Decisions by type, York and North Yorkshire



Source: Statistics of Planning Decisions, CLG

N.B Figures shown for Q2 2009 does not include data for Craven

## **Community and Voluntary Sector**

### **Demand for CAB services**

2009/10 Q3	Craven	Hambleton	Richmondshire	Ripon	Ryedale	Scarborough	Selby
Benefits	607	903	805	446	703	984	1,247
Debt	414	1598	1,016	113	826	1,732	1,432
Employment	224	291	252	111	129	286	1,128
Health & Community	38	34	26	25	16	43	29
Relationships & family	84	146	156	49	53	145	169
Total	1,367	2,972	2,255	744	1,727	3,190	4,005

Source: York and North Yorkshire Infrastructure Consortium.

N.B it is hoped CAB figures for York and Harrogate will be included next quarter. A new sub-regional figure is included in the main report.