

National Picture

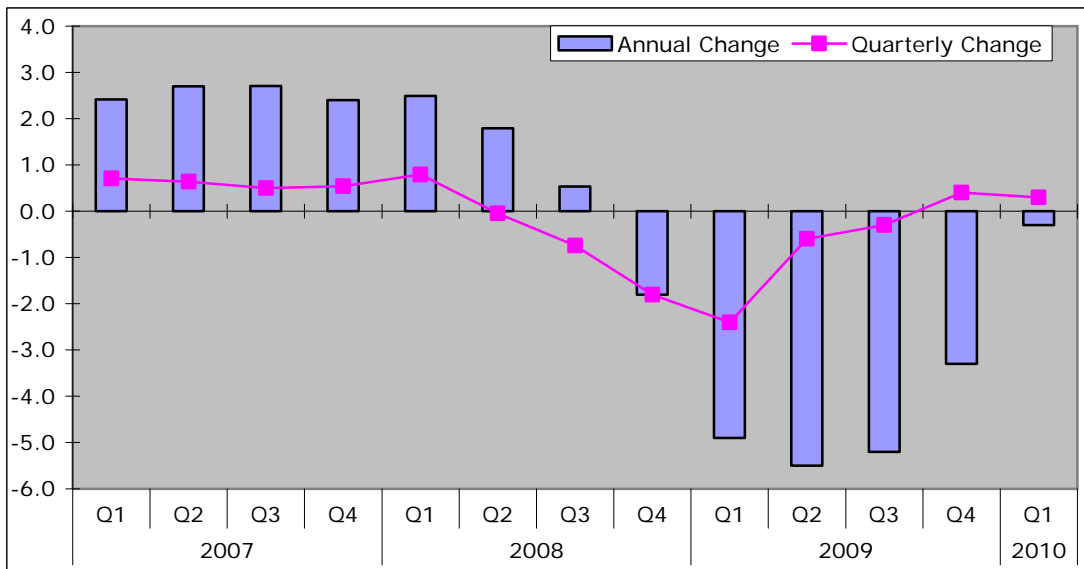
Key Indicators	April 2010	May 2010 *	Change
Inflation figures - CPI	3.7	3.4	-0.3
Inflation figures - RPI	5.3	5.1	-0.2
New Businesses - VAT Registrations	17,242	14,865	-2,377 -13.8%
VAT De-registrations	15,408	18,860	3,452 22.4%

Source: ONS, UK Trade Info

* Provisional

- ◆ Revised estimates suggest GDP increased by 0.3% in Q1 of 2010.

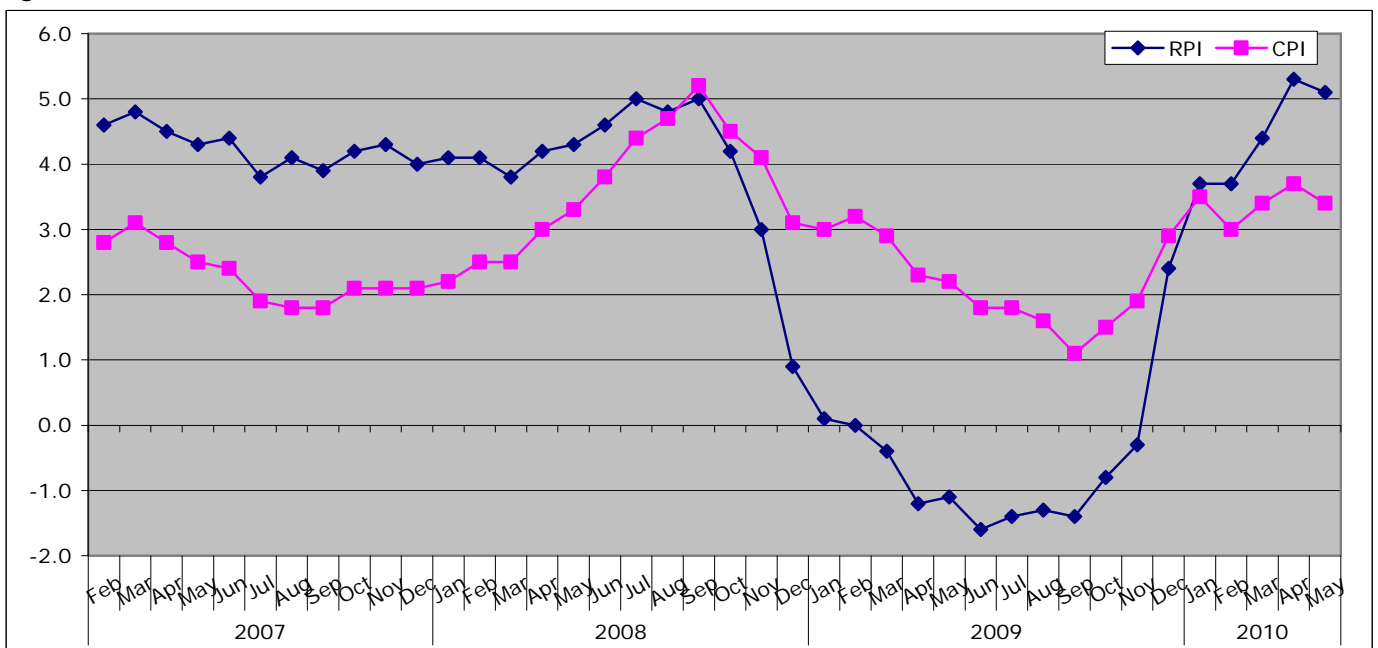
Figure: Change to GDP



Source: ONS

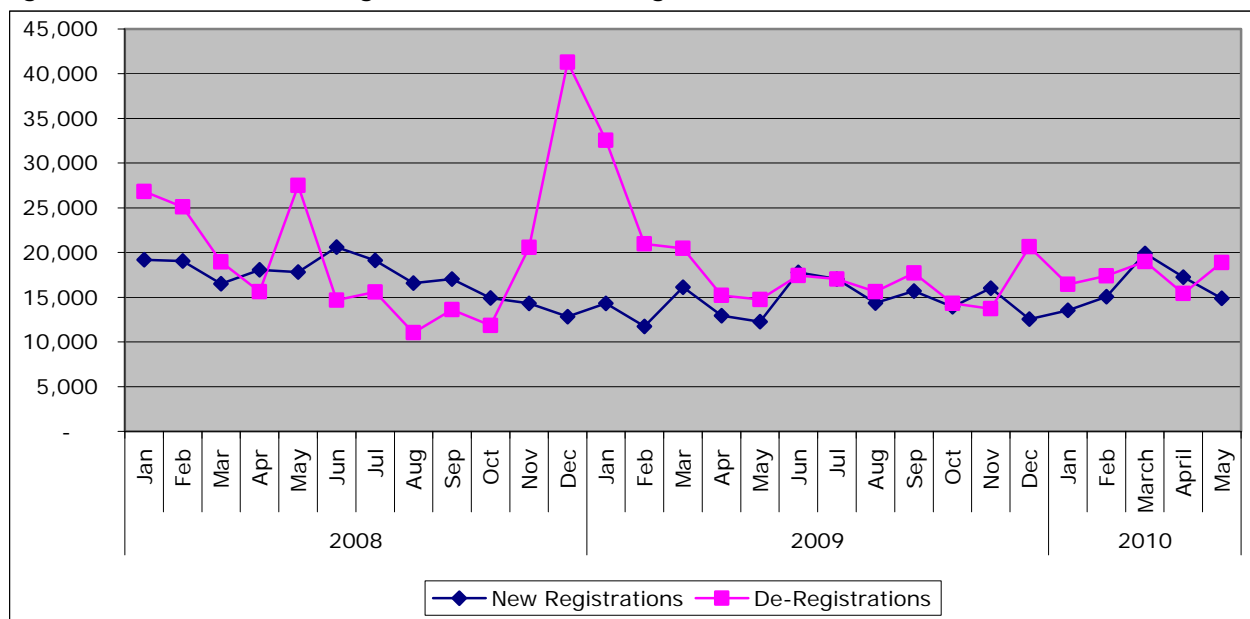
* Data is provisional

Figure: Inflation Trends



Source: ONS

Figure 1: New Business Registrations and De-Registrations



Source: UK Trade Info

Local Picture

Labour Market

Confirmed Job losses - April 2010

Company	Location	No. jobs	Type of Service
Skipton Building Society	Scarborough	-136	Financial Services
Total		-136	

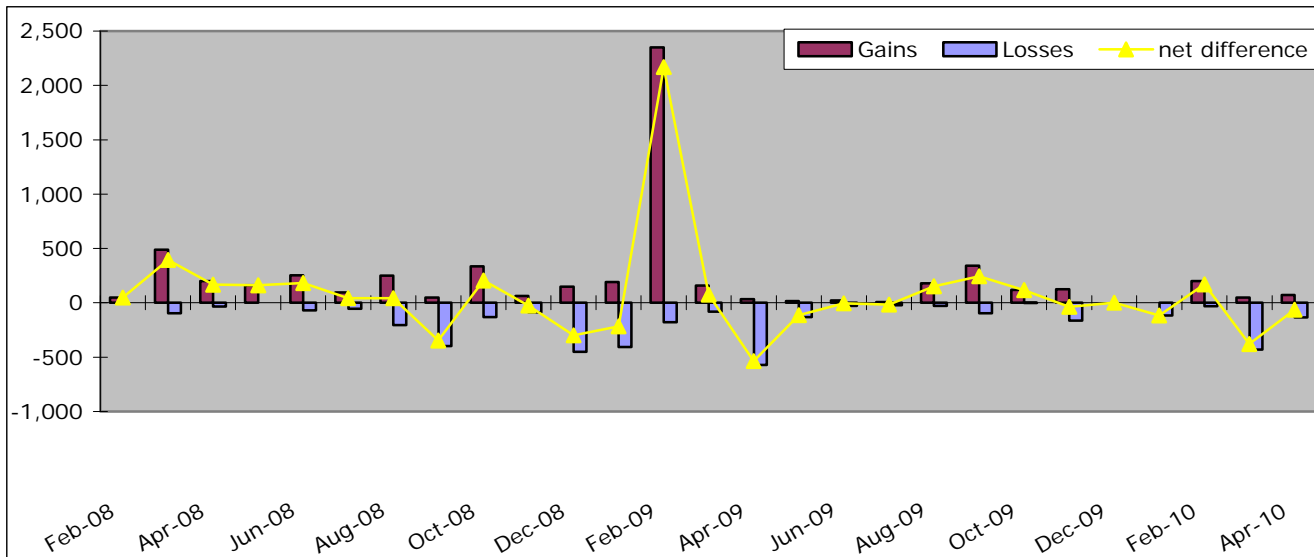
Confirmed Job Gains - April 2010

Company	Location	No. Jobs	Type of Service
Nespresso (Nestle)	York	73	Manufacturing Food, Drink and Tobacco
Total		73	

Source: Yorkshire Futures Monthly jobs database

N.B. An updated jobs database is currently unavailable. Updated information will be provided when available.

Job Gains, Losses and net difference



Source: Yorkshire Forward jobs database

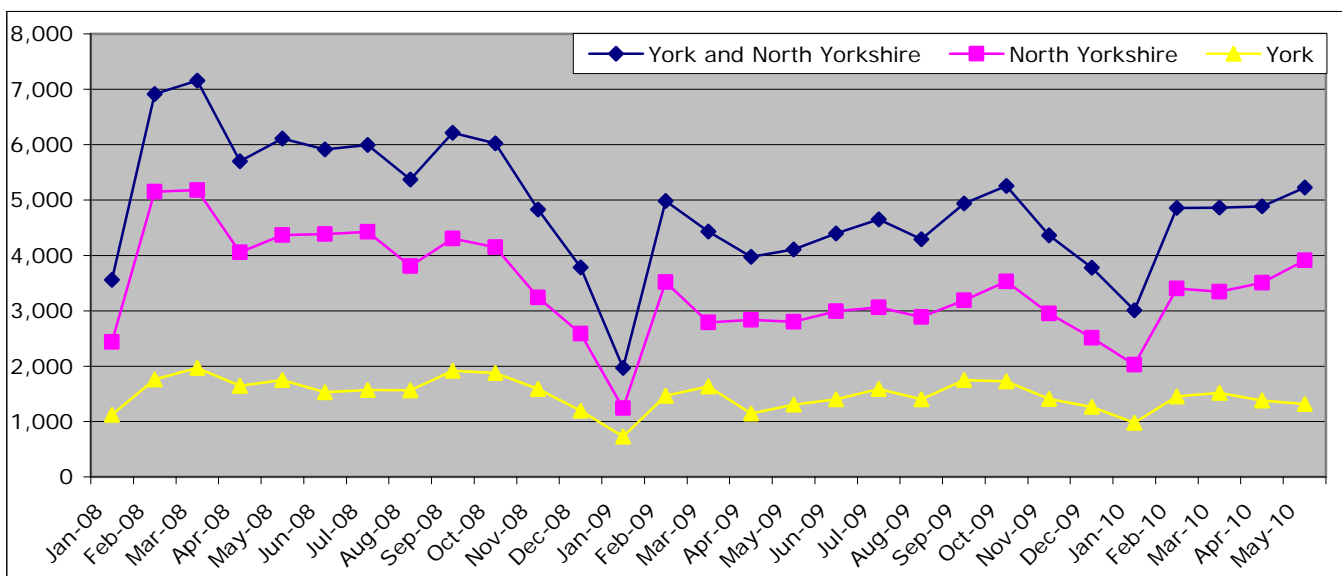
Job Vacancies

Number of notified job vacancies

	May 2010	Monthly Change		Annual Change	
England	291,607	10,769	3.8%	86,932	42.5%
Yorkshire and Humber	29,167	-387	-1.3%	7,101	32.2%
York and North Yorkshire	5,229	344	7.0%	1,125	27.4%
North Yorkshire	3,910	405	11.6%	1,111	39.7%
York	1,318	-62	-4.5%	14	1.1%
Craven	216	-93	-30.1%	70	47.9%
Hambleton	533	13	2.5%	192	56.3%
Harrogate	1,308	328	33.5%	347	36.1%
Richmondshire	458	111	32.0%	276	151.6%
Ryedale	259	75	40.8%	50	23.9%
Scarborough	560	-72	-11.4%	-6	-1.1%
Selby	576	43	8.1%	181	45.8%

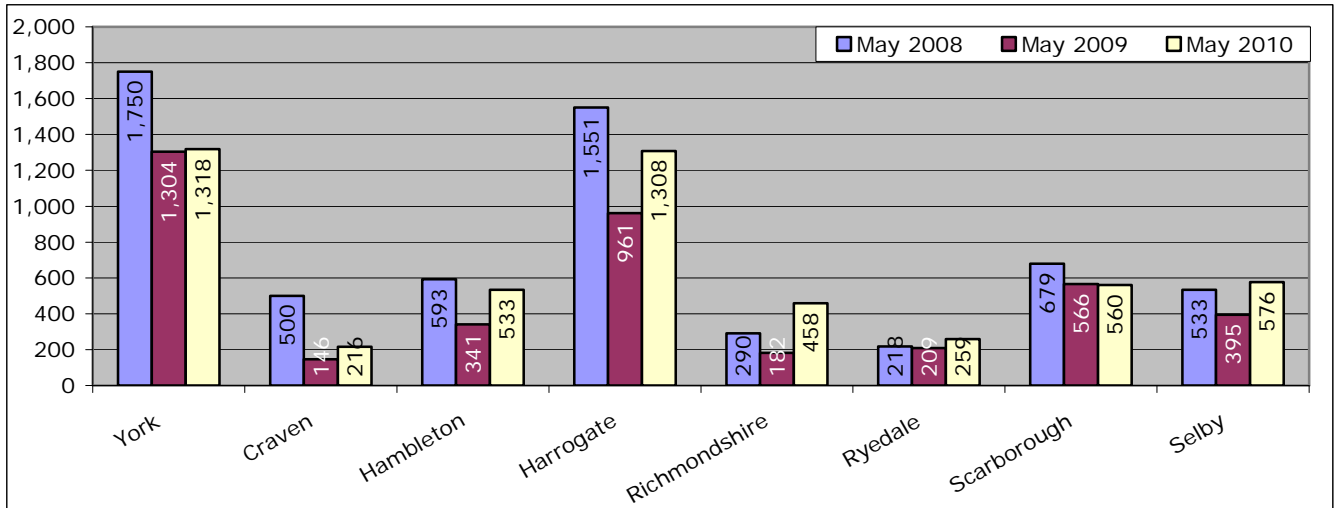
Source: Job Centre Plus, via Nomis

Number of vacancies trend



Source: Job Centre Plus, via Nomis

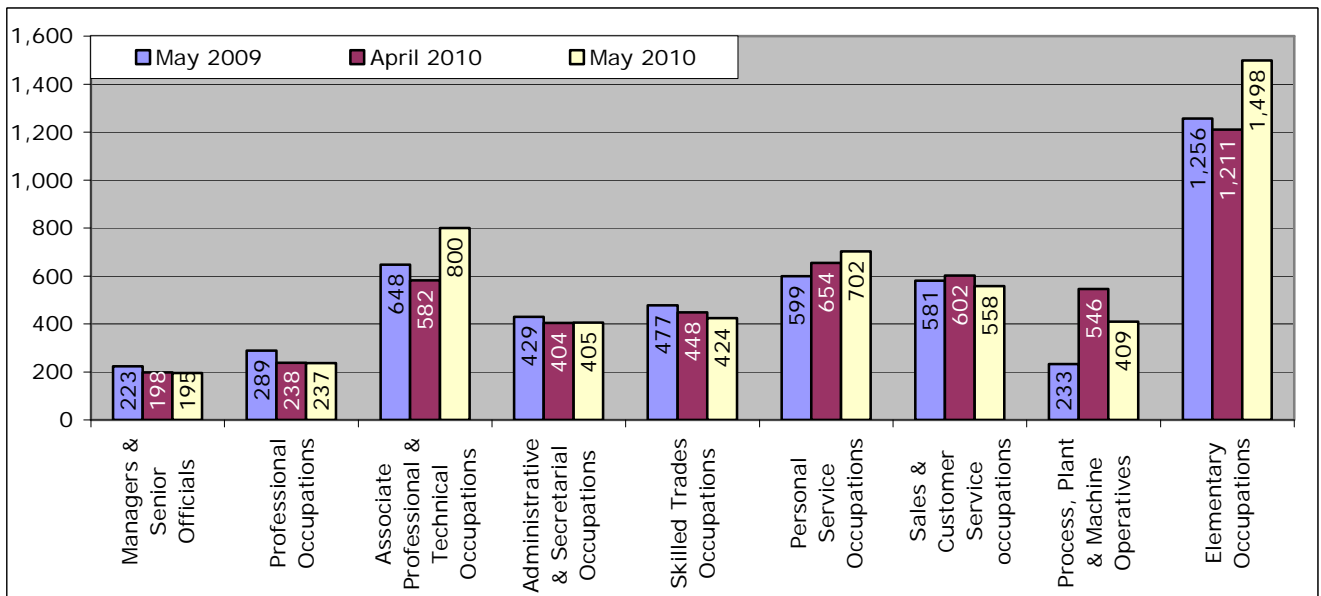
Number of Vacancies, Year on Year comparison



Source: Job Centre Plus, via Nomis

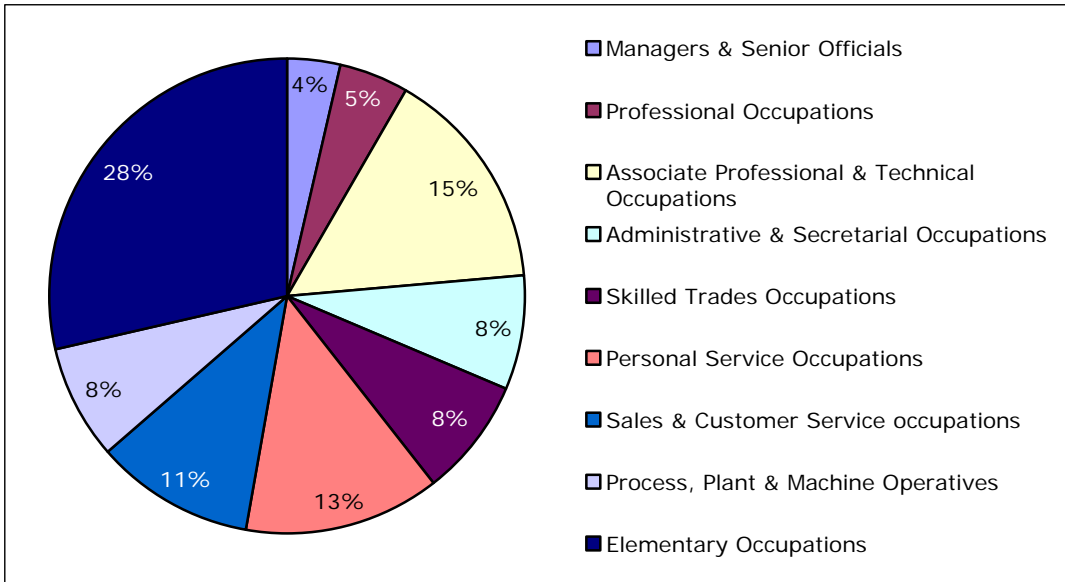
Vacancies by Occupation

Notified Vacancies by Occupation, York and North Yorkshire



Source: Job Centre Plus, via Nomis

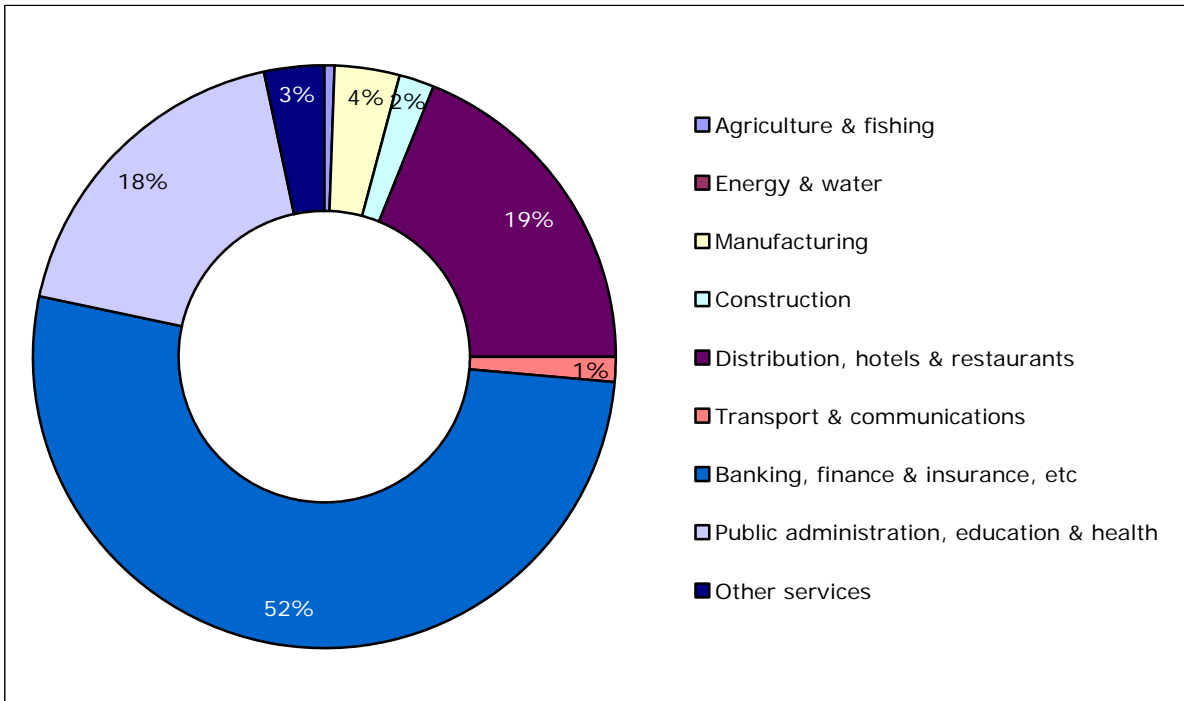
Notified vacancies by occupation, York and North Yorkshire, May 2010



Source: Job Centre Plus, via Nomis

Vacancies by Industry

Number of notified vacancies by broad industrial sector



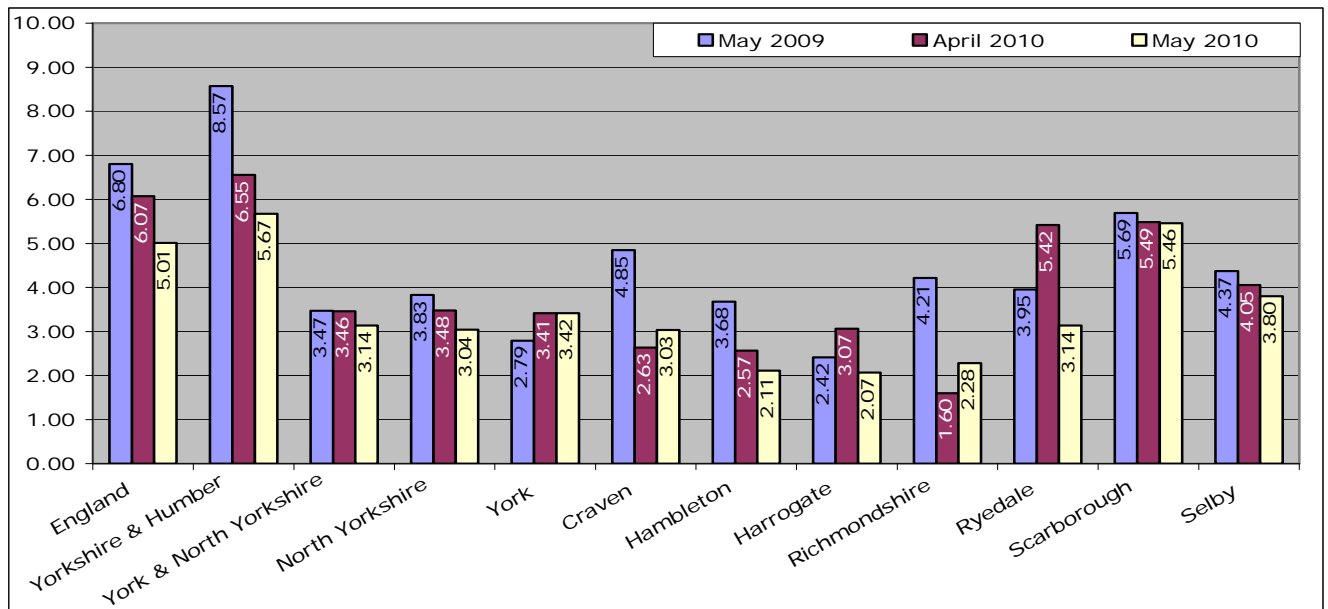
Source: Job Centre Plus, via Nomis

Number of JSA Claimants to Notified Vacancies ratio

	May 2009	April 2010	May 2010	Annual Change	Monthly Change
England	6.80	6.07	5.01	-1.80	-1.06
Yorkshire and Humber	8.57	6.55	5.67	-2.90	-0.88
York and North Yorkshire	3.47	3.46	3.14	-0.33	-0.32
North Yorkshire	3.83	3.48	3.04	-0.79	-0.44
York	2.79	3.41	3.42	0.63	0.00
Craven	4.85	2.63	3.03	-1.82	0.40
Hambleton	3.68	2.57	2.11	-1.57	-0.46
Harrogate	2.42	3.07	2.07	-0.35	-1.00
Richmondshire	4.21	1.60	2.28	-1.93	0.68
Ryedale	3.95	5.42	3.14	-0.81	-2.28
Scarborough	5.69	5.49	5.46	-0.23	-0.03
Selby	4.37	4.05	3.80	-0.57	-0.25

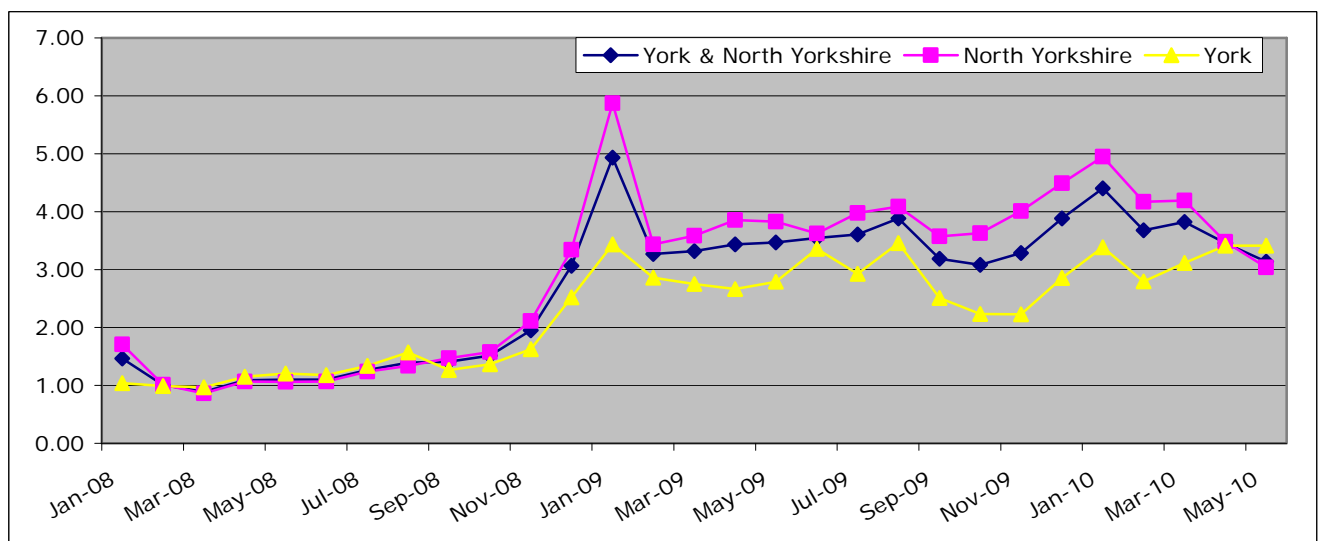
Source: Nomis

Number of Claimants to Notified Vacancies, Year on Year comparison



Source: Nomis

Number of Claimants to Notified Vacancies ratio trend



Source: Nomis

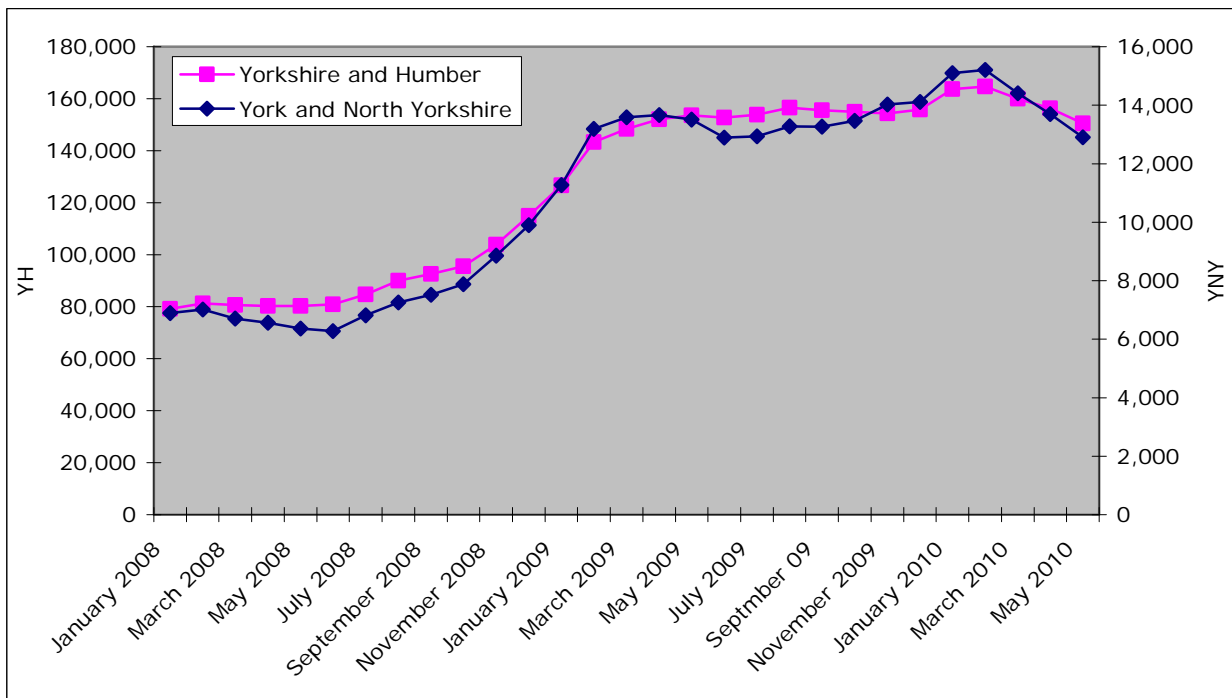
Unemployment

Total Number JSA Claimants (Claimant Count)

	May 2010	Monthly Change	Monthly % Change	Annual Change	Annual % Change
England	1,238,928	-55,983	-4.3	-72,755	-5.5
Yorkshire and Humber	150,531	-5,796	-3.7	-3,051	-2.0
York and North Yorkshire	12,906	-789	-5.8	-603	-4.5
North Yorkshire	9,168	-570	-5.9	-599	-6.1
York	3,738	-219	-5.5	-4	-0.1
Craven	667	-26	-3.8	-2	-0.3
Hambleton	1,070	-46	-4.1	-103	-8.8
Harrogate	1,912	-87	-4.4	-241	-11.2
Richmondshire	547	-35	-6.0	-68	-11.1
Ryedale	656	-81	-11.0	-67	-9.3
Scarborough	2,723	-206	-7.0	55	2.1
Selby	1,593	-89	-5.3	-173	-9.8

Source: Nomis

Total Number of Claimants



Source: Nomis

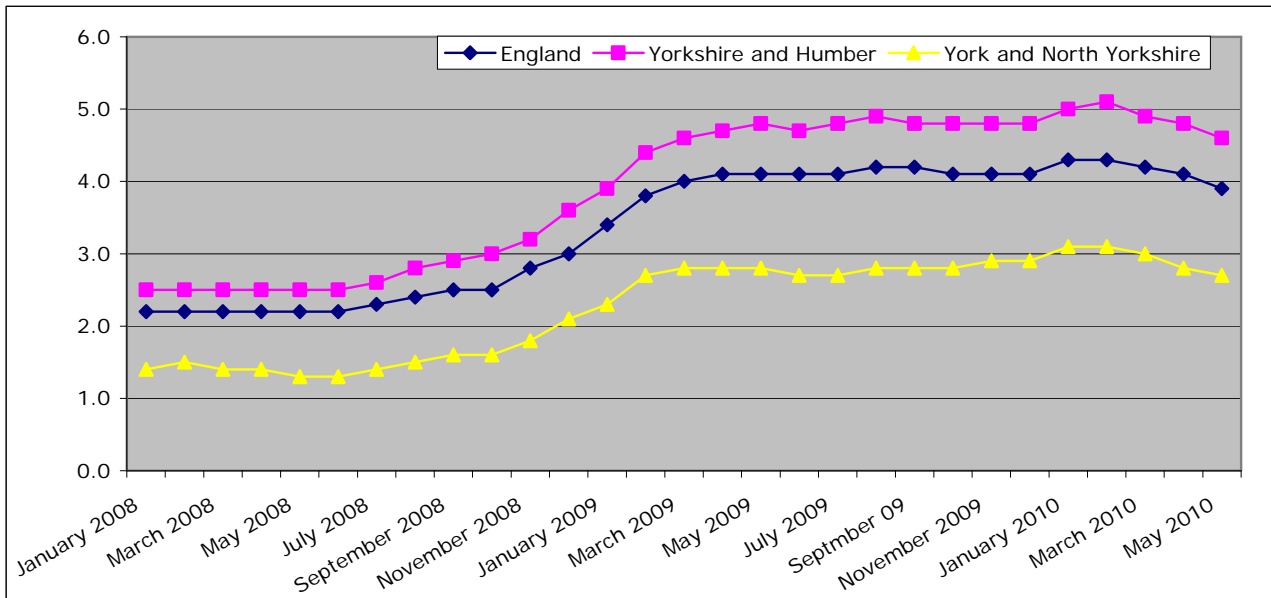
Claimant Count Rate

	May 2010	Monthly Change	Annual Change
England	3.9	-0.2	-0.2
Yorkshire and Humber	4.6	-0.2	-0.2
York and North Yorkshire	2.7	-0.1	-0.1
North Yorkshire	2.6	-0.1	-0.1
York	2.9	-0.2	-0.1
Craven	2.1	0.0	0.0
Hambleton	2.1	-0.1	-0.2
Harrogate	2.0	-0.1	-0.2
Richmondshire	1.7	-0.1	-0.2
Ryedale	2.1	-0.3	-0.2
Scarborough	4.4	-0.3	0.1
Selby	3.1	-0.2	-0.4

Source: Nomis

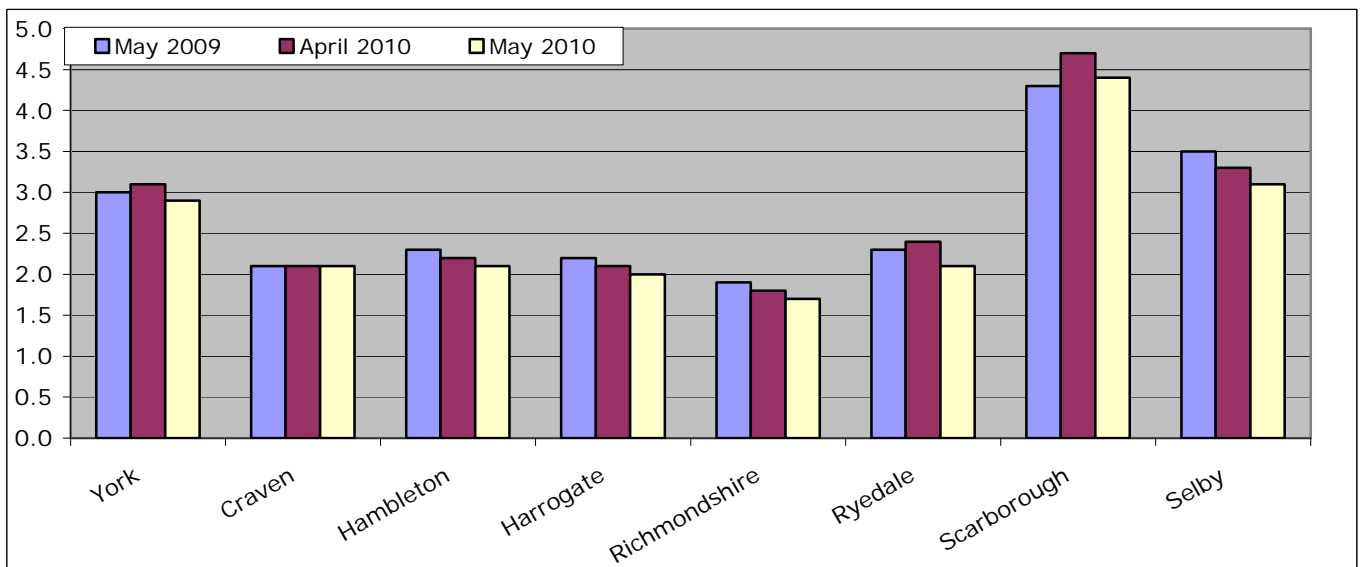
Change is percentage point

Claimant Count Rate



Source: Nomis

Claimant Count Rate



Source: Nomis

Claimant Flows

Claimant Count On-Flow

	May 2010	Monthly Change	Monthly % change	Annual Change	Annual % change
England	234,115	-8,551	-3.5	-31,095	-11.7
Yorkshire and Humber	27,097	-1,160	-4.1	-2,962	-9.9
York and North Yorkshire	2,695	-30	-1.1	-155	-5.4
North Yorkshire	1,905	9	0.5	-82	-4.1
York	790	-39	-4.7	-72	-8.4
Craven	142	8	6.0	-11	-7.2
Hambleton	231	-4	-1.7	-28	-10.8
Harrogate	453	40	9.7	7	1.6
Richmondshire	135	-25	-15.6	15	12.5
Ryedale	121	-13	-9.7	-17	-12.3
Scarborough	491	23	4.9	-37	-7.0
Selby	332	-19	-5.4	-11	-3.2

Source: Nomis

Claimant Count Off-Flow

	May 2010	Monthly Change	Monthly % change	Annual Change	Annual % change
England	279,536	-2,312	-0.8	22,851	8.9
Yorkshire and Humber	31,639	-53	-0.2	3,299	11.6
York and North Yorkshire	3,376	-4	-0.1	420	14.2
North Yorkshire	2,392	-125	-5.0	276	13.0
York	984	121	14.0	144	17.1
Craven	168	2	1.2	12	7.7
Hambleton	271	25	10.2	2	0.7
Harrogate	527	-35	-6.2	105	24.9
Richmondshire	170	6	3.7	5	3.0
Ryedale	189	-42	-18.2	36	23.5
Scarborough	667	-103	-13.4	73	12.3
Selby	400	22	5.8	42	11.7

Source: Nomis

Claimant Count On-Flow and Off-Flow, York and North Yorkshire

	On-flow	Off-flow	Difference
May 2009	2,850	-2,956	-106
June 2009	3,003	-3,630	-627
July 2009	3,687	-3,641	46
August 2009	3,532	-3,169	363
September 2009	3,355	-3,357	-2
October 2009	3,722	-3,487	235
November 2009	3,511	-3,018	493
December 2009	3,137	-2,936	201
January 2010	2,986	-2,069	917
February 2010	3,272	-3,091	181
March 2010	3,031	-3,832	-801
April 2010	2,725	-3,380	-655
May 2010	2,695	-3,376	-681

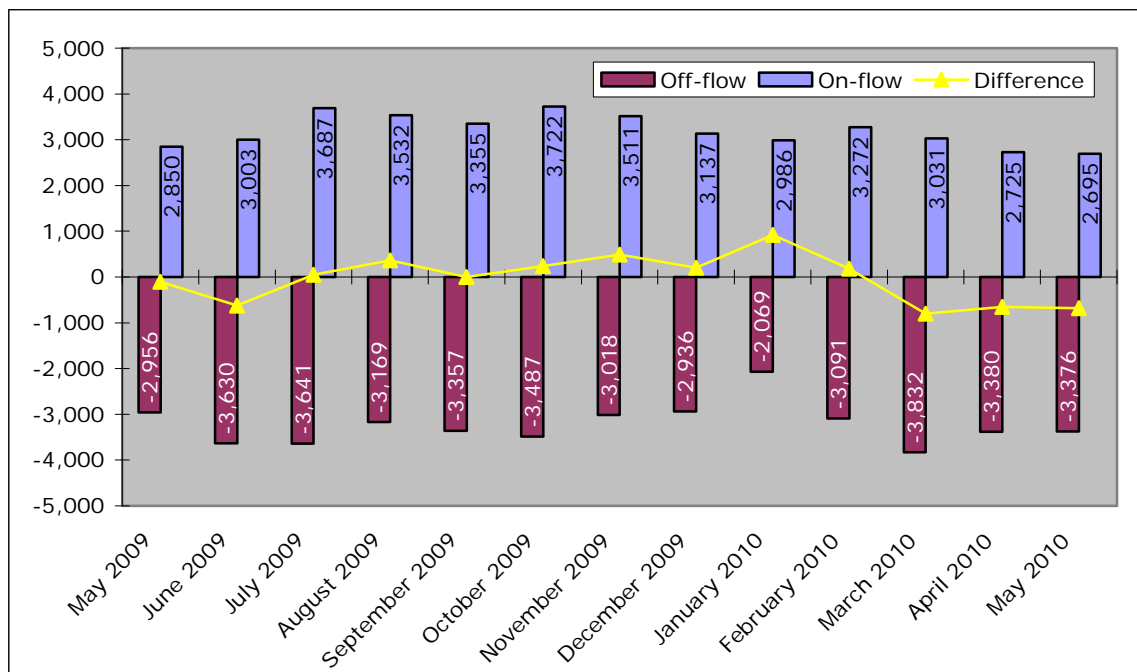
Source: Nomis

Ratio of Claimant Count Off-flow to On-flow

	May 2009	April 2010	May 2010	Annual Change	Monthly Change
England	1.03	0.86	0.84	-0.20	-0.02
Yorkshire and Humber	1.06	0.89	0.86	-0.20	-0.04
York and North Yorkshire	0.96	0.81	0.80	-0.17	-0.01
North Yorkshire	0.94	0.75	0.80	-0.14	0.04
York	1.03	0.96	0.80	-0.22	-0.16
Craven	0.98	0.81	0.85	-0.14	0.04
Hambleton	0.96	0.96	0.85	-0.11	-0.10
Harrogate	1.06	0.73	0.86	-0.20	0.12
Richmondshire	0.73	0.98	0.79	0.07	-0.18
Ryedale	0.90	0.58	0.64	-0.26	0.06
Scarborough	0.89	0.61	0.74	-0.15	0.13
Selby	0.96	0.93	0.83	-0.13	-0.10

Source: Nomis

Claimant Count On flow and Off Flow, York and North Yorkshire



Source: Nomis

Claimants by Duration

Total claiming for over 6 months

	May 2010	Monthly Change	Monthly % Change	Annual Change	Annual % Change
England	487,935	-9,170	-1.8	136,170	38.7
Yorkshire and Humber	60,210	-470	-0.8	17,860	42.2
York and North Yorkshire	4,955	-90	-1.8	1,840	59.1
North Yorkshire	3,590	-65	-1.8	1,305	57.1
York	1,370	-20	-1.4	540	65.1
Craven	250	5	2.0	115	85.2
Hambleton	370	-10	-2.6	115	45.1
Harrogate	735	-30	-3.9	290	65.2
Richmondshire	155	-5	-3.1	25	19.2
Ryedale	275	-10	-3.5	85	44.7
Scarborough	1,185	0	0.0	455	62.3
Selby	620	-10	-1.6	225	57.0

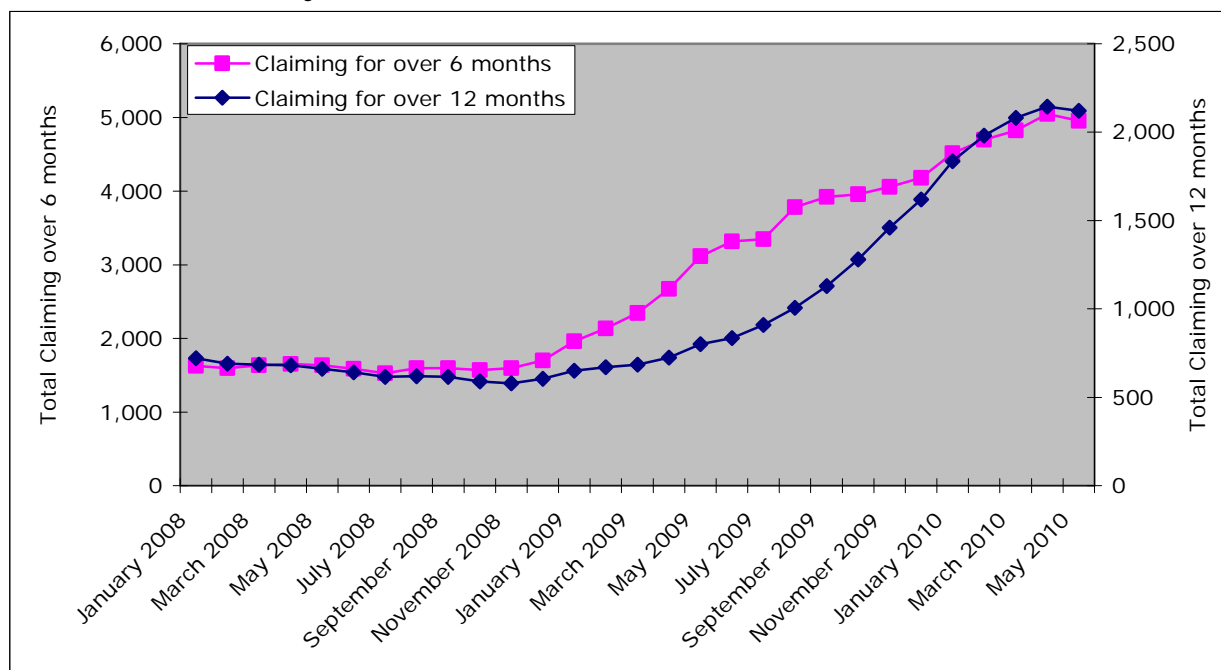
Source: Nomis

Total Claiming for Over 12 months

	May 2010	Monthly Change	Monthly % Change	Annual Change	Annual % Change
England	217,960	2,065	1.0	110,805	103.4
Yorkshire and Humber	26,140	410	1.6	14,235	119.6
York and North Yorkshire	2,120	-25	-1.2	1,320	165.0
North Yorkshire	1,535	-30	-1.9	950	162.4
York	590	10	1.7	375	174.4
Craven	95	10	11.8	60	171.4
Hambleton	160	-5	-3.0	100	166.7
Harrogate	315	0	0.0	185	142.3
Richmondshire	70	-5	-6.7	40	133.3
Ryedale	130	-15	-10.3	70	116.7
Scarborough	460	-10	-2.1	270	142.1
Selby	305	0	0.0	230	306.7

Source: Nomis

Number of claimants by duration, York and North Yorkshire



Source: Nomis

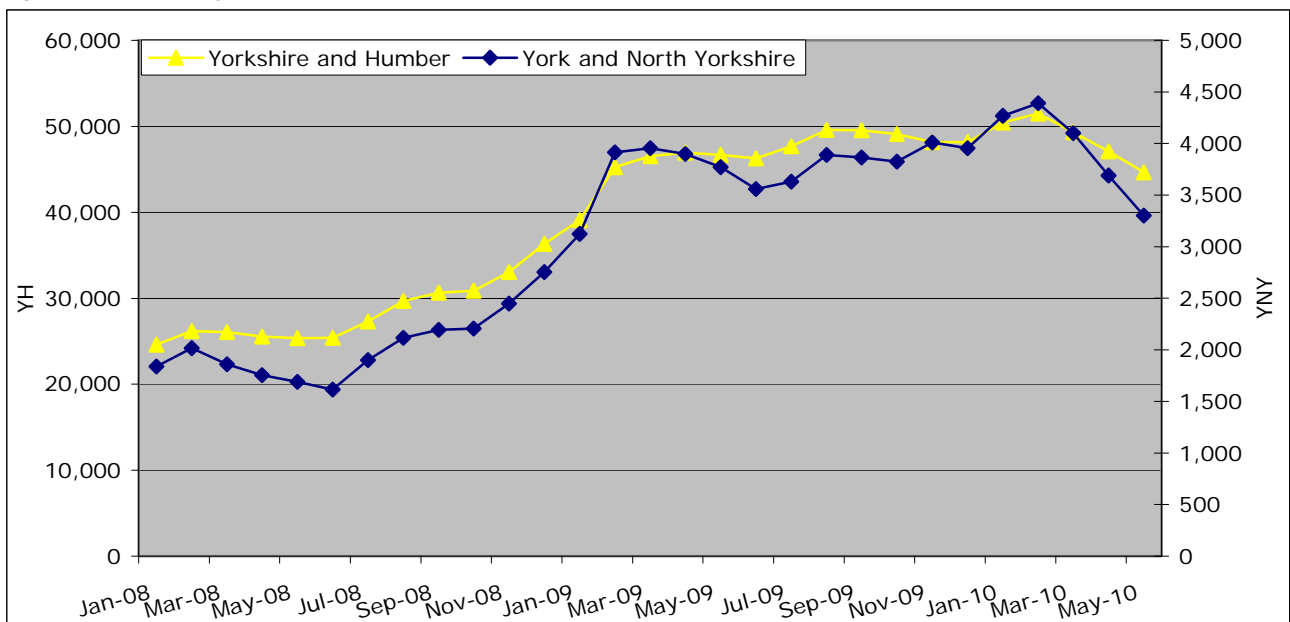
Claimants by Age

Claimant Count 18-24 year olds

	May 2010	Monthly Change	Monthly % Change	Annual Change	Annual % Change
England	338,475	-24,790	-6.8	-17,325	-4.6
Yorkshire and Humber	44,655	-2,410	-5.1	125	0.3
York and North Yorkshire	3,300	-390	-10.6	-210	-5.4
North Yorkshire	2,355	-255	-9.8	-195	-7.0
York	945	-135	-12.5	-20	-1.8
Craven	175	-15	-7.9	10	5.6
Hambleton	285	-40	-12.3	-25	-7.1
Harrogate	405	-35	-8.0	-90	-17.0
Richmondshire	165	-15	-8.3	-25	-12.2
Ryedale	170	-25	-12.8	-15	-7.1
Scarborough	730	-85	-10.4	10	1.2
Selby	430	-35	-7.5	-50	-9.7

Source: Nomis

Figure: 18 – 24 yr old claimants



Source: Nomis

ILO Employment Rate

Working Age Employment Rate in York and North Yorkshire

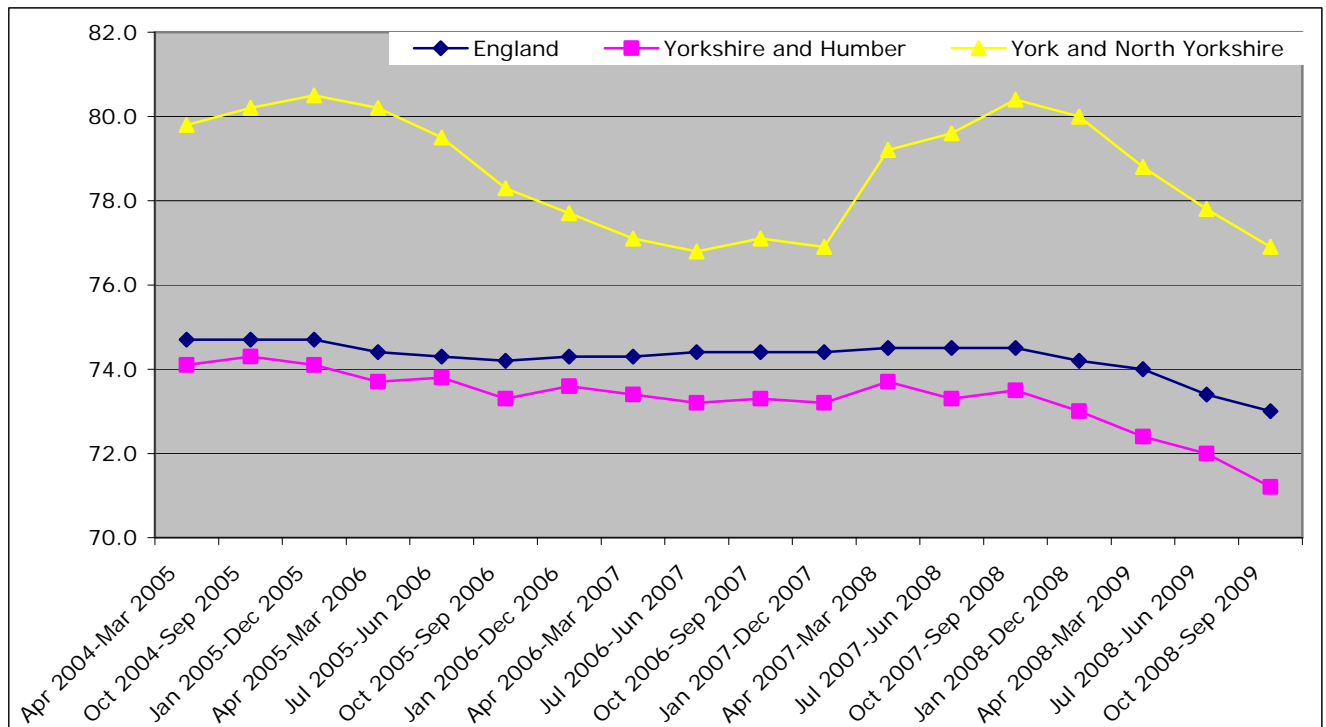
	Oct 2008 - Sep 2009	Change on previous quarter	Change on previous year
England	73.0	-0.4	-1.5
Yorkshire and Humber	71.2	-0.8	-2.3
York and North Yorkshire	76.9	-0.9	-3.5

Source: Annual Population Survey

Change is percentage point

N.B. Confidence intervals at District level are unreliable

Working Age Employment Rate



Source: Annual Population Survey

ILO Unemployment Rate

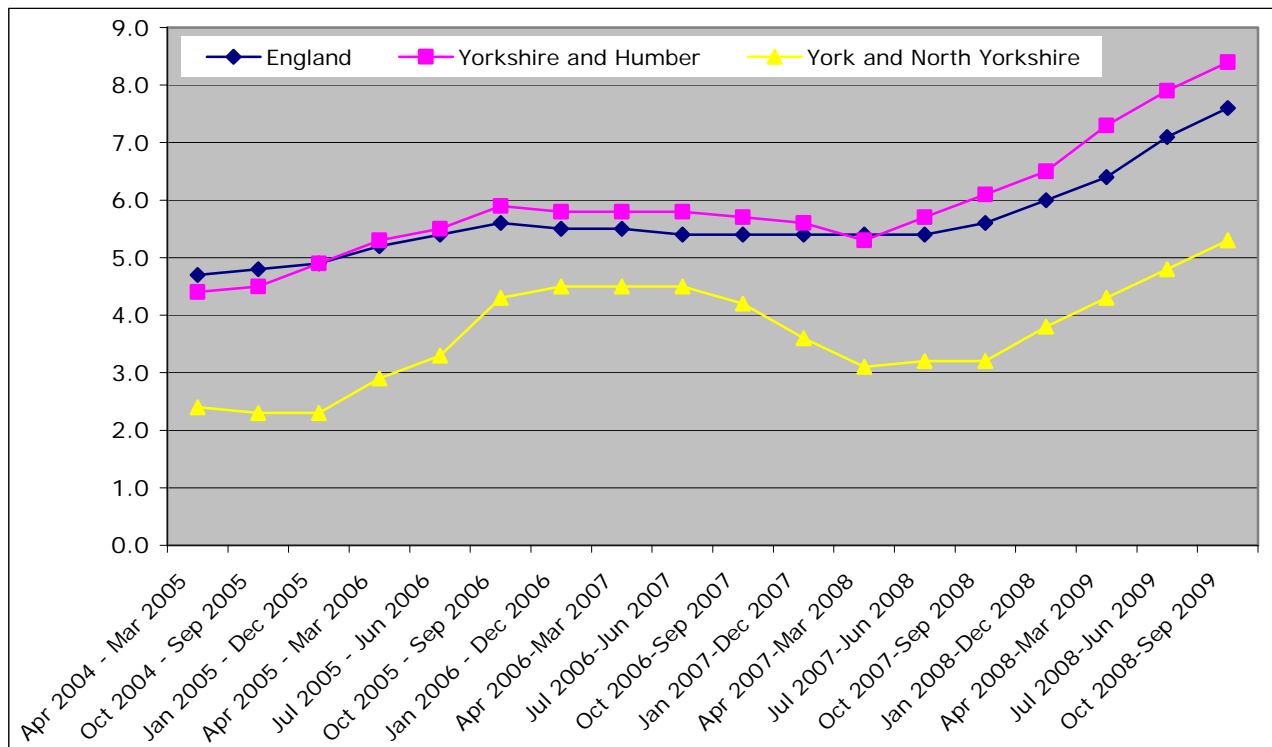
Working age unemployment rate

	Oct 2008 - Sep 2009	Change on previous quarter	Change on previous year
England	7.6	0.5	2.0
Yorkshire and Humber	8.4	0.5	2.3
York and North Yorkshire	5.3	0.5	2.1

Source: Annual Population Survey

N.B. Data is either disclosive or confidence intervals are unreliable at District level.

Working Age Unemployment Rate



Source: Annual Population Survey

Business Activity

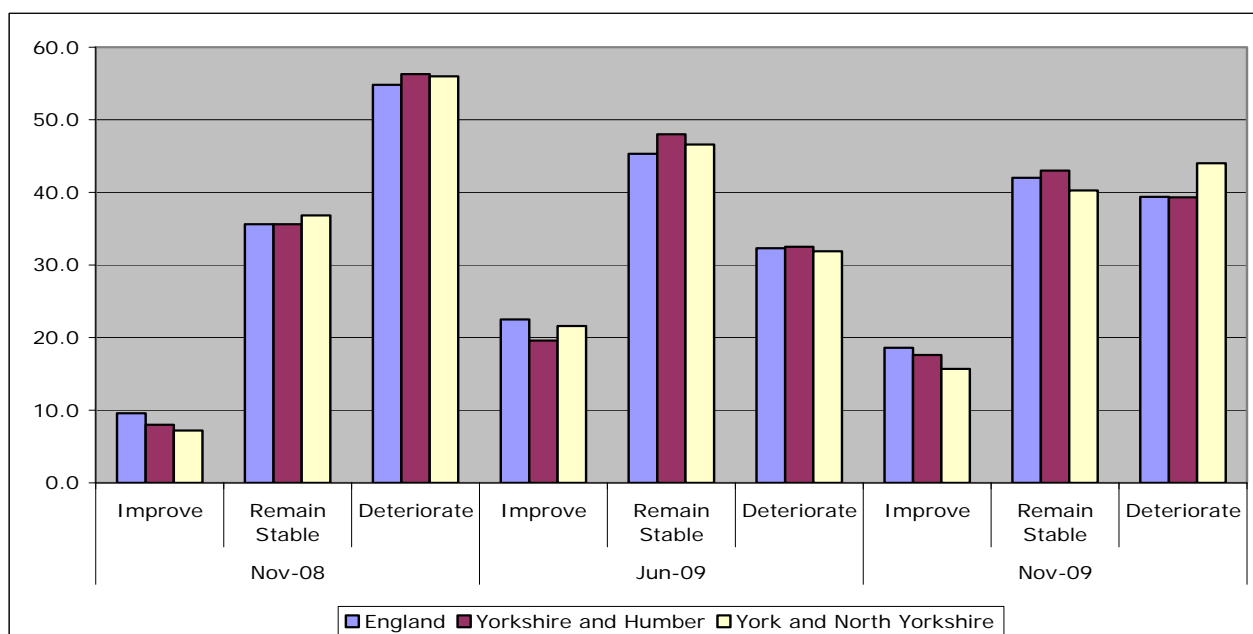
Business Confidence

The National Business Survey is a large scale research project conducted by Ipsos Mori on behalf of the RDA Network and Invest Northern Ireland. It explores perceptions of businesses across England and Northern Ireland, on current and recent business conditions as well as looking forward to potential issues and views on projected change over the coming months. The survey asks a series of questions on business confidence, a number of which are presented here.

Over the next 12 months do you expect the business climate in which your business operates to generally improve, remain stable, or deteriorate?

	Nov-08			Jun-09			Nov-09		
	Improve	Remain Stable	Deteriorate	Improve	Remain Stable	Deteriorate	Improve	Remain Stable	Deteriorate
England	9.6	35.6	54.8	22.5	45.3	32.3	18.6%	42.0%	39.4%
Yorkshire and Humber	8.0	35.6	56.3	19.6	48.0	32.5	17.6%	43.0%	39.3%
York and North Yorkshire	7.2	36.8	56.0	21.6	46.6	31.9	15.7%	40.3%	44.0%

Source: 'National Business Survey, November 2009, (Ipsos Mori on behalf of England's Regional Development Agencies and Invest Northern Ireland)'

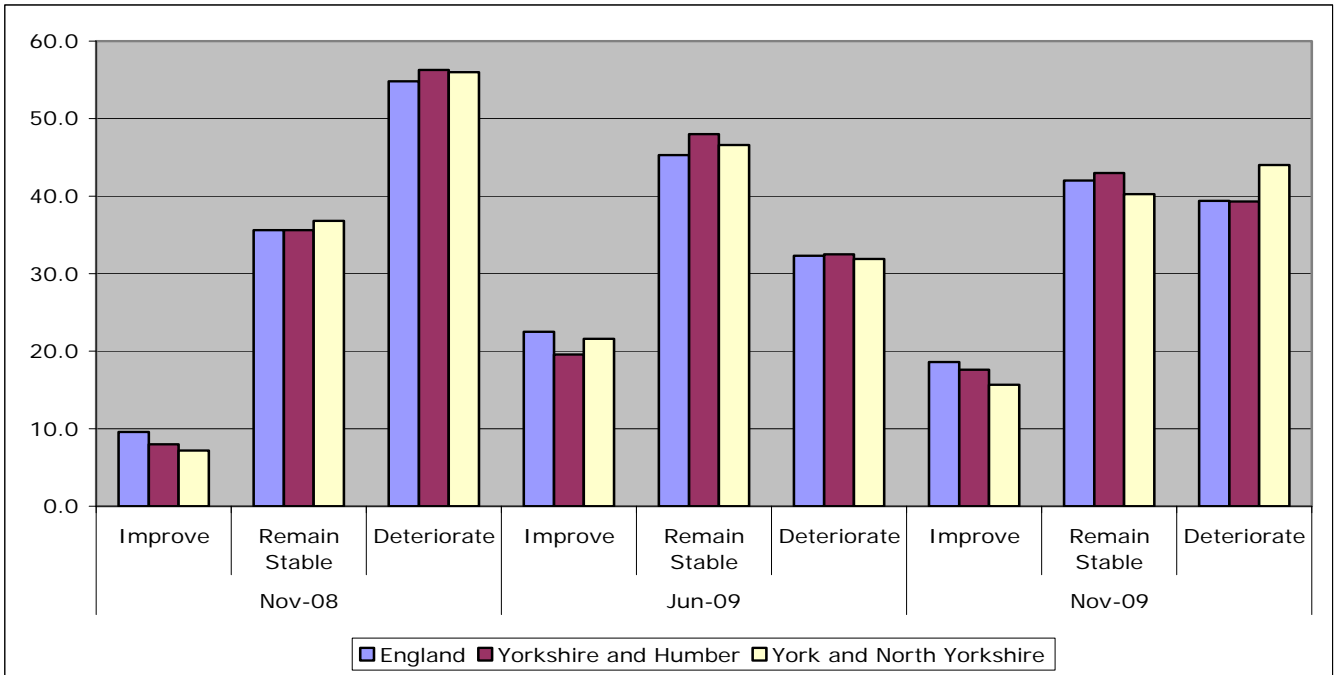


Source: 'National Business Survey, November 2009, (Ipsos Mori on behalf of England's Regional Development Agencies and Invest Northern Ireland)'

What has been the trend in the last 12 months with regard to numbers employed?

	Nov-08				Jun-09				Nov-09			
	Higher	Same	Lower	n/a	Higher	Same	Lower	n/a	Higher	Same	Lower	n/a
England	11.9	49.1	22.3	16.7	9.0	46.4	32.2	12.4	12.6%	46.5%	25.6%	15.3%
Yorkshire and Humber	13.4	46.9	24.4	15.2	7.1	44.5	29.8	18.6	16.3%	50.7%	19.2%	13.8%
York and North Yorkshire	12.8	43.9	20.0	23.3	6.3	50.9	24.3	18.5	14.5%	48.6%	22.4%	14.6%

Source: 'National Business Survey, June 2009, (Ipsos Mori on behalf of England's Regional Development Agencies and Invest Northern Ireland)'



Source: 'National Business Survey, November 2009, (Ipsos Mori on behalf of England's Regional Development Agencies and Invest Northern Ireland)'

N.B. The National Business Survey data is a sample and subject to some survey error. Sample sizes are smaller at more local levels therefore the confidence intervals are higher. Sample size can vary over the different time periods.

New Businesses

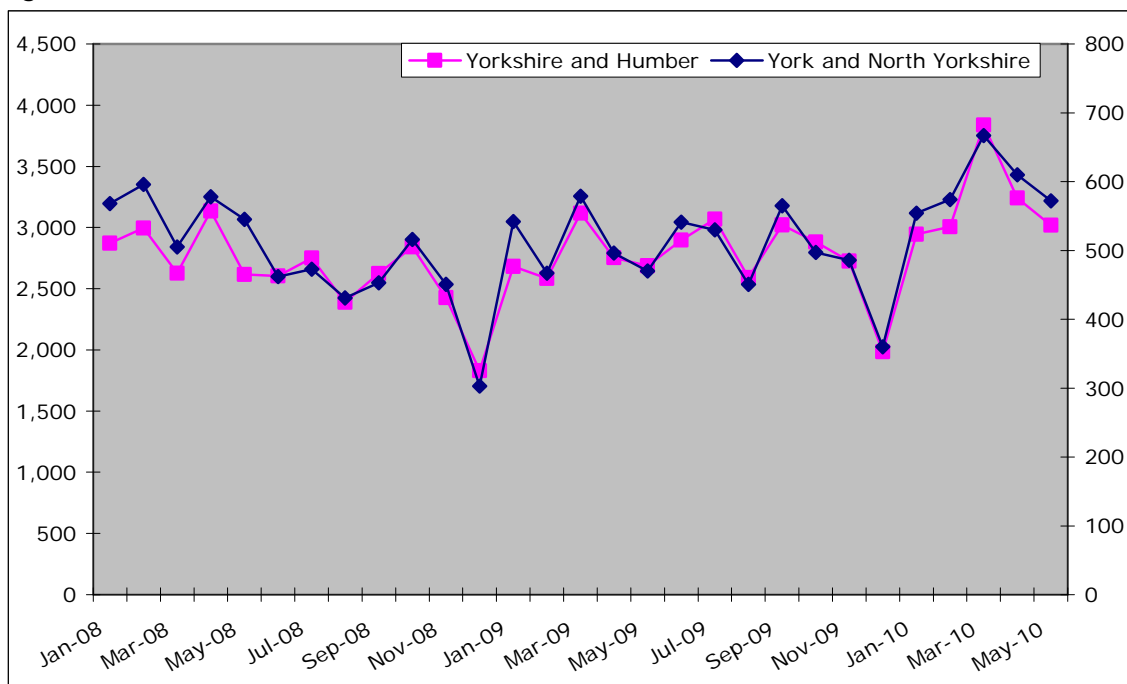
Information from the BankSearch Start up Interactive Database (IADB) provides a proxy to the number of new businesses being created in the sub region. The database provides information from Barclays, Co-Operative Bank, HSBC, Lloyds Banking Group, Royal Bank of Scotland and Santander. A 'Start-up' reflects the opening of a first current account from a small business banking product range. They represent businesses new to banking or those previously operated through a personal account. The data exclude businesses operating through personal accounts, those without banking relationships or those banking with other institutions. A small business is defined as having, or expected to have, annual debit turnover (i.e. outward payments from their accounts) of up to £1m per annum.

Number of new bank accounts

	May 2010	Monthly Change	Annual Change
England	38,105	-2,620 -6.4%	4,289 12.7%
Yorkshire and Humber	3,019	-222 -6.8%	332 12.4%
York and North Yorkshire	572	-38 -6.2%	102 21.7%
North Yorkshire	457	-30 -6.2%	82 21.9%
York	115	-8 -6.5%	20 21.1%
Craven	42	-3 -6.7%	3 7.7%
Hambleton	59	-31 -34.4%	-14 -19.2%
Harrogate	133	-13 -8.9%	23 20.9%
Richmondshire	43	6 16.2%	22 104.8%
Ryedale	41	4 10.8%	15 57.7%
Scarborough	81	-1 -1.2%	26 47.3%
Selby	58	8 16.0%	7 13.7%

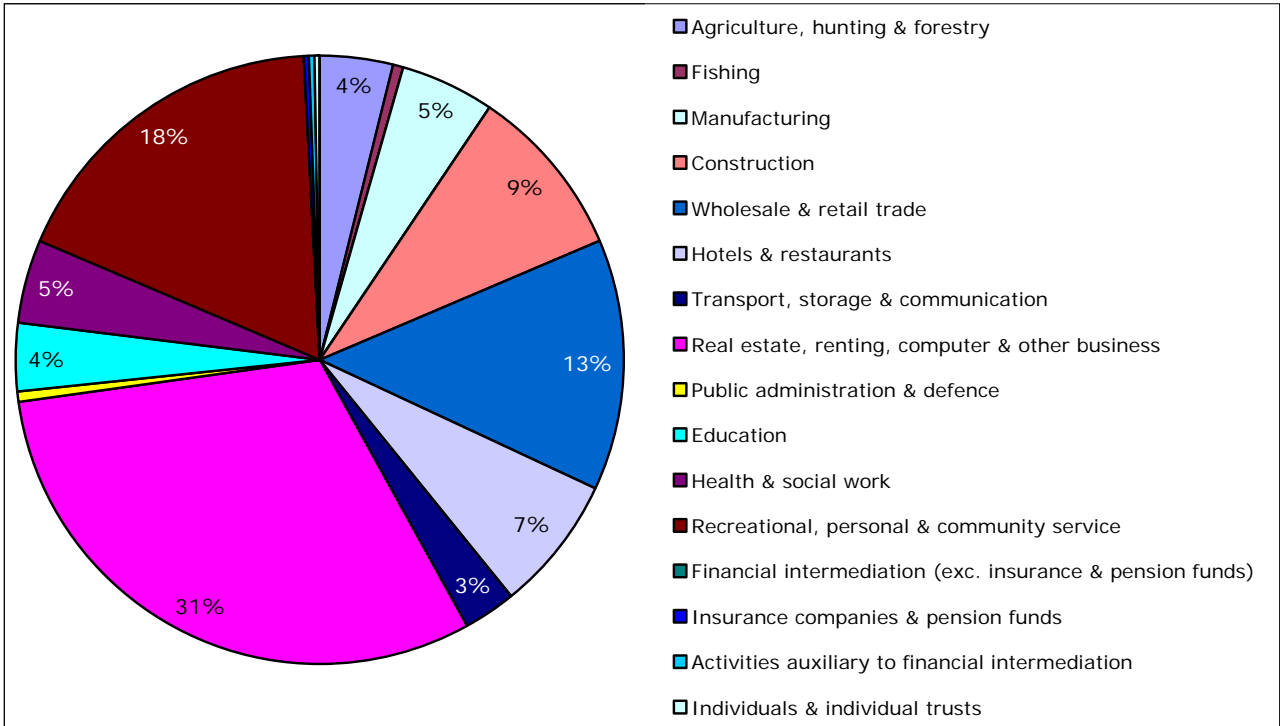
Source: BankSearch February 2010

Figure: Number of new bank accounts



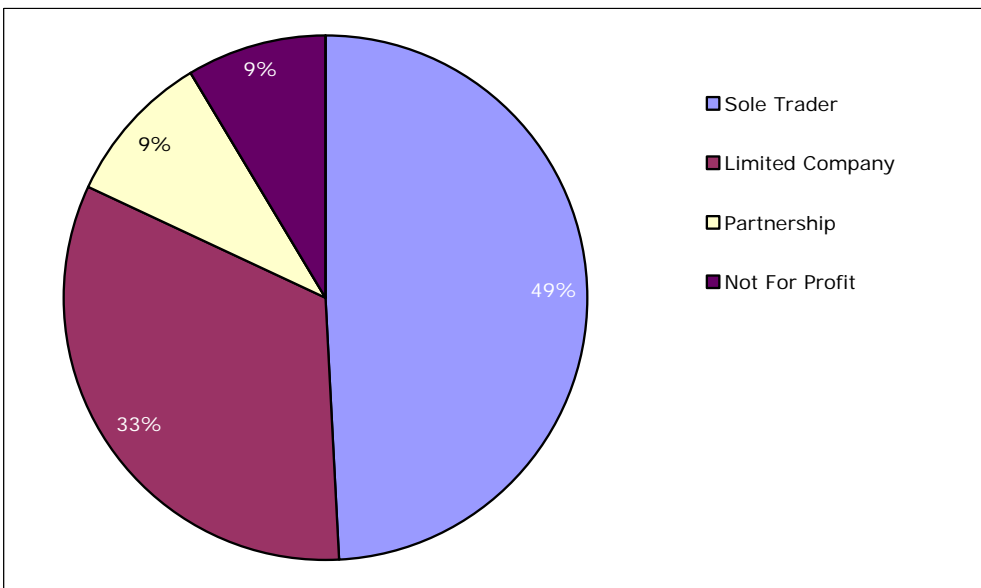
Source: BankSearch Ltd

New bank accounts by industry



Source: BankSearch Ltd

New bank accounts by legal status



Source: BankSearch Ltd

Housing

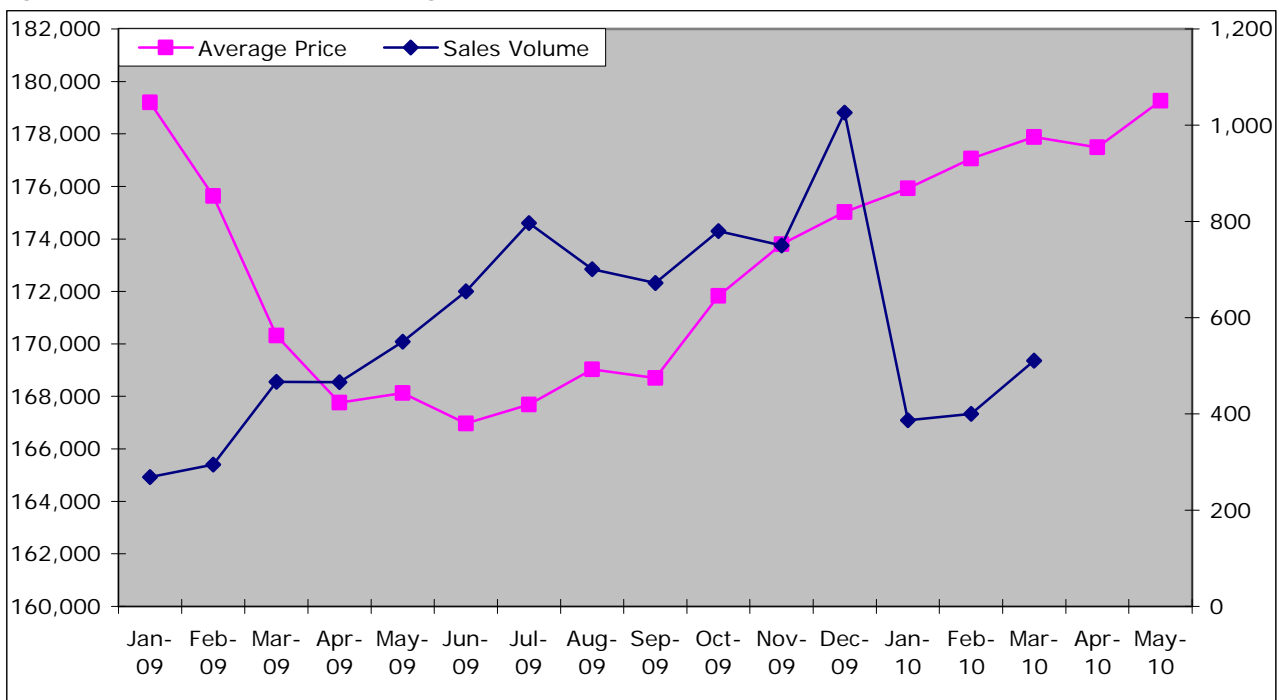
Land Registry House Price Index

North Yorkshire

	Index	Average Price	Monthly Change	Annual Change	Sales Volume
Jan-09	263.8	179,202	-1.0	-10.5	269
Feb-09	258.6	175,631	-2.0	-11.9	295
Mar-09	250.8	170,311	-3.0	-14.6	467
Apr-09	247.0	167,757	-1.5	-14.4	466
May-09	247.5	168,123	0.2	-14.3	550
Jun-09	245.8	166,966	-0.7	-14.1	655
Jul-09	246.9	167,689	0.4	-13.2	797
Aug-09	248.9	169,036	0.8	-12.1	701
Sep-09	248.4	168,701	-0.2	-10.6	672
Oct-09	253.0	171,830	1.9	-7.8	780
Nov-09	255.9	173,795	1.1	-5.5	750
Dec-09	257.7	175,017	0.7	-3.4	1,026
Jan-10	259.0	175,930	0.5	-1.8	387
Feb-10	260.7	177,064	0.6	0.8	400
Mar-10	261.9	177,882	0.5	4.4	511
Apr-10	261.3	177,492	-0.2	5.8	-
May-10	263.9	179,264	1.0	6.6	-

Source: Land Registry, House Price Index
 - Data not available

Figure: North Yorkshire – Average Price & Sales Volume



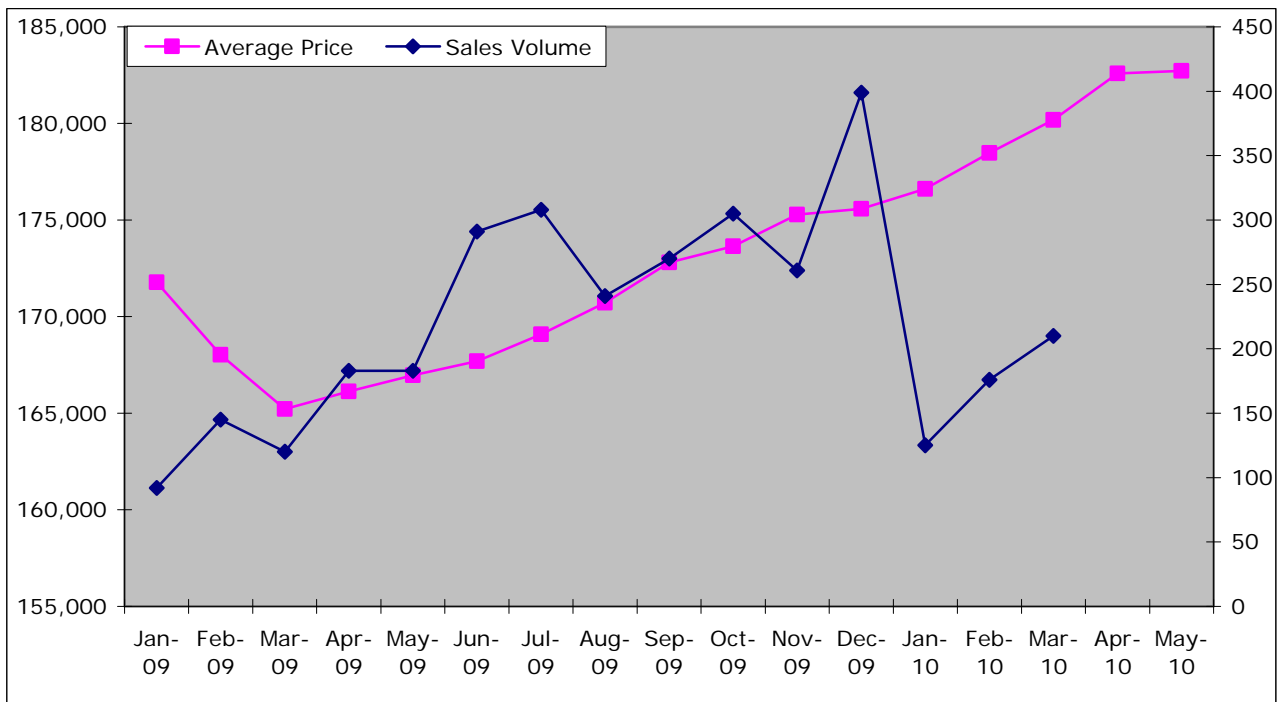
Source: Land Registry, House Price Index

York – Average Price & Sales Volume

	Index	Average Price	Monthly Change	Annual Change	Sales Volume
Jan-09	264.2	171,775	-0.2	-10.9	92
Feb-09	258.4	168,019	-2.2	-13.2	145
Mar-09	254.1	165,224	-1.7	-14.5	120
Apr-09	255.5	166,123	0.5	-13.9	183
May-09	256.8	166,962	0.5	-13.1	183
Jun-09	257.9	167,683	0.4	-11.5	291
Jul-09	260.1	169,088	0.8	-10.6	308
Aug-09	262.6	170,718	1.0	-8.9	241
Sep-09	265.8	172,802	1.2	-4.7	270
Oct-09	267.1	173,634	0.5	-2.7	305
Nov-09	269.6	175,279	0.9	-0.6	261
Dec-09	270.1	175,582	0.2	2.0	399
Jan-10	271.7	176,614	0.6	2.8	125
Feb-10	274.5	178,465	1.0	6.2	176
Mar-10	277.2	180,185	1.0	9.1	210
Apr-10	280.9	182,591	1.3	9.9	-
May-10	281.1	182,727	0.1	9.4	-

Source: Land Registry, House Price Index
 - Data not available

Figure: York – Average Price & Sales Volume



Source: Land Registry, House Price Index

Mean House Prices

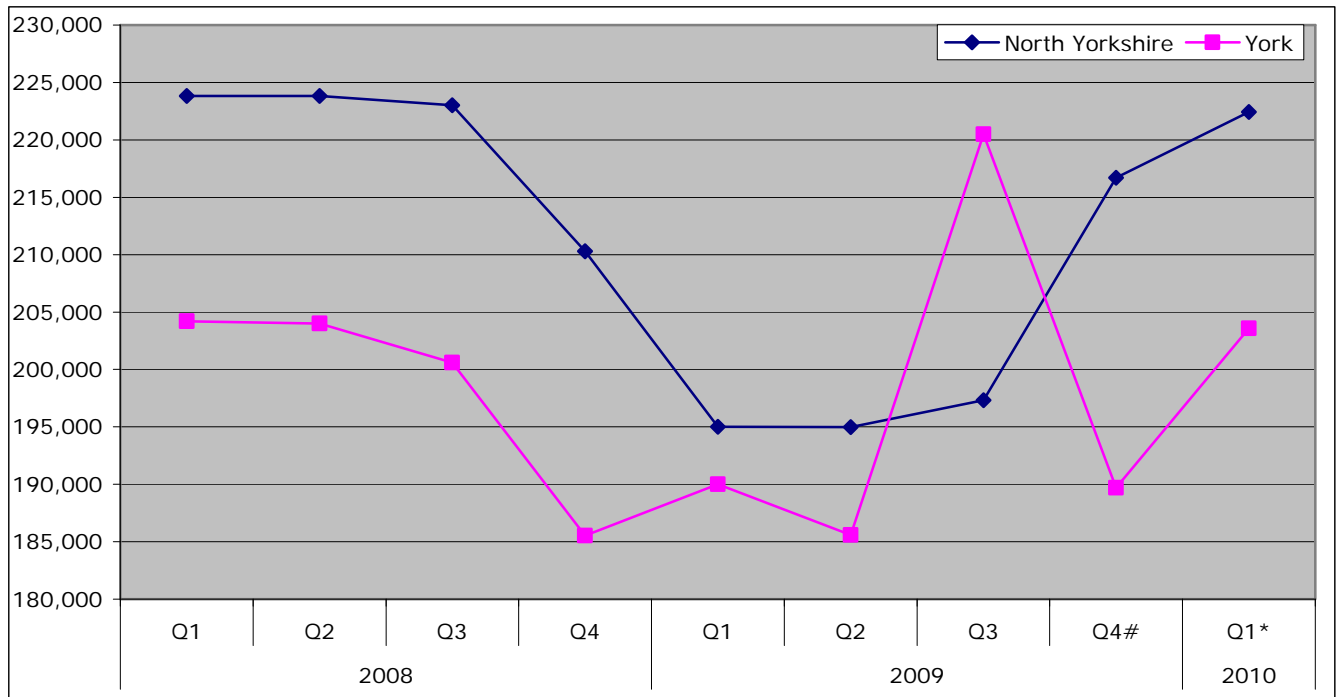
	Quarter 1 2010*	Change on previous quarter		Change on previous year	
England	238,341	£16,262	7.3%	£37,802	18.9%
Yorkshire & Humber	158,069	-£3,090	-1.9%	£17,217	12.2%
York & North Yorkshire	216,312	£5,764	2.7%	£24,380	12.7%
North Yorkshire	222,428	£5,741	2.6%	£27,409	14.1%
York	203,587	£13,896	7.3%	£13,593	7.2%
Craven	226,734	£24,387	12.1%	£58,367	34.7%
Hambleton	228,457	-£4,803	-2.1%	£31,048	15.7%
Harrogate	275,181	£15,740	6.1%	£35,208	14.7%
Richmondshire	238,311	£10,010	4.4%	£29,801	14.3%
Ryedale	211,327	-£2,674	-1.2%	£1,174	0.6%
Scarborough	161,251	-£8,440	-5.0%	£10,494	7.0%
Selby	185,646	-£2,005	-1.1%	£15,358	9.0%

Source: DCLG

Data has been revised

* Data is provisional

Figure: Mean House Prices, North Yorkshire and York



Source: DCLG

Data has been revised

* Data is provisional

Property Sales

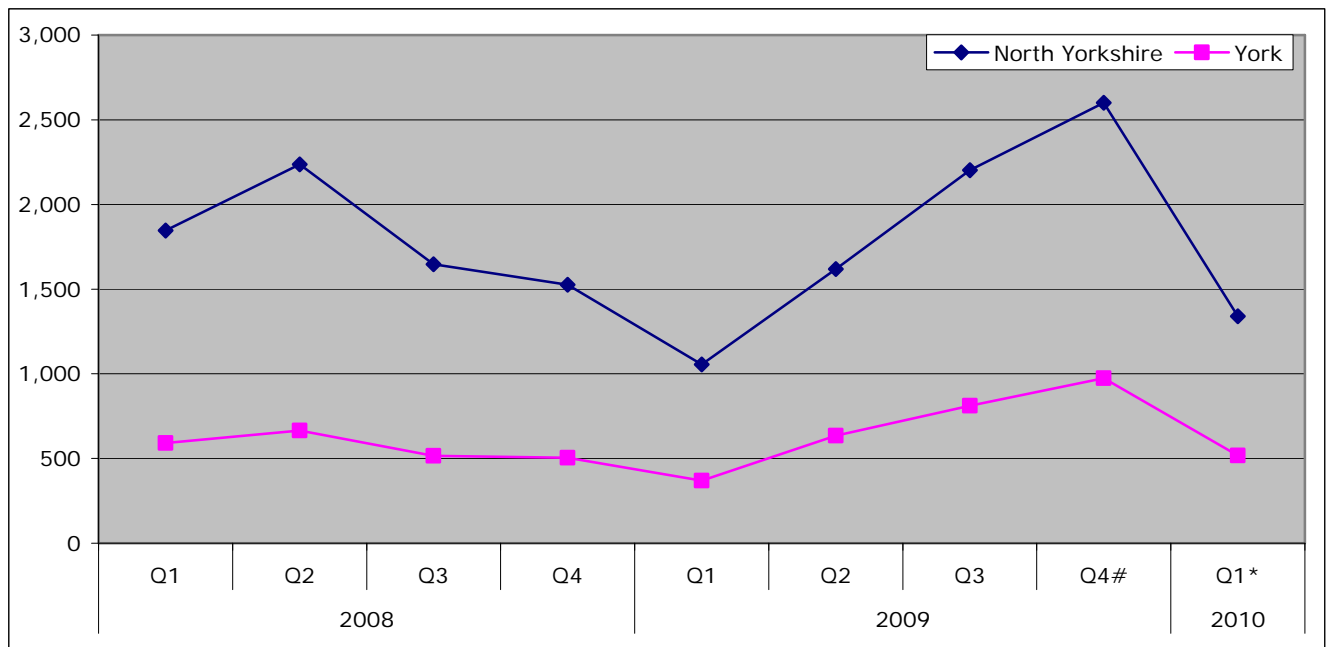
	Quarter 1 2010*	Change on previous quarter		Change on previous year	
England	121,558	-74,681	-38.1%	34,269	39.3%
Yorkshire & Humber	10,390	-6,871	-39.8%	1,853	21.7%
York & North Yorkshire	1,858	-1,717	-48.0%	434	30.5%
North Yorkshire	1,340	-1,261	-48.5%	285	27.0%
York	518	-456	-46.8%	149	40.4%
Craven	139	-108	-43.7%	47	51.1%
Hambleton	176	-180	-50.6%	31	21.4%
Harrogate	403	-328	-44.9%	87	27.5%
Richmondshire	66	-98	-59.8%	5	8.2%
Ryedale	111	-96	-46.4%	44	65.7%
Scarborough	261	-237	-47.6%	21	8.8%
Selby	184	-214	-53.8%	50	37.3%

Source: DCLG

Data has been revised

* Data is provisional

Figure: Number of Property Sales, North Yorkshire and York



Source: DCLG

Data has been revised

* Data is provisional

Mortgage and Landlord Possession Claims/Orders

The following data indicates the number of claims/orders that have been issued at County Court level for possession of properties either under mortgage or landlord possession.

N.B. Important note - Introduction of Mortgage Pre-Action Protocol (MPAP) on 19 November 2008.

A new mortgage pre action protocol (MPAP), was introduced for possession claims in the County Courts with effect from 19 November 2008.

Evidence from administrative records from October to December 2008 suggests that this date coincided with a fall of around 50% in the daily and weekly numbers of new mortgage repossession claims being issued in the courts. It therefore seems highly likely that the launch of the MPAP has led to a marked fall in the number of new claims being issued during the latter part of the period covered by this bulletin. However, given the apparent cause, users should exercise caution in drawing broader inferences from the fall in mortgage possession claims issued in Q4 2008.

Mortgage possession orders are typically made around 8 weeks after the corresponding claims are issued. For this reason, the impact of the MPAP is expected to occur during the early months of 2009. At this early stage is not clear to what extent the launch of the MPAP has led to a permanent fall in the numbers of new mortgage possession claims being issued, as opposed to some merely being postponed. This will become clearer as statistics for 2009 are published.

Mortgage Possession Claims Issued

	Q2 2008	Q3 2008	Q4 2008	Q1 2009	Q2 2009	Q3 2009	Q4 2009	Q1 2010	% change since Q1 2009	% change since Q4 2009
Yorkshire & Humber	3,928	3,962	2,669	2,476	2,760	2,820	1,990	2,065	-16.6%	3.8%
York & North Yorkshire	337	358	258	237	245	230	220	170	-28.3%	-22.7%
Harrogate	56	44	45	40	45	50	40	35	-12.5%	-12.5%
Scarborough	97	138	93	78	80	65	60	55	-29.5%	-8.3%
Skipton	41	29	20	24	25	25	25	15	-37.5%	-40.0%
York	143	147	100	95	95	90	70	65	-31.6%	-7.1%

Source: Ministry of Justice

Mortgage Possession Orders Issued

	Q2 2008	Q3 2008	Q4 2008	Q1 2009	Q2 2009	Q3 2009	Q4 2009	Q1 2010	% change since Q1 2009	% change since Q4 2009
Yorkshire & Humber	-	-	-	1,821	1,920	2,325	1,875	1,635	-10.2%	-12.8%
York & North Yorkshire	-	-	-	152	160	195	175	130	-14.5%	-25.7%
Harrogate	-	-	-	30	25	40	30	25	-16.7%	-16.7%
Scarborough	80	116	113	57	45	65	35	40	-29.8%	14.3%
Skipton	32	31	27	15	20	15	15	15	0.0%	0.0%
York	106	93	123	50	70	75	55	50	0.0%	-9.1%

Source: Ministry of Justice

Landlord Possession Claims issued

	Q2 2008	Q3 2008	Q4 2008	Q1 2009	Q2 2009	Q3 2009	Q4 2009	Q1 2010	% change since Q1 2009	% change since Q4 2009
Yorkshire & Humber	2,656	2,434	2,438	2,370	2,340	2,215	2,205	2,255	-4.9%	2.3%
York & North Yorkshire	252	288	266	232	240	210	250	245	5.6%	-2.0%
Harrogate	48	56	40	33	40	35	25	30	-9.1%	20.0%
Scarborough	64	81	85	60	75	65	65	65	8.3%	0.0%
Skipton	8	16	18	12	10	10	10	15	25.0%	50.0%
York	132	135	123	127	115	100	100	120	-5.5%	20.0%

Source: Ministry of Justice

Landlord Possession Orders issued

	Q2 2008	Q3 2008	Q4 2008	Q1 2009	Q2 2009	Q3 2009	Q4 2009	Q1 2010	% change since Q1 2009	% change since Q4 2009
Yorkshire & Humber	-	-	-	2,403	1,660	1,815	1,725	1,650	-31.3%	-4.3%
York & North Yorkshire	-	-	-	233	-	190	220	145	-37.8%	-34.1%
Harrogate	-	-	-	44	20	35	25	15	-65.9%	-40.0%
Scarborough	52	69	75	70	30	70	55	60	-14.3%	9.1%
Skipton	5	13	12	12	*	15	10	10	-16.7%	-
York	75	106	116	107	95	70	90	65	-39.3%	-27.8%

Source: Ministry of Justice

* The figure is not provided as the number of claims leading to an order made is either 7 or less, or if it is a % change where there are fewer than 30 observations in the base period

Planning

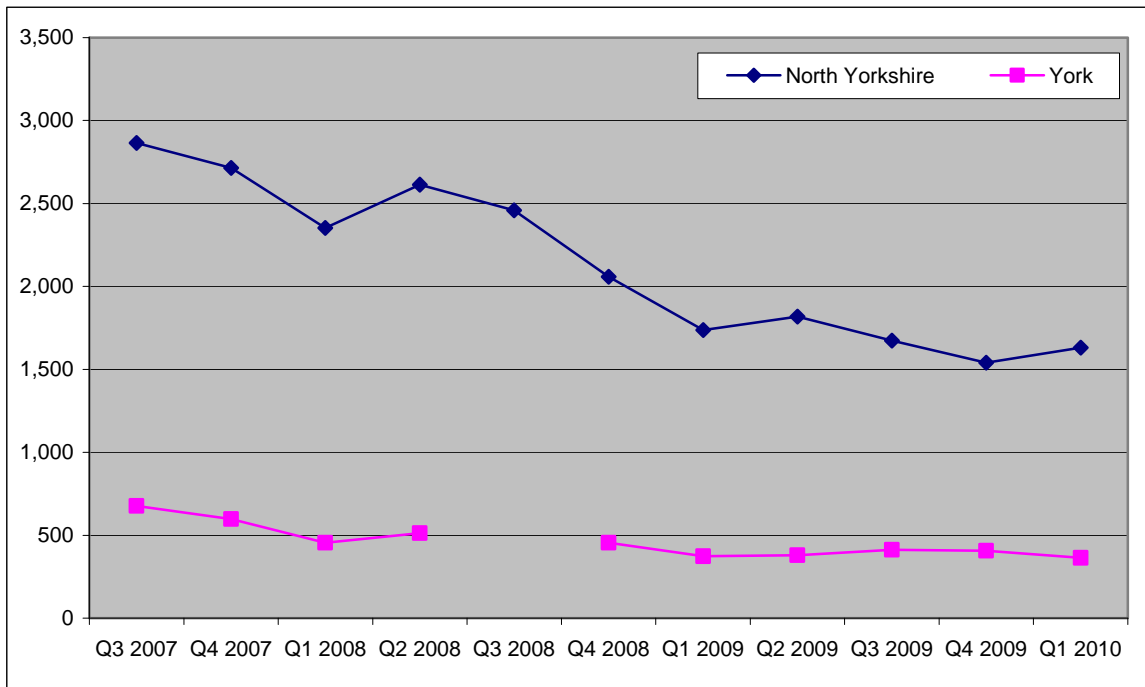
Total Planning Decisions

	Quarter 1 2010*	Change on previous quarter		Change on previous year	
England	95,700	-9,620	-9.1	2,600	2.8
Yorkshire and Humber	7,531	-922	-10.9	-269	-3.4
York and North Yorkshire	1,994	46	2.4	-117	-5.5
North Yorkshire	1,631	90	5.8	-106	-6.1
York	363	-44	-10.8	-11	-2.9
Craven	118	-16	-11.9	-3	-2.5
Hambleton	238	-33	-12.2	-40	-14.4
Harrogate	473	21	4.6	12	2.6
Richmondshire	104	-40	-27.8	-34	-24.6
Ryedale	141	-27	-16.1	-14	-9.0
Scarborough	164	-42	-20.4	-1	-0.6
Selby	155	-11	-6.6	-13	-7.7
North York Moors	124	-43	-25.7	-19	-13.3
Yorkshire Dales	114	-	-	6	5.6

Source: Statistics of Planning Decisions, CLG

- Data cannot be calculated

Total Planning Decisions, North Yorkshire/York



Source: Statistics of Planning Decisions, CLG

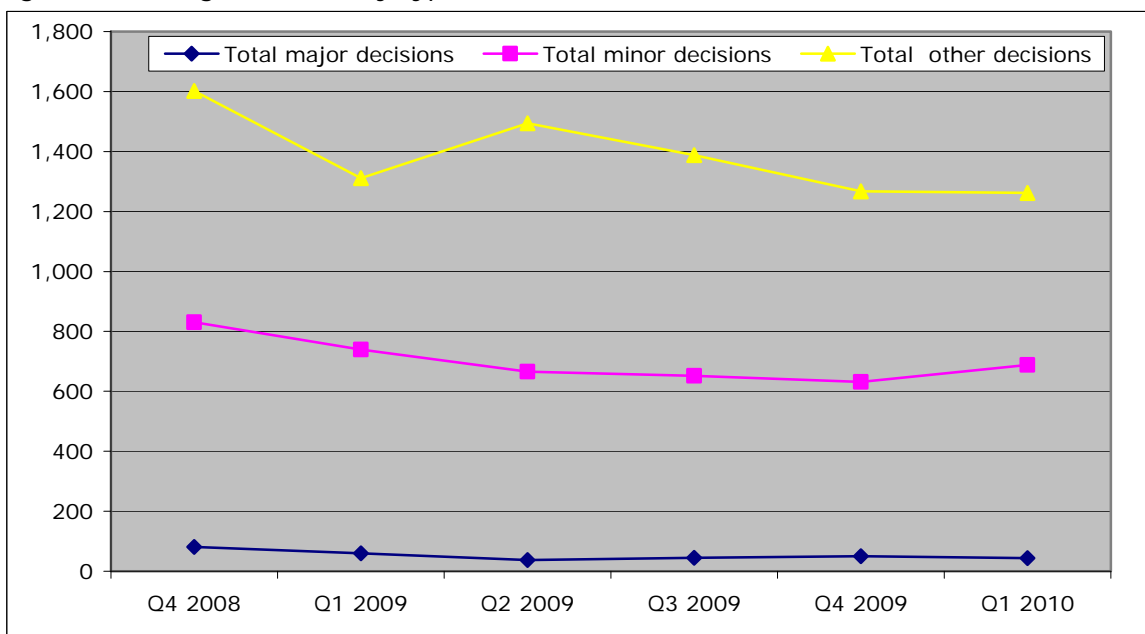
N.B. The number of decisions made in Q3 2008 is not available and therefore excluded from the chart. The figure for North Yorkshire for Q2 2009 does not include data for Craven

Breakdown of planning decisions by type in York and North Yorkshire

	Q1 2010	Change on previous quarter		Change on previous year	
Total major decisions	44	-6	-12.0%	-16	-26.7%
Total minor decisions	688	57	9.0%	-52	-7.0%
Total other decisions	1,262	-5	-0.4%	-49	-3.7%
Total	1,994	46	2.4%	-117	-5.5%

Source: Statistics of Planning Decisions, CLG

Figure: Planning Decisions by type, York and North Yorkshire



Source: Statistics of Planning Decisions, CLG

N.B Figures shown for Q2 2009 does not include data for Craven

Tourism

Number of Visits to Leisure Attractions in York and North Yorkshire

	No of Attractions Responding	Total Previous Year	Total	% Change
Jul-08	54	621,521	600,900	-3%
Aug-08	56	832,091	843,934	1%
Sep-08	56	530,743	446,212	-16%
Oct-08	50	422,394	381,563	-10%
Nov-08	40	197,447	184,794	-6%
Dec-08	36	194,004	150,948	-22%
Jan-09	58	153,038	120,111	-22%
Feb-09	44	-	-	-16%
Mar-09	63	-	-	-11%
Apr-09	54	-	-	47%
May-09	54	-	-	11.1%
Jun-09	56			3.7%
Jul-09	57			7.2%

Source: Visitor Attraction Monitor, Yorkshire Tourist Board

Community and Voluntary Sector

Demand for CAB services

2009/10 Q3	Craven	Hambleton	Richmondshire	Ripon	Ryedale	Scarborough	Selby
Benefits	607	903	805	446	703	984	1,247
Debt	414	1598	1,016	113	826	1,732	1,432
Employment	224	291	252	111	129	286	1,128
Health & Community	38	34	26	25	16	43	29
Relationships & family	84	146	156	49	53	145	169
Total	1,367	2,972	2,255	744	1,727	3,190	4,005

Source: York and North Yorkshire Infrastructure Consortium.

N.B it is hoped CAB figures for York and Harrogate will be included next quarter. A new sub-regional figure is included in the main report.