

## National Picture

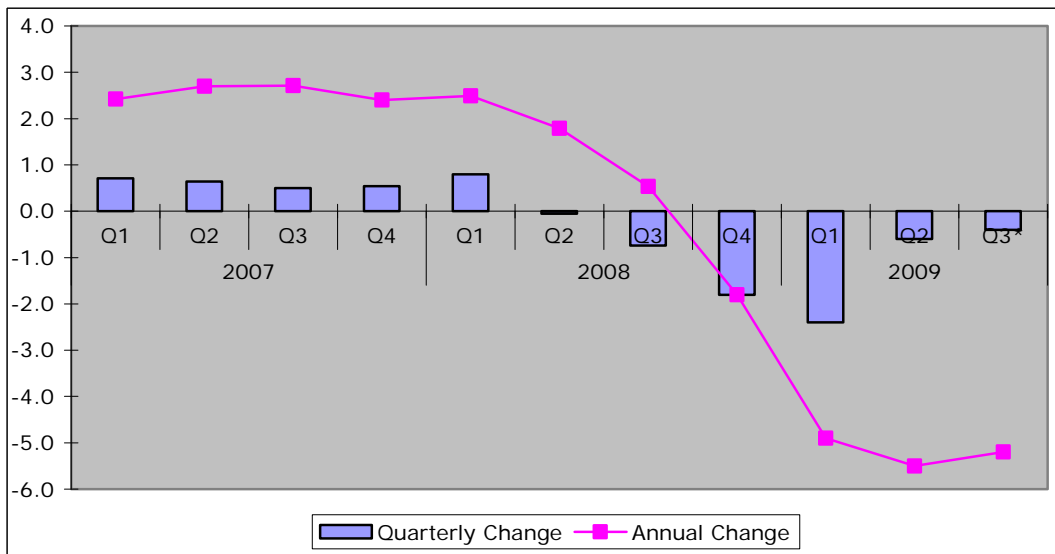
Key Indicators	August 2009	September 2009	Change
Inflation figures - CPI	1.6	1.1	-0.5
Inflation figures - RPI	-1.3	-1.4	-0.1
New Businesses - VAT Registrations	14,368	15,685	1,317 9.2%
VAT De-registrations	15,617	17,724	2,107 13.5%

Source:

ONS, UK Trade Info

- ◆ Provisional estimates suggest that GDP contracted by 0.4% in Q3 of 2009.

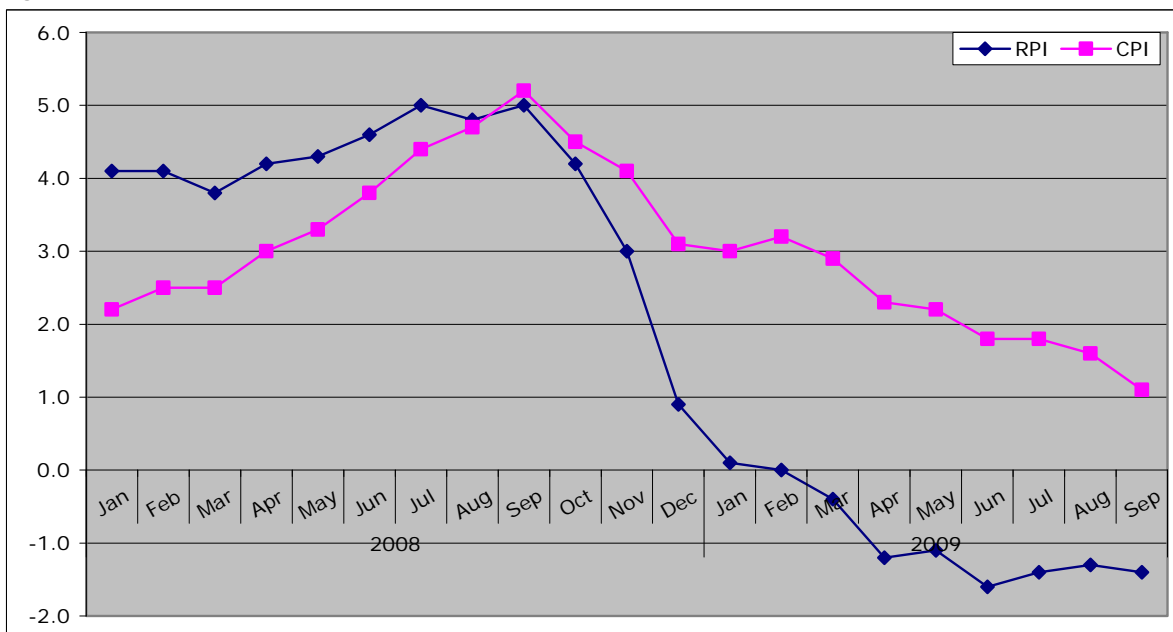
Figure: Change to GDP



Source: ONS

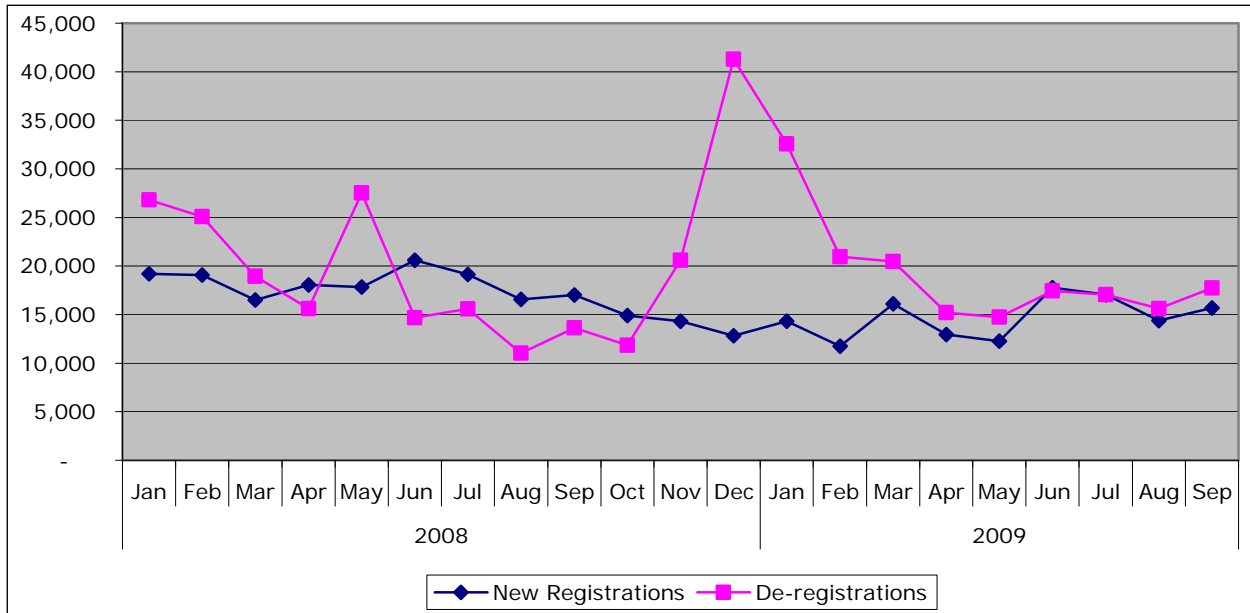
\* Data is provisional

Figure: Inflation Trends



Source: ONS

Figure 1: New Business Registrations and De-Registrations



Source

e: UK Trade Info

## Local Picture

### Employment

#### Job Gains/Losses

Confirmed Job losses - September 2009

Company	Location	No. jobs	Type of Service
AW Sinclair & Sons	Scarborough	-97	Construction
<b>Total</b>		<b>-97</b>	

Sour

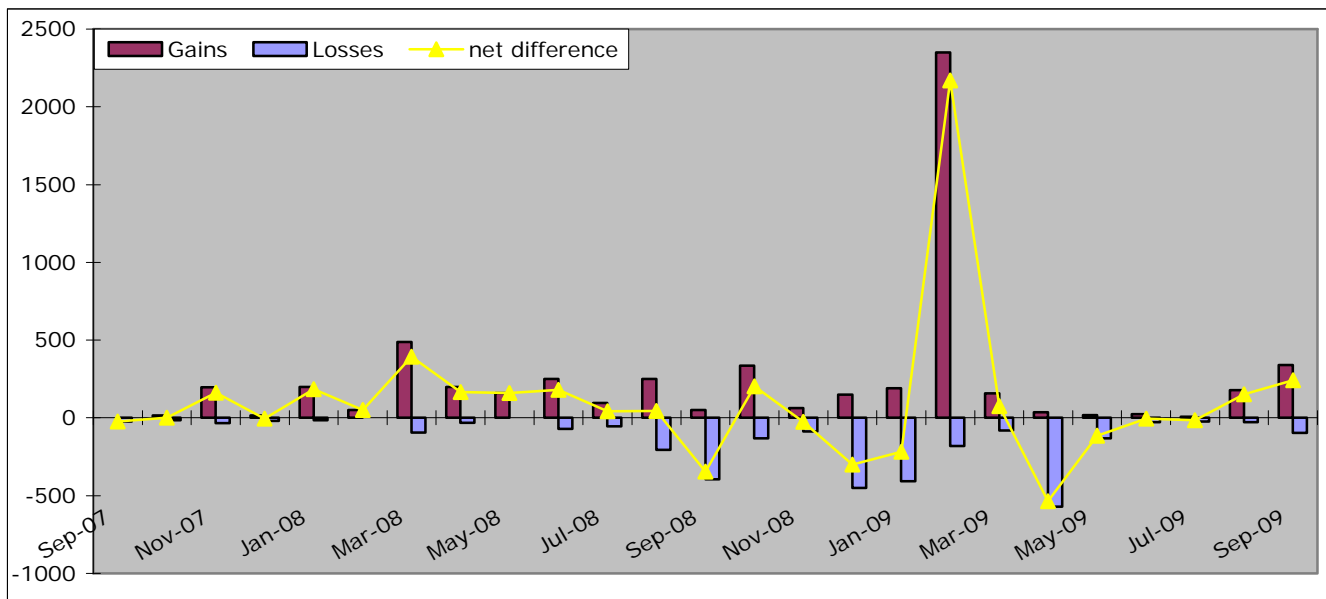
ce: Yorkshire Futures Monthly jobs database

Confirmed Job Gains - September 2009

Company	Location	No. Jobs	Type of Service
Debenhams	York	69	Distribution & Retail
Novotel Hotel	York	13	Hotels & Restaurants
CCI Distribution	Knaresborough	3	Transport & Communications
Pets at Home	York	13	Distribution & Retail
North Yorkshire County Council	North Yorkshire	190	Public Admin & Defence
Carter Jonas	Harrogate	2	Business Services
Dacre Son & Hartley	Harrogate	5	Business Services
Little Chef / Harpers Fish & Chips	Scarborough	25	Hotels & Restaurants
Next	Scarborough	20	Distribution & Retail
<b>Total</b>		<b>340</b>	

Source: Yorkshire Futures Monthly jobs database

Figure: Jobs/Gains and net difference



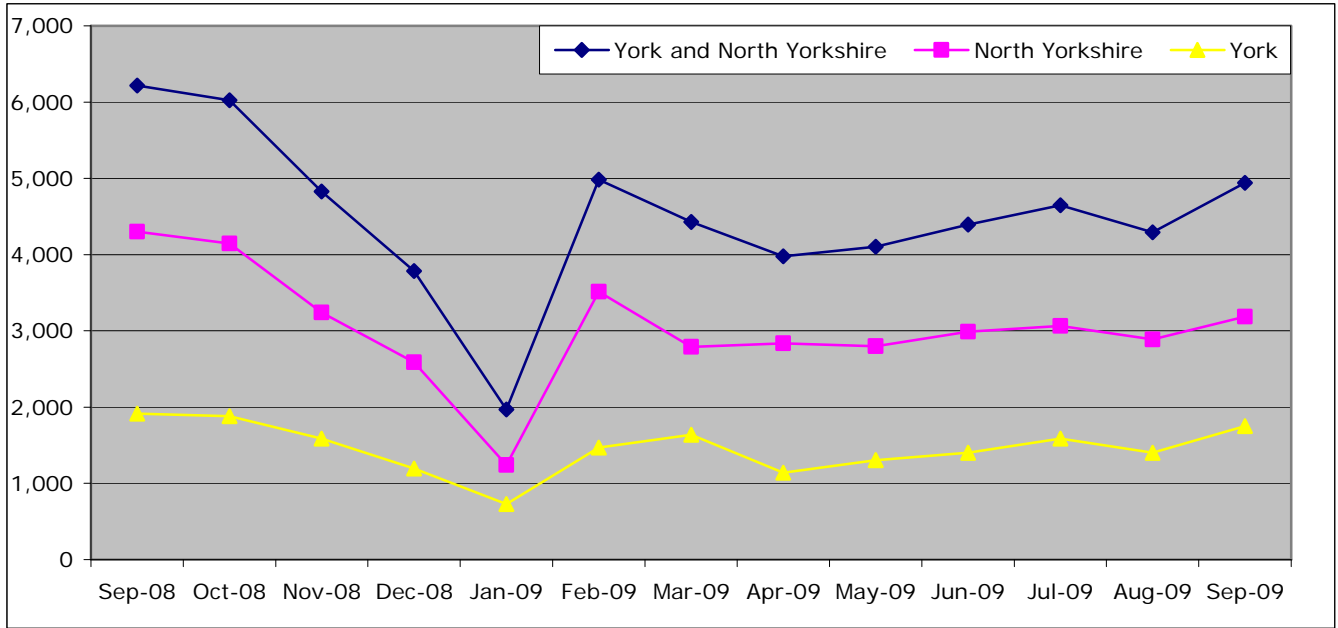
Source: Yorkshire Forward jobs database

### Job Centre Plus – notified job vacancies

	September 2009	Monthly Change		Annual Change	
England	270,973	13,537	5.3%	-54,442	-16.7%
Yorkshire and Humber	29,255	1,047	3.7%	-6,430	-18.0%
York and North Yorkshire	4,940	647	15.1%	-1,278	-20.6%
North Yorkshire	3,188	299	10.3%	-1,114	-25.9%
York	1,752	349	24.9%	-164	-8.6%
Craven	217	-33	-13.2%	-139	-39.0%
Hambleton	464	92	24.7%	-102	-18.0%
Harrogate	1,056	206	24.2%	-356	-25.2%
Richmondshire	218	65	42.5%	-9	-4.0%
Ryedale	141	-83	-37.1%	-257	-64.6%
Scarborough	491	-52	-9.6%	-109	-18.2%
Selby	602	104	20.9%	-141	-19.0%

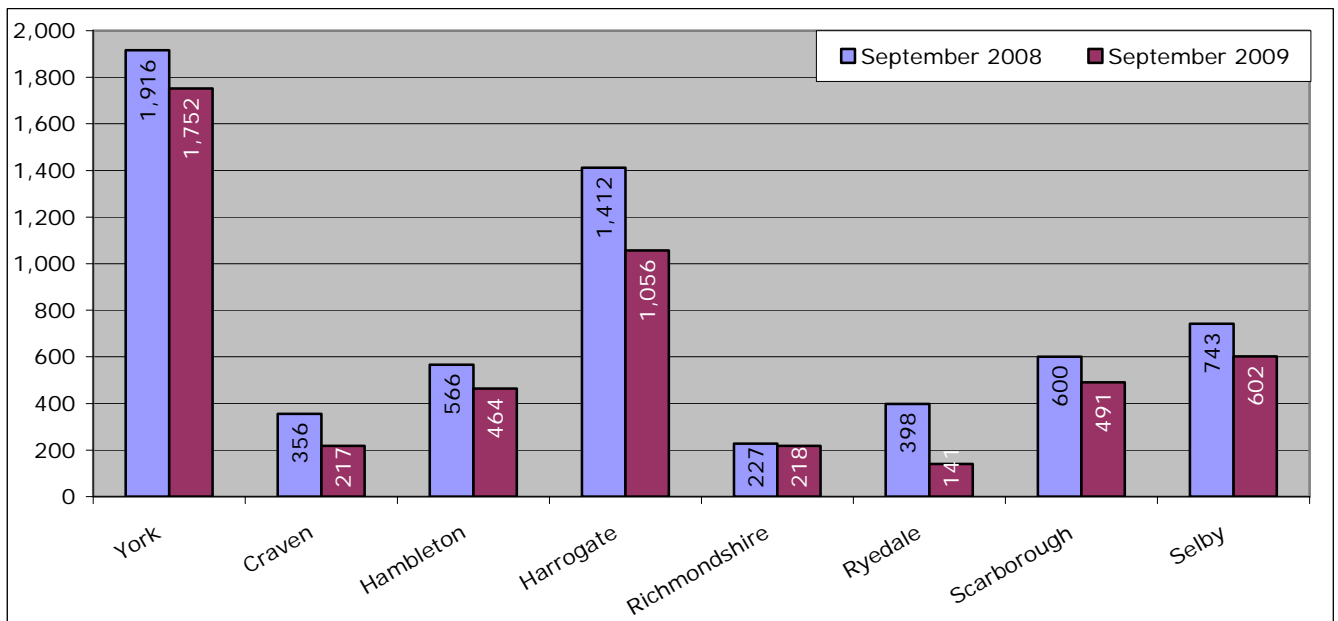
Source: Nomis

Figure: Number of vacancies trend



Source: Nomis

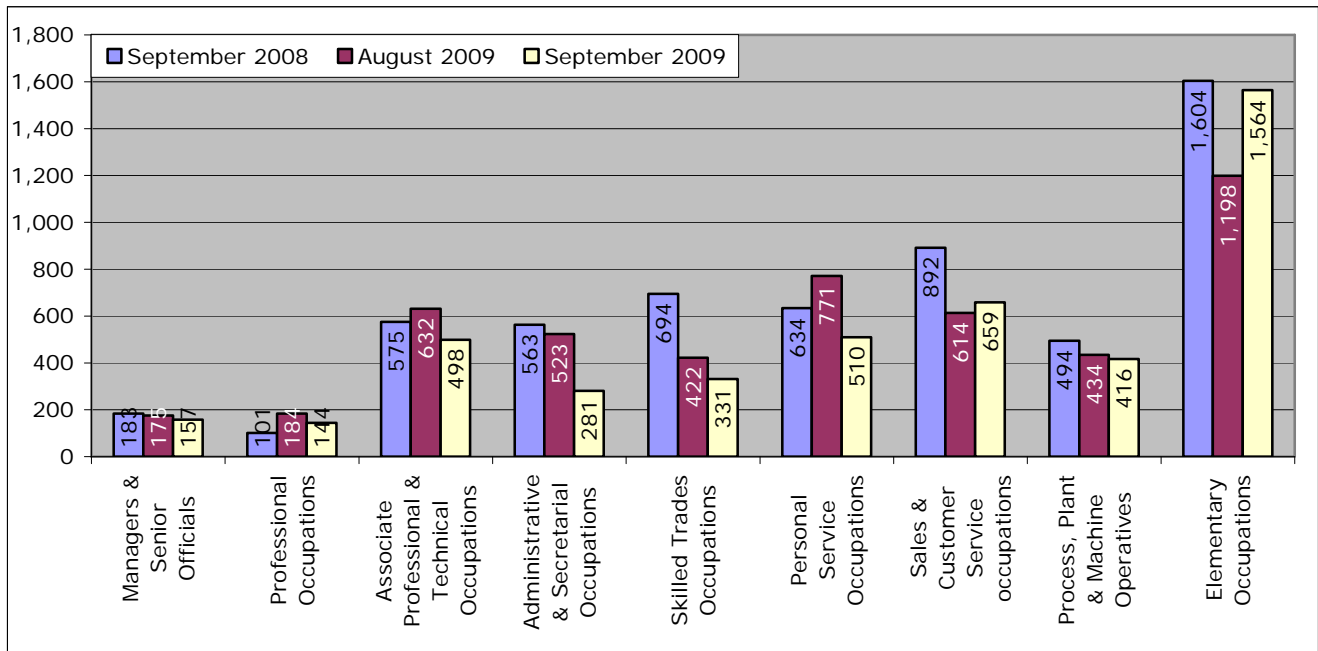
Figure: Number of Vacancies, Year on Year comparison



Source: Nomis

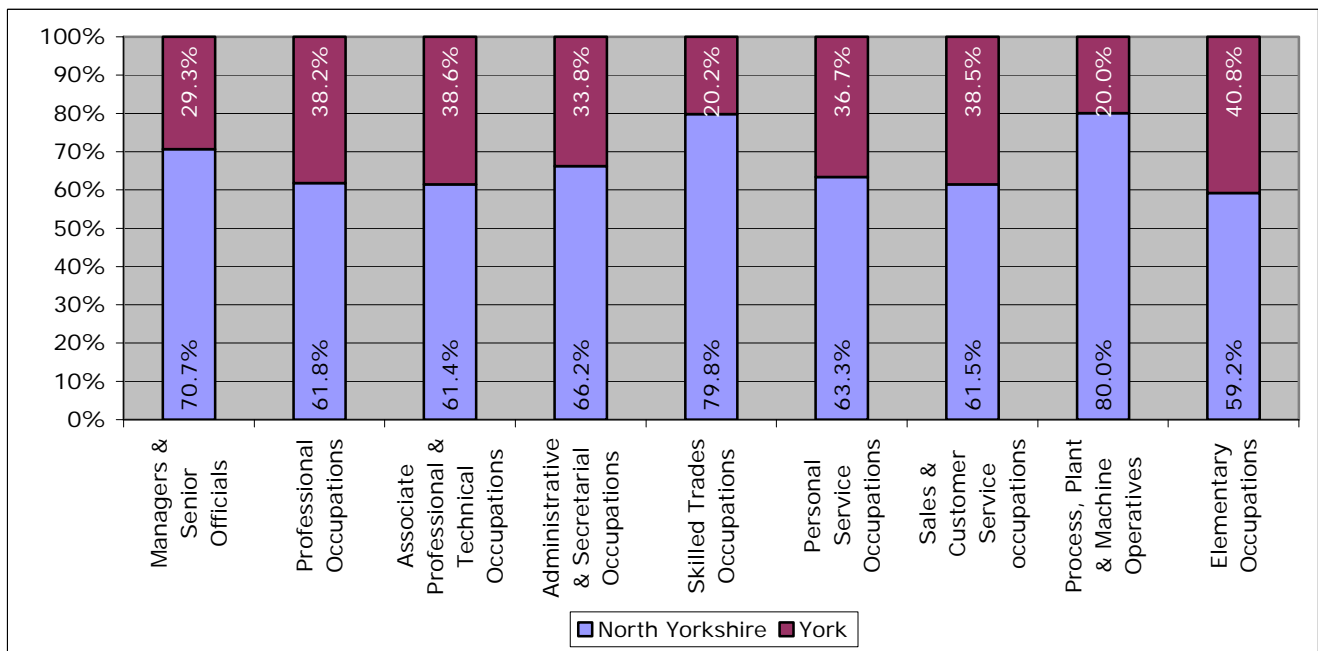
## Vacancies by Occupation

Figure: Share of vacancies by occupation, York and North Yorkshire, year on year comparison



Source: Nomis

Figure: Distribution of vacancies by occupation between North Yorkshire & York, August 2009



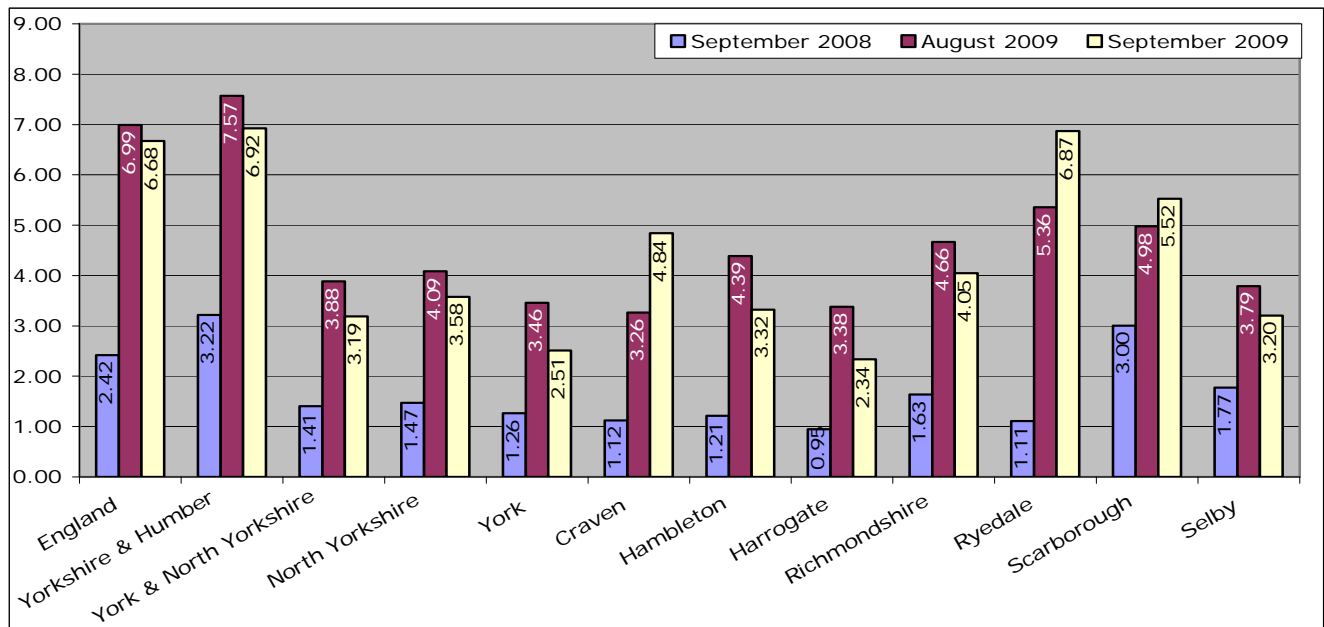
Source: Nomis

### Number of Claimants to Notified Vacancies ratio

	September 2008	August 2009	September 2009	Annual Change	Monthly Change
England	2.42	6.99	6.68	4.26	-0.32
Yorkshire and Humber	3.22	7.57	6.92	3.71	-0.65
York and North Yorkshire	1.41	3.88	3.19	1.78	-0.70
North Yorkshire	1.47	4.09	3.58	2.11	-0.51
York	1.26	3.46	2.51	1.24	-0.95
Craven	1.12	3.26	4.84	3.72	1.58
Hambleton	1.21	4.39	3.32	2.11	-1.07
Harrogate	0.95	3.38	2.34	1.39	-1.05
Richmondshire	1.63	4.66	4.05	2.41	-0.62
Ryedale	1.11	5.36	6.87	5.76	1.52
Scarborough	3.00	4.98	5.52	2.52	0.55
Selby	1.77	3.79	3.20	1.43	-0.59

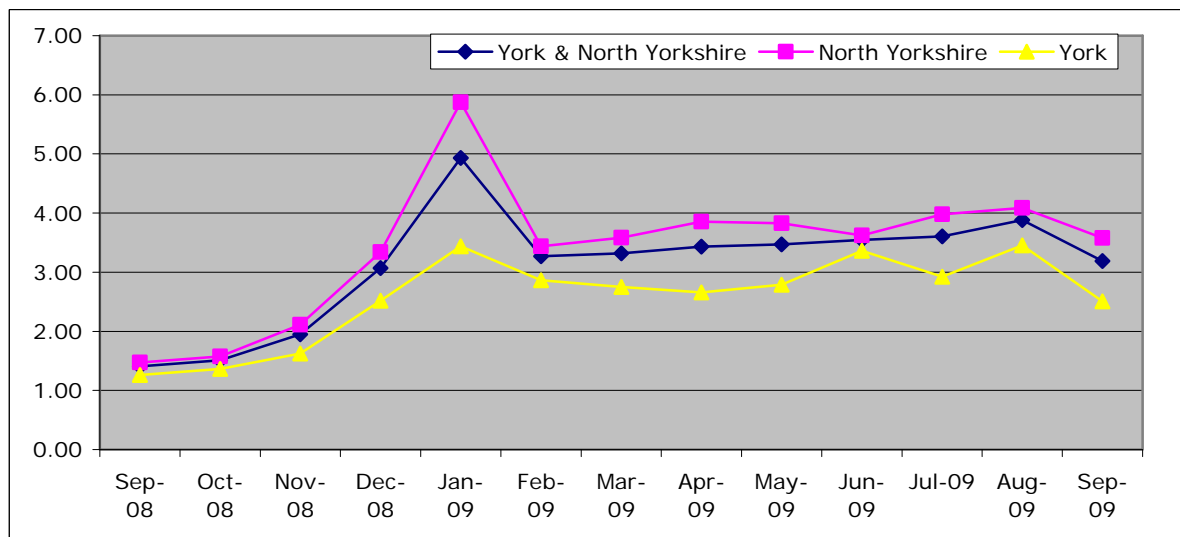
Source: Nomis

Figure: Number of Claimants to Notified Vacancies, Year on Year comparison



Source: Nomis

Figure: Number of Claimants to Notified Vacancies ratio trend



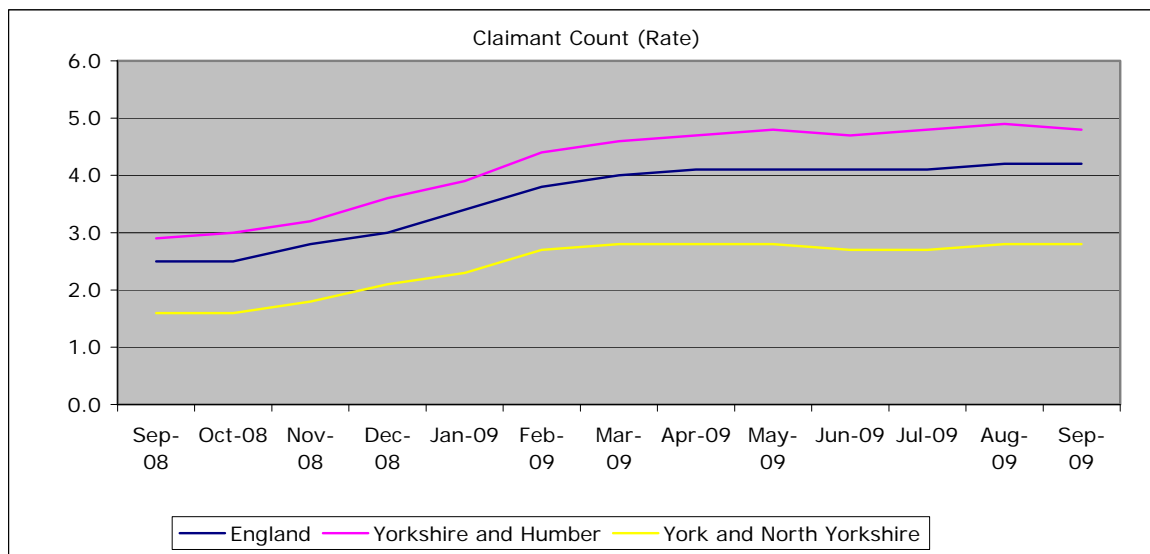
Source: Nomis

## Unemployment

## Total Claimant Count

	September 2009	Annual Change	Annual % Change	Monthly % Change
England	1329142	542540	69.0	-0.4
Yorkshire and Humber	155540	62952	68.0	-0.6
York and North Yorkshire	13270	5755	76.6	-0.1
North Yorkshire	9462	4044	74.6	0.0
York	3808	1711	81.6	-0.3
Craven	673	299	79.9	2.6
Hambleton	1126	472	72.2	-3.9
Harrogate	2163	1029	90.7	-0.7
Richmondshire	599	223	59.3	-6.3
Ryedale	653	262	67.0	-3.3
Scarborough	2502	871	53.4	2.6
Selby	1746	888	103.5	2.4

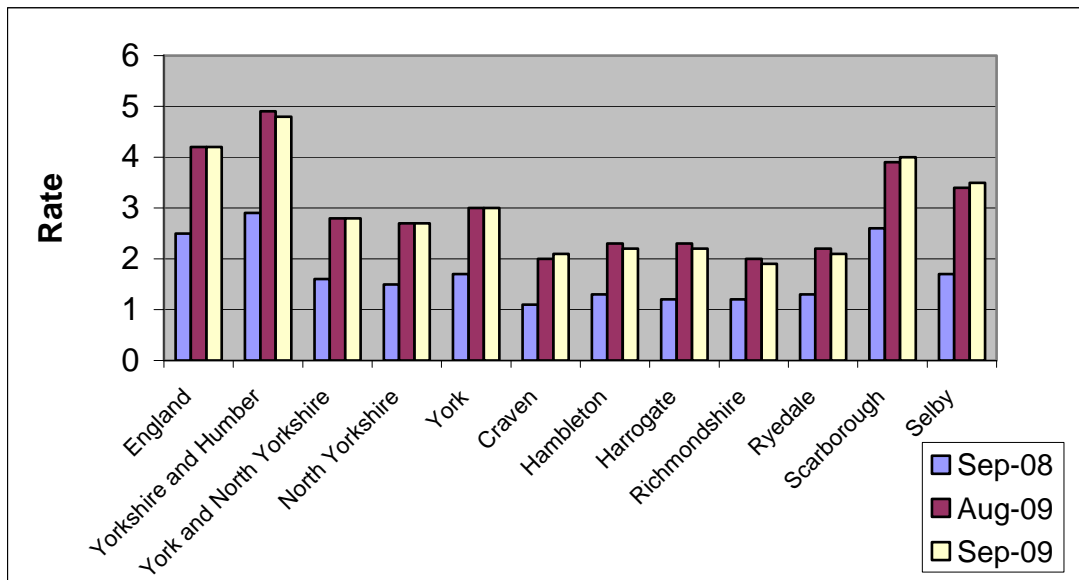
Source: Nomis



## Claimant Count Rate

	England	Yorkshire and Humber	York and North Yorkshire
September 2008	2.5	2.9	1.6
October 2008	2.5	3.0	1.6
November 2008	2.8	3.2	1.8
December 2008	3.0	3.6	2.1
January 2009	3.4	3.9	2.3
February 2009	3.8	4.4	2.7
March 2009	4.0	4.6	2.8
Apr-09	4.1	4.7	2.8
May-09	4.1	4.8	2.8
Jun-09	4.1	4.7	2.7
Jul-09	4.1	4.8	2.7
Aug-09	4.2	4.9	2.8
Sep-09	4.2	4.8	2.8

Source: Nomis



### Total Claiming for Over 12 months

	Sep-09	Annual Change	Annual % Change	Monthly % Change
England	141110	57130	68.0	7.2
Yorkshire and Humber	16300	8035	97.2	7.5
York and North Yorkshire	1130	515	83.7	11.1
North Yorkshire	820	385	88.5	11.0
York	310	125	67.6	12.9
Craven	50	25	100.0	0.0
Hambleton	90	40	80.0	16.7
Harrogate	175	90	105.9	8.6
Richmondshire	40	25	166.7	12.5
Ryedale	80	40	100.0	6.3
Scarborough	250	85	51.5	10.0
Selby	130	75	136.4	15.4

Source: Nomis

### Total claiming for over 6 months

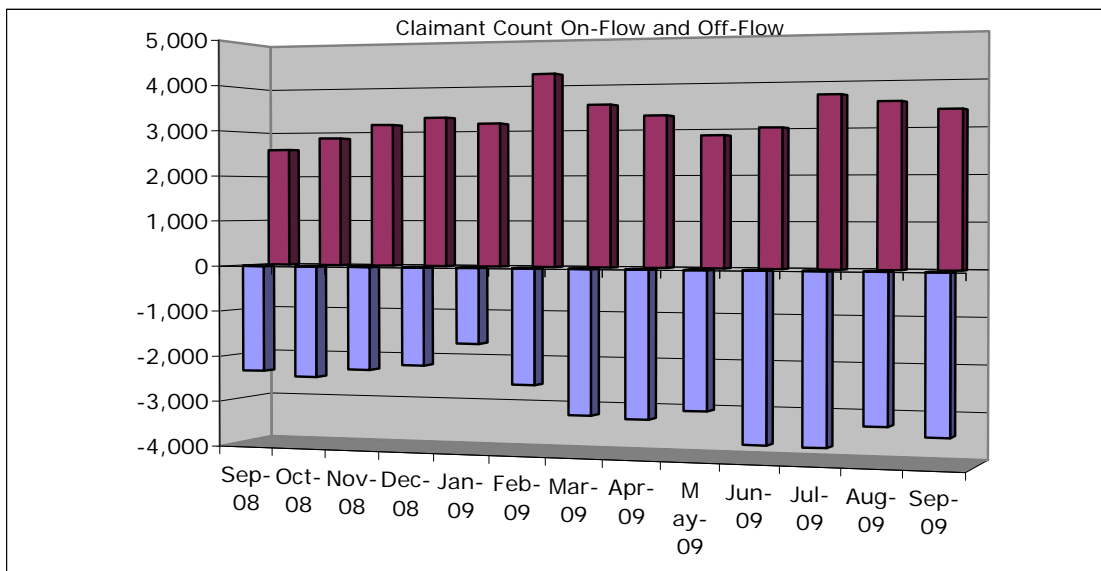
	September 2009	Annual Change	Annual % Change	Monthly % Change
England	441740	223490	109.4	10.5
Yorkshire and Humber	52000	28395	127.5	9.5
York and North Yorkshire	3920	2185	137.0	13.0
North Yorkshire	2875	1625	141.9	14.7
York	1045	560	124.4	8.0
Craven	185	115	209.1	13.3
Hambleton	350	200	137.9	16.9
Harrogate	585	350	166.7	13.1
Richmondshire	170	105	210.0	14.8
Ryedale	235	125	119.0	24.3
Scarborough	790	340	81.9	7.1
Selby	560	390	236.4	23.3

Source: Nomis

### Claimant Count On-Flow and Off-Flow in York and North Yorkshire

	Off-flow	On-flow	Difference
September 2008	-2,327	2,598	271
October 2008	-2,438	2,852	414
November 2008	-2,253	3,143	890
December 2008	-2,132	3,292	1,160
January 2009	-1,636	3,146	1,510
February 2009	-2,499	4,220	1,721
March 2009	-3,115	3,535	420
April 2009	-3,167	3,288	121
May 2009	-2,956	2,850	-106
Jun-09	-3,630	3,003	-627
Jul-09	-3,641	3,687	46
Aug-09	-3,169	3,532	363
Sep-09	-3,357	3,355	-2

Source: Nomis



### Claimant Count Off-Flow September 2009

	Off-Flow Sept 09	Annual % Change	Monthly % Change
England	303932	48.7	10.3
Yorkshire and Humber	34034	42.4	9.5
York and North Yorkshire	3357	44.3	5.9
North Yorkshire	2354	43.3	5.9
York	1003	46.6	6.0
Craven	165	42.2	1.2
Hambleton	304	52.8	16.5
Harrogate	541	50.7	4.6
Richmondshire	189	51.2	22.7
Ryedale	183	56.4	30.7
Scarborough	557	23.5	-11.2
Selby	416	50.2	14.9

Source: Nomis

### Claimant Count On-Flow September 2009

	On-flow Sept 09	Annual % Change	Monthly % Change
England	301059	32.0	1.1
Yorkshire and Humber	33445	24.2	-1.7
York and North Yorkshire	3355	29.1	-5.0
North Yorkshire	2352	26.0	-4.8
York	1003	37.2	-5.5
Craven	183	32.6	1.1
Hambleton	248	10.2	-19.7
Harrogate	534	36.2	-12.9
Richmondshire	142	-11.3	-29.0
Ryedale	156	18.2	2.6
Scarborough	626	32.1	4.0
Selby	463	34.2	12.1

Source: Nomis

### Ratio of Claimant Count Off-flow to On-flow

	Sep-08	Aug-09	Sep-09	Annual Change	Monthly Change
England	1.1	1.08	0.99	-0.13	-0.09
Yorkshire and Humber	1.1	1.10	0.98	-0.14	-0.11
York and North Yorkshire	1.1	1.11	1.00	-0.12	-0.12
North Yorkshire	1.1	1.11	1.00	-0.14	-0.11
York	1.1	1.12	1.00	-0.07	-0.12
Craven	1.2	1.11	1.11	-0.08	0.00
Hambleton	1.1	1.18	0.82	-0.31	-0.37
Harrogate	1.1	1.19	0.99	-0.10	-0.20
Richmondshire	1.3	1.30	0.75	-0.53	-0.55
Ryedale	1.1	1.09	0.85	-0.28	-0.23
Scarborough	1.1	0.96	1.12	0.07	0.16
Selby	1.2	1.14	1.11	-0.13	-0.03

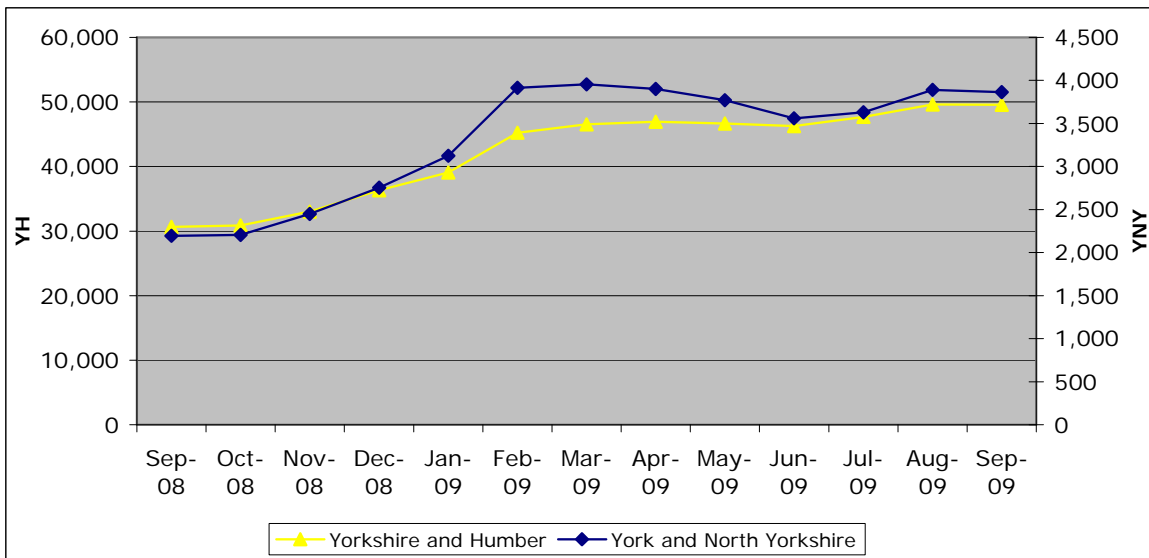
Source: Nomis

### Claimant Count 18-24 year olds

	Sep-09	Annual Change	Annual % Change	Monthly % Change
England	404045	155810	62.8	0.6
Yorkshire and Humber	49540	18885	61.6	-0.1
York and North Yorkshire	3865	1670	76.1	-0.6
North Yorkshire	2720	1140	72.2	-0.4
York	1140	525	85.4	-2.1
Craven	190	85	81.0	2.7
Hambleton	355	120	51.1	-5.3
Harrogate	590	310	110.7	-0.8
Richmondshire	195	60	44.4	-4.9
Ryedale	185	75	68.2	-7.5
Scarborough	690	250	56.8	2.2
Selby	520	250	92.6	4.0

Source: Nomis

Figure: 18 – 24 yr old claimants



**Business Activity**

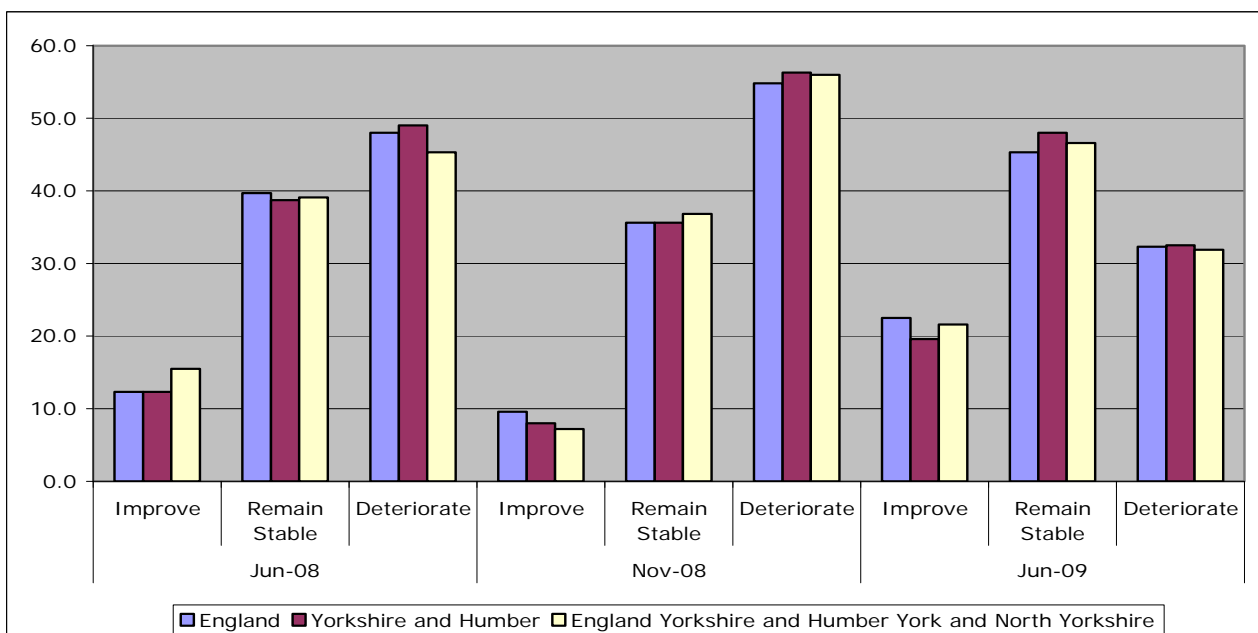
**Business Confidence**

The National Business Survey is a large scale research project conducted by Ipsos Mori on behalf of the RDA Network and Invest Northern Ireland. It explores perceptions of businesses across England and Northern Ireland, on current and recent business conditions as well as looking forward to potential issues and views on projected change over the coming months. The survey asks a series of questions on business confidence, a number of which are presented here.

Over the next 12 months do you expect the business climate in which your business operates to generally improve, remain stable, or deteriorate?

	Jun-08			Nov-08			Jun-09		
	Improve	Remain Stable	Deteriorate	Improve	Remain Stable	Deteriorate	Improve	Remain Stable	Deteriorate
England	12.3	39.7	48.0	9.6	35.6	54.8	22.5	45.3	32.3
Yorkshire and Humber	12.3	38.7	49.0	8.0	35.6	56.3	19.6	48.0	32.5
York and North Yorkshire	15.5	39.1	45.3	7.2	36.8	56.0	21.6	46.6	31.9

Source: 'National Business Survey, November 2008, (Ipsos Mori on behalf of England's Regional Development Agencies and Invest Northern Ireland)'

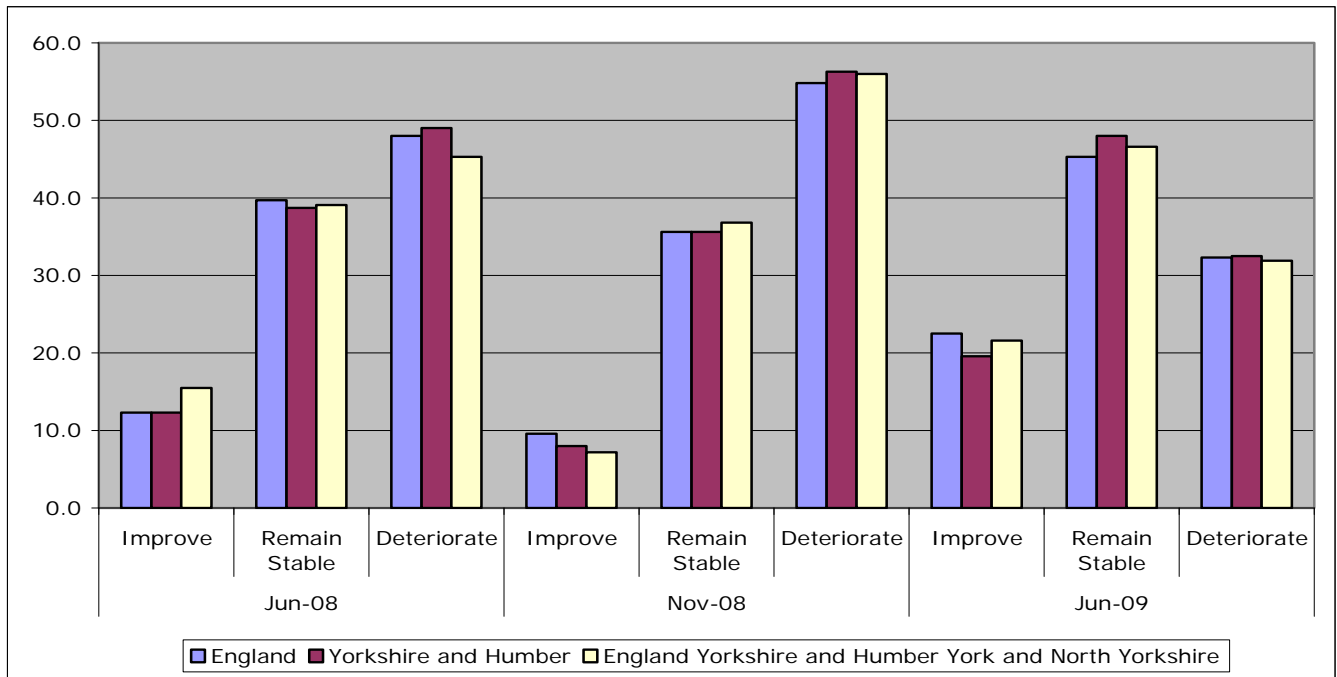


Source: 'National Business Survey, November 2008, (Ipsos Mori on behalf of England's Regional Development Agencies and Invest Northern Ireland)'

What has been the trend in the last 12 months with regard to numbers employed?

	Jun-08				Nov-08				Jun-09			
	Higher	Same	Lower	n/a	Higher	Same	Lower	n/a	Higher	Same	Lower	n/a
England	17.1	53.9	16.5	12.4	11.9	49.1	22.3	16.7	9.0	46.4	32.2	12.4
Yorkshire and Humber	15.1	54.1	18.1	12.6	13.4	46.9	24.4	15.2	7.1	44.5	29.8	18.6
York and North Yorkshire	14.3	56.0	15.6	14.2	12.8	43.9	20.0	23.3	6.3	50.9	24.3	18.5

Source: 'National Business Survey, November 2008, (Ipsos Mori on behalf of England's Regional Development Agencies and Invest Northern Ireland)'



Source: 'National Business Survey, November 2008, (Ipsos Mori on behalf of England's Regional Development Agencies and Invest Northern Ireland)'

N.B. The National Business Survey data is a sample and subject to some survey error. Sample sizes are smaller at more local levels therefore the confidence intervals are higher. Sample size can vary over the different time periods.

**Tourism**

**Number of Visits to Leisure Attractions in York and North Yorkshire**

	No of Attractions Responding	Previous Year	Total	% Change
Jul-08	54	621521	600900	-3%
Aug-08	56	832091	843934	1%
Sep-08	56	530743	446212	-16%
Oct-08	50	422394	381563	-10%
Nov-08	40	197447	184794	-6%
Dec-08	36	194004	150948	-22%
Jan-09	58	153038	120111	-22%
Feb-09	44	-	-	-16%
Mar-09	63	-	-	-11%
Apr-09	54	-	-	47%
May-09	54	-	-	11.1%
Jun-09	56	-	-	3.7%
Jul-09	57	-	-	7.2%

Source: Visitor Attraction Monitor, Yorkshire tourist board

# Housing

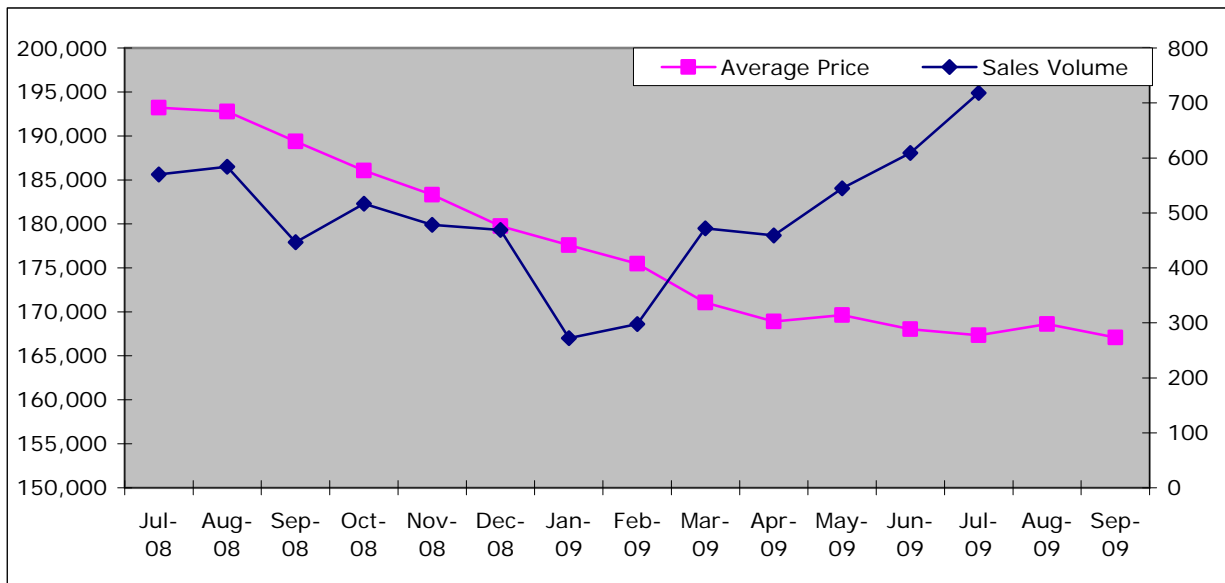
## Land Registry House Price Index

### North Yorkshire

	Index	Average Price	Monthly Change	Annual Change	Sales Volume
Jul-08	284.7	193,218	-0.6	-1.8	570
Aug-08	284.0	192,781	-0.2	-2.6	584
Sep-08	279.0	189,383	-1.8	-4.6	447
Oct-08	274.1	186,070	-1.7	-6.6	517
Nov-08	270.1	183,338	-1.5	-8.0	478
Dec-08	264.8	179,736	-2.0	-10.3	469
Jan-09	261.6	177,589	-1.2	-11.5	272
Feb-09	258.5	175,483	-1.2	-12.2	298
Mar-09	252.0	171,046	-2.5	-14.5	472
Apr-09	248.9	168,905	-1.3	-14.0	459
May-09	249.9	169,649	0.4	-13.5	545
Jun-09	247.5	168,012	-1.0	-13.5	609
Jul-09	246.6	167,347	-0.4	-13.4	718
Aug-09	248.4	168,625	0.8	-12.5	-
Sep-09	246.2	167,078	-0.9	-11.8	-

Source: Land Registry, House Price Index  
 - Data not available

Figure: North Yorkshire – Average Price & Sales Volume



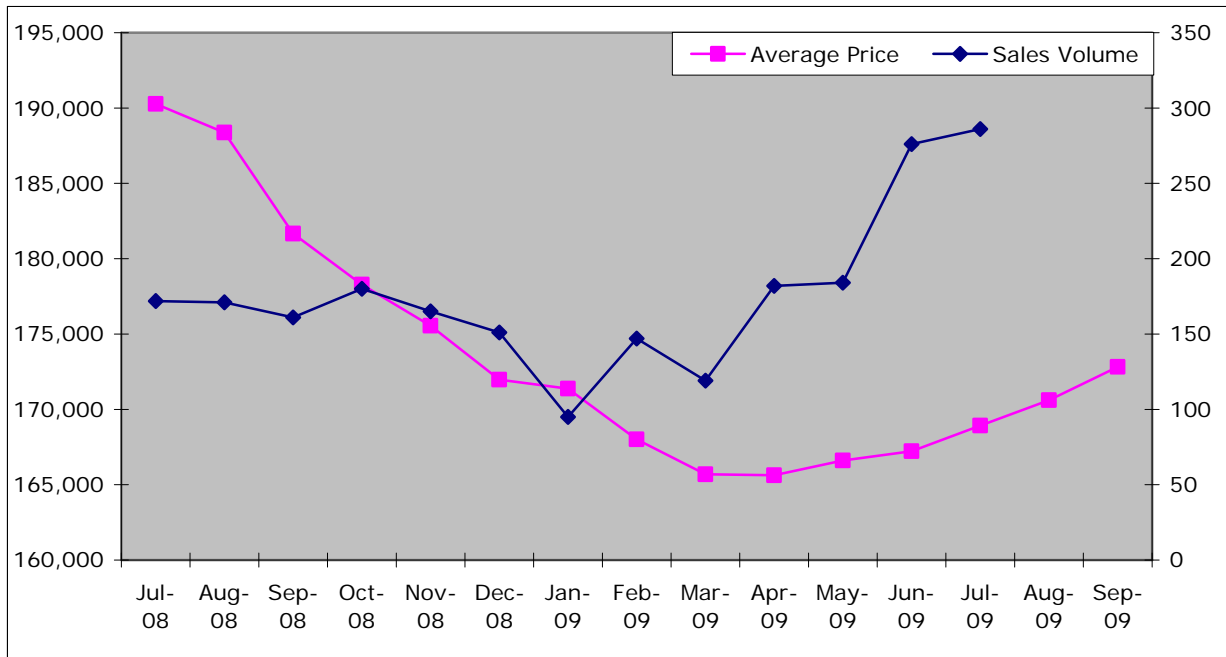
Source: Land Registry, House Price Index

York – Average Price & Sales Volume

	Index	Average Price	Monthly Change	Annual Change	Sales Volume
Jul-08	292.1	190,271	0.3	-1.3	172
Aug-08	289.2	188,368	-1.0	-2.7	171
Sep-08	278.9	181,654	-3.6	-6.7	161
Oct-08	273.7	178,270	-1.9	-8.6	180
Nov-08	269.5	175,542	-1.5	-9.3	165
Dec-08	264.0	171,974	-2.0	-11.2	151
Jan-09	263.1	171,370	-0.4	-11.2	95
Feb-09	257.9	168,020	-2.0	-13.4	147
Mar-09	254.3	165,691	-1.4	-14.0	119
Apr-09	254.2	165,627	0.0	-13.9	182
May-09	255.7	166,599	0.6	-13.3	184
Jun-09	256.7	167,216	0.4	-11.9	276
Jul-09	259.3	168,936	1.0	-11.2	286
Aug-09	261.9	170,604	1.0	-9.4	-
Sep-09	265.3	172,825	1.3	-4.9	-

Source: Land Registry, House Price Index  
 - Data not available

Figure: York – Average Price & Sales Volume



Source: Land Registry, House Price Index

## Mean House Prices

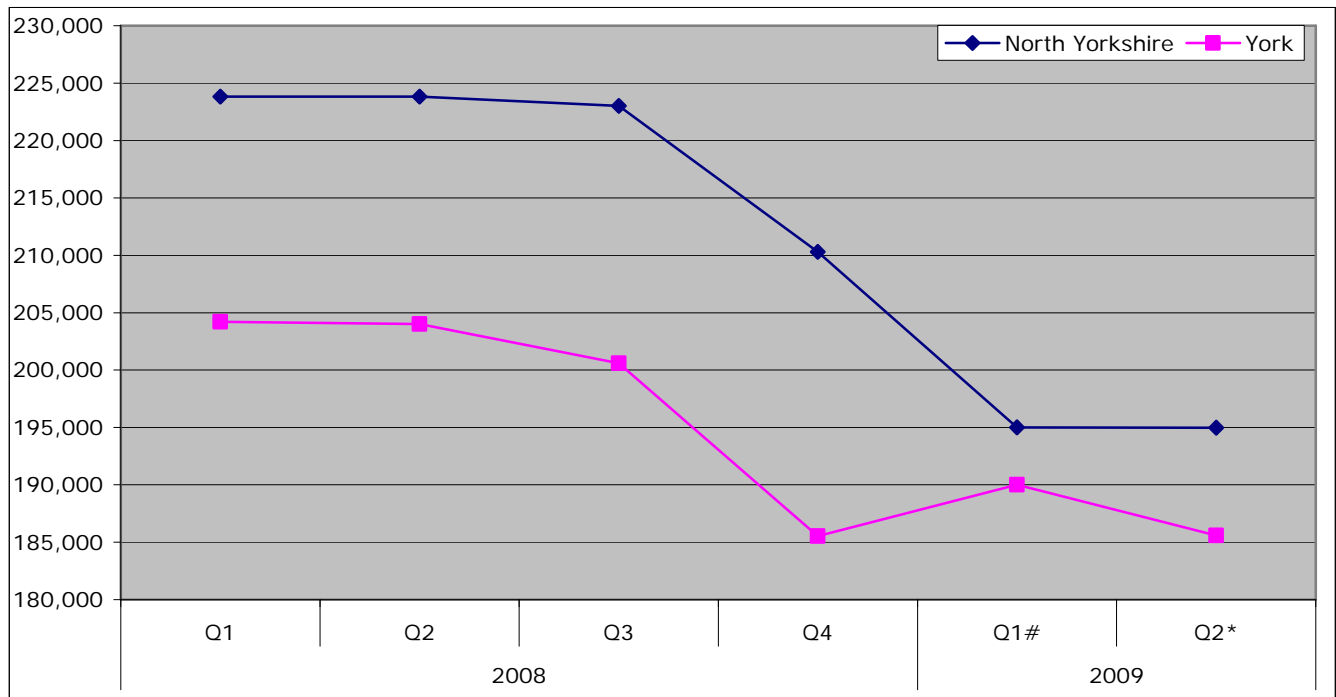
	2008				2009		% Change on previous year	% Change on previous Quarter
	Q1	Q2	Q3	Q4	Q1#	Q2*		
England	221,270	222,441	227,182	207,372	200,539	206,034	-7.4%	2.7%
Yorkshire & Humber	155,180	159,859	156,608	150,688	140,852	146,489	-8.4%	4.0%
York & North Yorkshire	220,471	220,073	219,456	207,143	191,931	190,597	-13.4%	-0.7%
North Yorkshire	223,812	223,835	223,002	210,287	195,019	194,982	-12.9%	0.0%
York	204,209	204,004	200,603	185,531	189,994	185,595	-9.0%	-2.3%
Craven	206,501	211,979	213,589	202,136	168,367	193,672	-8.6%	15.0%
Hambleton	231,621	248,417	240,533	254,409	197,409	213,195	-14.2%	8.0%
Harrogate	280,397	286,204	269,747	244,392	239,973	238,305	-16.7%	-0.7%
Richmondshire	210,311	230,944	223,971	190,838	208,510	196,254	-15.0%	-5.9%
Ryedale	266,365	225,208	239,240	233,013	210,153	180,015	-20.1%	-14.3%
Scarborough	179,150	169,107	167,178	172,640	150,757	147,100	-13.0%	-2.4%
Selby	185,217	184,721	200,788	174,182	170,288	170,643	-7.6%	0.2%

Source: DCLG

# Data has been revised

\* Data is provisional

Figure: Mean House Prices, North Yorkshire and York



Source: DCLG

# Data has been revised

\* Data is provisional

## Property Sales

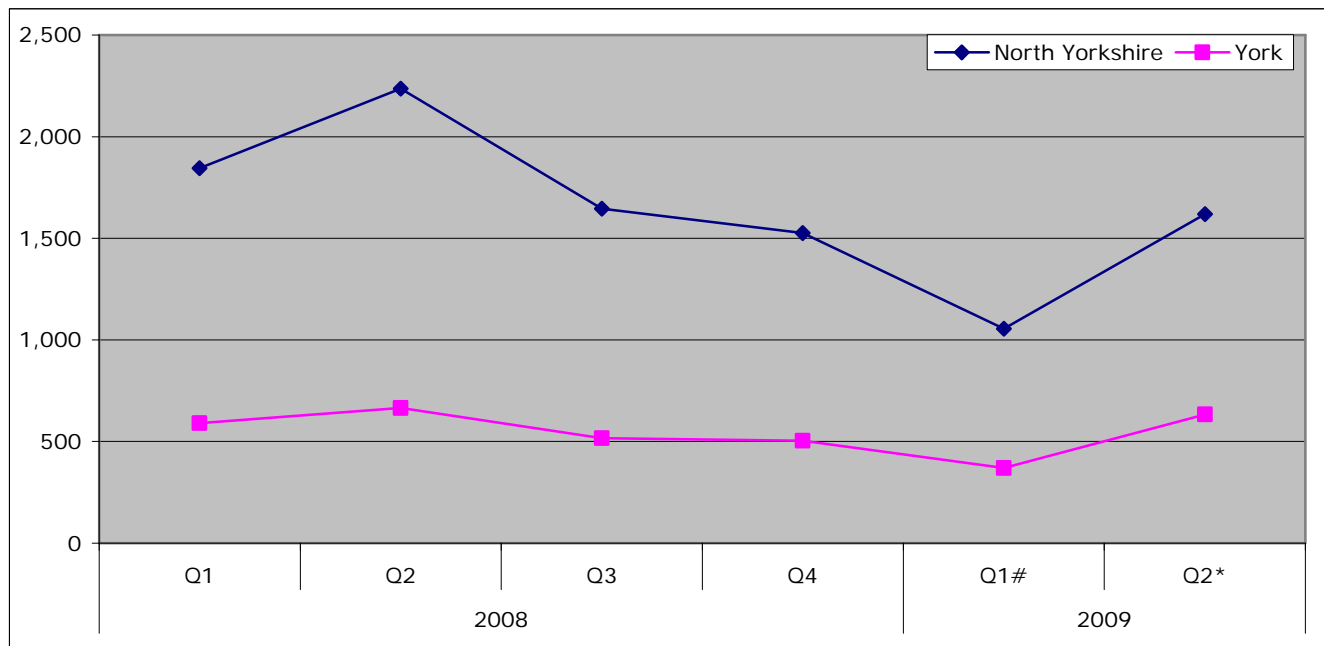
	2008				2009		% Change on previous year	% Change on previous Quarter
	Q1	Q2	Q3	Q4	Q1#	Q2*		
England	173,560	181,420	138,533	116,327	87,289	126,631	-30.2%	45.1%
Yorkshire & Humber	17,276	18,717	14,017	12,059	8,537	12,004	-35.9%	40.6%
York & North Yorkshire	2,436	2,902	2,162	2,030	1,424	2,253	-22.4%	58.2%
North Yorkshire	1,845	2,237	1,646	1,526	1,055	1,619	-27.6%	53.5%
York	591	665	516	504	369	634	-4.7%	71.8%
Craven	173	223	161	163	92	133	-40.4%	44.6%
Hambleton	222	292	244	202	145	231	-20.9%	59.3%
Harrogate	489	537	443	352	316	450	-16.2%	42.4%
Richmondshire	133	188	94	94	61	110	-41.5%	80.3%
Ryedale	124	178	127	146	67	121	-32.0%	80.6%
Scarborough	448	485	381	347	240	335	-30.9%	39.6%
Selby	256	334	196	222	134	239	-28.4%	78.4%

Source: DCLG

# Data has been revised

\* Data is provisional

Figure: Number of Property Sales, North Yorkshire and York



Source: DCLG

# Data has been revised

\* Data is provisional

## Mortgage and Landlord Possession Claims/Orders

The following data indicates the number of claims/orders that have been issued at County Court level for possession of properties either under mortgage or landlord possession.

N.B. Important note - Introduction of Mortgage Pre-Action Protocol (MPAP) on 19 November 2008.

A new mortgage pre action protocol (MPAP), was introduced for possession claims in the County Courts with effect from 19 November 2008.

Evidence from administrative records from October to December 2008 suggests that this date coincided with a fall of around 50% in the daily and weekly numbers of new mortgage repossession claims being issued in the courts. It therefore seems highly likely that the launch of the MPAP has led to a marked fall in the number of new claims being issued during the latter part of the period covered by this bulletin. However, given the apparent cause, users should exercise caution in drawing broader inferences from the fall in mortgage possession claims issued in Q4 2008.

Mortgage possession orders are typically made around 8 weeks after the corresponding claims are issued. For this reason, the impact of the MPAP is expected to occur during the early months of 2009. At this early stage is not clear to what extent the launch of the MPAP has led to a permanent fall in the numbers of new mortgage possession claims being issued, as opposed to some merely being postponed. This will become clearer as statistics for 2009 are published.

### Mortgage Possession Claims Issued

	Q1 2008	Q2 2008	Q3 2008	Q4 2008	Q1 2009	Q2 2009	% change since Q2 2008	% change since Q1 2009
Yorkshire & Humber	4,038	3,928	3,962	2,669	2,476	2,760	-30%	11%
York & North Yorkshire	360	337	358	258	237	245	-27%	3%
Harrogate	59	56	44	45	40	45	-20%	13%
Scarborough	120	97	138	93	78	80	-18%	3%
Skipton	33	41	29	20	24	25	-39%	4%
York	148	143	147	100	95	95	-34%	0%

Source: Ministry of Justice

### Mortgage Possession Orders Issued

	Q1 2008	Q2 2008	Q3 2008	Q4 2008	Q1 2009	Q2 2009	% change since Q2 2008	% change since Q1 2009
Yorkshire & Humber	-	-	-	-	1,821	1,920	-	5%
York & North Yorkshire	-	-	-	-	152	160	-	5%
Harrogate	-	-	-	-	30	25	-	-17%
Scarborough	90	80	116	113	57	45	-44%	-21%
Skipton	29	32	31	27	15	20	-38%	33%
York	100	106	93	123	50	70	-34%	40%

Source: Ministry of Justice

## Landlord Possession Claims issued

	Q1 2008	Q2 2008	Q3 2008	Q4 2008	Q1 2009	Q2 2009	% change since Q2 2008	% change since Q1 2009
Yorkshire & Humber	2,671	2,656	2,434	2,438	2,370	2,340	-12%	-1.3%
York & North Yorkshire	280	252	288	266	232	240	-5%	3.4%
Harrogate	46	48	56	40	33	40	-17%	21.2%
Scarborough	82	64	81	85	60	75	17%	25.0%
Skipton	15	8	16	18	12	10	25%	-16.7%
York	137	132	135	123	127	115	-13%	-9.4%

Source: Ministry of Justice

## Landlord Possession Orders issued

	Q1 2008	Q2 2008	Q3 2008	Q4 2008	Q1 2009	Q2 2009	% change since Q2 2008	% change since Q1 2009
Yorkshire & Humber	-	-	-	-	2,403	1,660	-	-31%
York & North Yorkshire	-	-	-	-	233	-	-	-
Harrogate	-	-	-	-	44	20	-	-55%
Scarborough	76	52	69	75	70	30	-42%	-57%
Skipton	16	5	13	12	12	*	-	-
York	110	75	106	116	107	95	27%	-11%

Source: Ministry of Justice

\* The figure is not provided as the number of claims leading to an order made is either 7 or less, or if it is a % change where there are fewer than 30 observations in the base period

## Planning

### Total Planning Decisions

	Q1 2008	Q2 2008	Q3 2008	Q4 2008	Q1 2009	Q2 2009	Annual Change		Quarterly Change	
England	131,704	144,700	-	115,489	93,100	105,000	-39,700	-27.4%	11,900	12.8%
Yorkshire and Humber	11,534	12,100	-	9,937	7,800	8,900	-3,200	-26.4%	1,100	14.1%
York and North Yorkshire	2,806	3,125	-	2,513	2,111	2,197	-928	-29.7%	86	4.1%
North Yorkshire	2,352	2,613	2,459	2,058	1,737	1,818	-795	-30.4%	81	4.7%
York	454	512	#	455	374	379	-133	-26.0%	5	1.3%
Craven	170	193	200	117	121	#	#	#	#	#
Hambleton	323	399	360	300	278	337	-62	-15.5%	59	21.2%
Harrogate	642	672	561	613	461	427	-245	-36.5%	-34	-7.4%
Richmondshire	154	183	199	141	138	173	-10	-5.5%	35	25.4%
Ryedale	188	228	258	180	155	187	-41	-18.0%	32	20.6%
Scarborough	276	265	240	186	165	188	-77	-29.1%	23	13.9%
Selby	260	296	276	213	168	211	-85	-28.7%	43	25.6%
North York Moors	195	197	216	166	143	160	-37	-18.8%	17	11.9%
Yorkshire Dales	144	180	149	142	108	135	-45	-25.0%	27	25.0%

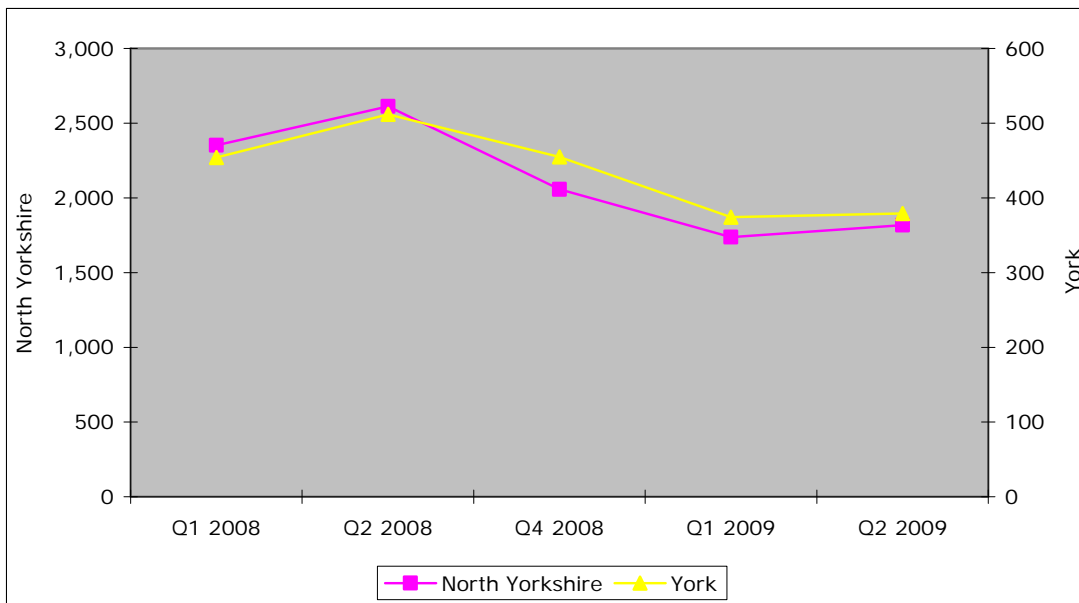
Source: Statistics of Planning Decisions, CLG

# Data not submitted

- Data cannot be calculated

The figures for York and North Yorkshire and North Yorkshire for Q2 2009 does not include data for Craven

Figure: Total Planning Decisions, North Yorkshire/York



Source: Statistics of Planning Decisions, CLG

N.B. The number of decisions made in Q3 2008 is not available and therefore excluded from the chart. The figure for North Yorkshire for Q2 2009 does not include data for Craven

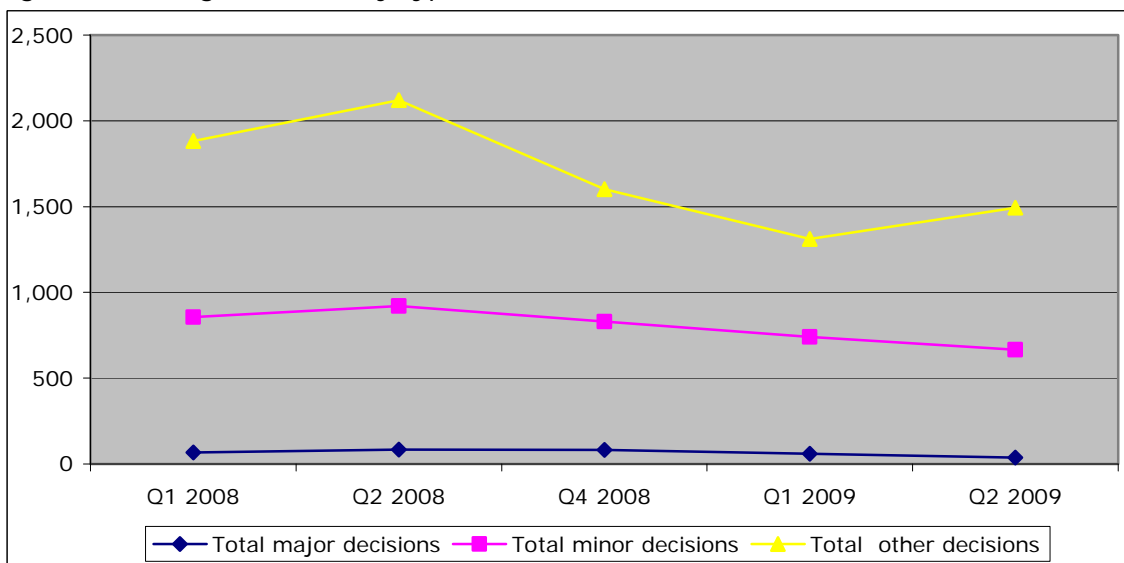
**Breakdown of planning decisions by type in York and North Yorkshire**

	Q1 2008	Q2 2008	Q3 2008	Q4 2008	Q1 2009	Q2 2009
Total major decisions	67	83	-	81	60	37
Total minor decisions	856	921	-	830	740	666
Total other decisions	1,883	2,121	-	1,602	1,311	1,494
Total	2,806	3,125	-	2,513	2,111	2,197

Source: Statistics of Planning Decisions, CLG

N.B Figures shown for Q2 2009 does not include data for Craven

Figure: Planning Decisions by type, York and North Yorkshire



Source: Statistics of Planning Decisions, CLG

N.B. The total number of decisions made in Q3 2008 is unknown and therefore excluded from the chart. N.B Figures shown for Q2 2009 does not include data for Craven

**Breakdown of planning decisions by type, North Yorkshire**

	Q1 2008	Q2 2008	Q3 2008	Q4 2008	Q1 2009	Q2 2009
Total major decisions	58	66	54	69	50	33
Total minor decisions	750	799	807	700	630	575
Total other decisions	1,544	1,748	1,598	1,289	1,057	1,210
Total	2,352	2,613	2,459	2,058	1,737	1,818

Source: Statistics of Planning Decisions, CLG

N.B Figures shown for Q2 2009 does not include data for Craven

**Breakdown of planning decisions by type, York**

	Q1 2008	Q2 2008	Q3 2008	Q4 2008	Q1 2009	Q2 2009
Total major decisions	9	17	#	12	10	4
Total minor decisions	106	122	#	130	110	91
Total other decisions	339	373	#	313	254	284
Total	454	512	#	455	374	379

Source: Statistics of Planning Decisions, CLG

# Data not submitted

## Community and Voluntary Sector

### Demand for CAB services

<b>2009/10 Q1 CAB services</b>	<b>Craven</b>	<b>Hambleton</b>	<b>Richmondshire</b>	<b>Ripon</b>	<b>Ryedale</b>	<b>Scarborough</b>	<b>Selby</b>
<b>Benefits</b>	566	828	847	575	951	898	1288
<b>Debt</b>	619	1142	737	179	781	1240	1985
<b>Employment</b>	202	308	230	147	193	325	642
<b>Health &amp; Community</b>	31	28	32	21	13	28	43
<b>Relationships &amp; family</b>	59	119	112	88	93	125	200
<b>Total</b>	1477	2425	1958	1010	2031	2616	4158

N.B it is hoped CAB figures for York and Harrogate will be included next quarter. A new sub-regional figure is included in the main report