

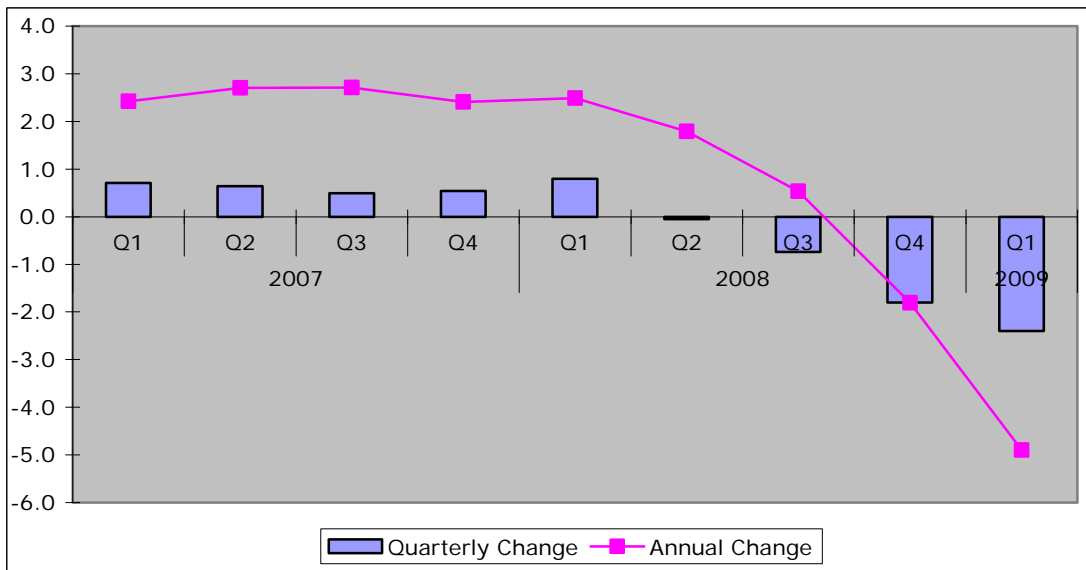
National Picture

Key Indicators	May 2009	June 2009	Change
Inflation figures - CPI	2.2	1.8	-0.4
Inflation figures - RPI	-1.1	-1.6	-0.5
New Businesses - VAT Registrations	12,275	17,776	5,501
			44.8%
VAT De-registrations	14,743	17,436	2,693
			18.3%

Source: ONS, UK Trade Info

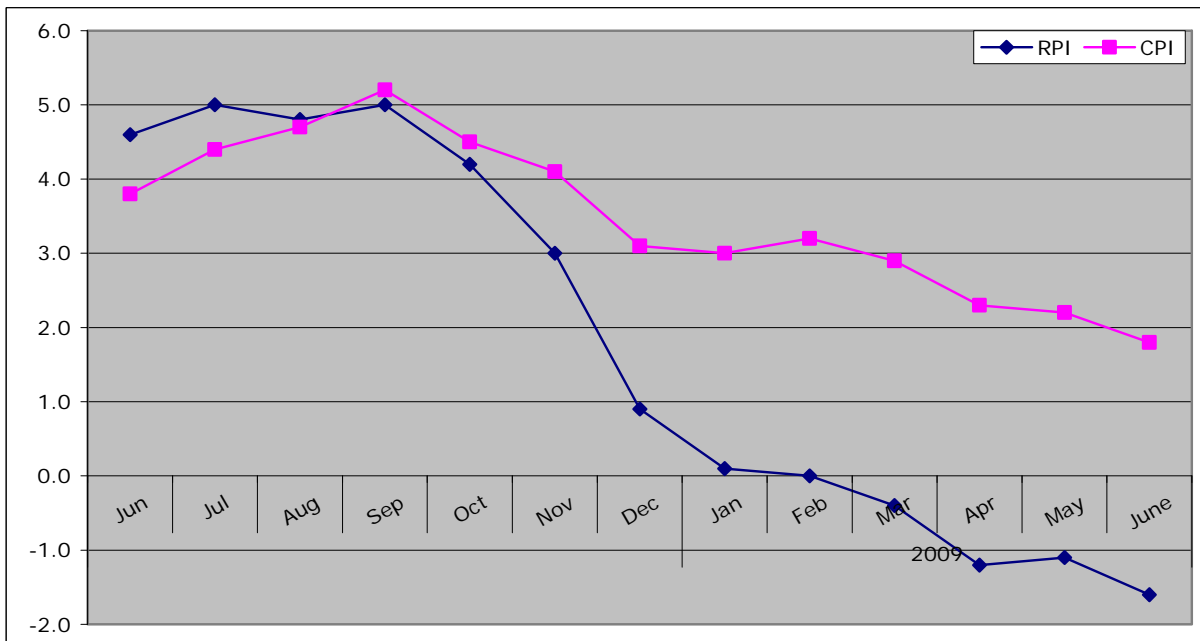
- ◆ Revised figures show that GDP contracted by 2.4% in Q1 of 2009.

Figure: Change to GDP



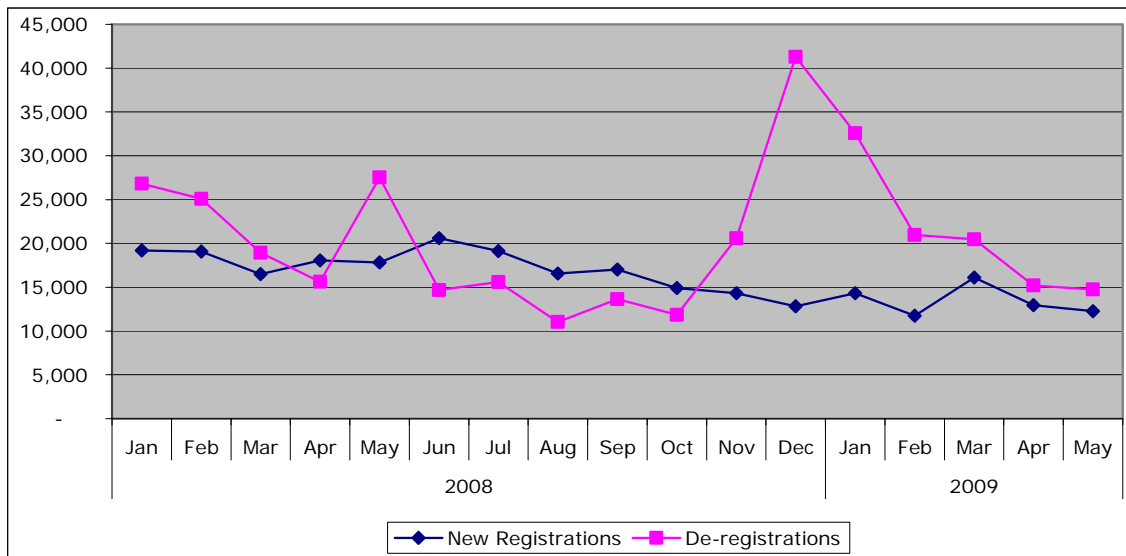
Source: ONS

Figure: Inflation Trends



Source: ONS

Figure 1: New Business Registrations and De-Registrations



Source: UK Trade Info

Local Picture

Labour Market

Job Gains/Losses

Confirmed Job losses - June 2009

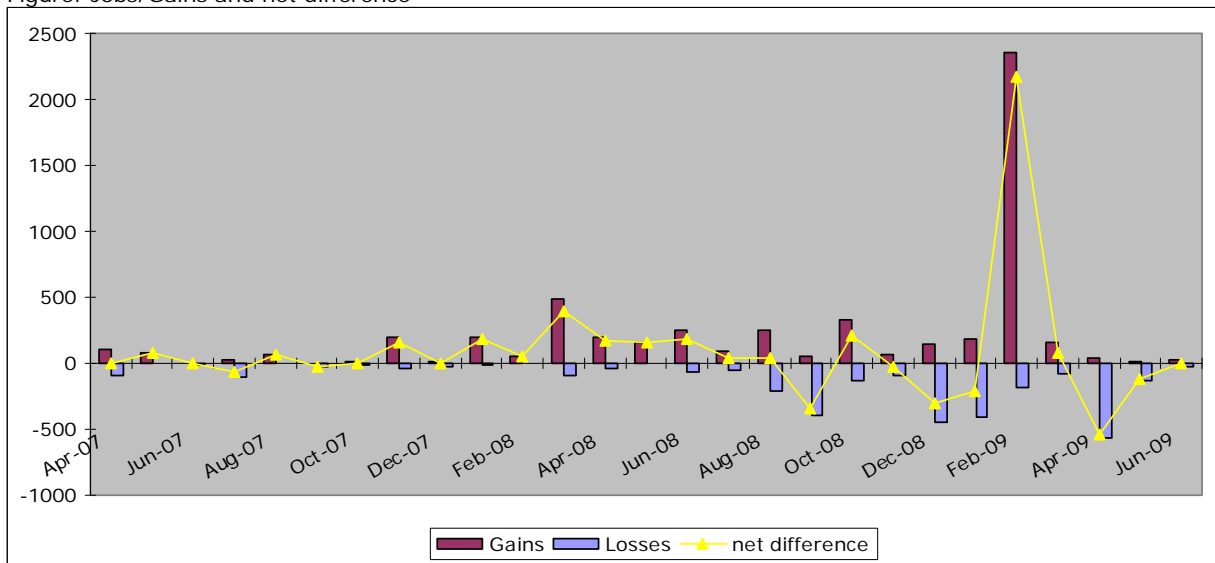
Company	Location	No. jobs	Type of Service
Cheltenham and Gloucester	York	-5	Financial Services
Atlas Ward Structures	Scarborough		Manufacture of fabricated metal products
Dairy Farmers of Britain	Scarborough	-18	Manufacture of Food and Beverages
Birthdays	Selby		Retail
Currys	Selby	-6	Retail

Confirmed Job Gains - June 2009

Company	Location	No. Jobs	Type of Service
Cooper and Hall	Harrogate	3	Other business activities
Makins Restaurant and Takeaway	Helmsley	20	Hotels and Restaurants

Source: Yorkshire Futures Monthly jobs database

Figure: Jobs/Gains and net difference



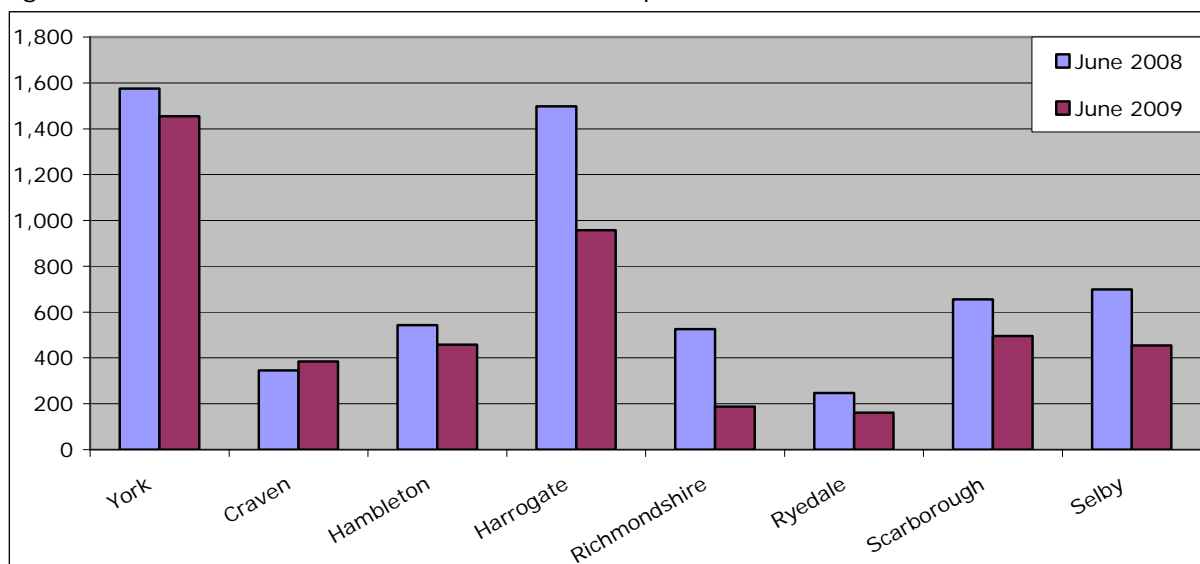
Source: Yorkshire Forward jobs database

Job Centre Plus – notified job vacancies

	June 2009	Annual Change		Monthly Change	
England	243,573	-73,470	-23%	32,879	16%
Yorkshire and Humber	26,144	-10,782	-29%	3,429	15%
York and North Yorkshire	4,556	-1,533	-25%	331	8%
North Yorkshire	3,101	-1,413	-31%	219	8%
York	1,455	-121	-8%	112	8%
Craven	384	39	11%	234	156%
Hambleton	458	-84	-15%	108	31%
Harrogate	957	-540	-36%	-32	-3%
Richmondshire	189	-337	-64%	1	1%
Ryedale	162	-86	-35%	-53	-25%
Scarborough	497	-160	-24%	-86	-15%
Selby	454	-245	-35%	47	12%

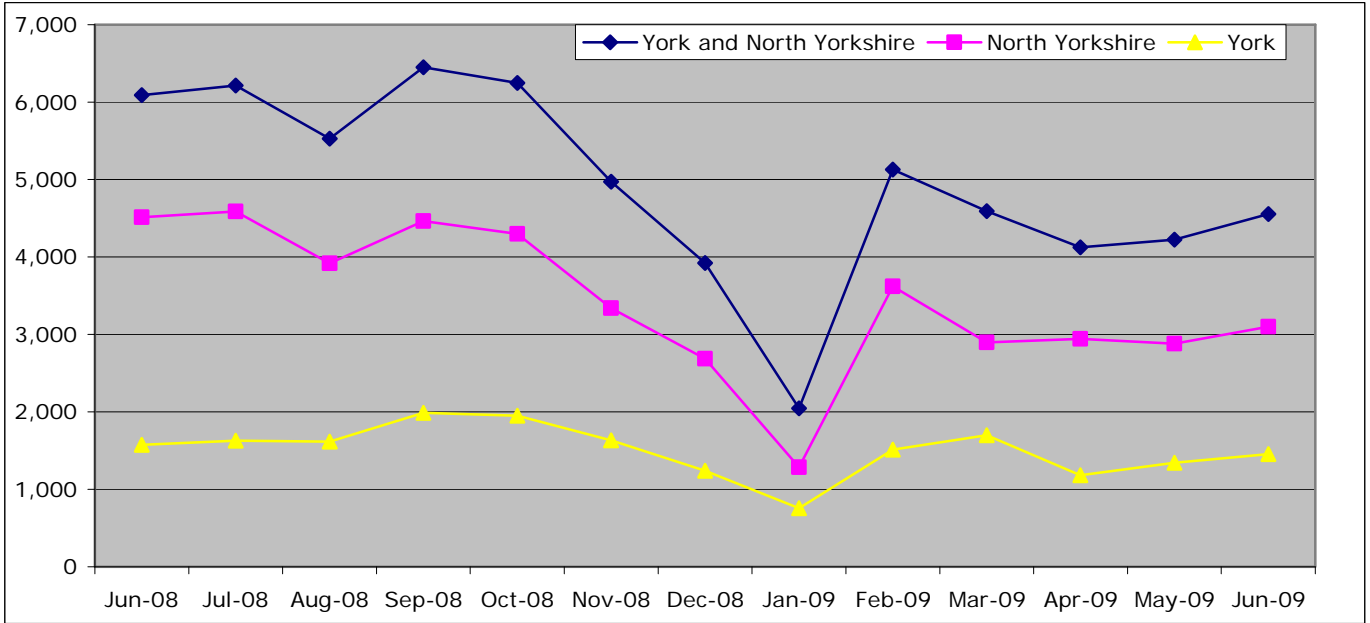
Source: Nomis

Figure: Number of Vacancies, Year on Year comparison



Source: Nomis

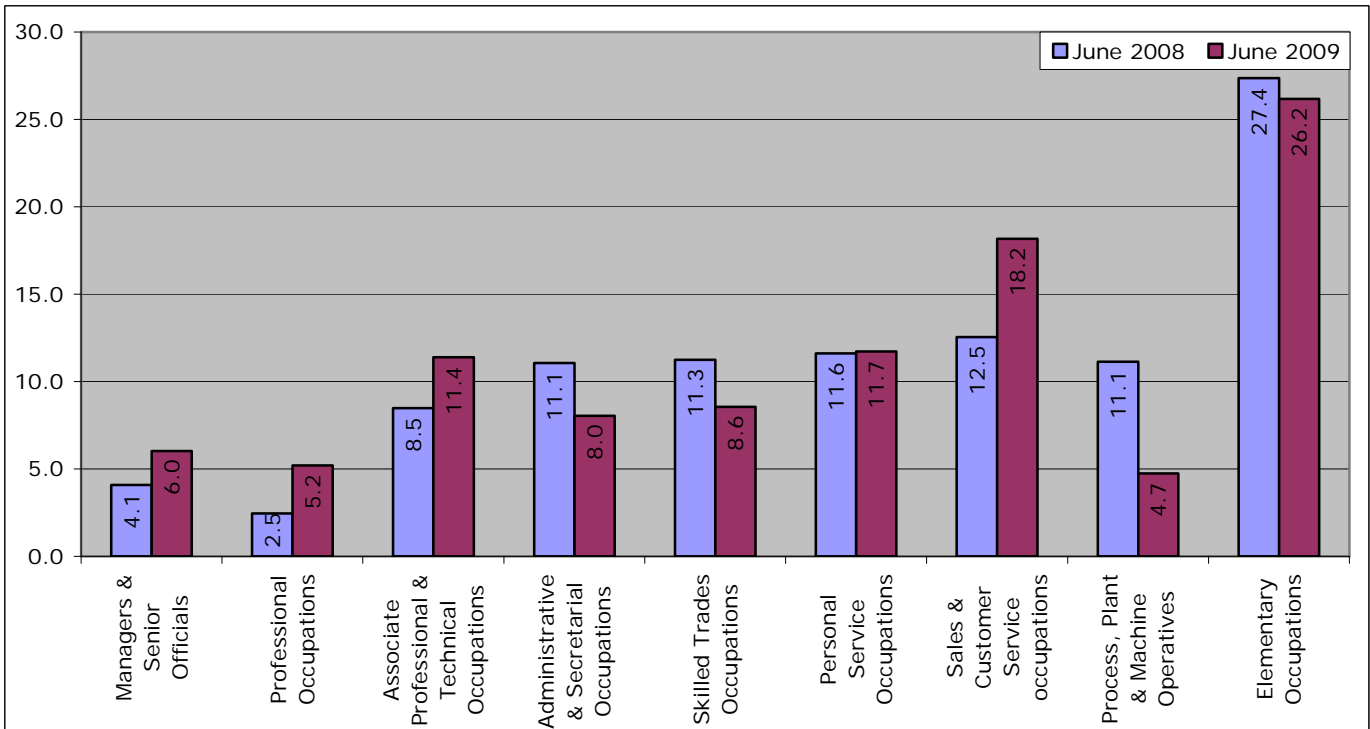
Figure: Number of vacancies trend



Source: Nomis

Vacancies by Occupation

Figure: Share of vacancies by occupation, York and North Yorkshire, year on year comparison



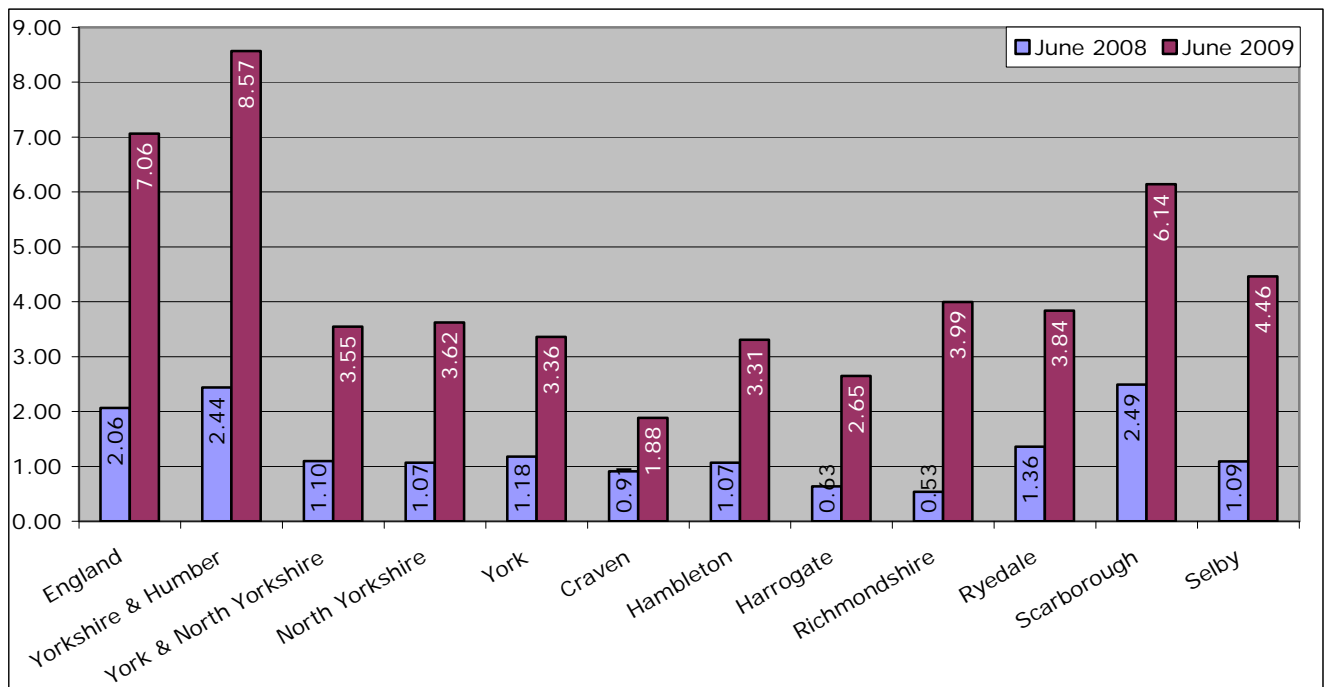
Source: Nomis

Number of Claimants to Notified Vacancies ratio

	June 2008	May 2009	June 2009	Annual Change	Monthly Change
England	2.06	6.80	7.06	5.00	0.26
Yorkshire and Humber	2.44	8.57	8.57	6.13	-0.01
York and North Yorkshire	1.10	3.47	3.55	2.45	0.07
North Yorkshire	1.07	3.83	3.62	2.56	-0.21
York	1.18	2.79	3.36	2.19	0.57
Craven	0.91	4.85	1.88	0.97	-2.96
Hambleton	1.07	3.68	3.31	2.24	-0.37
Harrogate	0.63	2.42	2.65	2.02	0.23
Richmondshire	0.53	4.21	3.99	3.46	-0.22
Ryedale	1.36	3.95	3.84	2.48	-0.11
Scarborough	2.49	5.69	6.14	3.65	0.45
Selby	1.09	4.37	4.46	3.37	0.09

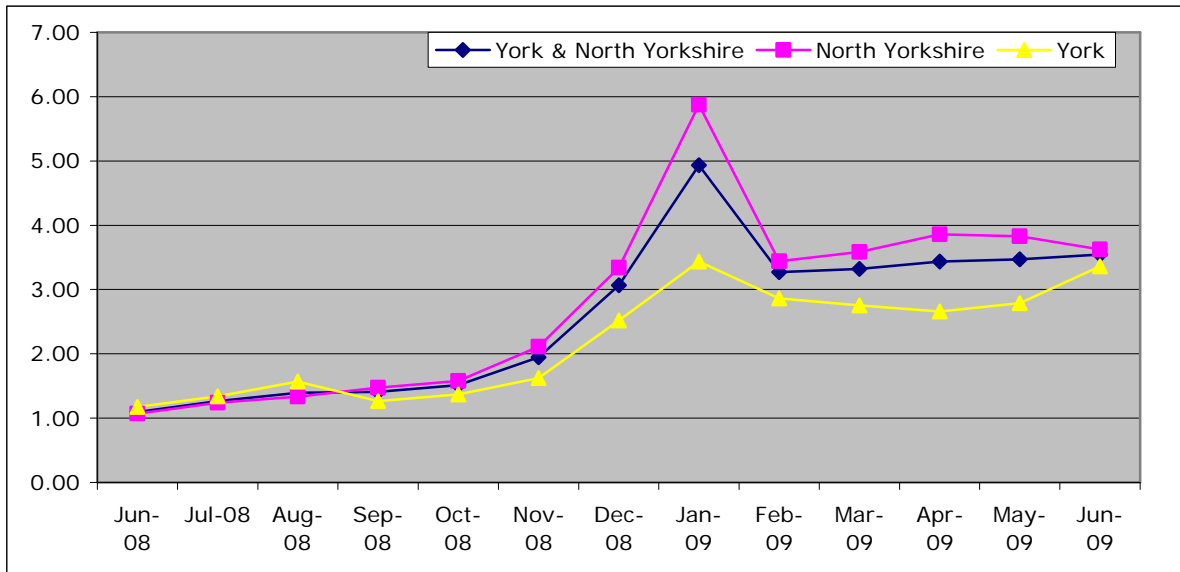
Source: Nomis

Figure: Number of Claimants to Notified Vacancies, Year on Year comparison



Source: Nomis

Figure: Number of Claimants to Notified Vacancies ratio trend



Unemployment

Total Claimant Count

	June 2009	Annual Change	Annual % Change	Monthly % Change
England	1,298,572	603022	86.7	-1.0
Yorkshire and Humber	152746	71919	89.0	-0.5
York and North Yorkshire	12898	6619	105.4	-4.5
North Yorkshire	9244	4750	105.7	-5.4
York	3654	1869	104.7	-2.4
Craven	644	352	120.5	-3.7
Hambleton	1101	562	104.3	-6.1
Harrogate	2024	1130	126.4	-6.0
Richmondshire	595	327	122.0	-3.3
Ryedale	679	375	123.4	-6.1
Scarborough	2536	1046	70.2	-4.9
Selby	1665	958	135.5	-5.7

Source: Nomis

Figure: Claimant count rate, June 2008-June 2009

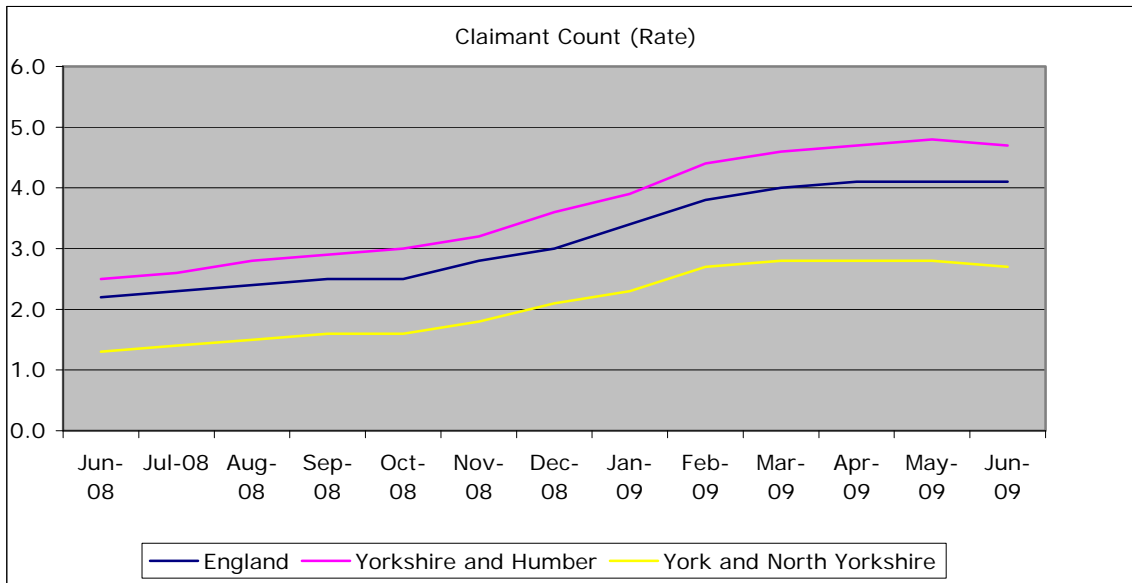
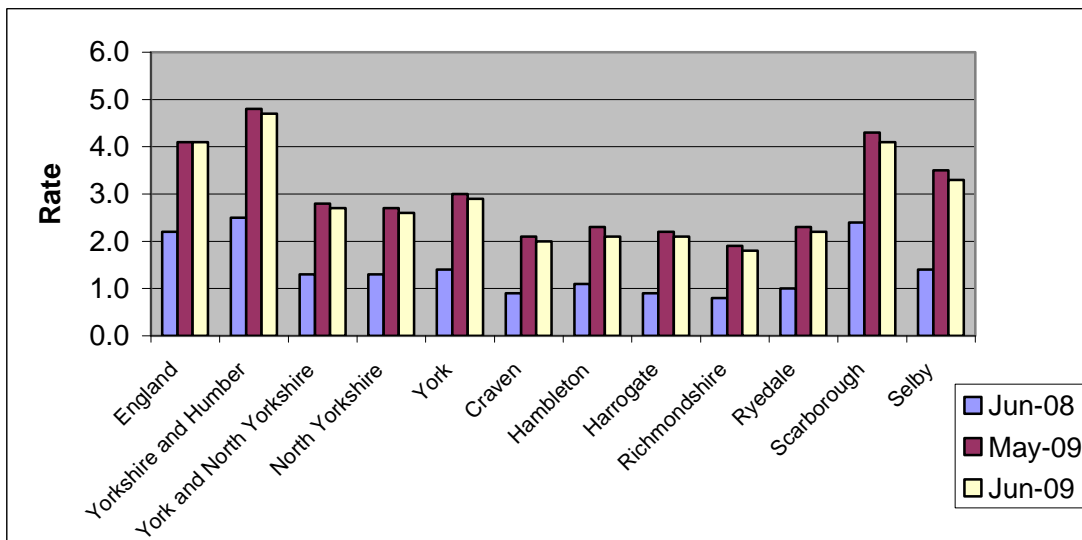


Figure: Claimant Count Rate by Local Authority



Total Claiming for Over 12 months

	June 2009	Annual Change	Annual % Change	Monthly % Change
England	112,530	26580	30.9	5.0
Yorkshire and Humber	12,705	4345	52.0	6.7
York and North Yorkshire	835	195	30.5	4.4
North Yorkshire	620	155	33.3	6.0
York	215	40	22.9	0.0
Craven	40	15	60.0	14.3
Hambleton	60	10	20.0	0.0
Harrogate	140	50	55.6	7.7
Richmondshire	35	20	133.3	16.7
Ryedale	65	35	116.7	8.3
Scarborough	195	5	2.6	2.6
Selby	85	20	30.8	13.3

Source: Nomis

Total claiming for over 6 months

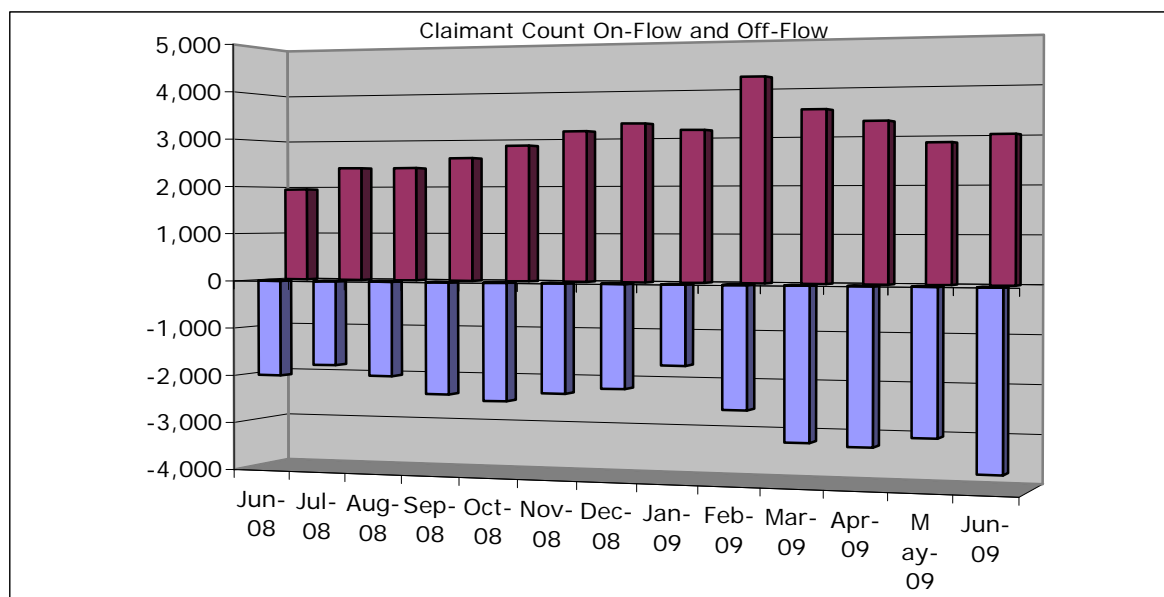
	June 2009	Annual Change	Annual % Change	Monthly % Change
England	376825	173810.0	85.6	7.1
Yorkshire and Humber	45665	23730	108.2	7.8
York and North Yorkshire				
Yorkshire	3315	1730	109.1	6.4
North Yorkshire	2430	1285	112.2	6.3
York	890	450	102.3	7.2
Craven	140	75	115.4	3.7
Hambleton	275	145	111.5	7.8
Harrogate	470	255	118.6	5.6
Richmondshire	135	85	170.0	3.8
Ryedale	200	110	122.2	5.3
Scarborough	760	330	76.7	4.1
Selby	440	275	166.7	11.4

Source: Nomis

Claimant Count On-Flow and Off-Flow in York and North Yorkshire

	Off-flow	On-flow	Difference
June 2008	-2,005	1,945	-60
July 2008	-1,767	2,399	632
August 2008	-1,971	2,395	424
September 2008	-2,327	2,598	271
October 2008	-2,438	2,852	414
November 2008	-2,253	3,143	890
December 2008	-2,132	3,292	1,160
January 2009	-1,636	3,146	1,510
February 2009	-2,499	4,220	1,721
March 2009	-3,115	3,535	420
April 2009	-3,167	3,288	121
May 2009	-2,956	2,850	-106
Jun-09	-3,630	3,003	-627

Source: Nomis



Claimant Count Off-Flow May 2009

	Off-Flow June 09	Annual % Change	Monthly % Change
England	286,392	59.6	11.6
Yorkshire and Humber	32,010	53.5	12.9
York and North Yorkshire	3,630	81.0	22.8
North Yorkshire	2,651	83.5	25.3
York	979	74.5	16.5
Craven	184	78.6	17.9
Hambleton	317	87.6	17.8
Harrogate	610	118.6	44.5
Richmondshire	185	88.8	12.1
Ryedale	196	122.7	28.1
Scarborough	694	48.3	16.8
Selby	464	94.1	29.6

Source: Nomis

Claimant Count On-Flow May 2009

	On-flow June 09	Annual % Change	Monthly % Change
England	274,092	50.1	3.3
Yorkshire and Humber	31,576	45.1	5.0
York and North Yorkshire	3,003	54.4	5.4
North Yorkshire	2,098	48.8	5.6
York	905	69.2	5.0
Craven	159	39.5	3.9
Hambleton	245	52.2	-5.4
Harrogate	466	49.4	4.5
Richmondshire	164	84.3	36.7
Ryedale	154	54.0	11.6
Scarborough	557	35.9	5.5
Selby	354	58.0	3.2

Source: Nomis

Ratio of Claimant Count Off-flow to On-flow

	Jun-08	May-09	Jun-09	Annual Change	Monthly Change
England	1.0	1.03	0.96	-0.06	-0.07
Yorkshire and Humber	1.0	1.06	0.99	-0.06	-0.07
York and North Yorkshire	1.0	0.96	0.83	-0.14	-0.13
North Yorkshire	1.0	0.94	0.79	-0.18	-0.15
York	1.0	1.03	0.92	-0.03	-0.11
Craven	1.1	0.98	0.86	-0.24	-0.12
Hambleton	1.0	0.96	0.77	-0.18	-0.19
Harrogate	1.1	1.06	0.76	-0.35	-0.30
Richmondshire	0.9	0.73	0.89	-0.02	0.16
Ryedale	1.1	0.9	0.79	-0.35	-0.11
Scarborough	0.9	0.81	0.80	-0.07	-0.01
Selby	0.9	0.96	0.76	-0.17	-0.20

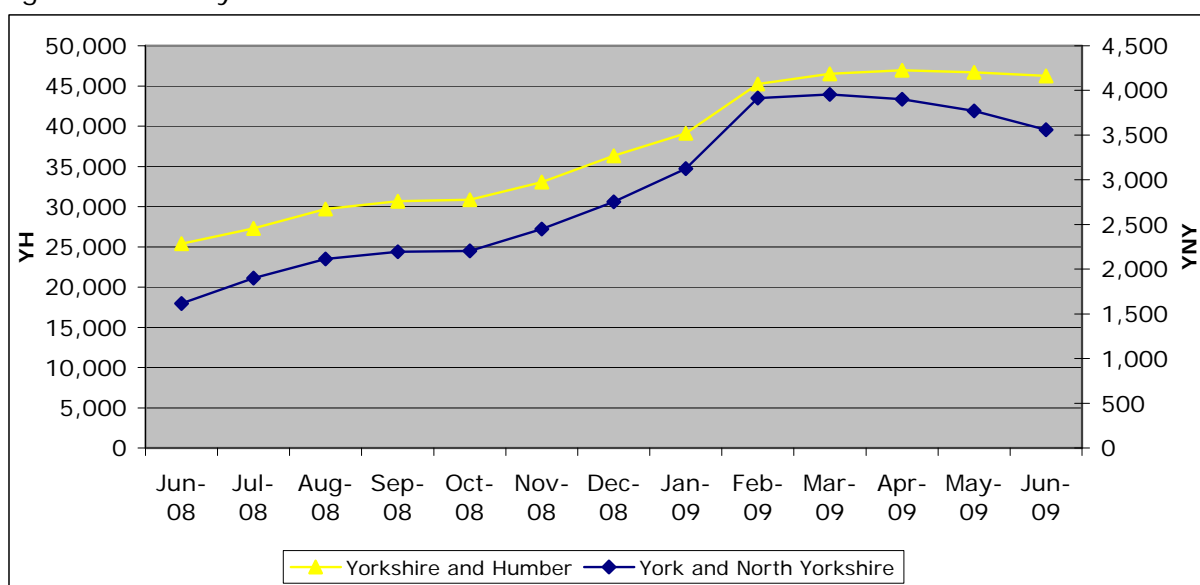
Source: Nomis

Claimant Count 18-24 year olds

	June 2009	Annual Change	Annual % Change	Monthly % Change
England	368790	163770	79.9	-1.6
Yorkshire and Humber	46250	20870	82.2	-0.9
York and North Yorkshire	3560	1945	120.4	-5.6
North Yorkshire	2485	1330	115.2	-7.8
York	1080	620	134.8	0.0
Craven	155	85	121.4	-11.4
Hambleton	320	160	100.0	-4.5
Harrogate	490	305	164.9	-9.3
Richmondshire	185	100	117.6	0.0
Ryedale	185	120	184.6	-9.8
Scarborough	680	305	81.3	-8.7
Selby	465	260	126.8	-8.8

Source: Nomis

Figure: 18 – 24 yr old claimants



Business Activity

Business Confidence

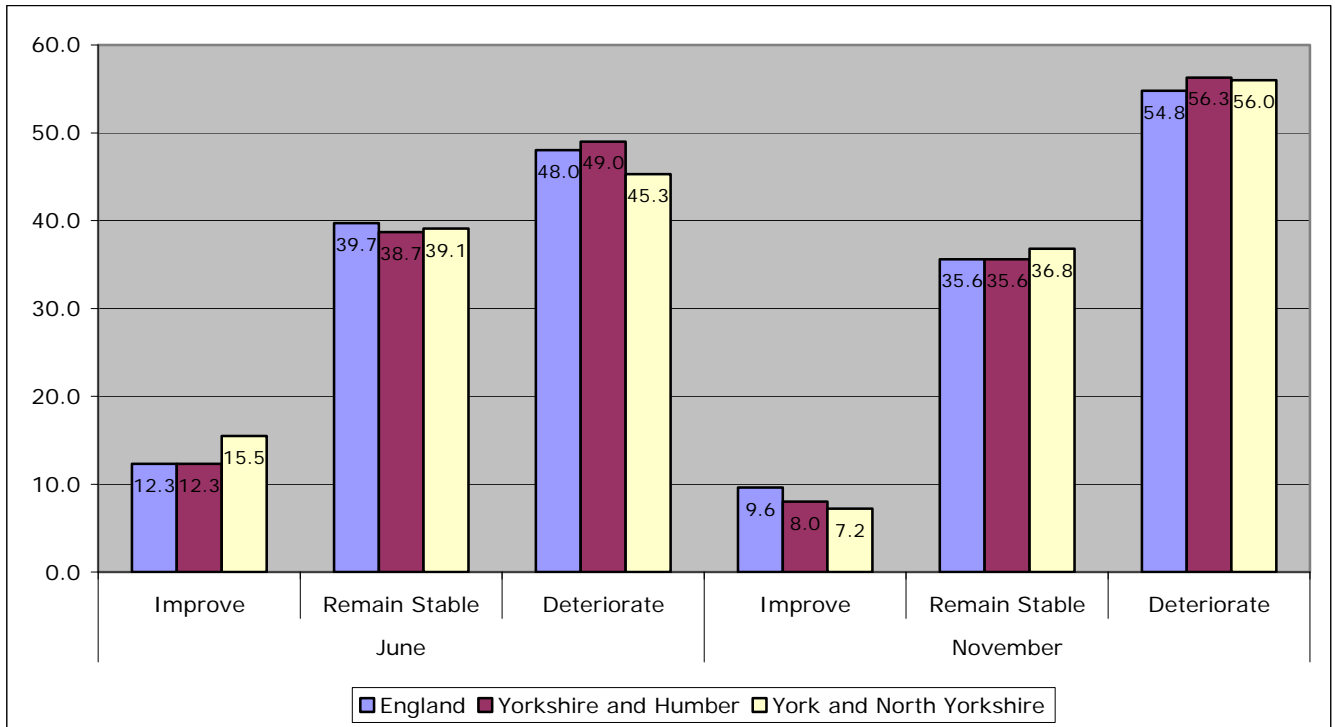
The National Business Survey is a large scale research project conducted by Ipsos Mori on behalf of the RDA Network and Invest Northern Ireland. It explores perceptions of businesses across England and Northern Ireland, on current and recent business conditions as well as looking forward to potential issues and views on projected change over the coming months. The survey asks a series of questions on business confidence, a number of which are presented here.

Over the next 12 months do you expect the business climate in which your business operates to generally improve, remain stable, or deteriorate?

	June			November		
	Improve	Remain Stable	Deteriorate	Improve	Remain Stable	Deteriorate
England	12.3	39.7	48.0	9.6	35.6	54.8
Yorkshire and Humber	12.3	38.7	49.0	8.0	35.6	56.3
York and North Yorkshire	15.5	39.1	45.3	7.2	36.8	56.0

Source: 'National Business Survey, November 2008, (Ipsos Mori on behalf of England's Regional Development Agencies and Invest Northern Ireland)'

Figure:



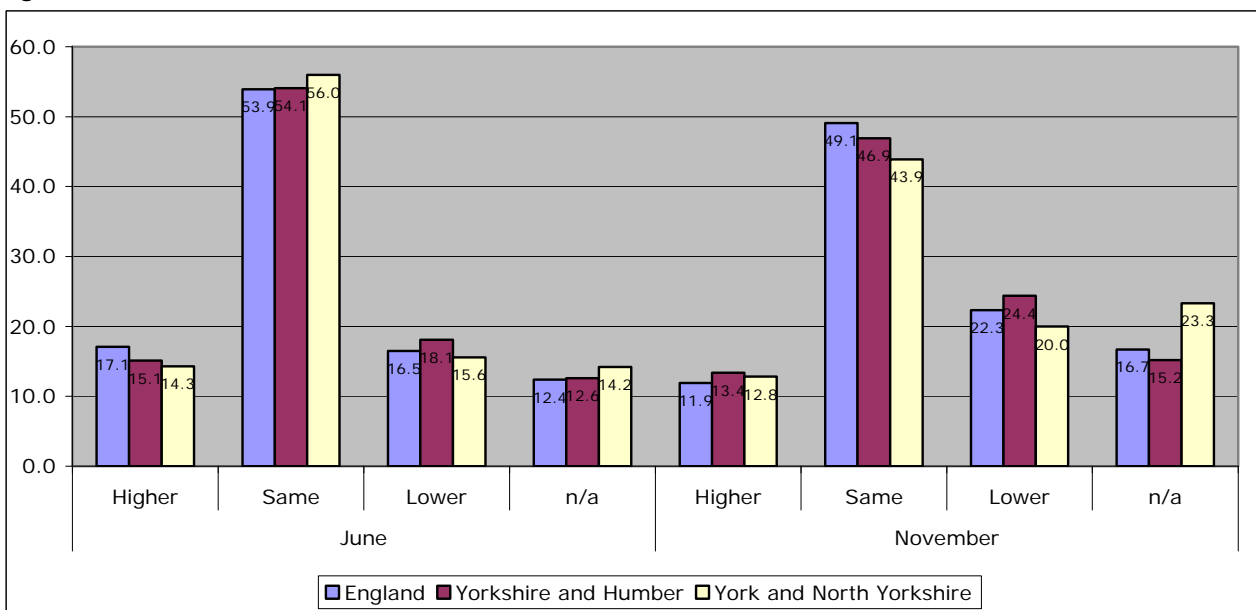
Source: 'National Business Survey, November 2008, (Ipsos Mori on behalf of England's Regional Development Agencies and Invest Northern Ireland)'

What has been the trend in the last 12 months with regard to numbers employed?

	June				November			
	Higher	Same	Lower	n/a	Higher	Same	Lower	n/a
England	17.1	53.9	16.5	12.4	11.9	49.1	22.3	16.7
Yorkshire and Humber	15.1	54.1	18.1	12.6	13.4	46.9	24.4	15.2
York and North Yorkshire	14.3	56.0	15.6	14.2	12.8	43.9	20.0	23.3

Source: 'National Business Survey, November 2008, (Ipsos Mori on behalf of England's Regional Development Agencies and Invest Northern Ireland)'

Figure:



N.B. The National Business Survey data is a sample and subject to some survey error. Sample sizes are smaller at more local levels therefore the confidence intervals are higher. The sample size was also smaller in November than it was in June.

Tourism

Number of Visits to Leisure Attractions in York and North Yorkshire

	No of Attractions Responding	Total Previous Year	Total	% Change
Jul-08	54	621521	600900	-3%
Aug-08	56	832091	843934	1%
Sep-08	56	530743	446212	-16%
Oct-08	50	422394	381563	-10%
Nov-08	40	197447	184794	-6%
Dec-08	36	194004	150948	-22%
Jan-09	58	153038	120111	-22%
Feb-09	44	-	-	-16%
Mar-09	63	-	-	-11%
Apr-09	54	-	-	47%
May-09	54	-	-	11.1%

Number of Visits to Leisure Attractions in Yorkshire and Humber

Date	No of Attractions Responding	Total Previous Year	Total	% Change
Jul-08	86	1062250	904063	-15%
Aug-08	91	1538661	1394837	-9%
Sep-08	111	930657	759782	-18%
Oct-08	101	836270	756442	-10%
Nov-08	97	480975	472685	-2%
Dec-08	80	436028	325557	-25%
Jan-09	103	410433	300082	-27%
Feb-09	97	-	-	-5%
Mar-09	118	-	-	-19%
Apr-09	108	-	-	33%
May-09	116	-	-	0%

Source: Visitor Attraction Monitor, Yorkshire tourist board

Business Advice

Number of Businesses requesting re-profiling of NNDR

Source: Local Authorities

	2007	2008
Craven		
Hambleton		
Harrogate		
Richmondshire		
Ryedale		
Scarborough		
Selby		
York		

Town Centre Activity

Footfall

	TBC
Craven	
Hambleton	
Harrogate	
Richmondshire	
Ryedale	
Scarborough	
Selby	
York	

Source: Local Authorities

Number of Vacant Retail Premises

	Mar-08		Mar-09	
	no.	%	no.	%
Craven				
Hambleton				
Harrogate				
Richmondshire				
Ryedale				
Scarborough				
Selby				
York				

Source: Local Authorities

Car Parking

Total Revenue/Visits – TBC

	Q1 2008	Q2 2008	Q3 2008	Q4 2008	Q1 2009
Craven					
Hambleton					
Harrogate					
Richmondshire					
Ryedale					
Scarborough					
Selby					
York					

Source: Local Authorities

Housing

Land Registry House Price Index

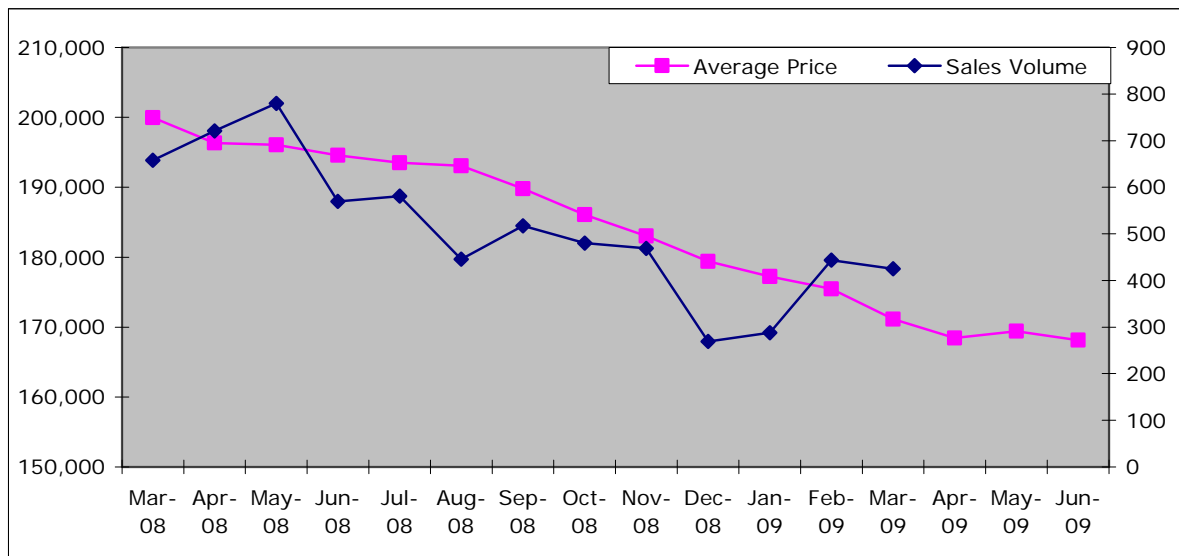
North Yorkshire

	Index	Average Price	Monthly Change	Annual Change	Sales Volume
Mar-08	294.7	199,984	0.1	4.2	586
Apr-08	289.4	196,331	-1.8	1.5	658
May-08	289	196,081	-0.1	0.9	721
Jun-08	286.8	194,589	-0.8	-0.6	780
Jul-08	285.2	193,512	-0.6	-1.8	570
Aug-08	284.6	193,082	-0.2	-2.5	581
Sep-08	279.7	189,780	-1.7	-4.5	446
Oct-08	274.2	186,068	-2	-6.7	517
Nov-08	269.7	183,029	-1.6	-8.2	480
Dec-08	264.4	179,397	-2	-10.5	469
Jan-09	261.2	177,253	-1.2	-11.6	269
Feb-09	258.6	175,457	-1	-12.2	288
Mar-09	252.2	171,122	-2.5	-14.4	444
Apr-09	248.3	168,447	-1.6	-14.2	425
May-09	249.7	169,405	0.6	-13.6	-
Jun-09	247.8	168,108	-0.8	-13.6	-

Source: Land Registry, House Price Index

- Data not available

Figure: North Yorkshire – Average Price & Sales Volume



Source: Land Registry, House Price Index

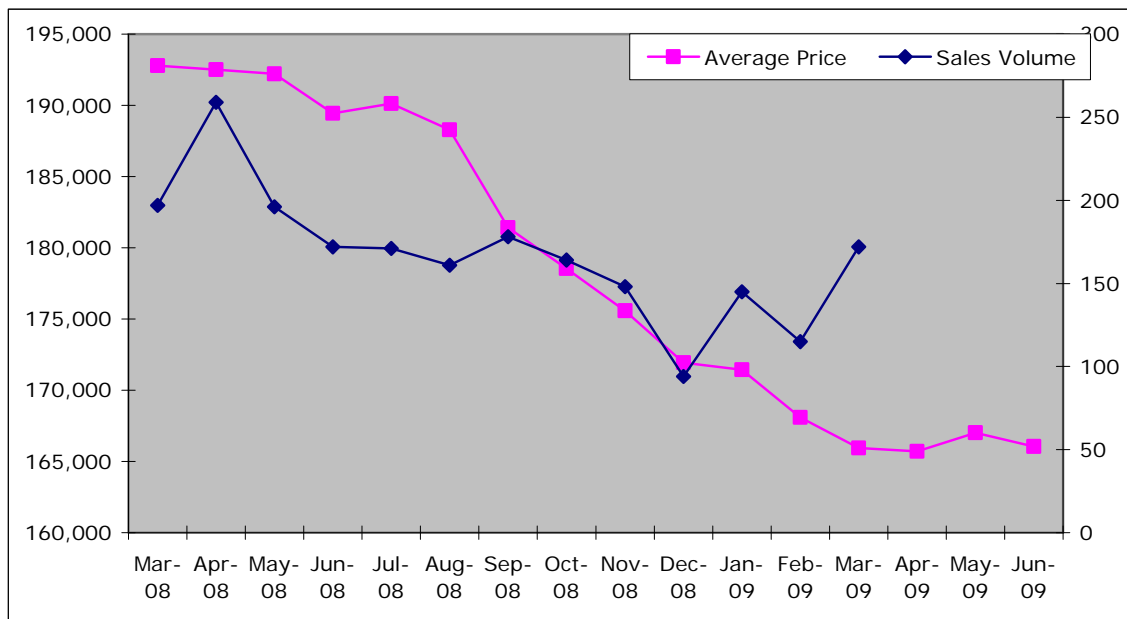
Land Registry House Price Index

York

	Index	Average Price	Monthly Change	Annual Change	Sales Volume
Mar-08	295.9	192,795	-0.6	2.2	186
Apr-08	295.4	192,518	-0.1	0.9	197
May-08	295	192,220	-0.2	0.5	259
Jun-08	290.7	189,443	-1.4	-1.4	196
Jul-08	291.8	190,127	0.4	-1.3	172
Aug-08	288.9	188,273	-1	-2.8	171
Sep-08	278.4	181,427	-3.6	-6.9	161
Oct-08	274	178,542	-1.6	-8.4	178
Nov-08	269.4	175,579	-1.7	-9.3	164
Dec-08	263.9	171,938	-2.1	-11.2	148
Jan-09	263.1	171,429	-0.3	-11.2	94
Feb-09	257.9	168,084	-2	-13.3	145
Mar-09	254.6	165,937	-1.3	-13.9	115
Apr-09	254.3	165,716	-0.1	-13.9	172
May-09	256.3	167,019	0.8	-13.1	-
Jun-09	254.8	166,041	-0.6	-12.4	-

Source: Land Registry, House Price Index
 - Data not available

Figure: York – Average Price & Sales Volume



Source: Land Registry

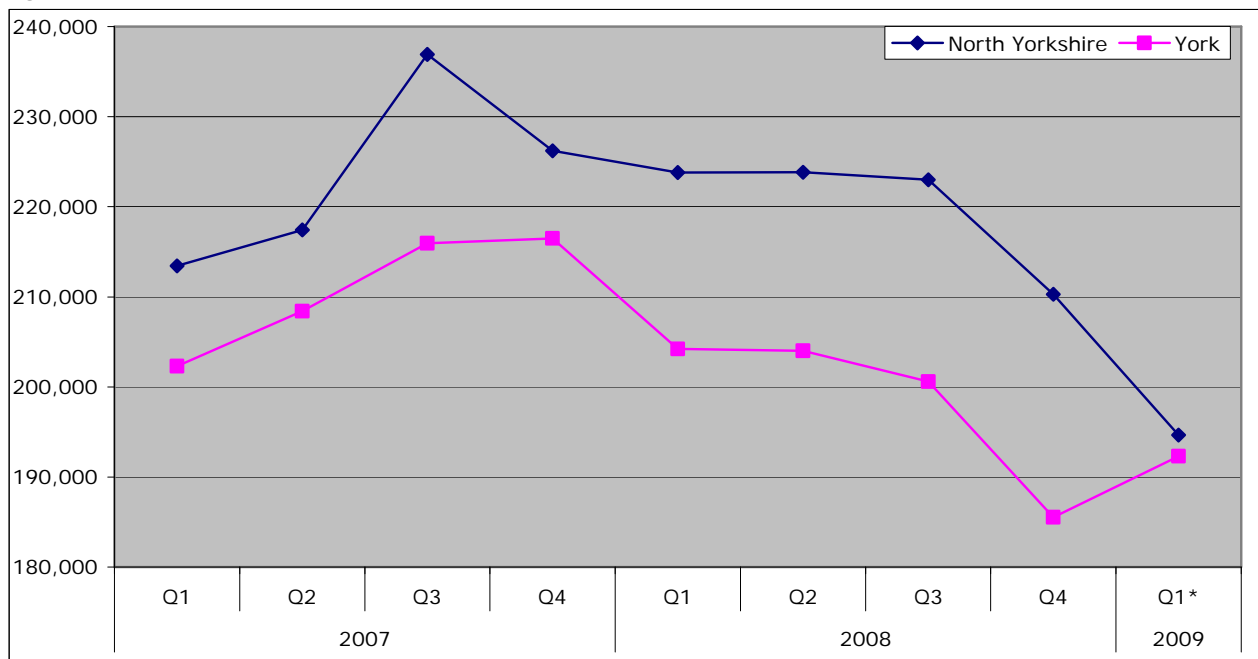
Mean House Prices

	2007				2008				2009	% Change on previous year	% Change on previous Quarter
	Q1	Q2	Q3	Q4	Q1	Q2	Q3	Q4	Q1*		
England	213,240	218,899	232,345	224,467	221,270	222,441	227,182	207,372	201,133	-9.1%	-3.0%
Yorkshire & Humber	150,665	158,684	163,743	163,054	155,180	159,859	156,608	150,688	141,372	-8.9%	-6.2%
North Yorkshire	213,437	217,433	236,905	226,204	223,812	223,835	223,002	210,287	194,672	-13.0%	-7.4%
York	202,308	208,403	215,939	216,474	204,209	204,004	200,603	185,531	192,308	-5.8%	3.7%
Craven	209,131	220,263	222,848	211,645	206,501	211,979	213,589	202,136	168,476	-18.4%	-16.7%
Hambleton	233,945	232,159	254,320	235,670	231,621	248,417	240,533	254,409	198,812	-14.2%	-21.9%
Harrogate	254,301	263,615	292,125	278,476	280,397	286,204	269,747	244,392	239,044	-14.7%	-2.2%
Richmondshire	211,352	228,250	229,411	241,145	210,311	230,944	223,971	190,838	204,950	-2.5%	7.4%
Ryedale	227,507	225,265	257,519	242,618	266,365	225,208	239,240	233,013	205,913	-22.7%	-11.6%
Scarborough	164,320	165,638	171,870	170,345	179,150	169,107	167,178	172,640	150,799	-15.8%	-12.7%
Selby	192,046	192,994	210,265	202,949	185,217	184,721	200,788	174,182	171,765	-7.3%	-1.4%

Source: DCLG

* Data is provisional

Figure: Mean House Prices, North Yorkshire and York



Source: DCLG

* Data is provisional

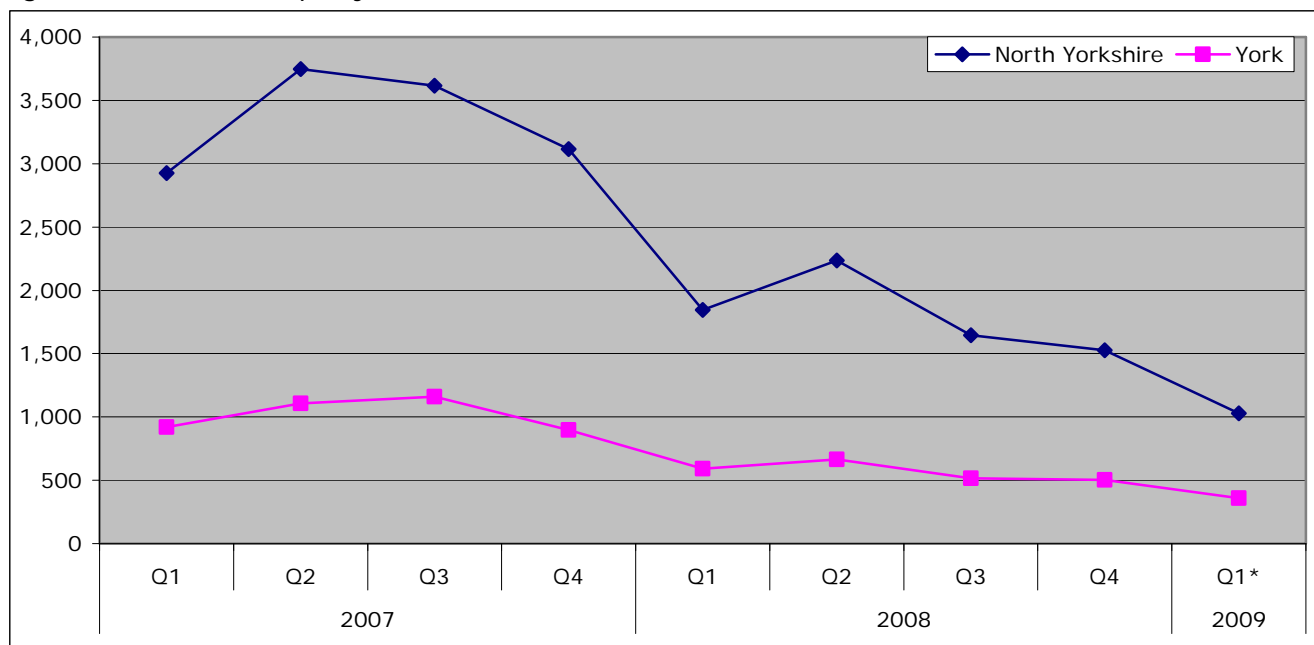
Property Sales

	2007				2008				2009	% Change on previous year	% Change on previous Quarter
	Q1	Q2	Q3	Q4	Q1	Q2	Q3	Q4	Q1*		
England	269,911	316,630	329,208	274,562	173,560	181,420	138,533	116,327	83,390	-52.0%	-28.3%
Yorkshire & Humber	26,901	31,872	31,678	27,169	17,276	18,717	14,017	12,059	8,115	-53.0%	-32.7%
York & North Yorkshire	3,846	4,856	4,777	4,013	2,436	2,902	2,162	2,030	1,389	-43.0%	-31.6%
North Yorkshire	2,925	3,748	3,617	3,115	1,845	2,237	1,646	1,526	1,029	-44.2%	-32.6%
York	921	1,108	1,160	898	591	665	516	504	360	-39.1%	-28.6%
Craven	265	306	325	249	173	223	161	163	90	-48.0%	-44.8%
Hambleton	356	531	417	373	222	292	244	202	139	-37.4%	-31.2%
Harrogate	805	958	1,052	828	489	537	443	352	310	-36.6%	-11.9%
Richmondshire	179	243	242	242	133	188	94	94	58	-56.4%	-38.3%
Ryedale	209	255	269	233	124	178	127	146	66	-46.8%	-54.8%
Scarborough	644	804	770	704	448	485	381	347	235	-47.5%	-32.3%
Selby	467	651	542	486	256	334	196	222	131	-48.8%	-41.0%

Source: DCLG

* Data is provisional

Figure: Number of Property Sales, North Yorkshire and York



Source: DCLG

* Data is provisional

Mortgage and Landlord Possession Claims/Orders

The following data indicates the number of claims/orders that have been issued at County Court level for possession of properties either under mortgage or landlord possession.

N.B. Important note - Introduction of Mortgage Pre-Action Protocol (MPAP) on 19 November 2008.

A new mortgage pre action protocol (MPAP), was introduced for possession claims in the County Courts with effect from 19 November 2008.

Evidence from administrative records from October to December 2008 suggests that this date coincided with a fall of around 50% in the daily and weekly numbers of new mortgage repossession claims being issued in the courts. It therefore seems highly likely that the launch of the MPAP has led to a marked fall in the number of new claims being issued during the latter part of the period covered by this bulletin. However, given the apparent cause, users should exercise caution in drawing broader inferences from the fall in mortgage possession claims issued in Q4 2008.

Mortgage possession orders are typically made around 8 weeks after the corresponding claims are issued. For this reason, the impact of the MPAP is expected to occur during the early months of 2009. At this early stage is not clear to what extent the launch of the MPAP has led to a permanent fall in the numbers of new mortgage possession claims being issued, as opposed to some merely being postponed. This will become clearer as statistics for 2009 are published.

Mortgage Possession Claims Issued

	Q1 2008	Q2 2008	Q3 2008	Q4 2008	Q1 2009	% change since Q1 2008	% change since Q4 2008
Yorkshire & Humber	4,038	3,928	3,962	2,669	2,476	-39%	-7%
York & North Yorkshire	360	337	358	258	237	-34%	-8%
Harrogate	59	56	44	45	40	-32%	-11%
Scarborough	120	97	138	93	78	-37%	-16%
Skipton	33	41	29	20	24	-33%	20%
York	148	143	147	100	95	-37%	-5%

Source: Ministry of Justice

Mortgage Possession Orders Issued

	Q1 2008	Q2 2008	Q3 2008	Q4 2008	Q1 2009	% change since Q1 2008	% change since Q4 2008
Yorkshire & Humber	-	-	-	-	1,821	-	-
York & North Yorkshire	-	-	-	-	152	-	-
Harrogate	-	-	-	-	30	-	-
Scarborough	90	80	116	113	57	-37%	-50%
Skipton	29	32	31	27	15	-48%	-44%
York	100	106	93	123	50	-50%	-59%

Source: Ministry of Justice

Landlord Possession Claims issued

	Q1 2008	Q2 2008	Q3 2008	Q4 2008	Q1 2009	% change since Q1 2008	% change since Q4 2008
Yorkshire & Humber	2,671	2,656	2,434	2,438	2,370	-11%	-2.8%
York & North Yorkshire	280	252	288	266	232	-17%	-12.8%
Harrogate	46	48	56	40	33	-28%	-17.5%
Scarborough	82	64	81	85	60	-27%	-29.4%
Skipton	15	8	16	18	12	-20%	-33.3%
York	137	132	135	123	127	-7%	3.3%

Source: Ministry of Justice

Landlord Possession Orders issued

	Q1 2008	Q2 2008	Q3 2008	Q4 2008	Q1 2009	% change since Q1 2008	% change since Q4 2008
Yorkshire & Humber	-	-	-	-	2,403	-	-
York & North Yorkshire	-	-	-	-	233	-	-
Harrogate	-	-	-	-	44	-	-
Scarborough	76	52	69	75	70	-8%	-7%
Skipton	16	5	13	12	12	-25%	0%
York	110	75	106	116	107	-3%	-8%

Source: Ministry of Justice

Planning

Total Planning Decisions

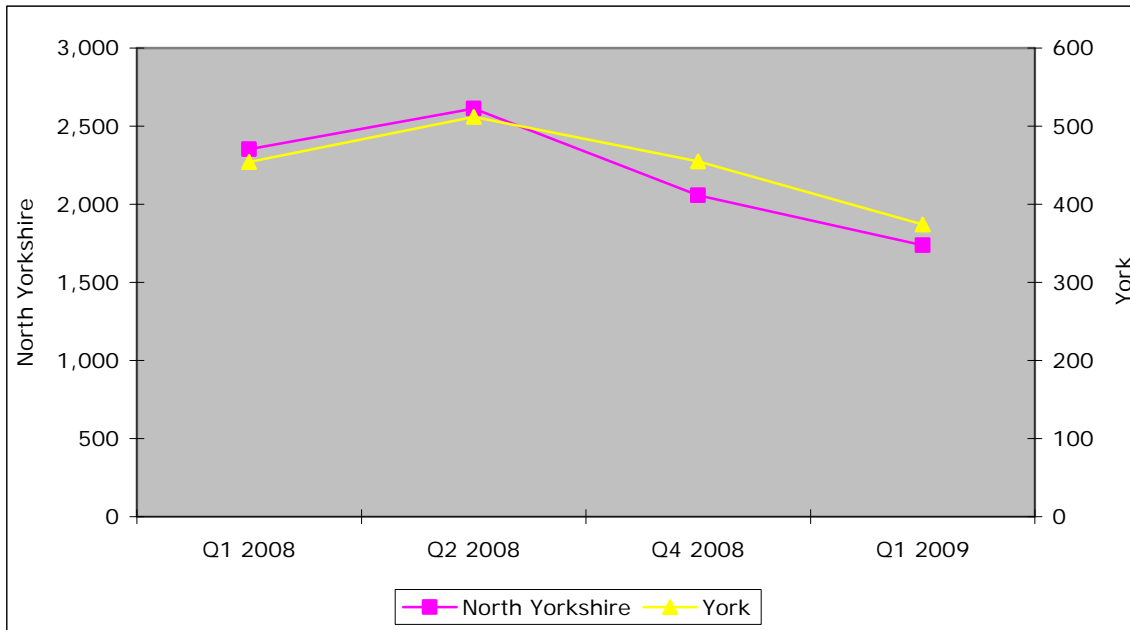
	Q1 2008	Q2 2008	Q3 2008	Q4 2008	Q1 2009	Annual Change		Quarterly Change	
England	131,704	144,700	-	115,489	93,100	-38,604	-29.3%	-22,389	-19.4%
Yorkshire and Humber	11,534	12,100	-	9,937	7,800	-3,734	-32.4%	-2,137	-21.5%
York and North Yorkshire	2,806	3,125	-	2,513	2,111	-695	-24.8%	-402	-16.0%
North Yorkshire	2,352	2,613	2,459	2,058	1,737	-615	-26.1%	-321	-15.6%
York	454	512	#	455	374	-80	-17.6%	-81	-17.8%
Craven	170	193	200	117	121	-49	-28.8%	4	3.4%
Hambleton	323	399	360	300	278	-45	-13.9%	-22	-7.3%
Harrogate	642	672	561	613	461	-181	-28.2%	-152	-24.8%
Richmondshire	154	183	199	141	138	-16	-10.4%	-3	-2.1%
Ryedale	188	228	258	180	155	-33	-17.6%	-25	-13.9%
Scarborough	276	265	240	186	165	-111	-40.2%	-21	-11.3%
Selby	260	296	276	213	168	-92	-35.4%	-45	-21.1%
North York Moors	195	197	216	166	143	-52	-26.7%	-23	-13.9%
Yorkshire Dales	144	180	149	142	108	-36	-25.0%	-34	-23.9%

Source: Statistics of Planning Decisions, CLG

Data not submitted

- Data cannot be calculated

Figure: Total Planning Decisions, North Yorkshire/York



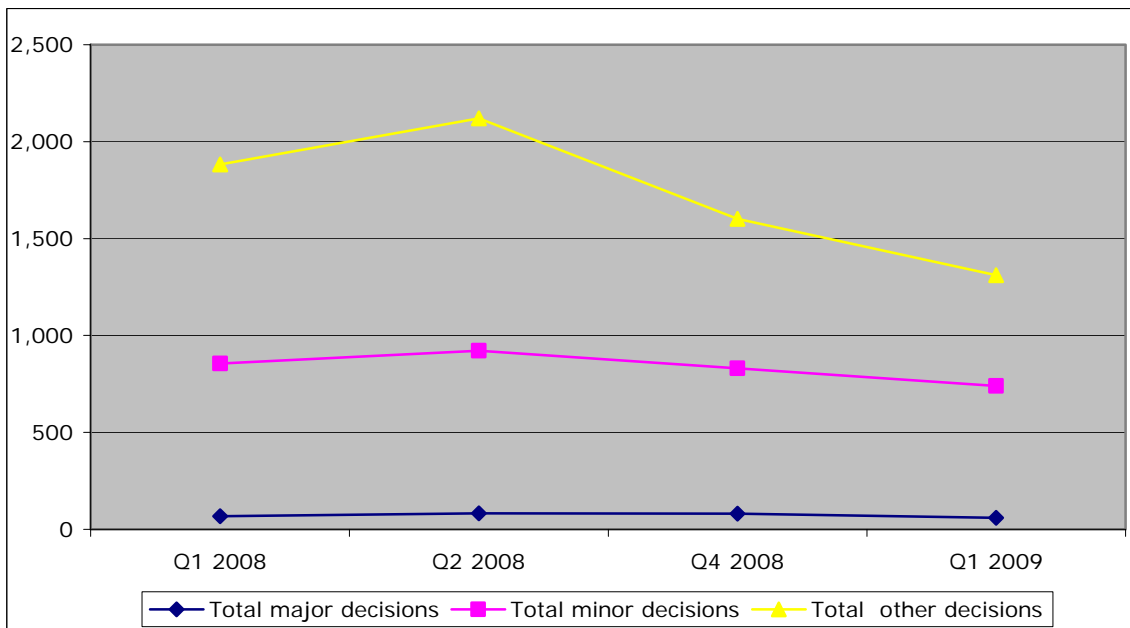
Source: Statistics of Planning Decisions, CLG
 N.B. The number of decisions made in Q3 2008 is not available and therefore excluded from the chart.

Breakdown of planning decisions by type in York and North Yorkshire

	Q1 2008	Q2 2008	Q3 2008	Q4 2008	Q1 2009
Total major decisions	67	83	-	81	60
Total minor decisions	856	921	-	830	740
Total other decisions	1,883	2,121	-	1,602	1,311
Total	2,806	3,125	-	2,513	2,111

Source: Statistics of Planning Decisions, CLG

Figure: Planning Decisions by type, York and North Yorkshire



Source: Statistics of Planning Decisions, CLG
 N.B. The total number of decisions made in Q3 2008 is unknown and therefore excluded from the chart.

Breakdown of planning decisions by type, North Yorkshire

	Q1 2008	Q2 2008	Q3 2008	Q4 2008	Q1 2009
Total major decisions	58	66	54	69	50
Total minor decisions	750	799	807	700	630
Total other decisions	1,544	1,748	1,598	1,289	1057
Total	2,352	2,613	2,459	2,058	1737

Source: Statistics of Planning Decisions, CLG

Breakdown of planning decisions by type, York

	Q1 2008	Q2 2008	Q3 2008	Q4 2008	Q1 2009
Total major decisions	9	17	#	12	10
Total minor decisions	106	122	#	130	110
Total other decisions	339	373	#	313	254
Total	454	512	#	455	374

Source: Statistics of Planning Decisions, CLG

Data not submitted

Benefits

Number of claims made for Council Tax and Housing Benefit

	Q1 2008	Q2 2008	Q3 2008	Q4 2008	Q1 2009
Craven					
Hambleton					
Harrogate					
Richmondshire					
Ryedale					
Scarborough					
Selby					
York					

Source: Ministry of Justice

Community and Voluntary Sector

Data to be added in August