

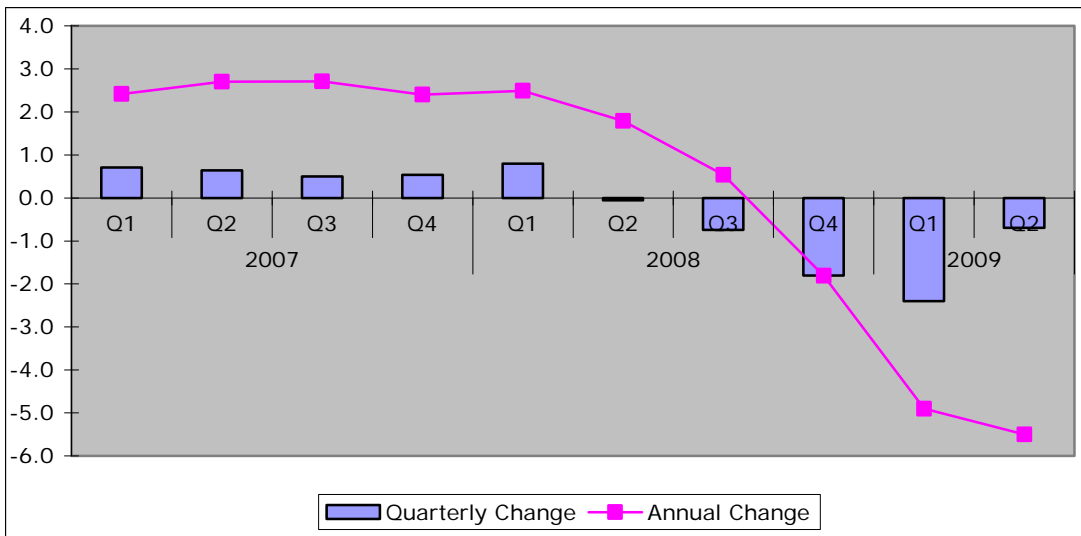
National Picture

Key Indicators	July 2009	August 2009	Change
Inflation figures - CPI	1.8	1.6	-0.2
Inflation figures - RPI	-1.4	-1.3	0.1
New Businesses - VAT Registrations	17,047	14,368	-2,679 -15.7%
VAT De-registrations	17,050	15,617	-1,433 -8.4%

Source: ONS, UK Trade Info

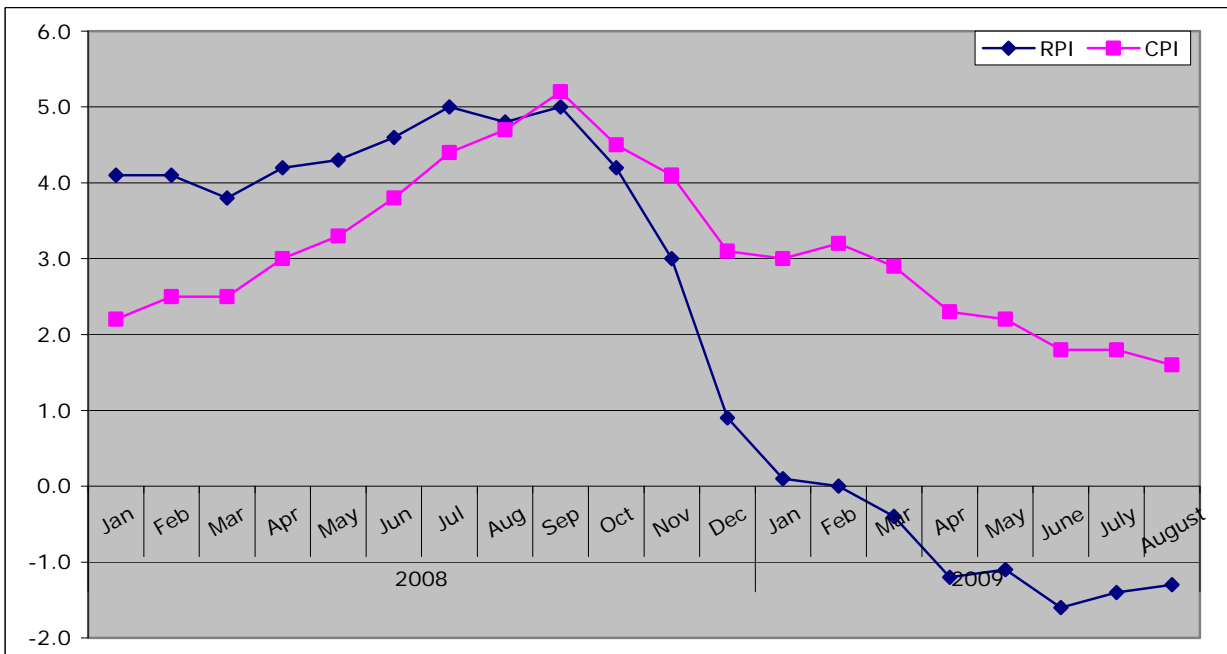
◆ Provisional estimates suggest that GDP contracted by 0.7% in Q2 of 2009.

Figure: Change to GDP



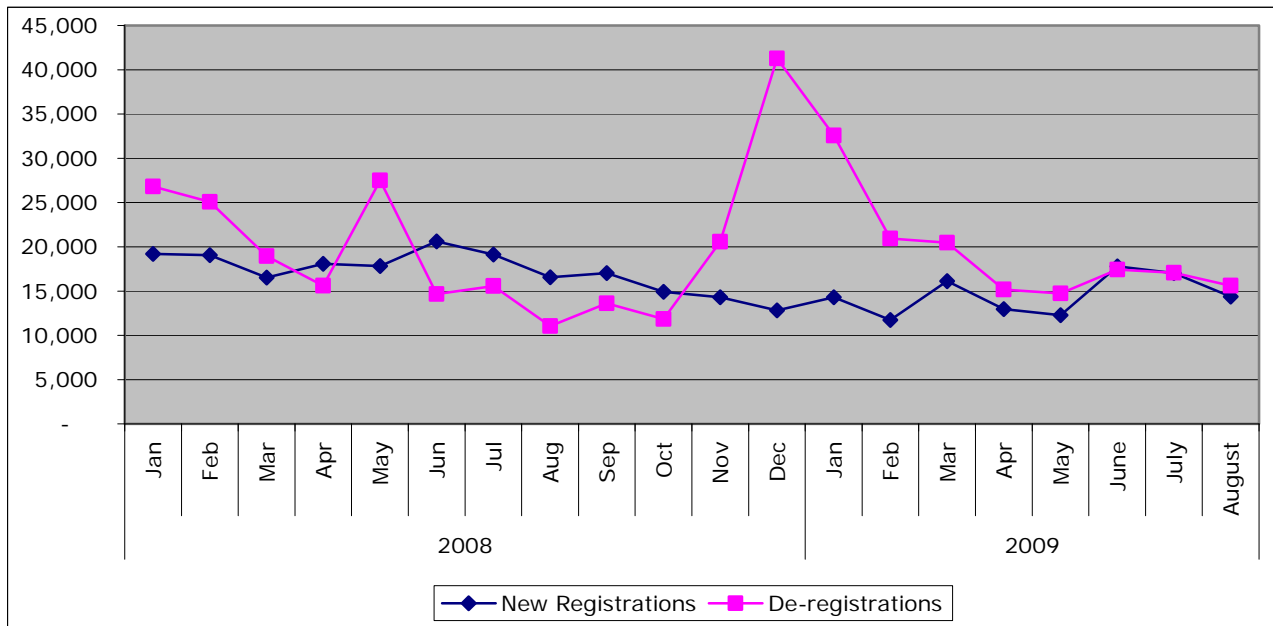
Source: ONS

Figure: Inflation Trends



Source: ONS

Figure 1: New Business Registrations and De-Registrations



Source: UK Trade Info

Local Picture

Employment

Job Gains/Losses

Confirmed Job losses - July 2009

Company	Location	No. jobs	Type of Service
Rok	Malton	-28	Construction

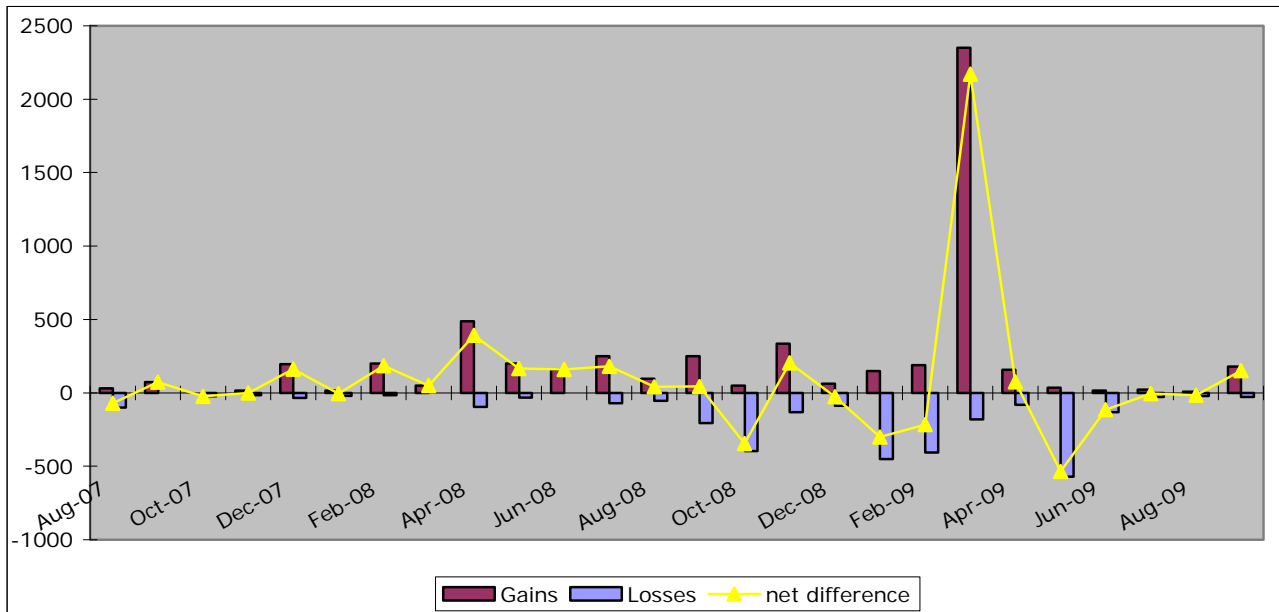
N.B 850 jobs to go at Allied Carpets across Yorkshire – exact locations not identified

Confirmed Job Gains - July 2009

Company	Location	No. Jobs	Type of Service
Tesco	Skipton	140	Distribution & retail
Conways Toymaster	Harrogate	6	Distribution & retail
Cockerills	York	33	Business services

Source: Yorkshire Futures Monthly jobs database

Figure: Jobs/Gains and net difference



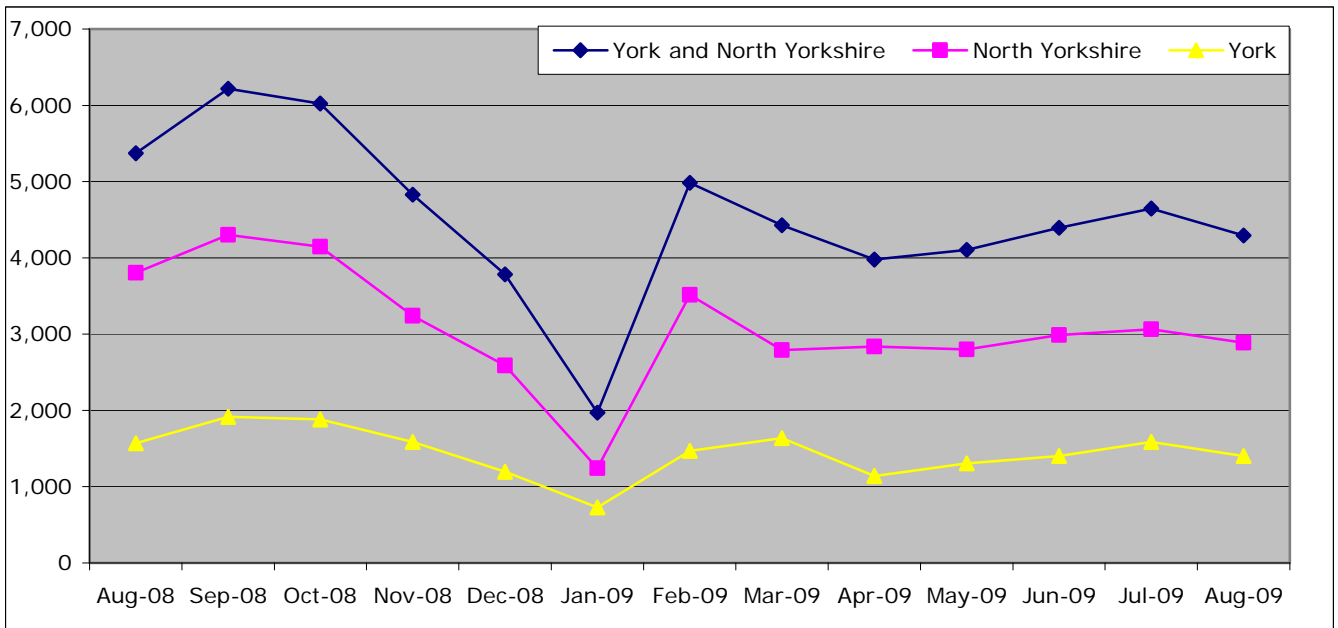
Source: Yorkshire Forward jobs database

Job Centre Plus – notified job vacancies

	August 2009	Monthly Change		Annual Change	
England	257,436	9,023	3.6%	-42,939	-14.3%
Yorkshire and Humber	28,208	2,701	10.6%	-4,261	-13.1%
York and North Yorkshire	4,293	-356	-7.7%	-1,079	-20.1%
North Yorkshire	2,889	-174	-5.7%	-915	-24.1%
York	1,403	-183	-11.5%	-165	-10.5%
Craven	250	29	13.1%	22	9.6%
Hambleton	372	27	7.8%	-208	-35.9%
Harrogate	850	-166	-16.3%	-474	-35.8%
Richmondshire	153	-51	-25.0%	-73	-32.3%
Ryedale	224	68	43.6%	-6	-2.6%
Scarborough	543	-68	-11.1%	-48	-8.1%
Selby	498	-12	-2.4%	-127	-20.3%

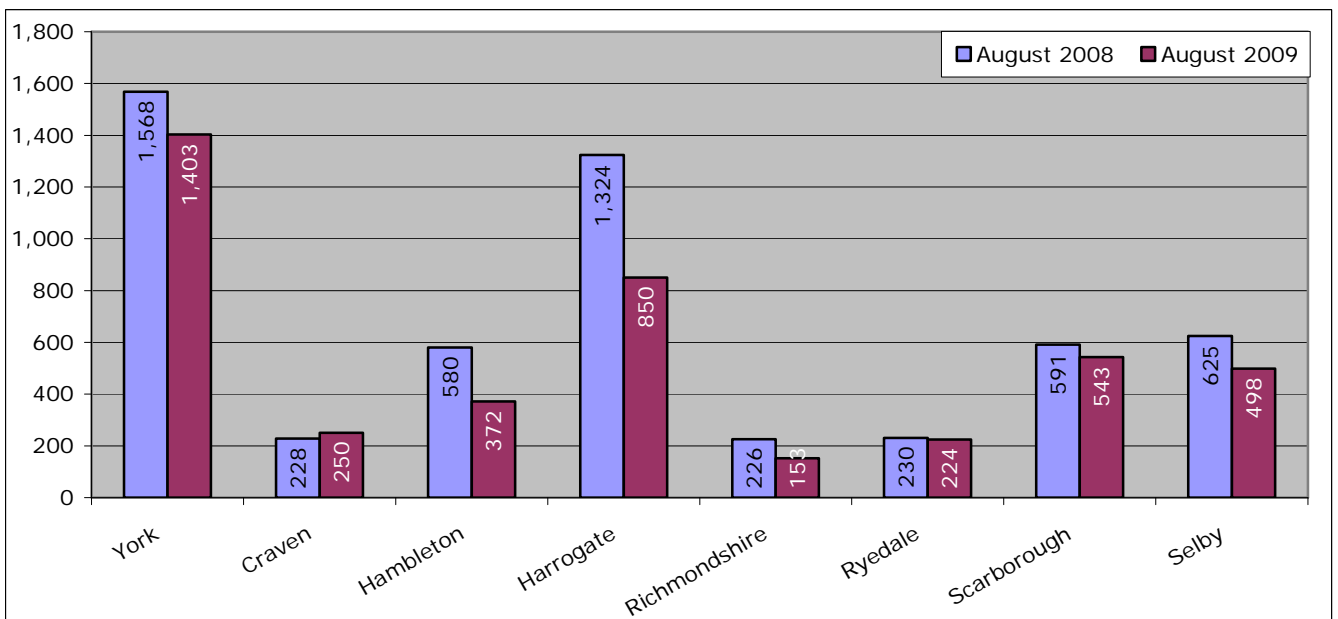
Source: Nomis

Figure: Number of vacancies trend



Source: Nomis

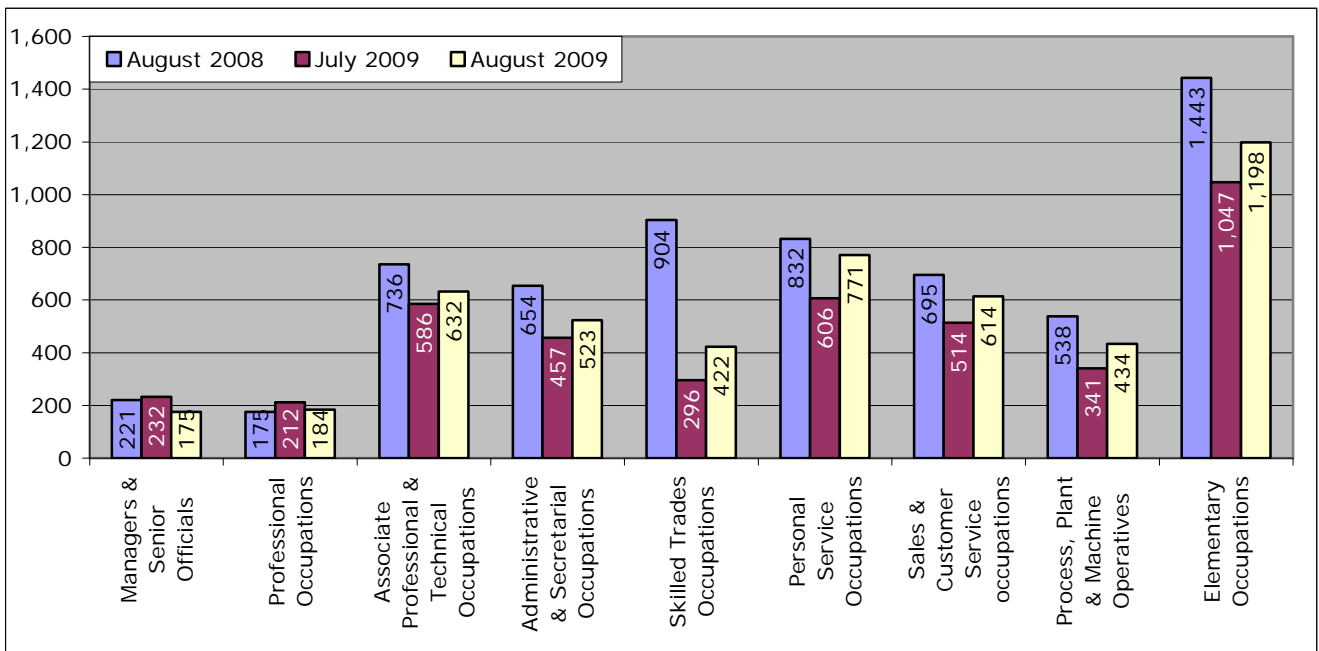
Figure: Number of Vacancies, Year on Year comparison



Source: Nomis

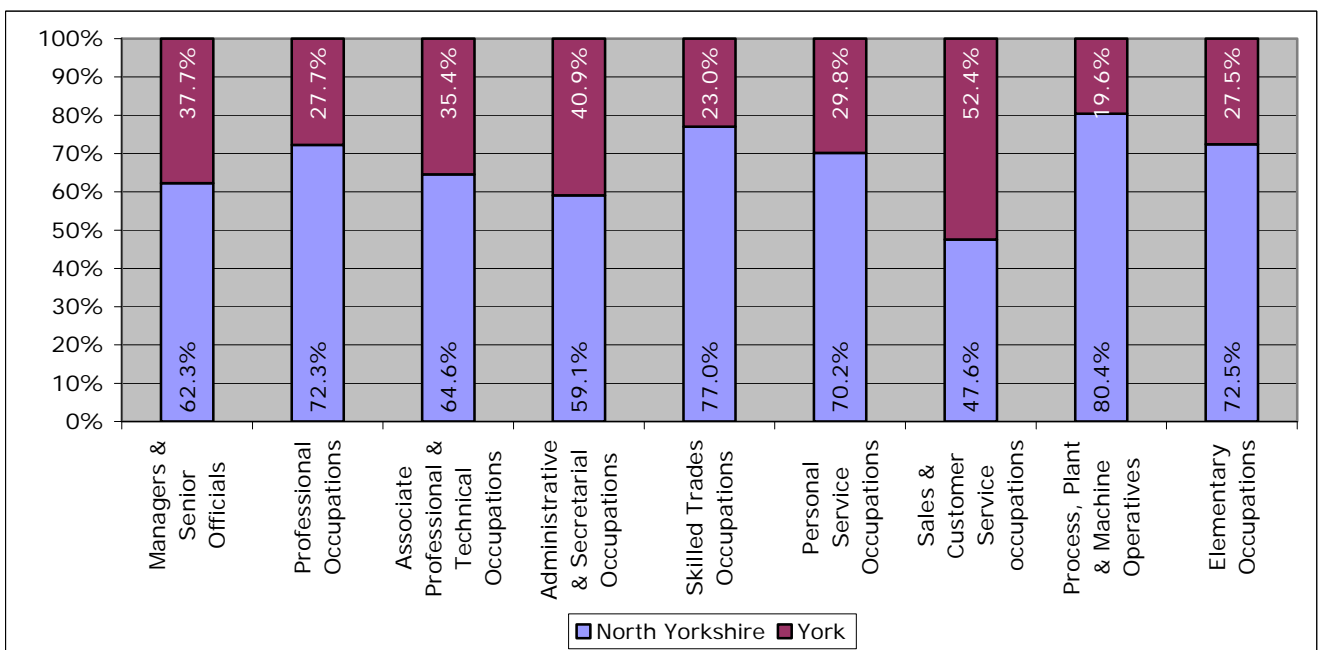
Vacancies by Occupation

Figure: Share of vacancies by occupation, York and North Yorkshire, year on year comparison



Source: Nomis

Figure: Distribution of vacancies by occupation between North Yorkshire & York, August 2009



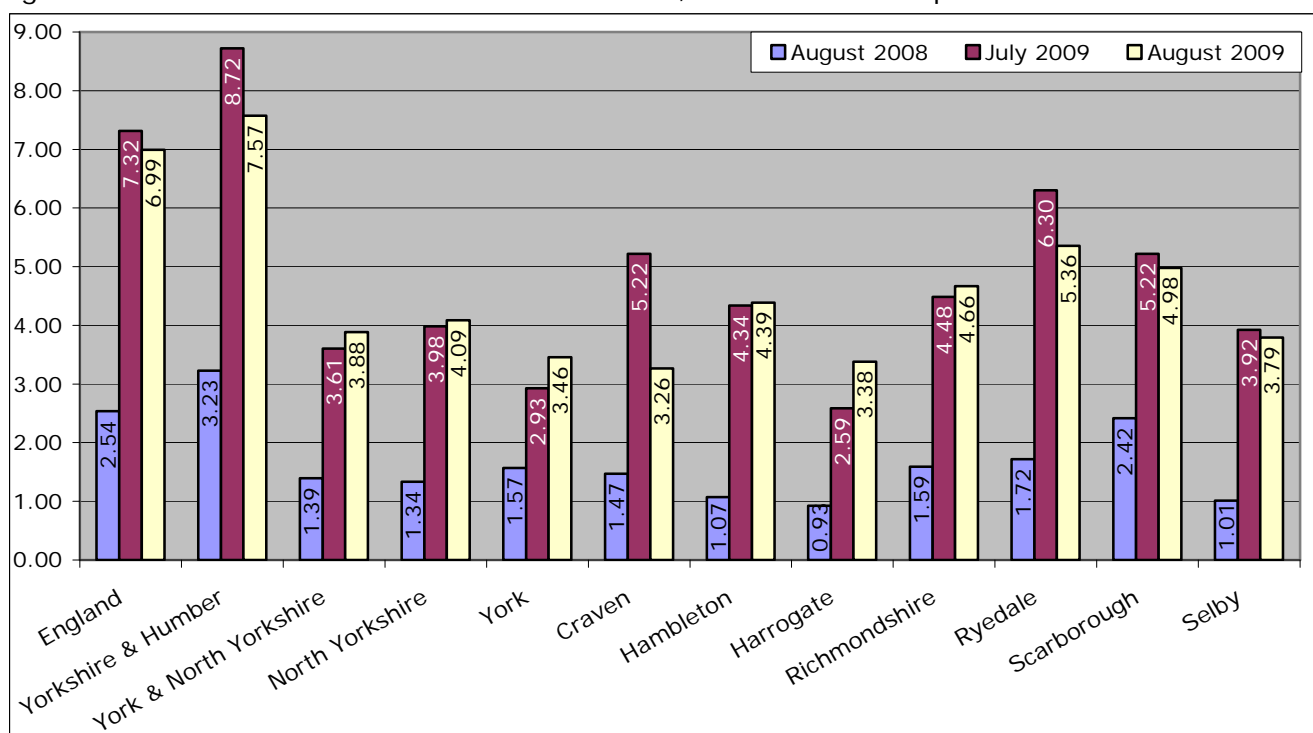
Source: Nomis

Number of Claimants to Notified Vacancies ratio

	August 2008	July 2009	August 2009	Annual Change	Monthly Change
England	2.54	7.32	6.99	4.45	-0.32
Yorkshire and Humber	3.23	8.72	7.57	4.34	-1.15
York and North Yorkshire	1.39	3.61	3.88	2.49	0.28
North Yorkshire	1.34	3.98	4.09	2.75	0.11
York	1.57	2.93	3.46	1.89	0.53
Craven	1.47	5.22	3.26	1.79	-1.96
Hambleton	1.07	4.34	4.39	3.32	0.05
Harrogate	0.93	2.59	3.38	2.46	0.79
Richmondshire	1.59	4.48	4.66	3.07	0.18
Ryedale	1.72	6.30	5.36	3.64	-0.94
Scarborough	2.42	5.22	4.98	2.56	-0.24
Selby	1.01	3.92	3.79	2.78	-0.13

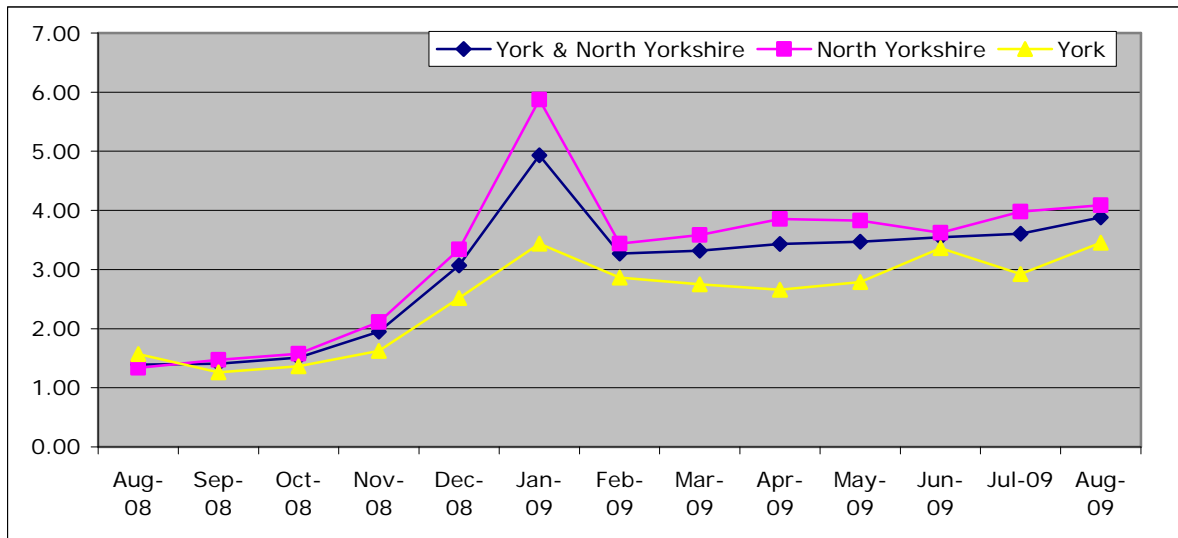
Source: Nomis

Figure: Number of Claimants to Notified Vacancies, Year on Year comparison



Source: Nomis

Figure: Number of Claimants to Notified Vacancies ratio trend



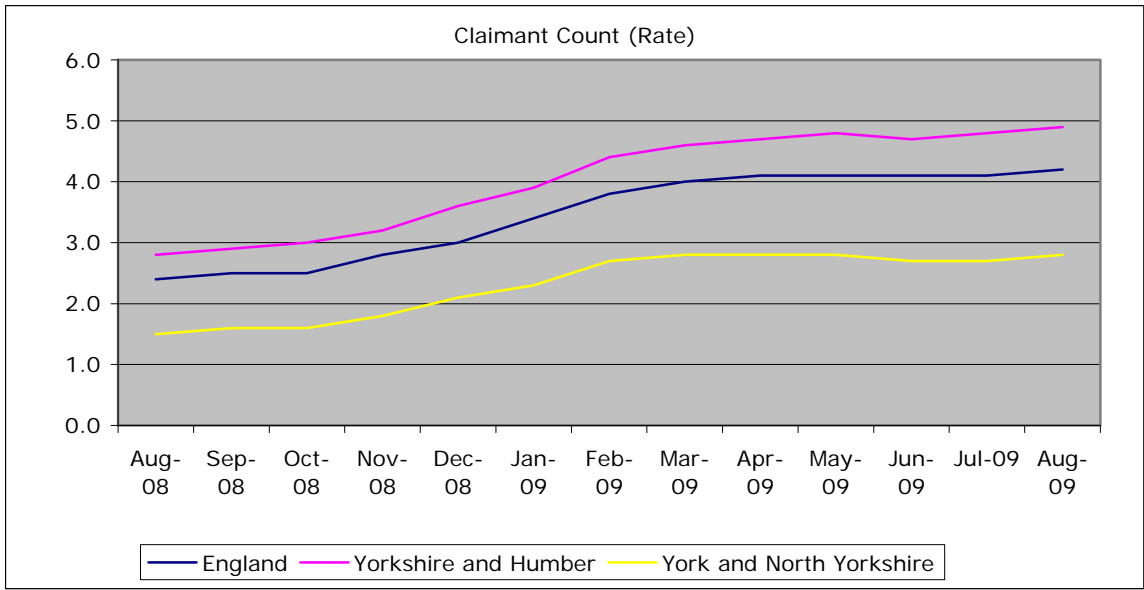
Source: Nomis

Unemployment

Total Claimant Count

	August 2009	Annual Change	Annual % Change	Monthly % Change
England	1333857	567679	74.1	1.7
Yorkshire and Humber	156537	66517	73.9	1.8
York and North Yorkshire	13283	6026	83.0	2.6
North Yorkshire	9464	4241	81.2	2.7
York	3819	1785	87.8	2.4
Craven	656	303	85.8	2.2
Hambleton	1172	543	86.3	5.5
Harrogate	2178	1079	98.2	4.5
Richmondshire	639	292	84.1	9.6
Ryedale	675	299	79.5	1.0
Scarborough	2439	823	50.9	-1.6
Selby	1705	902	112.3	3.7

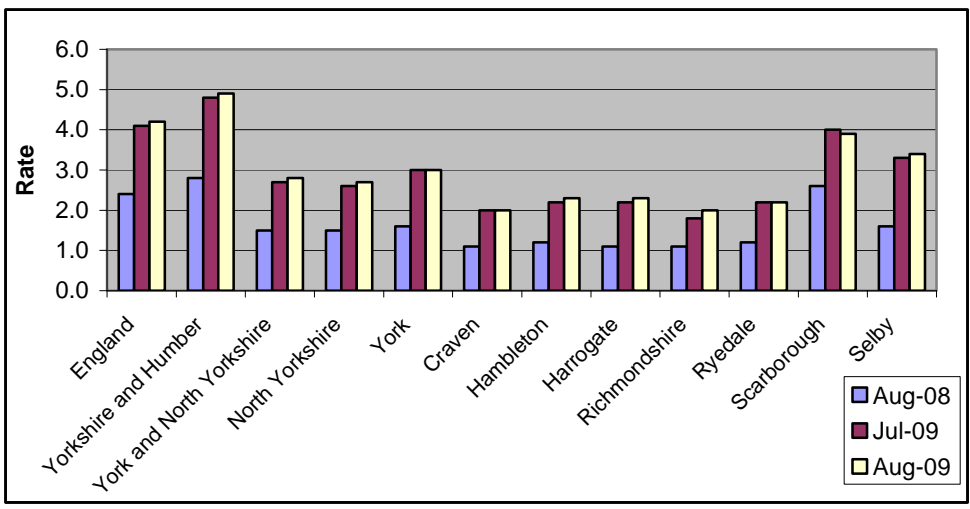
Source: Nomis



Claimant Count Rate

	Aug-08	Jul-09	Aug-09
England	2.4	4.1	4.2
Yorkshire and Humber	2.8	4.8	4.9
York and North Yorkshire	1.5	2.7	2.8
North Yorkshire	1.5	2.6	2.7
York	1.6	3.0	3.0
Craven	1.1	2.0	2.0
Hambleton	1.2	2.2	2.3
Harrogate	1.1	2.2	2.3
Richmondshire	1.1	1.8	2.0
Ryedale	1.2	2.2	2.2
Scarborough	2.6	4.0	3.9
Selby	1.6	3.3	3.4

Source: Nomis



Total Claiming for Over 12 months

	August 2009	Annual Change	Annual % Change	Monthly % Change
England	130885	46905	55.9	9.8
Yorkshire and Humber	15080	6845	83.1	10.6
York and North Yorkshire	1005	385	62.1	10.4
North Yorkshire	730.0	290	65.9	9.8
York	270	95	54.3	10.2
Craven	50	25	100.0	11.1
Hambleton	75	25	50.0	0.0
Harrogate	160	80	100.0	10.3
Richmondshire	35	20	133.3	-12.5
Ryedale	75	40	114.3	7.1
Scarborough	225	45	25.0	9.8
Selby	110	55	100.0	22.2

Source: Nomis

Total claiming for over 6 months

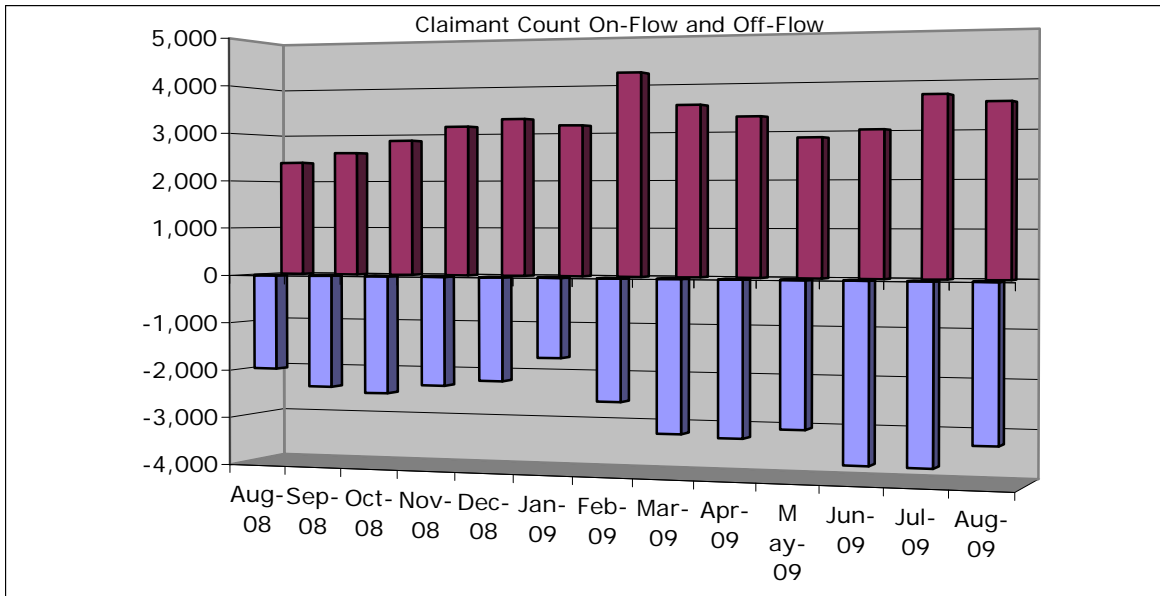
	August 2009	Annual Change	Annual % Change	Monthly % Change
England	427705	223490	109.4	10.5
Yorkshire and Humber	50665	28395	127.5	9.5
York and North Yorkshire	3780	2185	137.0	13.0
North Yorkshire	2770	1625	141.9	14.7
York	1010	560	124.4	8.0
Craven	170	115	209.1	13.3
Hambleton	345	200	137.9	16.9
Harrogate	560	350	166.7	13.1
Richmondshire	155	105	210.0	14.8
Ryedale	230	125	119.0	24.3
Scarborough	755	340	81.9	7.1
Selby	555	390	236.4	23.3

Source: Nomis

Claimant Count On-Flow and Off-Flow in York and North Yorkshire

	Off-flow	On-flow	Difference
August 2008	-1,971	2,395	424
September 2008	-2,327	2,598	271
October 2008	-2,438	2,852	414
November 2008	-2,253	3,143	890
December 2008	-2,132	3,292	1,160
January 2009	-1,636	3,146	1,510
February 2009	-2,499	4,220	1,721
March 2009	-3,115	3,535	420
April 2009	-3,167	3,288	121
May 2009	-2,956	2,850	-106
Jun-09	-3,630	3,003	-627
Jul-09	-3,641	3,687	46
Aug-09	-3,169	3,532	363

Source: Nomis



Claimant Count Off-Flow August 2009

	Off-Flow Aug 09	Annual % Change	Monthly % Change
England	275,584	52.7	-5.4
Yorkshire and Humber	31,070	47.3	-9.6
York and North Yorkshire	3,169	60.8	-13.0
North Yorkshire	2,223	58.0	-16.7
York	946	67.7	-2.8
Craven	163	75.3	-21.6
Hambleton	261	53.5	-18.7
Harrogate	517	72.9	-12.2
Richmondshire	154	58.8	-28.7
Ryedale	140	35.9	-20.5
Scarborough	627	46.2	-10.4
Selby	362	67.6	-21.1

Source: Nomis

Claimant Count On-Flow August 2009

	On-flow Aug 09	Annual % Change	Monthly % Change
England	297,800	35.3	-3.1
Yorkshire and Humber	34,032	30.7	-5.3
York and North Yorkshire	3,532	47.5	-4.2
North Yorkshire	2,471	43.2	-6.0
York	1,061	58.6	0.3
Craven	181	50.8	-11.3
Hambleton	309	49.3	-7.5
Harrogate	613	62.6	-4.4
Richmondshire	200	50.4	0.0
Ryedale	152	20.6	-7.3
Scarborough	602	30.6	-6.8
Selby	413	36.3	-6.1

Source: Nomis

Ratio of Claimant Count Off-flow to On-flow

	Aug-08	Jul-09	Aug-09	Annual Change	Monthly Change
England	1.2	1.05	1.08	-0.14	0.03
Yorkshire and Humber	1.2	1.05	1.10	-0.14	0.05
York and North Yorkshire	1.2	1.01	1.11	-0.10	0.10
North Yorkshire	1.2	0.99	1.11	-0.12	0.13
York	1.2	1.09	1.12	-0.06	0.03
Craven	1.3	0.98	1.11	-0.18	0.13
Hambleton	1.2	1.04	1.18	-0.03	0.14
Harrogate	1.3	1.09	1.19	-0.08	0.10
Richmondshire	1.4	0.93	1.30	-0.07	0.37
Ryedale	1.2	0.93	1.09	-0.14	0.15
Scarborough	1.1	0.92	0.96	-0.11	0.04
Selby	1.4	0.96	1.14	-0.26	0.18

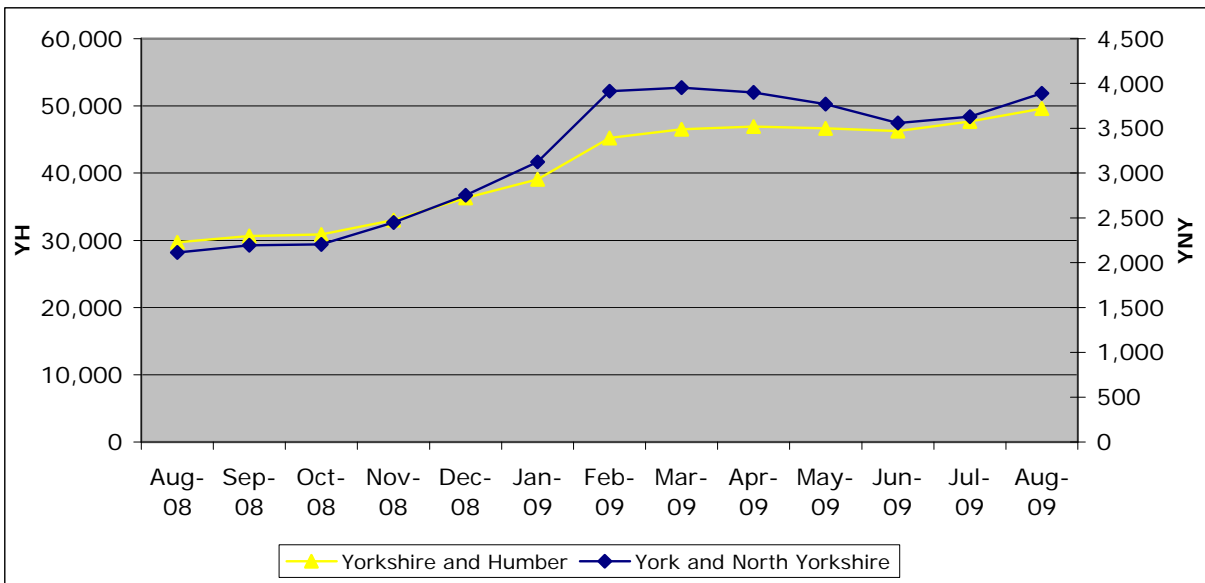
Source: Nomis

Claimant Count 18-24 year olds

	August 2009	Annual Change	Annual % Change	Monthly % Change
England	401690	162335	67.8	4.7
Yorkshire and Humber	49585	19890	67.0	4.0
York and North Yorkshire	3890	1775	83.9	7.2
North Yorkshire	2730	1215	80.2	8.5
York	1165	560	92.6	5.0
Craven	185	75	68.2	15.6
Hambleton	375	160	74.4	11.9
Harrogate	595	325	120.4	12.3
Richmondshire	205	70	51.9	20.6
Ryedale	200	100	100.0	5.3
Scarborough	675	255	60.7	2.3
Selby	500	240	92.3	7.5

Source: Nomis

Figure: 18 – 24 yr old claimants



Business Activity

Business Confidence

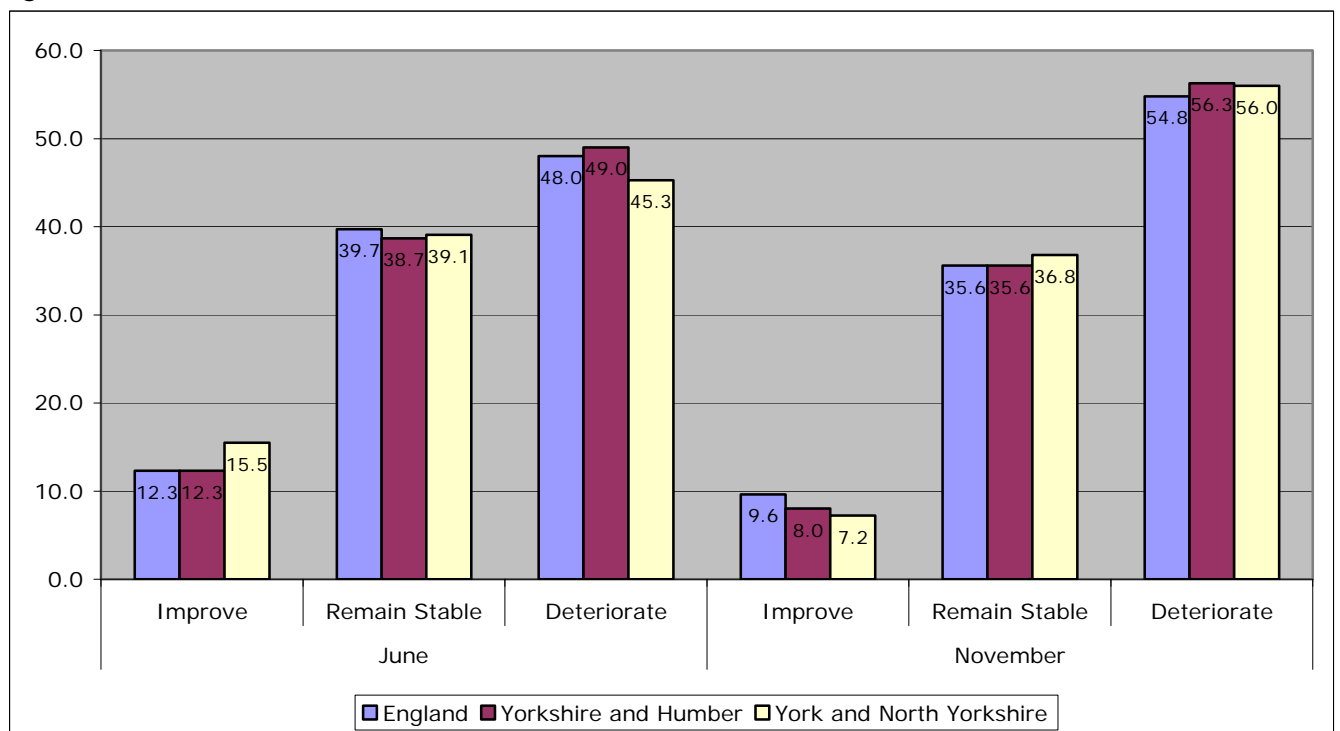
The National Business Survey is a large scale research project conducted by Ipsos Mori on behalf of the RDA Network and Invest Northern Ireland. It explores perceptions of businesses across England and Northern Ireland, on current and recent business conditions as well as looking forward to potential issues and views on projected change over the coming months. The survey asks a series of questions on business confidence, a number of which are presented here.

Over the next 12 months do you expect the business climate in which your business operates to generally improve, remain stable, or deteriorate?

	June			November		
	Improve	Remain Stable	Deteriorate	Improve	Remain Stable	Deteriorate
England	12.3	39.7	48.0	9.6	35.6	54.8
Yorkshire and Humber	12.3	38.7	49.0	8.0	35.6	56.3
York and North Yorkshire	15.5	39.1	45.3	7.2	36.8	56.0

Source: 'National Business Survey, November 2008, (Ipsos Mori on behalf of England's Regional Development Agencies and Invest Northern Ireland)'

Figure:



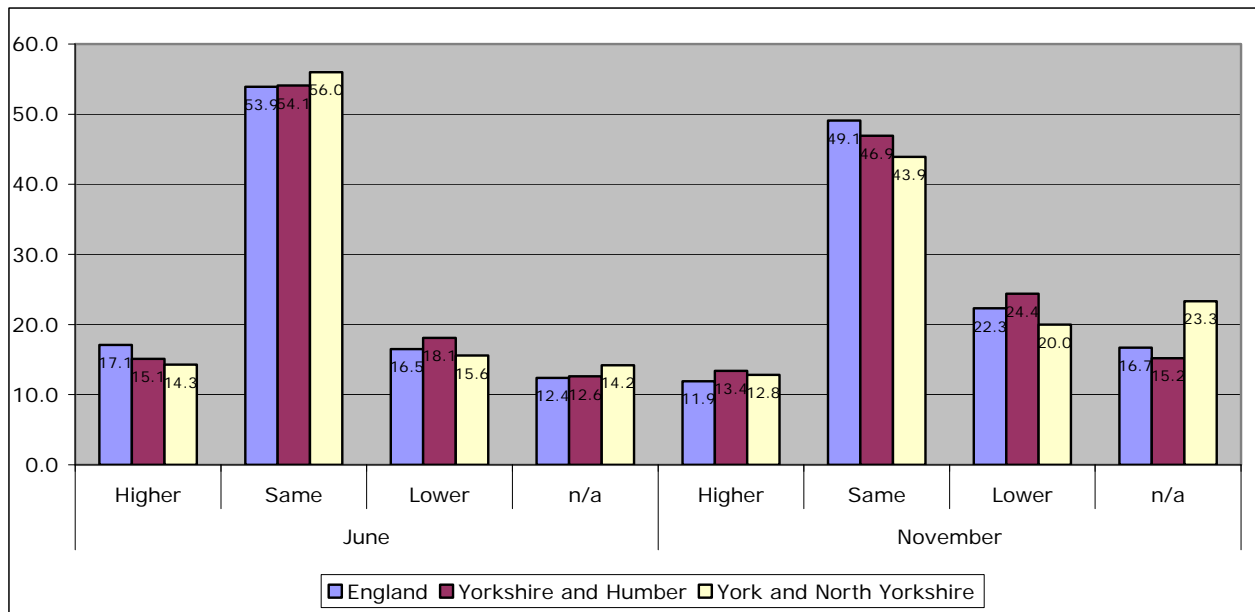
Source: 'National Business Survey, November 2008, (Ipsos Mori on behalf of England's Regional Development Agencies and Invest Northern Ireland)'

What has been the trend in the last 12 months with regard to numbers employed?

	June				November			
	Higher	Same	Lower	n/a	Higher	Same	Lower	n/a
England	17.1	53.9	16.5	12.4	11.9	49.1	22.3	16.7
Yorkshire and Humber	15.1	54.1	18.1	12.6	13.4	46.9	24.4	15.2
York and North Yorkshire	14.3	56.0	15.6	14.2	12.8	43.9	20.0	23.3

Source: 'National Business Survey, November 2008, (Ipsos Mori on behalf of England's Regional Development Agencies and Invest Northern Ireland)'

Figure:



N.B. The National Business Survey data is a sample and subject to some survey error. Sample sizes are smaller at more local levels therefore the confidence intervals are higher. The sample size was also smaller in November than it was in June.

Tourism

Number of Visits to Leisure Attractions in York and North Yorkshire

	No of Attractions Responding	Total Previous Year	Total	% Change
Jul-08	54	621521	600900	-3%
Aug-08	56	832091	843934	1%
Sep-08	56	530743	446212	-16%
Oct-08	50	422394	381563	-10%
Nov-08	40	197447	184794	-6%
Dec-08	36	194004	150948	-22%
Jan-09	58	153038	120111	-22%
Feb-09	44	-	-	-16%
Mar-09	63	-	-	-11%
Apr-09	54	-	-	47%
May-09	54	-	-	11.1%
Jun-09	56	-	-	3.7%
Jul-09	57	-	-	7.2%

Source: Visitor Attraction Monitor, Yorkshire tourist board

Housing

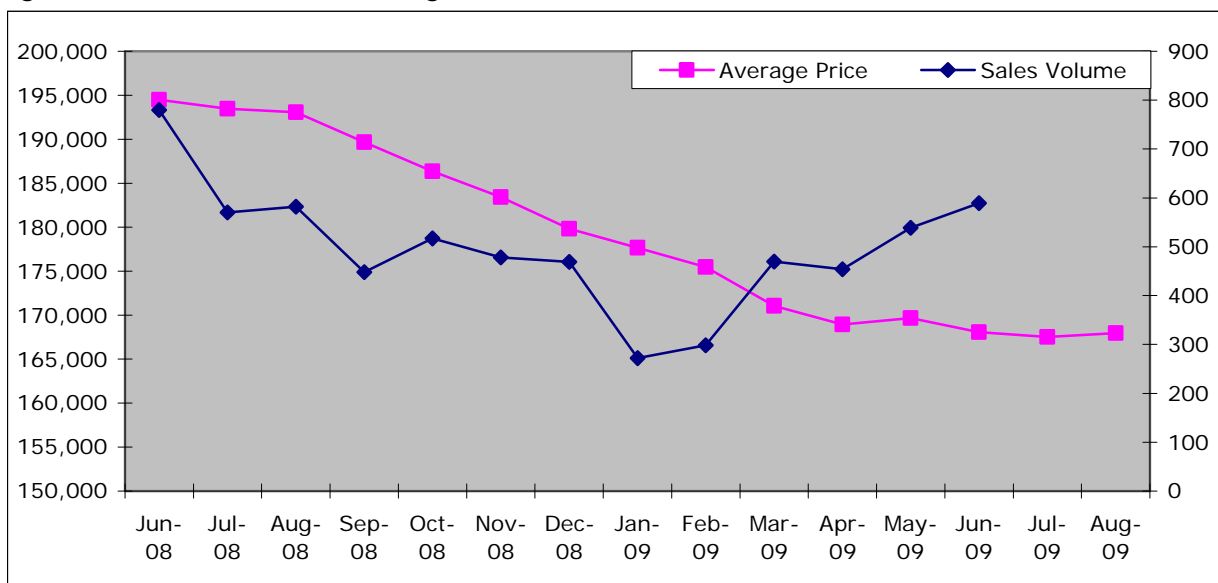
Land Registry House Price Index

North Yorkshire

	Index	Average Price	Monthly Change	Annual Change	Sales Volume
Jun-08	286.5	194,474	-0.8	-0.6	780
Jul-08	285.1	193,476	-0.5	-1.7	570
Aug-08	284.4	193,057	-0.2	-2.4	582
Sep-08	279.5	189,689	-1.7	-4.5	448
Oct-08	274.5	186,337	-1.8	-6.5	517
Nov-08	270.2	183,428	-1.6	-8.0	478
Dec-08	264.9	179,807	-2.0	-10.3	469
Jan-09	261.8	177,672	-1.2	-11.4	272
Feb-09	258.5	175,470	-1.2	-12.2	298
Mar-09	252.0	171,067	-2.5	-14.5	470
Apr-09	248.9	168,928	-1.3	-14.0	454
May-09	250.0	169,662	0.4	-13.5	539
Jun-09	247.6	168,059	-0.9	-13.6	589
Jul-09	246.8	167,515	-0.3	-13.4	-
Aug-09	247.5	167,956	0.3	-13.0	-

Source: Land Registry, House Price Index
 - Data not available

Figure: North Yorkshire – Average Price & Sales Volume



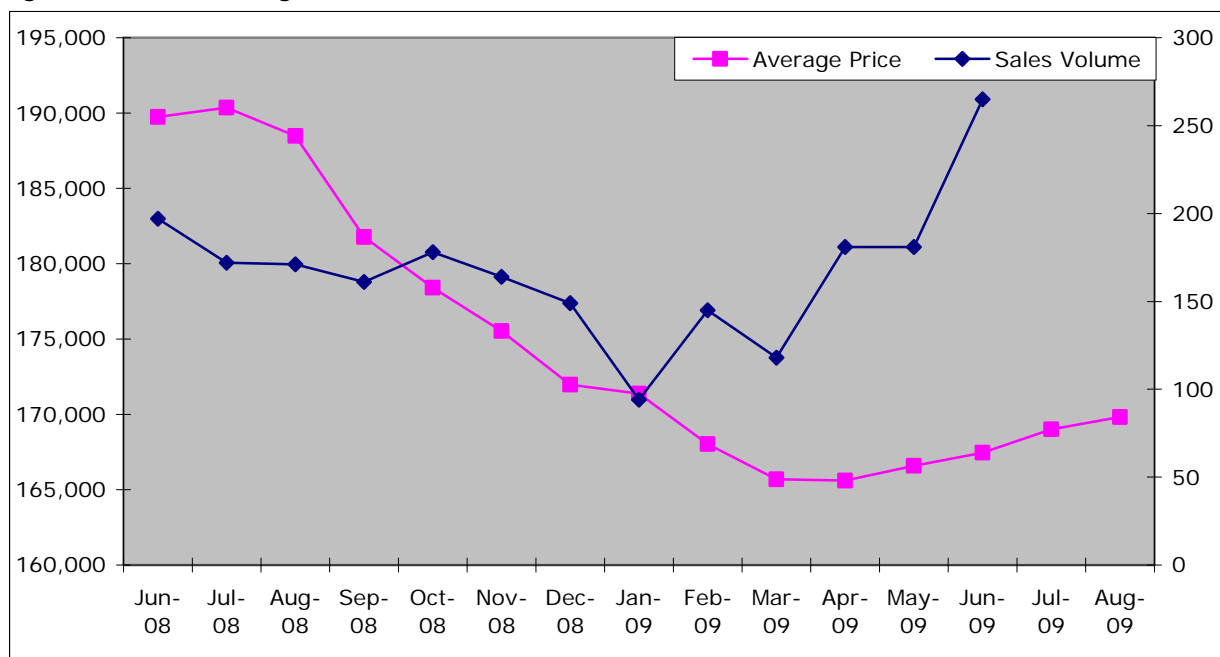
Source: Land Registry, House Price Index

York – Average Price & Sales Volume

	Index	Average Price	Monthly Change	Annual Change	Sales Volume
Jun-08	291.2	189,735	-1.2	-1.2	197
Jul-08	292.2	190,366	0.3	-1.2	172
Aug-08	289.3	188,472	-1.0	-2.7	171
Sep-08	279.0	181,776	-3.6	-6.7	161
Oct-08	273.8	178,397	-1.9	-8.5	178
Nov-08	269.4	175,539	-1.6	-9.3	164
Dec-08	264.0	171,963	-2.0	-11.2	149
Jan-09	263.0	171,369	-0.3	-11.2	94
Feb-09	257.9	168,021	-2.0	-13.3	145
Mar-09	254.3	165,688	-1.4	-13.9	118
Apr-09	254.2	165,609	0.0	-13.9	181
May-09	255.7	166,584	0.6	-13.3	181
Jun-09	257.0	167,450	0.5	-11.7	265
Jul-09	259.4	169,014	0.9	-11.2	-
Aug-09	260.7	169,825	0.5	-9.9	-

Source: Land Registry, House Price Index
 - Data not available

Figure: York – Average Price & Sales Volume



Source: Land Registry, House Price Index

Mean House Prices

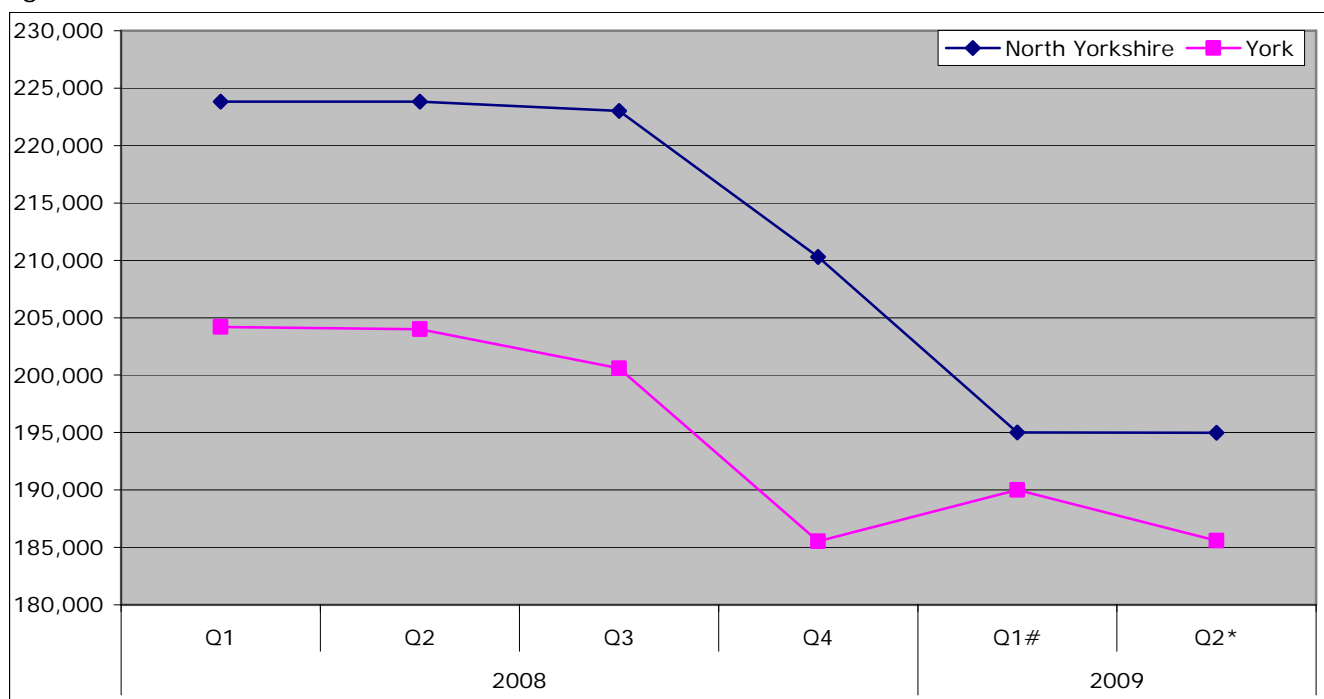
	2008				2009		% Change on previous year	% Change on previous Quarter
	Q1	Q2	Q3	Q4	Q1#	Q2*		
England	221,270	222,441	227,182	207,372	200,539	206,034	-7.4%	2.7%
Yorkshire & Humber	155,180	159,859	156,608	150,688	140,852	146,489	-8.4%	4.0%
York & North Yorkshire	220,471	220,073	219,456	207,143	191,931	190,597	-13.4%	-0.7%
North Yorkshire	223,812	223,835	223,002	210,287	195,019	194,982	-12.9%	0.0%
York	204,209	204,004	200,603	185,531	189,994	185,595	-9.0%	-2.3%
Craven	206,501	211,979	213,589	202,136	168,367	193,672	-8.6%	15.0%
Hambleton	231,621	248,417	240,533	254,409	197,409	213,195	-14.2%	8.0%
Harrogate	280,397	286,204	269,747	244,392	239,973	238,305	-16.7%	-0.7%
Richmondshire	210,311	230,944	223,971	190,838	208,510	196,254	-15.0%	-5.9%
Ryedale	266,365	225,208	239,240	233,013	210,153	180,015	-20.1%	-14.3%
Scarborough	179,150	169,107	167,178	172,640	150,757	147,100	-13.0%	-2.4%
Selby	185,217	184,721	200,788	174,182	170,288	170,643	-7.6%	0.2%

Source: DCLG

Data has been revised

* Data is provisional

Figure: Mean House Prices, North Yorkshire and York



Source: DCLG

Data has been revised

* Data is provisional

Property Sales

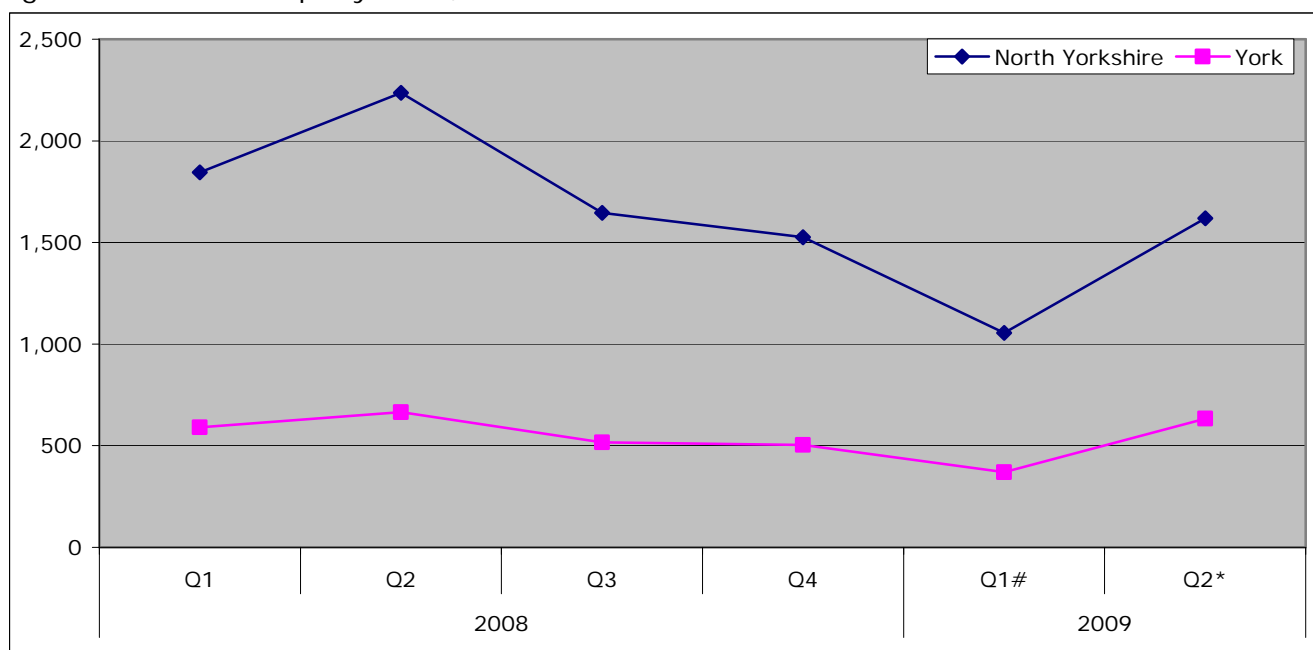
	2008				2009		% Change on previous year	% Change on previous Quarter
	Q1	Q2	Q3	Q4	Q1#	Q2*		
England	173,560	181,420	138,533	116,327	87,289	126,631	-30.2%	45.1%
Yorkshire & Humber	17,276	18,717	14,017	12,059	8,537	12,004	-35.9%	40.6%
York & North Yorkshire	2,436	2,902	2,162	2,030	1,424	2,253	-22.4%	58.2%
North Yorkshire	1,845	2,237	1,646	1,526	1,055	1,619	-27.6%	53.5%
York	591	665	516	504	369	634	-4.7%	71.8%
Craven	173	223	161	163	92	133	-40.4%	44.6%
Hambleton	222	292	244	202	145	231	-20.9%	59.3%
Harrogate	489	537	443	352	316	450	-16.2%	42.4%
Richmondshire	133	188	94	94	61	110	-41.5%	80.3%
Ryedale	124	178	127	146	67	121	-32.0%	80.6%
Scarborough	448	485	381	347	240	335	-30.9%	39.6%
Selby	256	334	196	222	134	239	-28.4%	78.4%

Source: DCLG

Data has been revised

* Data is provisional

Figure: Number of Property Sales, North Yorkshire and York



Source: DCLG

Data has been revised

* Data is provisional

Mortgage and Landlord Possession Claims/Orders

The following data indicates the number of claims/orders that have been issued at County Court level for possession of properties either under mortgage or landlord possession.

N.B. Important note - Introduction of Mortgage Pre-Action Protocol (MPAP) on 19 November 2008.

A new mortgage pre action protocol (MPAP), was introduced for possession claims in the County Courts with effect from 19 November 2008.

Evidence from administrative records from October to December 2008 suggests that this date coincided with a fall of around 50% in the daily and weekly numbers of new mortgage repossession claims being issued in the courts. It therefore seems highly likely that the launch of the MPAP has led to a marked fall in the number of new claims being issued during the latter part of the period covered by this bulletin. However, given the apparent cause, users should exercise caution in drawing broader inferences from the fall in mortgage possession claims issued in Q4 2008.

Mortgage possession orders are typically made around 8 weeks after the corresponding claims are issued. For this reason, the impact of the MPAP is expected to occur during the early months of 2009. At this early stage is not clear to what extent the launch of the MPAP has led to a permanent fall in the numbers of new mortgage possession claims being issued, as opposed to some merely being postponed. This will become clearer as statistics for 2009 are published.

Mortgage Possession Claims Issued

	Q1 2008	Q2 2008	Q3 2008	Q4 2008	Q1 2009	Q2 2009	% change since Q2 2008	% change since Q1 2009
Yorkshire & Humber	4,038	3,928	3,962	2,669	2,476	2,760	-30%	11%
York & North Yorkshire	360	337	358	258	237	245	-27%	3%
Harrogate	59	56	44	45	40	45	-20%	13%
Scarborough	120	97	138	93	78	80	-18%	3%
Skipton	33	41	29	20	24	25	-39%	4%
York	148	143	147	100	95	95	-34%	0%

Source: Ministry of Justice

Mortgage Possession Orders Issued

	Q1 2008	Q2 2008	Q3 2008	Q4 2008	Q1 2009	Q2 2009	% change since Q2 2008	% change since Q1 2009
Yorkshire & Humber	-	-	-	-	1,821	1,920	-	5%
York & North Yorkshire	-	-	-	-	152	160	-	5%
Harrogate	-	-	-	-	30	25	-	-17%
Scarborough	90	80	116	113	57	45	-44%	-21%
Skipton	29	32	31	27	15	20	-38%	33%
York	100	106	93	123	50	70	-34%	40%

Source: Ministry of Justice

Landlord Possession Claims issued

	Q1 2008	Q2 2008	Q3 2008	Q4 2008	Q1 2009	Q2 2009	% change since Q2 2008	% change since Q1 2009
Yorkshire & Humber	2,671	2,656	2,434	2,438	2,370	2,340	-12%	-1.3%
York & North Yorkshire	280	252	288	266	232	240	-5%	3.4%
Harrogate	46	48	56	40	33	40	-17%	21.2%
Scarborough	82	64	81	85	60	75	17%	25.0%
Skipton	15	8	16	18	12	10	25%	-16.7%
York	137	132	135	123	127	115	-13%	-9.4%

Source: Ministry of Justice

Landlord Possession Orders issued

	Q1 2008	Q2 2008	Q3 2008	Q4 2008	Q1 2009	Q2 2009	% change since Q2 2008	% change since Q1 2009
Yorkshire & Humber	-	-	-	-	2,403	1,660	-	-31%
York & North Yorkshire	-	-	-	-	233	-	-	-
Harrogate	-	-	-	-	44	20	-	-55%
Scarborough	76	52	69	75	70	30	-42%	-57%
Skipton	16	5	13	12	12	*	-	-
York	110	75	106	116	107	95	27%	-11%

Source: Ministry of Justice

* The figure is not provided as the number of claims leading to an order made is either 7 or less, or if it is a % change where there are fewer than 30 observations in the base period

Town Centre Activity

Footfall

	TBC
Craven	
Hambleton	
Harrogate	
Richmondshire	
Ryedale	
Scarborough	
Selby	
York	

Source: Local Authorities

Number of Vacant Retail Premises

	Mar-08		Mar-09	
	no.	%	no.	%
Craven				
Hambleton				
Harrogate				
Richmondshire				
Ryedale				
Scarborough				
Selby				
York				

Source: Local Authorities

Car Parking

Total Revenue/Visits – TBC

	Q1 2008	Q2 2008	Q3 2008	Q4 2008	Q1 2009
Craven					
Hambleton					
Harrogate					
Richmondshire					
Ryedale					
Scarborough					
Selby					
York					

Source: Local Authorities

Planning

Total Planning Decisions

	Q1 2008	Q2 2008	Q3 2008	Q4 2008	Q1 2009	Q2 2009	Annual Change		Quarterly Change	
England	131,704	144,700	-	115,489	93,100	105,000	-39,700	-27.4%	11,900	12.8%
Yorkshire and Humber	11,534	12,100	-	9,937	7,800	8,900	-3,200	-26.4%	1,100	14.1%
York and North Yorkshire	2,806	3,125	-	2,513	2,111	2,197	-928	-29.7%	86	4.1%
North Yorkshire	2,352	2,613	2,459	2,058	1,737	1,818	-795	-30.4%	81	4.7%
York	454	512	#	455	374	379	-133	-26.0%	5	1.3%
Craven	170	193	200	117	121	#	#	#	#	#
Hambleton	323	399	360	300	278	337	-62	-15.5%	59	21.2%
Harrogate	642	672	561	613	461	427	-245	-36.5%	-34	-7.4%
Richmondshire	154	183	199	141	138	173	-10	-5.5%	35	25.4%
Ryedale	188	228	258	180	155	187	-41	-18.0%	32	20.6%
Scarborough	276	265	240	186	165	188	-77	-29.1%	23	13.9%
Selby	260	296	276	213	168	211	-85	-28.7%	43	25.6%
North York Moors	195	197	216	166	143	160	-37	-18.8%	17	11.9%
Yorkshire Dales	144	180	149	142	108	135	-45	-25.0%	27	25.0%

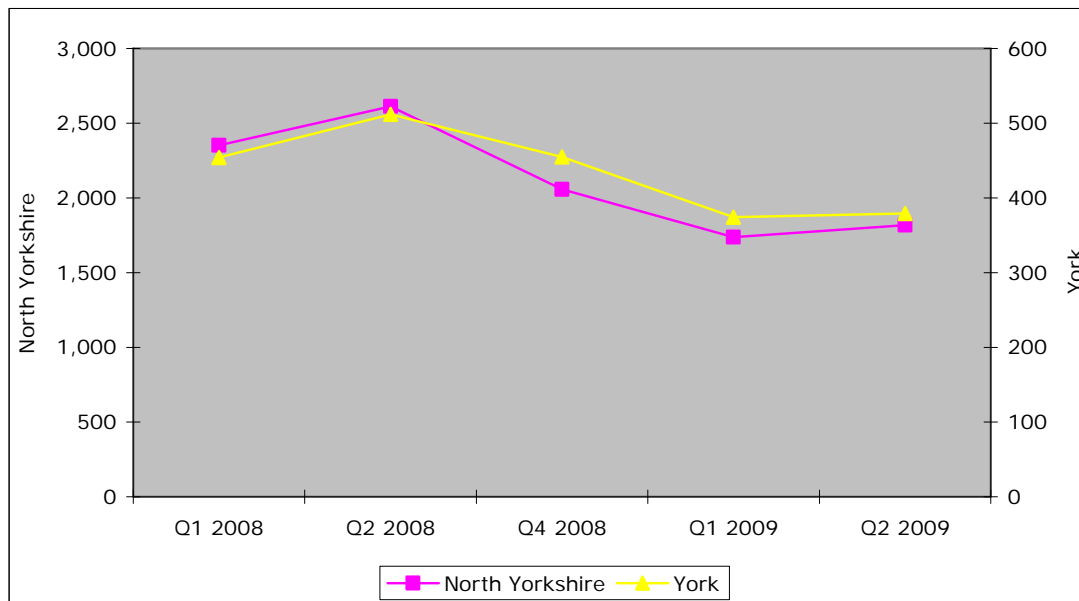
Source: Statistics of Planning Decisions, CLG

Data not submitted

- Data cannot be calculated

The figures for York and North Yorkshire and North Yorkshire for Q2 2009 does not include data for Craven

Figure: Total Planning Decisions, North Yorkshire/York



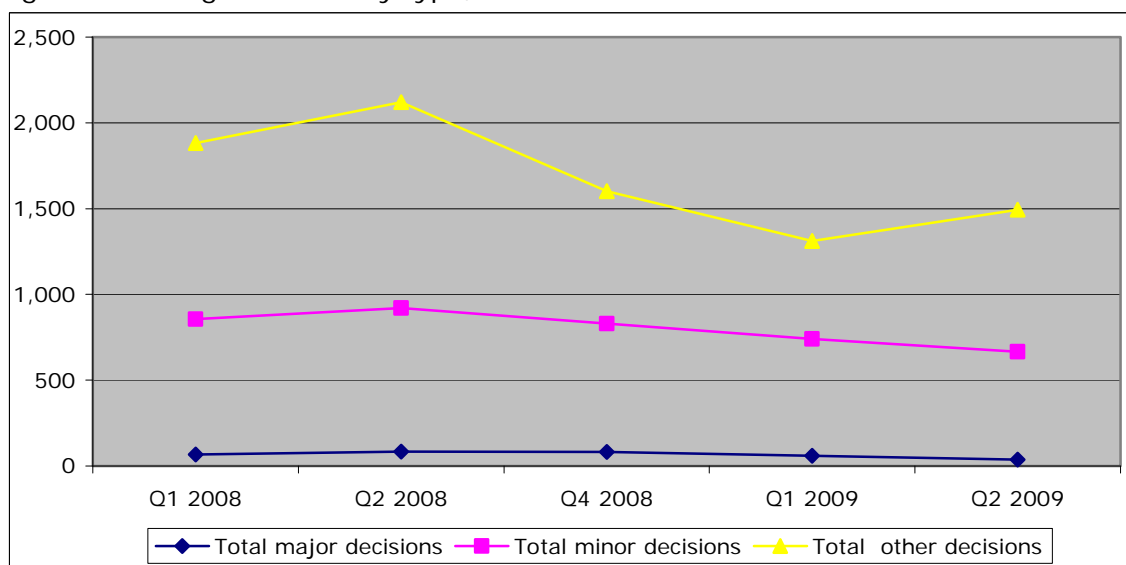
Source: Statistics of Planning Decisions, CLG
 N.B. The number of decisions made in Q3 2008 is not available and therefore excluded from the chart. The figure for North Yorkshire for Q2 2009 does not include data for Craven

Breakdown of planning decisions by type in York and North Yorkshire

	Q1 2008	Q2 2008	Q3 2008	Q4 2008	Q1 2009	Q2 2009
Total major decisions	67	83	-	81	60	37
Total minor decisions	856	921	-	830	740	666
Total other decisions	1,883	2,121	-	1,602	1,311	1,494
Total	2,806	3,125	-	2,513	2,111	2,197

Source: Statistics of Planning Decisions, CLG
 N.B Figures shown for Q2 2009 does not include data for Craven

Figure: Planning Decisions by type, York and North Yorkshire



Source: Statistics of Planning Decisions, CLG
 N.B. The total number of decisions made in Q3 2008 is unknown and therefore excluded from the chart. N.B Figures shown for Q2 2009 does not include data for Craven

Breakdown of planning decisions by type, North Yorkshire

	Q1 2008	Q2 2008	Q3 2008	Q4 2008	Q1 2009	Q2 2009
Total major decisions	58	66	54	69	50	33
Total minor decisions	750	799	807	700	630	575
Total other decisions	1,544	1,748	1,598	1,289	1,057	1,210
Total	2,352	2,613	2,459	2,058	1,737	1,818

Source: Statistics of Planning Decisions, CLG

N.B Figures shown for Q2 2009 does not include data for Craven

Breakdown of planning decisions by type, York

	Q1 2008	Q2 2008	Q3 2008	Q4 2008	Q1 2009	Q2 2009
Total major decisions	9	17	#	12	10	4
Total minor decisions	106	122	#	130	110	91
Total other decisions	339	373	#	313	254	284
Total	454	512	#	455	374	379

Source: Statistics of Planning Decisions, CLG

Data not submitted

Benefits

Number of claims made for Council Tax and Housing Benefit

	Q1 2008	Q2 2008	Q3 2008	Q4 2008	Q1 2009
Craven					
Hambleton					
Harrogate					
Richmondshire					
Ryedale					
Scarborough					
Selby					
York					

Source: Ministry of Justice

Community and Voluntary Sector

Demand for CAB services

2009/10 Q1 CAB services	Craven	Hambleton	Richmondshire	Ripon	Ryedale	Scarborough	Selby
Benefits	566	828	847	575	951	898	1288
Debt	619	1142	737	179	781	1240	1985
Employment	202	308	230	147	193	325	642
Health & Community	31	28	32	21	13	28	43
Relationships & family	59	119	112	88	93	125	200
Total	1477	2425	1958	1010	2031	2616	4158

N.B it is hoped CAB figures for York and Harrogate will be included next quarter