

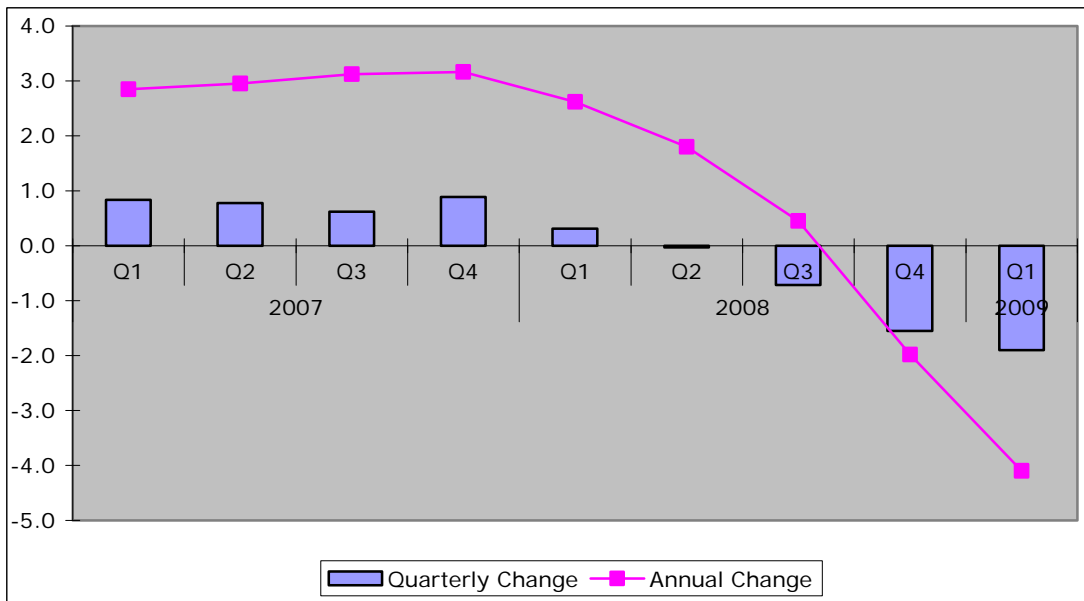
National Picture

Key Indicators	March 2009	April 2009	Change
Inflation figures - CPI	2.9	2.3	-0.6
Inflation figures - RPI	-0.4	-1.2	-0.8
New Businesses - VAT Registrations	16,112	12,955	-3,157
			-19.6%
VAT De-registrations	20,478	15,198	-5,280
			-25.8%

Source: ONS, UK Trade Info

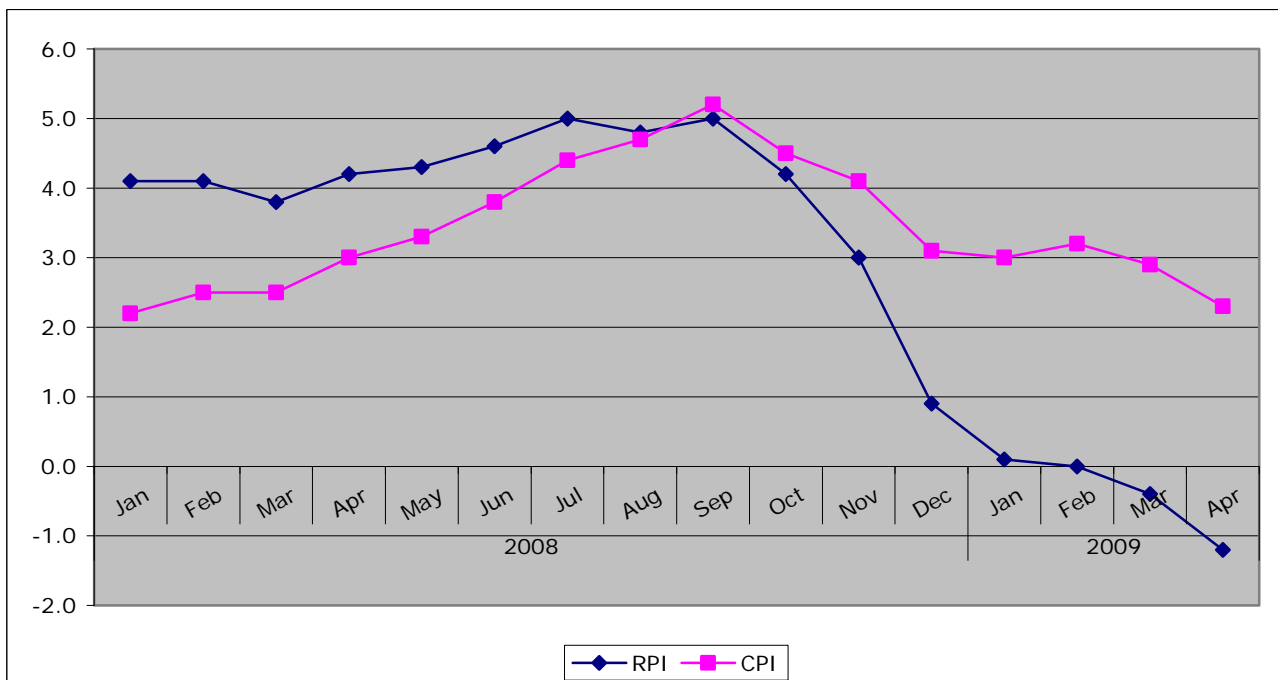
◆ In quarter 1 of 2009 GDP contracted by a further 1.9%.

Figure: Change to GDP



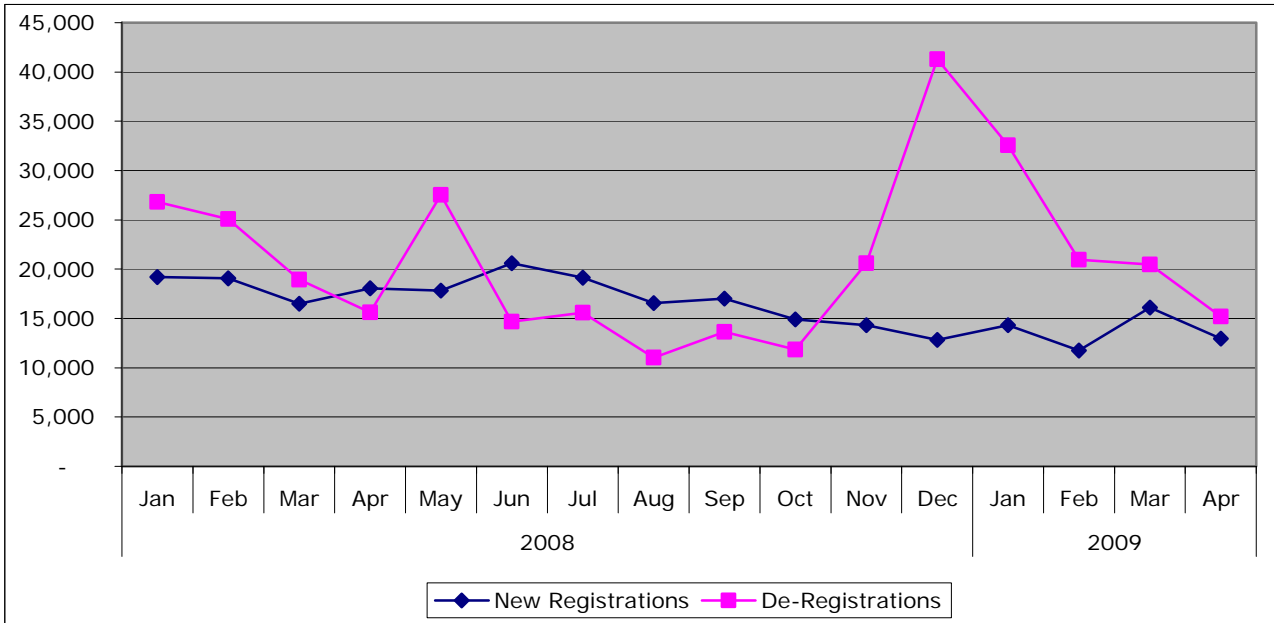
Source: ONS

Figure: Inflation Trends



Source: ONS

Figure 1: New Business Registrations and De-Registrations



Source: UK Trade Info

Local Picture

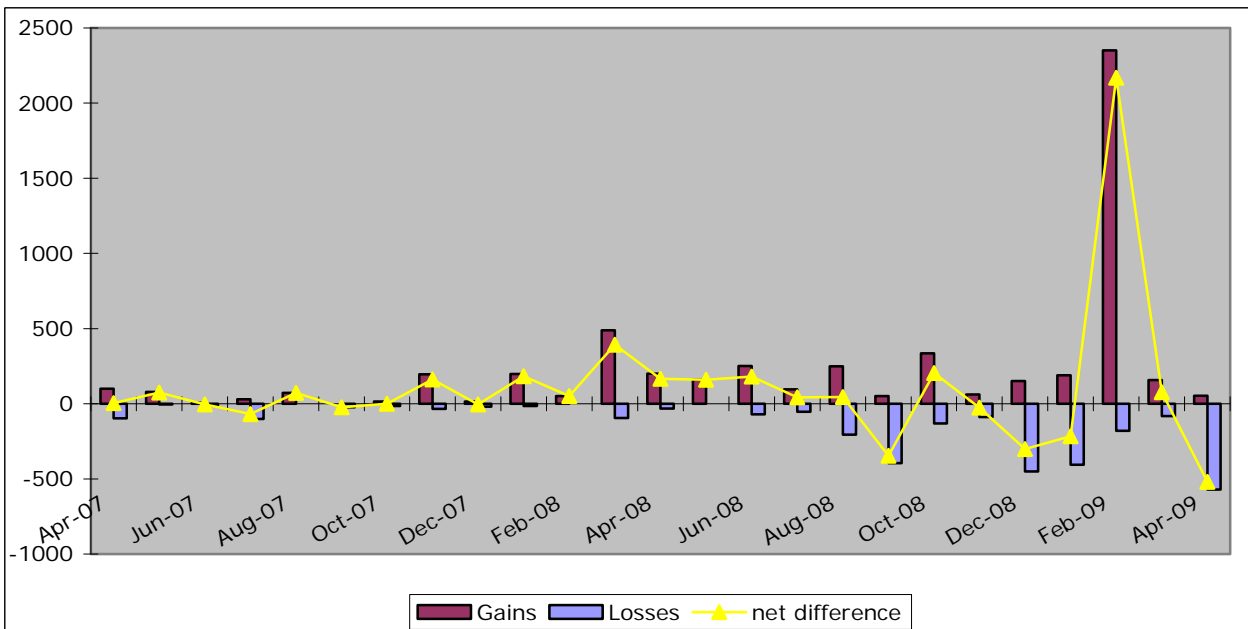
Employment

Confirmed Job losses - April 2009			
Company	Location	No. jobs	Type of Service
Aviva	York	-571	Financial Services
Jarvis	York	-	Supporting and auxiliary transport activities

Confirmed Job Gains - April 2009			
Company	Location	No. jobs	Type of Service
CJs Café Bar	Selby	5	Hotels and Restaurants
Travelodge	Scarborough	20	Hotels and Restaurants
Tesco Express	Knareborough	14	Retail
SHC Hire Centre	Northallerton	3	Supporting and Auxiliary Transport Activities
Bayford Oil	Skipton	10	Supporting and auxiliary transport activities

Source: Yorkshire Futures Monthly jobs database

Figure: Jobs/Gains and net difference

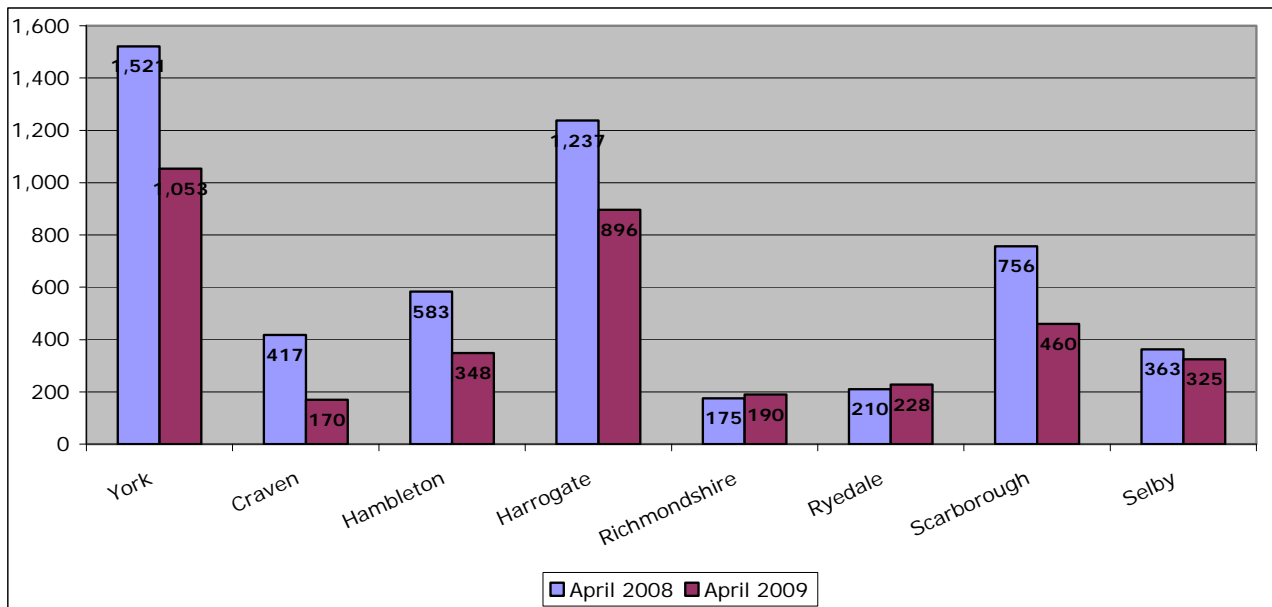


Job Centre Plus – notified job vacancies

	April 2009	Annual Change		Monthly Change	
		Actual	%	Actual	%
England	203,132	-91,374	-31%	1,029	1%
Yorkshire and Humber	20,019	-13,107	-40%	-1,883	-9%
York and North Yorkshire	3,670	-1,592	-30%	-418	-10%
North Yorkshire	2,617	-1,124	-30%	40	2%
York	1,053	-468	-31%	-458	-30%
Craven	170	-247	-59%	-40	-19%
Hambleton	348	-235	-40%	99	40%
Harrogate	896	-341	-28%	40	5%
Richmondshire	190	15	9%	26	16%
Ryedale	228	18	9%	7	3%
Scarborough	460	-296	-39%	13	3%
Selby	325	-38	-10%	-105	-24%

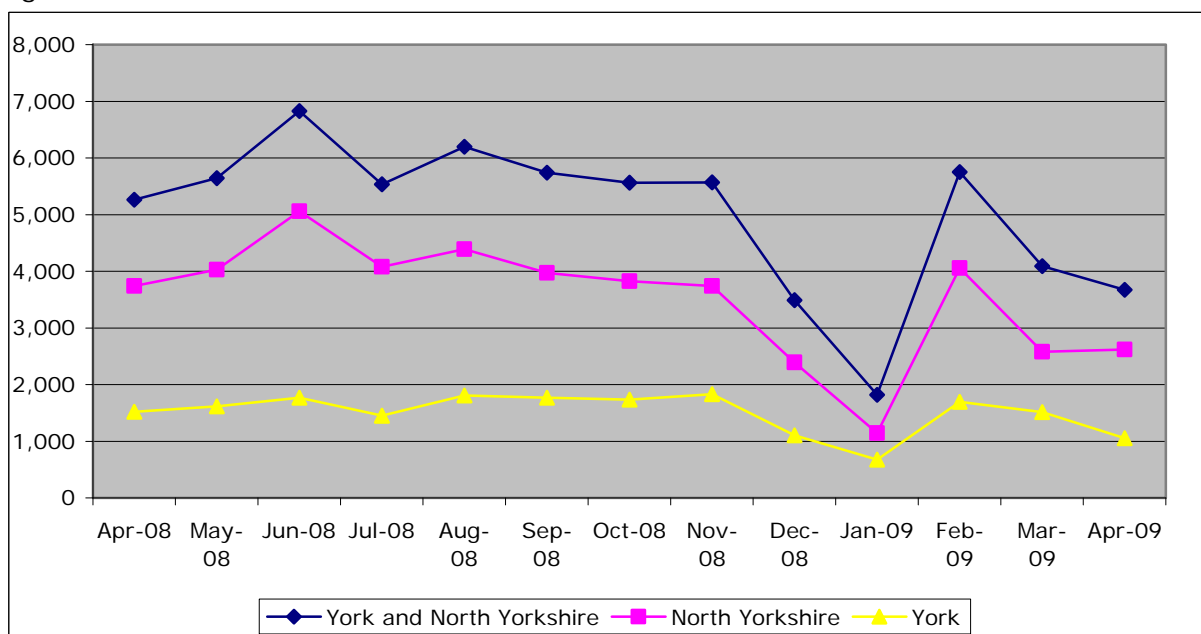
Source: Nomis

Figure: Number of Vacancies, Year on Year comparison



Source: Nomis

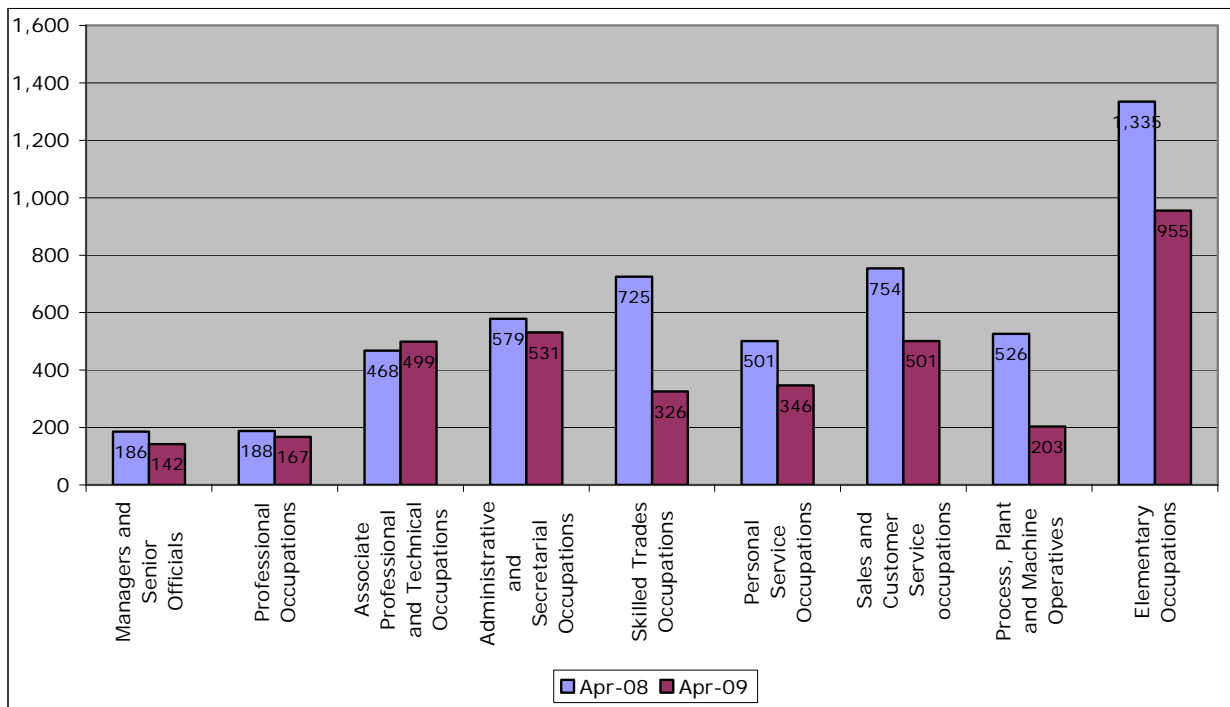
Figure: Number of vacancies trend



Source: Nomis

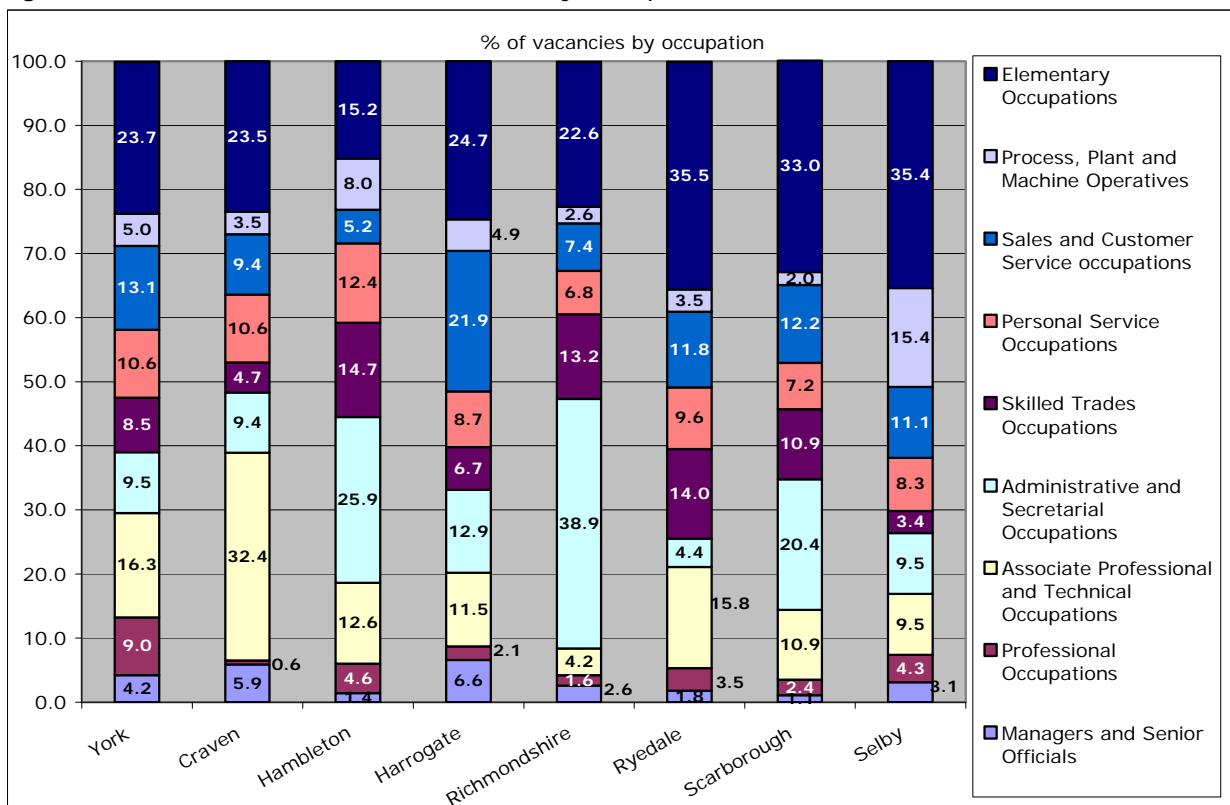
Vacancies by Occupation

Figure: No. vacancies by occupation, York and North Yorkshire, year on year comparison



Source: Nomis

Figure: Share of total notified vacancies by occupation, March 2009



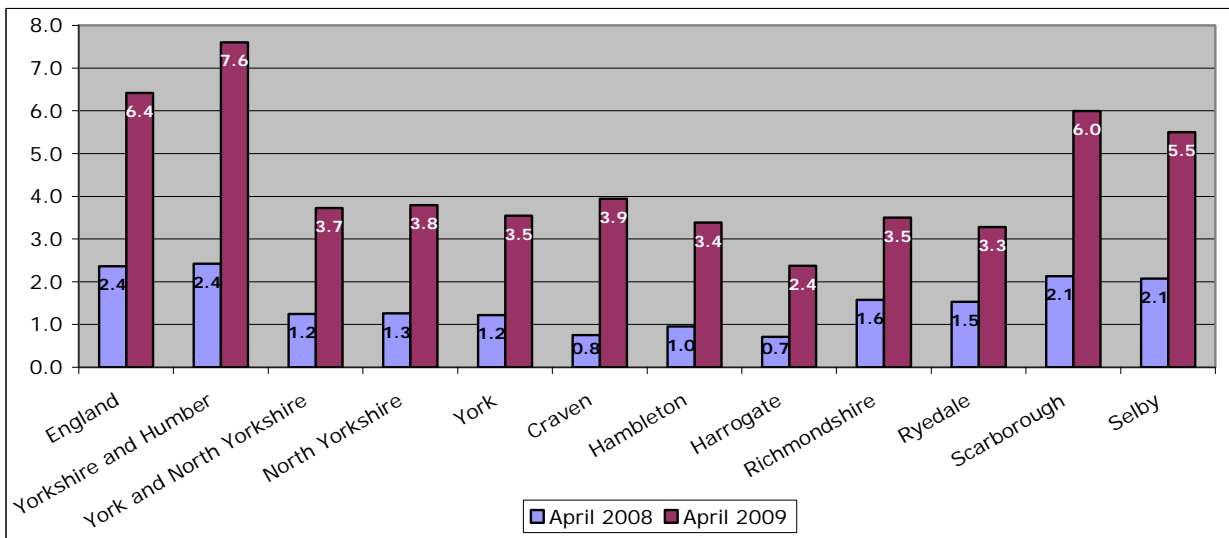
Source: Nomis

Number of Claimants to Notified Vacancies ratio

	April 2008	March 2009	Apr-09	Annual Change	Monthly Change
England	2.4	6.3	6.4	4.1	0.1
Yorkshire and Humber	2.4	6.8	7.6	5.2	0.8
York and North Yorkshire	1.2	3.3	3.7	2.5	0.4
North Yorkshire	1.3	3.9	3.8	2.5	-0.1
York	1.2	2.4	3.5	2.3	1.2
Craven	0.8	3.2	3.9	3.2	0.7
Hambleton	1.0	4.9	3.4	2.4	-1.5
Harrogate	0.7	2.4	2.4	1.7	0.0
Richmondshire	1.6	4.1	3.5	1.9	-0.6
Ryedale	1.5	3.4	3.3	1.8	-0.2
Scarborough	2.1	6.6	6.0	3.9	-0.6
Selby	2.1	4.0	5.5	3.4	1.5

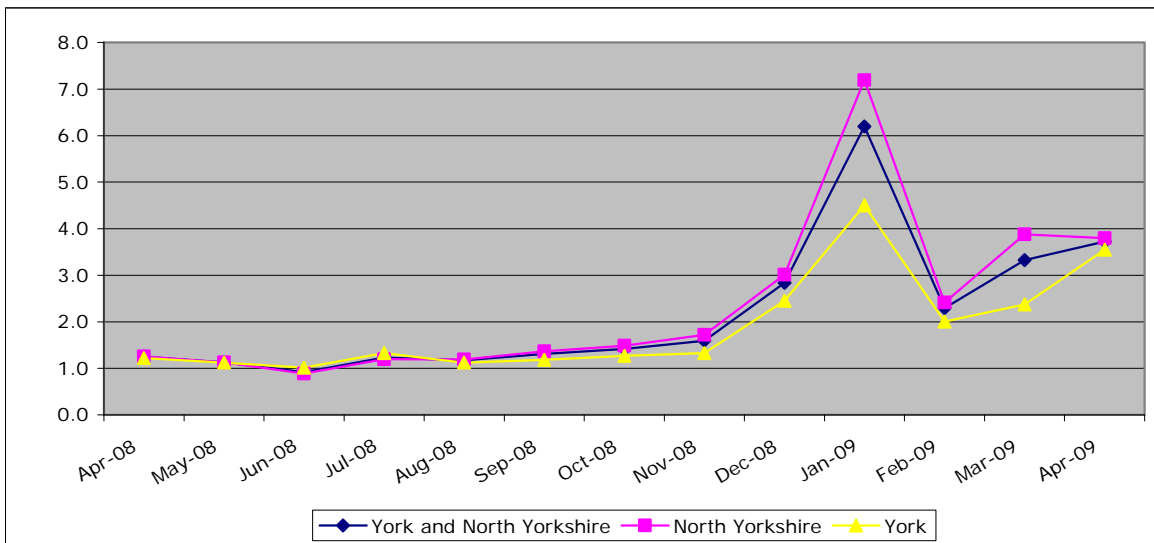
Source: Nomis

Figure: Number of Claimants to Notified Vacancies, Year on Year comparison



Source: Nomis

Figure: Number of Claimants to Notified Vacancies ratio trend



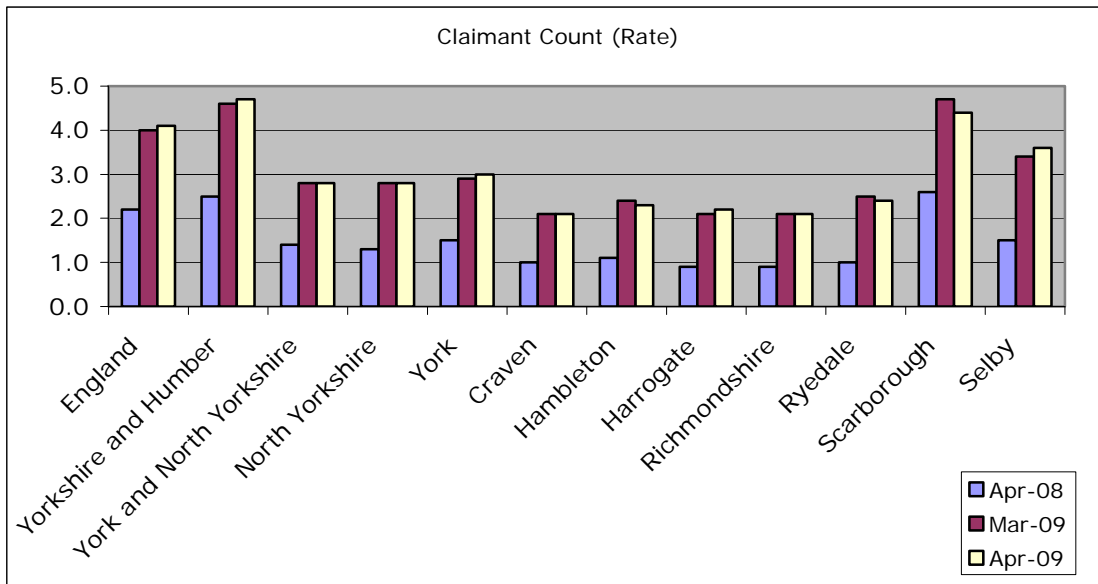
Source: Nomis

Unemployment

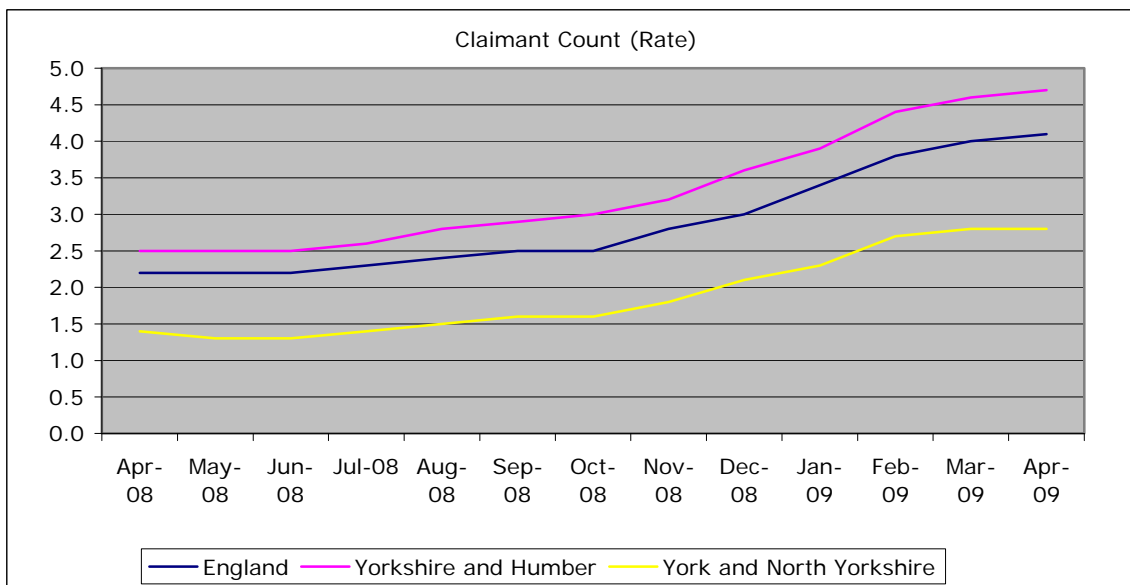
Total Claimant Count

	April 2009	Annual Change	Annual % Change	Monthly % Change
England	1304456	609196	87.6	2.5
Yorkshire and Humber	152149	71935	89.7	2.5
York and North Yorkshire	13668	7109	108.4	0.6
North Yorkshire	9933	5231	111.3	-0.7
York	3735	1878	101.1	4.1
Craven	670	356	113.4	-0.3
Hambleton	1178	623	112.3	-2.7
Harrogate	2128	1253	143.2	4.8
Richmondshire	665	390	141.8	-0.4
Ryedale	748	427	133.0	-1.6
Scarborough	2757	1147	71.2	-6.0
Selby	1787	1035	137.6	3.7

Source: Nomis



Source: Nomis



Source: Nomis

Total Claiming for Over 6 Months

	April 2009	Annual Change	Annual % Change	Monthly % Change
England	312,265	107,900	52.8	9.7
Yorkshire and Humber	37,255	15,555	71.7	10.1
York and North Yorkshire	2,670	1,020	61.8	13.9
North Yorkshire	1,940	750	63.0	14.1
York	735	275	59.8	14.0
Craven	115	55	91.7	9.5
Hambleton	215	70	48.3	13.2
Harrogate	380	160	72.7	11.8
Richmondshire	120	65	118.2	20.0
Ryedale	155	70	82.4	14.8
Scarborough	640	185	40.7	12.3
Selby	310	140	82.4	21.6

Source: Nomis

Total Claiming for over 12 months

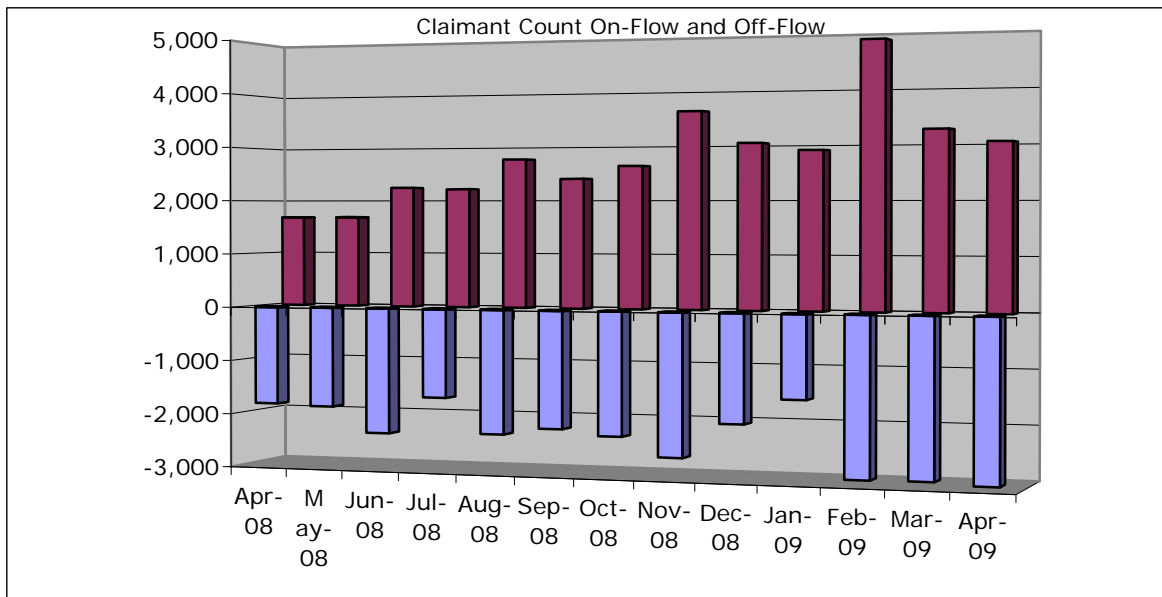
	April 2009	Annual Change	Annual % Change	Monthly % Change
England	100,425	11,155	12.5	3.3
Yorkshire and Humber	10,915	2,250	26.0	4.5
York and North Yorkshire	725	45	6.6	5.8
North Yorkshire	520	5	1.0	6.1
York	205	40	24.2	5.1
Craven	30	5	20.0	20.0
Hambleton	65	5	8.3	8.3
Harrogate	105	5	5.0	16.7
Richmondshire	25	10	66.7	0.0
Ryedale	55	25	83.3	10.0
Scarborough	170	-40	-19.0	0.0
Selby	75	5	7.1	15.4

Source: Nomis

Claimant Count On-Flow and Off-Flow in York and North Yorkshire

	Off-flow	On-flow	Difference
April 2008	-1,814	1,678	-136
May 2008	-1,843	1,686	-157
June 2008	-2,314	2,244	-70
July 2008	-1,631	2,214	583
August 2008	-2,274	2,764	490
September 2008	-2,148	2,398	250
October 2008	-2,250	2,633	383
November 2008	-2,600	3,626	1,026
December 2008	-1,968	3,039	1,071
January 2009	-1,510	2,904	1,394
February 2009	-2,884	4,869	1,985
March 2009	-2,875	3,263	388
April 2009	-2,923	3,035	112

Source: Nomis



Source: Nomis

Claimant Count: Off-flow, April 09

	Off-Flow April 09	Annual % Change	Monthly % Change
England	235,031	48.1	0.6
Yorkshire and Humber	26,315	43.2	-1.3
York and North Yorkshire	2,923	61.1	1.7
North Yorkshire	2,167	66.9	1.9
York	756	46.5	1.1
Craven	143	72.3	-12.3
Hambleton	249	62.7	12.2
Harrogate	392	65.4	-17.5
Richmondshire	174	81.3	31.8
Ryedale	186	116.3	27.4
Scarborough	715	56.1	0.7
Selby	308	66.5	10.4

Source: Nomis

Claimant Count On-flow April 09

	On-flow April 09	Annual % Change	Monthly % Change
England	269,073	73.5	-7.5
Yorkshire and Humber	30,501	67.1	-4.8
York and North Yorkshire	3,035	80.9	-7.0
North Yorkshire	2,136	79.9	-8.5
York	899	83.1	-3.1
Craven	143	55.4	-17.8
Hambleton	224	42.7	-17.3
Harrogate	498	144.1	-11.7
Richmondshire	161	96.3	-1.2
Ryedale	172	135.6	-0.6
Scarborough	559	42.2	-7.3
Selby	379	103.8	-2.1

Source: Nomis

Ratio of Claimant Count Off-flow to On-flow

	Apr-08	Mar-09	Apr-09	Annual Change	Monthly Change
England	0.98	1.25	1.1	0.27	-0.36
Yorkshire and Humber	0.99	1.20	1.2	0.23	-0.39
York and North Yorkshire	0.93	1.13	1.0	0.27	-0.55
North Yorkshire	0.91	1.10	1.0	0.29	-0.68
York	0.95	1.24	1.2	0.19	-0.24
Craven	1.11	1.07	1.0	0.15	-0.82
Hambleton	1.03	1.22	0.9	0.36	-0.69
Harrogate	0.86	1.19	1.3	0.27	-0.61
Richmondshire	0.85	1.23	0.9	0.30	-0.32
Ryedale	0.85	1.18	0.9	0.58	-0.78
Scarborough	0.86	0.85	0.8	0.20	-0.90
Selby	1.01	1.39	1.2	0.33	-0.28

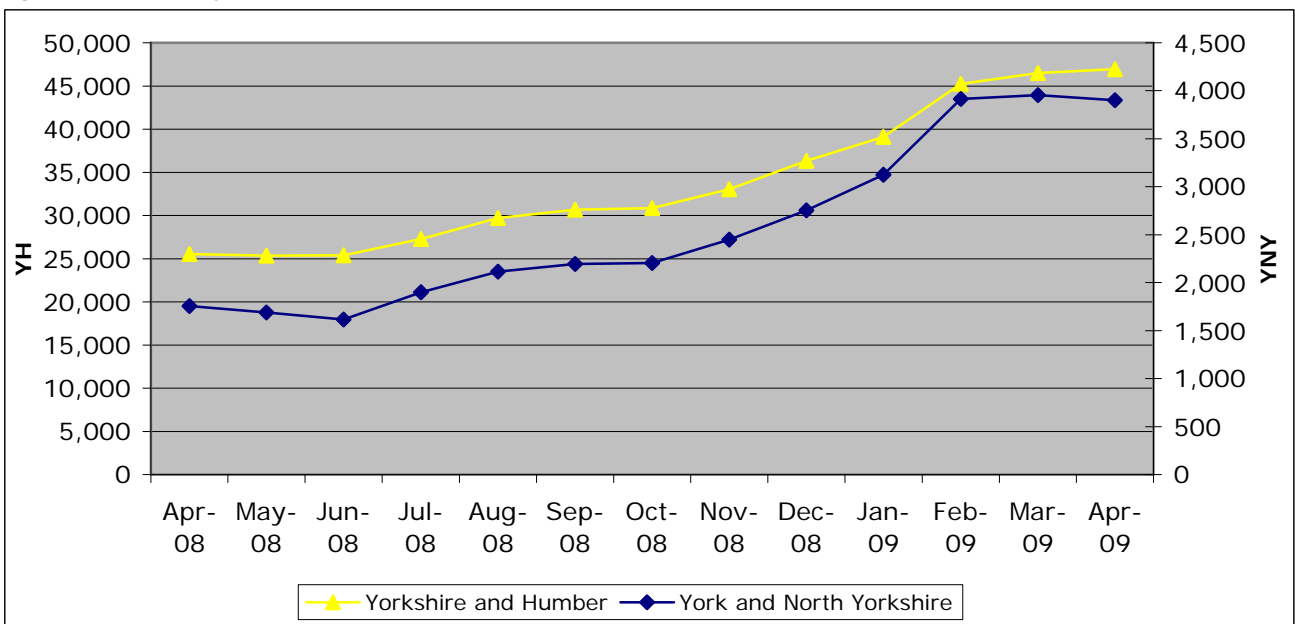
Source: Nomis

Claimant Count 18-24 year olds

	April 2009	Annual Change	Annual % Change	Monthly % Change
England	380590	172070	82.5	0.3
Yorkshire and Humber	46940	21390	83.7	0.9
York and North Yorkshire	3900	2145	122.2	-1.4
North Yorkshire	2805	1540	121.7	-2.9
York	1100	610	124.5	3.8
Craven	180	100	125.0	0.0
Hambleton	350	185	112.1	-10.3
Harrogate	530	340	178.9	9.3
Richmondshire	205	110	115.8	-6.8
Ryedale	210	135	180.0	-2.3
Scarborough	805	355	78.9	-9.6
Selby	515	305	145.2	1.0

Source: Nomis

Figure: 18 – 24 yr old claimants



Source: Nomis

Business Activity

Business Confidence

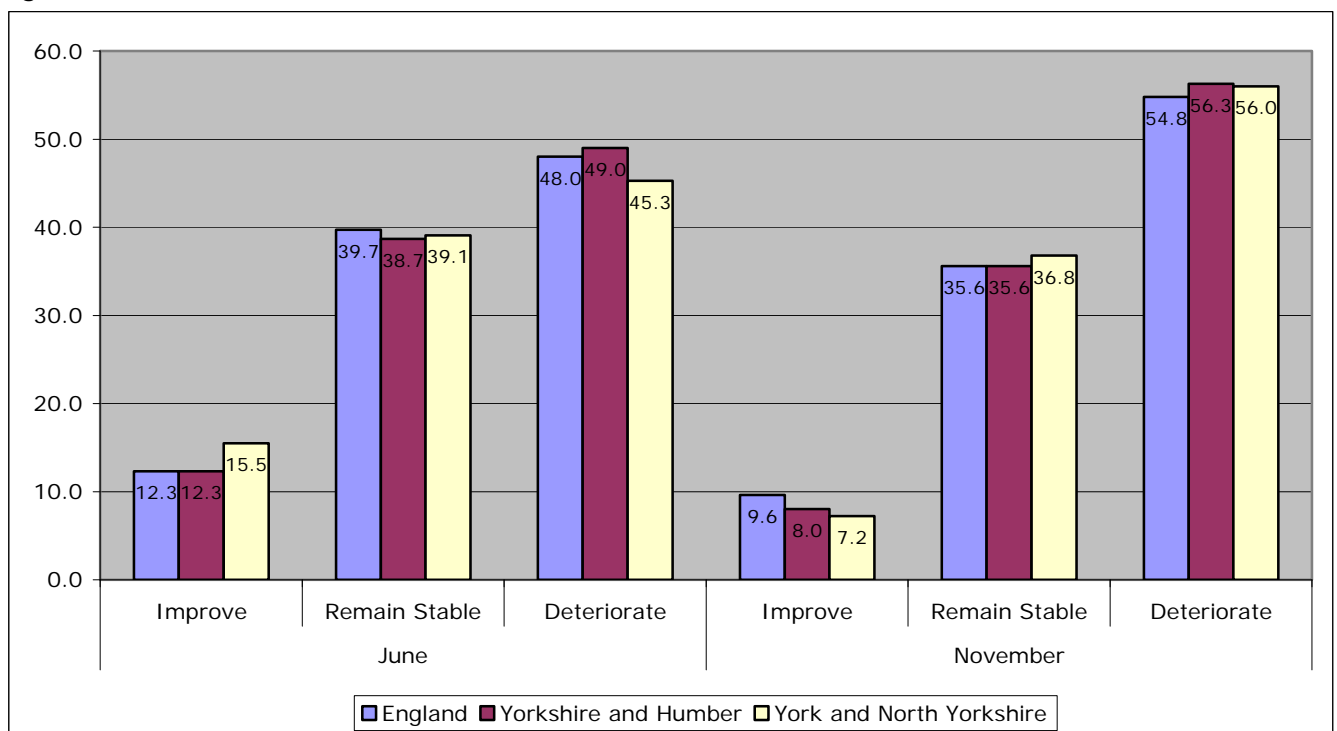
The National Business Survey is a large scale research project conducted by Ipsos Mori on behalf of the RDA Network and Invest Northern Ireland. It explores perceptions of businesses across England and Northern Ireland, on current and recent business conditions as well as looking forward to potential issues and views on projected change over the coming months. The survey asks a series of questions on business confidence, a number of which are presented here.

Over the next 12 months do you expect the business climate in which your business operates to generally improve, remain stable, or deteriorate?

	June			November		
	Improve	Remain Stable	Deteriorate	Improve	Remain Stable	Deteriorate
England	12.3	39.7	48.0	9.6	35.6	54.8
Yorkshire and Humber	12.3	38.7	49.0	8.0	35.6	56.3
York and North Yorkshire	15.5	39.1	45.3	7.2	36.8	56.0

Source: 'National Business Survey, November 2008, (Ipsos Mori on behalf of England's Regional Development Agencies and Invest Northern Ireland)'

Figure:



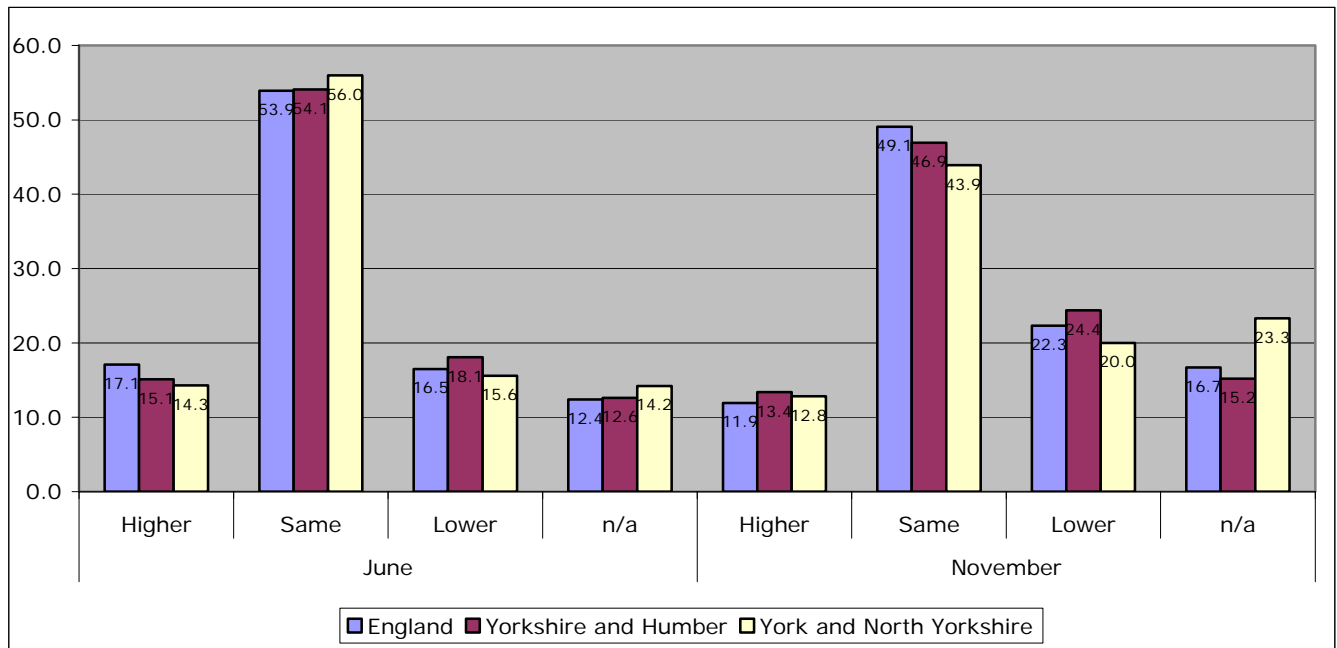
Source: 'National Business Survey, November 2008, (Ipsos Mori on behalf of England's Regional Development Agencies and Invest Northern Ireland)'

What has been the trend in the last 12 months with regard to numbers employed?

	June				November			
	Higher	Same	Lower	n/a	Higher	Same	Lower	n/a
England	17.1	53.9	16.5	12.4	11.9	49.1	22.3	16.7
Yorkshire and Humber	15.1	54.1	18.1	12.6	13.4	46.9	24.4	15.2
York and North Yorkshire	14.3	56.0	15.6	14.2	12.8	43.9	20.0	23.3

Source: 'National Business Survey, November 2008, (Ipsos Mori on behalf of England's Regional Development Agencies and Invest Northern Ireland)'

Figure:



N.B. The National Business Survey data is a sample and subject to some survey error. Sample sizes are smaller at more local levels therefore the confidence intervals are higher. The sample size was also smaller in November than it was in June.

Tourism

Number of Visits to Leisure Attractions in York and North Yorkshire

	No of Attractions Responding	Total Previous Year	Total	% Change
Jul-08	54	621521	600900	-3%
Aug-08	56	832091	843934	1%
Sep-08	56	530743	446212	-16%
Oct-08	50	422394	381563	-10%
Nov-08	40	197447	184794	-6%
Dec-08	36	194004	150948	-22%
Jan-09	58	153038	120111	-22%
Feb-09	44	-	-	-16%
Mar-09	63	-	-	-11%

Source: Visitor Attraction Monitor

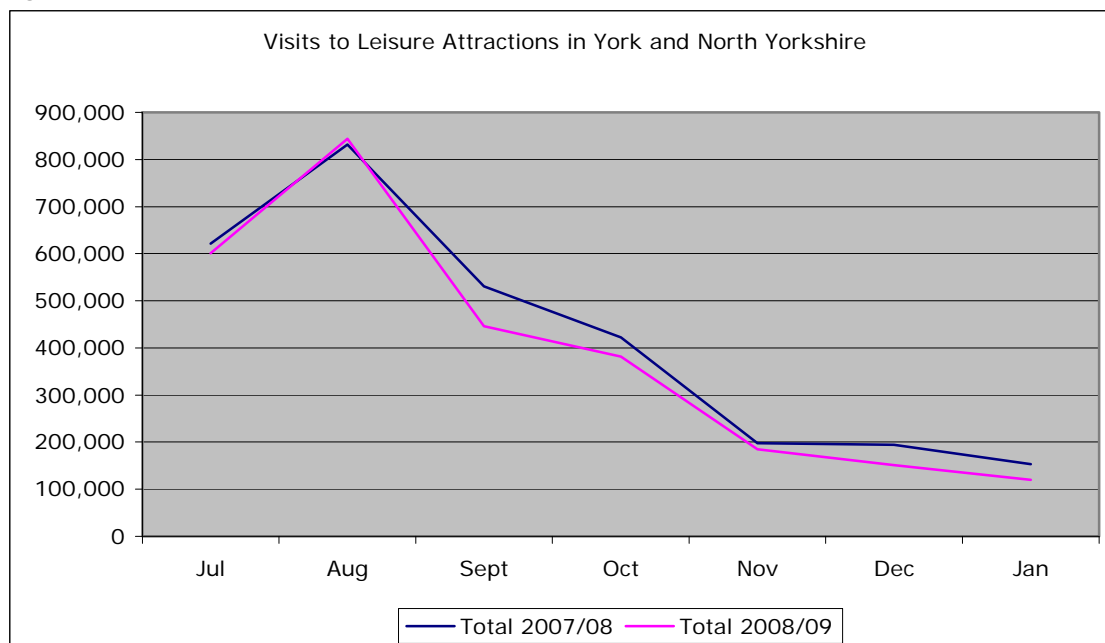
(Data missing due to a change in the way Yorkshire Tourist Board reports the statistics)

Number of Visits to Leisure Attractions in Yorkshire and Humber

Date	No of Attractions Responding	Total Previous Year	Total	% Change
Jul-08	86	1062250	904063	-15%
Aug-08	91	1538661	1394837	-9%
Sep-08	111	930657	759782	-18%
Oct-08	101	836270	756442	-10%
Nov-08	97	480975	472685	-2%
Dec-08	80	436028	325557	-25%
Jan-09	103	410433	300082	-27%
Feb-09	97	-	-	-5%
Mar-09	118	-	-	-19%

Source: Visitor Attraction Monitor

Figure: Visits to Leisure Attractions, York and North Yorkshire



Source: Visitor Attraction Monitor

Length of Stay - Yorkshire and Humber

	Regional (serviced) average length of stay (nights)				
	2004	2005	2006	2007	2008
August	1.9	2	2	2	1.8
September	1.9	1.8	1.9	1.9	1.9
October	1.8	1.9	2	1.8	1.8
November	1.7	1.8	1.9	1.7	1.7
December	1.6	1.7	1.7	1.7	1.6
January	1.7	1.8	1.8	1.8	1.6

Source: Yorkshire Tourist Board

	Regional (self catering) average length of stay (nights)				
	2004	2005	2006	2007	2008
July	5.6	7.5	7.1	7.1	7.4
August	6.2	7.1	7.3	7.2	7.1
September	5.9	6.6	6.7	6.6	6.9
October	5.9	6.4	6.1	6	6.2
November	5.2	5.1	5.8	6.2	5.6
December	5.9	5.9	6.8	6.3	6.2

Source: Yorkshire Tourist Board

Business Advice

Number of Businesses requesting re-profiling of NNDR

	2007	2008
Craven		
Hambleton		
Harrogate		
Richmondshire		
Ryedale		
Scarborough		
Selby		
York		

Source: Local Authorities

Business Link Advice

Hopefully Available from May 09

Town Centre Activity

Footfall

	TBC
Craven	
Hambleton	
Harrogate	
Richmondshire	
Ryedale	
Scarborough	
Selby	
York	

Source: Local Authorities

Number of Vacant Retail Premises

	Mar-08		Mar-09	
	no.	%	no.	%
Craven				
Hambleton				
Harrogate				
Richmondshire				
Ryedale				
Scarborough				
Selby				
York				

Source: Local Authorities

Car Parking

Total Revenue/Visits – TBC

	Q1 2008	Q2 2008	Q3 2008	Q4 2008	Q1 2009
Craven					
Hambleton					
Harrogate					
Richmondshire					
Ryedale					
Scarborough					
Selby					
York					

Source: Local Authorities

Housing

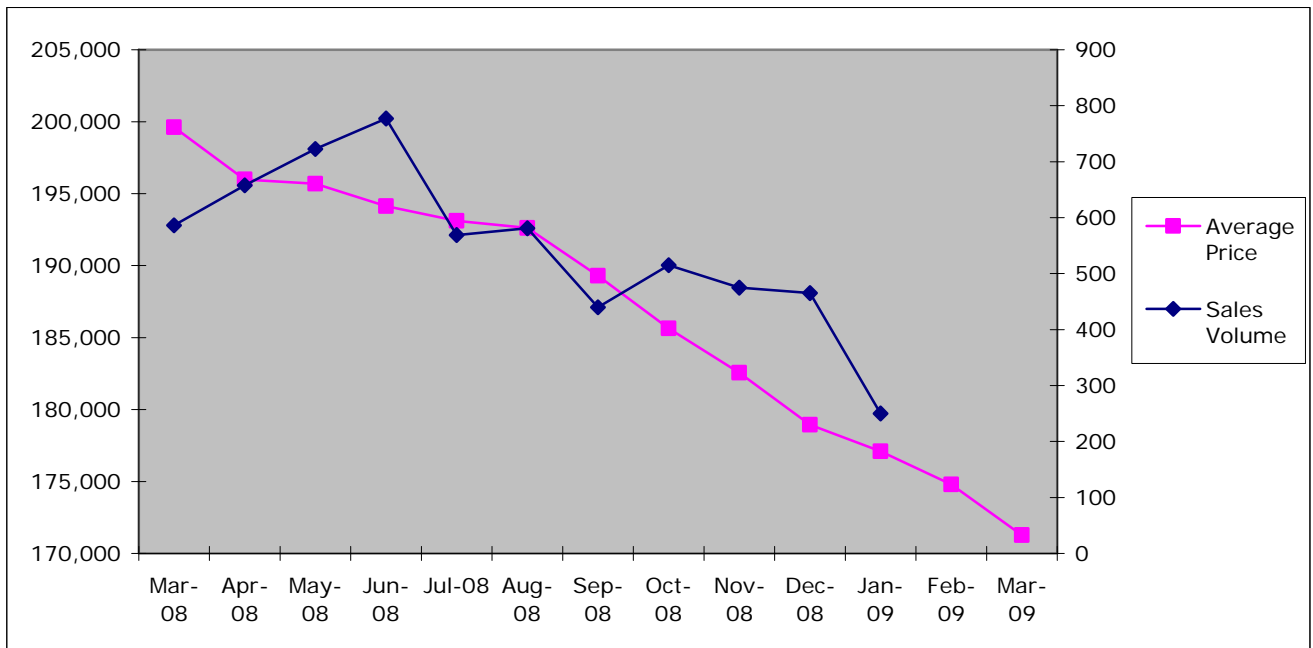
Land Registry House Price Index

North Yorkshire

	Index	Average Price	Monthly Change	Annual Change	Sales Volume
Mar-08	295.1	199,626	0.1	4.1	586
Apr-08	289.7	195,994	-1.8	1.4	658
May-08	289.3	195,701	-0.1	1	723
Jun-08	287	194,142	-0.8	-0.6	777
Jul-08	285.5	193,114	-0.5	-1.8	569
Aug-08	284.8	192,630	-0.3	-2.5	581
Sep-08	279.8	189,289	-1.7	-4.5	440
Oct-08	274.4	185,629	-1.9	-6.7	515
Nov-08	269.9	182,553	-1.7	-8.3	475
Dec-08	264.5	178,950	-2	-10.6	465
Jan-09	261.8	177,084	-1	-11.6	250
Feb-09	258.4	174,793	-1.3	-12.4	-
Mar-09	253.2	171,274	-2.0	-14.2	-

Source: Land Registry, House Price Index
 - Data not available

Figure: North Yorkshire – Average Price & Sales Volume



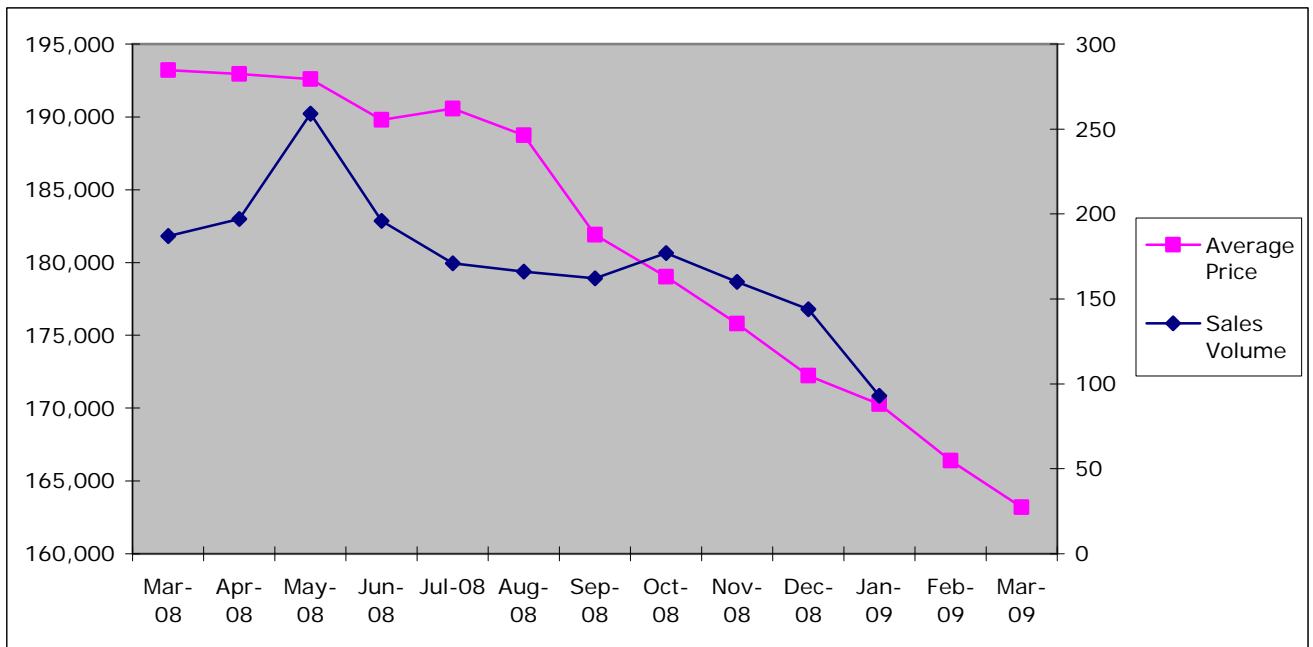
Source: Land Registry, House Price Index

York

	Index	Average Price	Monthly Change	Annual Change	Sales Volume
Mar-08	296.1	193,215	-0.6	2.3	187
Apr-08	295.7	192,947	-0.1	1	197
May-08	295.1	192,599	-0.2	0.6	259
Jun-08	290.9	189,806	-1.5	-1.3	196
Jul-08	292	190,574	0.4	-1.2	171
Aug-08	289.2	188,743	-1	-2.7	166
Sep-08	278.8	181,901	-3.6	-6.7	162
Oct-08	274.3	179,014	-1.6	-8.3	177
Nov-08	269.4	175,811	-1.8	-9.3	160
Dec-08	263.9	172,232	-2	-11.2	144
Jan-09	260.9	170,280	-1.1	-12	93
Feb-09	255	166,385	-2.3	-14.4	-
Mar-09	250.1	163,205	-1.9	-15.5	-

Source: Land Registry, House Price Index
 - Data not available

Figure: York – Average Price & Sales Volume



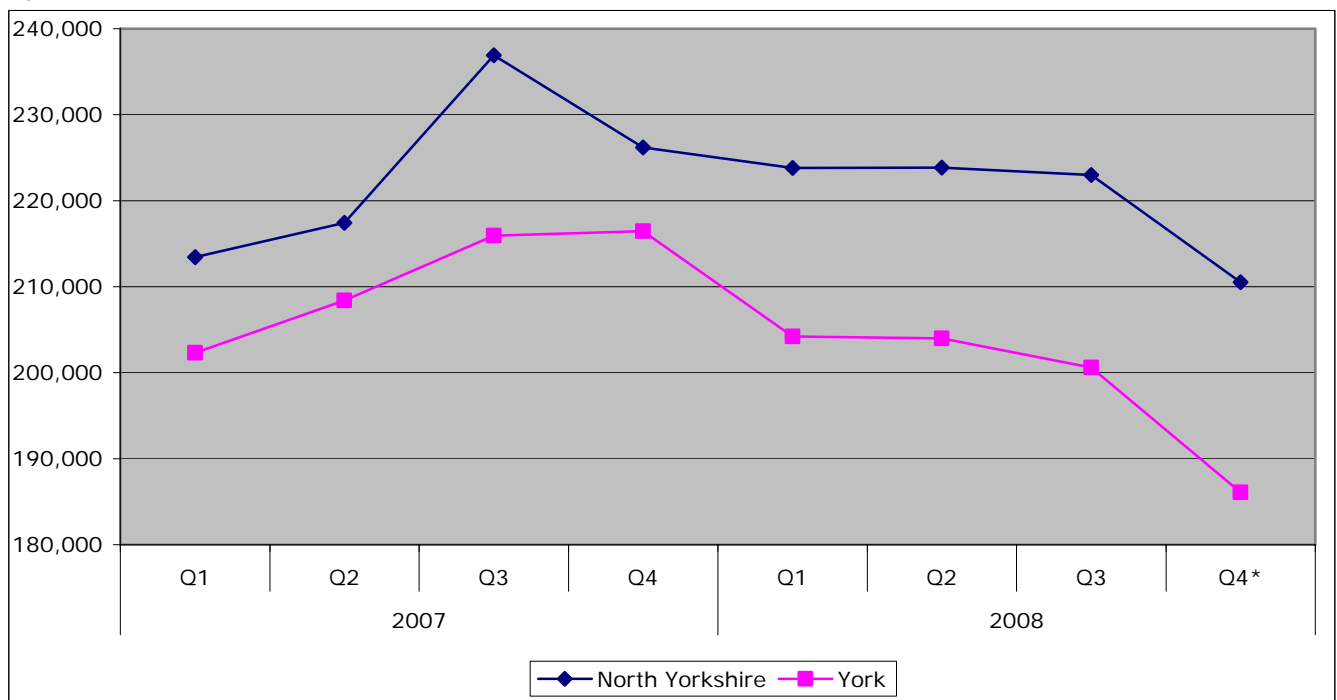
Mean House Prices

	2007				2008				% Change on previous year
	Q1	Q2	Q3	Q4	Q1	Q2	Q3	Q4*	
England	213,240	218,899	232,345	224,467	221,270	222,441	227,182	207,726	-7.5%
Yorkshire & Humber	150,665	158,684	163,743	163,054	155,180	159,859	156,608	151,113	-7.3%
North Yorkshire	213,437	217,433	236,905	226,204	223,812	223,835	223,002	210,515	-6.9%
York	202,308	208,403	215,939	216,474	204,209	204,004	200,603	186,101	-14.0%
Craven	209,131	220,263	222,848	211,645	206,501	211,979	213,589	202,952	-4.1%
Hambleton	233,945	232,159	254,320	235,670	231,621	248,417	240,533	256,325	8.8%
Harrogate	254,301	263,615	292,125	278,476	280,397	286,204	269,747	245,017	-12.0%
Richmondshire	211,352	228,250	229,411	241,145	210,311	230,944	223,971	190,838	-20.9%
Ryedale	227,507	225,265	257,519	242,618	266,365	225,208	239,240	231,379	-4.6%
Scarborough	164,320	165,638	171,870	170,345	179,150	169,107	167,178	172,593	1.3%
Selby	192,046	192,994	210,265	202,949	185,217	184,721	200,788	173,862	-14.3%

Source: DCLG

* Data is provisional

Figure: Mean House Prices, North Yorkshire and York



Source: DCLG

* Data is provisional

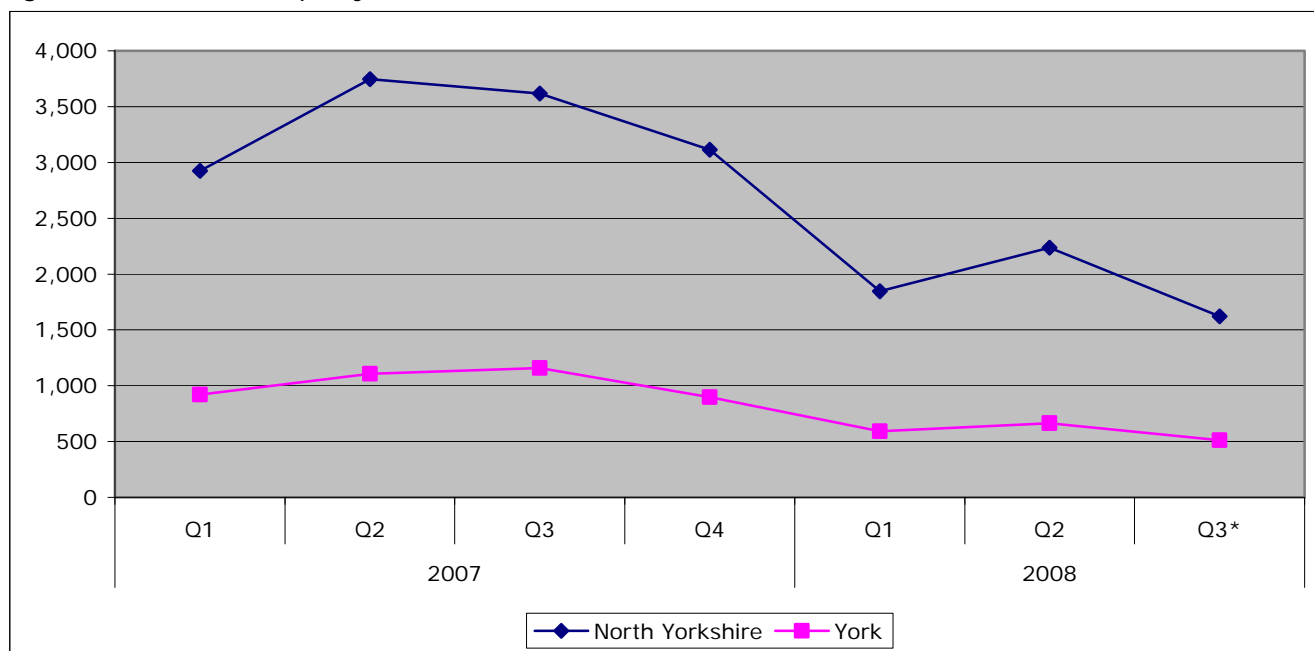
Property Sales

	2007				2008			% Change on previous year	% Change on previous Quarter
	Q1	Q2	Q3	Q4	Q1	Q2	Q3*		
England	269,911	316,630	329,208	274,562	173,560	181,420	137,201	-58%	-24%
Yorkshire & Humber	26,901	31,872	31,678	27,169	17,276	18,717	13,860	-56%	-26%
North Yorkshire	2,925	3,748	3,617	3,115	1,845	2,237	1,623	-55%	-27%
York	921	1,108	1,160	898	591	665	513	-56%	-23%
Craven	265	306	325	249	173	223	160	-51%	-28%
Hambleton	356	531	417	373	222	292	240	-42%	-18%
Harrogate	805	958	1,052	828	489	537	435	-59%	-19%
Richmondshire	179	243	242	242	133	188	93	-62%	-51%
Ryedale	209	255	269	233	124	178	124	-54%	-30%
Scarborough	644	804	770	704	448	485	378	-51%	-22%
Selby	467	651	542	486	256	334	193	-64%	-42%

Source: DCLG

* Data is provisional

Figure: Number of Property Sales, North Yorkshire and York



Source: DCLG

* Data is provisional

Mortgage and Landlord Possession Claims/Orders

The following data indicates the number of claims/orders that have been issued at County Court level for possession of properties either under mortgage or landlord possession.

N.B. Important note - Introduction of Mortgage Pre-Action Protocol (MPAP) on 19 November 2008.

A new mortgage pre action protocol (MPAP), was introduced for possession claims in the County Courts with effect from 19 November 2008.

Evidence from administrative records from October to December 2008 suggests that this date coincided with a fall of around 50% in the daily and weekly numbers of new mortgage repossession claims being issued in the courts. It therefore seems highly likely that the launch of the MPAP has led to a marked fall in the number of new claims being issued during the latter part of the period covered by this bulletin. However, given the apparent cause, users should exercise caution in drawing broader inferences from the fall in mortgage possession claims issued in Q4 2008.

Mortgage possession orders are typically made around 8 weeks after the corresponding claims are issued. For this reason, the impact of the MPAP is expected to occur during the early months of 2009. At this early stage is not clear to what extent the launch of the MPAP has led to a permanent fall in the numbers of new mortgage possession claims being issued, as opposed to some merely being postponed. This will become clearer as statistics for 2009 are published.

Mortgage Possession Claims Issued

	Q1 2008	Q2 2008	Q3 2008	Q4 2008	Q1 2009	% change since Q1 2008	% change since Q4 2008
Yorkshire & Humber	4,038	3,928	3,962	2,669	2,476	-39%	-7%
York & North Yorkshire	360	337	358	258	237	-34%	-8%
Harrogate	59	56	44	45	40	-32%	-11%
Scarborough	120	97	138	93	78	-37%	-16%
Skipton	33	41	29	20	24	-33%	20%
York	148	143	147	100	95	-37%	-5%

Source: Ministry of Justice

Mortgage Possession Orders Issued

	Q1 2008	Q2 2008	Q3 2008	Q4 2008	Q1 2009	% change since Q1 2008	% change since Q4 2008
Yorkshire & Humber	-	-	-	-	1,821	-	-
York & North Yorkshire	-	-	-	-	152	-	-
Harrogate	-	-	-	-	30	-	-
Scarborough	90	80	116	113	57	-37%	-50%
Skipton	29	32	31	27	15	-48%	-44%
York	100	106	93	123	50	-50%	-59%

Source: Ministry of Justice

Landlord Possession Claims issued

	Q1 2008	Q2 2008	Q3 2008	Q4 2008	Q1 2009	% change since Q1 2008	% change since Q4 2008
Yorkshire & Humber	2,671	2,656	2,434	2,438	2,370	-11%	-2.8%
York & North Yorkshire	280	252	288	266	232	-17%	-12.8%
Harrogate	46	48	56	40	33	-28%	-17.5%
Scarborough	82	64	81	85	60	-27%	-29.4%
Skipton	15	8	16	18	12	-20%	-33.3%
York	137	132	135	123	127	-7%	3.3%

Source: Ministry of Justice

Landlord Possession Orders issued

	Q1 2008	Q2 2008	Q3 2008	Q4 2008	Q1 2009	% change since Q1 2008	% change since Q4 2008
Yorkshire & Humber	-	-	-	-	2,403	-	-
York & North Yorkshire	-	-	-	-	233	-	-
Harrogate	-	-	-	-	44	-	-
Scarborough	76	52	69	75	70	-8%	-7%
Skipton	16	5	13	12	12	-25%	0%
York	110	75	106	116	107	-3%	-8%

Source: Ministry of Justice

Planning

Total Planning Decisions

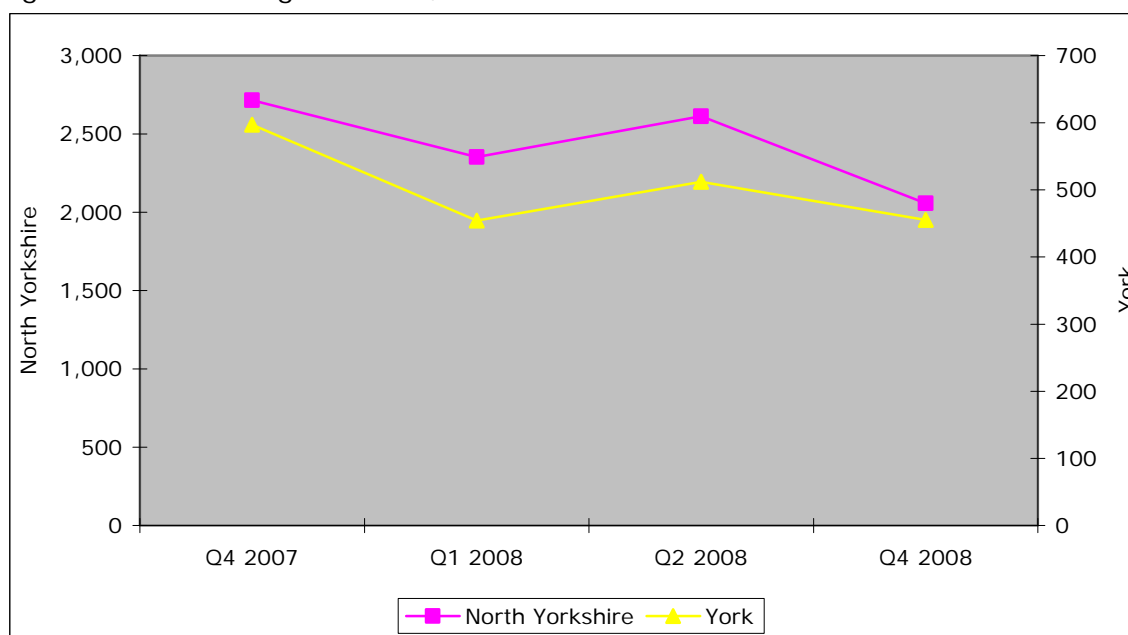
	Q4 2007	Q1 2008	Q2 2008	Q3 2008	Q4 2008	Annual Change		Quarterly Change	
England	148,708	131,704	144,700	-	115,489	-33,219	-22.3%	-	-
Yorkshire and Humber	13,093	11,534	12,100	-	9,937	-3,156	-24.1%	-	-
York and North Yorkshire	3,312	2,806	3,125	-	2,513	-799	-24.1%	-	-
North Yorkshire	2,715	2,352	2,613	2,459	2,058	-657	-24.2%	-401	-16.3%
York	597	454	512	#	455	-142	-23.8%	-	-
Craven	202	170	193	200	117	-85	-42.1%	-83	-41.5%
Hambleton	440	323	399	360	300	-140	-31.8%	-60	-16.7%
Harrogate	635	642	672	561	613	-22	-3.5%	52	9.3%
Richmondshire	200	154	183	199	141	-59	-29.5%	-58	-29.1%
Ryedale	204	188	228	258	180	-24	-11.8%	-78	-30.2%
Scarborough	347	276	265	240	186	-161	-46.4%	-54	-22.5%
Selby	326	260	296	276	213	-113	-34.7%	-63	-22.8%
North York Moors	197	195	197	216	166	-31	-15.7%	-50	-23.1%
Yorkshire Dales	164	144	180	149	142	-22	-13.4%	-7	-4.7%

Source: Statistics of Planning Decisions, CLG

Data not submitted

- Figure cannot be calculated

Figure: Total Planning Decisions, North Yorkshire/York



Source: Statistics of Planning Decisions, CLG

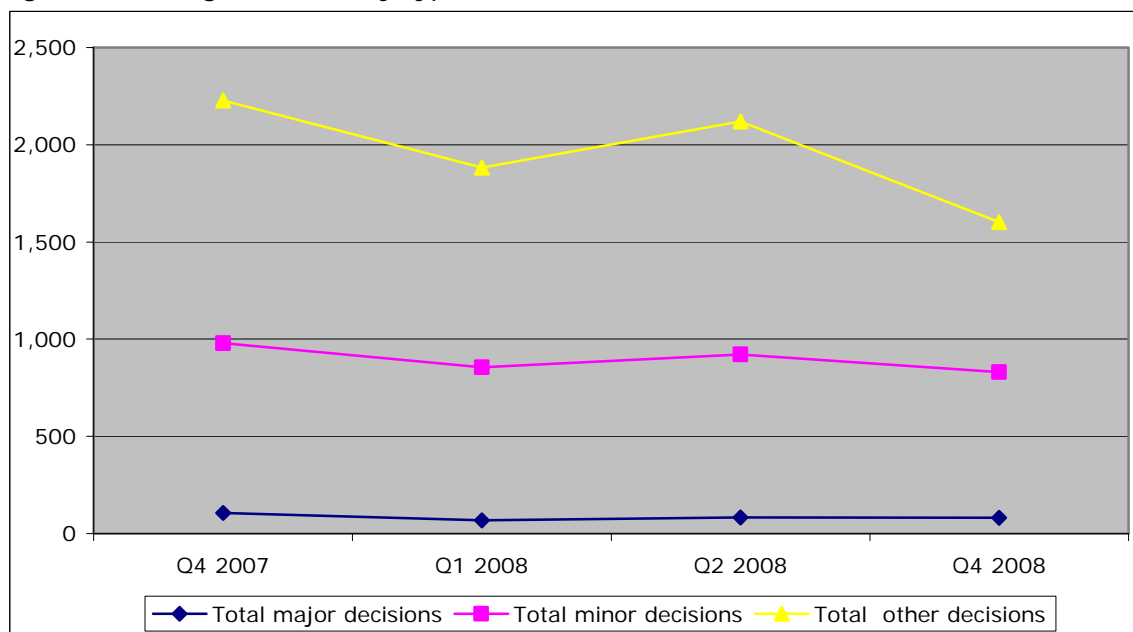
N.B. The number of decisions made in Q3 2008 is not available and therefore excluded from the chart.

Breakdown of planning decisions by type in York and North Yorkshire

	Q4 2007	Q1 2008	Q2 2008	Q3 2008	Q4 2008
Total major decisions	105	67	83	-	81
Total minor decisions	979	856	921	-	830
Total other decisions	2,228	1,883	2,121	-	1,602
Total	3,312	2,806	3,125	-	2,513

Source: Statistics of Planning Decisions, CLG

Figure: Planning Decisions by type, York and North Yorkshire



Source: Statistics of Planning Decisions, CLG

N.B. The total number of decisions made in Q3 2008 is unknown and therefore excluded from the chart.

Breakdown of planning decisions by type, North Yorkshire

	Q4 2007	Q1 2008	Q2 2008	Q3 2008	Q4 2008
Total major decisions	89	58	66	54	69
Total minor decisions	836	750	799	807	700
Total other decisions	1,790	1,544	1,748	1,598	1,289
Total	2,715	2,352	2,613	2,459	2,058

Source: Statistics of Planning Decisions, CLG

Breakdown of planning decisions by type, York

	Q4 2007	Q1 2008	Q2 2008	Q3 2008	Q4 2008
Total major decisions	16	9	17	#	12
Total minor decisions	143	106	122	#	130
Total other decisions	438	339	373	#	313
Total	597	454	512	#	455

Source: Statistics of Planning Decisions, CLG

Data not submitted

Benefits

Number of claims made for Council Tax and Housing Benefit

	Q1 2008	Q2 2008	Q3 2008	Q4 2008	Q1 2009
Craven					
Hambleton					
Harrogate					
Richmondshire					
Ryedale					
Scarborough					
Selby					
York					

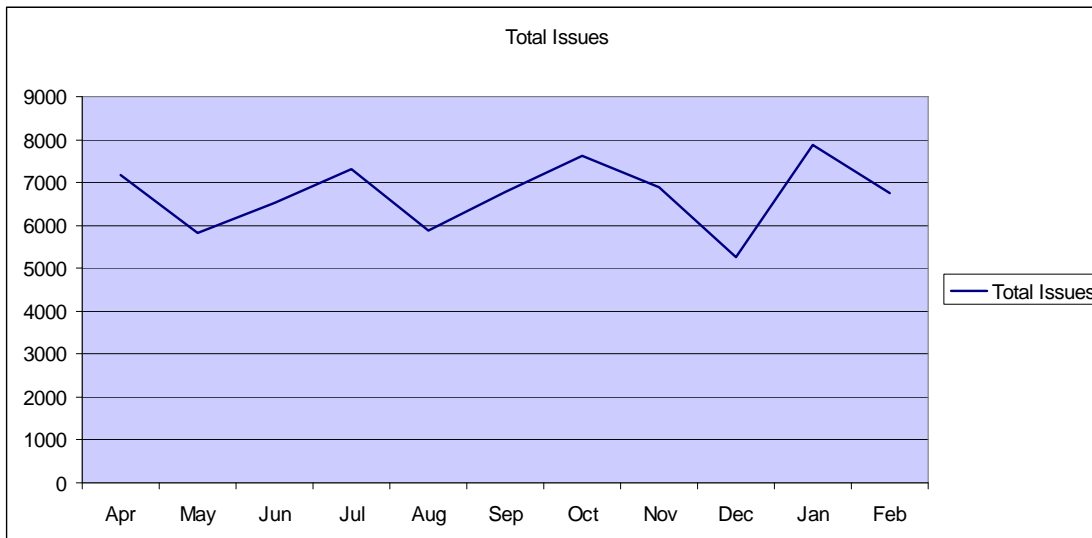
Source: Ministry of Justice

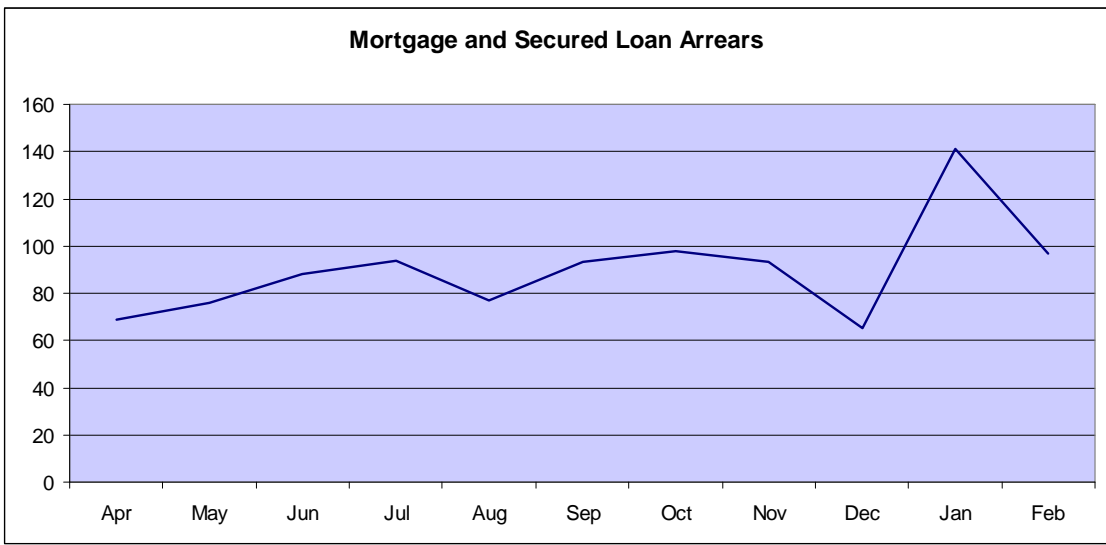
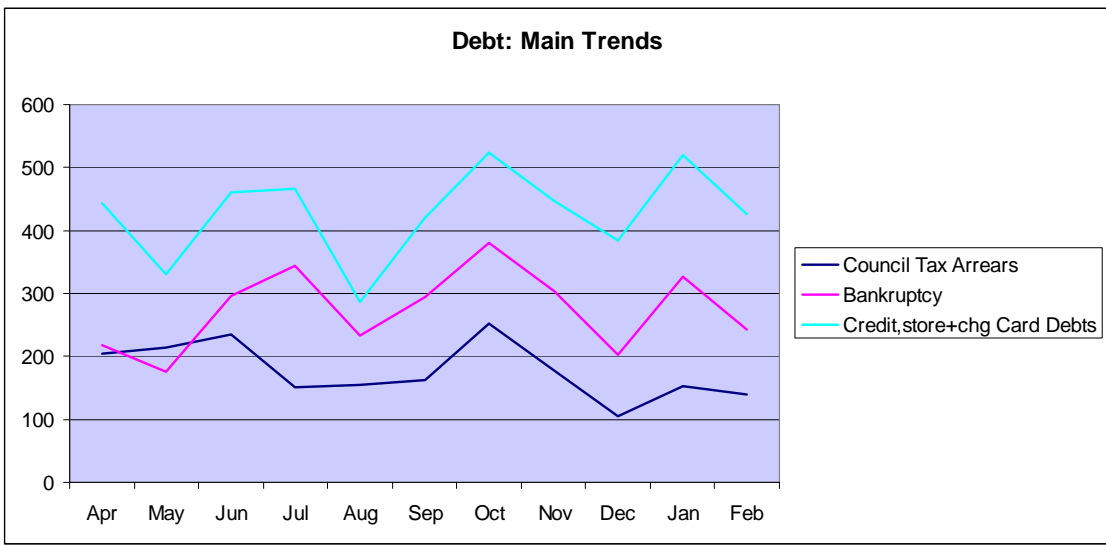
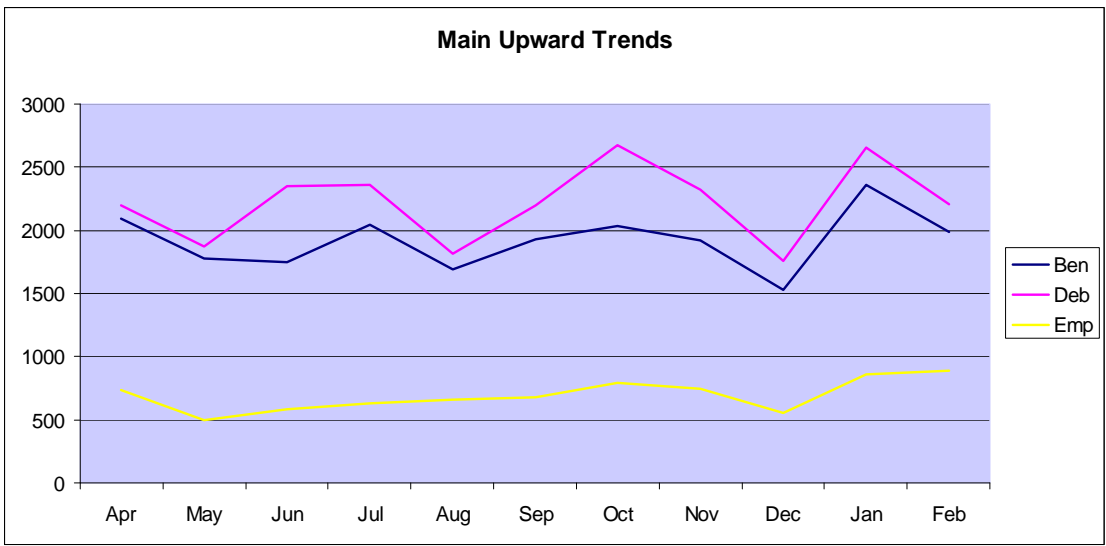
Need for Advice

North Yorkshire CABs – Mapping Trends 04/2008 -02/2009

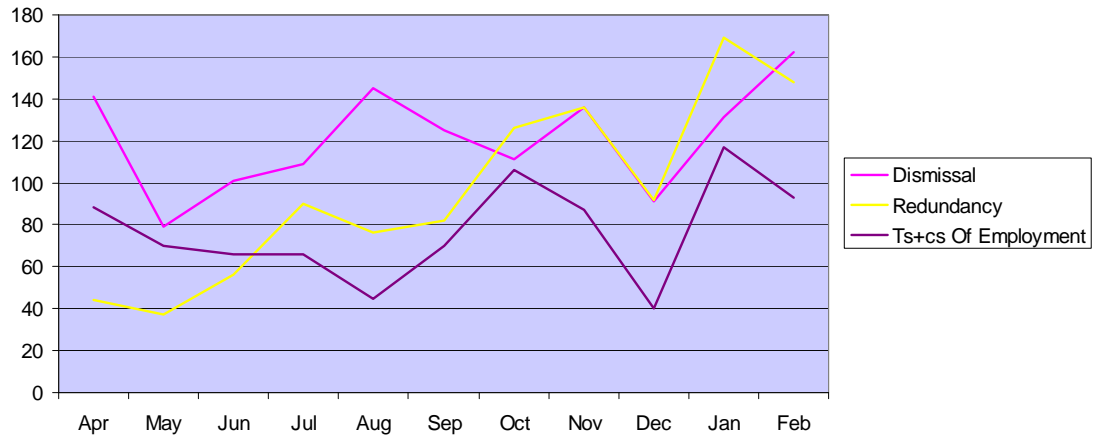
Information is from the Social Policy Codes recorded by all Citizens Advice Bureaux across North Yorkshire.

Some information for February is missing. Analysis has therefore only been made up to Jan 09. Seasonality is also likely to be a significant factor. As CABx are all working up to capacity the overall trend has not increased significantly.





Employment: Main Trends



Benefits: Main Trends

